

Cabot/Koppers Superfund Site Update

by
Rick Hutton, P.E.
Water/Wastewater Supervising Engineer
Gainesville Regional Utilities

GCC/BOCC Mtg
 May 1, 2008



Koppers Site

2001

- Geology & contamination not well understood
- Proposed remedy not adequate

2008

- Much better understanding of site
- EPA now progressing toward plan for final remedy

GCC/BOCC Mtg
 May 1, 2008 Slide: 2

GRU Involvement

GRU Primary Goal

- Prevent contamination from reaching wellfield

GRU Consultant Team

- World Renowned Experts in DNAPL/creosote
- Complimentary skills & strengths
- Reliance on more than one opinion
- Unbiased, comprehensive site review
- Assist GRU in working w/ EPA, FDEP, Alachua County & Beazer

GCC/BOCC Mtg
 May 1, 2008 Slide: 3

Expert Consultant Team

Floridan Aquifer Transect Wells (Installed 2005-06)

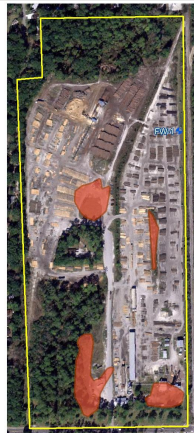
Groundwater Modeling Evaluation (2005)

Review & Recommendation Report (2006)

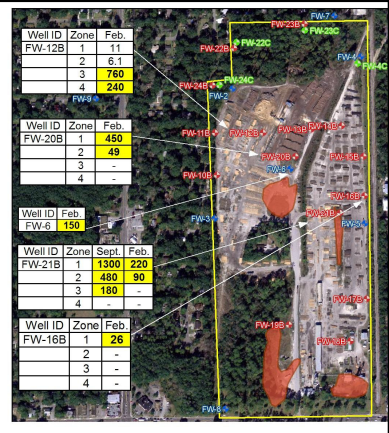
- Detailed recommendations for additional investigations
- Most findings adopted into EPA 5 Year Review Report
- EPA coordination w/ Beazer & Cabot on implementing

GCC/BOCC Mtg
 May 1, 2008 Slide: 4

2001 Floridan Aquifer Wells



2008 Floridan Aquifer Wells



GRU's Primary Concerns

- ☐ **Surficial & Intermediate Aquifer Remediation**
- ☐ **Containment/Remediation of Floridan Contaminated areas**
- ☐ **Long-Term Floridan Monitoring**
- ☐ **Contingency Plans**
- ☐ **Cabot Site Investigation**

GCC/BOCC Mtg
May 1, 2008 Slide: 7