

**LEGISLATIVE #**

**110814G**



## Planning and Development Services

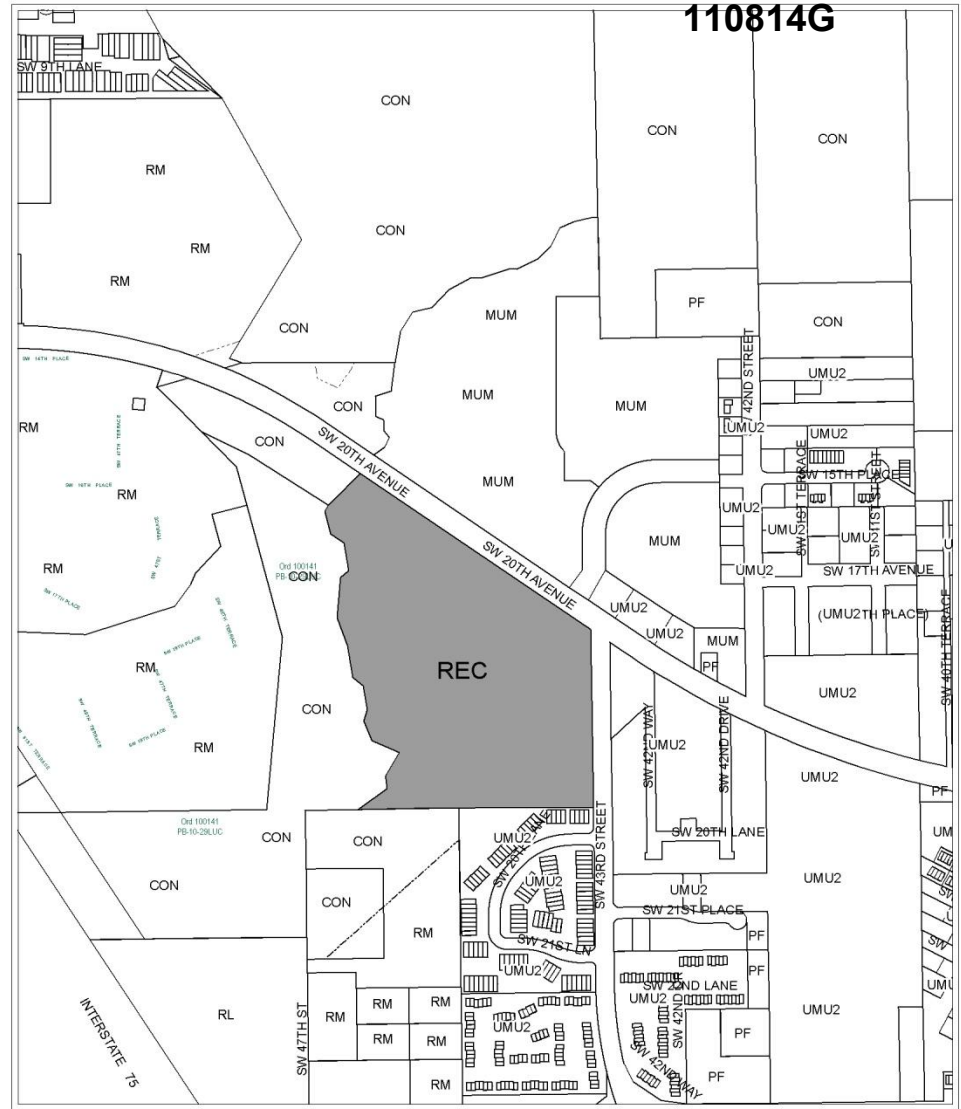
**PB-11-137 LUC**  
**Legistar Item No. 110814**  
**Jason Simmons**  
**April 19, 2012**

## City of Gainesville Land Use Categories

- R-L Residential Low-Density (up to 12 units per acre)
- R-M Residential Medium-Density (8-30 units per acre)
- MU-M Mixed-Use Medium Intensity (12-30 units per acre)
- UMU-2 Urban Mixed-Use 2 (up to 100 units per acre)
- CON Conservation
- PF Public Facilities

## Alachua County Land Use Categories

- REC Recreation



## EXISTING LAND USE

----- Division line between two zoning districts  
 ——— City Limits

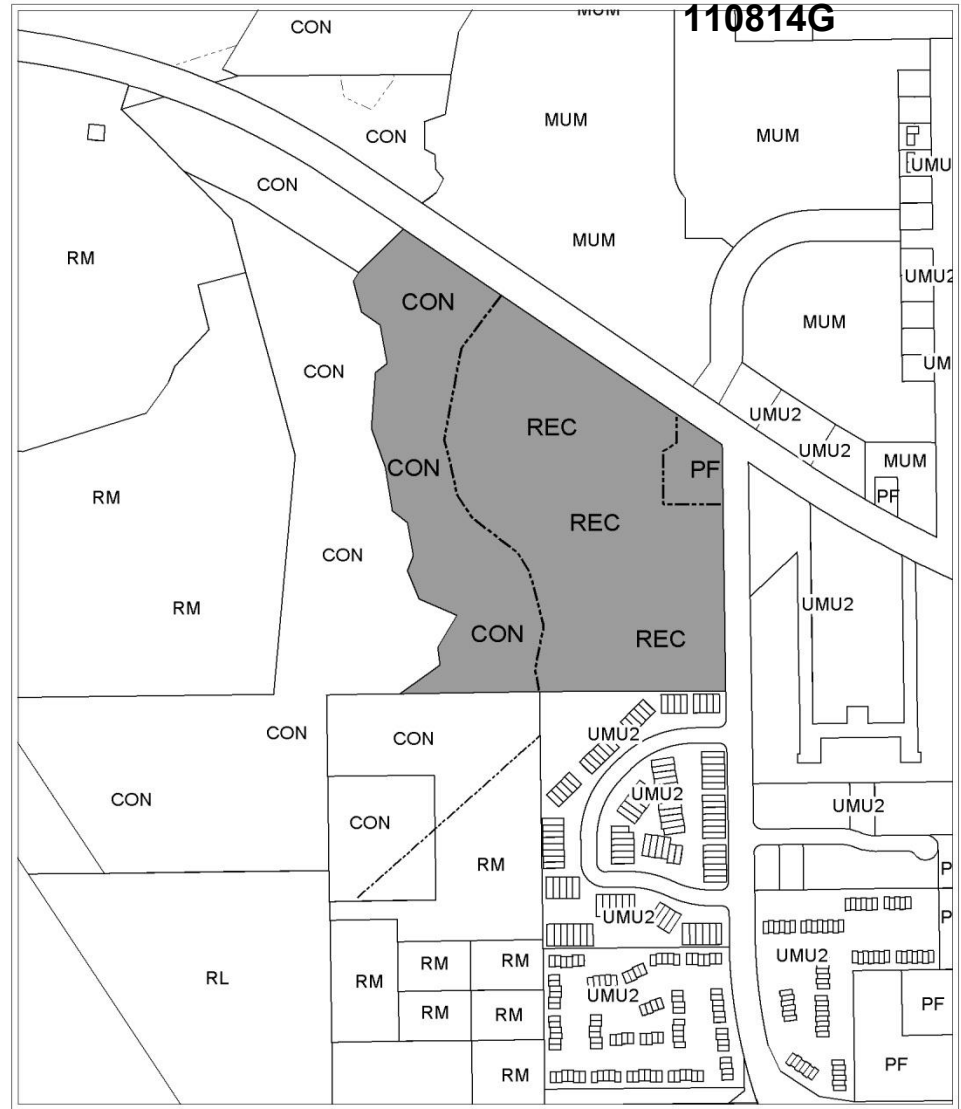
Area under petition consideration



Name	Petition Request	Map(s)	Petition Number
City Plan Board, applicant	Amend the FLUM from Alachua County Recreation to City of Gainesville Recreation, Public Facilities and Conservation	4243	PB-11-137 LUC

# City of Gainesville Land Use Categories

- R-L Residential Low-Density (up to 12 units per acre)
- R-M Residential Medium-Density (8-30 units per acre)
- MU-M Mixed-Use Medium Intensity (12-30 units per acre)
- UMU-2 Urban Mixed-Use 2 (up to 100 units per acre)
- CON Conservation
- PF Public Facilities
- REC Recreation




110814G

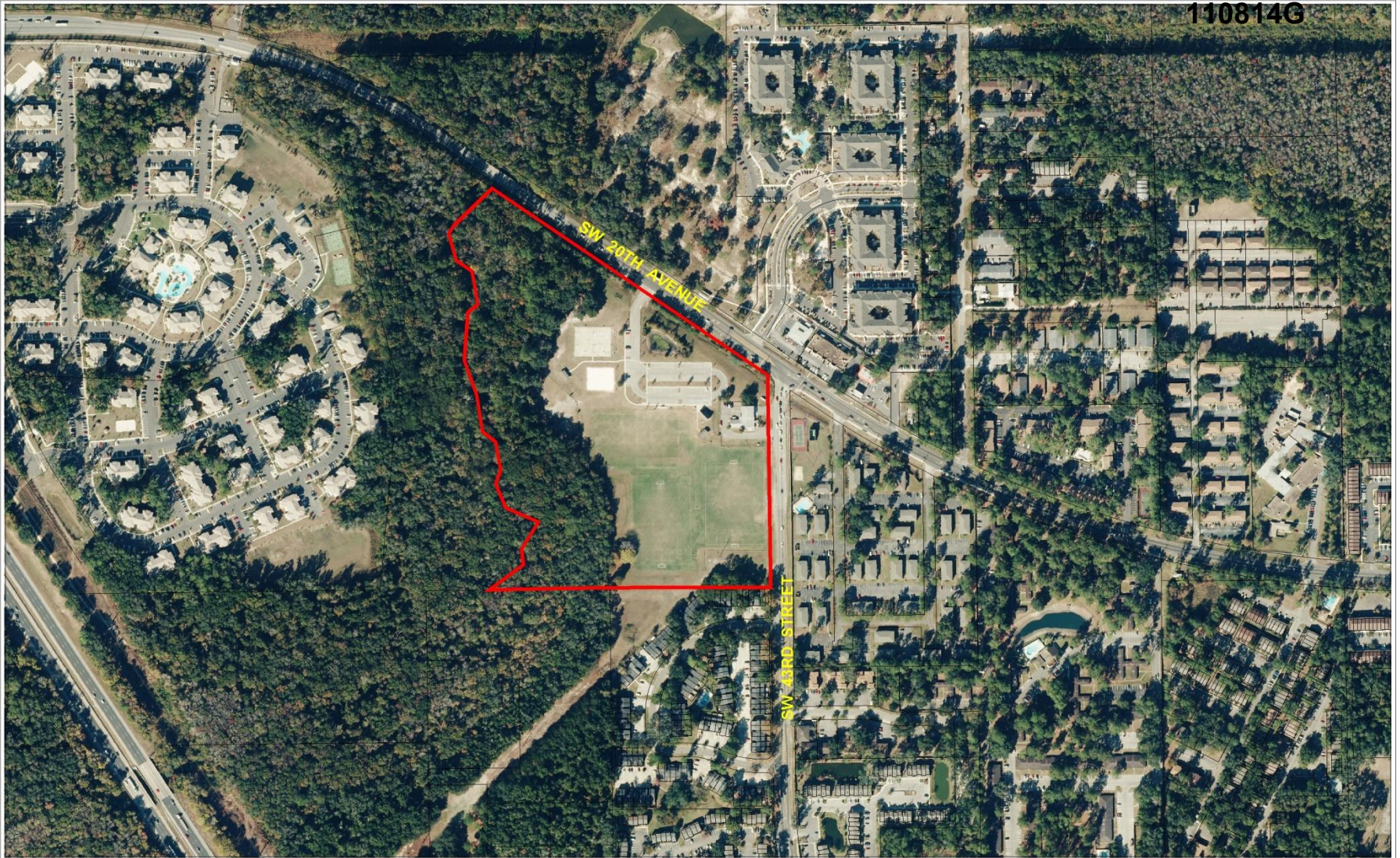
----- Division line between two zoning districts  
 ——— City Limits

Area under petition consideration

## PROPOSED LAND USE

	Name	Petition Request	Map(s)	Petition Number
 No Scale	City Plan Board, applicant	Amend the FLUM from Alachua County Recreation to City of Gainesville Recreation, Public Facilities and Conservation	4243	PB-11-137 LUC

110814G



### AERIAL PHOTOGRAPH



Name	Petition Request	Map(s)	Petition Number
City Plan Board, applicant	Amend the FLUM from Alachua County Recreation to City of Gainesville Recreation, Public Facilities and Conservation	4243	PB-11-137 LUC

110814G



110814G



110814G





110814G



110814G



- City of Gainesville land use designations must be applied to annexed property
- Recreation LU is compatible with Alachua County Recreation LU & the active recreation portion of the site
- Public Facilities LU is most appropriate for fire rescue station
- Conservation LU is appropriate for portions of site w/ environmental features

- About 7.5 acres of the property designated a Strategic Ecosystem by Alachua County
- Hogtown Creek and 10-year flood channel also present in area to be designated Conservation
- Petition PB-11-137 LUC promotes continuation of existing uses, enhancing existing urban infill development in the Urban Village area and protecting sensitive environmental features
- LU proposal is consistent with the Comprehensive Plan

**STAFF RECOMMENDATION:**

**APPROVAL OF PETITION  
PB-11-137 LUC**