

#130261A

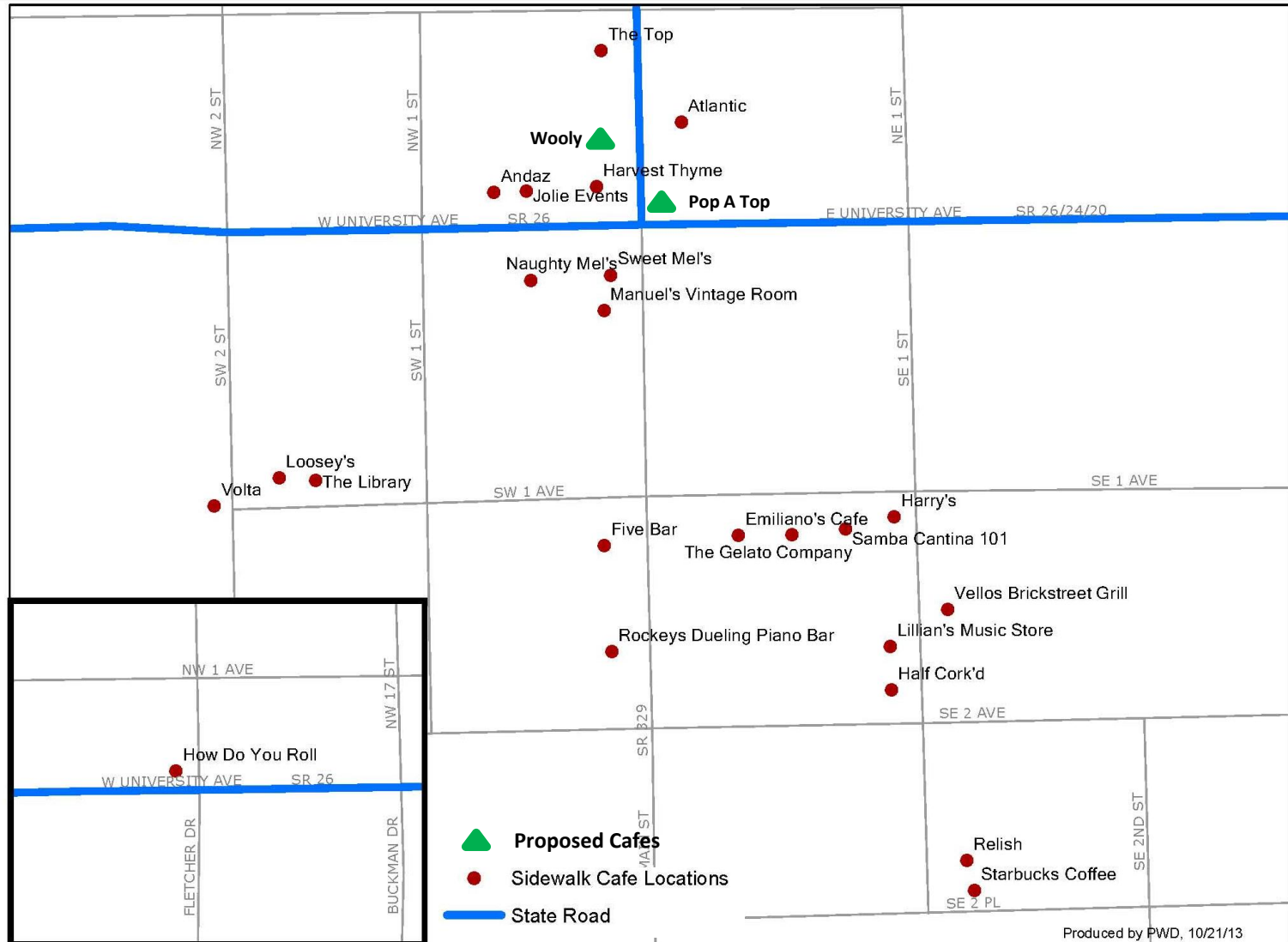
Community Development Committee
November 13, 2013

SIDEWALK CAFÉS

Overview

- Section 30-121 of Land Development Code regulates sidewalk cafés
 - Annual license requirement
 - General liability insurance requirement (no less than \$500,000)
- New FDOT requirements for use of state-owned right-of-way
 - Annual lease fee of \$2.00/SF
 - General liability insurance requirement (no less than \$2,000,000)
 - Agreement with the City to administer leases

Existing / Proposed Cafés





Must meet ADA requirements

Enclosure required for establishments that sell alcohol

Cafés on State Roads

Size Range:

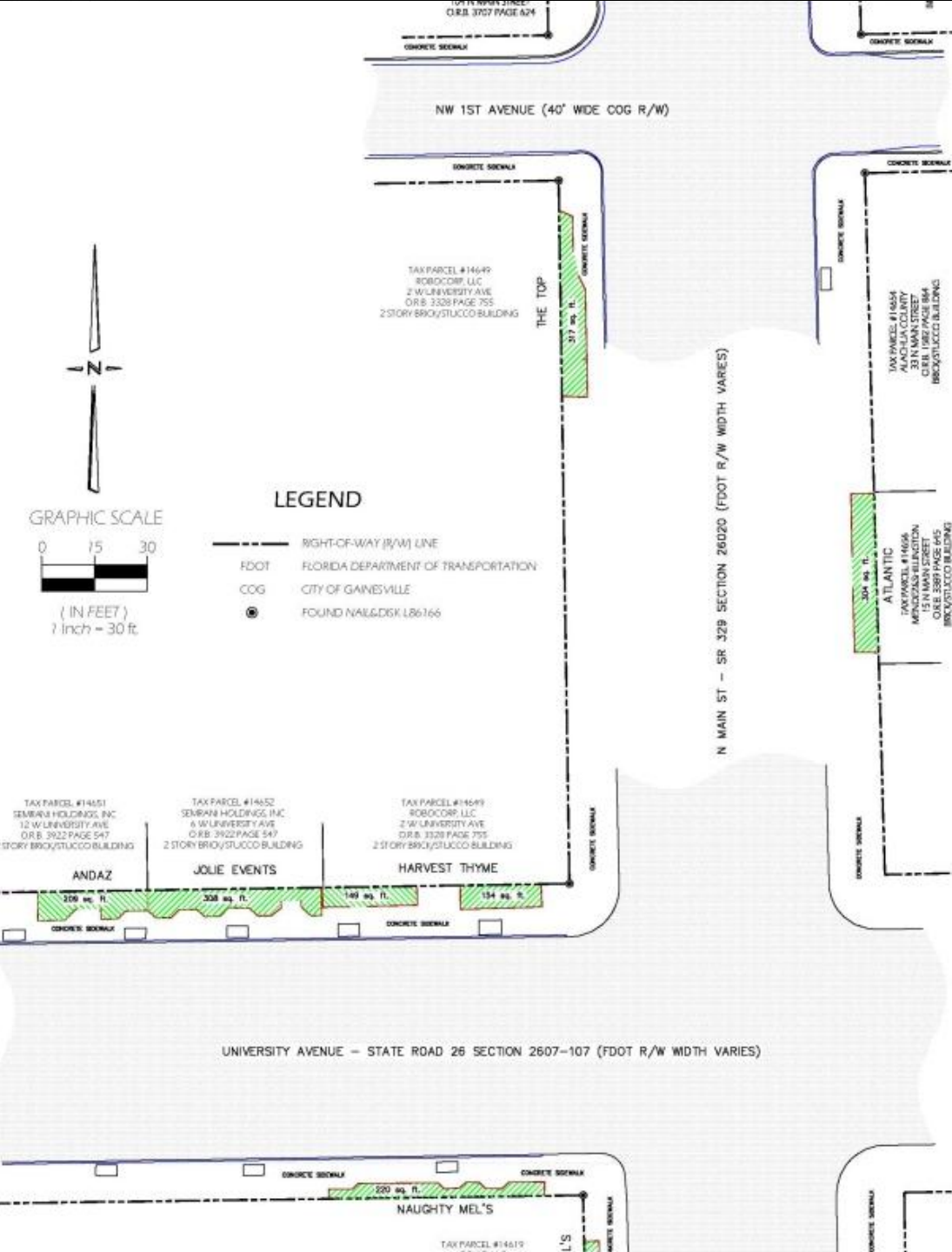
149 SF – 317 SF

Proposed Annual Lease Fee:

\$298.00 - \$698.00

Annual License Fee:

\$60.00



Action Steps

- Develop implementation plan
- Request City Commission approval
- Enter into agreement with FDOT
- Amend LDC to include FDOT requirements