



City Emergency Management



Operational Levels
Level I – Emergency
Level II – Accelerated
Level III - Normal

Emergency Management Coordination

EM Coordinator – Don Sessions, GFR District Chief

Assistant EM Coordinator - David McIntire, GFR Captain



Responsibilities:

Emergency Preparedness

Assistance in Departmental Emergency Operations Plans

Assistance in Continuity of Operations Plans

Maintenance of City Emergency Operations Plan

Multi-Year Training and Exercise Planning

Emergency Management

Coordination of the Emergency Response Team

Coordination of Emergency Response Team Member Training

Coordination of Readiness for the Emergency Operations Center

Local Mitigation Strategies

Assistance in Mitigation Strategy Initiatives

City Representative for Local Mitigation Strategies

Member of County LMS Workgroup

Emergency Management An All-Hazards Plan

General EM Axioms:

- All disasters are managed locally
- Provide effective coordination, support, and communication
- An all-hazard plan manages the consequences, not the threat
- Cities turn to counties; counties to state; and state to Federal

Florida Statutes:

- Each County shall have an EM agency per ss.252.31 through 252.90
 - Declare evacuations
 - Open shelters
 - Coordinate State and Federal assistance
- Each County shall serve as liaison and coordinator for municipalities' requests for state and federal assistance per ss.252.38 (1)c
- Municipalities are encouraged to create emergency management programs that work in coordination with their County per ss.252.38 (2)
- Municipal emergency management plans must be consistent with the county emergency plan per ss. 252.38 (2)

Emergency Management An All-Hazards Plan

A Local Declaration of Emergency

Per ss. 252.38(3)5, municipalities may declare a local state of emergency; duration is limited to 7 days and may be extended as necessary in 7-day increments.

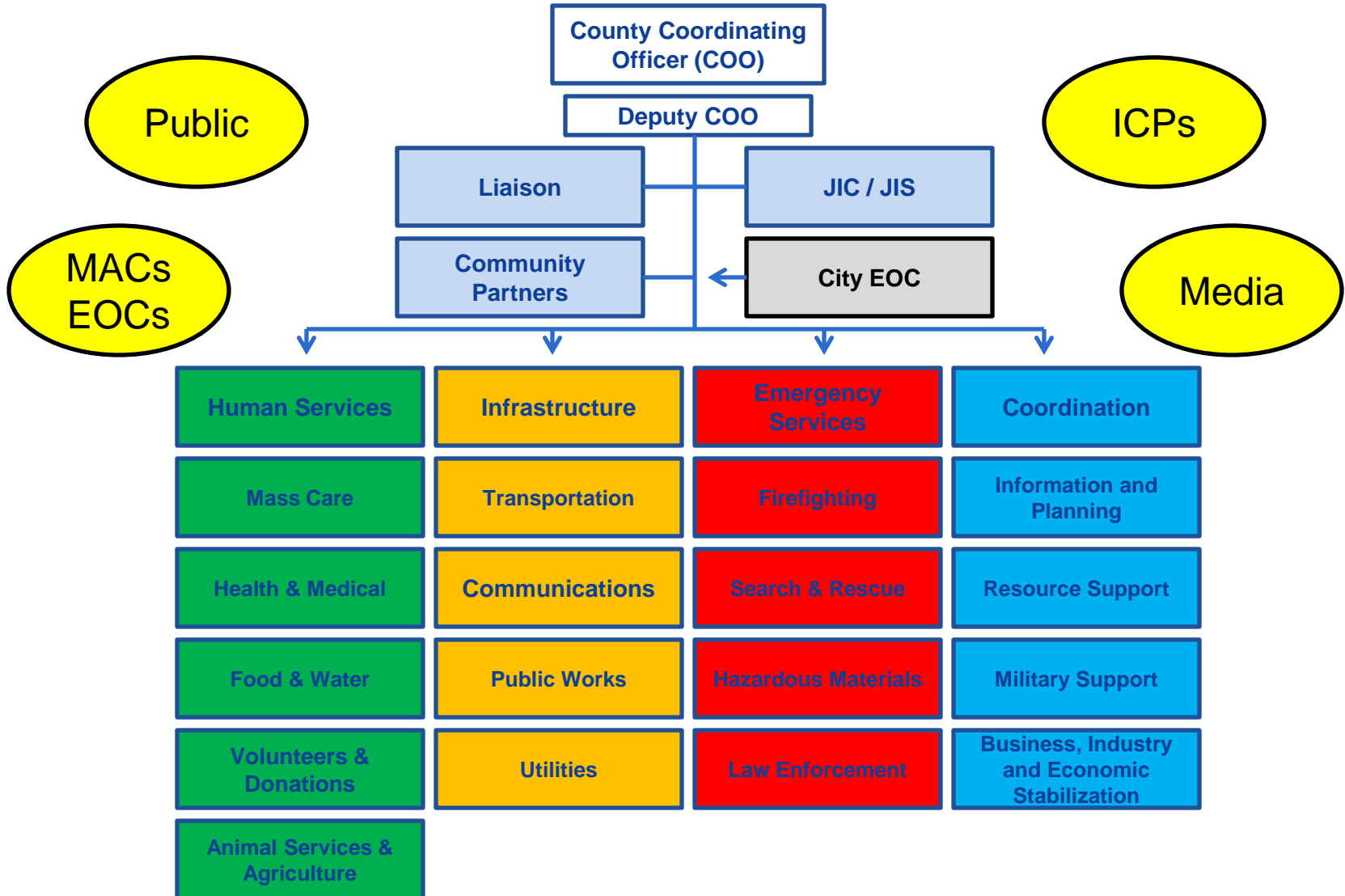
By doing so, municipality has the ability to waive procedures and formalities required of the political subdivision by law pertaining to:

- a. Performance of public work and taking whatever prudent action is necessary to ensure the health, safety, and welfare of the community.
- b. Entering into contracts.
- c. Incurring obligations.
- d. Employment of permanent and temporary workers.
- e. Utilization of volunteer workers.
- f. Rental of equipment.
- g. Acquisition and distribution, with or without compensation, of supplies, materials, and facilities.
- h. Appropriation and expenditure of public funds.

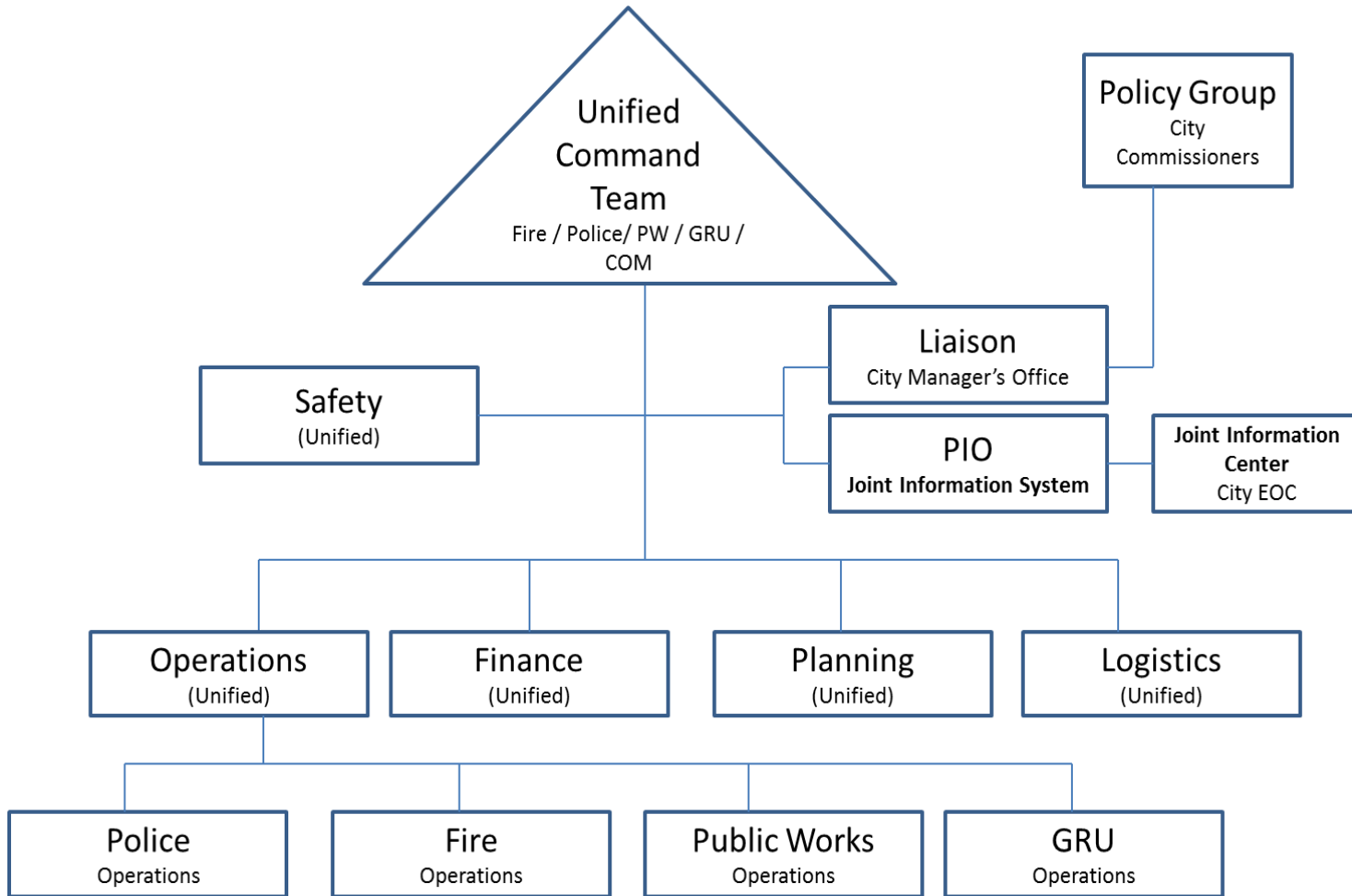
Emergency Management Internal Partners



Emergency Management External Partners



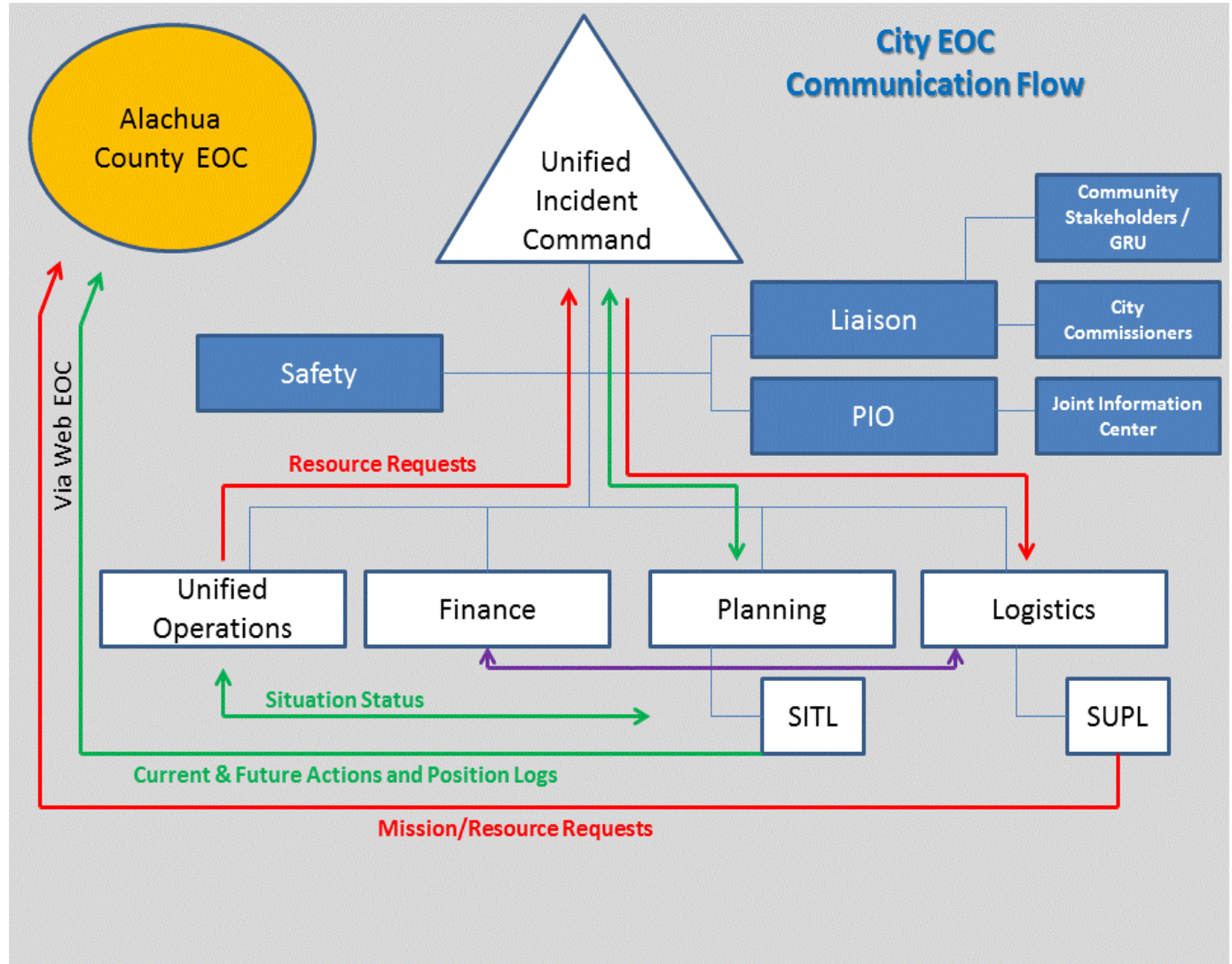
City Emergency Management Team



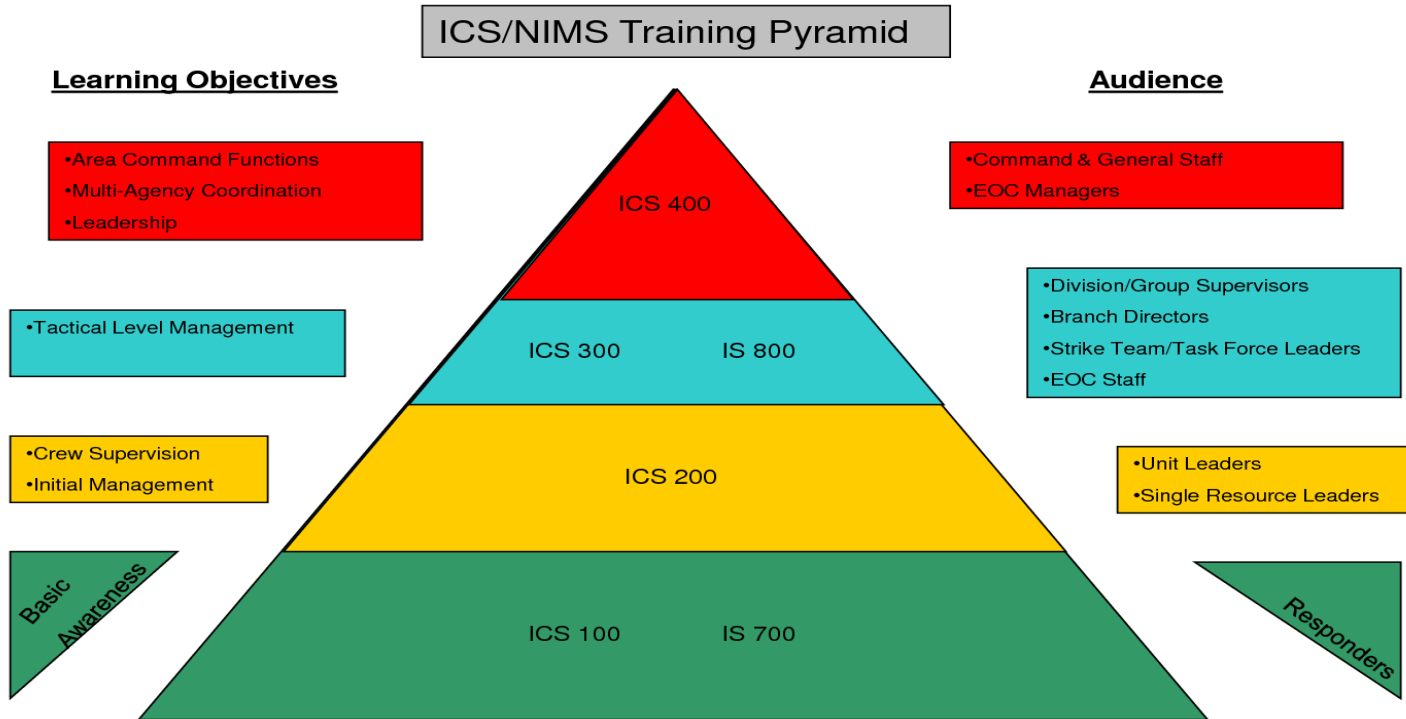
- Communicates potential threats
- Meets Monthly
- Reviews and updates CEOP annually
- Represents City in County level EM training, meetings, and events
- Participation in Local, County and State EM readiness drills and exercises

Emergency Management Assistance

- Communicates Situation Status
- Shares Current and Future Actions
- Shares significant events
- Channels external resource requests through ACEM EOC during activations
- Provides Liaison to County Emergency Support Functions



Emergency Management Required Team Member Training



Commissioner Support Opportunities

■ **Assistance**

- Upon request of Unified Command, convey specialized communication to Public and Media prepared by City's Joint Information Center (JIC).

■ **Observation**

- Maintain awareness of situational assessment information and common operating picture released by the City EOC

■ **Support**

- Confirm availability to function during Accelerated and/or Emergency Operation periods to Liaison Officer (CMO)
- Participate in Local, State and Regional briefings coordinated by the Emergency Management Team upon request of the Liaison Officer (CMO).



Questions?

