



Planning Department

# **EAR Progress Report**

## **City Commission**

**June 3, 2010**

**(City Legistar No. 091043)**

# Plan Element Presentations

- **Major Issues**
- **Key Findings**
- **Recommended Changes**



Planning and Development Services

## **EAR Assessment:**

# **Stormwater Management Element**

# Major Issues Assessment

- **Issue 6:** Encourage Infill and Redevelopment in Central and East Gainesville
- **Policy 1.5.2** – Downtown/CCD allows alternative stormwater management

# Major Issues Assessment

- **Issue 8: Strengthen Natural Resource Protection**
- **Policy 1.7.2** - Acquisition of wetland areas. Update to address acquisition of other environmentally sensitive lands
- **New policy** - to adopt LID practices & standards

# Key Findings for Stormwater Management Element

- City has substantially met the goals, objectives & policies
- Currently establishing Depot Park - a combined public park (& stormwater park that will serve the downtown area)

# Key Findings for Stormwater Management Element

- **Duval Neighborhood Stormwater Park** (505 NE 21<sup>st</sup> Street) - urban stormwater retrofit project will improve water quality in Newnans Lake & provide trails for passive recreation
- **Sweetwater Branch/Paynes Prairie Sheetflow Restoration Project** – will restore sheetflow to Paynes Prairie & eliminate discharges of excess nitrogen & other pollutants from Sweetwater Branch into Alachua Sink

# Key Findings for Stormwater Management Element

- **Stormwater management utility** remains effective funding source
- **NE Boulevard/Duck Pond Improvements Project** completed 2004
- **Hogtown Creek Sediment Project** reduced sediment that collected at NW 34<sup>th</sup> Street & Hogtown Creek, reducing flooding
- **SW 5<sup>th</sup> Avenue Tumblin Creek Regional Stormwater Park Basin** improves water quality of creek. Basin provides stormwater treatment for commercial & residential development.



# Key Findings for Stormwater Management Element

- **Funding is a challenge.**  
Budgetary limitations may delay programmed projects. State & federal grants & earmarks will continue to be pursued.

# Recommended Changes - Stormwater Mgmt Element

- Most proposed changes involve new target dates or revised language
- Need revised list of Level 1 capital improvements for 2010 through 2020
- Policy 1.7.3 - Update for consistency with wetland requirements of the Conservation, Open Space and Groundwater Recharge Element



Planning and Development Services

## **EAR Assessment:**

# **Conservation, Open Space & Groundwater Recharge Element**

# Major Issues Assessment

- **Issue 2: Establish Policies for Reduction of Greenhouse Gases w/in the City**
- **Policy 2.5.2** – Encourage transportation choice
- **Policy 2.6.2** – Green Building Program
- **Policy 3.1.1** – Tree planting goals
- Policies achieved - revise 2.5.2 & 2.6.2 to state relationship to greenhouse gas reduction
- **New policies** - greenhouse gas reduction, energy conservation
- **New policy** – tree canopy vs. solar electrical generation

# Major Issues Assessment

- **Issue 8: Strengthen Natural Resource Protection**
- **Policy 1.1.1 f.** - Uplands. Revise for better implementation
- **Policy 1.1.2** - Environmentally significant areas. Revise after adoption of 2010 environmental code update
- **Policy 3.1.1** - Tree planting program. Consider higher annual numbers
- **Policy 4.2.2** – Water quality Hogtown Creek watershed. Revise to address wider range of pollutants
- **New policies** – re: strategic ecosystems & other features included in 2010 environmental code update
- **New policies** – re: potential changes to water supply planning in late 2010

# Key Findings for Conservation Element

- City has substantially met CON goals, objectives & policies
- LDC has protections for creeks, lakes, wetlands, wellfields, groundwater recharge, but wetland acreage & function have been lost w/in city limits.
- Staff has effectively coordinated w/County & WMDs re: protection of natural resources

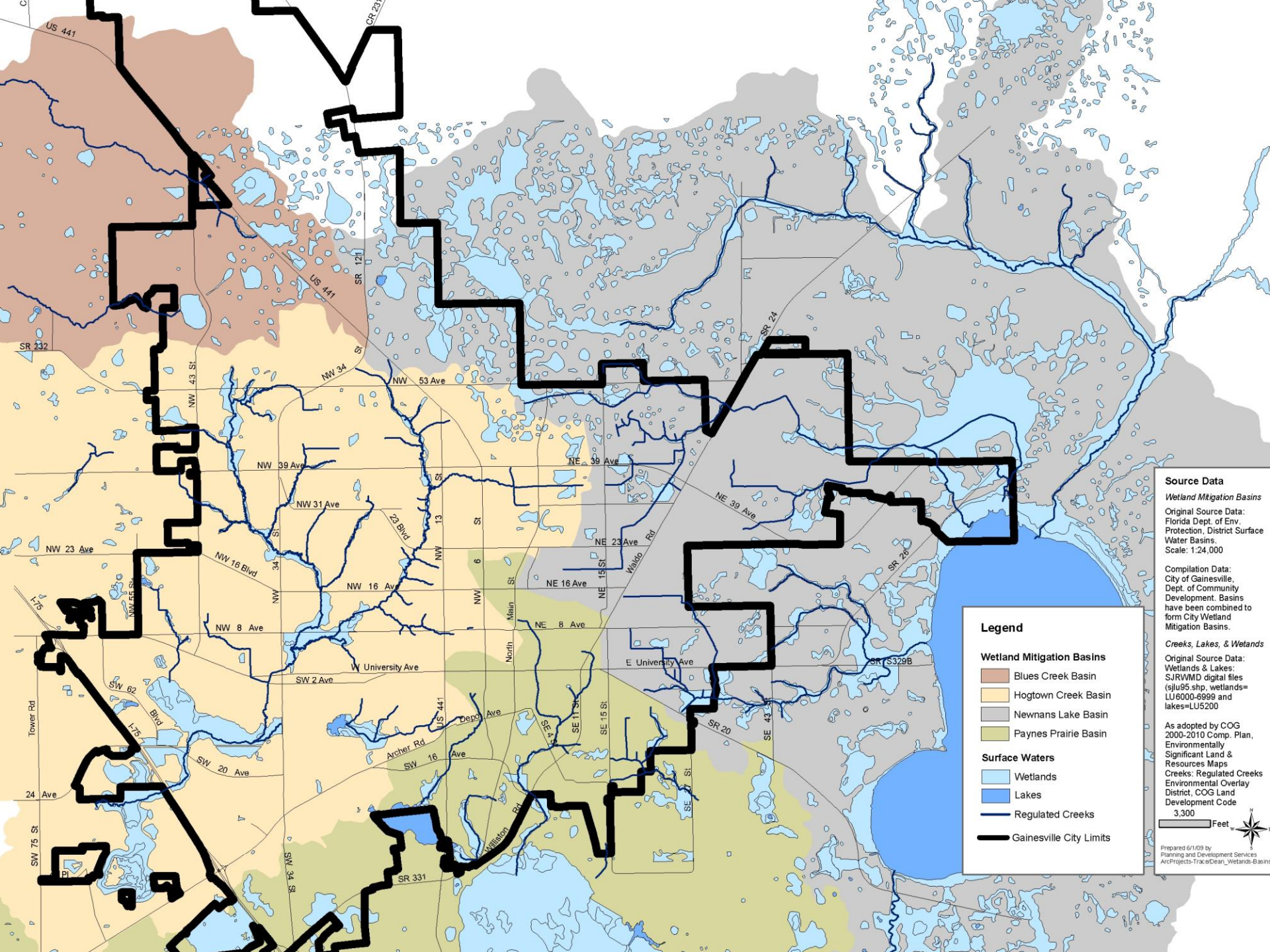
# Recommended Changes - Conservation Element

- **Most are minor**
- **Several policies no longer needed – Delete**
- **Revise 1.1.1 f.** – provide more guidance for uplands protection
- **Delete 1.1.5** – basin mgmt plans cannot be developed with current/foreseeable staff resources
- **Policy 3.1.1** – consider increasing annual no. trees to be planted
- **Revise 4.2.2** to address more water pollutants

# Recommended Changes - Conservation Element

- **Add new/strengthen existing policies** re: greenhouse gas reduction and energy conservation
- **Add policy** tree canopy vs. solar electrical energy generation
- **Add policies** to address potential changes re: water supply planning
- **Update policies** for stronger natural resource protections expected w/2010 environmental update
- **Objective 2.1** (maintain wetland acreage & function in listed basins) – revise to meet acreage requirement, or delete acreage requirement. Plan Board recommends revision to meet acreage requirement.





**Source Data**

*Wetland Mitigation Basins*  
 Original Source Data:  
 Florida Dept. of Env.  
 Protection, District Surface  
 Water Basins.  
 Scale: 1:24,000

Compilation Data:  
 City of Gainesville,  
 Dept. of Community  
 Development. Basins  
 have been combined to  
 form City Wetland  
 Mitigation Basins.

*Creeks, Lakes, & Wetlands*  
 Original Source Data:  
 Wetlands & Lakes:  
 SJRWMD digital files  
 (sjrwmd\_swp\_wetlands=  
 LU6000-6999 and  
 lakes=LU5200

As adopted by COG  
 2000-2010 Comp. Plan,  
 Environmentally  
 Significant Land &  
 Resources Maps  
 Creeks: Regulated Creeks  
 Environmental Overlay  
 District, COG Land  
 Development Code  
 3.300

Prepared 6/1/09 by  
 Planning and Development Services  
 AirProjects-Trace/Dean\_Wetlands-Basins

**Legend**

**Wetland Mitigation Basins**

- Blues Creek Basin
- Hogtown Creek Basin
- Newmans Lake Basin
- Paynes Prairie Basin

**Surface Waters**

- Wetlands
- Lakes
- Regulated Creeks
- Gainesville City Limits

0 1000 2000 Feet





Planning and Development Services

## **EAR Assessment:**

# **Capital Improvements Element; Financial Feasibility**

# Major Issues Assessment

- **Issue 4: Fund Transportation Choice**
- **5-Year Schedule of Capital Improvements** – Update to show new Transportation Choice revenue sources as they are identified

# Major Issues Assessment

- **Issue 8: Strengthen Natural Resource Protection**
- **New policy** - to address water supply concurrency requirements

# Key Findings for Capital Improvements Element

- City has substantially met the goals, objectives & policies
- Transportation Choice revenue sources need to be added to 5-Year Schedule when identified
- Element should be updated to add public schools and water supply facility requirements

# Recommended Changes – Capital Improvements Element

- Several minor changes to comply with State Statutes
- Policy 1.1.1 - Update to add public schools and reference Ch. 163 and not 9J-5
- Policy 1.1.10 – Amend to include analysis of existing LOS for potential annexations
- Policy 1.2.4 – Amend to include facilities in place no later than Certificate of Occupancy

# Recommended Changes – CIE continued

- Policy 1.2.5 – Amend to include recreation facilities in place no later than 1 year after Certificate of Occupancy
- Policy 1.2.6 – Possible amendment for policy number changes and adding water supply concurrency policy number
- Policy 1.3.6 – Change traffic circulation impacts to transportation mobility impacts

# Financial Feasibility

- **Staff finds the City's Comprehensive Plan meets the State financial feasibility requirements based on review of the 5-Year Schedule of Capital Improvements**