

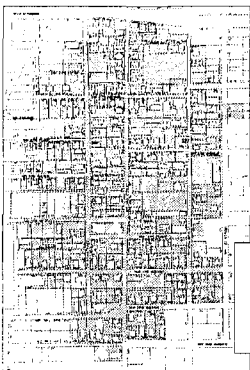
NON-CONTRIBUTING AND CONTRIBUTING

- A non-contributing building, site, structure or object does not add to the historic architectural qualities, historic associations or archaeological values for which a district is significant because,
 - a) it was not present during the period of significance,
 - b) due to alterations, disturbances, additions, or other changes, it no longer possesses historic integrity reflecting its character at that time, or is incapable of yielding important information about the period (this pertains to an archaeological site), or
 - c) it does not independently meet the National Register of Historic Places criteria.
- A contributing building, site, structure or object adds to the historic architectural qualities, historic associations or archaeological values for which a district is significant because,
 - a) it was present during the period of significance and
 - b) possesses historic integrity reflecting its character at that time, or is capable of yielding important information about the period (this pertains to an archaeological site), or
 - c) it independently meets the National Register of Historic Places criteria.

In order to be listed on the local register and National Register of Historic Places, a district must be significant and possess integrity. According to the Local Historic Preservation Ordinance 30-112, a property must fulfill one or more of the following criteria:

IS ASSOCIATED WITH EVENTS that are significant to our local, state, or national history;

- EMBODIES THE DISTINCTIVE CHARACTERISTICS of a type, period, or method of construction;
- REPRESENTS THE WORK OF A MASTER;
- POSSESSES HIGH ARTISTIC VALUES; or
- REPRESENTS A SIGNIFICANT AND DISTINGUISHABLE ENTITY whose components may lack individual distinction.

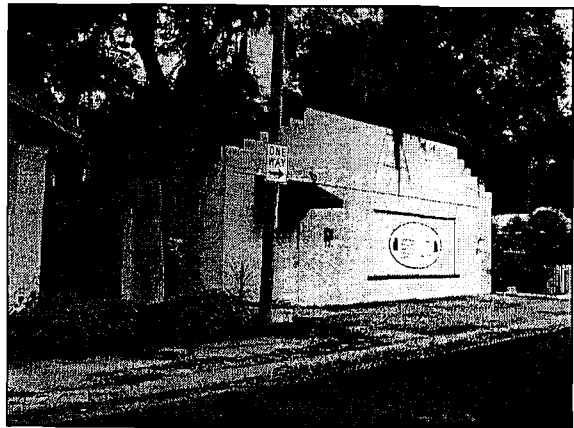
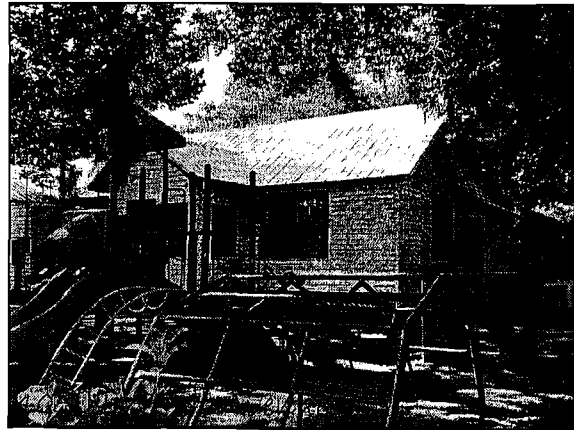


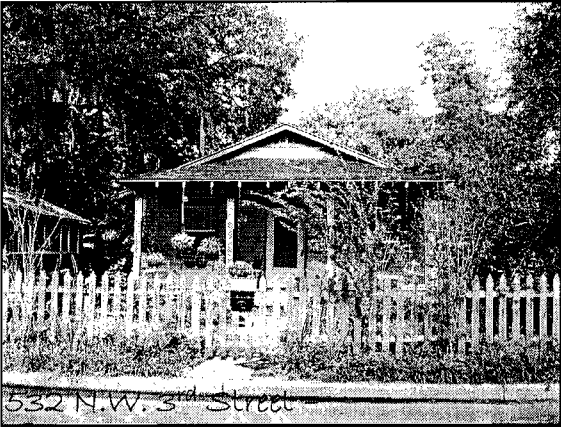
Pleasant Street Historic District
 Greenville, South Carolina
 Commission Established: 1987
 Historic District Commission (Local Board):
 Chairman: [Name] Members: [Names]

050586

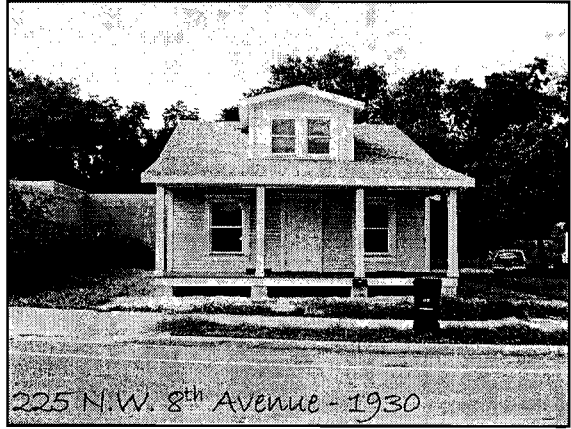
Pleasant Street Historic District

Approved by the City Commission on February 18, 1991
 76ZON-90PB Ordinance #3701

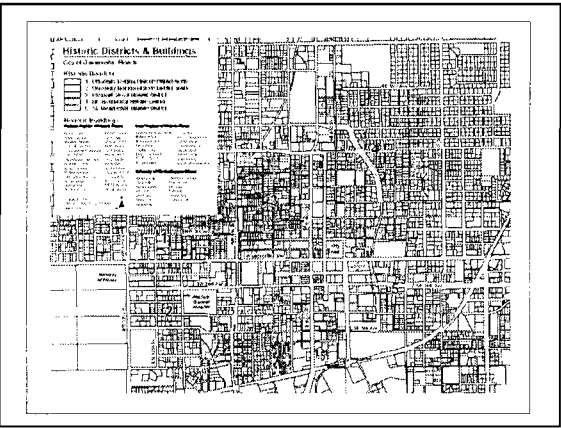




532 N.W. 3rd Street



225 N.W. 8th Avenue - 1930



SOUTHEAST GAINESVILLE HISTORIC DISTRICT

Parcel number	Parcel Site Address	Status Change	Build Date
12188-000-000	0301 SE 6TH ST	Non-Contributing to Contributing	1945
12163-000-000	0433 SE 7TH ST	Non-Contributing to Contributing	1946
12161-000-000	0429 SE 7TH ST	Non-Contributing to Contributing	1951
12202-001-000	0704 SE 4TH AVE	Non-Contributing to Contributing	1956

PLEASANT STREET HISTORIC DISTRICT

Parcel number	Parcel Site Address	Status Change	Build Date
14289-000-000	0429 NW 4TH ST	Non-Contributing to Contributing	c. 1950
14498-000-000	0405 NW 4TH AVE	Non-Contributing to Contributing	c. 1940
14351-000-000	0225 NW 8TH AVE	Contributing to Non-Contributing	1930
14336-000-000	0436 NW 2ND ST	Non-Contributing to Contributing	1938
14330-001-000	0532 NW 3RD ST	Non-Contributing to Contributing	c. 1940