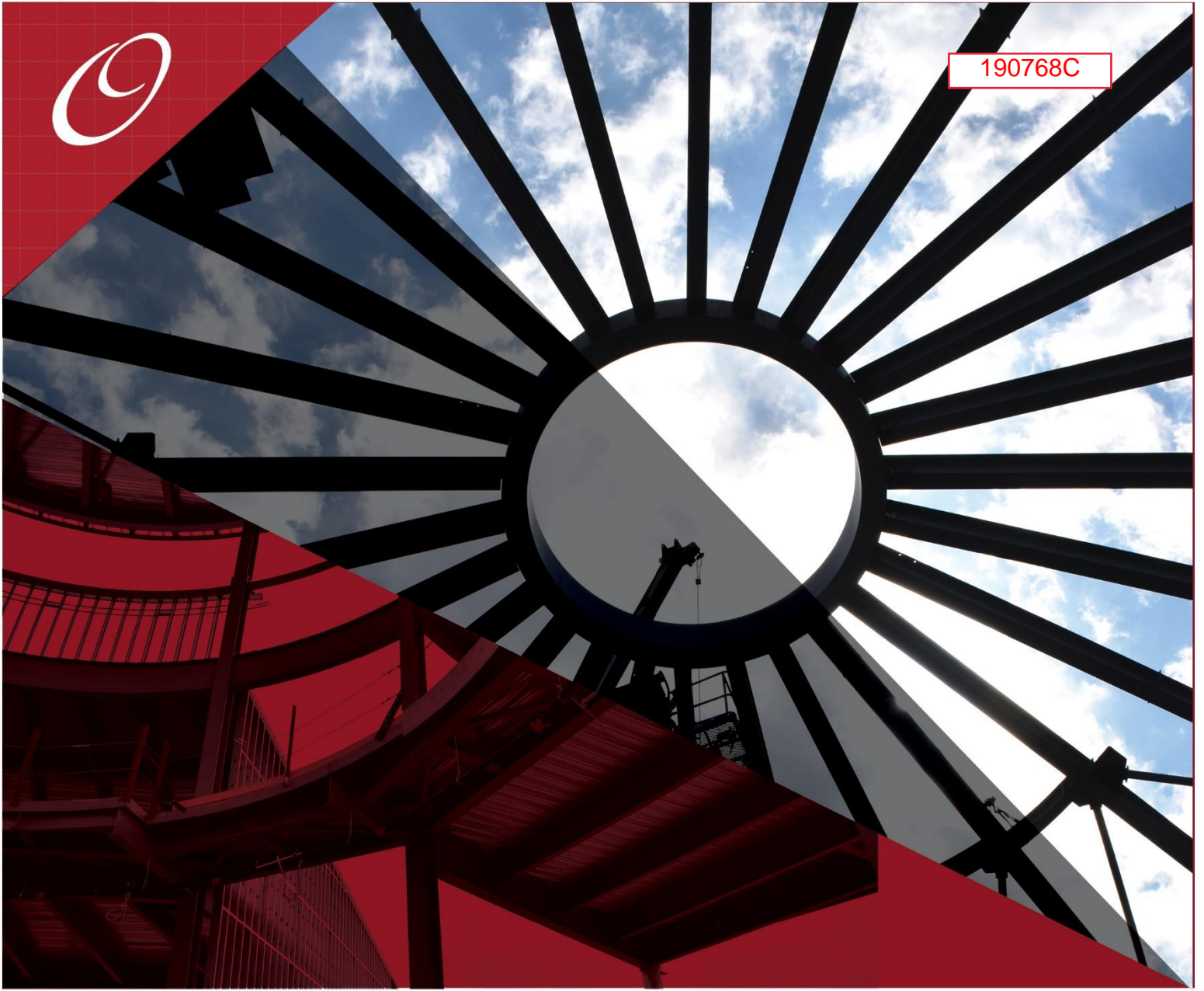




190768C



Depot Park Electrical Improvements for City of Gainesville

Guaranteed Maximum Price, Revision 2

December 16, 2019





December 16, 2019

Betsy Waite
Director
Wild Spaces & Public Places
306 NE 6th Avenue, Suite B
Gainesville, FL 32601

**Re: Depot Park Electrical Improvements for City of Gainesville
Proposal for Construction Management Services**

Ms. Waite,

Oelrich Construction, Inc. is pleased to present this Guaranteed Maximum Price for the construction required to complete the **Electrical Improvements** at **Depot Park** for the **City of Gainesville** as specified on the construction documents provided by JBrown Professional Group Inc dated 08-26-2019, based on the color coded priority options provided via email dated 09-25-2019, and added receptacles provided via email dated 12-12-2019.

The Guaranteed Maximum Price for Option 1 (Yellow and Purple Improvements) is:

Four Hundred Fifty-Six Thousand, Nine Hundred Ninety-One Dollars.....\$456,991.00

Options 2, 3 & 4 were presented in the previous GMP proposal dated 10-25-2019 and were not accepted.

Please find the attached GMP Overview (Exhibit A), GMP Breakdown (Exhibit B), Qualifications (Exhibit C), List of Construction Documents (Exhibit D), Team Personnel (Exhibit E) and Schedule (Exhibit F) used to generate this GMP.

We appreciate the opportunity to be a part of this project, and we look forward to its successful completion. Please feel free to contact me at any time if you have any questions.

Sincerely,
Oelrich Construction, Inc.

Matthew J Marino
Preconstruction Manager

275 NW 137th Drive
Suite A
Jonesville, Florida 32669

oelrichconstruction.com

352-745-7877

CGC1510579

WILD SPACES & PUBLIC PLACES
 Depot Park Electrical Improvements



Exhibit A – GMP Estimate Overview

Depot Park Electrical Improvements for City of Gainesville Oelrich Construction GMP Overview		
Bid Package	Package Description	Final Construction Documents
Option 1 (Base Scope): Yellow and Purple Improvements		
	General Conditions	75,757
BP 02A	Demolition	4,200
BP 03A	Cast-in-Place Concrete	9,210
BP 26A	Electrical	250,508
BP 31A	Sitework	21,688
BP 32B	Planting and Landscaping	32,000
Total of Bid Packages		393,363
	Contingency	6,667
Total of Project Costs		400,030
	Builders Risk Insurance	1,680
	Payment and Performance Bonds	5,644
	General Liability Insurance	4,479
	Permit	3,613
	Impact Fees	-
Subtotal		415,446
	Preconstruction Fee	8,309
	CM Fee	33,236
Total Base Amount		456,991

WILD SPACES & PUBLIC PLACES

Depot Park Electrical Improvements



Exhibit B – GMP Estimate Breakdown

Depot Park Electrical Improvements for City of Gainesville										
Oelrich Construction, Inc.										
GMP Option 1 (Base Scope): Yellow and Purple Improvements										
December 16, 2019										
Item Description	Qty	Unit	Labor		Material		Subcontractor		Totals	Sub Totals
			unit price	amount	unit price	amount	unit price	amount		
Project Duration	11	weeks								
Project or Program Area	-	sf								
Number of Building Levels	-	level								
General Conditions										
Project Manager	4	weeks	2,456	9,824	-	-	-	-	9,824	
Asst Project Manager	8	weeks	1,608	12,864	-	-	-	-	12,864	
Senior Superintendent	11	weeks	2,520	27,720	-	-	-	-	27,720	
Asst Superintendent	6	weeks	1,600	9,600	-	-	-	-	9,600	
Document Reproduction	1	sets	-	-	275	275	-	-	275	
Safety Supplies	1	ls	-	-	200	200	-	-	200	
Testing Services	1	ls	-	-	-	-	3,500	3,500	3,500	
Temporary Electricity	0	months	-	70	0	0	-	-	0	
Temporary Water	0	months	-	50	0	0	-	-	0	
Field Office Rental	0	months	-	475	0	0	-	-	0	
Field Office Pump Service	0	months	-	150	0	0	-	-	0	
Copies and Copy Machine	3	months	-	156	468	-	-	-	468	
Sanitary Facilities, Toilets	3	months	-	95	285	-	-	-	285	
Office Supplies	1	ls	-	750	750	-	-	-	750	
Jobsite Security	0	months	-	110	0	0	-	-	0	
Small Tools	1	ls	-	250	250	-	-	-	250	
Vehicle Fuel	3	months	-	350	1,050	-	-	-	1,050	
Jobsite Vehicle	3	months	-	450	1,350	-	-	-	1,350	
Temporary Fencing	300	lf	-	5.70	1,710	-	-	-	1,710	
Temporary Double Gates	1	ea	-	250	250	-	-	-	250	
Temporary Project Signs	1	ls	-	600	600	-	-	-	600	
Temporary Protection	1	ls	-	500	500	-	-	-	500	
Temporary Weather Protection	1	ls	-	500	500	-	-	-	500	
Continuous Cleaning	11	days	-	135	1,485	-	-	-	1,485	
Dumpsters	3	pulls	-	275	825	-	-	-	825	
Final Cleaning	1	ls	-	1,350	1,350	-	-	-	1,350	
Closeout Submittals et al	1	ls	-	150	150	-	-	-	150	
As-Builts	1	sets	-	250	250	-	-	-	250	
										75,757
BP-02B Hazardous Materials										
YELLOW										
Hauloff contaminated soils	96	ton	-	-	-	-	40.00	3,840	3,840	
PURPLE										
Hauloff contaminated soils	9	ton	-	-	-	-	40.00	360	360	
										4,200
BP-03A Cast-in-Place Concrete										
YELLOW										
Concrete bases for bollard lights	21	ea	-	-	-	-	230.00	4,830	4,830	
PURPLE										
Concrete pad at SRP3, 6' thick	120	sf	-	-	-	-	18.50	2,220	2,220	
Concrete apron at receptacles and light poles	4	ea	-	-	-	-	195.00	780	780	
Concrete apron at receptacles	12	ea	-	-	-	-	115.00	1,380	1,380	
										9,210
BP-26A Electrical										
YELLOW										
Bollard light fixtures work	1	ls	-	31,715	31,715	57,746	57,746	57,746	89,461	
PURPLE										
Receptacles work	1	ls	-	54,000	54,000	98,357	98,357	98,357	152,357	
Added Receptacles 12, 13, 89, 90	1	ls	-	-	-	8,690	8,690	8,690	8,690	
										250,508



WILD SPACES & PUBLIC PLACES
Depot Park Electrical Improvements

Exhibit B – GMP Estimate Breakdown

BP-31A Sitework						
YELLOW						
Contaminated soil onsite containment	177 sy	-	-	9.00	1,593	1,593
Stockpile soils onsite, loader and operator	136 hrs	-	-	125.00	17,000	17,000
Import Clean A2-4 Fill	59 cy	-	-	15.00	885	885
PURPLE						
Contaminated soil onsite containment	15 sy	-	-	9.00	135	135
Stockpile soils onsite, loader and operator	16 hrs	-	-	125.00	2,000	2,000
Import Clean A2-4 Fill	5 cy	-	-	15.00	75	75
						21,688
BP-32B Planting and Landscaping						
YELLOW						
Patch/Repair Landscape & Irrigation Allowance	0.50 al	-	-	40,000	20,000	20,000
PURPLE						
Patch/Repair Landscape & Irrigation Allowance	0.30 al	-	-	40,000	12,000	12,000
						32,000
Cost of Work Subtotal					393,363	393,363
Construction Contingency	2.00%					6,667
Subtotal					6,667	400,030
Builders Risk Insurance						1,680
Payment and Performance Bond						5,644
General Liability Insurance	0.98%					4,479
Permit						3,613
Impact Fees						-
Subtotal					15,416	415,446
Preconstruction Fee	2.00%					8,309
CM Fee	8.00%					33,236
Total Project						456,991

Exhibit C – GMP Qualifications

This estimate includes the Electrical Improvements at Depot Park for the City of Gainesville for Option 1, Base Scope; Construction of Yellow and Purple Improvements. Options 2, 3 & 4 were presented in the previous GMP proposal dated 10-25-2019 and were not accepted.

This estimate is based on the Final Construction Drawings produced by Brown Professional Group, Inc. dated 08-26-2019, the color-coded priority options provided via email dated 09-25-2019, and the qualifications below.

Due to current construction market conditions, this proposal must be accepted within 30 days and construction must begin within 60 days from the date of this submittal.

Division 01- General Conditions

- The estimated project construction duration for Option 1 will be eleven (11) weeks.
- Work will be accomplished during normal work hours. This will include various activities which will cause loud noises.
- A Builder's Risk Insurance and a General Liability Insurance policy has been included in this proposal.
- A Payment and Performance Bond has been included in this proposal.
- We have included costs for City of Gainesville permit in this proposal based on contract dollar value.
- We have not included costs for any FDEP or special permits in this proposal.
- We have not included costs for impact fees.
- No provisions for temporary power/water are included in this proposal. It is assumed that we will have some form of available power/water from the existing utilities on site for the duration of the project.
- No provisions for temporary job site office trailer is included.
- All required temporary enclosures, storage facilities, dumpsters, toilets, signage, etc. have been included as a part of the project.
- A 2% construction management contingency is included to cover development of design, estimating variances, and unexpected events in the construction process and schedule.
- Our schedule and costs do not reflect lost time due to park activities/events We assume that we will have full access to the site for the entire duration of the project.

Division 02- Existing Conditions

- Hazardous materials removal and mitigation is included in this proposal as described below.
 - We have assumed that any soils 30" or less below grade (6" of Archer sand over 24" of clay fill) are not contaminated except for the southeast quadrant of the site, depicted on sheet E1.4 where we have assumed any excavations will encounter contaminated soils.
 - We have assumed that contaminated soils will be encountered where conduit crosses existing walkways.
 - Contaminated soils shall be excavated, tested, hauled offsite, and properly disposed.
- Relocation or repair of existing M/E/P Systems not affected by this work is excluded. We are not responsible for the existing site systems.

Exhibit C – GMP Qualifications

Division 03- Concrete

- 4” and 6” Concrete pads are included per drawing details.
- Concrete bollard light bases are included as cast-in-place.

Division 26- Electrical

- Includes all conduit, conductors, and fixtures shown on plans for the new power and lighting systems.
- Includes all retrofitting the existing light poles with curved back boxes per detail 3 on sheet E0.1.
- Includes deleting receptacles #63 & #64 & relocating receptacle #12 to #64’s location, #13 to #63’s location.
- Includes installation of receptacles #89 & #90 as drawn.

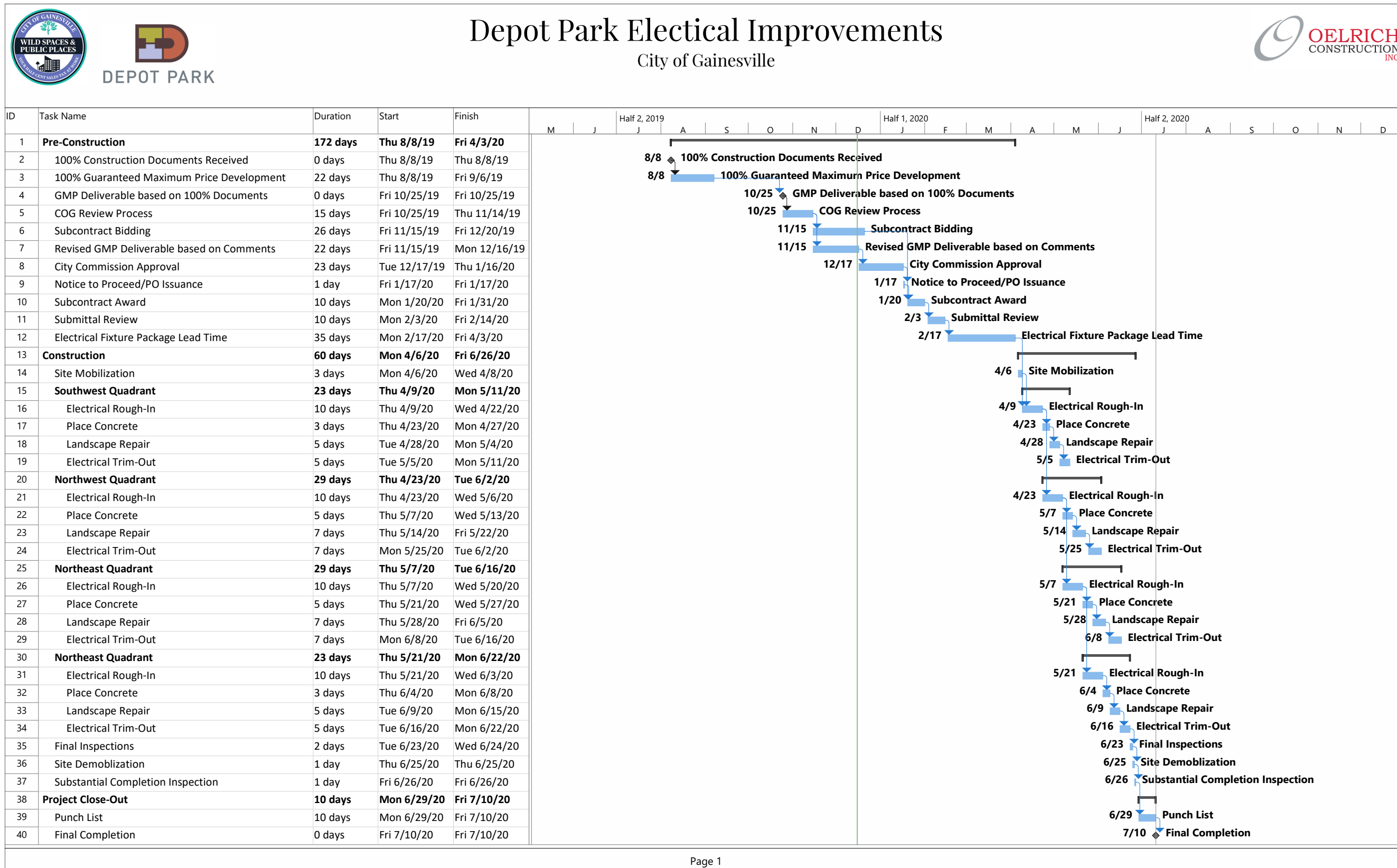
Division 31- Earthwork

- Contaminated soils shall be replaced with clean A2-4 fill.

Division 32- Exterior Improvements

- An allowance is included for repair of landscape and irrigation items impacted by installation efforts. This shall include sodding of disturbed areas.

Exhibit F – Schedule





352.745.7877

OELRICHCONSTRUCTION.COM



Gainesville Office:
275 NW 137th Drive, Ste A
Jonesville, FL 32669

Orlando Office:
428 S. Dillard Street, Ste 103
Winter Garden, FL 34787