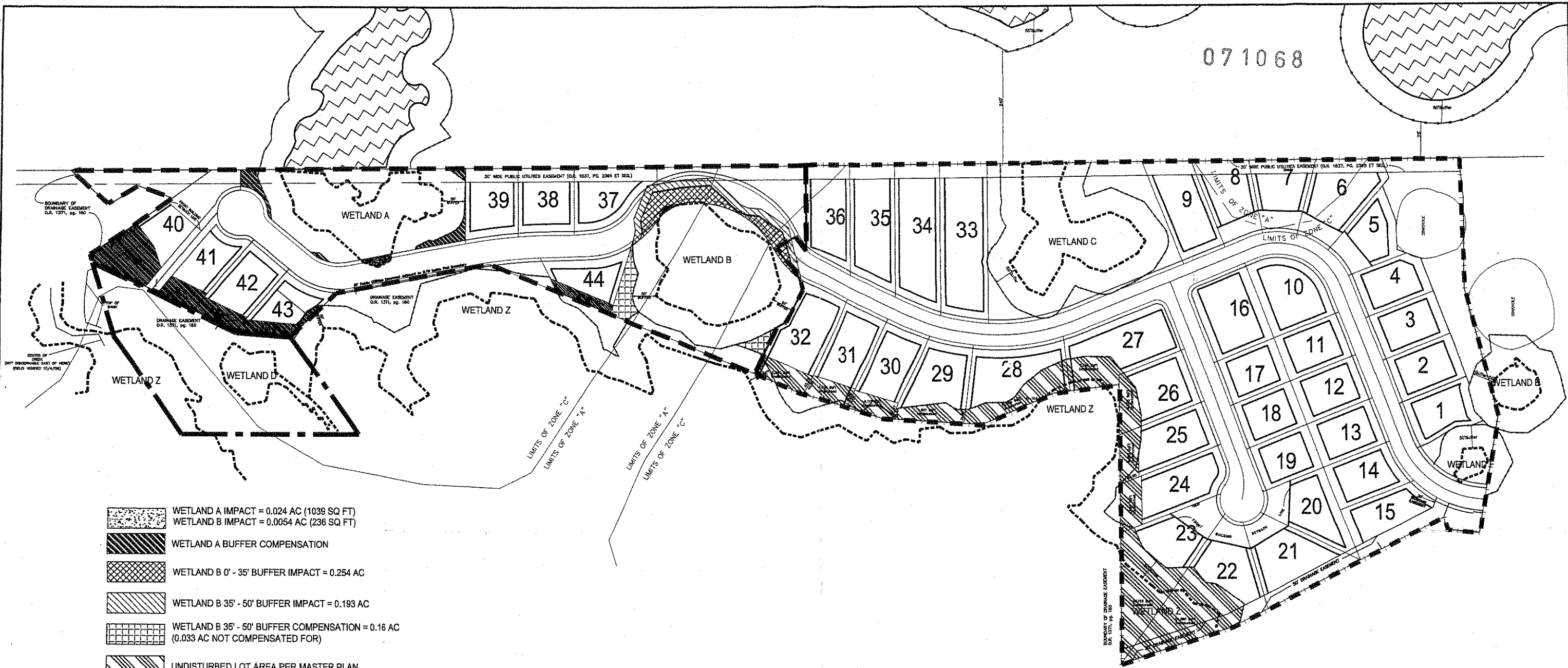


071068

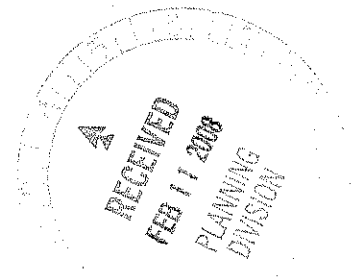


- WETLAND A IMPACT = 0.024 AC (1039 SQ FT)
WETLAND B IMPACT = 0.0054 AC (236 SQ FT)
- WETLAND A BUFFER COMPENSATION
- WETLAND B 0' - 35' BUFFER IMPACT = 0.254 AC
- WETLAND B 35' - 50' BUFFER IMPACT = 0.193 AC
- WETLAND B 35' - 50' BUFFER COMPENSATION = 0.16 AC
(0.033 AC NOT COMPENSATED FOR)
- UNDISTURBED LOT AREA PER MASTER PLAN
- APPROXIMATE LOCATION OF OFF-SITE WETLANDS

- MITIGATION AREA = 2.4 AC
- PHASE 2 = 26.5 AC
- PHASE 3 = 10.1 AC
- WETLAND LINE
- 50' WETLAND BUFFER

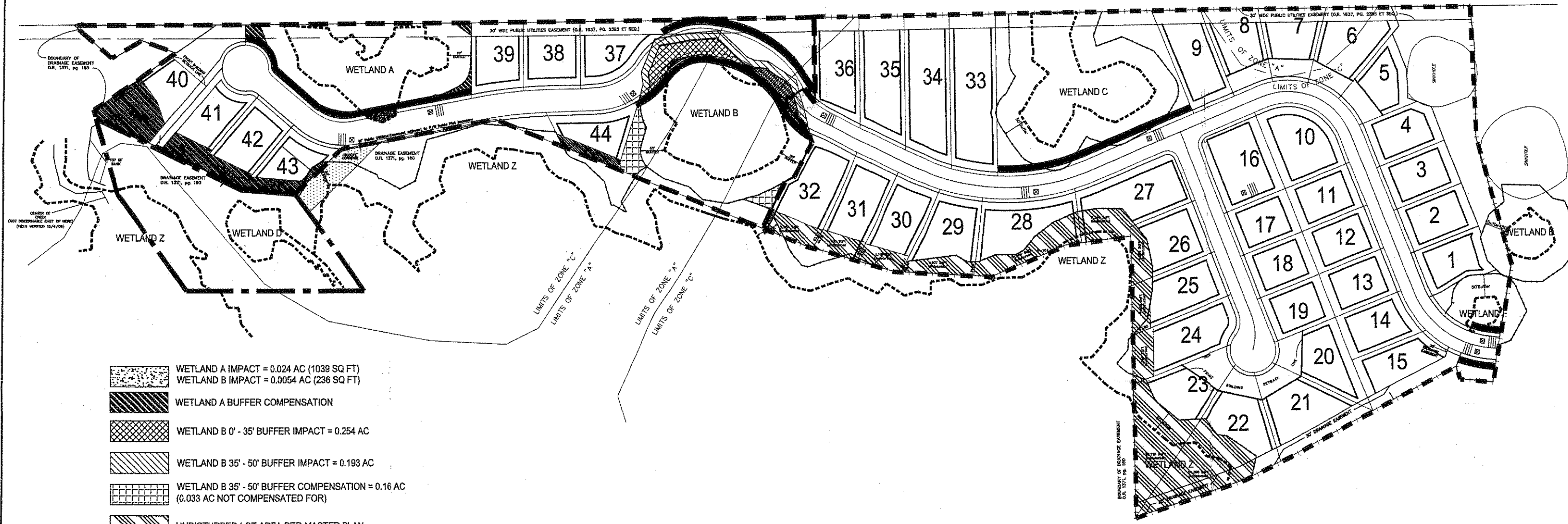
WETLAND ACREAGE WITHIN BOUNDARIES OF PHASES 2 & 3 AND MITIGATION AREA			
WETLAND ID	SIZE	IMPACTED	AVOIDED & PRESERVED
WA	0.91	0.024	0.886
WB	1.22	0.311*	1.217
WC	0.94	0	0.94
WD	0.24	0	0.24
WE	0.18	0	0.18
WZ	1.06	0	1.06
TOTAL	4.55	0.28	4.527

*0.0054 ACRES OF WETLAND IMPACTS, 0.254 ACRES OF IMPACTS ASSOCIATED WITH THE 0-35' BUFFER IMPACT, AND THE 0.033 AC OF IMPACT ASSOCIATED WITH THE 35-50' BUFFER IMPACT.



PERMIT DRAWING 2
 LOT LAYOUT AND WETLAND IMPACTS
 BLUES CREEK UNIT 5
 PHASES 2 AND 3
 ALACHUA COUNTY, FLORIDA





- WETLAND A IMPACT = 0.024 AC (1039 SQ FT)
WETLAND B IMPACT = 0.0054 AC (236 SQ FT)
- WETLAND A BUFFER COMPENSATION
- WETLAND B 0' - 35' BUFFER IMPACT = 0.254 AC
- WETLAND B 35' - 50' BUFFER IMPACT = 0.193 AC
- WETLAND B 35' - 50' BUFFER COMPENSATION = 0.16 AC
(0.033 AC NOT COMPENSATED FOR)
- UNDISTURBED LOT AREA PER MASTER PLAN
- MITIGATION AREA = 2.4 AC
- PHASE 2 = 26.5 AC
- PHASE 3 = 10.1 AC
- WETLAND LINE
- 50' WETLAND BUFFER
- WILDLIFE CORRIDORS (SUPPLEMENTAL PLANTING)
- ENHANCEMENT PLANTING FOR WILDLIFE CORRIDOR
- WILDLIFE CROSSING SIGN
- SPEED DETERRENT

ENHANCEMENT PLANTING FOR WILDLIFE CORRIDORS			
<i>Spartina bakerii</i>	cord grass	1 gallon	3' O.C.
<i>Tripsacum floridanum</i>	fakahatchee grass	1 gallon	3' O.C.
<i>Muhlenbergia capillaris</i>	muhly grass	1 gallon	3' O.C.
<i>Myrica cerifera</i>	wax myrtle	1 gallon	8' O.C.
<i>Ilex vomitoria</i>	yaupon holly	1 gallon	8' O.C.
<i>Quercus virginiana</i>	live oak	3 gallon	15' O.C.
<i>Magnolia grandiflora</i>	southern magnolia	3 gallon	15' O.C.

RECEIVED
 FEB 1 2008
 PLANNING
 DIVISION

PERMIT DRAWING 8
 MITIGATION FOR SECONDARY IMPACTS
 BLUES CREEK UNIT 5
 PHASES 2 AND 3
 ALACHUA COUNTY, FLORIDA

