

Appendix 4
Associated Maps

City of Gainesville
Public Works

Right of Ways vacated
by OR 1772/2471

Creeks

This map is for informational purposes only. It is not intended to be used as a legal document. The City of Gainesville is not responsible for any errors or omissions on this map. For more information, please contact the City of Gainesville, Public Works Department.



City of Gainesville



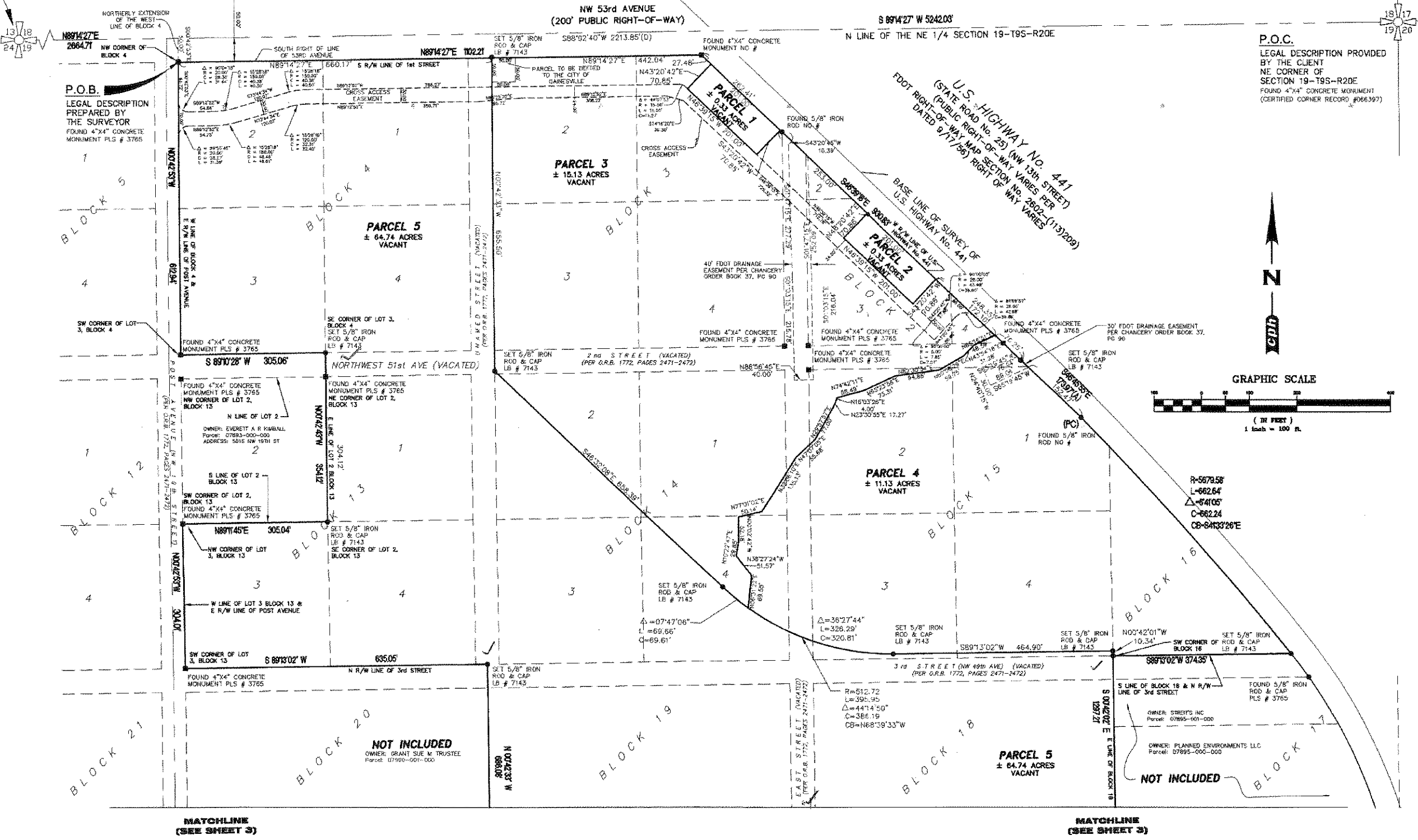
A MINOR SUBDIVISION

AT
THE SOUTHWEST CORNER OF HIGHWAY NO. 441 AND NW 53RD AVENUE
IN

SECTION 19-TOWNSHIP 9 SOUTH-RANGE 20 EAST ALACHUA COUNTY, FLORIDA

P.O.C.
LEGAL DESCRIPTION PREPARED
BY THE SURVEYOR
NW CORNER OF
SECTION 19-T9S-R20E
FOUND 4"x4" CONCRETE MONUMENT
(CERTIFIED CORNER RECORD #0036255)

P.O.C.
LEGAL DESCRIPTION PROVIDED
BY THE CLIENT
NE CORNER OF
SECTION 19-T9S-R20E
FOUND 4"x4" CONCRETE MONUMENT
(CERTIFIED CORNER RECORD #066397)



Engineers Planners Landscape Architects Construction Management Surveyors Environmental Engineers Civil Engineers Mechanical Engineers Electrical Engineers Fire Protection Engineers Professional Engineers Professional Surveyors Professional Planners Professional Landscape Architects Professional Construction Managers Professional Environmental Engineers Professional Civil Engineers Professional Mechanical Engineers Professional Electrical Engineers Professional Fire Protection Engineers	10100 NW 13th St., Suite 100, Ft. Lauderdale, FL 33309 Phone: 954-333-8881 Fax: 954-333-8882
Scale: 1" = 100' Date: JULY 16, 2006 Job No. H2410 File: 130382E.dwg © 2006	Approved: _____ Revision: _____ Date: _____
Activity: _____ Name: _____ Date of Field Survey: _____ Drawn by: T.J.G. Checked by: R.L.R. Approved by: R.A.N. Certificate of Authentication No. 7418	No. _____ Date: _____ Description: REVISIONS 9/28/06 REVISE LOTS 7/28/06 ADD CROSS ACCESS EASEMENT
BOUNDARY SURVEY HOME DEPOT HARTMAN SITE HIGHWAY NO. 441 AND NW 53RD AVENUE	
Sheet No. 2 of 3	

A MINOR SUBDIVISION AT THE SOUTHWEST CORNER OF HIGHWAY NO. 441 AND NW 53RD AVENUE IN SECTION 19-TOWNSHIP 9 SOUTH-RANGE 20 EAST ALACHUA COUNTY, FLORIDA

MINOR SUBDIVISION BOOK 2 PAGE 86

SHEET 3 OF 3

THIS IS NOT A RECORD PLAT

U.S. HIGHWAY No. 441
(STATE ROAD NO. 25) (NW 13th STREET)
(PUBLIC RIGHT-OF-WAY MAP SECTION NO. 2602-(11)3206)
FOOT RIGHT-OF-WAY MAP SECTION OF WAY VARIES
DATED 9/17/56

Engineers
Planners
Landscape Architects
Construction Management

gph

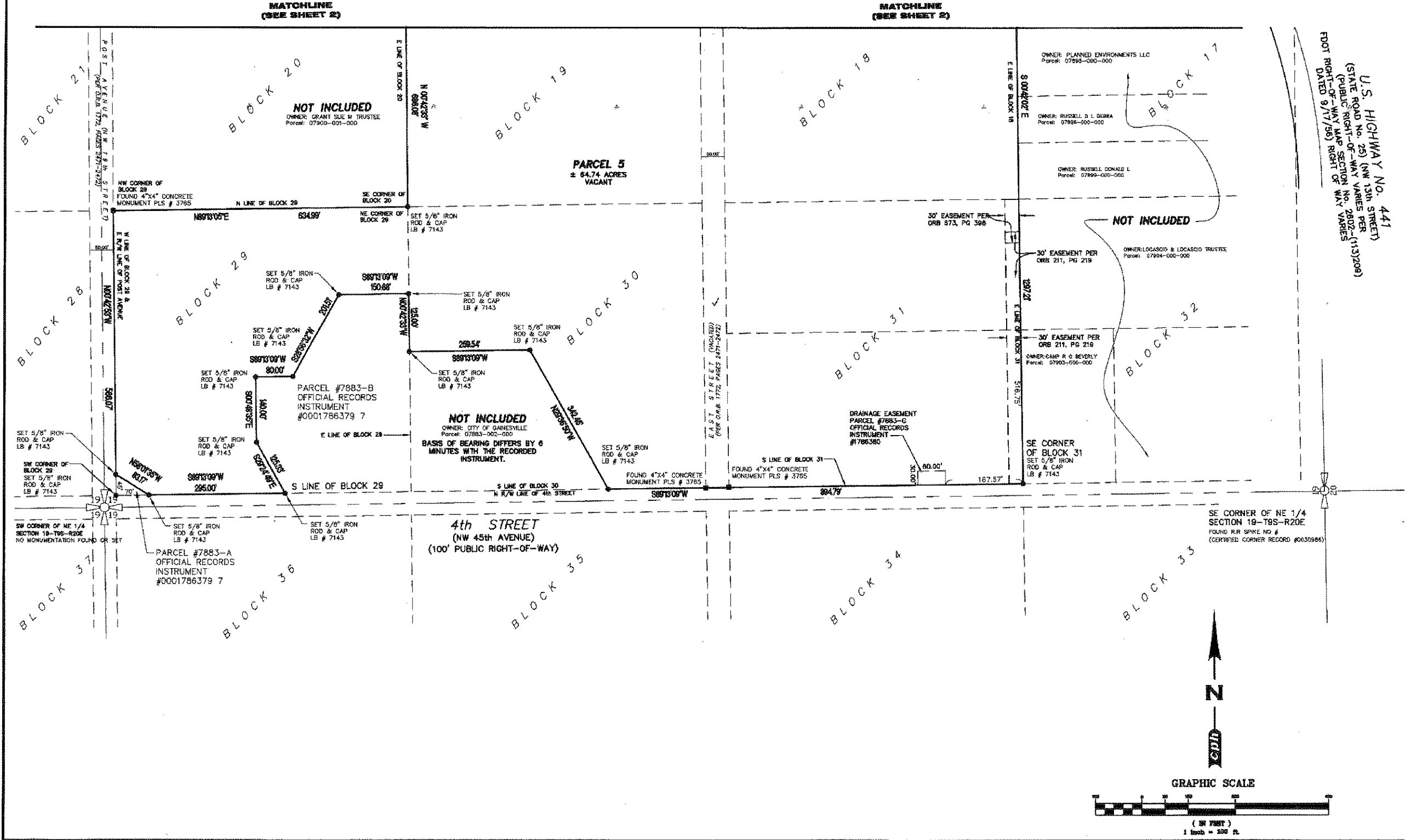
WE DO NOT...
100 West Palmetto Street, Tallahassee, FL 32301 P.O. Box 2066, Tallahassee, FL 32302
Phone: 904/224-4444 Fax: 904/224-8888

Scale:	1" = 100'
Date:	JULY 18, 2006
Job No.:	H2410
File No.:	10000000000000000000
Approved:	[Signature]
Activity:	BOUNDARY SURVEY
Name:	K.S. T.L.G.
Date:	7/18/06
Drawn by:	T.L.G.
Checked by:	R.L.R.
Approved by:	R.A.N.
Activity:	REVISE LOTS
Date:	9/26/06
Drawn by:	[Signature]
Checked by:	[Signature]
Approved by:	[Signature]

BOUNDARY SURVEY

HOME DEPOT
HARTMAN SITE
HIGHWAY NO. 441 AND NW 53 RD AVENUE

Sheet No. **3** of 3



STREET

NW 19TH

NW

17TH

STREET

NW

51ST

STREET

NW 16TH

NW 49TH

AVENUE

AVENUE

20

S. R.

EABOARD

COASTLINE

RAILROAD

25

S. R.

CITY LIMITS

71-72 PB
54-76 BA ✓

55-77 BA

TAX # 7896
70-79 PB ✓

LIMITS

CITY

4620

4620

4618 4619 4620

4546

13TH STREET