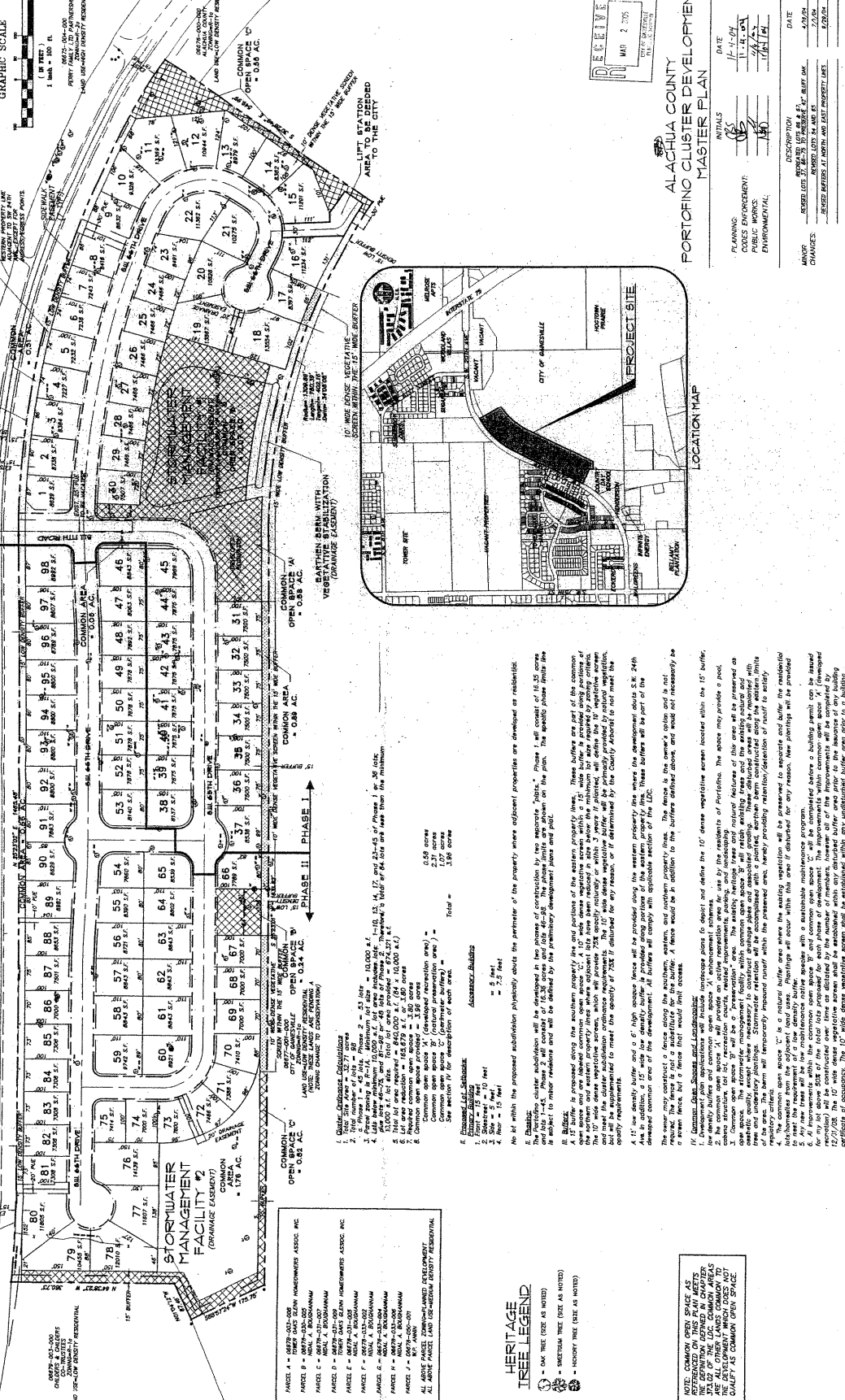
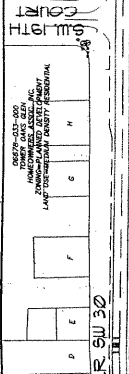








# REVISED PORTOFINO CLUSTER DEVELOPMENT MASTER PLAN



### ALACHUA COUNTY PORTOFINO CLUSTER DEVELOPMENT MASTER PLAN

INITIALS	DATE	DESCRIPTION
PLANNING	11-17-04	
CODES ENFORCEMENT	12-14-04	
ENVIRONMENTAL	01/14/04	
LAND	REMOVED 02/24 AND 05/25	
CHANGES	REMOVED 02/24 AND 05/25	

#### Common Open Space

1. 18' x 5' x 12' = 108 sq. ft.
2. 18' x 5' x 12' = 108 sq. ft.
3. 18' x 5' x 12' = 108 sq. ft.
4. 18' x 5' x 12' = 108 sq. ft.
5. 18' x 5' x 12' = 108 sq. ft.
6. 18' x 5' x 12' = 108 sq. ft.
7. 18' x 5' x 12' = 108 sq. ft.
8. 18' x 5' x 12' = 108 sq. ft.
9. 18' x 5' x 12' = 108 sq. ft.
10. 18' x 5' x 12' = 108 sq. ft.
11. 18' x 5' x 12' = 108 sq. ft.
12. 18' x 5' x 12' = 108 sq. ft.
13. 18' x 5' x 12' = 108 sq. ft.
14. 18' x 5' x 12' = 108 sq. ft.
15. 18' x 5' x 12' = 108 sq. ft.
16. 18' x 5' x 12' = 108 sq. ft.
17. 18' x 5' x 12' = 108 sq. ft.
18. 18' x 5' x 12' = 108 sq. ft.
19. 18' x 5' x 12' = 108 sq. ft.
20. 18' x 5' x 12' = 108 sq. ft.
21. 18' x 5' x 12' = 108 sq. ft.
22. 18' x 5' x 12' = 108 sq. ft.
23. 18' x 5' x 12' = 108 sq. ft.
24. 18' x 5' x 12' = 108 sq. ft.
25. 18' x 5' x 12' = 108 sq. ft.
26. 18' x 5' x 12' = 108 sq. ft.
27. 18' x 5' x 12' = 108 sq. ft.
28. 18' x 5' x 12' = 108 sq. ft.
29. 18' x 5' x 12' = 108 sq. ft.
30. 18' x 5' x 12' = 108 sq. ft.
31. 18' x 5' x 12' = 108 sq. ft.
32. 18' x 5' x 12' = 108 sq. ft.
33. 18' x 5' x 12' = 108 sq. ft.
34. 18' x 5' x 12' = 108 sq. ft.
35. 18' x 5' x 12' = 108 sq. ft.
36. 18' x 5' x 12' = 108 sq. ft.
37. 18' x 5' x 12' = 108 sq. ft.
38. 18' x 5' x 12' = 108 sq. ft.
39. 18' x 5' x 12' = 108 sq. ft.
40. 18' x 5' x 12' = 108 sq. ft.
41. 18' x 5' x 12' = 108 sq. ft.
42. 18' x 5' x 12' = 108 sq. ft.
43. 18' x 5' x 12' = 108 sq. ft.
44. 18' x 5' x 12' = 108 sq. ft.
45. 18' x 5' x 12' = 108 sq. ft.
46. 18' x 5' x 12' = 108 sq. ft.
47. 18' x 5' x 12' = 108 sq. ft.
48. 18' x 5' x 12' = 108 sq. ft.
49. 18' x 5' x 12' = 108 sq. ft.
50. 18' x 5' x 12' = 108 sq. ft.
51. 18' x 5' x 12' = 108 sq. ft.
52. 18' x 5' x 12' = 108 sq. ft.
53. 18' x 5' x 12' = 108 sq. ft.
54. 18' x 5' x 12' = 108 sq. ft.
55. 18' x 5' x 12' = 108 sq. ft.
56. 18' x 5' x 12' = 108 sq. ft.
57. 18' x 5' x 12' = 108 sq. ft.
58. 18' x 5' x 12' = 108 sq. ft.
59. 18' x 5' x 12' = 108 sq. ft.
60. 18' x 5' x 12' = 108 sq. ft.
61. 18' x 5' x 12' = 108 sq. ft.
62. 18' x 5' x 12' = 108 sq. ft.
63. 18' x 5' x 12' = 108 sq. ft.
64. 18' x 5' x 12' = 108 sq. ft.
65. 18' x 5' x 12' = 108 sq. ft.
66. 18' x 5' x 12' = 108 sq. ft.
67. 18' x 5' x 12' = 108 sq. ft.
68. 18' x 5' x 12' = 108 sq. ft.
69. 18' x 5' x 12' = 108 sq. ft.
70. 18' x 5' x 12' = 108 sq. ft.
71. 18' x 5' x 12' = 108 sq. ft.
72. 18' x 5' x 12' = 108 sq. ft.
73. 18' x 5' x 12' = 108 sq. ft.
74. 18' x 5' x 12' = 108 sq. ft.
75. 18' x 5' x 12' = 108 sq. ft.
76. 18' x 5' x 12' = 108 sq. ft.
77. 18' x 5' x 12' = 108 sq. ft.
78. 18' x 5' x 12' = 108 sq. ft.
79. 18' x 5' x 12' = 108 sq. ft.
80. 18' x 5' x 12' = 108 sq. ft.

**Heritage Tree Legend**

- - Oak Tree (Size as noted)
- - Shreveport Tree (Size as noted)
- - Hickory Tree (Size as noted)

**Notes:**

1. 18' wide dense vegetative buffer shall be provided along the western property line where the development abuts S.W. 24th Avenue. In addition, a 15' wide low density buffer shall be provided along portions of the western property line. These buffers will be part of the landscaped common area of the development. All buffers will comply with applicable sections of the D.C.
2. The fence is not a substitute for the buffer. A fence would be in addition to the buffers within common area and would not necessarily be a fence that would limit access.
3. Common Open Space shall be provided within the common area of the development. The common open space shall be provided in the form of a series of landscaped common areas, including but not limited to, lawns, walkways, and other amenities. The common open space shall be provided in accordance with the requirements of the D.C.
4. The common open space shall be provided in accordance with the requirements of the D.C.
5. The common open space shall be provided in accordance with the requirements of the D.C.
6. The common open space shall be provided in accordance with the requirements of the D.C.
7. The common open space shall be provided in accordance with the requirements of the D.C.
8. The common open space shall be provided in accordance with the requirements of the D.C.
9. The common open space shall be provided in accordance with the requirements of the D.C.
10. The common open space shall be provided in accordance with the requirements of the D.C.

**Stormwater Management Facility #2**

1. The stormwater management facility shall be provided in accordance with the requirements of the D.C.

2. The stormwater management facility shall be provided in accordance with the requirements of the D.C.

3. The stormwater management facility shall be provided in accordance with the requirements of the D.C.

4. The stormwater management facility shall be provided in accordance with the requirements of the D.C.

5. The stormwater management facility shall be provided in accordance with the requirements of the D.C.

6. The stormwater management facility shall be provided in accordance with the requirements of the D.C.

7. The stormwater management facility shall be provided in accordance with the requirements of the D.C.

8. The stormwater management facility shall be provided in accordance with the requirements of the D.C.

9. The stormwater management facility shall be provided in accordance with the requirements of the D.C.

10. The stormwater management facility shall be provided in accordance with the requirements of the D.C.

**NOTE: COMMON OPEN SPACE AS REFERENCED ON THIS PLAN MEETS THE REQUIREMENTS OF SECTION 10.04 OF THE D.C. COMMON AREAS DEVELOPMENT MANAGEMENT ORDINANCE AND SHALL BE PROVIDED AS COMMON OPEN SPACE.**

(Above Applies to DUD)

ORIGINAL