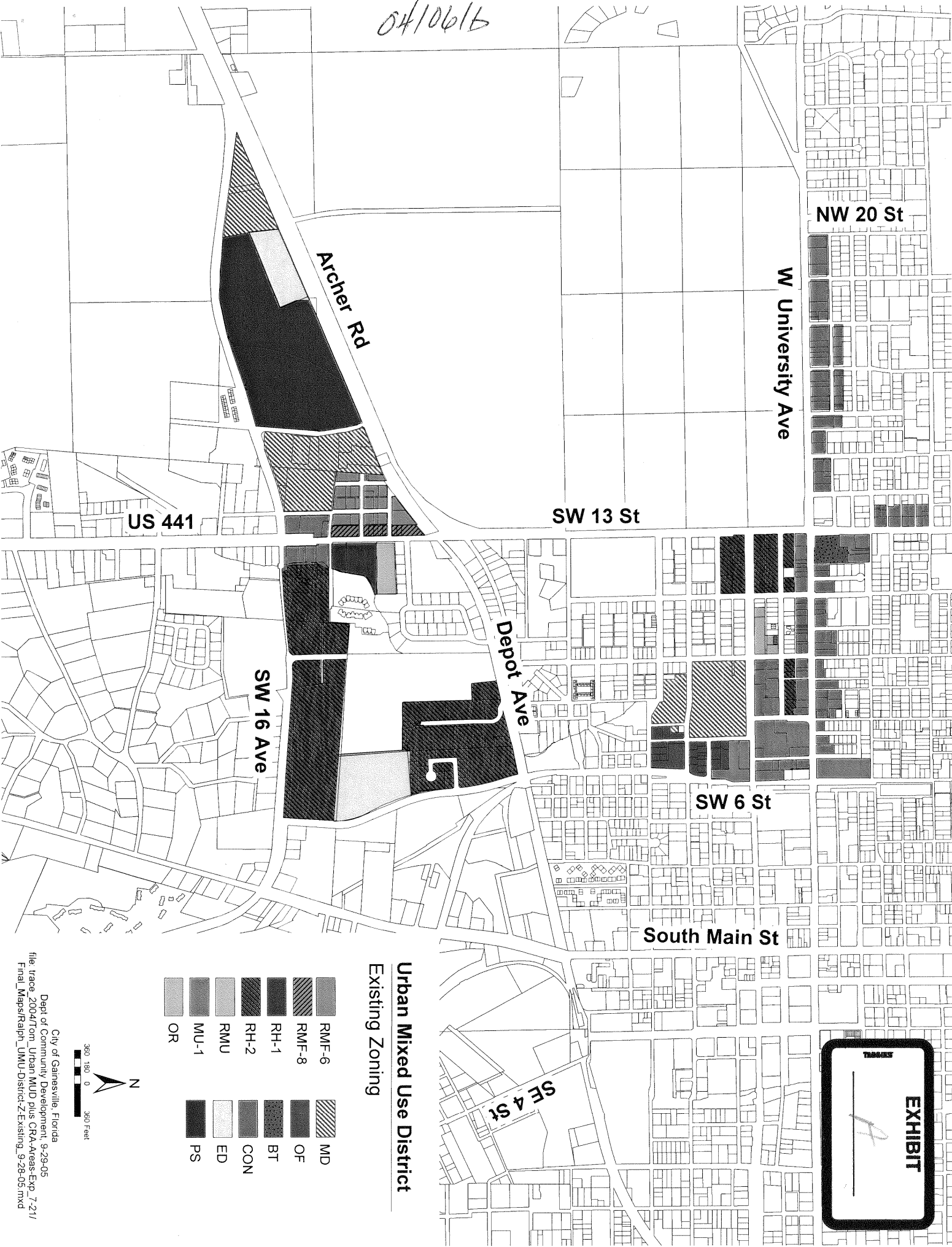


04/06/16



NW 20 St

W University Ave

US 441

SW 13 St

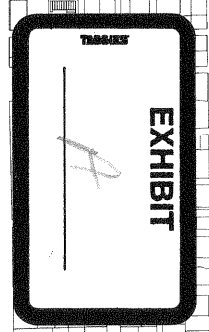
SW 16 Ave

Depot Ave

SW 6 St

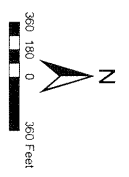
South Main St

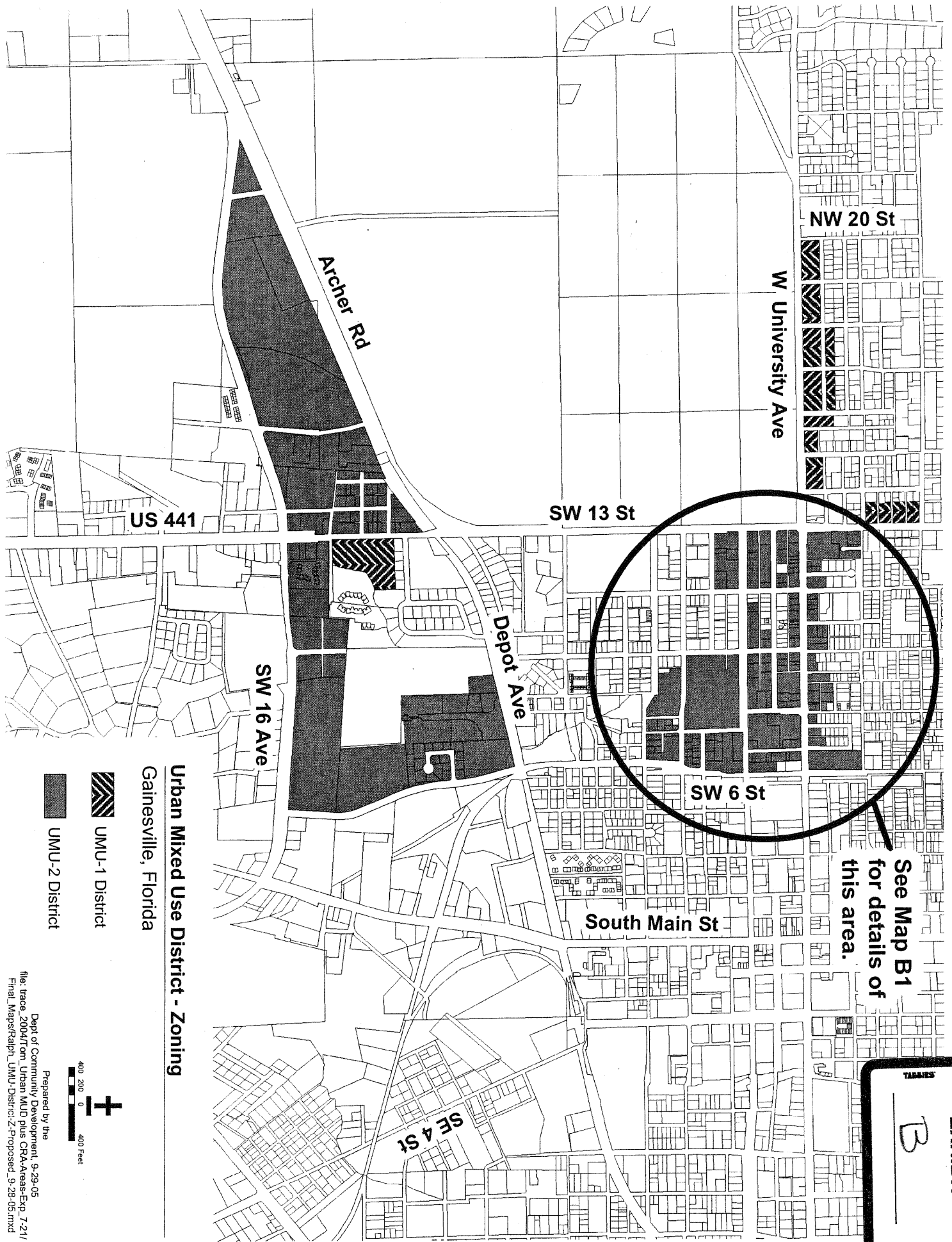
SE 4 St



Urban Mixed Use District
Existing Zoning

	RMF-6		MD
	RMF-8		OF
	RH-1		BT
	RH-2		CON
	RMU		ED
	MU-1		PS
	OR		







See Map B1
for details of
this area.

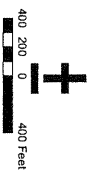
TABLES

EXHIBIT

B

Urban Mixed Use District - Zoning
Gainesville, Florida

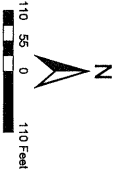
-  **UMU-1 District**
-  **UMU-2 District**



Prepared by the
Dept. of Community Development, 9-29-05
file: trace_2004/Urban MUD plus CRA Areas-Exp 7-21/
Final_Maps/Ralph_UMU-District-Z-Proposed_9-29-05.mxd

Urban Mixed Use District - Zoning
Partial UMU-2 District Inset

Prepared by the
 Dept of Community Development, 072005
 file: trace_2004/Tran_Urban_MUD_plusCRA-Areas-Exp_7-21/
 Final Maps/Ralph_UMU_District-ZoneArea_Inset_9-7-05



Partial UMU-2 District

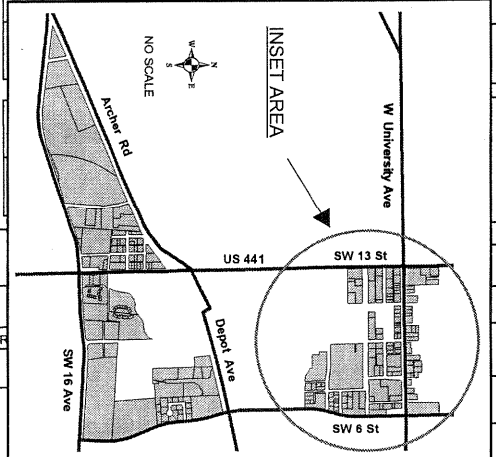
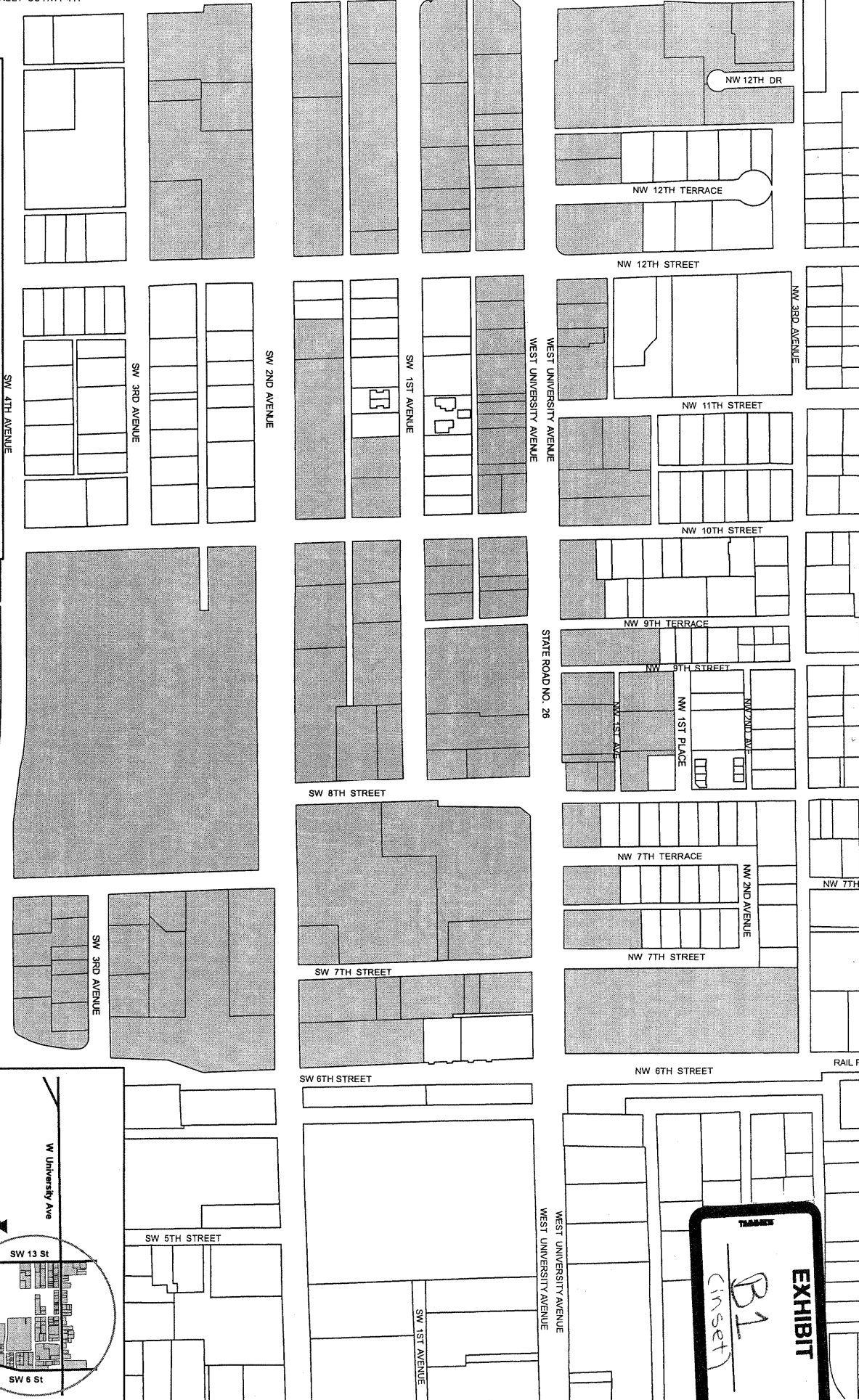


EXHIBIT
 B1
 (inset)