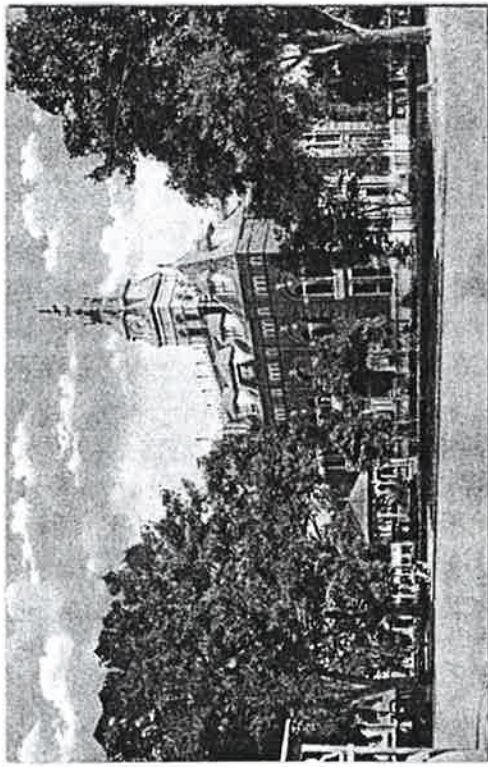


Site Master Plan Presentation



--000143

ALACHUA COUNTY COURTHOUSE
G A I N E S V I L L E , F L O R I D A

To develop a functional courthouse complex and create a successful piece of civic architecture that will enrich Downtown Gainesville and Alachua County for years to come, we hereby respectfully request that we:

- Obtain approval to create a contiguous 4 block site for Phase I by closing all applicable streets.
- Obtain an understanding with the City of Gainesville that Phase I construction may not fully meet codes regarding street edges and building set-backs.
- Obtain a commitment from the City of Gainesville to help with required parking issues and the donation of the existing city parking lot at the north-east corner of the site.

ALACHUA COUNTY COURTHOUSE

G A I N E S V I L L E , F L O R I D A

OUTLINE

- Courthouse Planning Requirements
- Site Information
- Site Deployment Options

ALACHUA COUNTY COURTHOUSE

G A I N E S V I L L E , F L O R I D A

SITE DESIGN OBJECTIVES

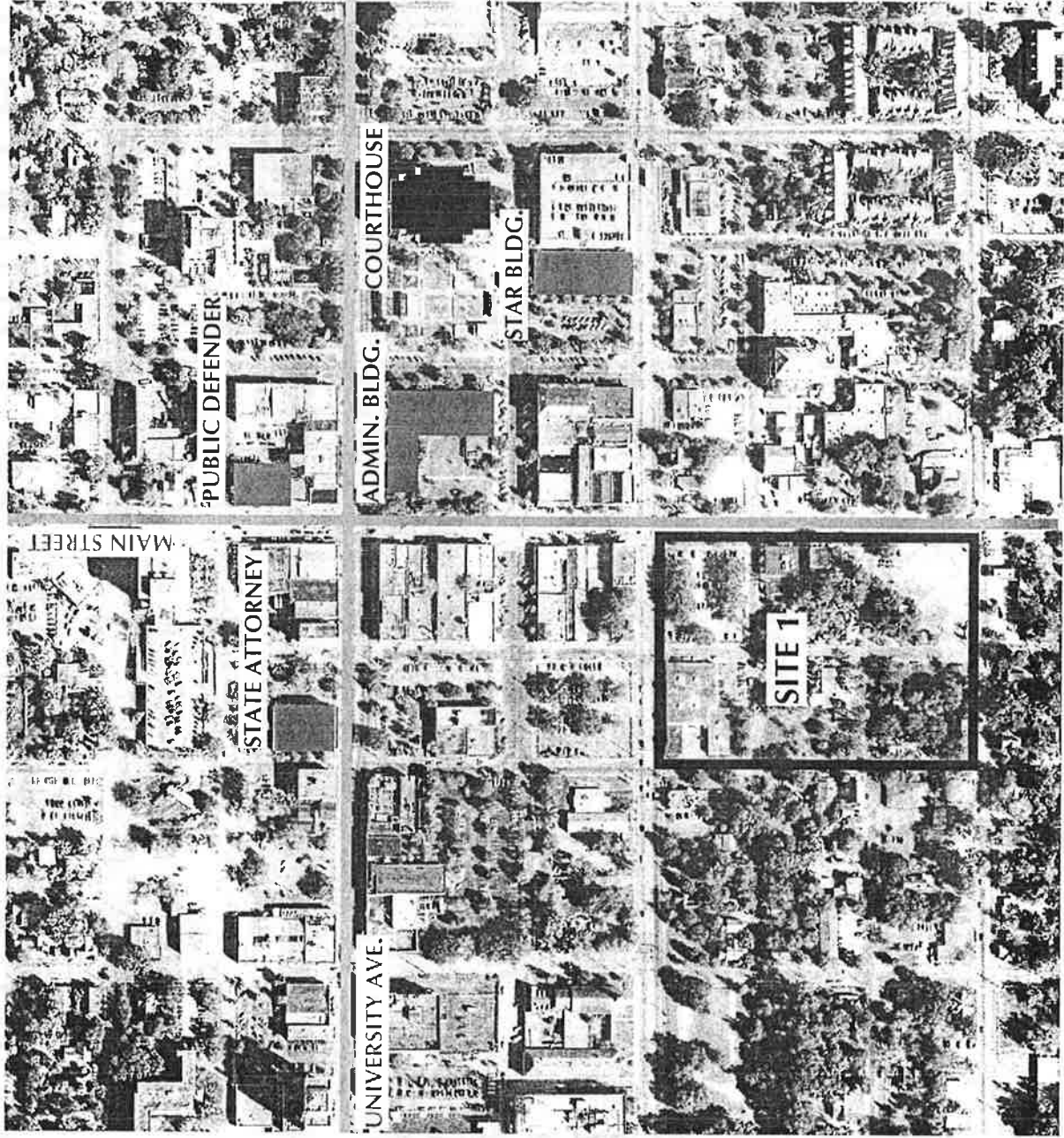
1. Secure a Sufficient Amount of Contiguous Property to Allow the County to Construct a Criminal Courthouse and Land Bank the Balance of the Property for Future Growth of 50 Years.
2. Provide a First Phase Building Footprint to Meet the Court's Program and Operational Needs in the Most Efficient Design Possible Within the Budget and Schedule Set by the County Commissioners.
3. Position the Initial Building on the Site to Accommodate Future Phases and to Create a Cohesive Courthouse Complex That Will Serve the Citizens of Alachua County.
4. Provide the Maximum Site Security for the Courts, Users, and the Citizens Through the Control of the Site Perimeter.
5. Develop Parking Areas and Points of Access Into the Initial Building Which Addresses the Security Requirements of Both the First Phase and the Future Phases.
 - A. Public
 - B. Judicial
 - C. Secure
 - D. Service
6. Provide a Reasonable Amount of Dedicated Public Parking With Good Access to the Courthouse Entrance.
7. To design a courthouse that is responsive to the environmental needs of the community; a relevant example of Sustainable Design.
8. Develop a Partnership With the City of Gainesville to Support the Design and Construction of This Courthouse.

MASTER PLAN SITE PROGRAM

PHASE	FUNCTION	BUILDING AREA	BUILDING FOOTPRINT
PHASE I – 2005	COURTHOUSE ANNEX ¹	100,000 BGSF	26,000 SF
	SECURE PARKING(12 SPACES)	-	4,800 SF
	PARKING (400 CARS)	140,000 BGSF	28,000 SF
PHASE II – 2010	COURTHOUSE RELOCATION ⁴	100,000 BGSF	25,000 SF
	SECURE PARKING (12 SPACES)	-	4,800 SF
	PARKING GARAGE (400 CARS) ²³	140,000 BGSF	28,000 SF
PHASE III – 2015	COURTS SERVICES BUILDING	80,000 BGSF	16,000 SF
	*SERVICES	*20,000 BGSF	
	*STATE'S ATTORNEY	*40,000 BGSF	
	*PUBLIC DEFENDER	*20,000 BGSF	
	PARKING GARAGE(350 CARS) ²³		
PHASE IV	COURTHOUSE EXPANSION	80,000 BGSF	20,000 SF
	SECURE PARKING(10 SPACES)	-	4,000 SF
	PARKING (350 CARS) ²³	OFF-SITE	-
TOTAL SITE COVERAGE			157,400 SF

ALACHUA COUNTY COURTHOUSE

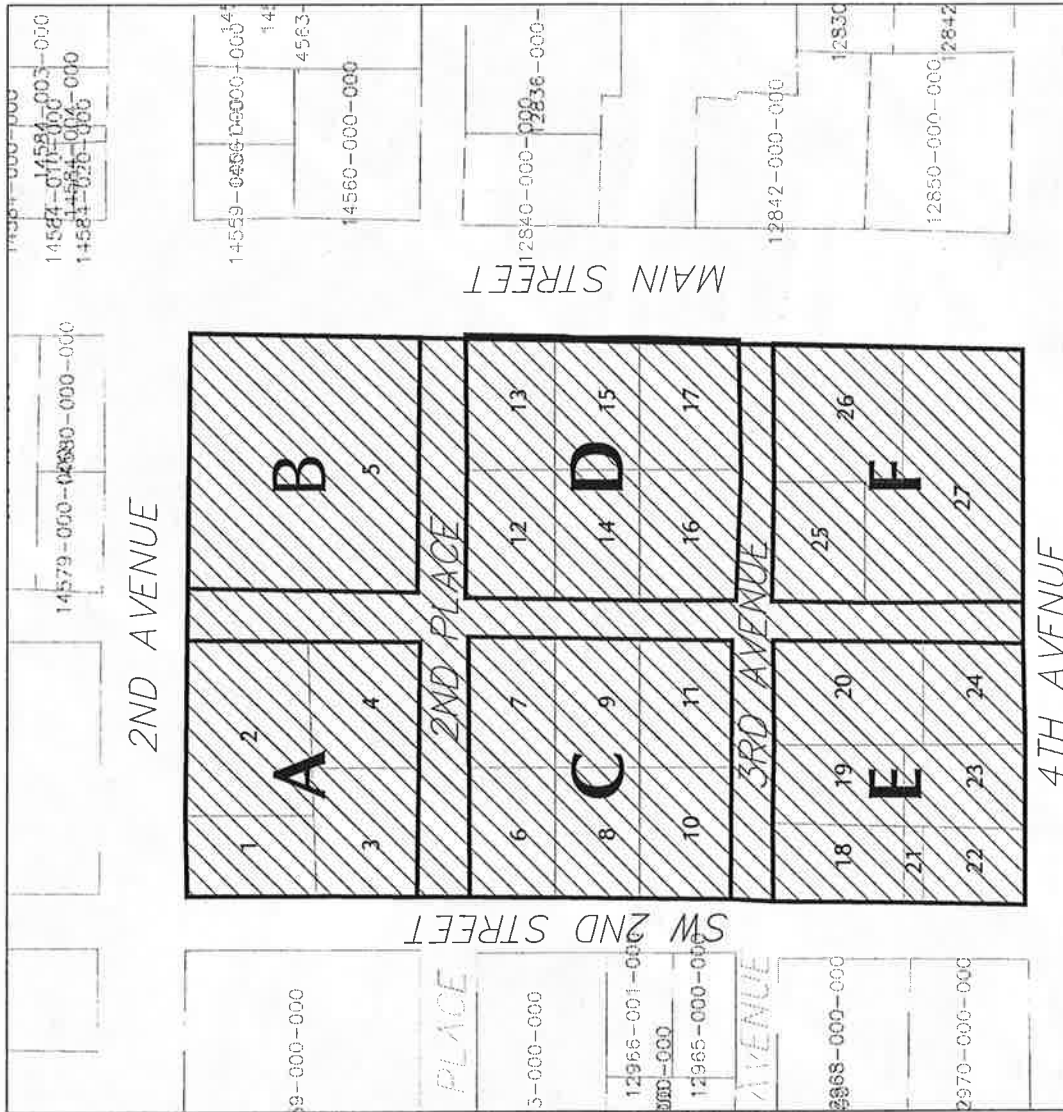
G A I N E S V I L L E, F L O R I D A



ALACHUA COUNTY COURTHOUSE

G A I N E S V I L L E , F L O R I D A

SITE AREA 1



BLOCK A	PARCEL SF
PARCEL 1	6,324 SF
PARCEL 2	12,276 SF
PARCEL 3	8,000 SF
PARCEL 4	8,000 SF
TOTAL	++ 34,890 SF

BLOCK B	PARCEL SF
PARCEL 5	34,670 SF
TOTAL	++ 34,670 SF

BLOCK C	PARCEL SF
PARCEL 6	6,660 SF
PARCEL 7	6,660 SF
PARCEL 8	6,660 SF
PARCEL 9	6,660 SF
PARCEL 10	6,660 SF
PARCEL 11	6,660 SF
TOTAL	++ 40,500 SF

BLOCK D	PARCEL SF
PARCEL 12	6,660 SF
PARCEL 13	6,660 SF
PARCEL 14	6,660 SF
PARCEL 15	6,660 SF
PARCEL 16	6,660 SF
PARCEL 17	6,660 SF
TOTAL	++ 42,750 SF

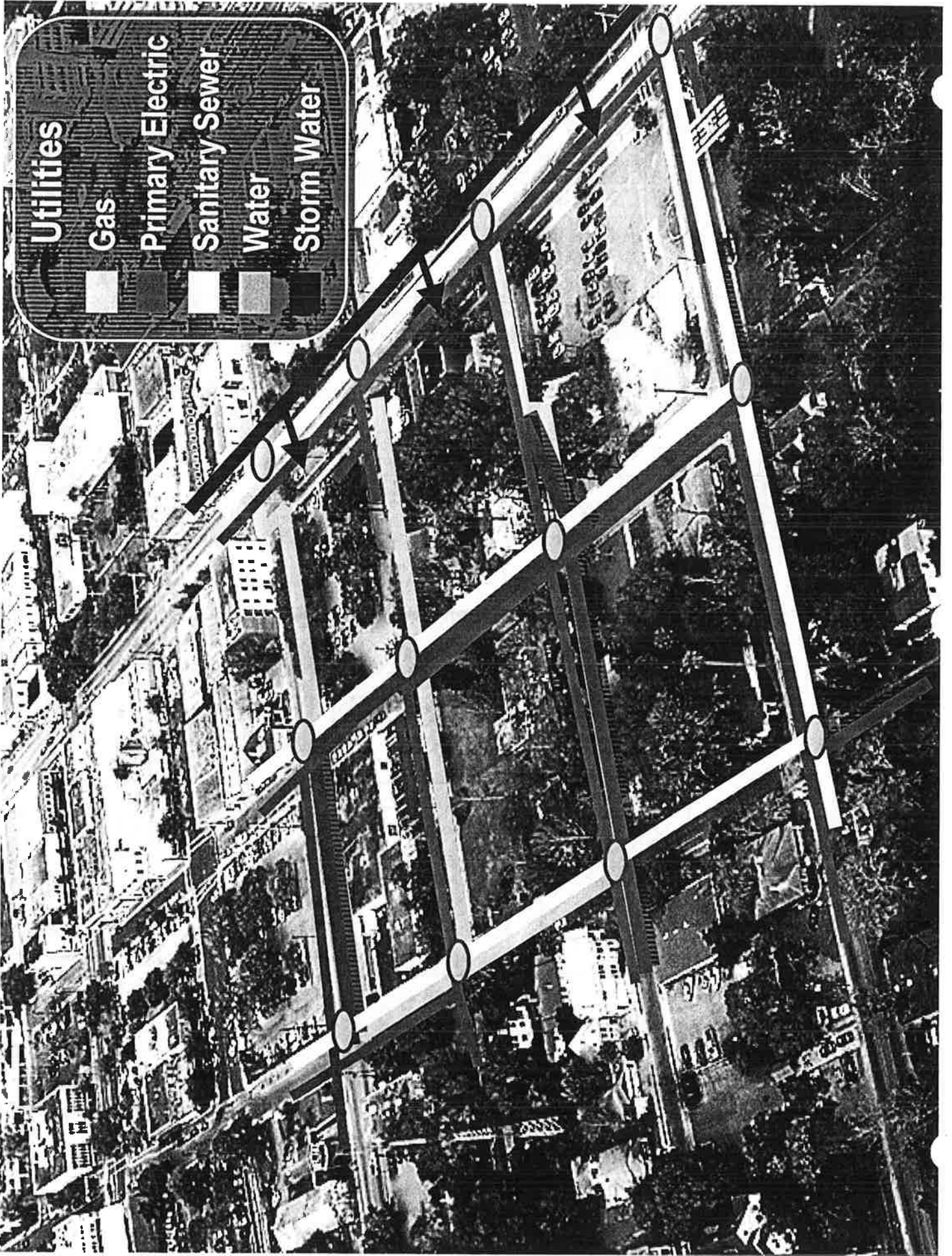
BLOCK E	PARCEL SF
PARCEL 18	6,600 SF
PARCEL 19	6,600 SF
PARCEL 20	9,600 SF
PARCEL 21	900 SF
PARCEL 22	4,450 SF
PARCEL 23	5,250 SF
PARCEL 24	5,625 SF
TOTAL	++ 39,050 SF

BLOCK F	PARCEL SF
PARCEL 25	6,440 SF
PARCEL 26	10,692 SF
PARCEL 27	20,000 SF
TOTAL	++ 38,080 SF

TOTAL (BLOCK A, B, C, D, E, F)	++ 229,940 SF
TOTAL (-BLOCK A, B, C, D, E, F -STREETS)	++ 276,732 SF

ALACHUA COUNTY COURTHOUSE

G A I N E S V I L L E , F L O R I D A



Utilities

Gas

Primary Electric

Sanitary Sewer

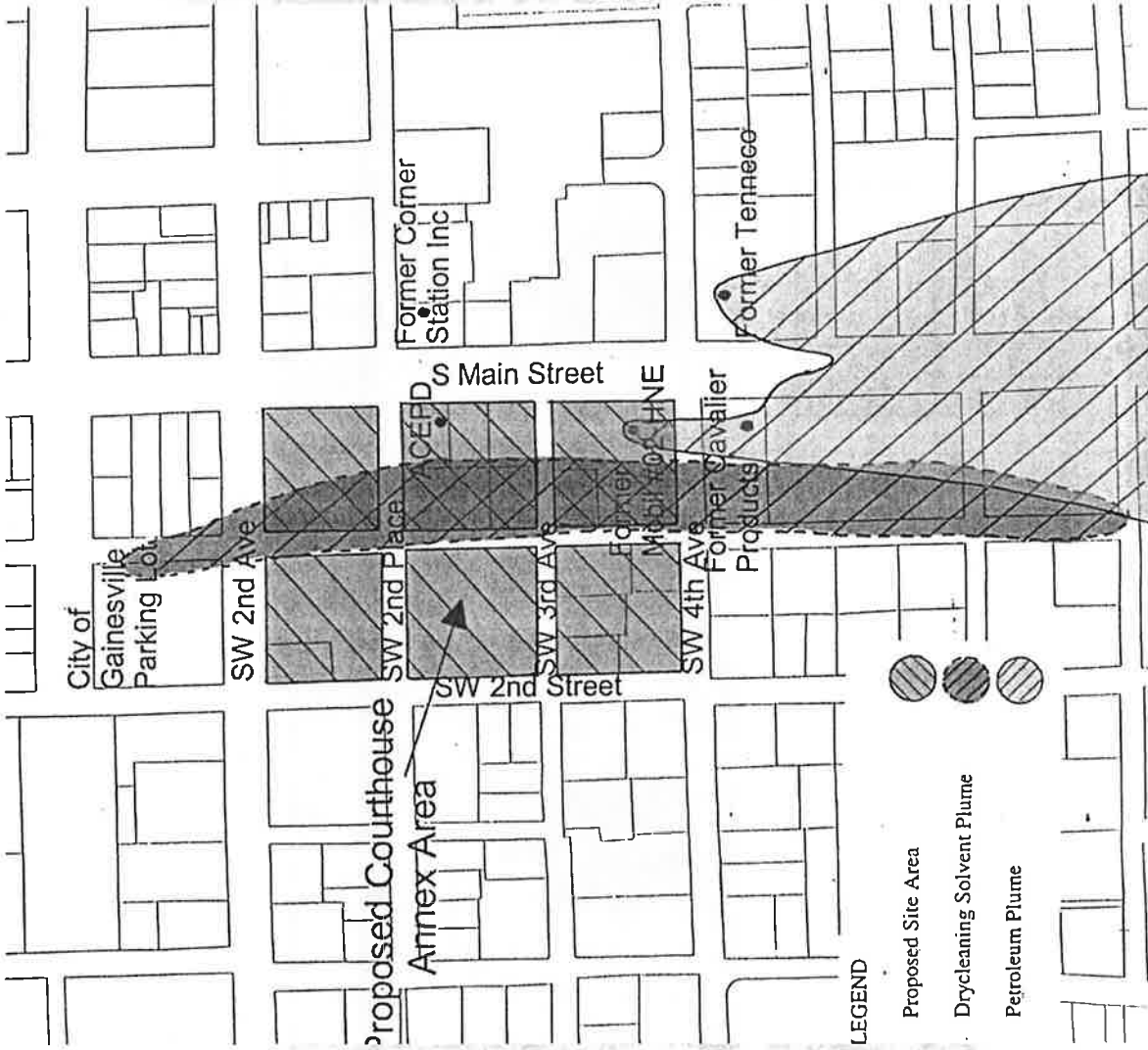
Water

Storm Water

CANTON ST

W. 10TH ST

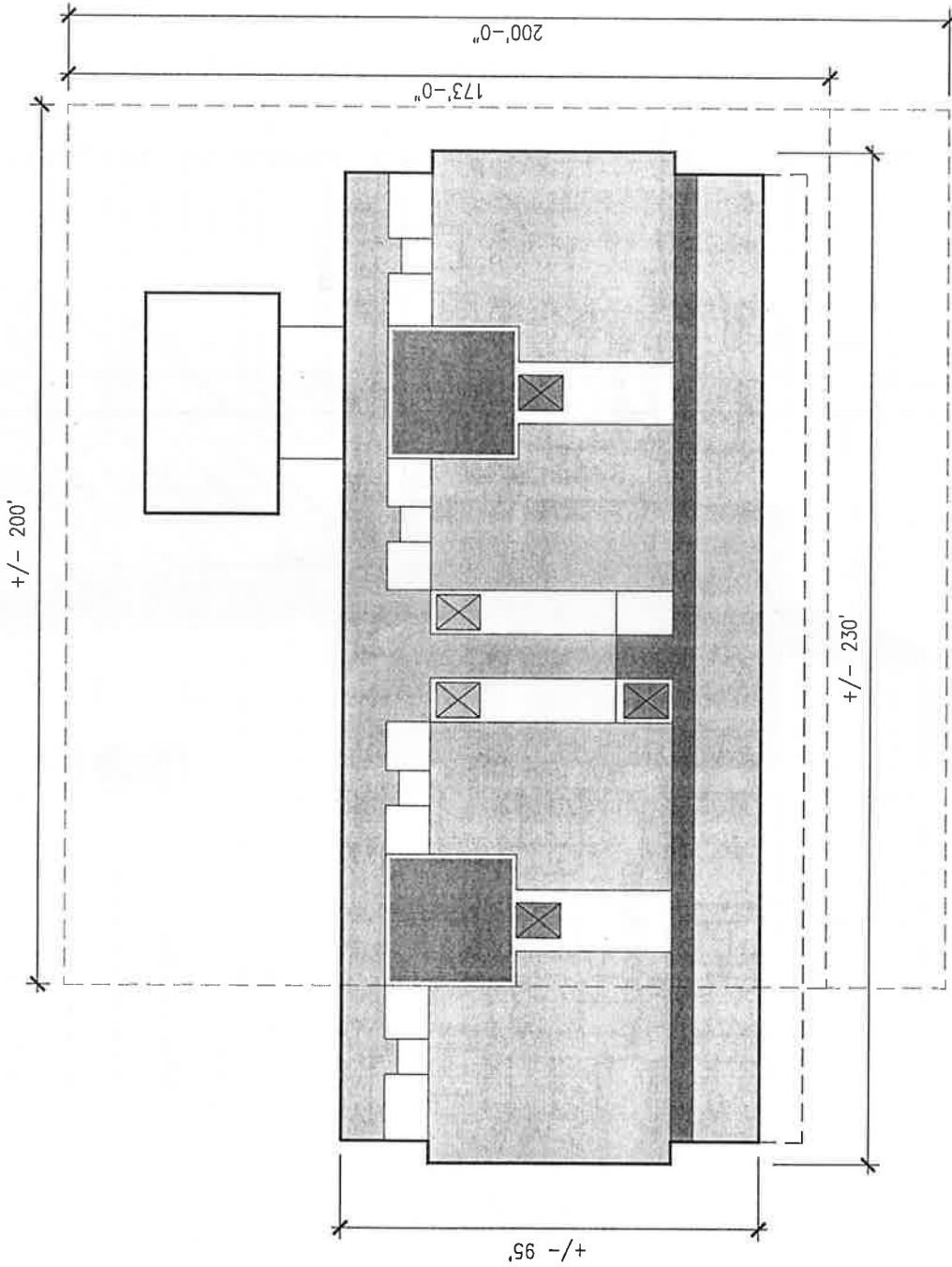
SITE 1 - ENVIRONMENTAL



ALACHUA COUNTY COURTHOUSE

G A I N E S V I L L E , F L O R I D A

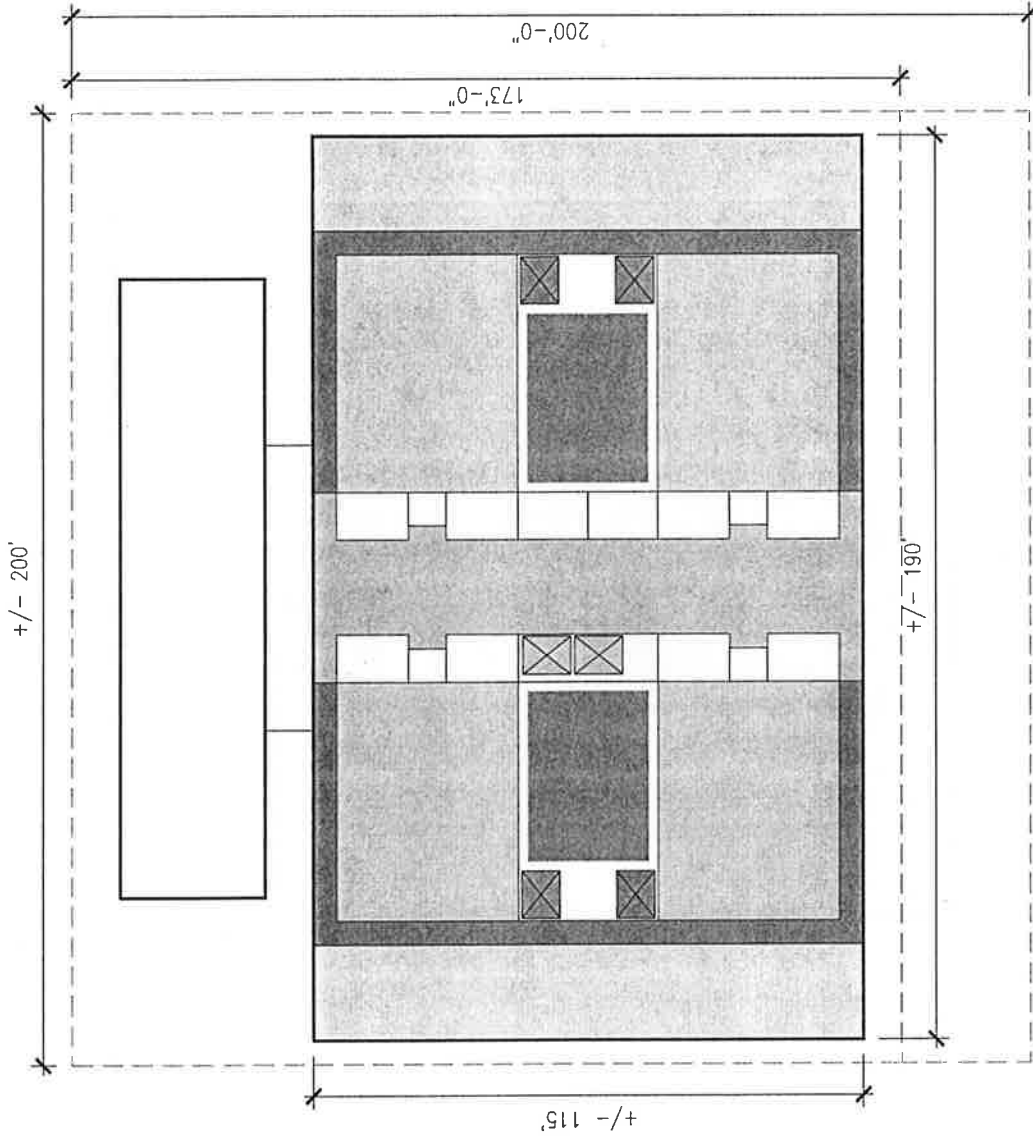
TYPICAL COURT FLOOR PLANS



ALACHUA COUNTY COURTHOUSE

G A I N E S V I L L E , F L O R I D A

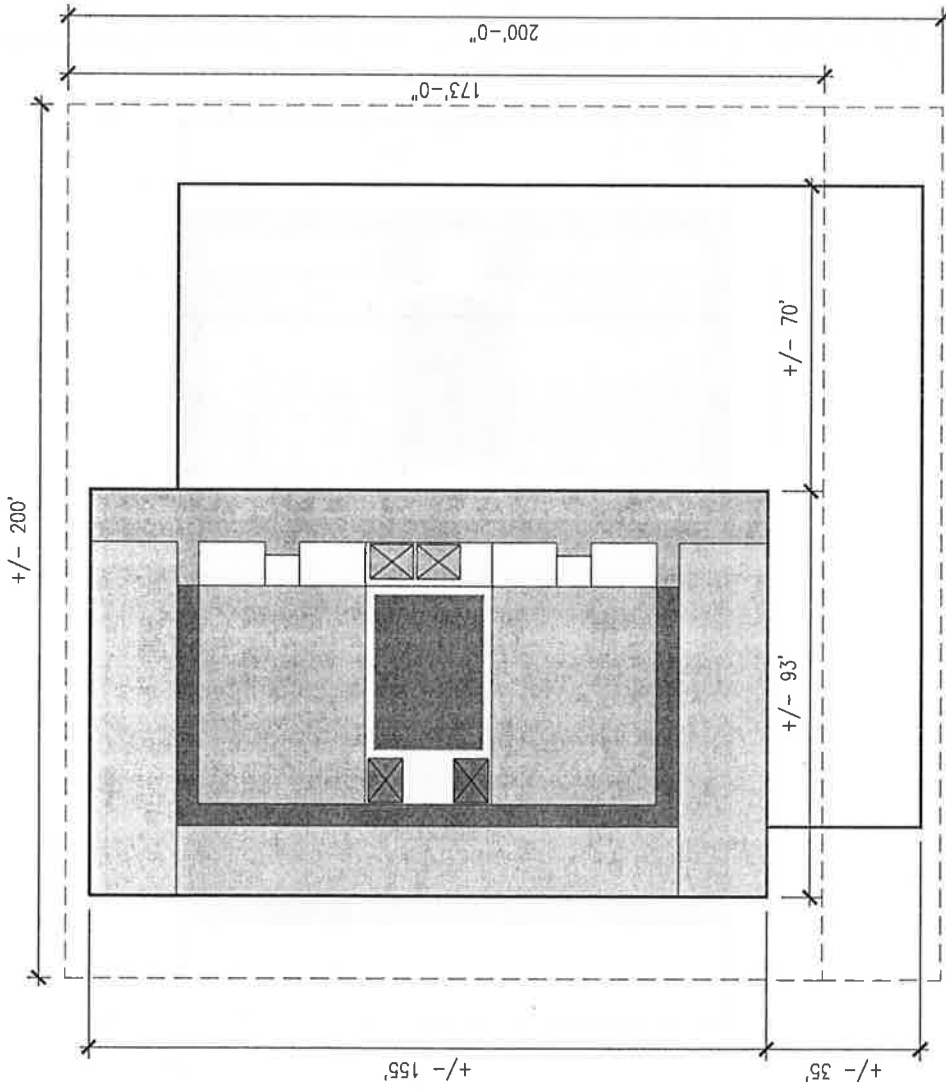
TYPICAL COURT FLOOR PLANS



ALACHUA COUNTY COURTHOUSE

G A I N E S V I L L E , F L O R I D A

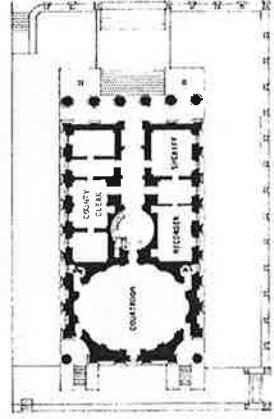
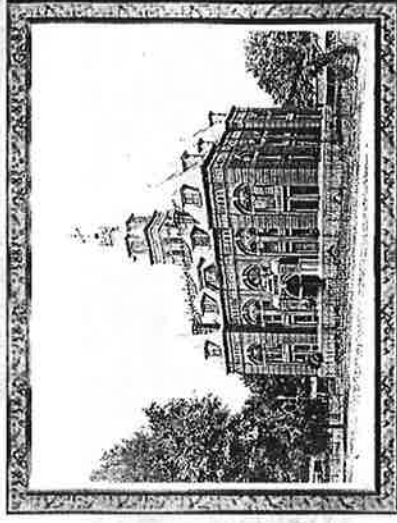
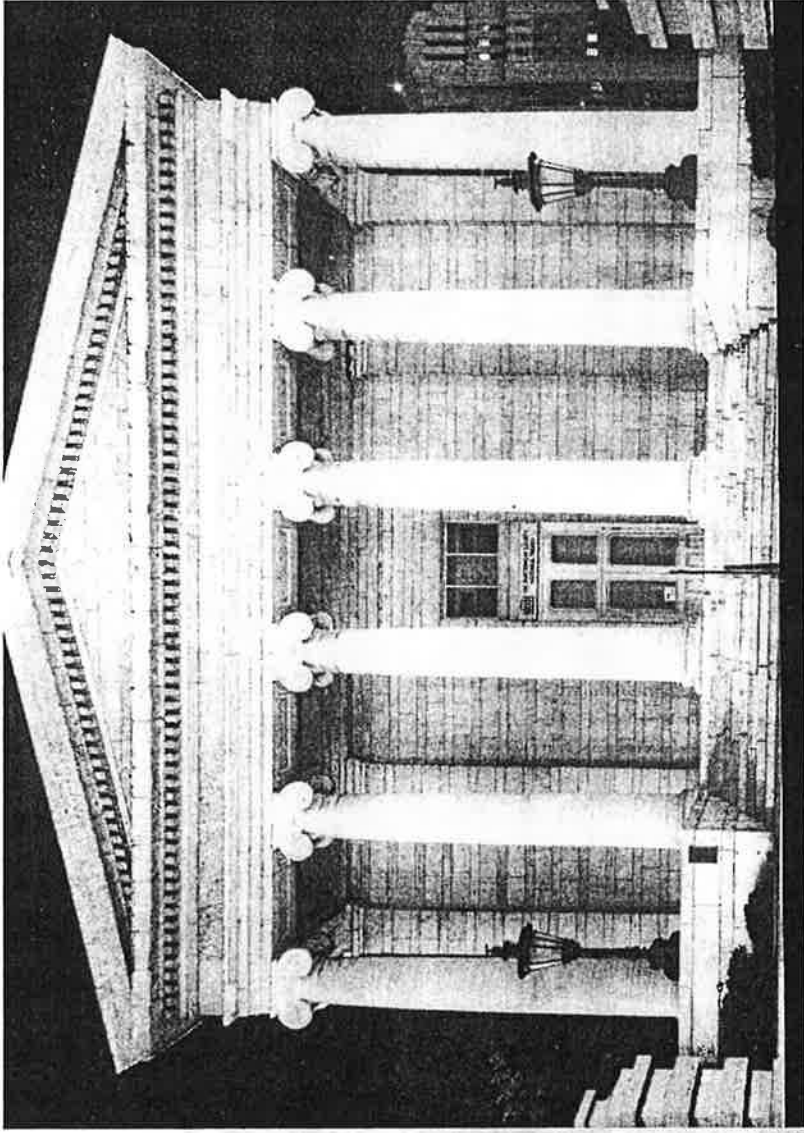
TYPICAL COURT FLOOR PLANS



ALACHUA COUNTY COURTHOUSE

G A I N E S V I L L E , F L O R I D A

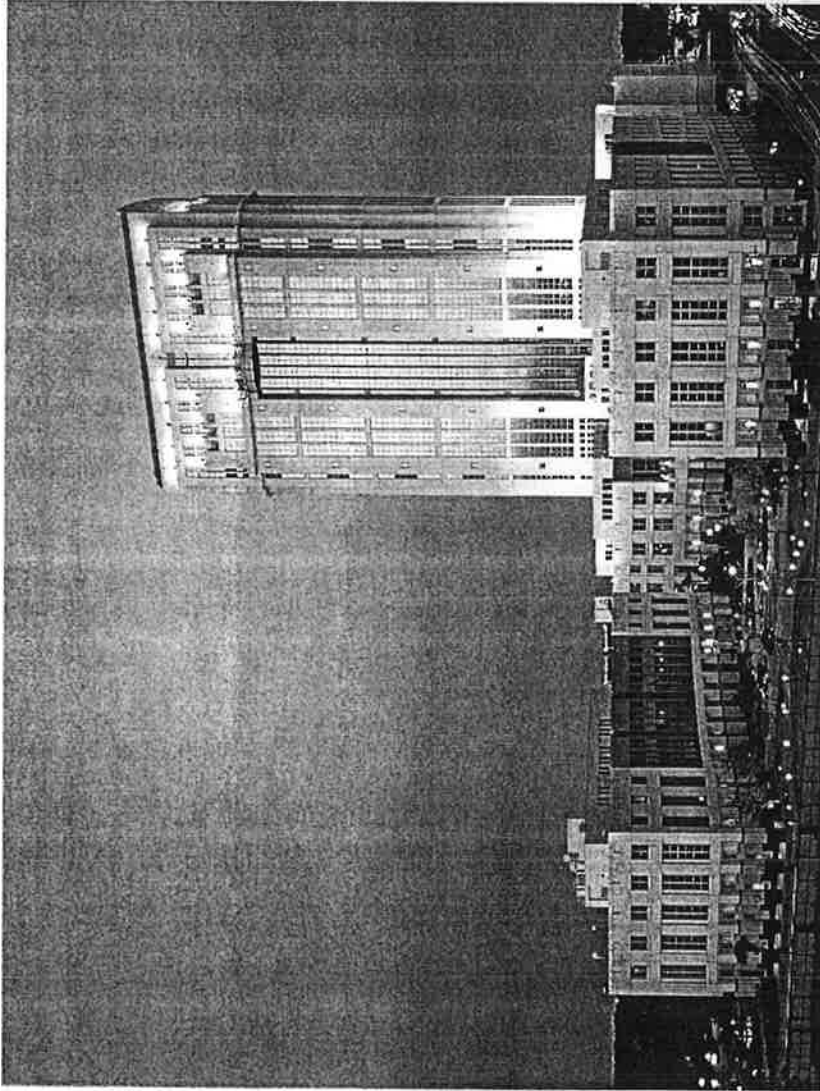
A COURTHOUSE ON A GREEN



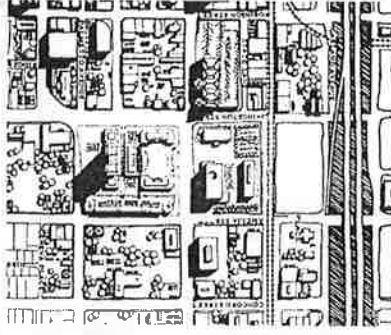
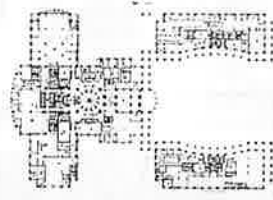
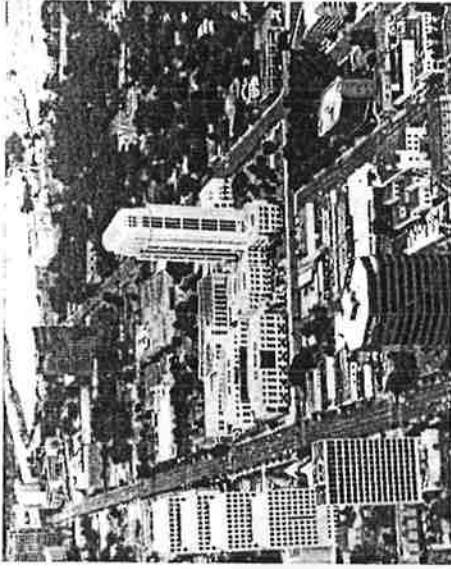
ALACHUA COUNTY COURTHOUSE

G A I N E S V I L L E , F L O R I D A

SIMILAR EXAMPLES



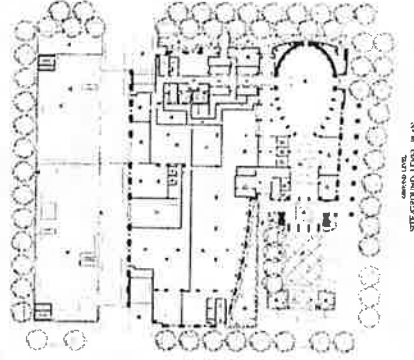
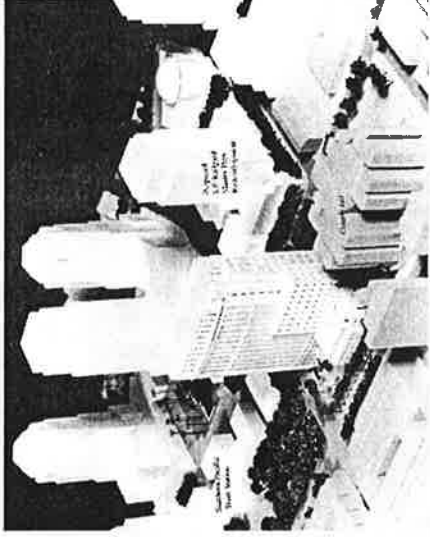
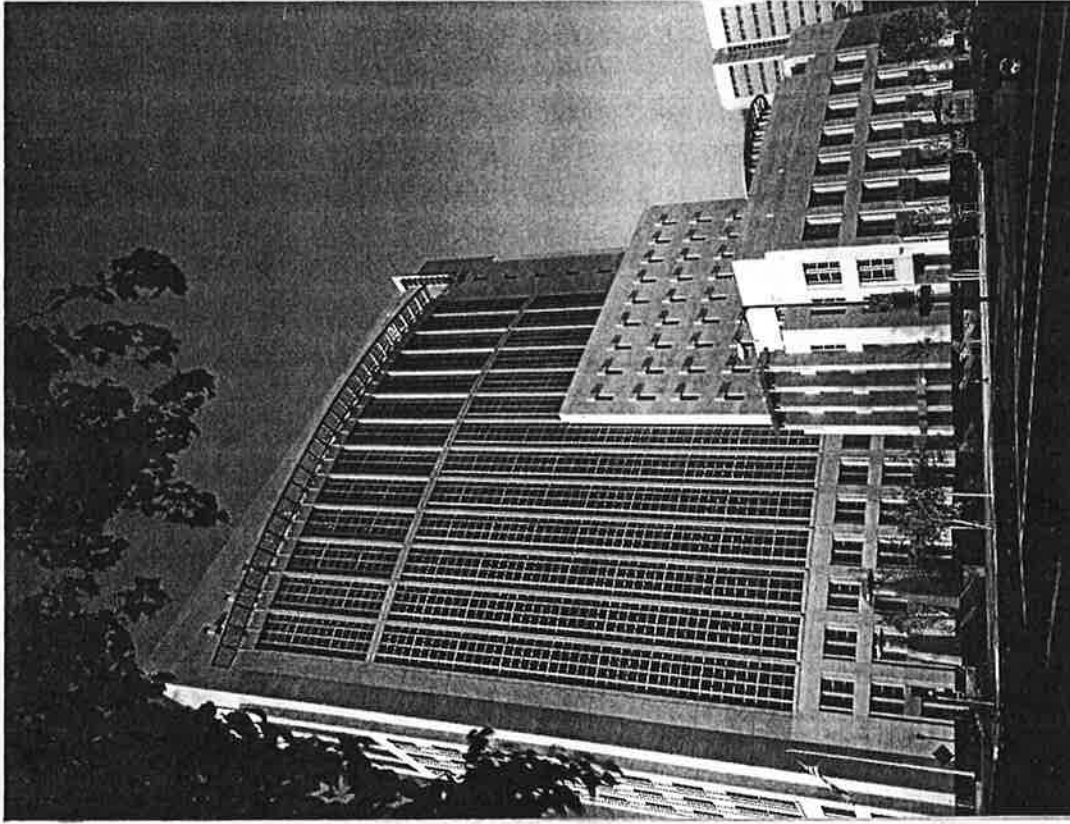
ORANGE COUNTY COURTHOUSE, ORLANDO, FL



ALACHUA COUNTY COURTHOUSE

G A I N E S V I L L E , F L O R I D A

SIMILAR EXAMPLES

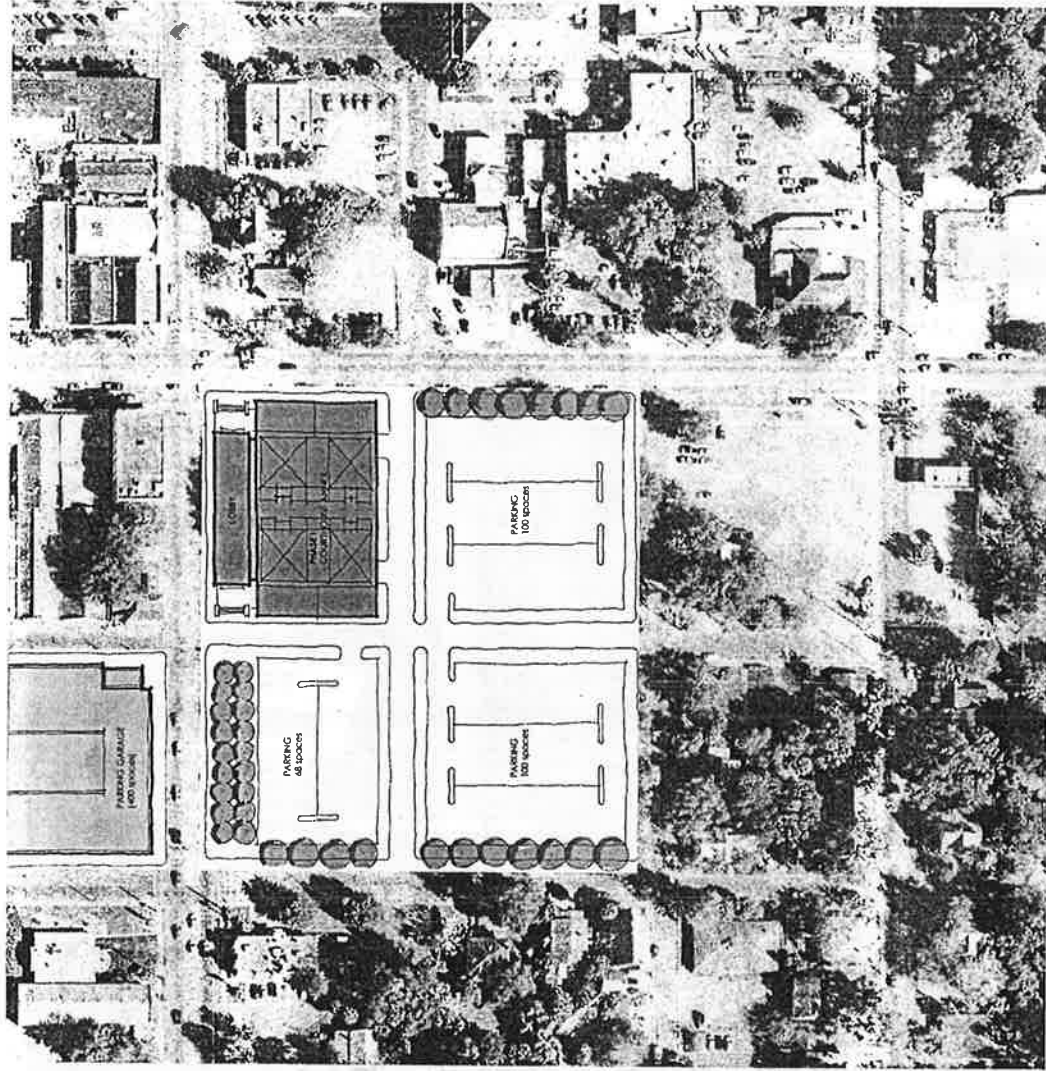


SACRAMENTO FEDERAL COURTHOUSE

ALACHUA COUNTY COURTHOUSE

G A I N E S V I L L E , F L O R I D A

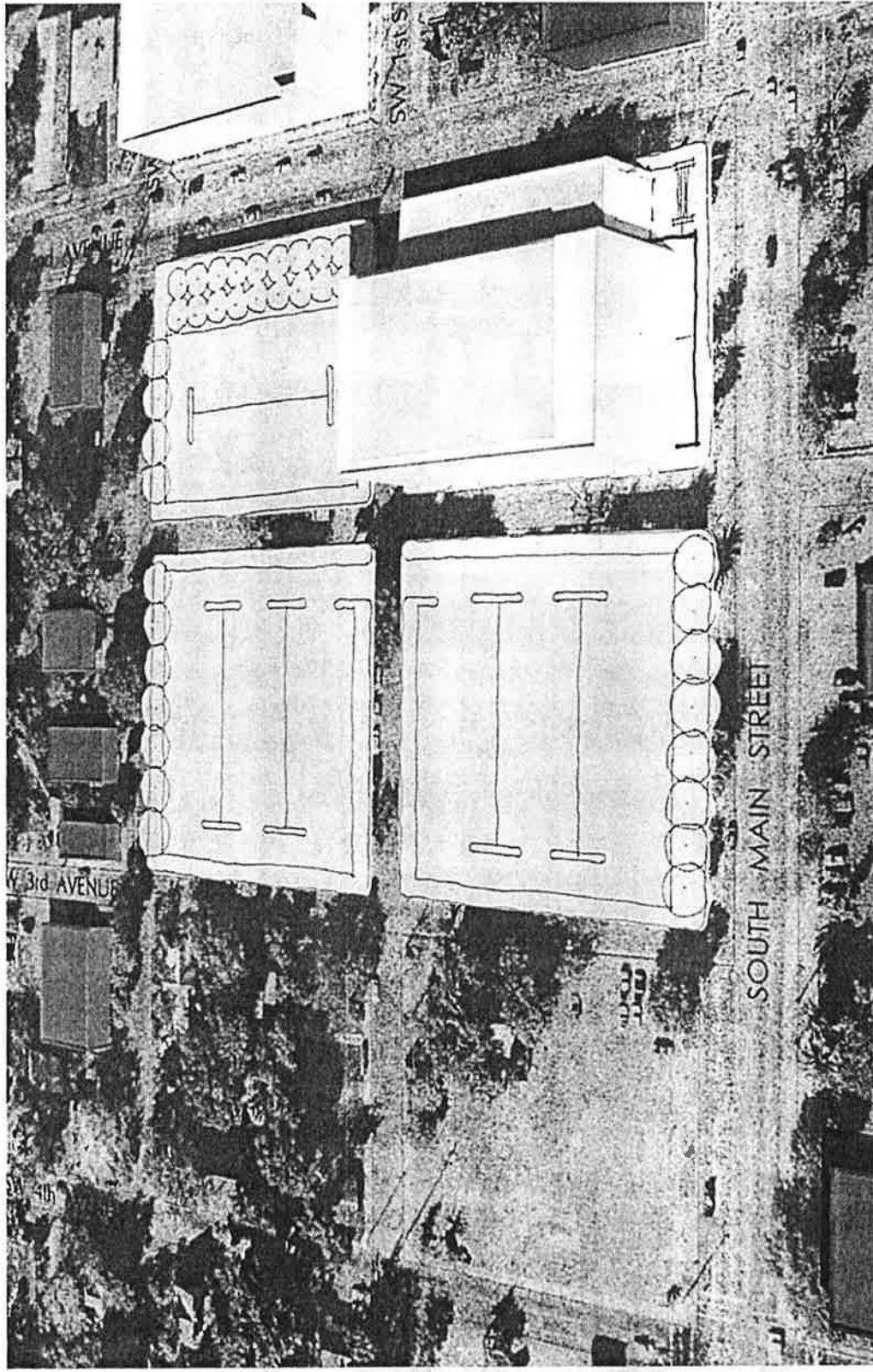
SITE 1 - OPTION A - PHASE I



ALACHUA COUNTY COURTHOUSE

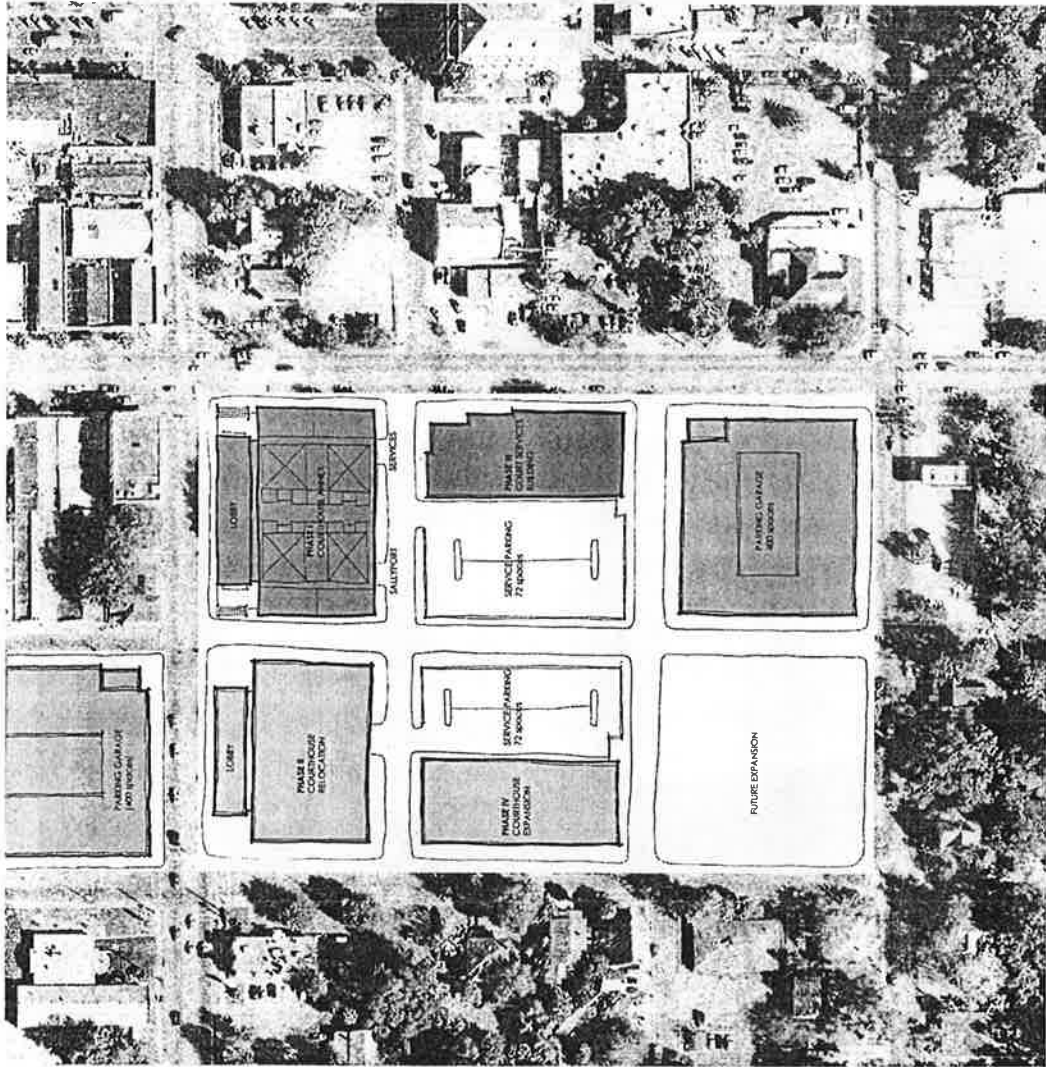
G A I N E S V I L L E , F L O R I D A

SITE 1 – OPTION A – PHASE I



ALACHUA COUNTY COURTHOUSE
G A I N E S V I L L E , F L O R I D A

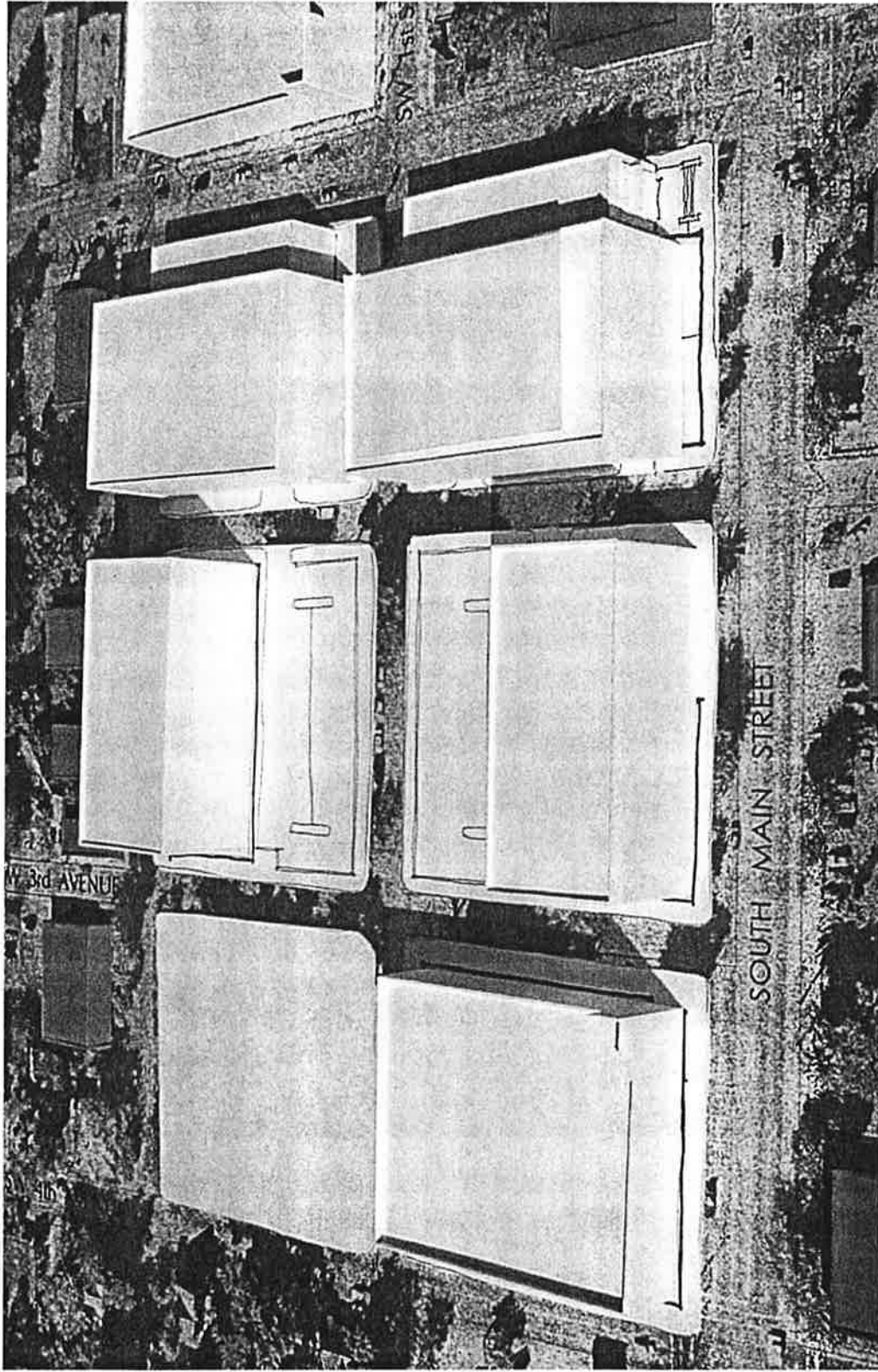
SITE 1 - OPTION A - FULL BUILD-OUT



ALACHUA COUNTY COURTHOUSE

G A I N E S V I L L E , F L O R I D A

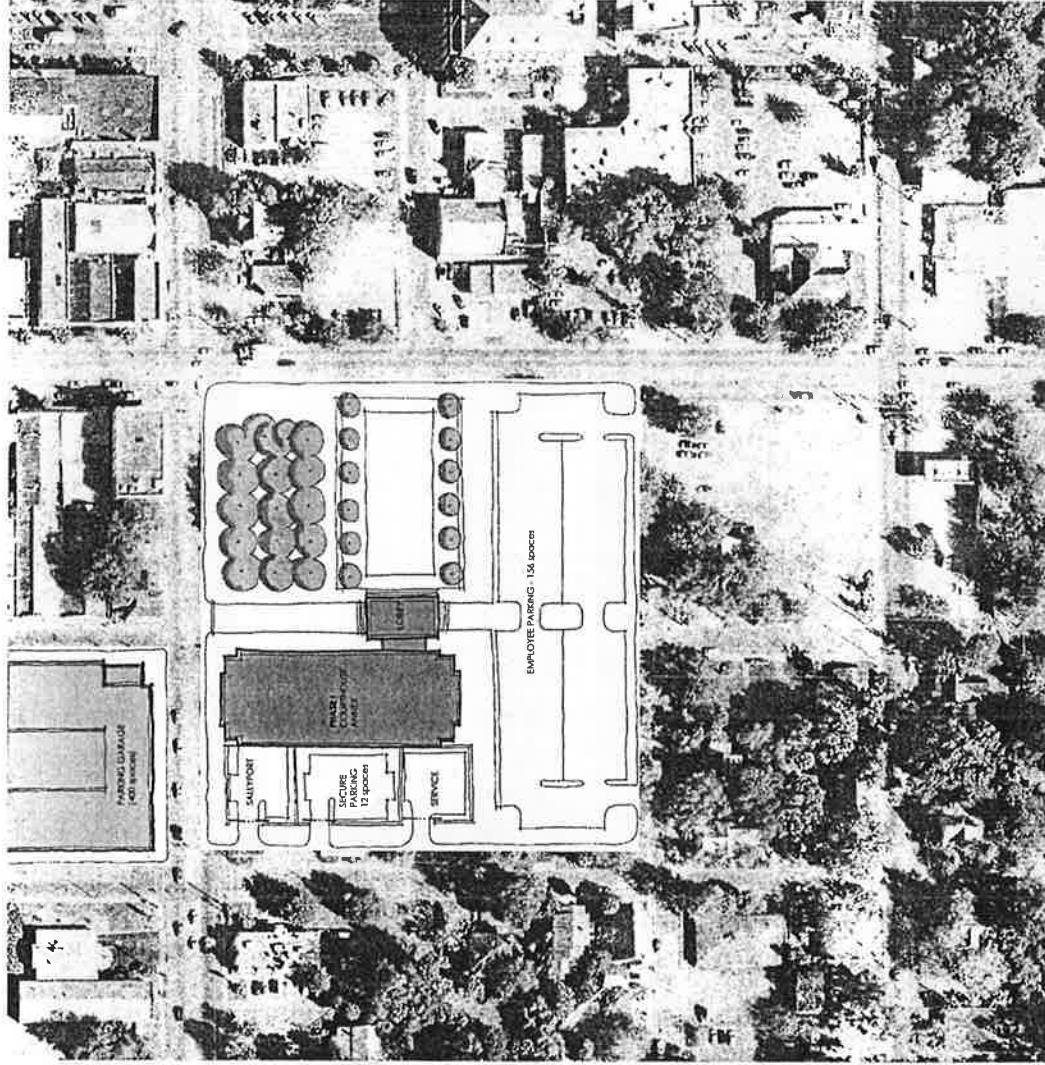
SITE 1 – OPTION A – FULL BUILD-OUT



ALACHUA COUNTY COURTHOUSE

G A I N E S V I L L E , F L O R I D A

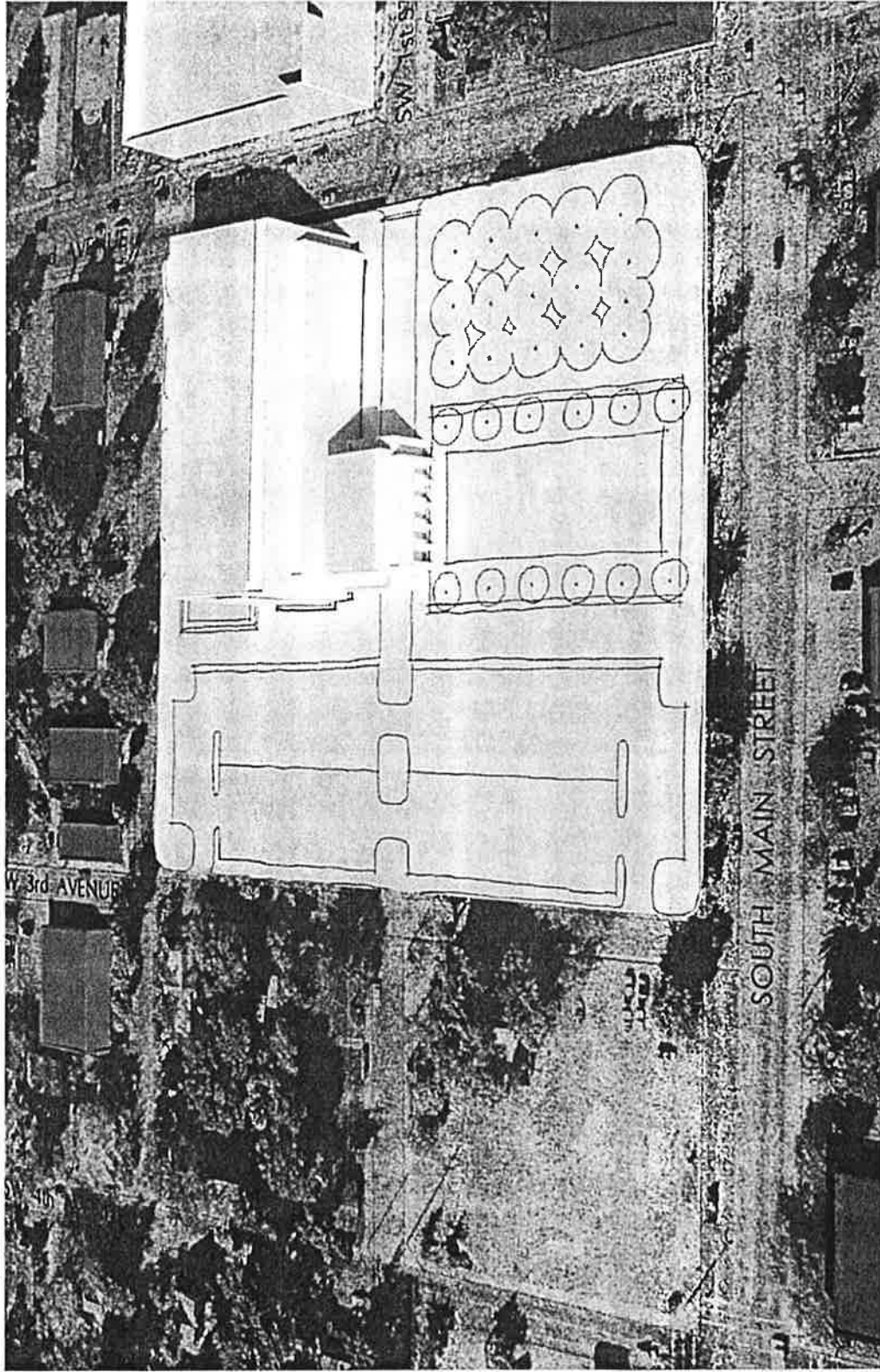
SITE 1 - OPTION B - PHASE I



ALACHUA COUNTY COURTHOUSE

G A I N E S V I L L E , F L O R I D A

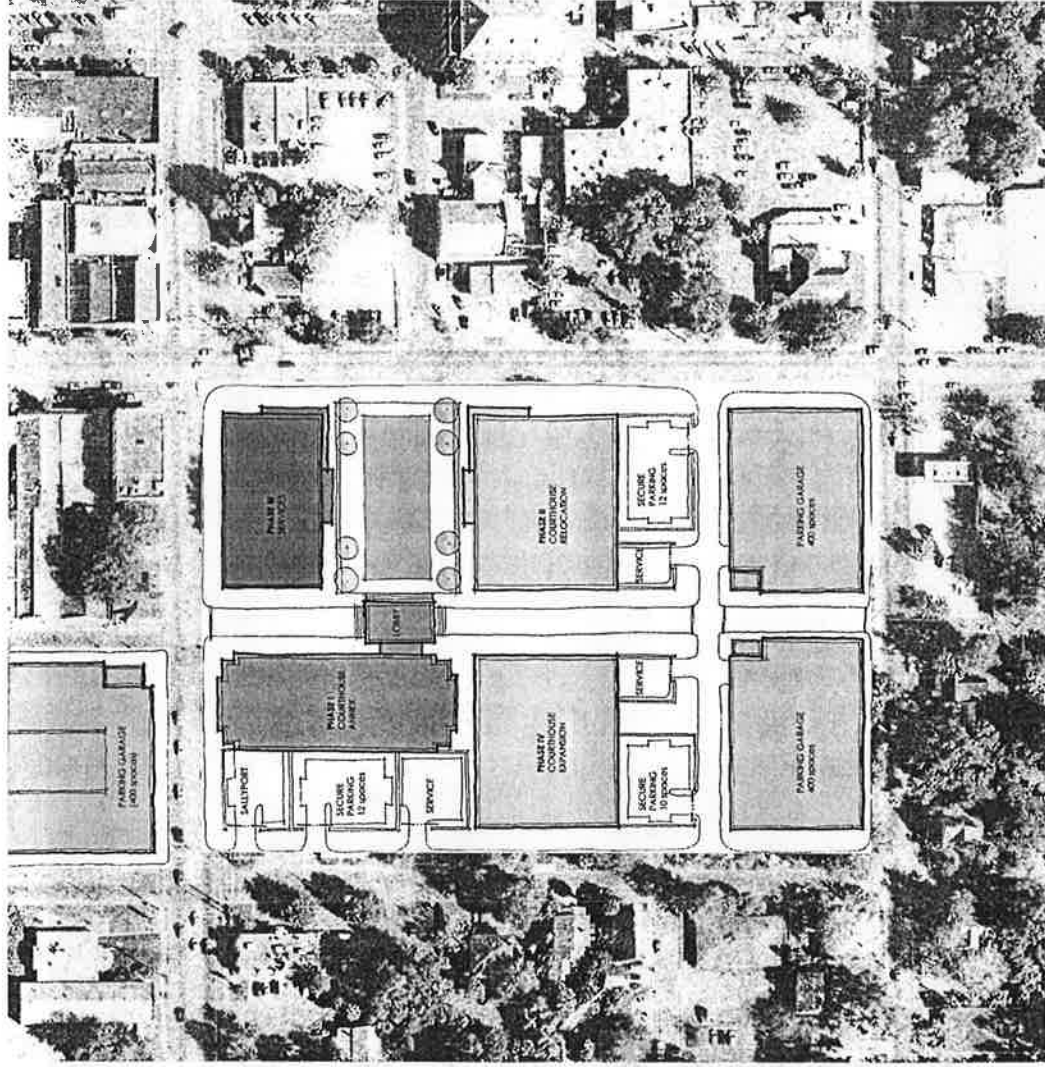
SITE 1 – OPTION B – PHASE I



ALACHUA COUNTY COURTHOUSE

G A I N E S V I L L E , F L O R I D A

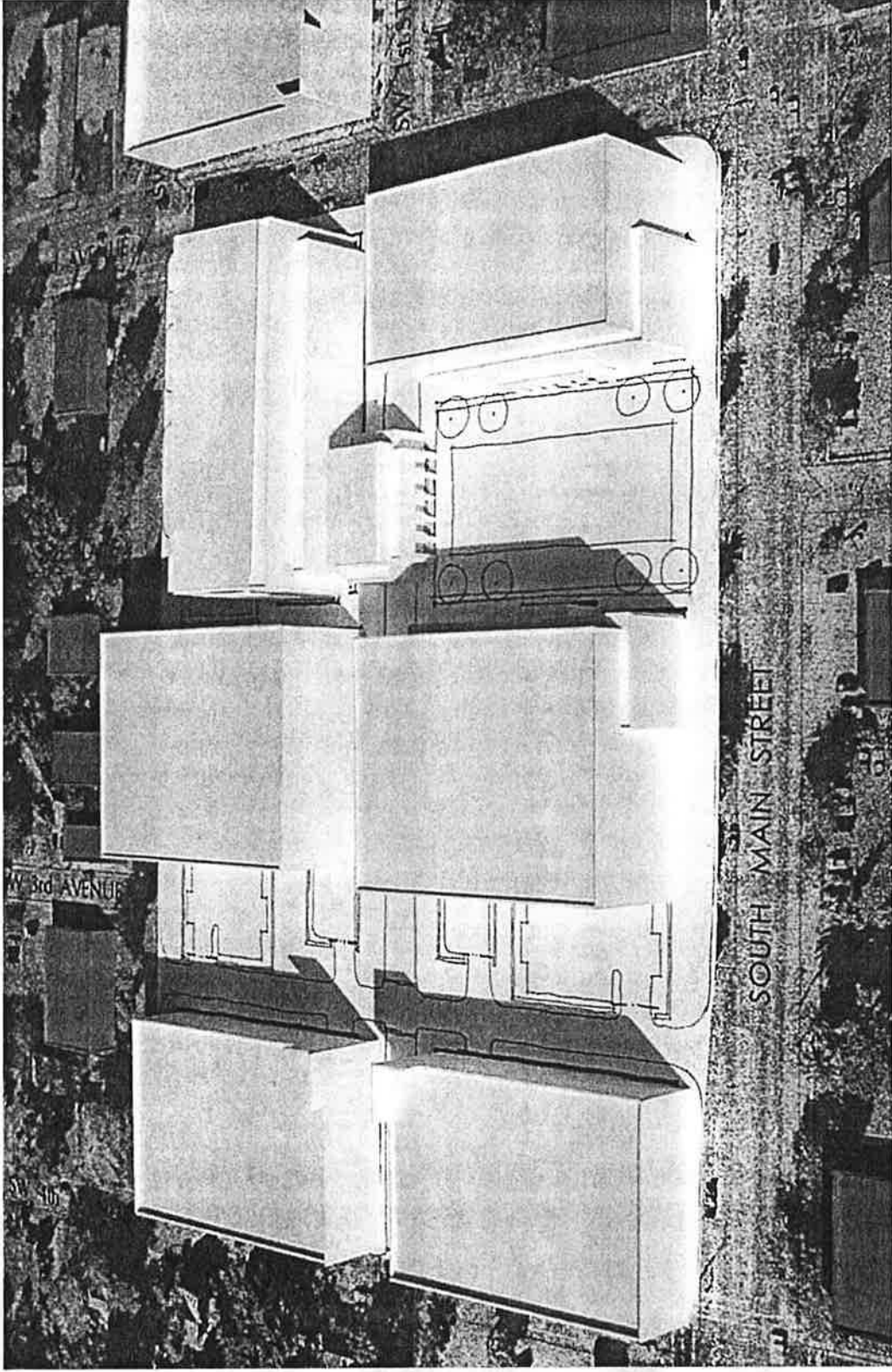
SITE 1 – OPTION B – FULL BUILD-OUT



ALACHUA COUNTY COURTHOUSE

G A I N E S V I L L E , F L O R I D A

SITE 1 – OPTION B – FULL BUILD-OUT



ALACHUA COUNTY COURTHOUSE
G A I N E S V I L L E , F L O R I D A

To develop a functional courthouse complex and create a successful piece of civic architecture that will enrich Downtown Gainesville and Alachua County for years to come, we hereby respectfully request that we:

- Obtain approval to create a contiguous 4 block site for Phase I by closing all applicable streets.
- Obtain an understanding with the City of Gainesville that Phase I construction may not fully meet codes regarding street edges and building set-backs.
- Obtain a commitment from the City of Gainesville to help with required parking issues and the donation of the existing city parking lot at the north-east corner of the site.

ALACHUA COUNTY COURTHOUSE

G A I N E S V I L L E , F L O R I D A