

LEGISLATIVE #

160708A

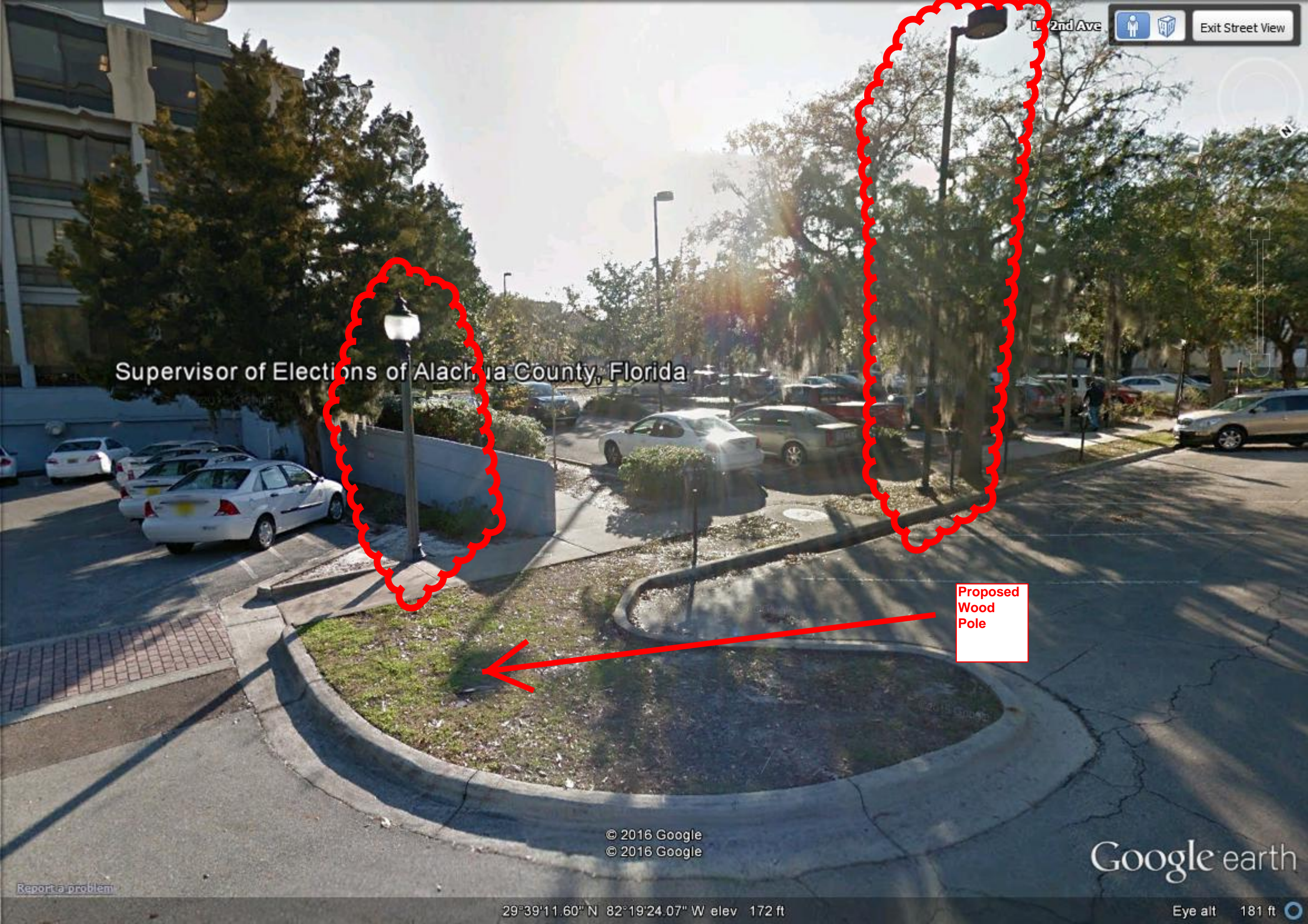
SW 2nd Ave



Proposed
Wood
Pole
Location

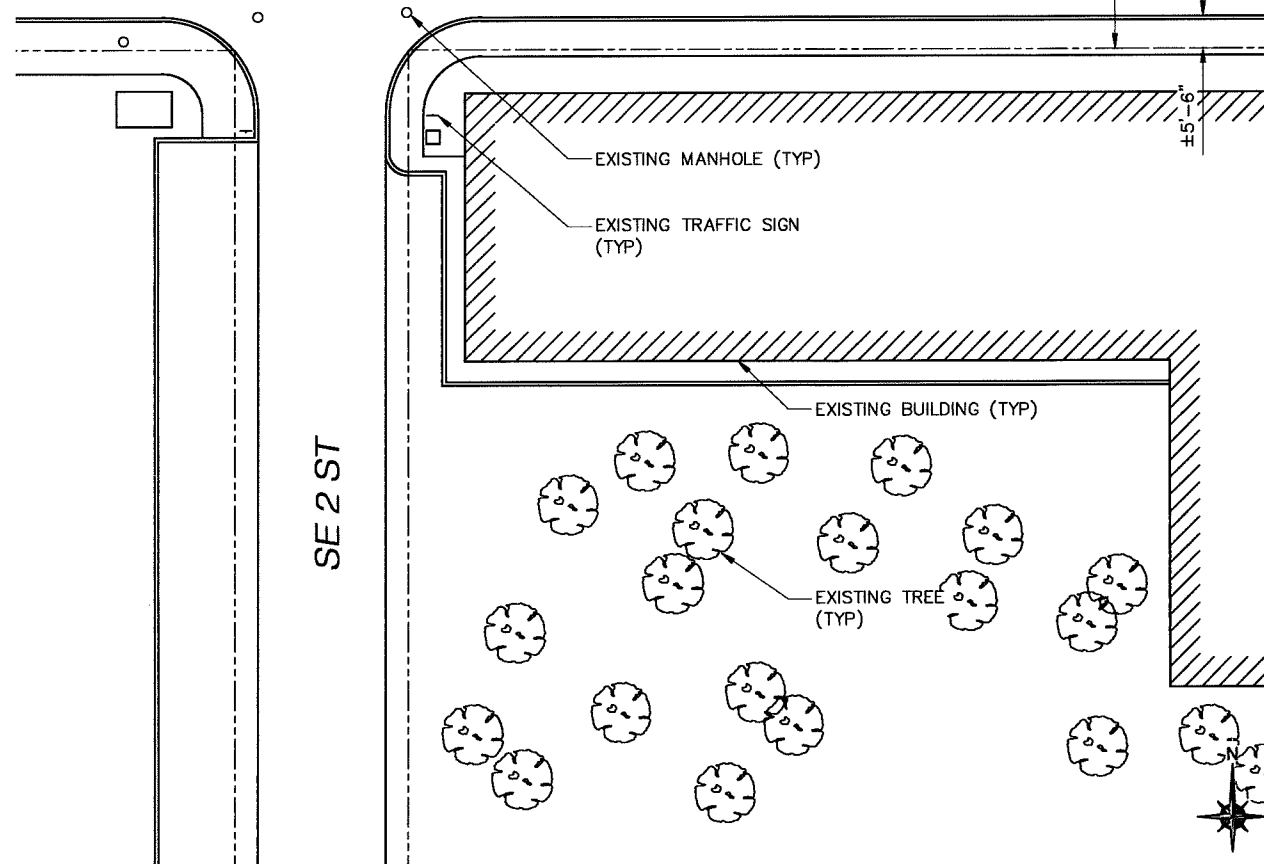
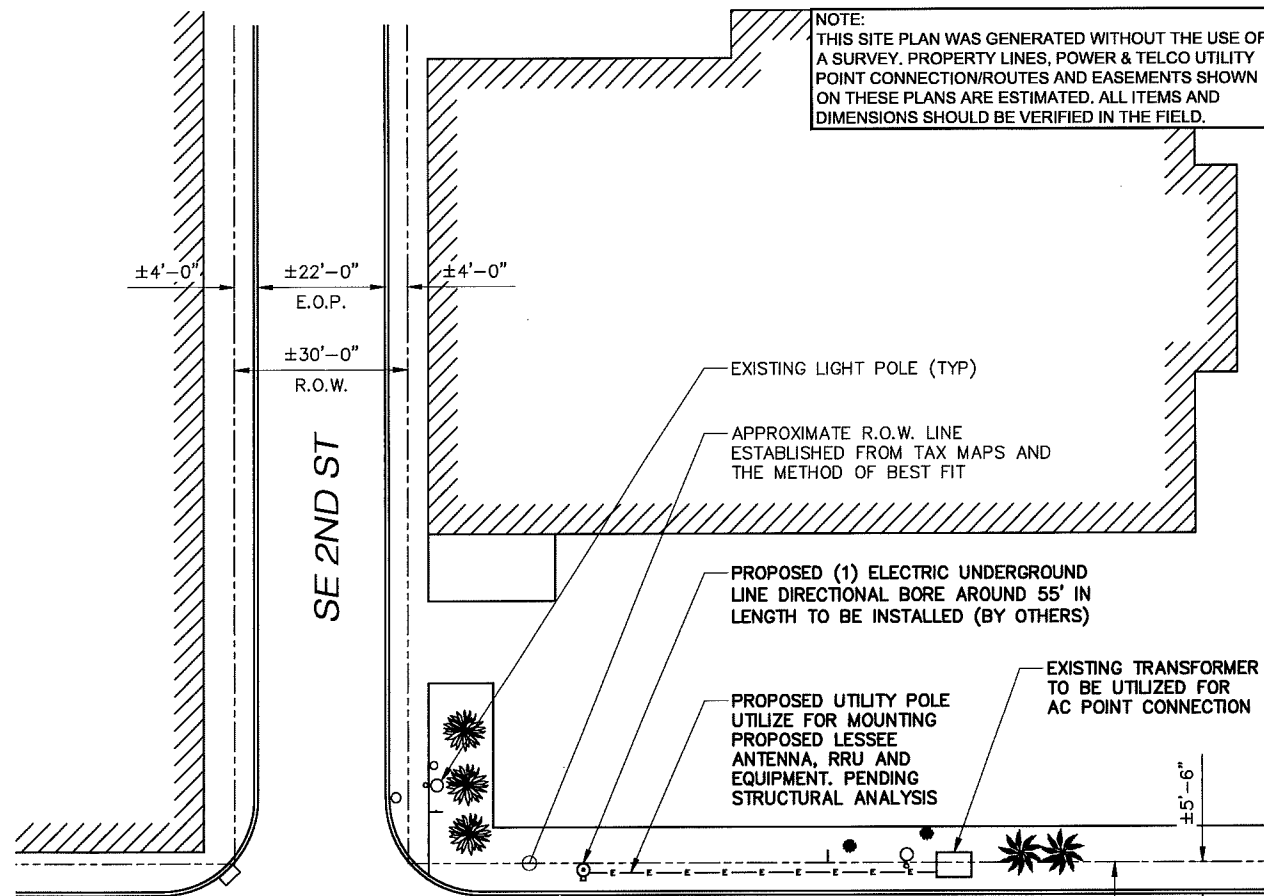
Supervisor of Elections of Alachua County, Florida

Proposed Wood Pole





PROPOSED UTILITY POLE



mobilitie

PROJECT NO: 9FLB000066

DRAWN BY: RC

CHECKED BY: SJB

A 07-04-16 FOR CLIENT REVIEW

KMB DESIGN GROUP, LLC

Stephen A. Bray
PROFESSIONAL ENGINEER

PRELIMINARY
NOT FOR CONSTRUCTION

FL LICENSE: 68902 7/5/16
IT IS A VIOLATION OF THE LAW FOR ANY PERSON, UNLESS THEY ARE ACTING UNDER THE DIRECTION OF A LICENSED PROFESSIONAL ENGINEER, TO ALTER THIS DOCUMENT

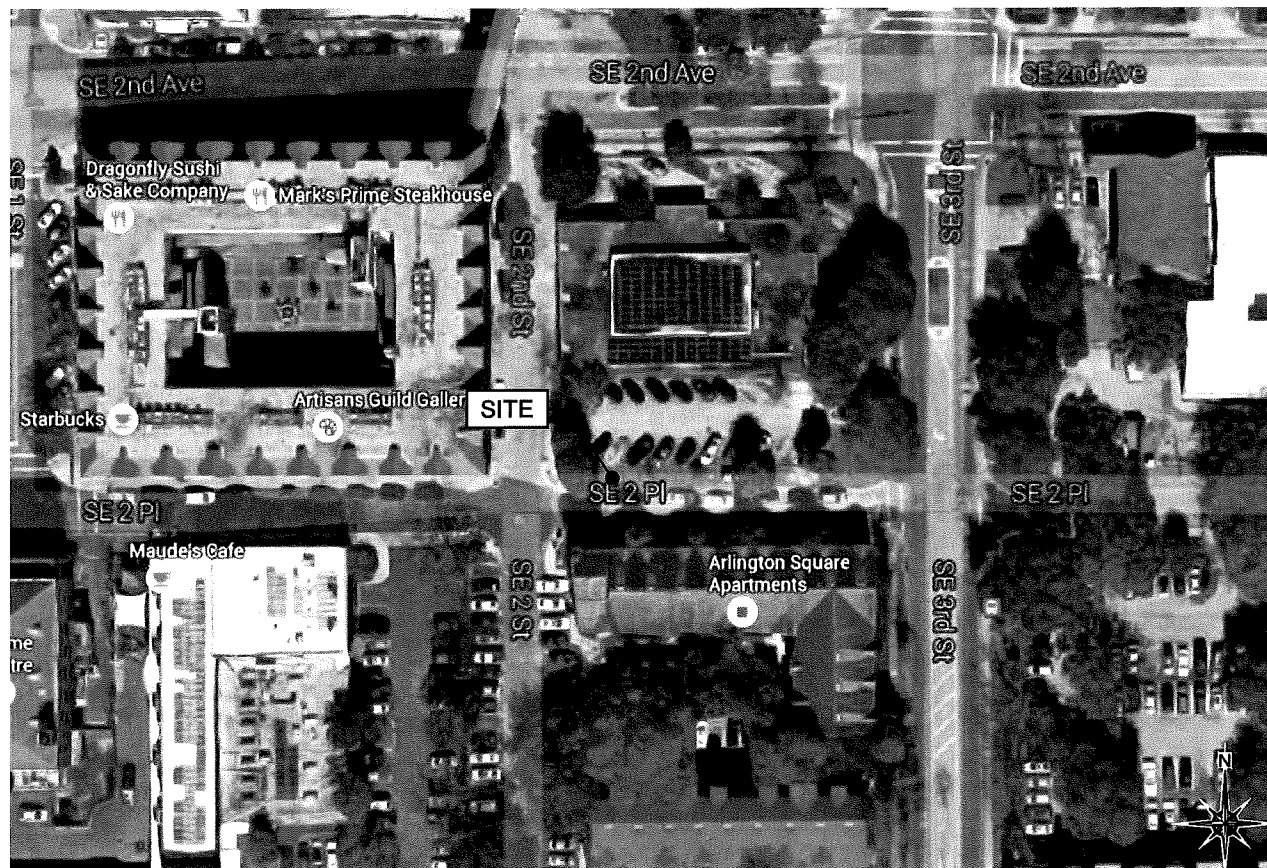
JA90XS014F
SE 2 PL & SE 2ND ST
GAINESVILLE, FL 32601
UTILITY POLE

SHEET TITLE
SITE PLAN & EXHIBIT PHOTO

SHEET NUMBER
1.0

1 EXHIBIT PHOTO

SCALE: NTS



2 AERIAL SITE LOCATION

SCALE: NTS

3 ENLARGED SITE PLAN

11x17 SCALE: 1/32" = 1'-0"

24x36 SCALE: 1/16" = 1'-0"

UTILITY NOTES

WORK INCLUDES:
 THESE NOTES AND ACCOMPANYING DRAWINGS COMPLEMENT THE PROVISIONS AND INSTALLATIONS BY THE ELECTRICAL CONTRACTOR, OF ALL LABOR, MATERIALS AND EQUIPMENT REQUIRED TO INSTALL THE ELECTRICAL WORK COMPLETE IN CONNECTION WITH THIS UTILITY SITE AND SHALL INCLUDE, BUT NOT BE LIMITED TO THE FOLLOWING:
 1. THE PROVISIONS, INSTALLATION AND CONNECTION OF A GROUNDING ELECTRODE SYSTEM COMPLETE WITH SECONDARY GROUNDING, AND CONNECTIONS TO THE INCOMING ELECTRICAL DISTRIBUTION EQUIPMENT.
 2. THE PROVISION AND INSTALLATION OF AN OVERHEAD ELECTRICAL SERVICE OR UNDERGROUND ELECTRICAL SERVICE AND ALL ASSOCIATED WIRE AND CONDUIT AS REQUIRED AND/OR INDICATED ON PLANS.
 3. THE PROVISION AND INSTALLATION OF CONDUIT AND CONNECTIONS FOR LOCAL FIBER SERVICE.
 4. THE FURNISHING AND INSTALLATION OF THE ELECTRICAL SERVICE ENTRANCE CONDUCTORS, CONDUITS, METER SOCKET, AND CONNECTIONS TO THE SERVICE EQUIPMENT.
 5. ALL CONDUITS SHOULD BE LEFT WITH NYLON PULL CORD FOR FUTURE USE.
 6. EXCAVATION, TRENCHING, AND BACKFILLING FOR CONDUIT(S), CABLE(S) AND EXTERNAL GROUNDING SYSTEM.

CODES, PERMITS AND FEES:
 1. ALL REQUIRED PERMITS, LICENSES, INSPECTIONS AND APPROVALS SHALL BE SECURED AND ALL FEES FOR SAME PAID BY CONTRACTOR.
 2. THE INSTALLATION SHALL COMPLY WITH ALL APPLICABLE CODES: STATE, LOCAL AND NATIONAL AND THE DESIGN, PERFORMANCE CHARACTERISTICS AND METHODS OF CONSTRUCTION OF ALL ITEMS AND EQUIPMENT SHALL BE IN ACCORDANCE WITH THE LATEST ISSUE OF THE VARIOUS APPLICABLE STANDARD SPECIFICATIONS OF THE FOLLOWING AUTHORITIES:
 N.E.C. NATIONAL ELECTRICAL CODE
 A.N.S.I. AMERICAN NATIONAL STANDARDS INSTITUTE
 I.E.E.E. INSTITUTE OF ELECTRICAL AND ELECTRONICS ENGINEERS
 A.S.T.M. AMERICAN SOCIETY FOR TESTING MATERIALS
 N.E.M.A. NATIONAL ELECTRICAL MANUFACTURERS ASSOCIATION
 U.L. UNDERWRITERS LABORATORIES, INC.
 N.F.P.A. NATIONAL FIRE PROTECTION ASSOCIATION

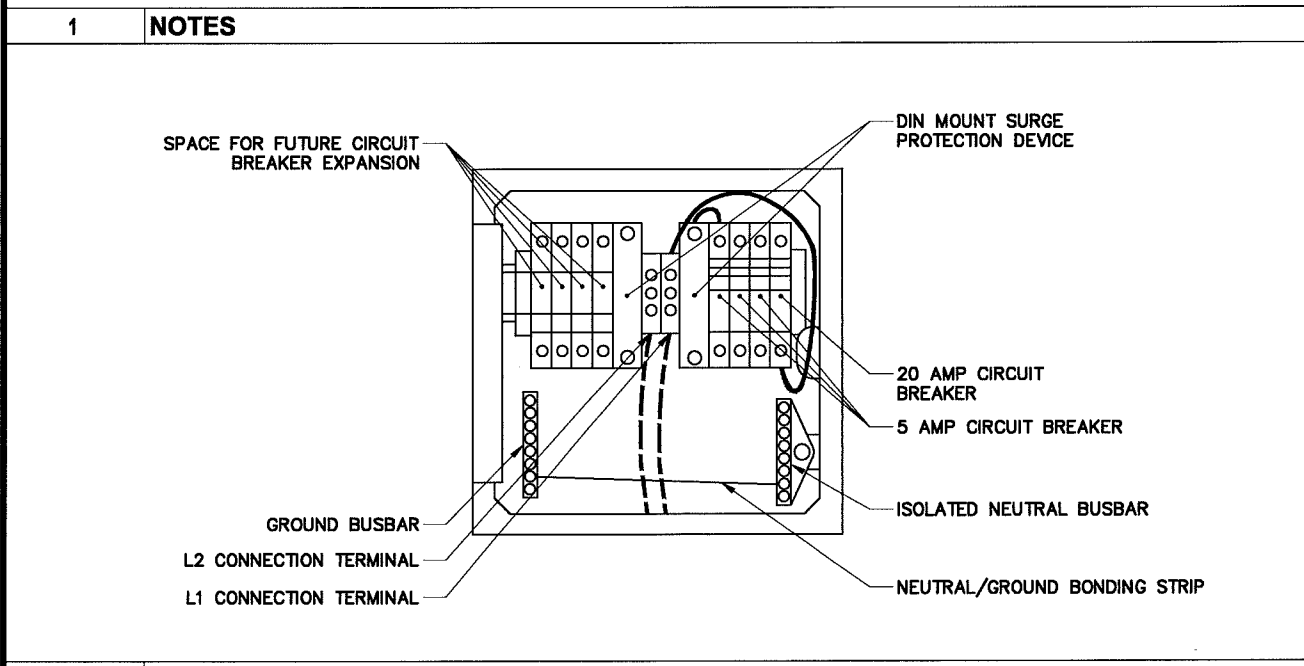
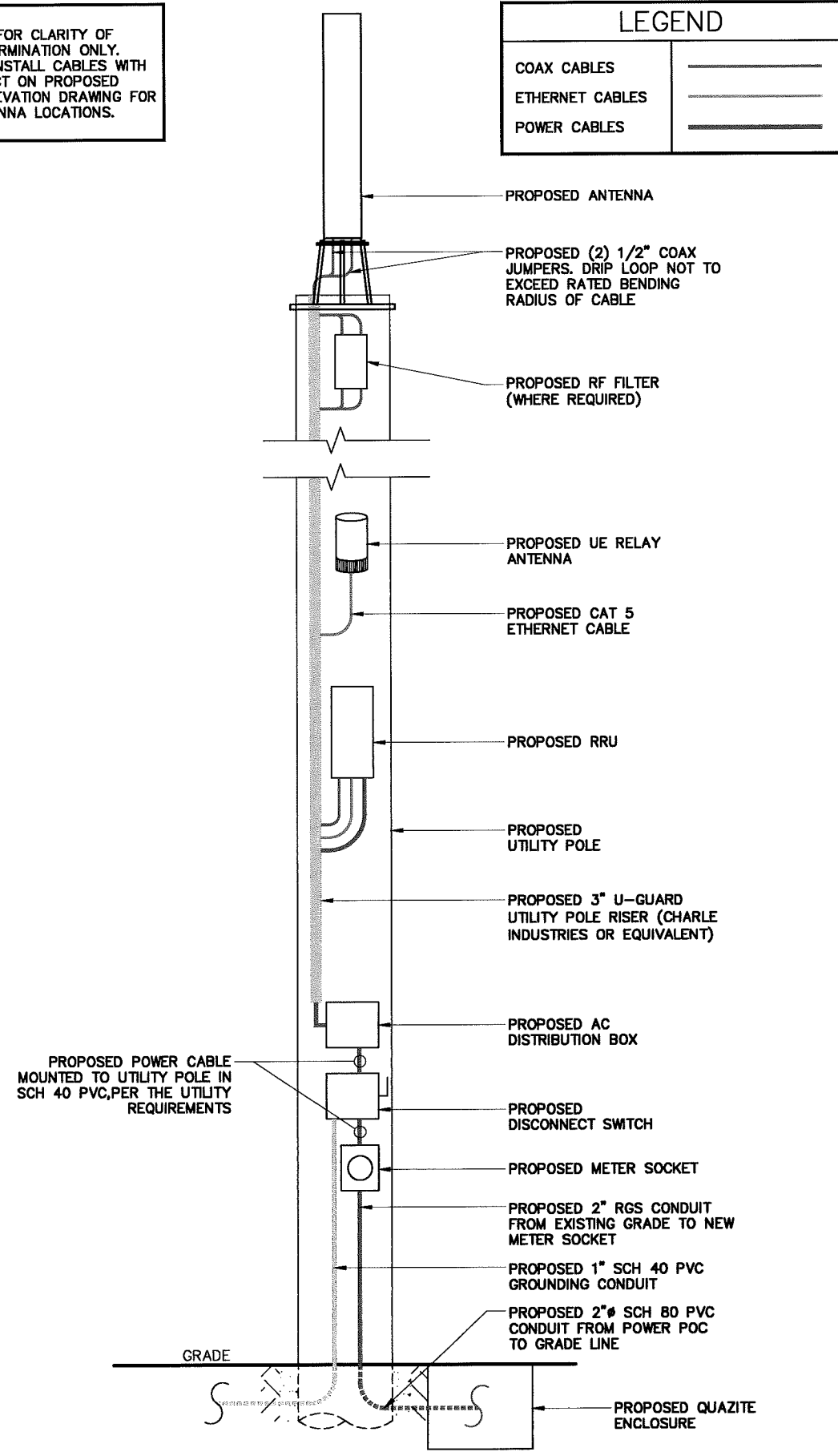
RACEWAYS AND WIRING:
 1. WIRING OF EVERY KIND MUST BE INSTALLED IN CONDUIT, UNLESS NOTED OTHERWISE, OR AS APPROVED BY THE ARCHITECT/ENGINEER.
 2. UNLESS OTHERWISE SPECIFIED, ALL WIRING SHALL BE COPPER (CU) TYPE THWN, SIZED IN ACCORDANCE WITH THE NATIONAL ELECTRICAL CODE AND LOCAL CODES.
 3. RACEWAYS SHALL BE GALVANIZED STEEL, SIZED IN ACCORDANCE WITH THE NATIONAL ELECTRICAL CODE AND LOCAL CODES UNLESS OTHERWISE NOTED. ALL RACEWAYS SHALL BE APPROVED FOR THE INSTALLATION.
 4. PULL OR JUNCTION BOXES SHALL BE PROVIDED AS REQUIRED TO FACILITATE INSTALLATION OF RACEWAYS AND WIRING. PROVIDE JUNCTION AND PULLBOXES FOR CONDUIT RUNS WITH MORE THAN (360) DEGREES OF BENDS.
 5. PROVIDE A COMPLETE RACEWAY AND WIRING INSTALLATION, PERMANENTLY AND EFFECTIVELY GROUNDED IN ACCORDANCE WITH ARTICLE 250 OF THE NATIONAL ELECTRICAL CODE AND LOCAL CODES.
 6. ALL STEEL CONDUIT SHALL BE BONDED AT BOTH ENDS WITH GROUNDING BUSHING.

GENERAL NOTES:
 SEE DETAILS, SCHEDULES AND SPECIFICATIONS FOR ADDITIONAL REQUIREMENTS AND INFORMATION. CHECK ARCHITECTURAL, STRUCTURAL, AND OTHER MECHANICAL AND ELECTRICAL DRAWINGS FOR SCALE, SPACE LIMITATIONS, COORDINATION, AND ADDITIONAL INFORMATION, ETC. REPORT ANY DISCREPANCIES, CONFLICTS, ETC. TO ARCHITECT/ENGINEER BEFORE SUBMITTING BID. ALL EQUIPMENT FURNISHED BY OTHERS (FBO) SHALL BE PROVIDED WITH PROPER MOTOR STARTERS, DISCONNECTS, CONTROLS, ETC. BY THE ELECTRICAL CONTRACTOR UNLESS SPECIFICALLY NOTED OTHERWISE. THE ELECTRICAL CONTRACTOR SHALL INSTALL AND COMPLETELY WIRE ALL ASSOCIATED EQUIPMENT IN ACCORDANCE WITH MANUFACTURER'S WIRE DIAGRAMS AND AS REQUIRED FOR A COMPLETE OPERATING INSTALLATION. ELECTRICAL CONTRACTOR SHALL VERIFY AND COORDINATE ELECTRICAL CHARACTERISTICS AND REQUIREMENTS OF (FBO) EQUIPMENT PRIOR TO ROUGH-IN OF CONDUIT AND WIRING TO AVOID CONFLICTS.

COORDINATION WITH UTILITY COMPANY:
 THE ELECTRICAL CONTRACTOR SHALL COORDINATE COMPLETE ELECTRICAL SERVICE WITH LOCAL UTILITY COMPANY FOR A COMPLETE OPERATIONS SYSTEM, INCLUDING TRANSFORMER CONNECTIONS, CONCRETE TRANSFORMER PADS, IF REQUIRED, METER SOCKETS, PRIMARY CABLE RACEWAY REQUIREMENTS, SECONDARY SERVICE, ETC. PRIOR TO SUBMITTING BID TO INCLUDE ALL LABOR AND MATERIALS. THE ELECTRICAL CONTRACTOR SHALL INCLUDE IN THE BID ANY OPTIONAL OR EXCESS FACILITY CHARGES ASSOCIATED WITH PROVIDING ELECTRICAL SERVICE FROM LOCAL UTILITY COMPANY. VERIFY BEFORE BIDDING TO INCLUDE ALL COSTS. THE ELECTRICAL CONTRACTOR SHALL VERIFY THE AVAILABLE FAULT CURRENT WITH THE LOCAL UTILITY COMPANY PRIOR TO SUBMITTING BID. ADJUST A.I.C. RATINGS OF ALL OVER CURRENT PROTECTION DEVICES IN DISTRIBUTION EQUIPMENT AS REQUIRED TO COORDINATE WITH AVAILABLE FAULT CURRENT FROM LOCAL UTILITY COMPANY.

NOTE:
 CABLING DIAGRAM IS FOR CLARITY OF CABLE ROUTE AND TERMINATION ONLY. CONTRACTOR SHALL INSTALL CABLES WITH MINIMAL VISUAL IMPACT ON PROPOSED UTILITY POLE. SEE ELEVATION DRAWING FOR EQUIPMENT AND ANTENNA LOCATIONS.

LEGEND	
COAX CABLES	
ETHERNET CABLES	
POWER CABLES	



2 **AC DISTRIBUTION PANEL**
 SCALE: NTS

3 **CABLE DIAGRAM**
 SCALE: NTS

PROJECT NO:	9FLB000066
DRAWN BY:	RC
CHECKED BY:	SJB

A	07-04-16	FOR CLIENT REVIEW
---	----------	-------------------

KMB DESIGN GROUP, LLC

Stephen A. Bray
 PROFESSIONAL ENGINEER

PRELIMINARY
 NOT FOR CONSTRUCTION

FL LICENSE: 68902 7/5/16

IT IS A VIOLATION OF THE LAW FOR ANY PERSON, UNLESS THEY ARE ACTING UNDER THE DIRECTION OF A LICENSED PROFESSIONAL ENGINEER, TO ALTER THIS DOCUMENT

JA90XS014F

SE 2 PL & SE 2ND ST
 GAINESVILLE, FL 32601

UTILITY POLE

SHEET TITLE
 ELECTRICAL DETAILS

SHEET NUMBER
4.0

