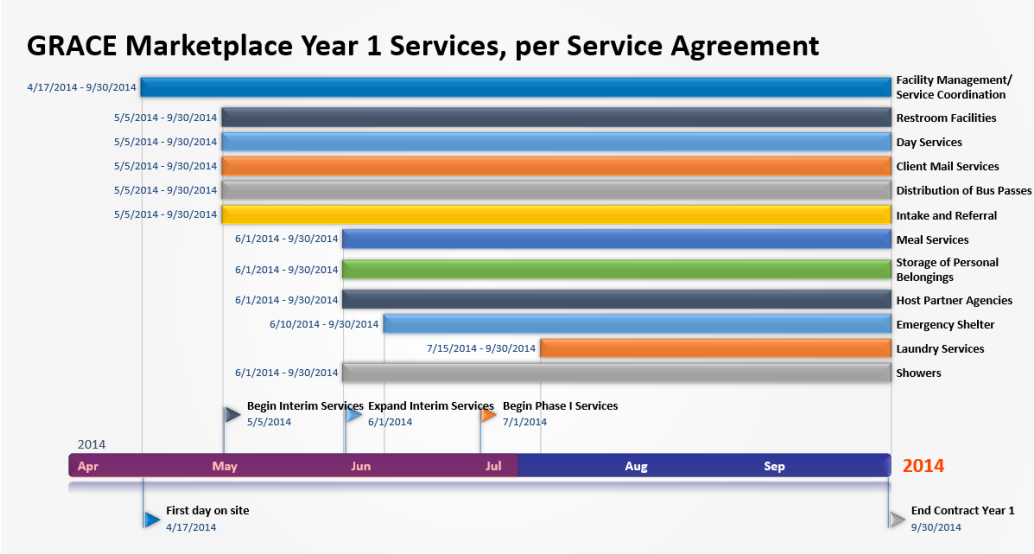


# Commission Update July 2014

## Executive Summary

Grace Marketplace has been operational for 11 weeks, and continues to meet all requirements outlined in the Service Agreement. Current strategic concerns revolve around preparing for the closing of Tent City (July 8) and the forthcoming closure of the Bo Diddley Community Plaza in November. To date, the transition for individuals living in the woods surrounding the facility has been smooth, with the number of people coming in for meals and supportive services continuing to grow. Two fundraising programs (motor donor, land donation program) are in operation, with additional programs in development. We received two vehicles through the motor donor program, and one property through the land program in June. Day-to-day cash flow issues are stabilizing, and maximum effort fundraising continues to prepare for cash shortfall projected for October 2014.

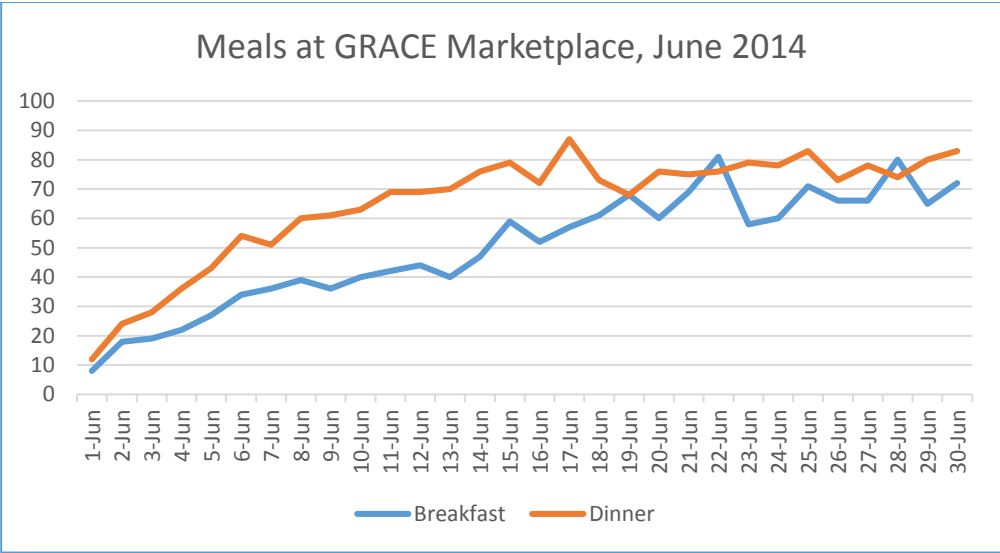


## Services provided: June 2014

- I. Per the service agreement, the following services were available at GRACE Marketplace, followed by the number of those services provided. Services provided in advance of the contractual requirement are marked with a \*:

Restroom facilities	Mail/telephone/computer service (37)*
Breakfast (1,497)	Day services (450)*
Dinner (1,950)	Meeting space for outside agencies
Emergency shelter (225)*	Coordinated supportive services (452)
Storage of personal belongings (45)*	Showers (42)*

# Commission Update July 2014



## Changes to services available at GRACE Marketplace:

- I. **Overnight shelter**
  - a. On Tuesday, June 10, 2014, GRACE Marketplace opened the outdoor pavilion to overnight campers, providing a safe, legal place for people to sleep.
  - b. Beginning Wednesday, June 25, 2014, GRACE Marketplace has staff and volunteers on-site 24/7 to provide access to restrooms and running water to people staying on the pavilion.
  - c. Data collection on overnight pavilion use began June 25, and will be included in future updates. Since June 10, up to 25 people per night have used the pavilion as shelter; at least 12 of these individuals report having slept previously on the Bo Diddley Community Plaza.
- II. **Showers**
  - a. GRACE Marketplace visitors can take showers in the Administration Building Monday – Friday from 7a-5p, and on weekends from 8a – 11a.
- III. **Laundry facilities**
  - a. Washing machine donation received and installed July 1, 2014.
  - b. City has provided gas dryer; currently awaiting installation.
  - c. Coordinating with City to finalize laundry room for machine installation – laundry room will be operational upon needed renovations (drain pipes, exhaust outlets).

## Funding

- I. **Notices of Award June 2014**
  - a. In June, the Florida Dept. of Children & Families notified the Alachua County Coalition for the Homeless & Hungry (ACCHH) of a \$105,000 grant award to be used for staffing purposes and general Coalition operations. Award date: July 1, 2014. Contract forthcoming.
  - b. The U.S. Dept. of Housing & Urban Development notified ACCHH of two grant awards. Anticipated date funds will be released: January 2015
    - i. An \$11,000 Continuum of Care planning grant that will help offset miscellaneous administrative costs at GRACE Marketplace.
    - ii. A \$49,000 **Rapid Re-housing** grant to move people from homelessness into permanent housing.
- II. **Grant applications submitted June 2014**



## Commission Update July 2014

- a. Alachua County Community Agency Partnership Program (CAPP)
  - i. \$80,000 **Rapid Re-housing** grant application submitted in June
  - ii. \$45,000 application for improving nutrition of meals at GRACE
- b. Florida Dept. of Children and Families
  - i. \$45,000 Emergency Solutions Grant (ESG) application submitted for street outreach to attract homeless people living on the streets, in the woods, and on the Bo Diddley Community Plaza to GRACE Marketplace, and provide case management.
  - ii. \$60,000 Temporary Assistance to Needy Families (TANF) application submitted for homelessness prevention.