

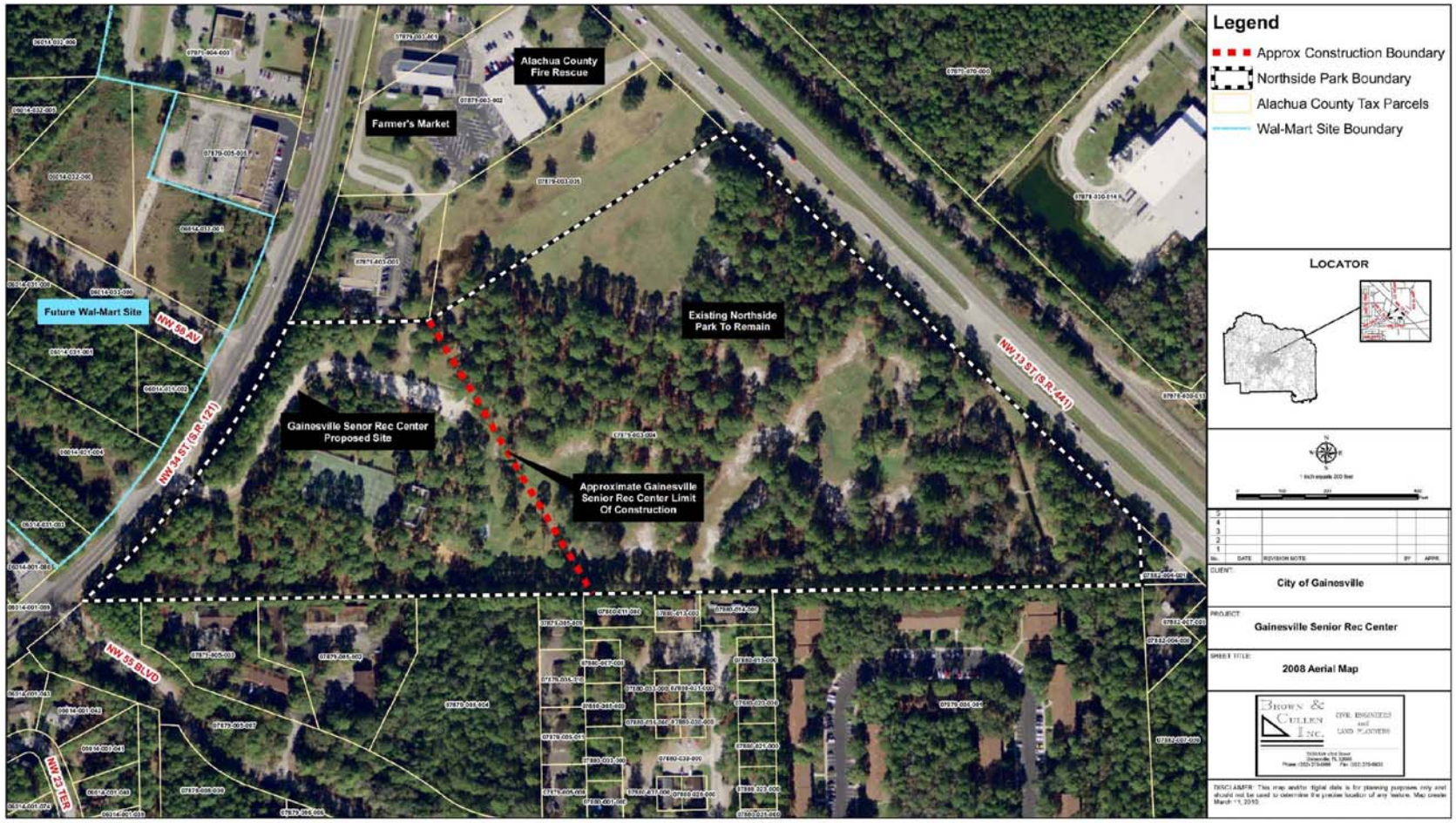
Senior Recreation Center



*Alachua County & City of Gainesville
Senior Recreation Center*



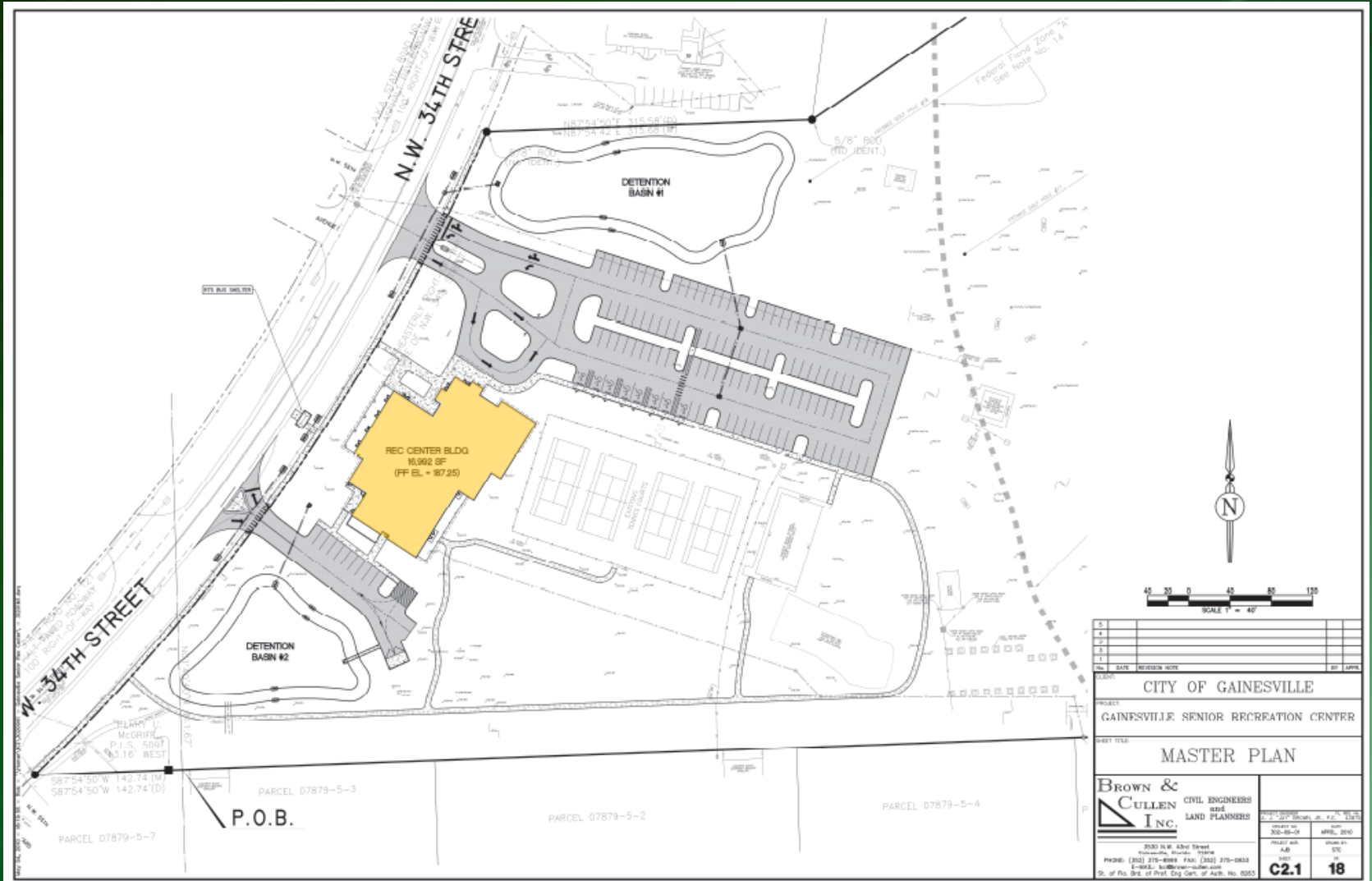
Site Overview



Achua County & City of Gainesville Senior Recreation Center



Site Layout



5			
4			
3			
2			
1			
DATE	REVISION	BY	APPV
CITY OF GAINESVILLE			
PROJECT GAINESVILLE SENIOR RECREATION CENTER			
SHEET TITLE MASTER PLAN			
BROWN & CULLEN INC. CIVIL ENGINEERS AND LAND PLANNERS	2030 N.W. 43rd Street Gainesville, Florida 32608 PHONE: (352) 275-8889 FAX: (352) 275-0833 E-MAIL: info@brown-cullen.com St. of Fla. Div. of Prof. Eng. Cert. of Auth. No. 0255		
	PROJECT NO. 302-05-0	DATE APRIL 2010	SHEET NO. 18



Alachua County & City of Gainesville Senior Recreation Center



Schematic Floor Plan

Lobby / Reception / Library

Lounge / Billiards / Fitness

Office Space

Classrooms

Multi-Purpose Room

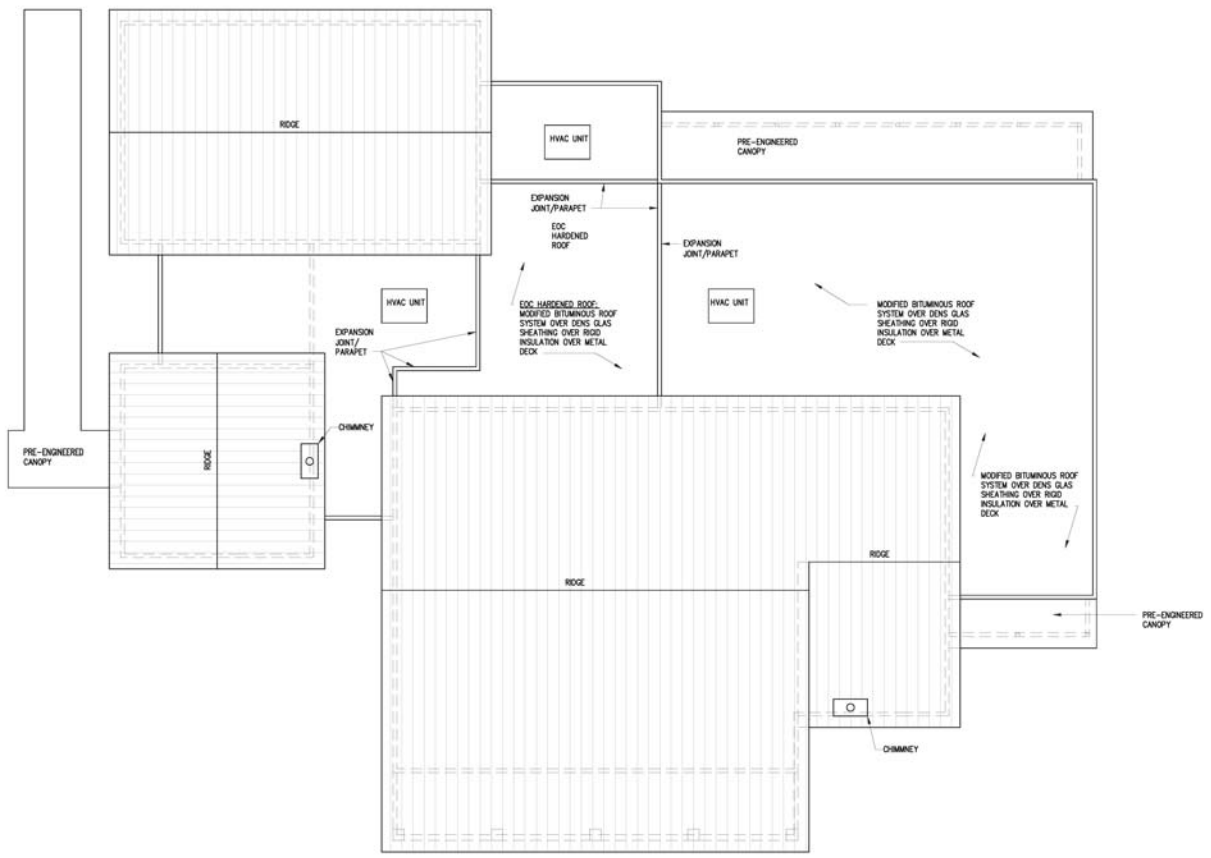
Kitchen



Alachua County & City of Gainesville Senior Recreation Center



Roof Plan



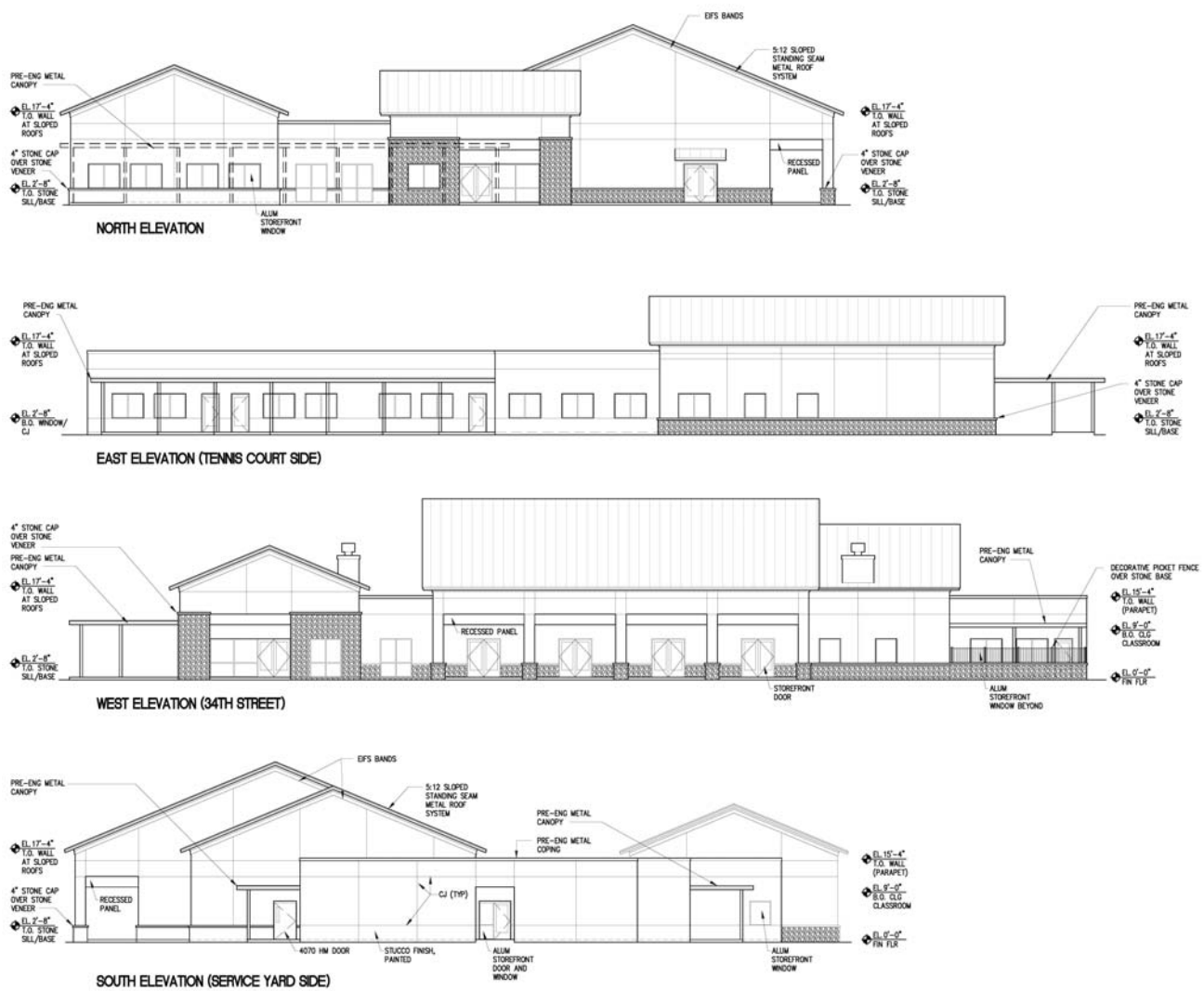
ROOF PLAN



Alachua County & City of Gainesville Senior Recreation Center



Building Elevations



Achua County & City of Gainesville Senior Recreation Center



LEED Certification

Silver: 50 - 59 Points



LEED 2009 for New Construction and Major Renovation

Gainesville Senior Recreation Center

Project Checklist

2/10/10

17 8 1 Sustainable Sites Possible Points: 26

Y	N	?	Prereq	Description	Points
Y			Prereq 1	Construction Activity Pollution Prevention	
		1	Credit 1	Site Selection	1
	5		Credit 2	Development Density and Community Connectivity	5
	1		Credit 3	Brownfield Redevelopment	1
6			Credit 4.1	Alternative Transportation—Public Transportation Access	6
1			Credit 4.2	Alternative Transportation—Bicycle Storage and Changing Rooms	1
3			Credit 4.3	Alternative Transportation—Low-Emitting and Fuel-Efficient Vehicles	3
2			Credit 4.4	Alternative Transportation—Parking Capacity	2
	1		Credit 5.1	Site Development—Protect or Restore Habitat	1
1			Credit 5.2	Site Development—Maximize Open Space	1
1			Credit 6.1	Stormwater Design—Quantity Control	1
1			Credit 6.2	Stormwater Design—Quality Control	1
	1		Credit 7.1	Heat Island Effect—Non-roof	1
1			Credit 7.2	Heat Island Effect—Roof	1
1			Credit 8	Light Pollution Reduction	1

4 3 3 Water Efficiency Possible Points: 10

Y	N	?	Prereq	Description	Points
Y			Prereq 1	Water Use Reduction—20% Reduction	
2		2	Credit 1	Water Efficient Landscaping	2 to 4
2		2	Credit 2	Innovative Wastewater Technologies	2
2	1	1	Credit 3	Water Use Reduction	2 to 4

5 23 7 Energy and Atmosphere Possible Points: 35

Y	N	?	Prereq	Description	Points
Y			Prereq 1	Fundamental Commissioning of Building Energy Systems	
Y			Prereq 2	Minimum Energy Performance	
Y			Prereq 3	Fundamental Refrigerant Management	
3	16		Credit 1	Optimize Energy Performance	1 to 19
	7		Credit 2	On-Site Renewable Energy	1 to 7
	2		Credit 3	Enhanced Commissioning	2
2			Credit 4	Enhanced Refrigerant Management	2
	3		Credit 5	Measurement and Verification	3
	2		Credit 6	Green Power	2

3 7 4 Materials and Resources Possible Points: 14

Y	N	?	Prereq	Description	Points
Y			Prereq 1	Storage and Collection of Recyclables	
	3		Credit 1.1	Building Reuse—Maintain Existing Walls, Floors, and Roof	1 to 3
	1		Credit 1.2	Building Reuse—Maintain 50% of Interior Non-Structural Elements	1
1		1	Credit 2	Construction Waste Management	1 to 2
	2		Credit 3	Materials Reuse	1 to 2

Materials and Resources, Continued

Y	N	?	Prereq	Description	Points
1		1	Credit 4	Recycled Content	1 to 2
1		1	Credit 5	Regional Materials	1 to 2
	1		Credit 6	Rapidly Renewable Materials	1
	1		Credit 7	Certified Wood	1

12 2 1 Indoor Environmental Quality Possible Points: 15

Y	N	?	Prereq	Description	Points
Y			Prereq 1	Minimum Indoor Air Quality Performance	
Y			Prereq 2	Environmental Tobacco Smoke (ETS) Control	
1			Credit 1	Outdoor Air Delivery Monitoring	1
	1		Credit 2	Increased Ventilation	1
1			Credit 3.1	Construction IAQ Management Plan—During Construction	1
1			Credit 3.2	Construction IAQ Management Plan—Before Occupancy	1
1			Credit 4.1	Low-Emitting Materials—Adhesives and Sealants	1
1			Credit 4.2	Low-Emitting Materials—Paints and Coatings	1
1			Credit 4.3	Low-Emitting Materials—Flooring Systems	1
1			Credit 4.4	Low-Emitting Materials—Composite Wood and Agrifiber Products	1
1			Credit 5	Indoor Chemical and Pollutant Source Control	1
1			Credit 6.1	Controllability of Systems—Lighting	1
1		1	Credit 6.2	Controllability of Systems—Thermal Comfort	1
1			Credit 7.1	Thermal Comfort—Design	1
1			Credit 7.2	Thermal Comfort—Verification	1
1			Credit 8.1	Daylight and Views—Daylight	1
1		1	Credit 8.2	Daylight and Views—Views	1

3 1 2 Innovation and Design Process Possible Points: 6

Y	N	?	Prereq	Description	Points
1			Credit 1.1	Innovation in Design: Green Housekeeping	1
1			Credit 1.2	Innovation in Design: Education	1
	1		Credit 1.3	Innovation in Design: Water Use Reduction, 40%	1
	1		Credit 1.4	Innovation in Design: Construction Waste Management, 95%	1
	1		Credit 1.5	Innovation in Design: (MAXIMUM 3 EXEMPLARY PTS)	1
1			Credit 2	LEED Accredited Professional	1

1 2 1 Regional Priority Credits Possible Points: 4

Y	N	?	Prereq	Description	Points
	1		Credit 1.1	Regional Priority: SS2 Development Density/Community Connectivity	1
	1		Credit 1.2	Regional Priority: SS4.1 Alternative Transportation—Public	1
	1		Credit 1.3	Regional Priority: EA 1 - 28% Energy Savings	1
	1		Credit 1.4	Regional Priority: MR Regional Materials 20%	1

45 46 19 Total Possible Points: 110

Certified 40 to 49 points Silver 50 to 59 points Gold 60 to 79 points Platinum 80 to 110



Aloha County & City of Gainesville Senior Recreation Center

