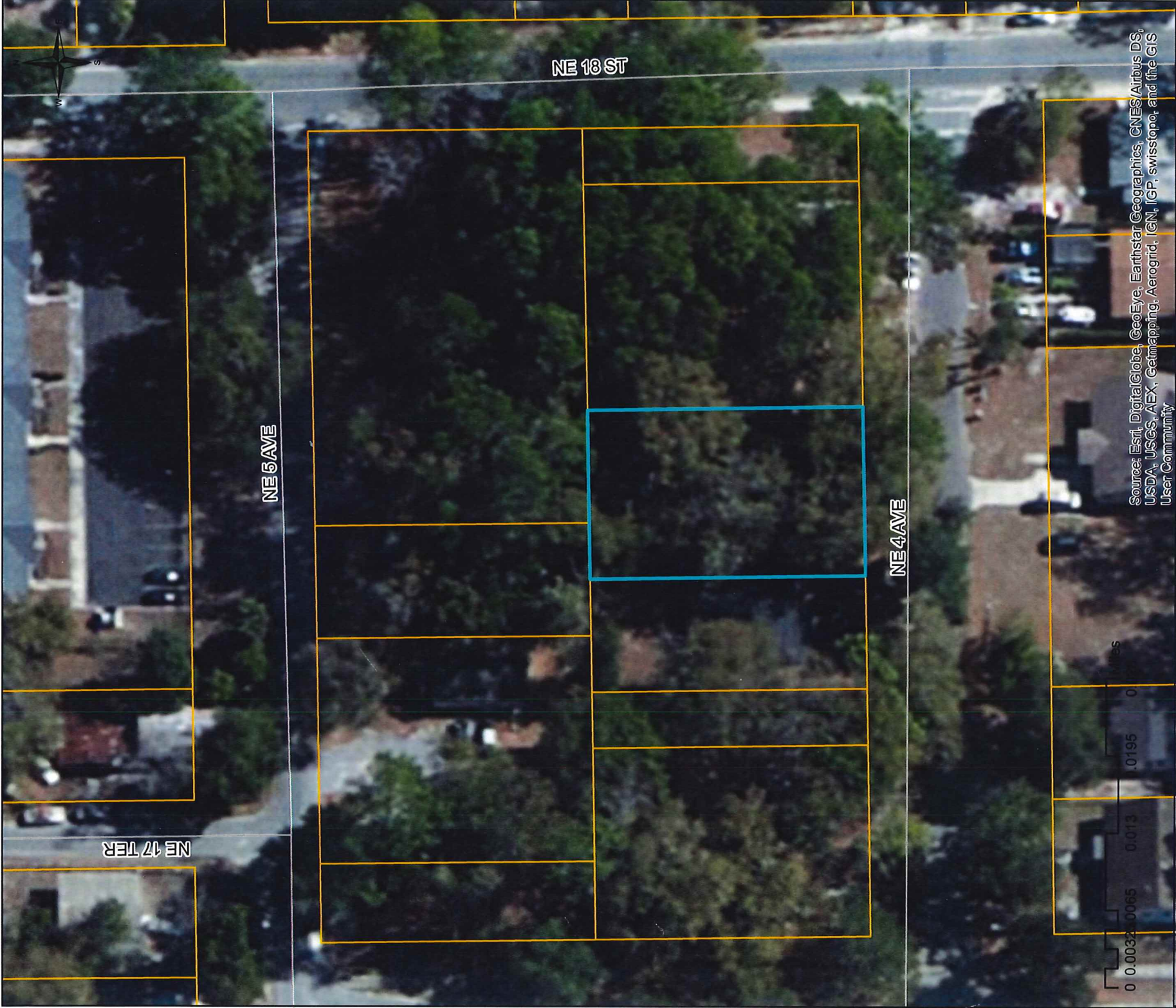


SE 4 ST

SE 9 PL



Sources: Esri, DigitalGlobe, GeoEye, Earthstar Geographics, CNES/Airbus DS, USDA, USGS, AEX, Getmapping, Aerogrid, IGN, IGP, swisstopo, and the GIS User Community



City owned parcel no.  
 11367-000-000-1718 NE 4th Avenue

**Legend**

- Streets\_PWD
- ACPA\_parcel

This data is for informational purposes only. Do not rely on this data for accuracy of dimensions, size, or location. The City of Gainville does not assume responsibility to update this information or for any error or omission in the data. For more information please contact the City of Gainville Public Works Dept. GIS at (352) 393-8483. Data prepared: 7/5/2016.