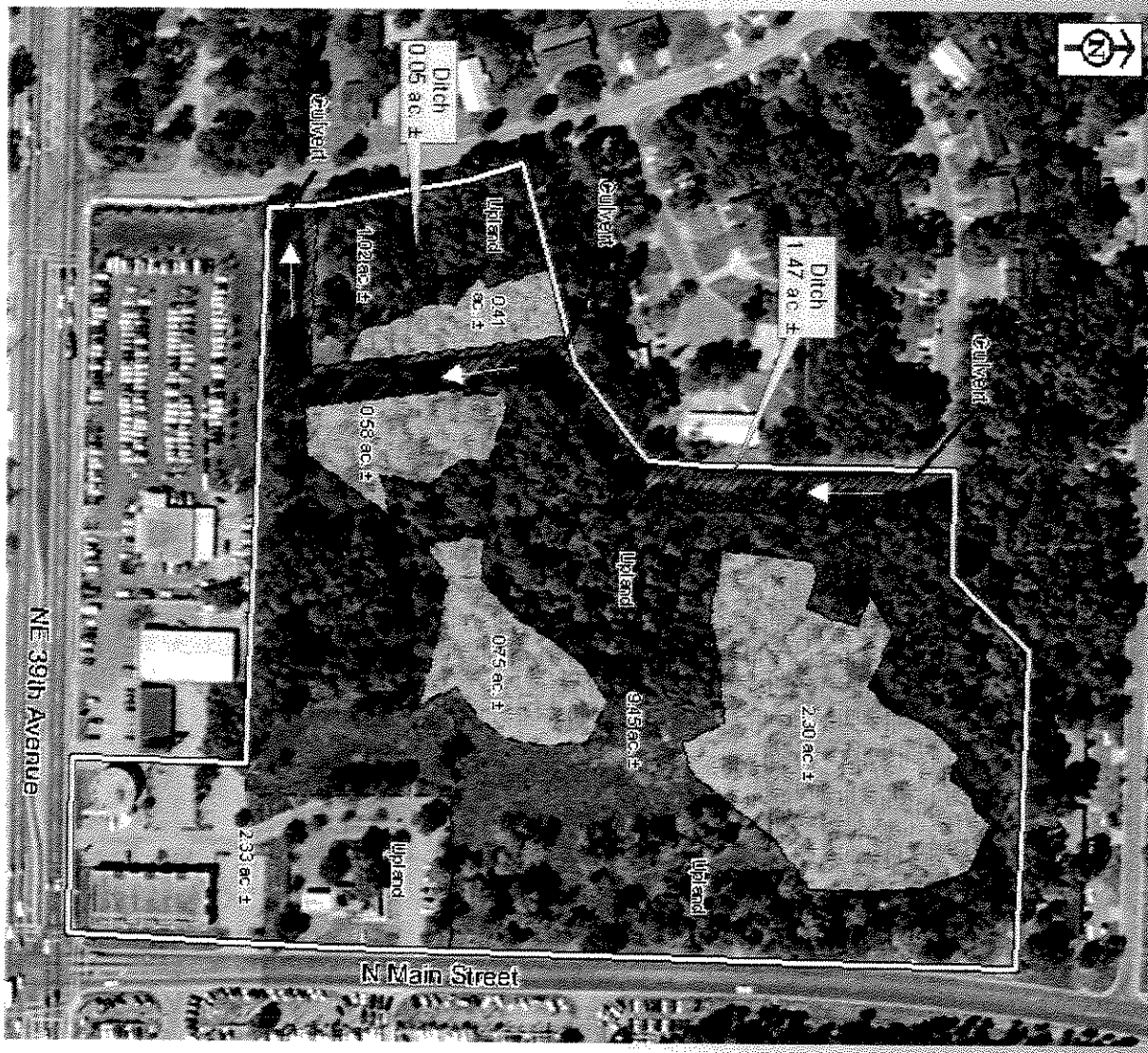


070705H

# Project Site



# Approach

- Study site conditions
- Delineate wetlands
- Review wetlands with city staff
- Review functional assessment with staff
- Agree upon mitigation with staff

070704H

## Sec 30-302.1(d)

*“Avoidance through practicable design modification is not required when the ecological value of the function provided by the area of wetland is low and the proposed mitigation will provide greater long-term ecological value than the area to be affected.”*

070705H

# Existing Conditions Affecting Wetland Ecological Function

- Drainage – ditch, streets
- Urbanization
  - Subdivision – north and west
  - Commercial – south
  - Streets – east, south, west
- Fragmentation
- Exotic, nuisance species

# Wetlands Function

## Sec 30-302.1

- Water quality improvement
- Flood plain and erosion control
- Ground water recharge
- Wildlife habitat, especially for protected species
- Recreational benefits
- Aesthetic value
- Educational opportunity



070706 H

# Mitigation Needs

- Determined by UMAM
- Low functional value confirmed

10/10/10

070708H

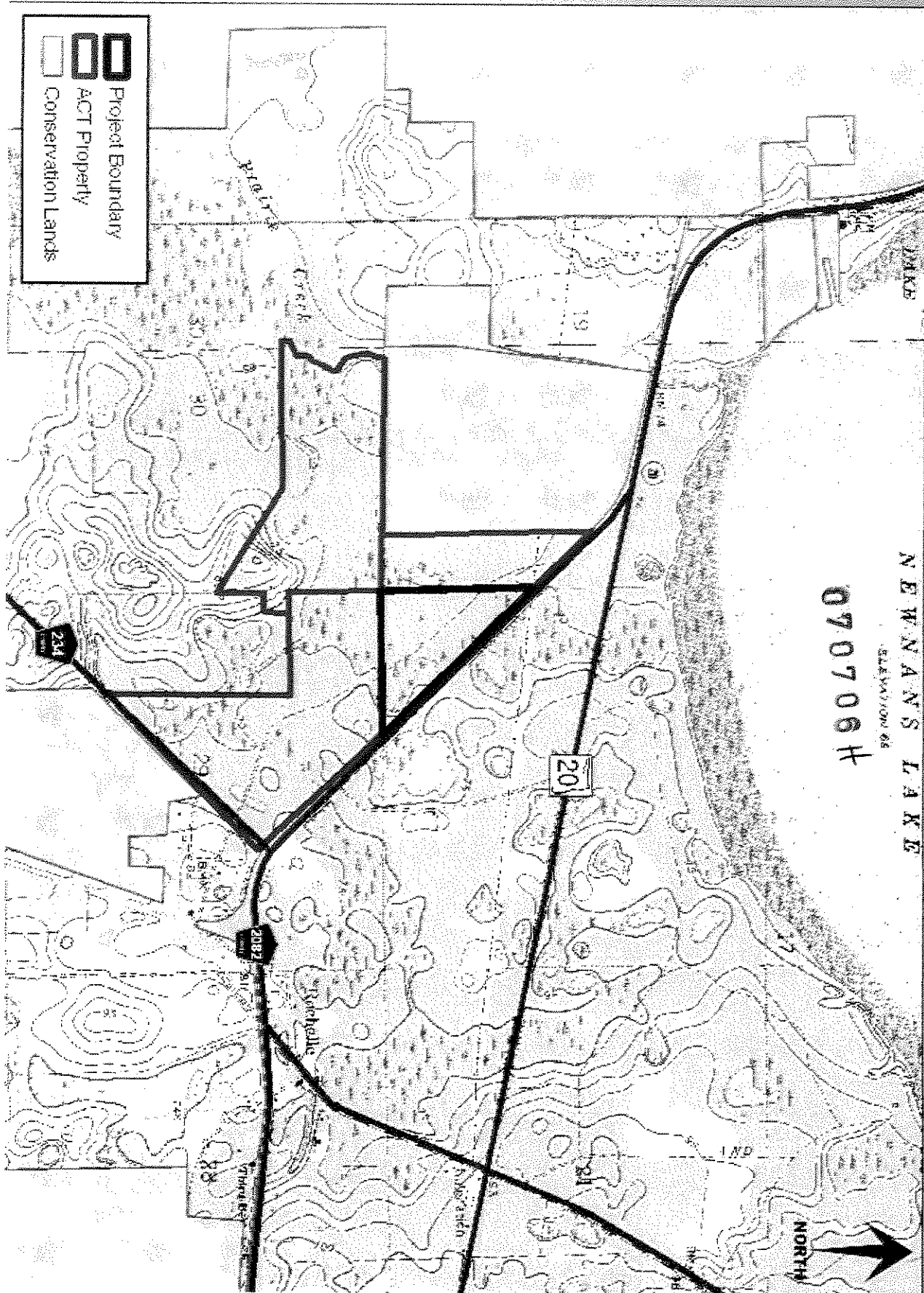
# Mitigation

- Prairie Creek Basin
- Part of the SJRWMD Orange Creek Basin Project
- Upper Ocklawaha River Drainage Basin

NEWMAN'S LAKE

ELEVATION 66

070706H







070708 H

# Mitigation

## Alachua Conservation Trust

- **Prairie Creek Basin Management**
  - Phase 1, 318.13 ac
  - Proposed Expansion, 231 ac
    - Holloway Land, 180 ac
    - Kate's Fish Camp, 2 ac
    - ***Zetrouer Land, 49 ac (this plan)***

070706H

# Mitigation

## Natural Communities Management

- Preservation
- Fire
- Thinning Silvicultural Land
- Replanting
- Control of Exotics and Invasives
- Hydrologic Restoration



# Mitigation Summary

- Based upon UMAM evaluation, the proposed mitigation offsets the impacts and provides better long-term ecological value for Alachua County



# Conclusions

1. Our impact is necessary for our plan, and impacts are not avoidable.



0707064

# Conclusions

2. Our impacts are to permittable wetlands which contribute minimal function to the area.



# Conclusions

3. Our mitigation plans offset the impacts based upon UMAM scores and provide greater long-term assurance of maintaining wetland function



0707064

# Conclusions

4. City ordinance allows development after proper consideration

17