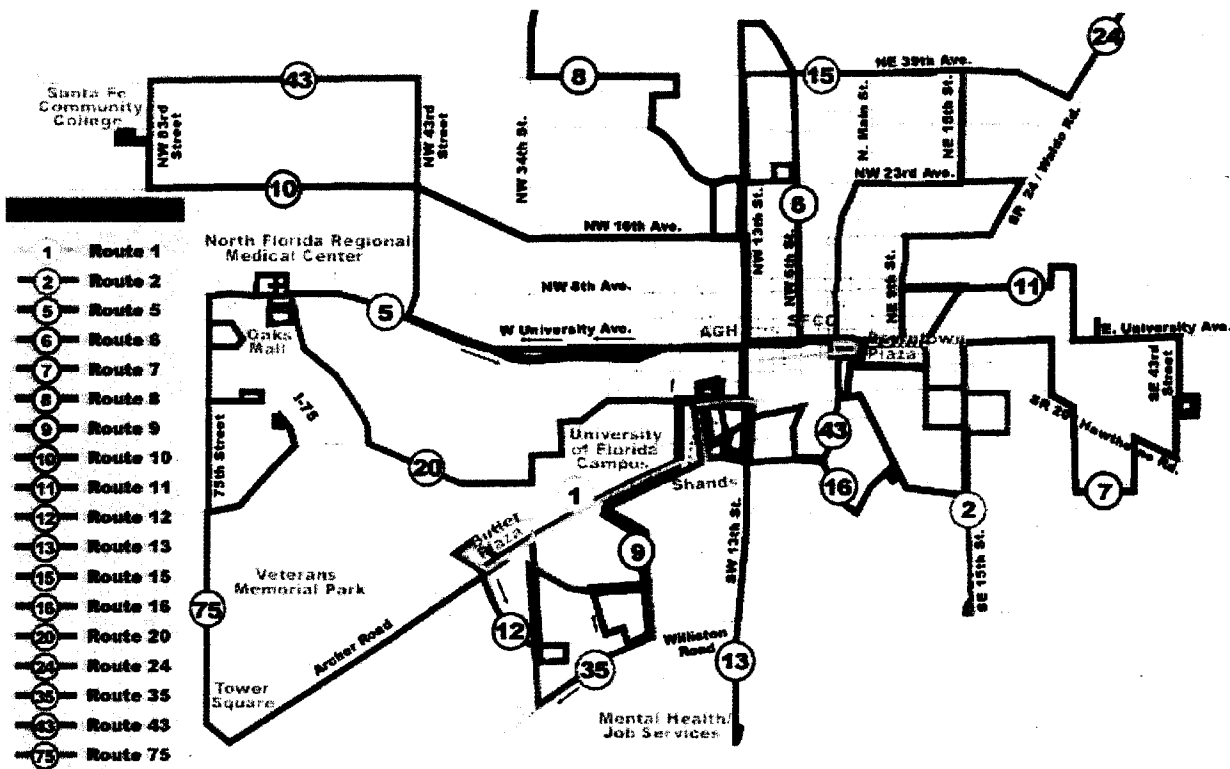


Services Division of the Public Works Department outlined in the "City of Gainesville Standards for Roadway Lighting".

Transportation

The City of Gainesville currently operates a public transportation system, the Gainesville Regional Transit System (RTS). There is a Park-and-Ride Lot located next to the Area. The next closest bus stop to the Area is at the intersection of SW 34<sup>th</sup> Street and Hull Road (Bus Route #34), about .5 miles distance. Upon annexation the Area would be eligible for subsidized paratransit services paid for by RTS

The Transportation Services Division is responsible for installation and maintenance of traffic signs and pavement markings on City streets and all parking meter operations and mechanical traffic counts for traffic studies. The Transportation Services Division is also responsible for traffic signal operations and construction inspection services for all of Alachua County and the other municipalities, under the annual City-County Traffic Engineering Services Agreement. The Area will receive the same services that are provided in the existing city limits upon the effective date of the annexation.



Planning and Zoning Services

The Department of Community Development will provide planning and development assistance to the Area. The Alachua County Comprehensive Plan and Zoning Code will continue to regulate land use and zoning for all development in the Area until the Gainesville Comprehensive Plan is amended and the Area is rezoned to City of Gainesville zoning categories. All requests for development are reviewed by City staff and the City

Plan Board or Development Review Board where appropriate. Following annexation, the City will undertake the necessary studies to amend the City Comprehensive Plan and zoning map to include the Area and will commence appropriate public hearings to complete such an amendment.

### Cultural Affairs

The Department of Cultural Affairs provides for cultural enlightenment through various programs in the arts, historical interpretation, special events and cultural programs in the County school system. The Area will receive the same services that are provided in the existing City limits upon annexation.

### Other Governmental Services

Other services currently provided to the residents within the existing City limits of Gainesville shall be extended to the Area, where necessary, on substantially the same basis and in the same manner as such services are provided within the rest of the municipality.

## **WATER AND WASTEWATER FACILITIES**

Gainesville Regional Utilities (GRU), owned and operated by the City of Gainesville, presently provides water and wastewater services to residents of the unincorporated area of Alachua County. Extension policies for serving new customers are the same in the City and in the proposed annexation Area.

### Financing the Extension of Water and Wastewater Facilities

GRU's existing water/wastewater extension policy is that new water and wastewater customers pay the fully allocated cost for the service they receive. This cost includes the cost of the treatment facilities required for service in the form of plant connection fees, and the cost of distribution or collection facilities in the form of transmission and distribution charges and/or collection system charges. Additionally, any developer requesting an extension pays a Contribution In Aid of Construction (CIAC) sufficient to ensure that GRU receives an appropriate rate of return on its portion of extension costs. This policy applies both in the City of Gainesville and the surrounding unincorporated area of Alachua County.

Actual facility construction is funded from either one or both of GRU's Construction Fund or the Utility Plant Improvement Fund (UPIF). The Construction Fund consists of proceeds from the issuance of revenue bonds. The UPIF is funded by operating revenue.

### Existing Major Trunk Water Mains and Proposed Extensions

In accordance with Section 13 (1) (a) of the Boundary Adjustment Act, Figure 3 shows existing major water mains in the City of Gainesville and the surrounding proposed annexation Area. Figure 4 shows water

distribution system projects in GRU's approved 2004 budget. The fiscal year in which each project is proposed for construction is also shown in Figure 4. Additional funding is included in GRU's budget for extending water facilities to meet the needs of new customers and whose location will depend on development. Project timing is based on projected growth within the GRU service area. Actual construction times of the projects shown in Figure 4 may vary based on the actual rate or location of growth within the service area.

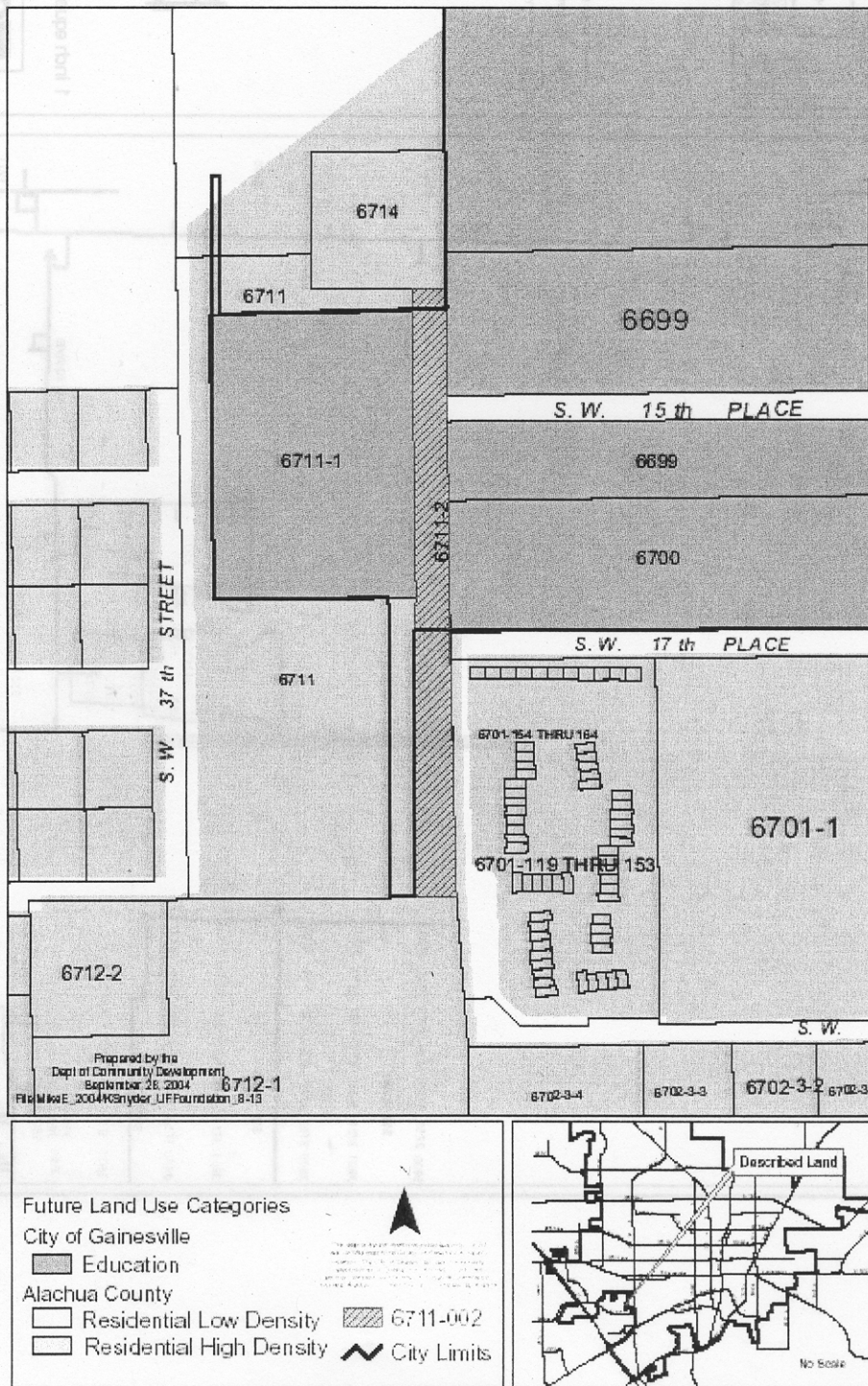
### Existing Wastewater Collection System and Proposed Extensions

In accordance with Section 13 (1) (a), Figure 5 shows the existing major wastewater collection system in the City of Gainesville and the Area. Figure 6 shows wastewater collection system projects in GRU's approved 2004 budget. The fiscal year in which each project is proposed for construction is also shown in Figure 6. Additional funding is included in GRU's budget for extending wastewater facilities, to meet the needs of new customers and whose location will depend upon development. Project timing is based on projected growth within the GRU service area. Actual construction times may vary as a result of service being required either earlier or later than originally anticipated.





**Figure 2: General Land Use of Parcel No. 06712-000-000**



**FIGURE 3 – MAJOR WATER MAINS**

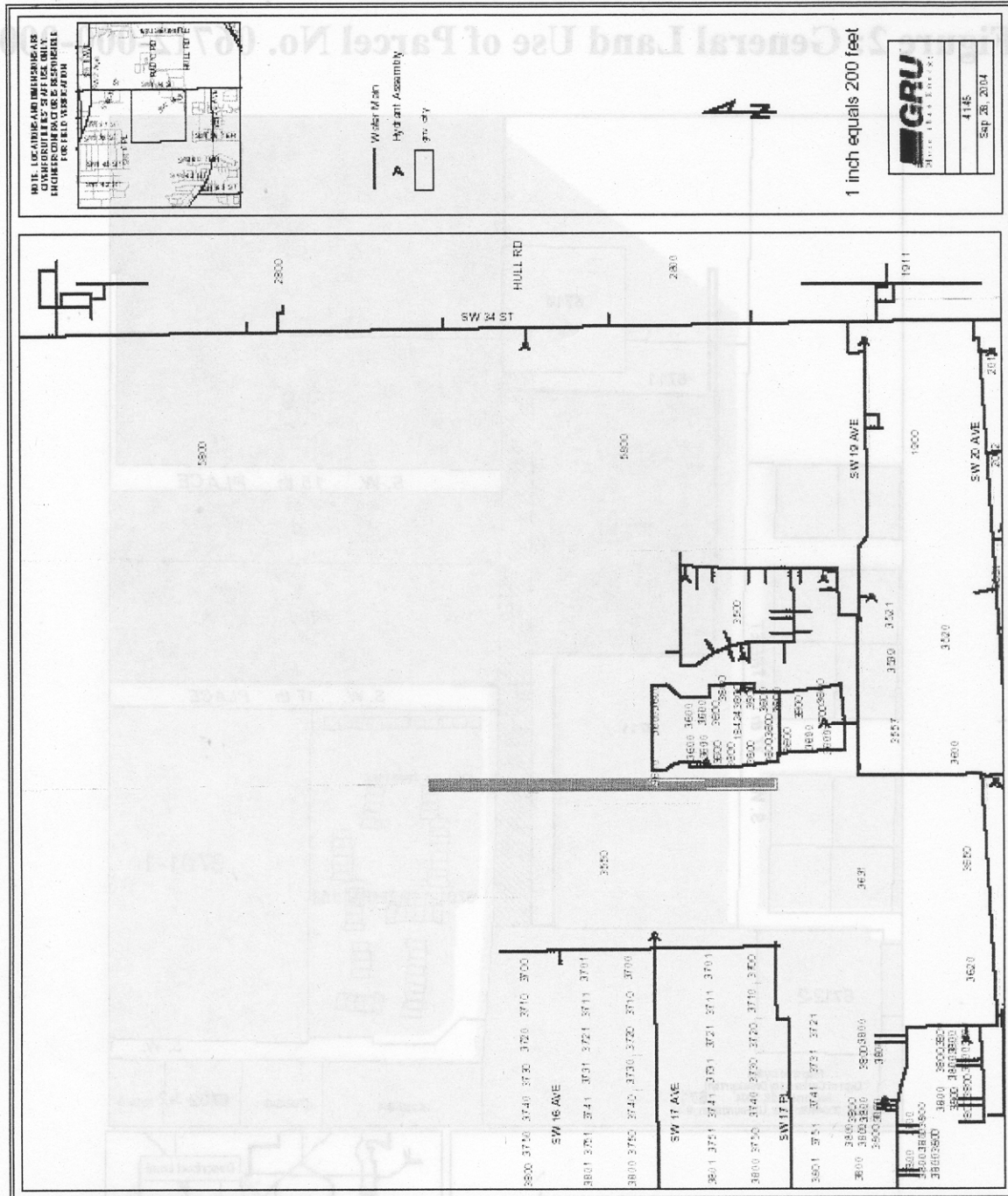
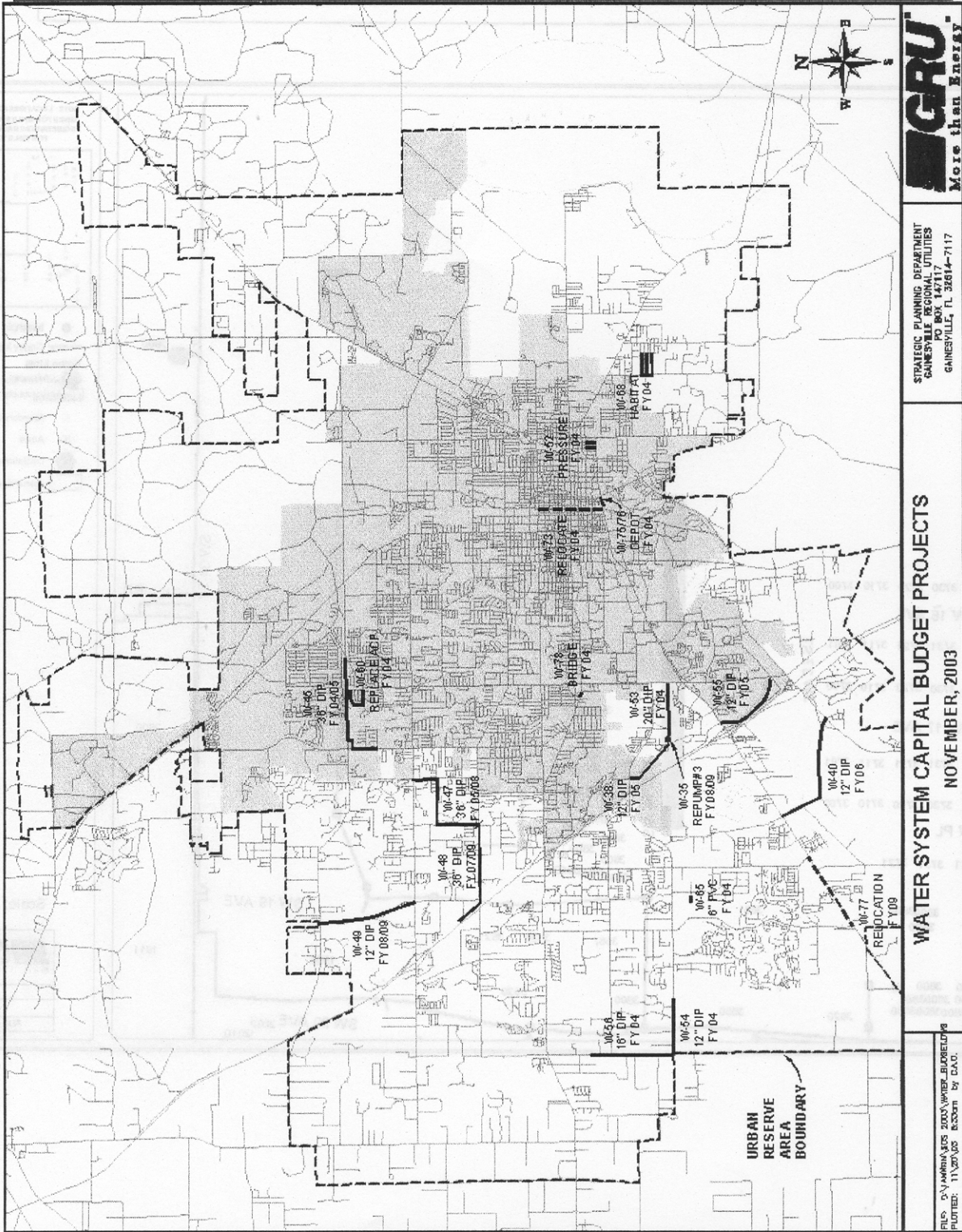




FIGURE 4 – MAJOR WATER SYSTEM PROJECTS



STRATEGIC PLANNING DEPARTMENT  
 GAINESVILLE REGIONAL UTILITIES  
 PO BOX 142717  
 GAINESVILLE, FL 32614-7117

WATER SYSTEM CAPITAL BUDGET PROJECTS  
 NOVEMBER, 2003

FILES: D:\WORK\BUDGETS\2003\WATER\_BUDGET0309  
 PLOTTED: 11/20/03 8:30am by D.A.O.

**FIGURE 5 – WASTEWATER COLLECTION SYSTEM**

