

LEGISLATIVE #

110147 I

JACK'S BAR

Petition No DB-11-38 SPA



ENG, DENMAN & ASSOCIATES

ENGINEERS * SURVEYORS * PLANNERS



Registrar 110147 I



ENG, DENMAN & ASSOCIATES

ENGINEERS * SURVEYORS * PLANNERS



COMPLIANCE WITH APPLICABLE ZONING AND CODE SECTIONS

Central City District (CCD) Zoning (Sec. 30-66)

- **Permits Alcoholic Beverage Establishments**
- **No specified limits on outdoor seating**
- **No prohibition of live music**
- **Project will comply with lighting and noise ordinance**

Specially Regulated Uses (Alcoholic Beverage Establishments)

- **Sec. 30-105**
- **Project meets required standards**

Traditional City Overlay & Community Redevelopment District

- **Project meets the applicable standards, design criteria and permitted uses**



ENG, DENMAN & ASSOCIATES

ENGINEERS * SURVEYORS * PLANNERS

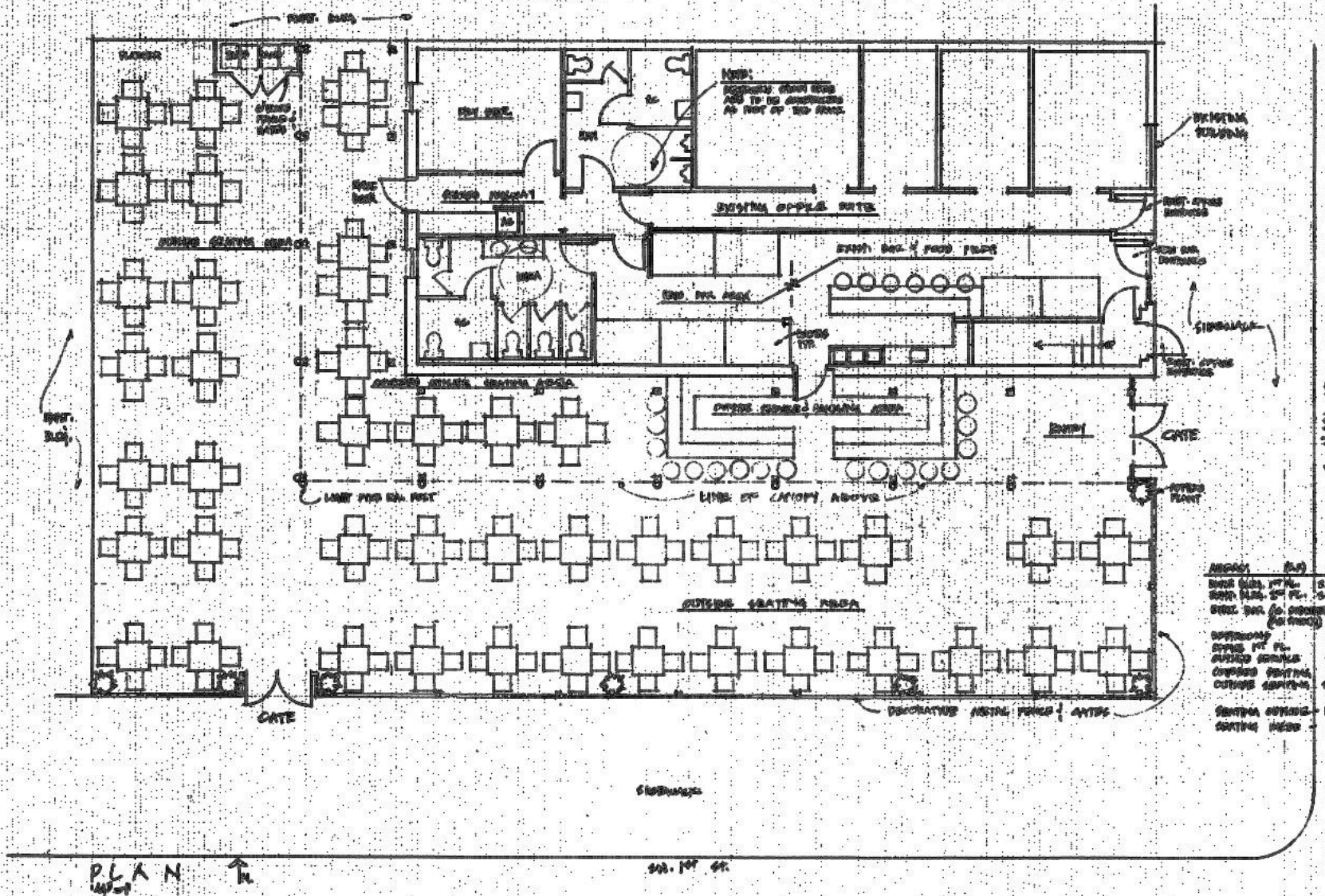




ENG, DENMAN & ASSOCIATES

ENGINEERS * SURVEYORS * PLANNERS

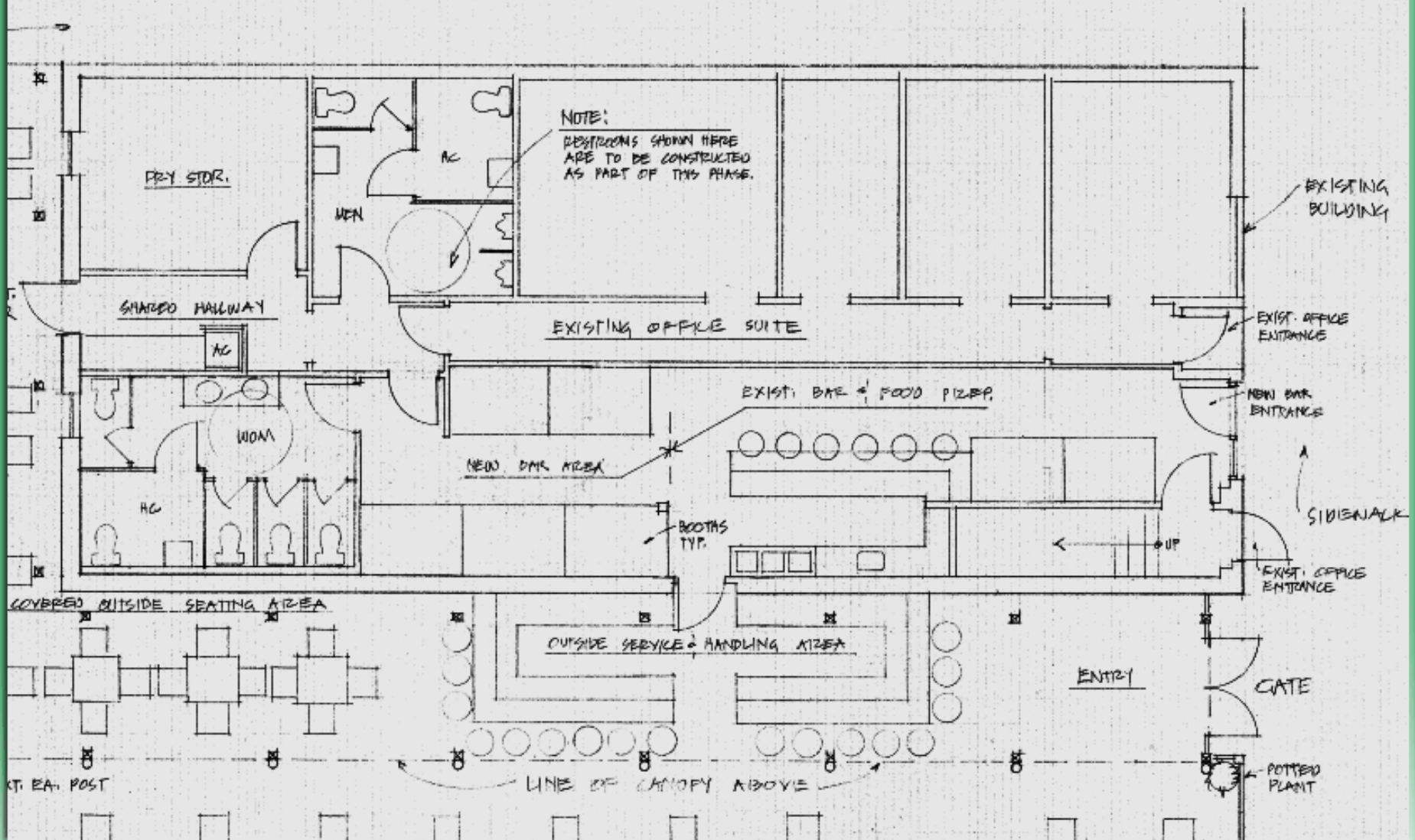




AREA	(S.F.)
REST. OFF. 17' x 11'	187
REST. OFF. 20' x 11'	220
REST. OFF. (2) 10' x 10'	200
STAIRS	100
OUTSIDE SEATING	170
INSIDE SEATING	130
TOTAL	1007

JACK'S BAR
 21 SOUTH MAIN STREET
 GAINESVILLE, FLORIDA
 Andrew Kaplan, architect
 A-1

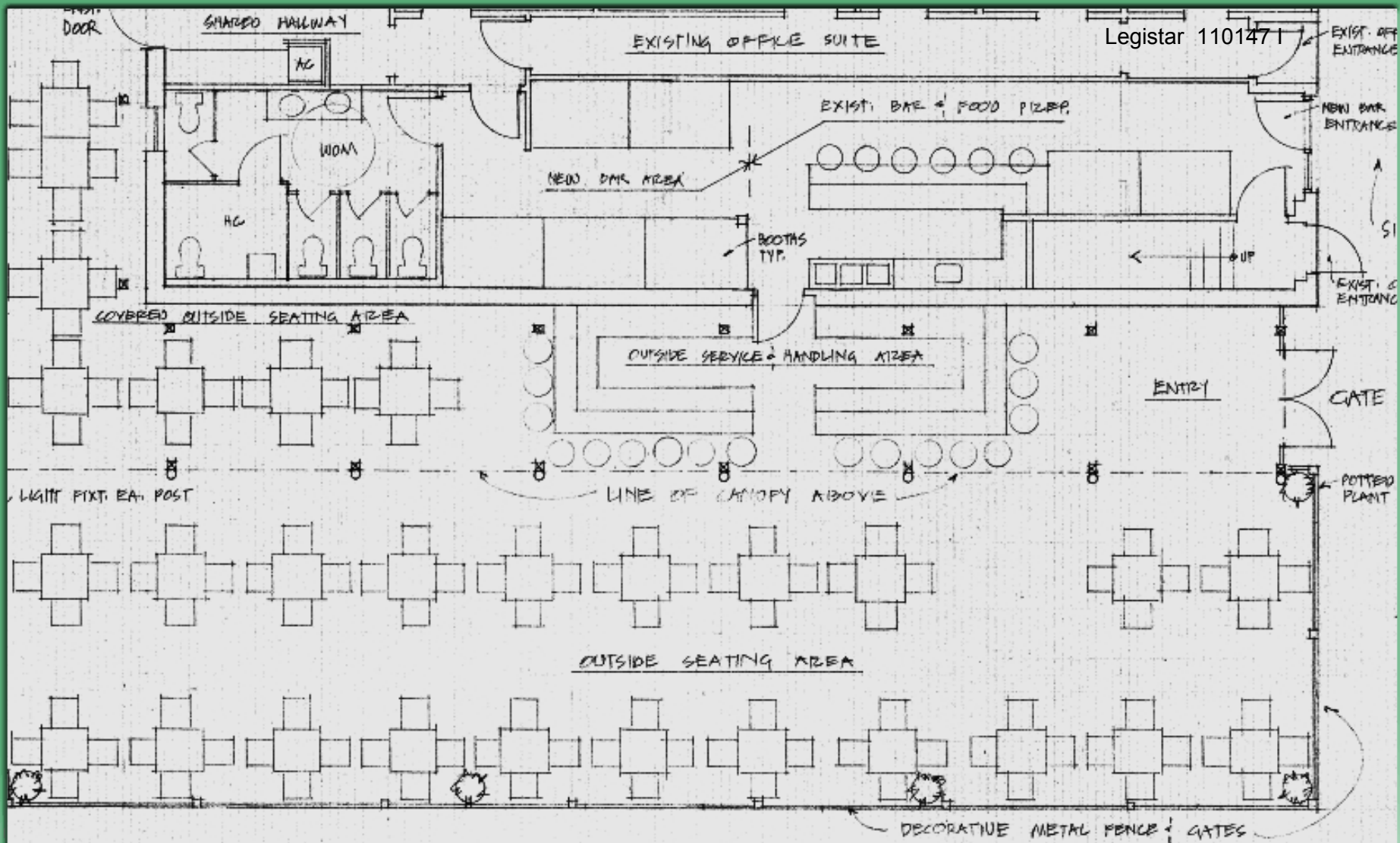




ENG, DENMAN & ASSOCIATES

ENGINEERS * SURVEYORS * PLANNERS



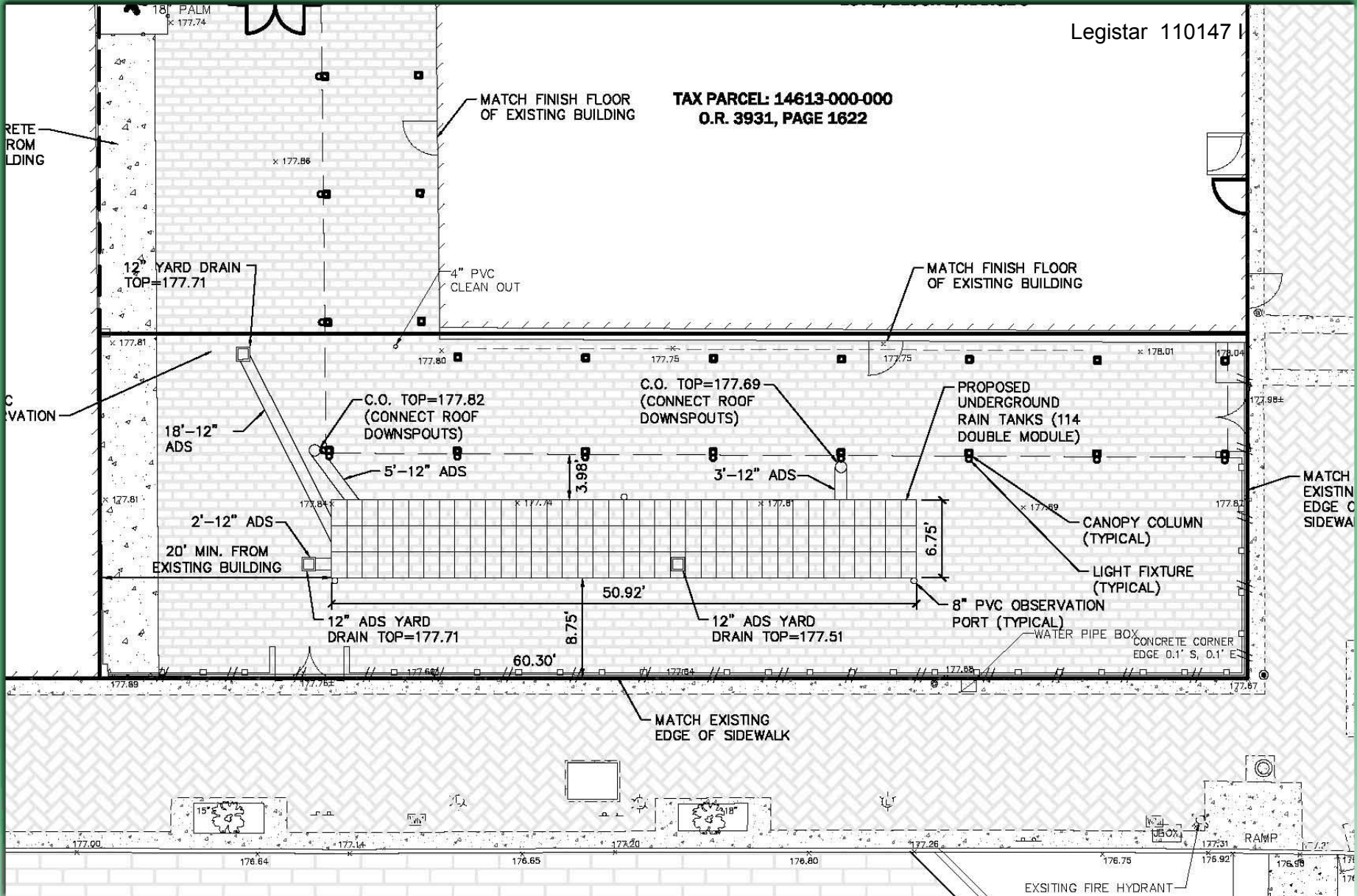


ENG, DENMAN & ASSOCIATES

ENGINEERS * SURVEYORS * PLANNERS



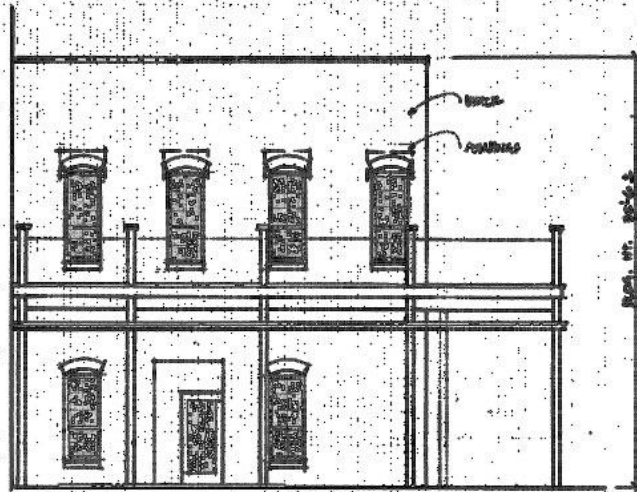
TAX PARCEL: 14613-000-000
O.R. 3931, PAGE 1622



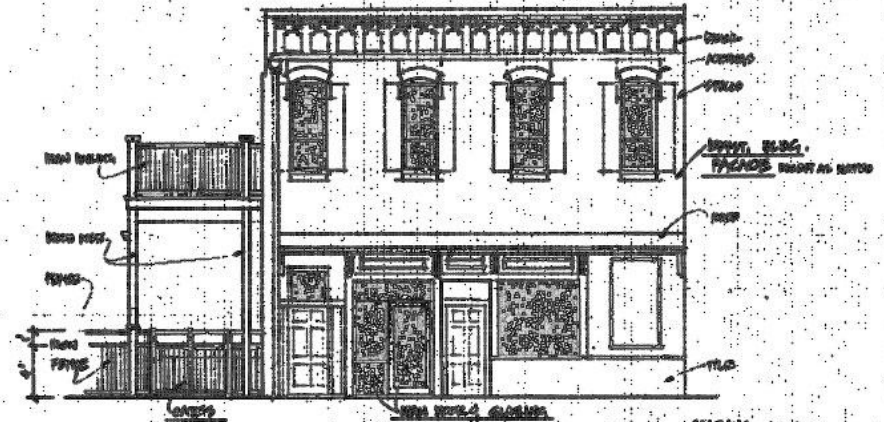
ENG, DENMAN & ASSOCIATES

ENGINEERS * SURVEYORS * PLANNERS



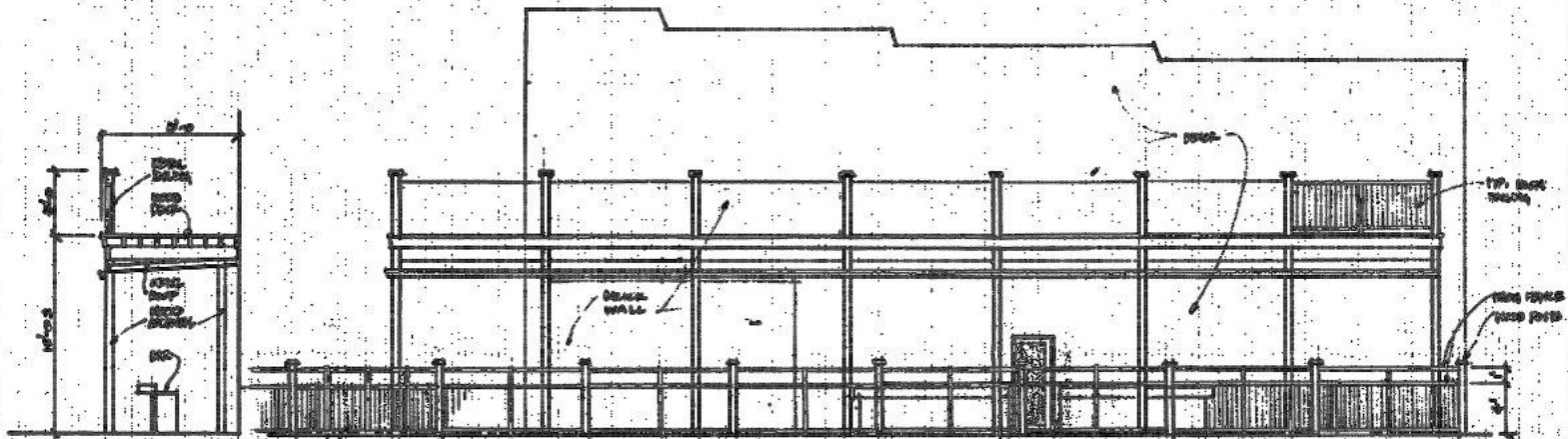


WEST ELEVATION
1/2" = 1'



EAST ELEVATION
1/2" = 1'

SECTION 2/24
 AREA OF TERRACE 1 to 2
 = 170 sq. ft.
 AREA OF GLAZING 1 to 2
 = 25' x 8'
 = 200'



SECTION
1/2" = 1'

SOUTH ELEVATION
1/2" = 1'

ENG, DENMAN & ASSOCIATES

ENGINEERS * SURVEYORS * PLANNERS



Andrew Kaplan, architect



ENG, DENMAN & ASSOCIATES

ENGINEERS * SURVEYORS * PLANNERS

