

Update:

Tree Ordinance Stakeholder Committee Recommendations

General Policy Meeting: 5/10/2018
Presentation by: Lila Stewart



DEPT
OF
DOING

Gainesville.
Citizen centered
People empowered

160349A

Re-Cap



2016: General Policy Committee directed staff to form a diverse stakeholder committee to make recommendations for quick changes to the tree ordinance.



2017: Tree Ordinance Stakeholder Committee presented recommendations to the General Policy Committee.



2017: Tree Ordinance Stakeholder Committee presents concise, prioritized recommendations, all of which had a consensus of the Committee.

160349A



Re-Cap



Gainesville.
Citizen centered
People empowered

Tree Ordinance Stakeholder Committee Recommendations

IDEA	SUMMARY	HOW
	Modification of parcel requirements Allow flexibility in Land Development Code (LDC) lot & height limits to preserve heritage trees.	Modify the LDC to allow: modification of street, yard and lot size. Yard setback, and layout requirements to allow preservation of high quality Heritage Tree(s).
	Inch for inch replacement for affordable housing properties Tree replacement in lieu of fee for developments where 25% or more of the units are affordable housing.	Modify the LDC to provide an opportunity for developers to not pay a mitigation fee, instead, provide inch for inch replacement on site. Minimum size requirements for new trees applies to new construction only.
	Tree maintenance on public property Use a percentage (10%) of mitigation fees to maintain and preserve existing tree canopy.	Modify Tree Ordinance to allow fund expenditure.
	Urban Forest Ecological Assessment A dedicated funding source would ensure continued assessment (5 year intervals) of efficacy of tree ordinance.	Modify Tree Ordinance to allow fund expenditure.
	Urban Forest Management Plan Plan creates the road map for the future of the city's trees. A dedicated funding source would ensure plans are reviewed, updated (10 yr intervals) and implemented consistently.	Modify Tree Ordinance to allow fund expenditure.
	Purchase of land for street tree planting Use funds for acquisition of lands or easements to plant and maintain street trees.	Modify Tree Ordinance to allow fund expenditure.
	Tree Planting Rebates Encourage planting of trees by giving rebate to home owner or tree give away.	Modify Tree Ordinance to allow fund expenditure.
	Two for one rather than inch for inch replacement of non high quality Heritage Trees	Amend the LDC to allow this practice.

1

Tree Ordinance Stakeholder Committee Recommendations

IDEA	SUMMARY	HOW
	Density Bonus Credit Preserve Heritage Trees by allowing denser development in non-single family zone districts (both horizontally and vertically).	Amend LDC to allow the Density Bonus Point System to allow an increase in density for the preservation of High Quality Heritage Trees in areas outside the urban core.
	Removal of invasive species on public property & right-of-way Use mitigation funds for the removal of invasive species on public property and in the right-of-way.	Amend Tree Ordinance to allow fund expenditure.
	Replacement Tree planting for removal of Non-High Quality Trees Propose that mitigation funds be used to replant trees on private property when property owners remove non high quality heritage trees.	Amend tree ordinance to allow fund expenditure.
	Cap on mitigation fees as a percent of assessed property value Cap the mitigation fee as a percent of the assessed property value.	Amend Tree Ordinance to set a maximum percent of property value.
	Maximum mitigation fee per acre Cap the mitigation fee at a certain dollar amount per acre.	Amend Tree Ordinance to set maximum fee/ acre.
	Reduction in stormwater basin volume requirements Recognize the role trees play in mitigating rate and volume of run-off.	Amend the Public Works Design manual to allow for flexibility in stormwater basin volume requirements.
	Graduated scale for mitigation fees Adjust the cap for mitigation to encourage development in dense urban areas.	Amend Tree Ordinance to allow cap for mitigation fees in urban core.
	Invasive tree removal on private property & replanting of shade trees Use mitigation funds for the removal of invasive plants on private property and the replanting of shade trees on property.	Amend Tree Ordinance to allow fund expenditure.

2

*The committee reached a consensus on all listed ideas. Ideas are listed in order of priority, with top being the highest.

Quick Hits Implementation

- ✓ **January 25th:** Plan Board presentation and discussion
- ✓ **February 12th:** Tree Advisory Committee presentation
- ✓ **Currently:** Drafting with the City Attorney and DoD
- **June 2018:** Plan Board public hearings
- **July/August:** City Commission hearings

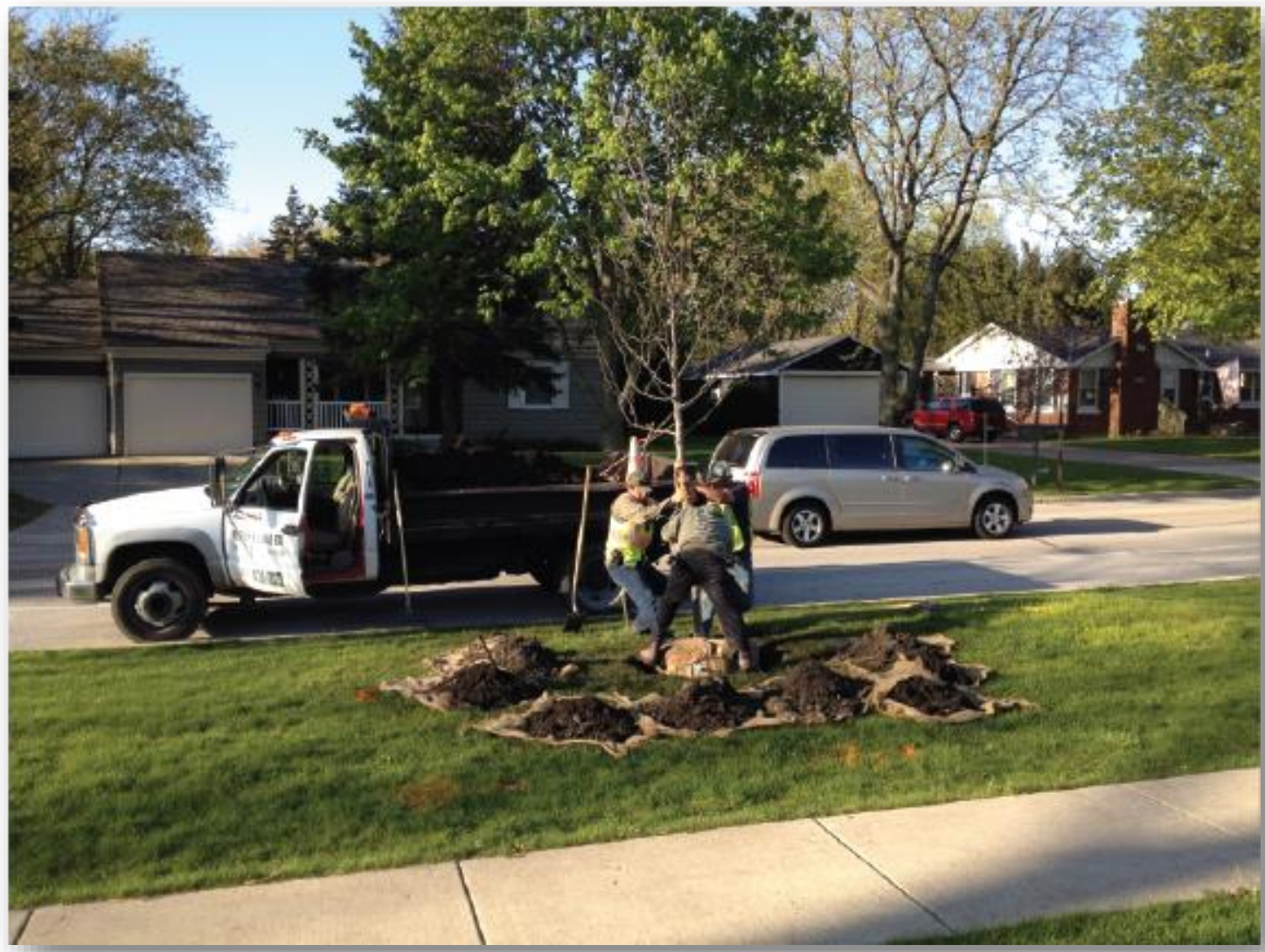


Gainesville.
Citizen centered
People empowered



160349A

Replacement tree planting for removal of non-high quality trees



Gainesville.
Citizen centered
People empowered

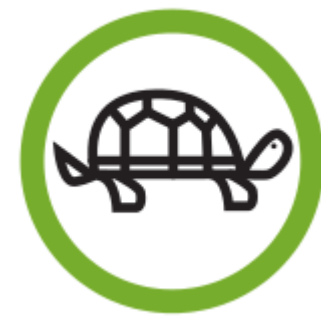


160349A

Invasive tree removal on private property & replanting of shade trees

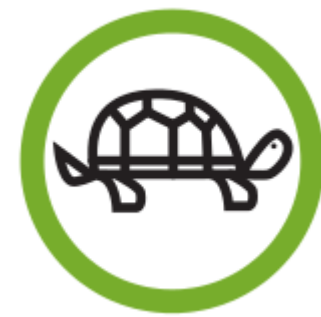


Gainesville. Citizen centered People empowered



160349A

Reduction in stormwater basin volume requirements



160349A

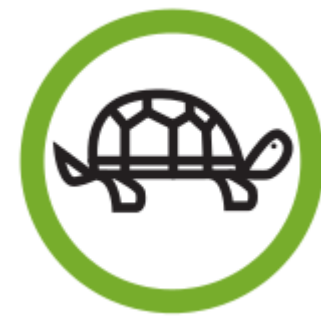
Cap on mitigation fees as a percent of assessed property value

AD VALOREM TAXES				
TAXING AUTHORITY	MILLAGE RATE	ASSESSED VALUE	EXEMPTION(S)	TA
BOARD OF COUNTY COMMISSIONERS				
CNTY GENERAL	8.9290	218,840	50,000	
ALACHUA CNTY LIBRARY DISTRICT				
LIBRARY BONDS	0.0750	218,840	50,000	
LIBRARY GENERAL	1.3371	218,840	50,000	
SCHOOL BOARD OF ALACHUA COUNTY				
SCHL CAP32 PROJECT (S01)	1.7000	218,840	25,000	
SCHL DISCRNRY & CM (S01)	0.7000	218,840	25,000	
SCHL GENERAL	4.6000	218,840	25,000	
SCHOOL VOTED (S01)	1.0000	218,840	25,000	
SUWANNEE RIVER WATER DIST	0.4000	218,840	50,000	
37 CITY OF GAINESVILLE	4.0000	218,840	50,000	
TOTAL MILLAGE	23.1943			AD VALOREM TAXES

\$0%

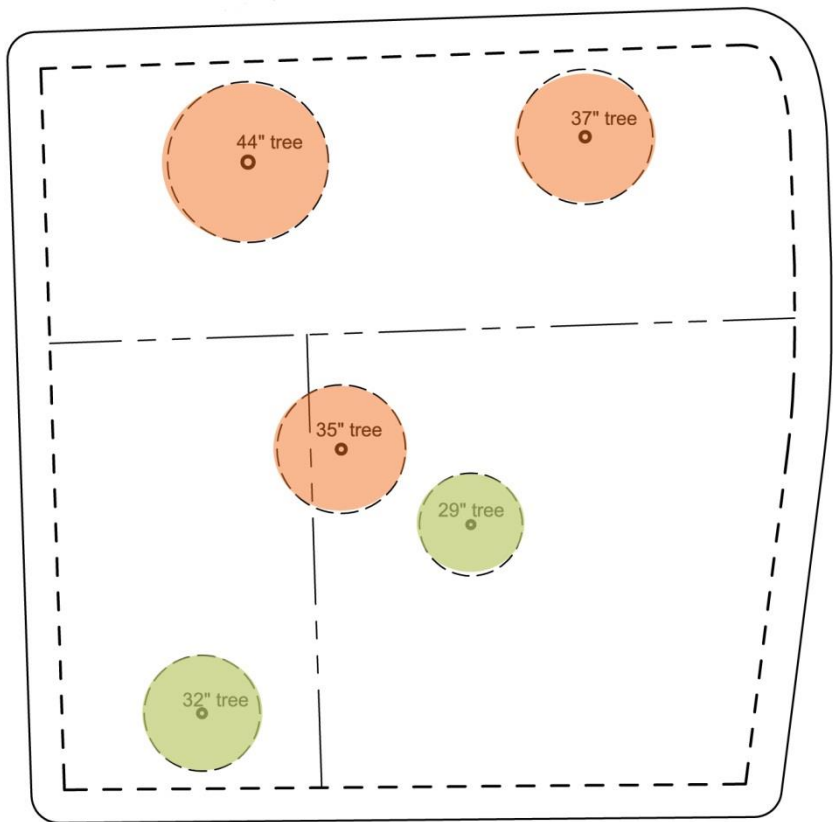


Gainesville. Citizen centered People empowered

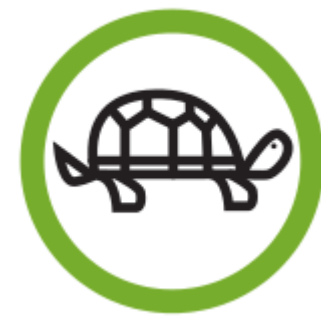


160349A

Maximum mitigation fee per acre



Gainesville.
 Citizen centered
 People empowered

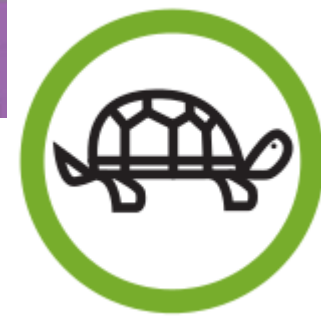


160349A

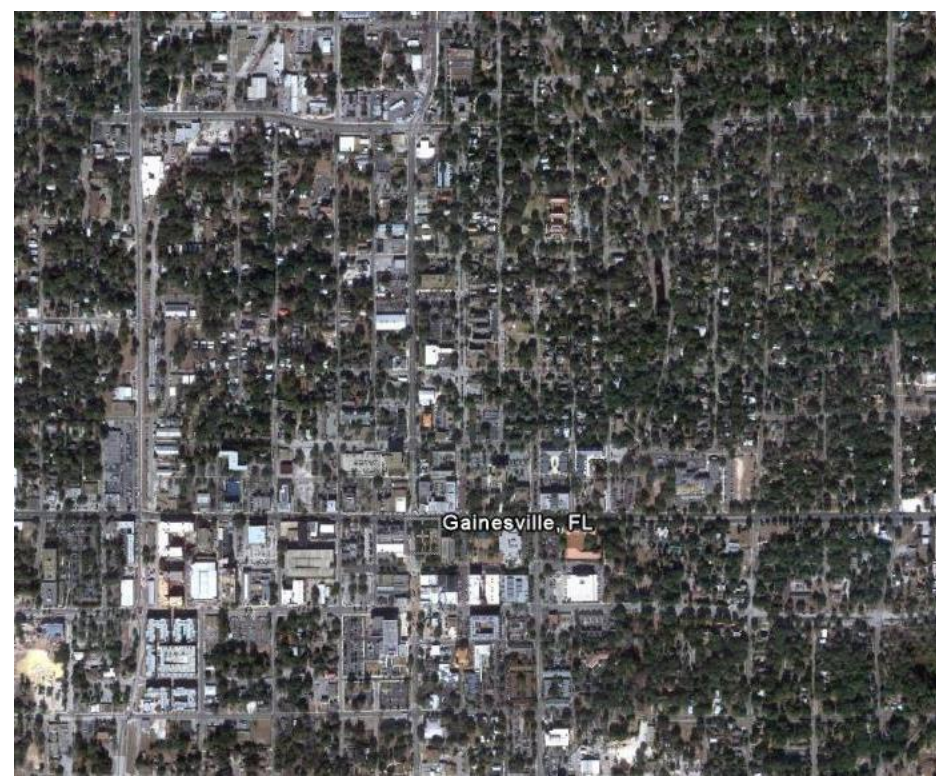
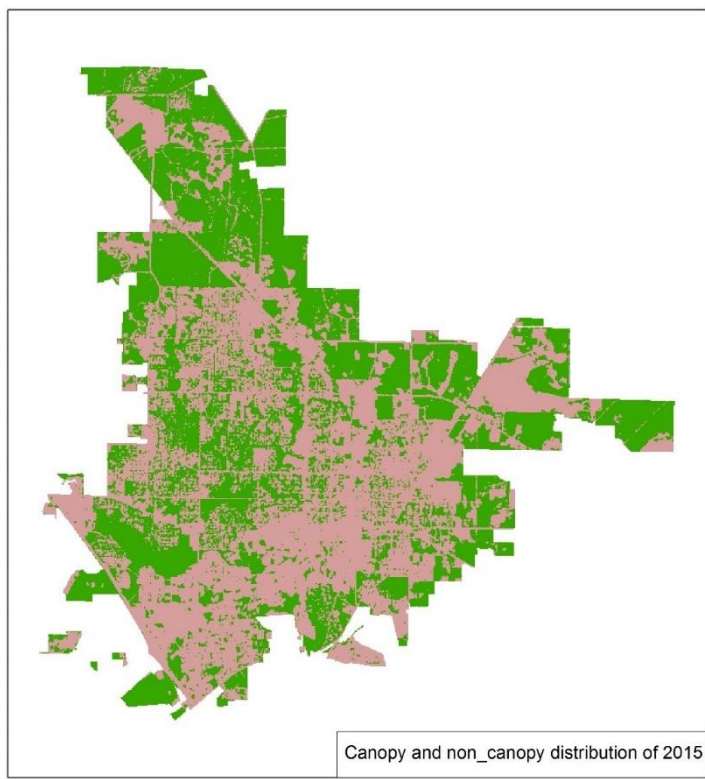
Graduated scale for mitigation fees



Gainesville.
 Citizen centered
 People empowered



Urban Forest Ecological Assessment & Management Plan



Gainesville.
 Citizen centered
 People empowered



Recommendation



- Provide policy guidance on the long-range items discussed.
- Remove this item from the GPC referral list.

160349A

Questions?

