



Magnolia Parke Planned Development Amendment

City Commission
First Reading

July 17, 2014



CAUSSEAU, HEWETT, & WALPOLE, INC.

Civil **Engineering** Land **Surveying** Land **Planning** Construction Engineering **Inspection**

Public Notification



Focused on Excellence
Delivered with Integrity

MEMORANDUM

TO: Neighbors of the Magnolia Parke Planned Development PN 13-0128
FROM: Craig Brashier, AICP, Planning Project Manager
DATE: March 25, 2013
RE: Neighborhood Workshop Public Notice

Causseaux, Hewett, & Walpole, Inc. (CHW) will be holding a Neighborhood Workshop to discuss a proposed amendment to the City's Zoning Map revising the existing Magnolia Parke Planned Development (PD) located on approximately 30 acres in the northeast quadrant of the NW 39th Avenue / NW 51st Street intersection.

Date: Tuesday, April 9, 2013

Time: 6:00 p.m.

Place: Alachua County Library – Millhopper Branch
 Meeting Room B
 3145 NW 43rd Street
 Gainesville, Florida 32606.

Contact: Craig Brashier, AICP
 (352) 331-1976

This is not a public hearing. The purpose of the workshop is to inform neighboring property owners of the proposal's nature and to seek comments. We look forward to seeing you at the workshop.

I:\JOBS\2013\13-0128\NHWS\Mailout_130325_Magnolia Parke PD.docx

www.gainesville.com

Gov. Scott shuts down office after lieutenant governor's resignation

The Associated Press
 TALLAHASSEE — Florida Gov. Rick Scott is shutting down the lieutenant governor's office for now. Former Lt. Gov. Jennifer Carroll resigned earlier this month after she was interviewed as part of an ongoing investigation into an alleged widespread gambling ring. She has not been accused of any wrongdoing.

But part of the fallout is the decision to shutter the office until a successor is named, putting the four employees who remained out of work.

Officials show that orders have already gone out to pack up the office and return state-owned computers. Some employees are already circulating resumes.

A spokeswoman for Scott said the decision was made to save money over the next few months until a new lieutenant governor is appointed.

Scott has repeatedly said that he will not focus on finding a replacement until after the annual legislative session ends in early May.

Melissa Sellers also said that the decision to shut down the office is recognition that the new lieutenant governor would determine whom to hire.

The Scott administration says it will try to find "other opportunities" for the departing employees "to serve as state government where their experience and background make them a good fit."

The lieutenant governor's office budget is nearly \$10 million, according to Scott's budget office. That includes the nearly \$125,000 annual salary paid to the lieutenant governor, Carroll's chief of staff — John Kautler — has an annual salary of \$100,000.

Carroll abruptly resigned after authorities questioned her after consulting work she did for Allied Veterans of the World before she was elected lieutenant governor. Allied is a nonprofit of running a \$290 million gambling business that received most of the proceeds into its owners' pockets. Nearly 60 people have been arrested so far.

The scandal led Florida lawmakers to vote to amend legislation to ban the storefront operation by putting an internet cafe that was operated by Allied and its affiliates.

Florida politicians and the state's political parties are also rushing to return money that they received from Allied and they play roles in the scandal.

Both Scott and the Republican Party of Florida have already announced plans to donate money to charity that equals the amount received from those associated with the scandal.

Florida Democrats on Monday handed out checks to several veteran groups located in Broward and Palm Beach counties. They say that they've identified that Allied and its associates donated \$72,000 to Democratic campaigns.

Sen. Chris Smith, D-Fort Lauderdale, called the allegations "unfair" and said Democrats would not have accepted any money if they had known about Allied activities.

Democrats handed out checks to two American Legion posts, two Veterans of Foreign Wars posts and a Jewish War Veterans post.

THE MIAMI HERALD
 MIAMI — Former Miami Police Sgt. Raul Iglecias will serve four years in federal prison after his conviction for stealing drugs from traffickers, planting cocaine on suspects and lying to federal agents. He will surrender to begin his sentence on April 26.

In January a jury convicted Iglecias, 40, of two counts of civil rights violations, along with conspiracy to possess and possession with the intent to distribute cocaine and crack cocaine.

Jurors also found him guilty of obstruction of justice and making false official statements. U.S. District Judge Cecilia Althaus on Friday also sentenced Iglecias to an additional three years of supervised release.

A second indictment, Roberto Asanza, pleaded guilty to misdemeanor drug charges stemming from the same investigation. During a tense trial, attended by his supporters — members of Miami's police union — Asanza testified against Iglecias, as did four detectives who worked on the Crime Suppression Team.

Federal prosecutors painted Iglecias, a former U.S. Marine, as a rogue sergeant who over the course of five months in 2010 planted cocaine on a suspect, stole drugs and money from a police officer, and led about a \$1 million case as part of an FBI sting.

According to court documents, Iglecias had faced a recommended sentence of up to six years. Prosecutors wanted a stiff sentence, saying Iglecias refused to take responsibility for his actions, including the "repeated" campaign against those who testified against him.

Jurors also found him guilty of obstruction of justice and making false official statements. U.S. District Judge Cecilia Althaus on Friday also sentenced Iglecias to an additional three years of supervised release.

A second indictment, Roberto Asanza, pleaded guilty to misdemeanor drug charges stemming from the same investigation. During a tense trial, attended by his supporters — members of Miami's police union — Asanza testified against Iglecias, as did four detectives who worked on the Crime Suppression Team.

Federal prosecutors painted Iglecias, a former

Public Notice

A Neighborhood Workshop will be held to discuss a proposed amendment to the City's Zoning Map revising the existing Magnolia Parke Planned Development (PD) located on approximately 30 acres in the northeast quadrant of the NW 39th Avenue / NW 51st Street intersection.

This is not a public hearing. The workshop's purpose is to inform neighboring property owners of the proposal's nature and to seek their comments.

The workshop is Tuesday, April 9, 2013 at 6:00 p.m. at the Alachua County Library – Millhopper Branch, Meeting Room B, 3145 NW 43rd Street, Gainesville, Florida 32606.

Contact:
 Craig Brashier, AICP
 Phone Number: (352) 331-1976

CHW

Notice of Referendum Election on Annexation by the City of Gainesville

NOTICE IS given that a referendum election will be held on Tuesday, April 9, 2013 from 7:00AM – 7:00PM for the purpose of submitting the annexation of the Area shown below, proposed by Ordinance No. 12807 to a vote of the registered electors who reside in the Area proposed to be annexed as described and shown on the map.

Map 1: NW Annexation Area 1 As Described In Ordinance 12807

Map 2: NW Annexation Area 2 As Described In Ordinance 12807

Map 3: NW Annexation Area 3 As Described In Ordinance 12807

Map 4: NW Annexation Area 4 As Described In Ordinance 12807

Map 5: NW Annexation Area 5 As Described In Ordinance 12807

Map 6: NW Annexation Area 6 As Described In Ordinance 12807

Map 7: NW Annexation Area 7 As Described In Ordinance 12807

Map 8: NW Annexation Area 8 As Described In Ordinance 12807

Map 9: NW Annexation Area 9 As Described In Ordinance 12807

Map 10: NW Annexation Area 10 As Described In Ordinance 12807

Map 11: NW Annexation Area 11 As Described In Ordinance 12807

Map 12: NW Annexation Area 12 As Described In Ordinance 12807

Map 13: NW Annexation Area 13 As Described In Ordinance 12807

Map 14: NW Annexation Area 14 As Described In Ordinance 12807

Map 15: NW Annexation Area 15 As Described In Ordinance 12807

Map 16: NW Annexation Area 16 As Described In Ordinance 12807

Map 17: NW Annexation Area 17 As Described In Ordinance 12807

Map 18: NW Annexation Area 18 As Described In Ordinance 12807

Map 19: NW Annexation Area 19 As Described In Ordinance 12807

Map 20: NW Annexation Area 20 As Described In Ordinance 12807

Map 21: NW Annexation Area 21 As Described In Ordinance 12807

Map 22: NW Annexation Area 22 As Described In Ordinance 12807

Map 23: NW Annexation Area 23 As Described In Ordinance 12807

Map 24: NW Annexation Area 24 As Described In Ordinance 12807

Map 25: NW Annexation Area 25 As Described In Ordinance 12807

Map 26: NW Annexation Area 26 As Described In Ordinance 12807

Map 27: NW Annexation Area 27 As Described In Ordinance 12807

Map 28: NW Annexation Area 28 As Described In Ordinance 12807

Map 29: NW Annexation Area 29 As Described In Ordinance 12807

Map 30: NW Annexation Area 30 As Described In Ordinance 12807

Map 31: NW Annexation Area 31 As Described In Ordinance 12807

Map 32: NW Annexation Area 32 As Described In Ordinance 12807

Map 33: NW Annexation Area 33 As Described In Ordinance 12807

Map 34: NW Annexation Area 34 As Described In Ordinance 12807

Map 35: NW Annexation Area 35 As Described In Ordinance 12807

Map 36: NW Annexation Area 36 As Described In Ordinance 12807

Map 37: NW Annexation Area 37 As Described In Ordinance 12807

Map 38: NW Annexation Area 38 As Described In Ordinance 12807

Map 39: NW Annexation Area 39 As Described In Ordinance 12807

Map 40: NW Annexation Area 40 As Described In Ordinance 12807

Map 41: NW Annexation Area 41 As Described In Ordinance 12807

Map 42: NW Annexation Area 42 As Described In Ordinance 12807

Map 43: NW Annexation Area 43 As Described In Ordinance 12807

Map 44: NW Annexation Area 44 As Described In Ordinance 12807

Map 45: NW Annexation Area 45 As Described In Ordinance 12807

Map 46: NW Annexation Area 46 As Described In Ordinance 12807

Map 47: NW Annexation Area 47 As Described In Ordinance 12807

Map 48: NW Annexation Area 48 As Described In Ordinance 12807

Map 49: NW Annexation Area 49 As Described In Ordinance 12807

Map 50: NW Annexation Area 50 As Described In Ordinance 12807

Map 51: NW Annexation Area 51 As Described In Ordinance 12807

Map 52: NW Annexation Area 52 As Described In Ordinance 12807

Map 53: NW Annexation Area 53 As Described In Ordinance 12807

Map 54: NW Annexation Area 54 As Described In Ordinance 12807

Map 55: NW Annexation Area 55 As Described In Ordinance 12807

Map 56: NW Annexation Area 56 As Described In Ordinance 12807

Map 57: NW Annexation Area 57 As Described In Ordinance 12807

Map 58: NW Annexation Area 58 As Described In Ordinance 12807

Map 59: NW Annexation Area 59 As Described In Ordinance 12807

Map 60: NW Annexation Area 60 As Described In Ordinance 12807

Map 61: NW Annexation Area 61 As Described In Ordinance 12807

Map 62: NW Annexation Area 62 As Described In Ordinance 12807

Map 63: NW Annexation Area 63 As Described In Ordinance 12807

Map 64: NW Annexation Area 64 As Described In Ordinance 12807

Map 65: NW Annexation Area 65 As Described In Ordinance 12807

Map 66: NW Annexation Area 66 As Described In Ordinance 12807

Map 67: NW Annexation Area 67 As Described In Ordinance 12807

Map 68: NW Annexation Area 68 As Described In Ordinance 12807

Map 69: NW Annexation Area 69 As Described In Ordinance 12807

Map 70: NW Annexation Area 70 As Described In Ordinance 12807

Map 71: NW Annexation Area 71 As Described In Ordinance 12807

Map 72: NW Annexation Area 72 As Described In Ordinance 12807

Map 73: NW Annexation Area 73 As Described In Ordinance 12807

Map 74: NW Annexation Area 74 As Described In Ordinance 12807

Map 75: NW Annexation Area 75 As Described In Ordinance 12807

Map 76: NW Annexation Area 76 As Described In Ordinance 12807

Map 77: NW Annexation Area 77 As Described In Ordinance 12807

Map 78: NW Annexation Area 78 As Described In Ordinance 12807

Map 79: NW Annexation Area 79 As Described In Ordinance 12807

Map 80: NW Annexation Area 80 As Described In Ordinance 12807

Map 81: NW Annexation Area 81 As Described In Ordinance 12807

Map 82: NW Annexation Area 82 As Described In Ordinance 12807

Map 83: NW Annexation Area 83 As Described In Ordinance 12807

Map 84: NW Annexation Area 84 As Described In Ordinance 12807

Map 85: NW Annexation Area 85 As Described In Ordinance 12807

Map 86: NW Annexation Area 86 As Described In Ordinance 12807

Map 87: NW Annexation Area 87 As Described In Ordinance 12807

Map 88: NW Annexation Area 88 As Described In Ordinance 12807

Map 89: NW Annexation Area 89 As Described In Ordinance 12807

Map 90: NW Annexation Area 90 As Described In Ordinance 12807

Map 91: NW Annexation Area 91 As Described In Ordinance 12807

Map 92: NW Annexation Area 92 As Described In Ordinance 12807

Map 93: NW Annexation Area 93 As Described In Ordinance 12807

Map 94: NW Annexation Area 94 As Described In Ordinance 12807

Map 95: NW Annexation Area 95 As Described In Ordinance 12807

Map 96: NW Annexation Area 96 As Described In Ordinance 12807

Map 97: NW Annexation Area 97 As Described In Ordinance 12807

Map 98: NW Annexation Area 98 As Described In Ordinance 12807

Map 99: NW Annexation Area 99 As Described In Ordinance 12807

Map 100: NW Annexation Area 100 As Described In Ordinance 12807

Map 101: NW Annexation Area 101 As Described In Ordinance 12807

Map 102: NW Annexation Area 102 As Described In Ordinance 12807

Map 103: NW Annexation Area 103 As Described In Ordinance 12807

Map 104: NW Annexation Area 104 As Described In Ordinance 12807

Map 105: NW Annexation Area 105 As Described In Ordinance 12807

Map 106: NW Annexation Area 106 As Described In Ordinance 12807

Map 107: NW Annexation Area 107 As Described In Ordinance 12807

Map 108: NW Annexation Area 108 As Described In Ordinance 12807

Map 109: NW Annexation Area 109 As Described In Ordinance 12807

Map 110: NW Annexation Area 110 As Described In Ordinance 12807

Map 111: NW Annexation Area 111 As Described In Ordinance 12807

Map 112: NW Annexation Area 112 As Described In Ordinance 12807

Map 113: NW Annexation Area 113 As Described In Ordinance 12807

Map 114: NW Annexation Area 114 As Described In Ordinance 12807

Map 115: NW Annexation Area 115 As Described In Ordinance 12807

Map 116: NW Annexation Area 116 As Described In Ordinance 12807

Map 117: NW Annexation Area 117 As Described In Ordinance 12807

Map 118: NW Annexation Area 118 As Described In Ordinance 12807

Map 119: NW Annexation Area 119 As Described In Ordinance 12807

Map 120: NW Annexation Area 120 As Described In Ordinance 12807

Map 121: NW Annexation Area 121 As Described In Ordinance 12807

Map 122: NW Annexation Area 122 As Described In Ordinance 12807

Map 123: NW Annexation Area 123 As Described In Ordinance 12807

Map 124: NW Annexation Area 124 As Described In Ordinance 12807

Map 125: NW Annexation Area 125 As Described In Ordinance 12807

Map 126: NW Annexation Area 126 As Described In Ordinance 12807

Map 127: NW Annexation Area 127 As Described In Ordinance 12807

Map 128: NW Annexation Area 128 As Described In Ordinance 12807

Map 129: NW Annexation Area 129 As Described In Ordinance 12807

Map 130: NW Annexation Area 130 As Described In Ordinance 12807

Map 131: NW Annexation Area 131 As Described In Ordinance 12807

Map 132: NW Annexation Area 132 As Described In Ordinance 12807

Map 133: NW Annexation Area 133 As Described In Ordinance 12807

Map 134: NW Annexation Area 134 As Described In Ordinance 12807

Map 135: NW Annexation Area 135 As Described In Ordinance 12807

Map 136: NW Annexation Area 136 As Described In Ordinance 12807

Map 137: NW Annexation Area 137 As Described In Ordinance 12807

Map 138: NW Annexation Area 138 As Described In Ordinance 12807

Map 139: NW Annexation Area 139 As Described In Ordinance 12807

Map 140: NW Annexation Area 140 As Described In Ordinance 12807

Map 141: NW Annexation Area 141 As Described In Ordinance 12807

Map 142: NW Annexation Area 142 As Described In Ordinance 12807

Map 143: NW Annexation Area 143 As Described In Ordinance 12807

Map 144: NW Annexation Area 144 As Described In Ordinance 12807

Map 145: NW Annexation Area 145 As Described In Ordinance 12807

Map 146: NW Annexation Area 146 As Described In Ordinance 12807

Map 147: NW Annexation Area 147 As Described In Ordinance 12807

Map 148: NW Annexation Area 148 As Described In Ordinance 12807

Map 149: NW Annexation Area 149 As Described In Ordinance 12807

Map 150: NW Annexation Area 150 As Described In Ordinance 12807

Map 151: NW Annexation Area 151 As Described In Ordinance 12807

Map 152: NW Annexation Area 152 As Described In Ordinance 12807

Map 153: NW Annexation Area 153 As Described In Ordinance 12807

Map 154: NW Annexation Area 154 As Described In Ordinance 12807

Map 155: NW Annexation Area 155 As Described In Ordinance 12807

Map 156: NW Annexation Area 156 As Described In Ordinance 12807

Map 157: NW Annexation Area 157 As Described In Ordinance 12807

Map 158: NW Annexation Area 158 As Described In Ordinance 12807

Map 159: NW Annexation Area 159 As Described In Ordinance 12807

Map 160: NW Annexation Area 160 As Described In Ordinance 12807

Map 161: NW Annexation Area 161 As Described In Ordinance 12807

Map 162: NW Annexation Area 162 As Described In Ordinance 12807

Map 163: NW Annexation Area 163 As Described In Ordinance 12807

Map 164: NW Annexation Area 164 As Described In Ordinance 12807

Map 165: NW Annexation Area 165 As Described In Ordinance 12807

Map 166: NW Annexation Area 166 As Described In Ordinance 12807

Map 167: NW Annexation Area 167 As Described In Ordinance 12807

Map 168: NW Annexation Area 168 As Described In Ordinance 12807

Map 169: NW Annexation Area 169 As Described In Ordinance 12807

Map 170: NW Annexation Area 170 As Described In Ordinance 12807

Map 171: NW Annexation Area 171 As Described In Ordinance 12807

Map 172: NW Annexation Area 172 As Described In Ordinance 12807

Map 173: NW Annexation Area 173 As Described In Ordinance 12807

Map 174: NW Annexation Area 174 As Described In Ordinance 12807

Map 175: NW Annexation Area 175 As Described In Ordinance 12807

Map 176: NW Annexation Area 176 As Described In Ordinance 12807

Map 177: NW Annexation Area 177 As Described In Ordinance 12807

Map 178: NW Annexation Area 178 As Described In Ordinance 12807

Map 179: NW Annexation Area 179 As Described In Ordinance 12807

Map 180: NW Annexation Area 180 As Described In Ordinance 12807

Map 181: NW Annexation Area 181 As Described In Ordinance 12807

Map 182: NW Annexation Area 182 As Described In Ordinance 12807

Map 183: NW Annexation Area 183 As Described In Ordinance 12807

Map 184: NW Annexation Area 184 As Described In Ordinance 12807

Map 185: NW Annexation Area 185 As Described In Ordinance 12807

Map 186: NW Annexation Area 186 As Described In Ordinance 12807

Map 187: NW Annexation Area 187 As Described In Ordinance 12807

Map 188: NW Annexation Area 188 As Described In Ordinance 12807

Map 189: NW Annexation Area 189 As Described In Ordinance 12807

Map 190: NW Annexation Area 190 As Described In Ordinance 12807

Map 191: NW Annexation Area 191 As Described In Ordinance 12807

Map 192: NW Annexation Area 192 As Described In Ordinance 12807

Map 193: NW Annexation Area 193 As Described In Ordinance 12807

Map 194: NW Annexation Area 194 As Described In Ordinance 12807

Map 195: NW Annexation Area 195 As Described In Ordinance 12807

Map 196: NW Annexation Area 196 As Described In Ordinance 12807

Map 197: NW Annexation Area 197 As Described In Ordinance 12807

Map 198: NW Annexation Area 198 As Described In Ordinance 12807

Map 199: NW Annexation Area 199 As Described In Ordinance 12807

Map 200: NW Annexation Area 200 As Described In Ordinance 12807

Map 201: NW Annexation Area 201 As Described In Ordinance 12807

Map 202: NW Annexation Area 202 As Described In Ordinance 12807

Map 203: NW Annexation Area 203 As Described In Ordinance 12807

Map 204: NW Annexation Area 204 As Described In Ordinance 12807

Map 205: NW Annexation Area 205 As Described In Ordinance 12807

Map 206: NW Annexation Area 206 As Described In Ordinance 12807

Map 207: NW Annexation Area 207 As Described In Ordinance 12807

Map 208: NW Annexation Area 208 As Described In Ordinance 12807

Map 209: NW Annexation Area 209 As Described In Ordinance 12807

Map 210: NW Annexation Area 210 As Described In Ordinance 12807

Map 211: NW Annexation Area 211 As Described In Ordinance 12807

Map 212: NW Annexation Area 212 As Described In Ordinance 12807

Map 213: NW Annexation Area 213 As Described In Ordinance 12807

Map 214: NW Annexation Area 214 As Described In Ordinance 12807

Map 215: NW Annexation Area 215 As Described In Ordinance 12807

Map 216: NW Annexation Area 216 As Described In Ordinance 12807

Map 217: NW Annexation Area 217 As Described In Ordinance 12807

Map 218: NW Annexation Area 218 As Described In Ordinance 12807

Map 219: NW Annexation Area 219 As Described In Ordinance 12807

Map 220: NW Annexation Area 220 As Described In Ordinance 12807

Map 221: NW Annexation Area 221 As Described In Ordinance 12807

Map 222: NW Annexation Area 222 As Described In Ordinance 12807

Map 223: NW Annexation Area 223 As Described In Ordinance 12807

Map 224: NW Annexation Area 224 As Described In Ordinance 12807

Map 225: NW Annexation Area 225 As Described In Ordinance 12807

Map 226: NW Annexation Area 226 As Described In Ordinance 12807

Map 227: NW Annexation Area 227 As Described In Ordinance 12807

Map 228: NW Annexation Area 228 As Described In Ordinance 12807

Map 229: NW Annexation Area 229 As Described In Ordinance 12807

Map 230: NW Annexation Area 230 As Described In Ordinance 12807

Map 231: NW Annexation Area 231 As Described In Ordinance 12807

Map 232: NW Annexation Area 232 As Described In Ordinance 12807

Map 233: NW Annexation Area 233 As Described In Ordinance 12807

Map 234: NW Annexation Area 234 As Described In Ordinance 12807

Map 235: NW Annexation Area 235 As Described In Ordinance 12807

Map 236: NW Annexation Area 236 As Described In Ordinance 12807

Map 237: NW Annexation Area 237 As Described In Ordinance 12807

Map 238: NW Annexation Area 238 As Described In Ordinance 12807

Map 239: NW Annexation Area 239 As Described In Ordinance 12807

Map 240: NW Annexation Area 240 As Described In Ordinance 12807

Map 241: NW Annexation Area 241 As Described In Ordinance 12807

Map 242: NW Annexation Area 242 As Described In Ordinance 12807

Map 243: NW Annexation Area 243 As Described In Ordinance 12807

Map 244: NW Annexation Area 244 As Described In Ordinance 12807

Map 245: NW Annexation Area 245 As Described In Ordinance 12807

Map 246: NW Annexation Area 246 As Described In Ordinance 12807

Map 247: NW Annexation Area 247 As Described In Ordinance 12807

Map 248: NW Annexation Area 248 As Described In Ordinance 12807

Map 249: NW Annexation Area 249 As Described In Ordinance 12807

Map 250: NW Annexation Area 250 As Described In Ordinance 12807

Map 251: NW Annexation Area 251 As Described In Ordinance 12807

Map 252: NW Annexation Area 252 As Described In Ordinance 12807

Map 253: NW Annexation Area 253 As Described In Ordinance 12807

Map 254: NW Annexation Area 254 As Described In Ordinance 12807

Map 255: NW Annexation Area 255 As Described In Ordinance 12807

Map 256: NW Annexation Area 256 As Described In Ordinance 12807

Map 257: NW Annexation Area 257 As Described In Ordinance 12807

Map 258: NW Annexation Area 258 As Described In Ordinance 12807

Map 259: NW Annexation Area 259 As Described In Ordinance 12807

Map 260: NW Annexation Area 260 As Described In Ordinance 12807

Map 261: NW Annexation Area 261 As Described In Ordinance 12807

Map 262: NW Annexation Area 262 As Described In Ordinance 12807

Map 263: NW Annexation Area 263 As Described In Ordinance 12807

Map 264: NW Annexation Area 264 As Described In Ordinance 12807

Map 265: NW Annexation Area 265 As Described In Ordinance 12807

Map 266: NW Annexation Area 266 As Described In Ordinance 12807

Map 267: NW Annexation Area 267 As Described In Ordinance 12807

Map 268: NW Annexation Area 268 As Described In Ordinance 12807

Map 269: NW Annexation Area 269 As Described In Ordinance 12807

Map 270: NW Annexation Area 270 As Described In Ordinance 12807

Map 271: NW Annexation Area 271 As Described In Ordinance 12807

Map 272: NW Annexation Area 272 As Described In Ordinance 12807

Map 273: NW Annexation Area 273 As Described In Ordinance 12807

Map 274: NW Annexation Area 274 As Described In Ordinance 12807

Map 275: NW Annexation Area 275 As Described In Ordinance 12807

Map 276: NW Annexation Area 276 As Described In Ordinance 12807

Map 277: NW Annexation Area 277 As Described In Ordinance 12807

Map 278: NW Annexation Area 278 As Described In Ordinance 12807

Map 279: NW Annexation Area 279 As Described In Ordinance 12807

Map 280: NW Annexation Area 280 As Described In Ordinance 12807

Map 281: NW Annexation Area 281 As Described In Ordinance 12807

Map 282: NW Annexation Area 282 As Described In Ordinance 12807

Map 283: NW Annexation Area 283 As Described In Ordinance 12807

Map 284: NW Annexation Area 284 As Described In Ordinance 12807

Map 285: NW Annexation Area 285 As Described In Ordinance 12807

Map 286: NW Annexation Area 286 As Described In Ordinance 12807

Map 287: NW Annexation Area 287 As Described In Ordinance 12807

Map 288: NW Annexation Area 288 As Described In Ordinance 12807

Map 289: NW Annexation Area 289 As Described In Ordinance 12807

Map 290: NW Annexation Area 290 As Described In Ordinance 12807

Map 291: NW Annexation Area 291 As Described In Ordinance 12807

Map 292: NW Annexation Area 292 As Described In Ordinance 12807

Map 293: NW Annexation Area 293 As Described In Ordinance 12807

Map 294: NW Annexation Area 294 As Described In Ordinance 12807

Map 295: NW Annexation Area 295 As Described In Ordinance 12807

Map 296: NW Annexation Area 296 As Described In Ordinance 12807

Map 297: NW Annexation Area 297 As Described In Ordinance 12807

Map 298: NW Annexation Area 298 As Described In Ordinance 12807

Map 299: NW Annexation Area 299 As Described In Ordinance 12807

Map 300: NW Annexation Area 300 As Described In Ordinance 12807

Map 301: NW Annexation Area 301 As Described In Ordinance 12807

Map 302: NW Annexation Area 302 As Described In Ordinance 12807

Map 303: NW Annexation Area 303 As Described In Ordinance 12807

Map 304: NW Annexation Area 304 As Described In Ordinance 12807

Map 305: NW Annexation Area 305 As Described In Ordinance 12807

Map 306: NW Annexation Area 306 As Described In Ordinance 12807

Map 307: NW Annexation Area 307 As Described In Ordinance 12807

Map 308: NW Annexation Area 308 As Described In Ordinance 12807

Map 309: NW Annexation Area 309 As Described In Ordinance 12807

Map 310: NW Annexation Area 310 As Described In Ordinance 12807

Map 311: NW Annexation Area 311 As Described In Ordinance 12807

Map 312: NW Annexation Area 312 As Described In Ordinance 12807

Map 313: NW Annexation Area 313 As Described In Ordinance 12807

Map 314: NW Annexation Area 314 As Described In Ordinance 12807

Map 315: NW Annexation Area 315 As Described In Ordinance 12807

Map 316: NW Annexation Area 316 As Described In Ordinance 12807

Map 317: NW Annexation Area 317 As Described In Ordinance 12807

Map 318: NW Annexation Area 318 As Described In Ordinance 12807

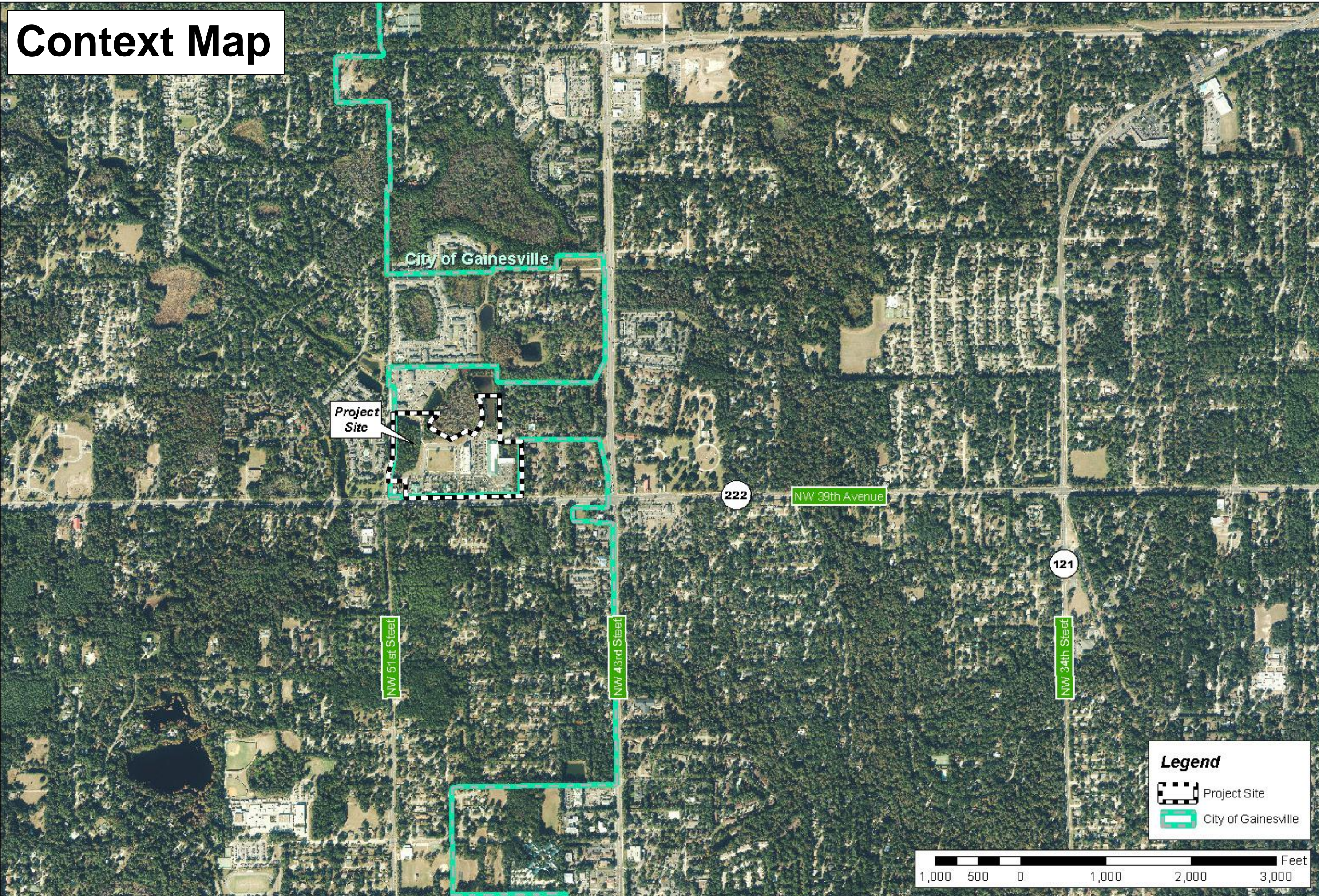
Map 319: NW Annexation Area 319 As Described In Ordinance 12807

Map 320: NW Annexation Area 320 As Described In Ordinance 12807

Map 321: NW Annexation Area

Context Map

ILLUSTRATION: 1A
CONTEXT MAP



Project Site

City of Gainesville

222

NW 39th Avenue

121

NW 34th Street

NW 51st Street

NW 43rd Street

Legend

- Project Site
- City of Gainesville



Magnolia Parke PD Amendment



Prepared By: Engineering AM
Project No: 16-001-1923 - 54-Whisper
Title: Magnolia Parke PD Amendment
Revision: 1
Scale: 1" = 1000'
Date: 6/1/2017
Causseaux, Hewett, & Walpole, Inc.
132 NW 76th Drive, Gainesville, FL 32607
Phone: (352) 331-1976 Fax: (352) 331-2476
http://www.chw-inc.com

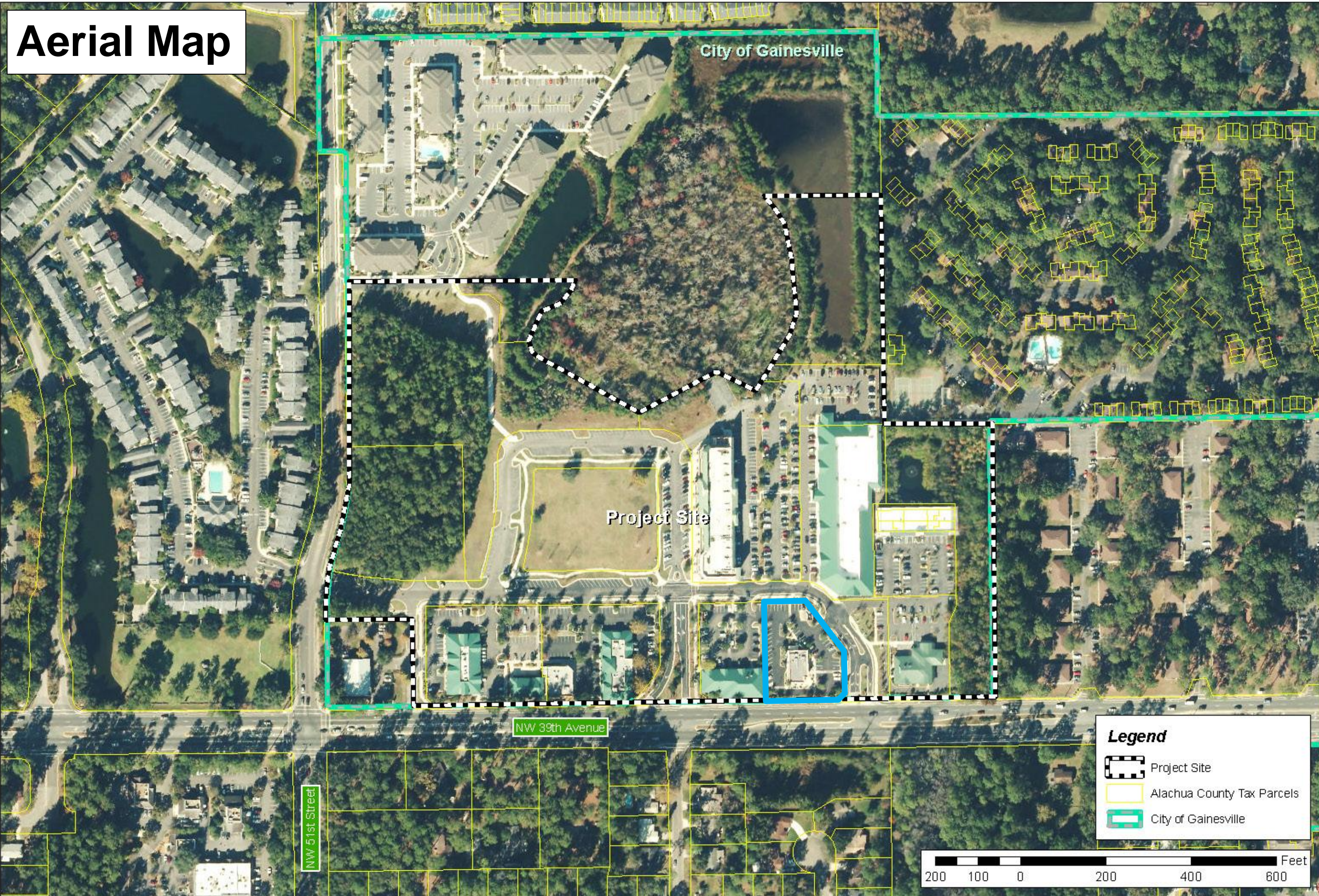
Causseaux, Hewett, & Walpole, Inc.
Engineering • Surveying • Planning • CEI
132 NW 76th Drive, Gainesville, FL 32607
Phone: (352) 331-1976 Fax: (352) 331-2476
<http://www.chw-inc.com>



File: L:\063501\31340\76076\063501.dwg Date: June 1, 2017

Aerial Map

ILLUSTRATION: 1B
AERIAL MAP



Magnolia Parke PD Amendment



Legend

- Project Site
- Alachua County Tax Parcels
- City of Gainesville

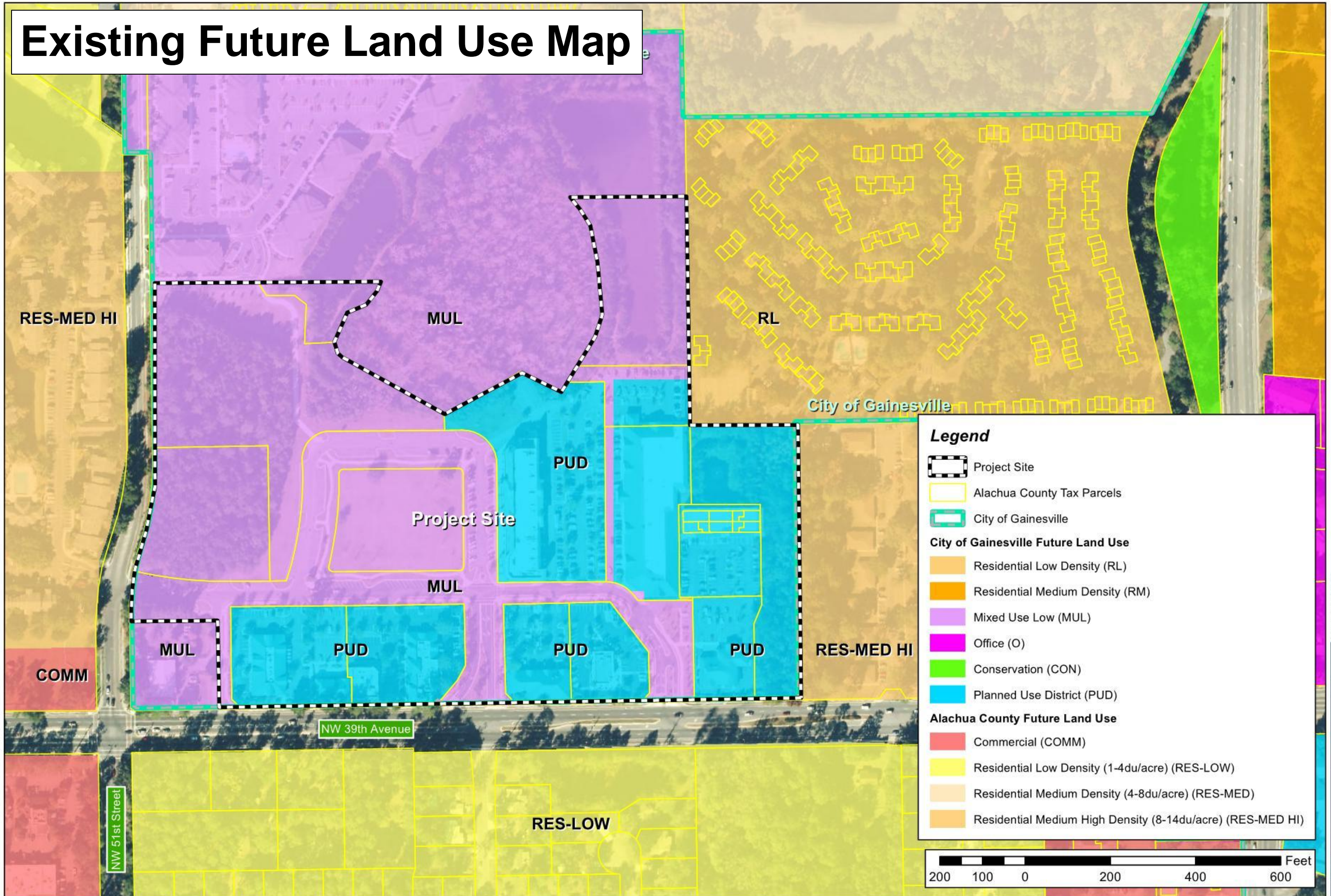
Prepared by: Employee A.M.
Project: MAG 1923 - 54 where
Florida, Inc. P.O. Box 1000
Tallahassee, Florida 32309-1000
Phone: (904) 487-0000
Fax: (904) 487-0000
City of Gainesville, FL 32607
State of Florida 1-25-2007
Last Modified: 7/20/2007
OC2, New 0, American 1923

Causseaux, Hewett, & Walpole, Inc.
Engineering • Surveying • Planning • CEI
132 NW 76th Drive, Gainesville, FL 32607
Phone: (352) 331-1976 Fax: (352) 331-2476
<http://www.chw-inc.com>



File: L:\03\001 31340 76076\03\001\03\001.dwg Date: June 1, 2017

Existing Future Land Use Map



Legend

- Project Site
- Alachua County Tax Parcels
- City of Gainesville

City of Gainesville Future Land Use

- Residential Low Density (RL)
- Residential Medium Density (RM)
- Mixed Use Low (MUL)
- Office (O)
- Conservation (CON)
- Planned Use District (PUD)

Alachua County Future Land Use

- Commercial (COMM)
- Residential Low Density (1-4du/acre) (RES-LOW)
- Residential Medium Density (4-8du/acre) (RES-MED)
- Residential Medium High Density (8-14du/acre) (RES-MED HI)

Magnolia Parke PD Amendment

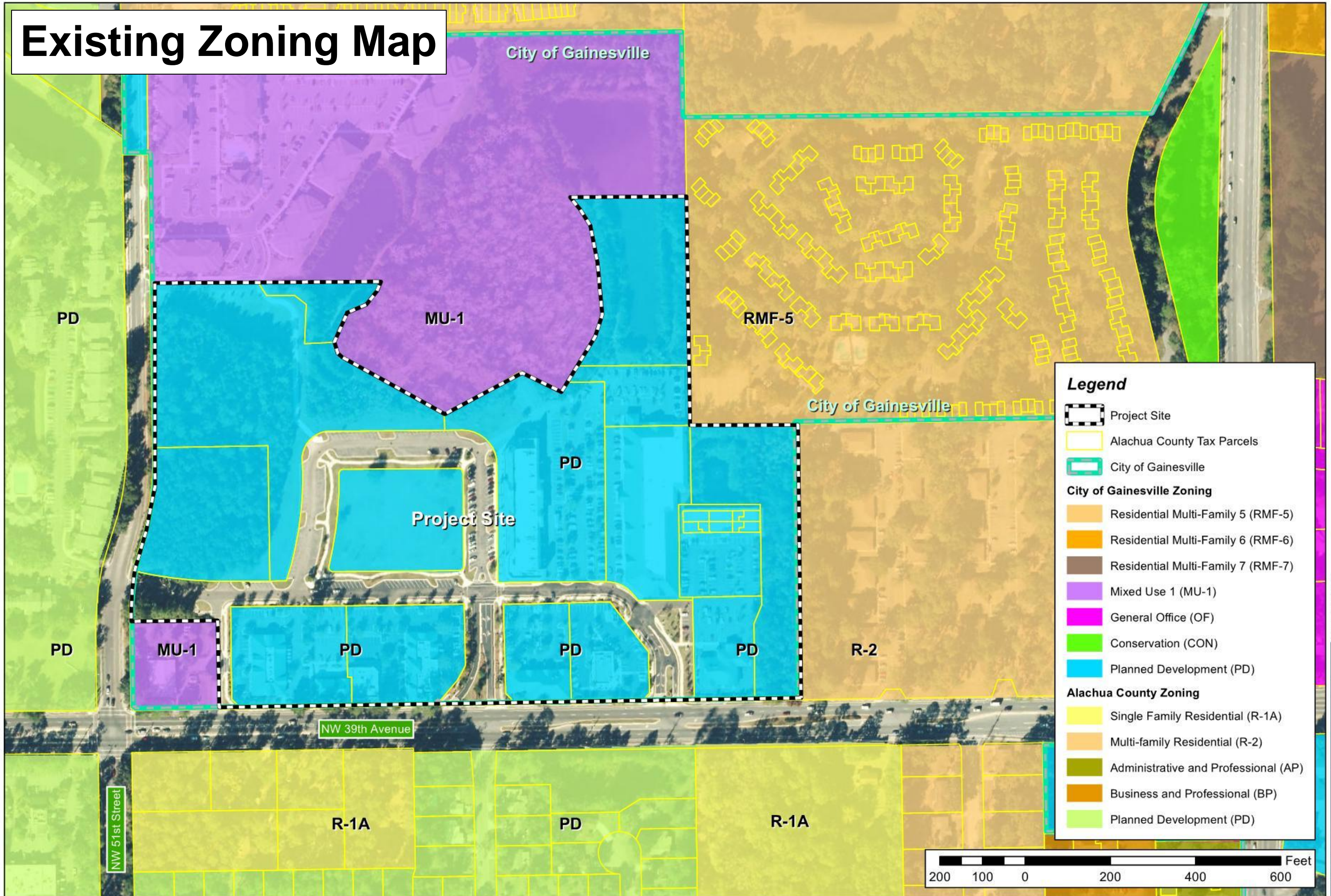


Prepared by: Employee #27
 Projection: NAD, 1983, StatePlane
 Florida, North, FIPS_0603_Feet
 Projection: Lambert_Conformal_Conic
 False Northing: 0.000000
 Central Meridian: -86.500000
 Standard Parallel 1: 29.583333
 Standard Parallel 2: 29.000000
 Lambert Azimuthal Equal Area
 GCS: North American, 1983
 Date: June 1, 2012

Causseaux, Hewett, & Walpole, Inc.
 Engineering • Surveying • Planning • CEI
 132 NW 76th Drive, Gainesville, FL 32607
 Phone: (352) 331-1976 Fax: (352) 331-2476
<http://www.chw-inc.com>



Existing Zoning Map



Legend

- Project Site
- Alachua County Tax Parcels
- City of Gainesville

City of Gainesville Zoning

- Residential Multi-Family 5 (RMF-5)
- Residential Multi-Family 6 (RMF-6)
- Residential Multi-Family 7 (RMF-7)
- Mixed Use 1 (MU-1)
- General Office (OF)
- Conservation (CON)
- Planned Development (PD)

Alachua County Zoning

- Single Family Residential (R-1A)
- Multi-family Residential (R-2)
- Administrative and Professional (AP)
- Business and Professional (BP)
- Planned Development (PD)

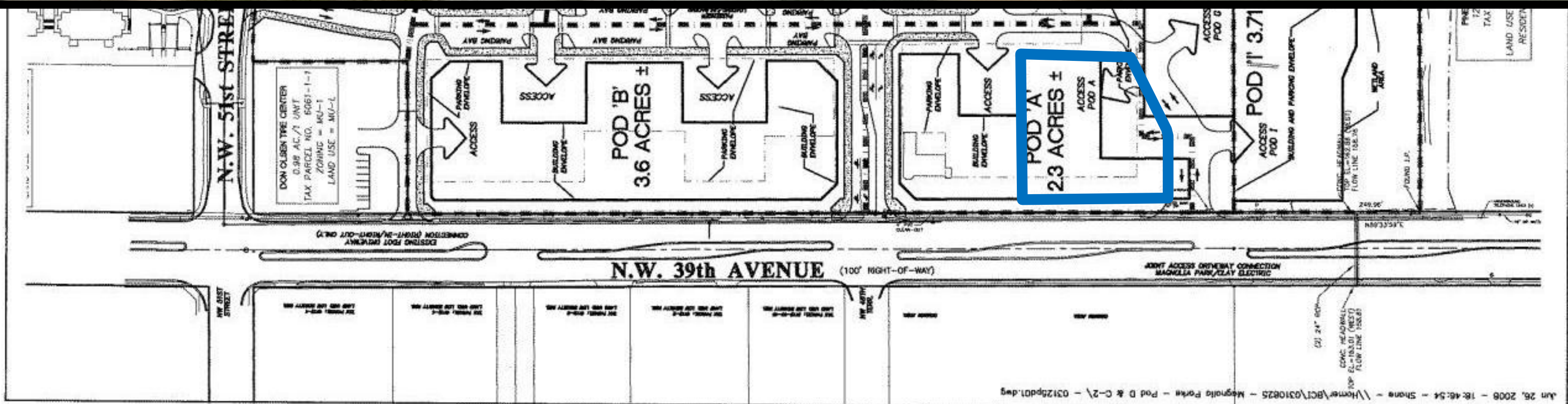
Magnolia Parke PD Amendment



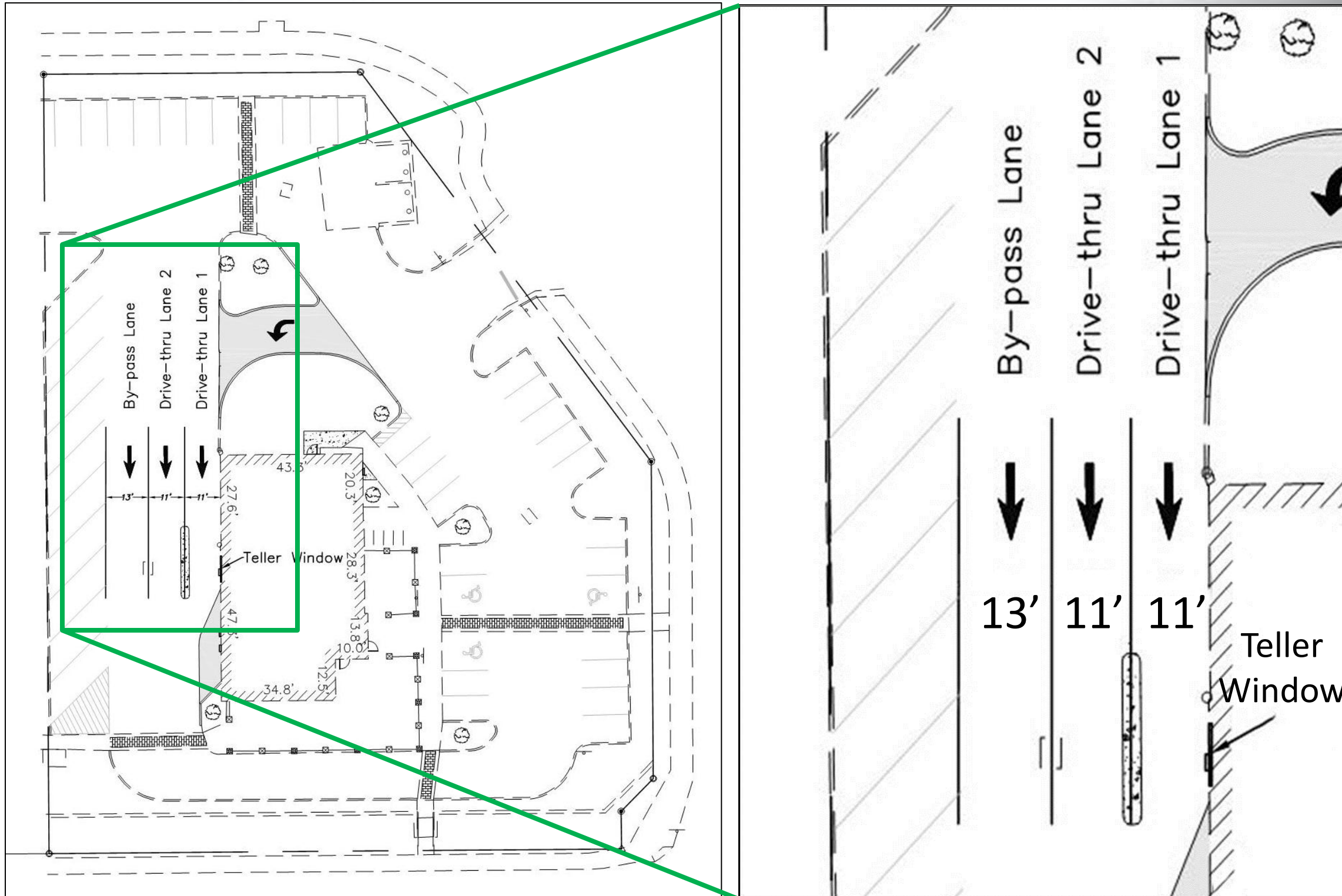
Prepared by: Employee #22
 Projection: NAD 1983 StatePlane
 Florida North FIPS 0803 Feet
 Projection: Lambert Conformal Conic
 False Northing: 0.000000
 Central Meridian: -86.500000
 Standard Parallel 1: 29.583333
 Standard Parallel 2: 29.000000
 Lambert Azimuthal Equal Area
 GCS: North American 1983
 Date: June 1, 2012

Causseaux, Hewett, & Walpole, Inc.
 Engineering • Surveying • Planning • CEI
 132 NW 76th Drive, Gainesville, FL 32607
 Phone: (352) 331-1976 Fax: (352) 331-2476
<http://www.chw-inc.com>





Proposed Drive-Through Lanes





Magnolia Parke Planned Development Amendment

City Commission
First Reading

July 17, 2014



CAUSSEAUX, HEWETT, & WALPOLE, INC.

Civil **Engineering** Land **Surveying** Land **Planning** Construction Engineering **Inspection**