

Gainesville.

Citizen centered

People empowered

ADDENDUM NO. 2

Date: March 20, 2019

Bid Date: March 28, 2019
3:00 P.M. (Local Time)

Bid Name: Janitorial Services for Regional Transit System Facilities

Bid No.: RTSX-190033-DS

NOTE: This Addendum has been issued to the holders of record of the specifications and attendees of the non-mandatory pre-bid meeting held on March 14, 2019.

The original Specifications remain in full force and effect except as revised by the following changes which shall take precedence over anything to the contrary:

1. Question submittal period has ended, no additional questions will be answered.
2. Questions and responses from Addendum #1:

Question1: Please clarify hour range and times for service.

Answer1: Please refer to Attachment C-Occupied Building Hours. Make determination from that to schedule causing the least disruption of occupants.

Question 2: Pressure Washing of windows – will you provide the water?

Answer 2: Yes.

Question 3: What is average cost of monthly paper products?

Answer 3: Refer to Attachment F-Estimated Annual Usage. Contractors have different costs for supplies. We average around \$20,000 per year for all cleaning supplies.

Question 5: Are recycles to be picked up from each office or only from the copy room area and taken outside?

Answer 5: Empty the recycles from the offices (they should only have copy paper) into the large paper recycle bins in the copy rooms. The large paper recycle bins in copy rooms are picked up by recycle company. Empty recycle trashcans from breakrooms (they have plastics) to recycle bins at dumpster area.

Question 6: How many offices are on the first floor of Building A (Admin/Ops)?

Answer 6: Refer to attached floor plan.

Question 8: Are both recycling and trash to be emptied?

Answer 8: Yes.

Question 10: The bid provides estimated square footage. Can you provide us the actual square footage?

Answer 10: Refer to attached floor plan.

Question 16: Could we get a copy of the floor plan for all buildings?

Answer 16: Yes, floor plan is attached.

ACKNOWLEDGMENT: Each Proposer shall acknowledge receipt of this Addendum No. 2 by his or her signature below, **and shall attach a copy of this Addendum to its proposal.**

CERTIFICATION BY PROPOSER

The undersigned acknowledges receipt of this Addendum No. 2 and the Proposal submitted is in accordance with information, instructions, and stipulations set forth herein.

PROPOSER: _____

BY: _____

DATE: _____

RTS BUS FLEET MAINTENANCE & OPERATIONS FACILITY

Gainesville, Florida

for City of Gainesville

RECORD DRAWING:
This drawing shall be governed by the applicable contract documents. The contractor shall verify the accuracy of the information shown on this drawing. The contractor shall be responsible for obtaining all necessary permits and approvals. The contractor shall be responsible for obtaining all necessary approvals from the City of Gainesville. The contractor shall be responsible for obtaining all necessary approvals from the City of Gainesville.

CONFORMED DOCUMENTS

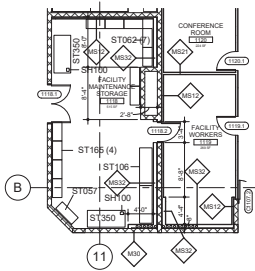
APRIL W. PONIKVAR ARCH2407
DRAFTED BY: MB
ARCHITECT'S PROJECT NO.: 11046

DATE: 29 March 2019

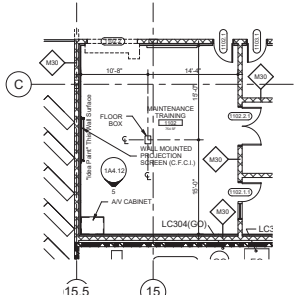
REVISION TABLE

| No. | Description | Date |
|-----|-------------|------|
| | | |
| | | |
| | | |

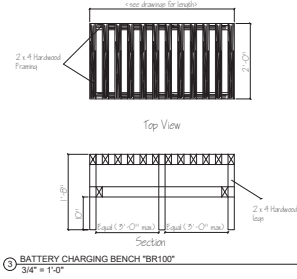
PLANS CHECKED BY: DATE CHECKED:
ARCHITECTURAL: FLOOR PLAN - FIRST FLOOR (CORE)



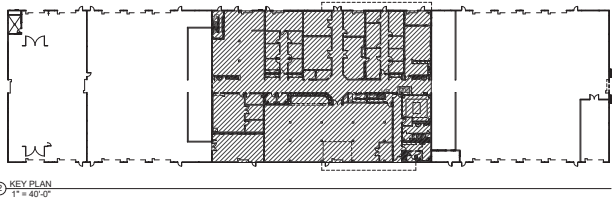
5 PARTIAL FLOOR PLAN - FIRST FLOOR
1/8" = 1'-0"



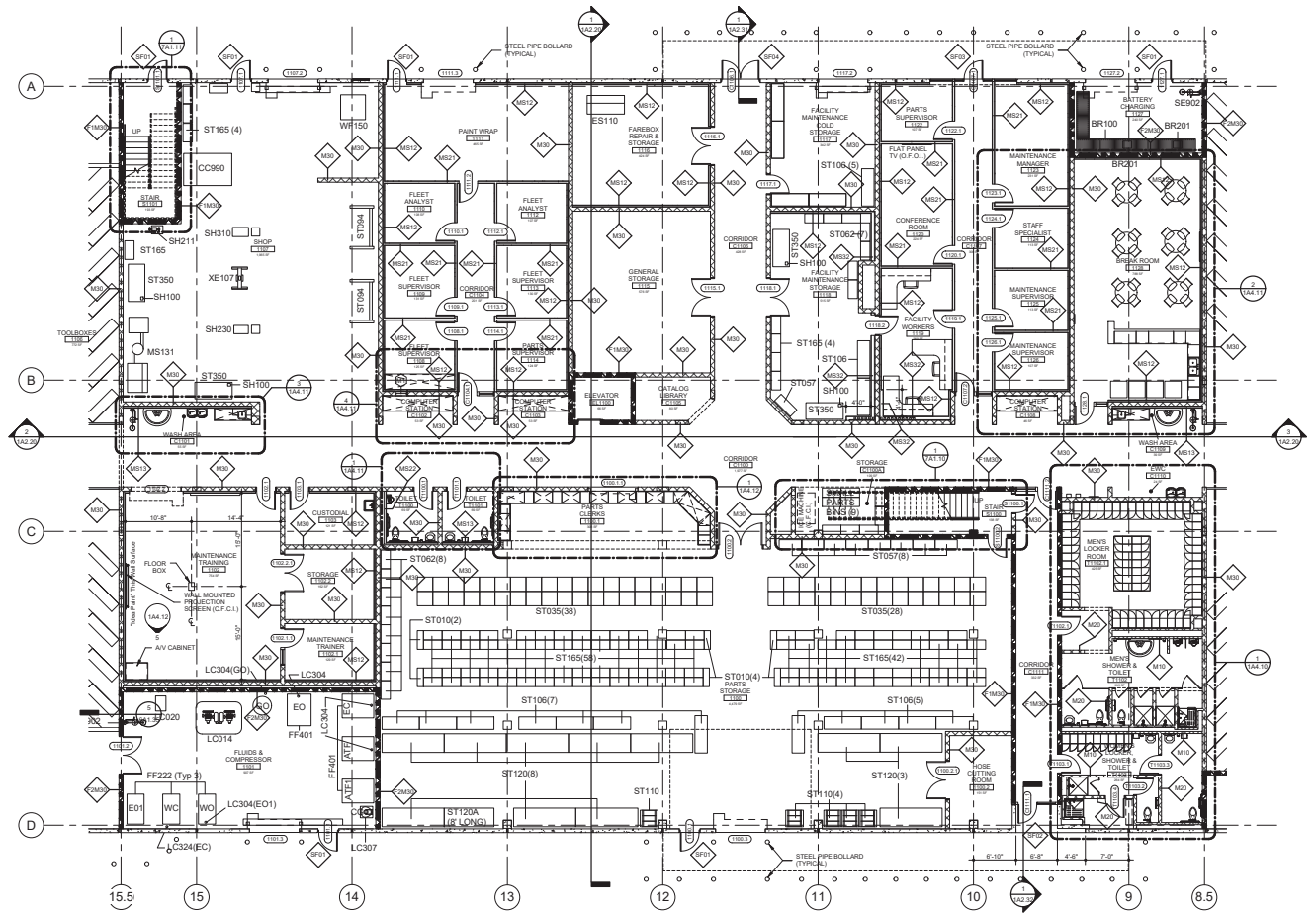
4 PARTIAL FLOOR PLAN - FIRST FLOOR
1/8" = 1'-0"



3 BATTERY CHARGING BENCH "BR100"
3/4" = 1'-0"



KEY PLAN
1" = 40'-0"



1 INTERIOR PARTITION
1/8" = 1'-0"

ARCHITECTS

AA 000086
720 SW 3RD AVENUE SUITE 100
GAINESVILLE, FLORIDA 32601
PHONE: (352) 373-1378 FAX: (352) 373-1371

RTS BUS FLEET MAINTENANCE & OPERATIONS FACILITY

Gainesville, Florida

for City of Gainesville

RECORD DRAWING:

THIS RECORD DRAWING IS BASED ON INFORMATION CONTAINED IN THE CONTRACT AND SHALL BE THE ARCHITECT'S RESPONSIBILITY FOR THE ACCURACY OF THE RECORD DRAWING.

CONFORMED DOCUMENTS

APRIL W. PONIKVAR
ARB2407

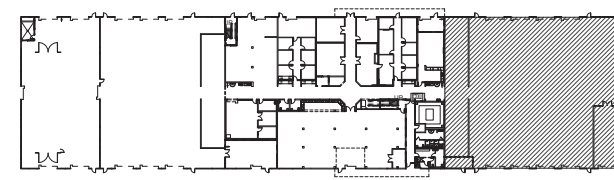
DRAFTED BY: MB
ARCHITECT'S PROJECT NO.: 11046

DATE: 29 March 2013

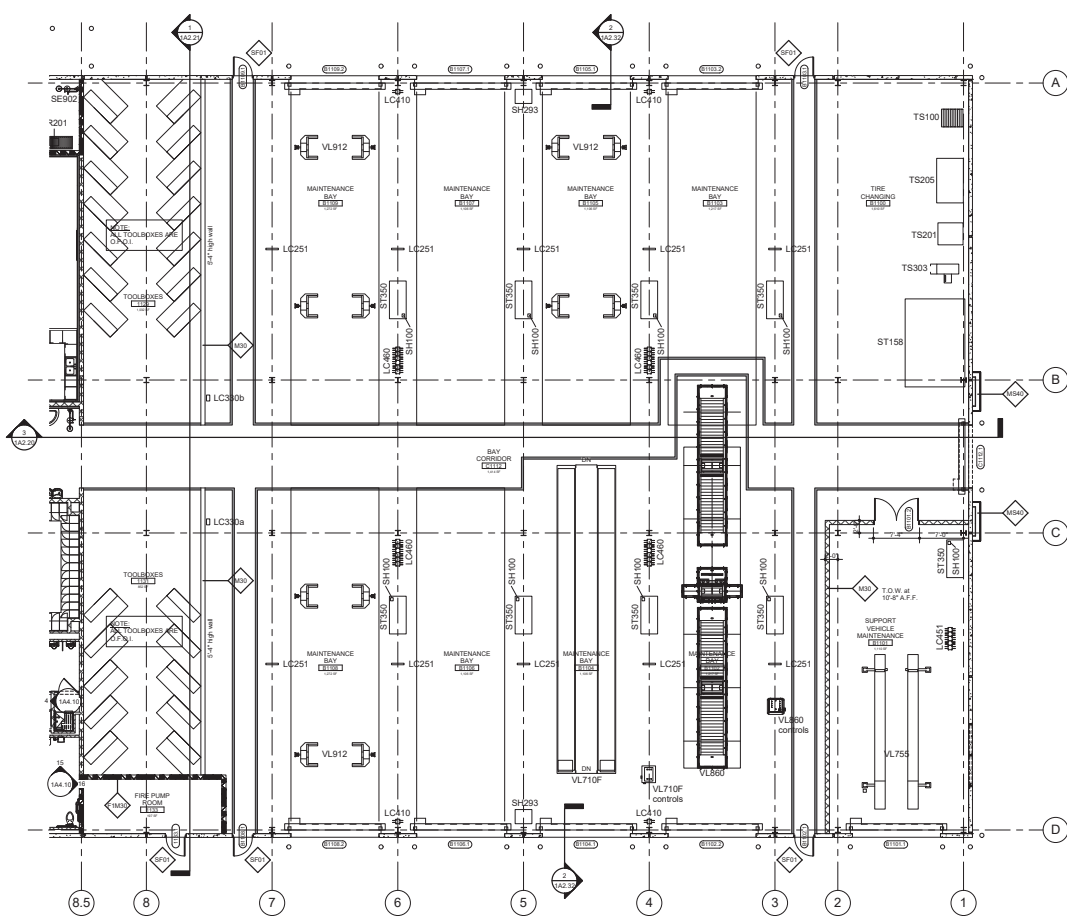
| No. | Description | Date |
|-----|-------------|------|
| | | |
| | | |
| | | |

PLANS CHECKED BY: DATE CHECKED:
ARCHITECTURAL:
FLOOR PLAN - FIRST FLOOR (SOUTH BAYS)

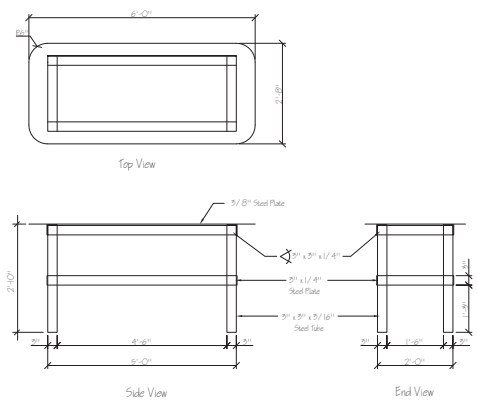
1A1.11



KEY PLAN
1" = 40'-0"



ARCHITECTURAL FLOOR PLAN - FIRST FLOOR (SOUTH BAYS)
1/8" = 1'-0"



HEAVY-DUTY WORKBENCH "ST350"
3/4" = 1'-0"

RTS BUS FLEET MAINTENANCE & OPERATIONS FACILITY

Gainesville, Florida

for
City of Gainesville

RECORD DRAWING:
THIS DRAWING IS THE PROPERTY OF POKIKVAR ASSOCIATES, INC. IT IS TO BE USED ONLY FOR THE PROJECT AND SITE SPECIFICALLY IDENTIFIED HEREON. NO REUSE, REPRODUCTION, OR ALTERATION OF THIS DRAWING IS PERMITTED WITHOUT THE WRITTEN CONSENT OF POKIKVAR ASSOCIATES, INC.

CONFORMED DOCUMENTS

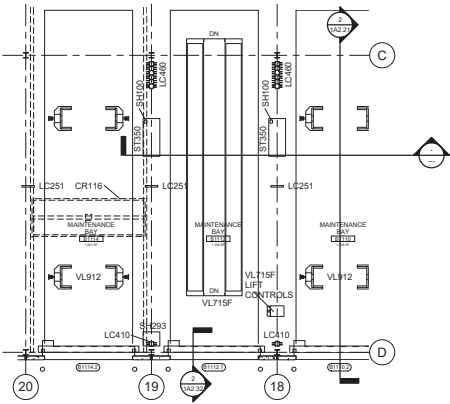
APRIL W. POKIKVAR
ARB2407
DRAFTED BY: MB
ARCHITECT'S PROJECT NO.: 11046

DATE: 29 March 2019

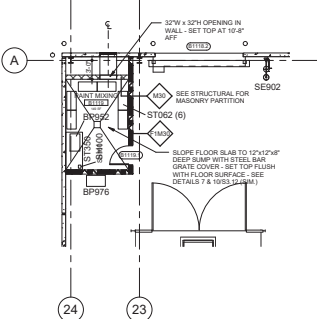
REVISION TABLE

| No. | Description | Date |
|-----|-------------|------|
| | | |
| | | |
| | | |

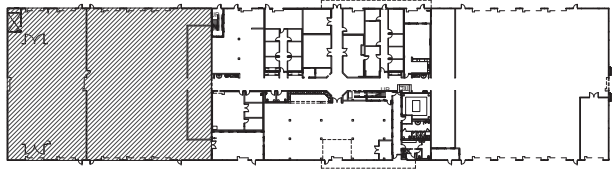
PLANS CHECKED BY: DATE CHECKED:
ARCHITECTURAL:
FLOOR PLAN - FIRST FLOOR (NORTH BAYS)



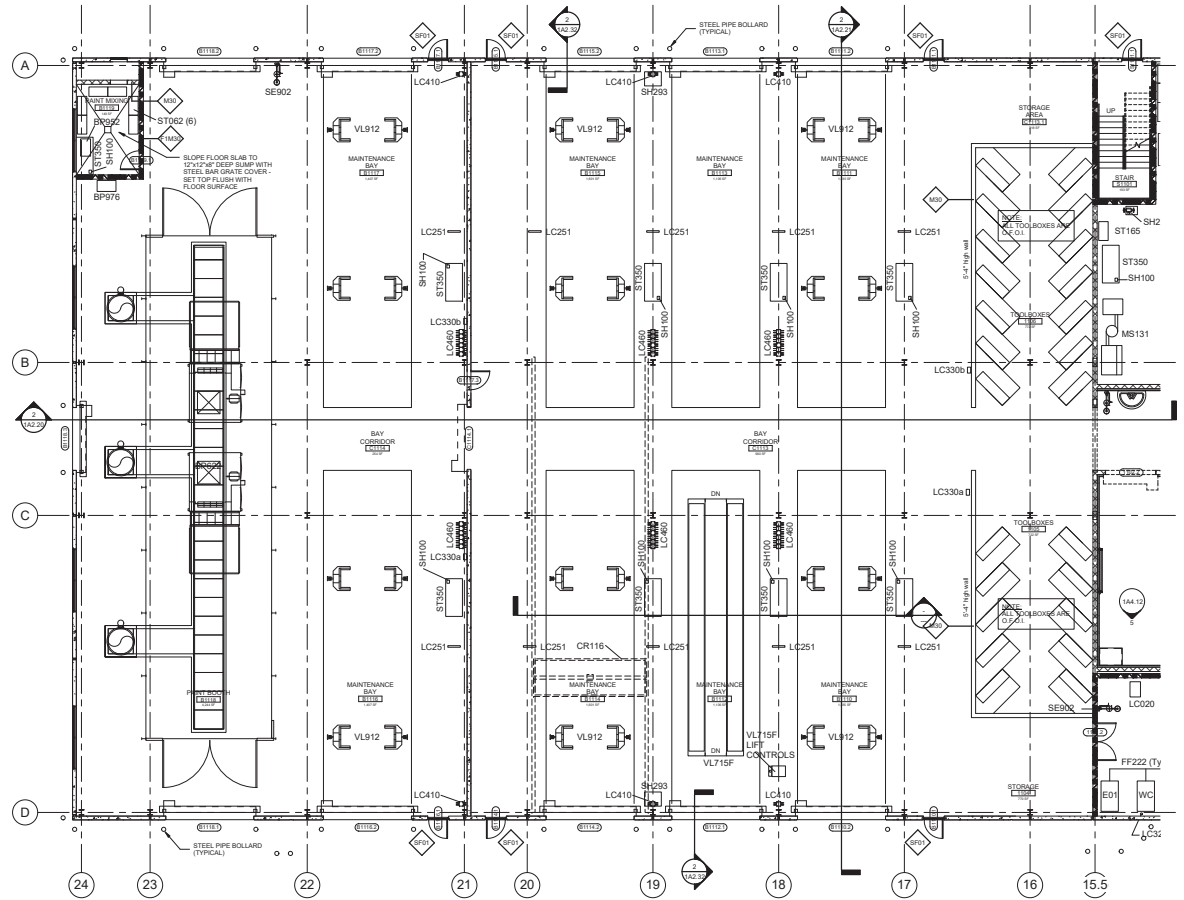
PARTIAL FLOOR PLAN - FIRST FLOOR
1/8" = 1'-0"



PARTIAL FLOOR PLAN - FIRST FLOOR
1/8" = 1'-0"



KEY PLAN
1" = 40'-0"



ARCHITECTURAL FLOOR PLAN - FIRST FLOOR (NORTH BAYS)
1/8" = 1'-0"

RTS BUS FLEET MAINTENANCE & OPERATIONS FACILITY

Gainesville, Florida

for
City of Gainesville

RECORD DRAWING:
THIS RECORD DRAWING IS BASED ON INFORMATION SUPPLIED BY THE CONTRACTOR AND IS NOT TO BE USED FOR ANY OTHER PROJECTS WITHOUT THE WRITTEN CONSENT OF THE ARCHITECT. CONTRACTOR SHALL BE RESPONSIBLE FOR THE ACCURACY OF THIS RECORD DRAWING.
DATE: 02.16.12

CONFORMED DOCUMENTS

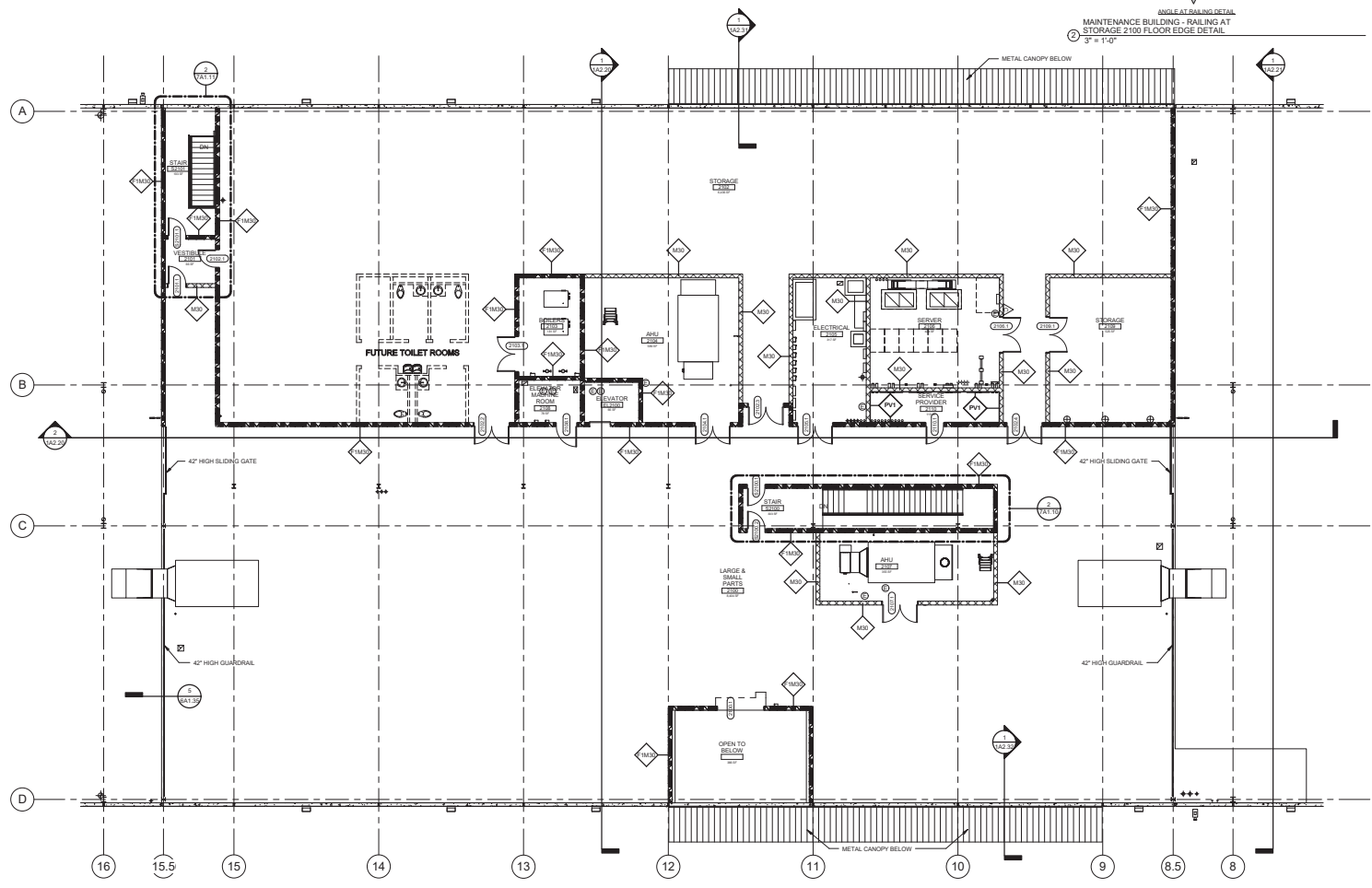
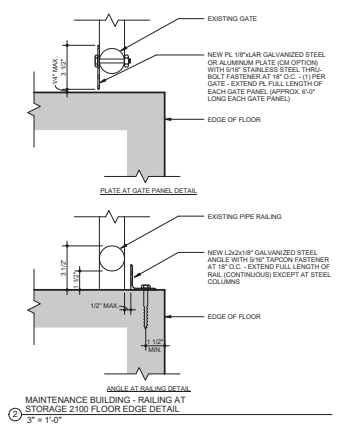
APRIL W. PONIKVAR
ARB2407
DRAFTED BY: MB
ARCHITECT'S PROJECT NO.: 11046

DATE: 29 March 2013

REVISION DATES:

| No. | Description | Date |
|-----|-------------|------|
| | | |
| | | |
| | | |

PLANS CHECKED BY: _____
DATE CHECKED: _____
ARCHITECTURAL: _____
FLOOR PLAN - SECOND FLOOR (CORE)



ARCHITECTURAL FLOOR PLAN - SECOND FLOOR (CORE)
1/8" = 1'-0"

RTS BUS FLEET MAINTENANCE & OPERATIONS FACILITY

Gainesville, Florida

for
 City of Gainesville

RECORD DRAWING:
 THIS RECORD DRAWING IS BASED ON INFORMATION SUPPLIED BY THE CONTRACTOR AND SHALL BE THE ARCHITECT'S AND ARCHITECTS ASSOCIATES' RESPONSIBILITY FOR THE ACCURACY OF THE CONTRACT DRAWING.
 CONTRACTOR: GAINESVILLE CITY CONTRACT NO. 181049C
 DATE: 02.11.15

CONFORMED DOCUMENTS

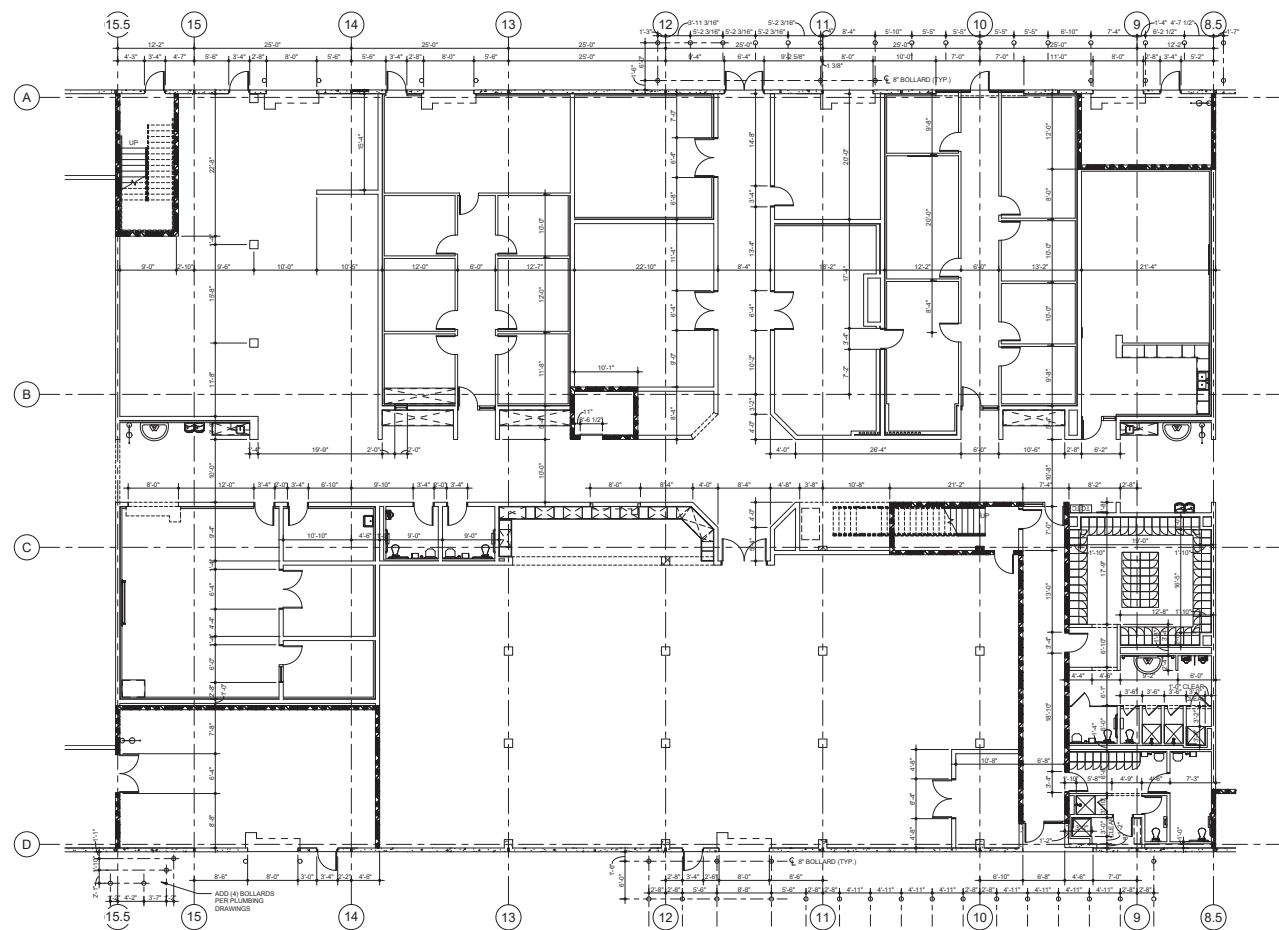
APRIL W. PONIKVAR
 AR02407
 DRAFTED BY: MB
 ARCHITECT'S PROJECT NO.: 11046

DATE: 29 March 2013

REVISION DATES:

| No. | Description | Date |
|-----|-------------|------|
| | | |
| | | |
| | | |

PLANS CHECKED BY:
 DATE CHECKED:
 ARCHITECTURAL:
 DIMENSION PLAN - FIRST FLOOR (CORE)



① DIMENSION PLAN - FIRST FLOOR (CORE)
 1/8" = 1'-0"

RTS BUS FLEET MAINTENANCE & OPERATIONS FACILITY

Gainesville, Florida

for City of Gainesville

RECORD DRAWING:
THIS RECORD DRAWING IS BASED ON INFORMATION SUPPLIED BY THE CONTRACTOR AND DOES NOT REPRESENT THE ARCHITECT'S ASSUMED RESPONSIBILITY FOR THE ACCURACY OF THE CONTRACT DRAWING.
CONTRACTOR: [blank] DATE: 02.16.14

CONFORMED DOCUMENTS

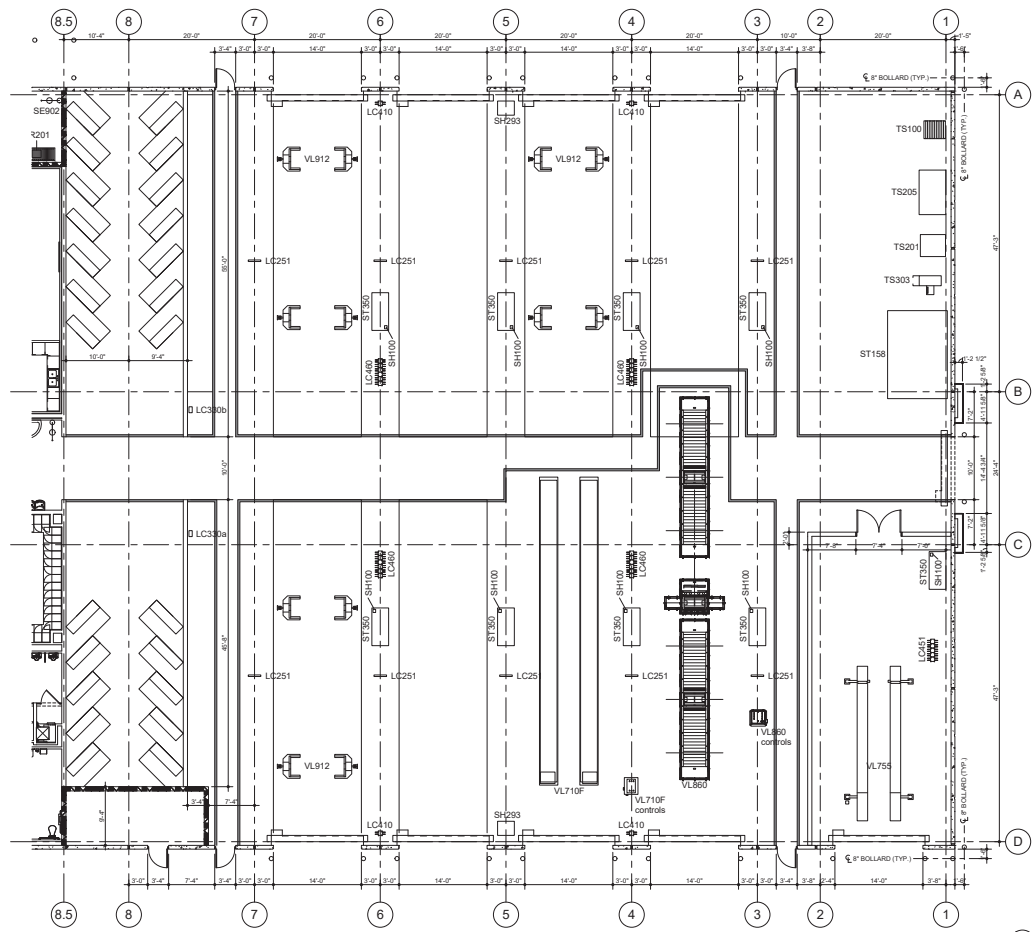
APRIL W. PONIKVAR AR26407
DRAFTED BY: MB
ARCHITECT'S PROJECT NO.: 11046

DATE: 29 March 2013

REVISION DATES:

| No. | Description | Date |
|-----|-------------|------|
| | | |
| | | |
| | | |

PLANS CHECKED BY: [blank]
DATE CHECKED: [blank]
ARCHITECTURAL: [blank]
DIMENSION PLAN - FIRST FLOOR (SOUTH BAYS)



DIMENSION PLAN - FIRST FLOOR (SOUTH BAYS)
1/8" = 1'-0"

RTS BUS FLEET MAINTENANCE & OPERATIONS FACILITY

Gainesville, Florida

for
 City of Gainesville

RECORD DRAWING:
 THIS RECORD DRAWING IS BASED ON INFORMATION CONTAINED IN THE CONTRACT AND ADDENDUMS TO THE ARCHITECTURE AND ENGINEERING AGREEMENT AND THE ACCURACY OF THIS RECORD DRAWING CONTRACTOR SHALL BE RESPONSIBLE FOR.

CONFORMED DOCUMENTS

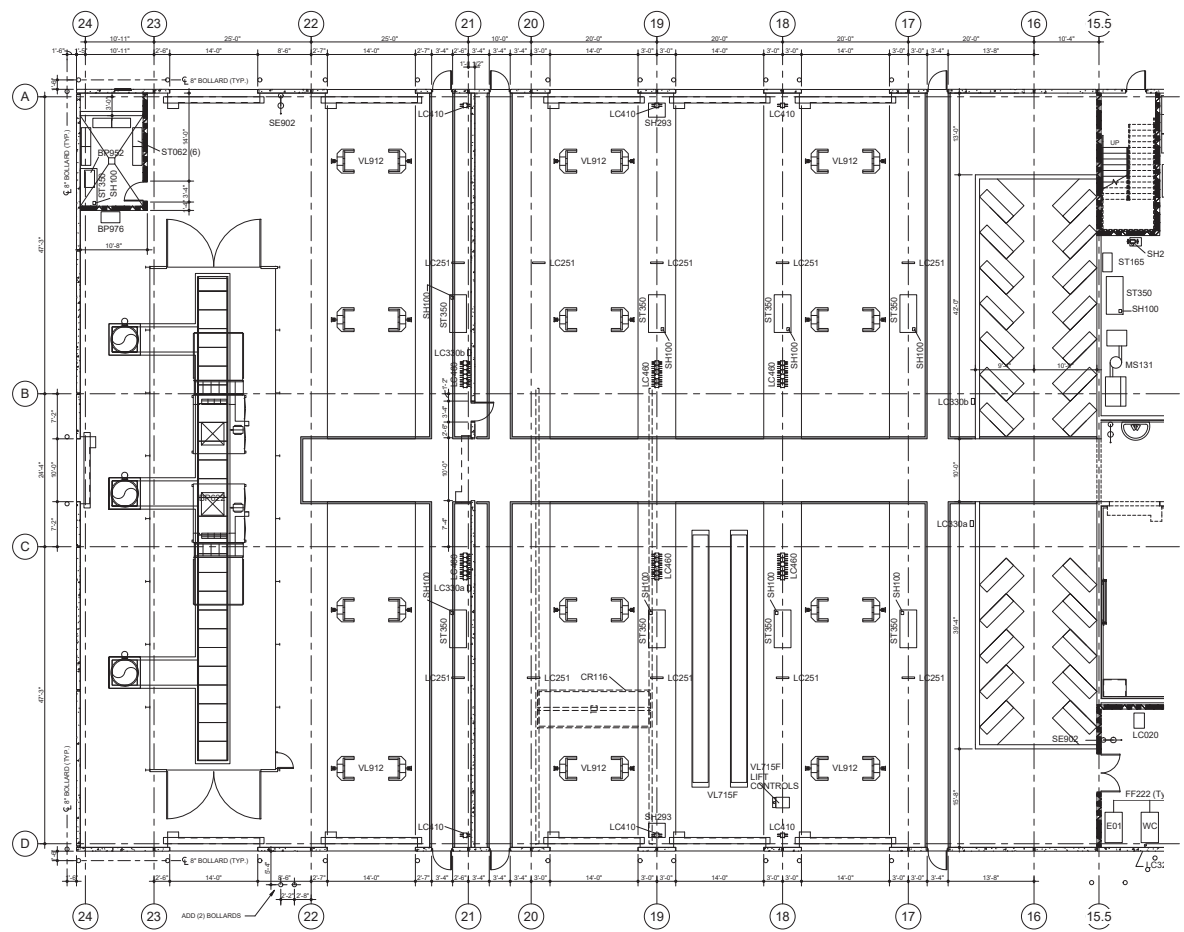
APRIL W. PONIKVAR
 ARCH2407
 DRAFTED BY: MB
 ARCHITECT'S PROJECT NO.: 11046

DATE: 29 March 2013

REVISION DATES:

| No. | Description | Date |
|-----|-------------|------|
| | | |
| | | |
| | | |

PLANS CHECKED BY:
 DATE CHECKED:
 ARCHITECTURAL:
 DIMENSION PLAN - FIRST FLOOR (NORTH BAYS)

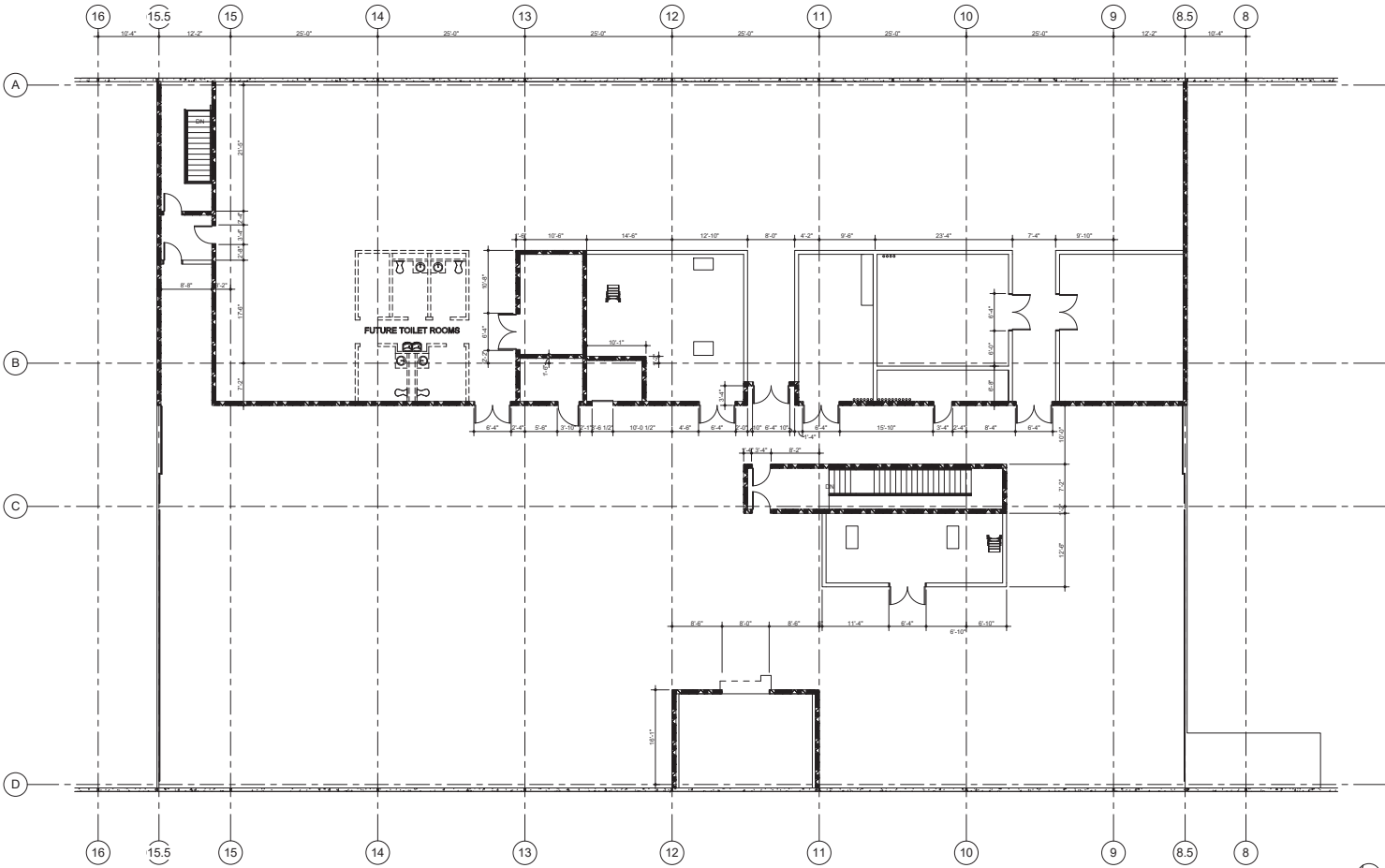


DIMENSION PLAN - FIRST FLOOR
 (NORTH BAYS)
 1/8" = 1'-0"

RTS BUS FLEET MAINTENANCE & OPERATIONS FACILITY

Gainesville, Florida

for
City of Gainesville



RECORD DRAWING:
THIS RECORD DRAWING IS BASED ON INFORMATION SUPPLIED BY THE CONTRACTOR AND DOES NOT CONSTITUTE THE ARCHITECT'S ASSUMED RESPONSIBILITY FOR THE ACCURACY OF THIS RECORD DRAWING.
CONTRACTOR: GUNDEL CONSTRUCTION
DATE: 02.13.13

CONFORMED DOCUMENTS

APRIL W. PONIKVAR
ARCHITECT
DRAFTED BY: MB
ARCHITECT'S PROJECT NO.: 11046

DATE: 29 March 2013

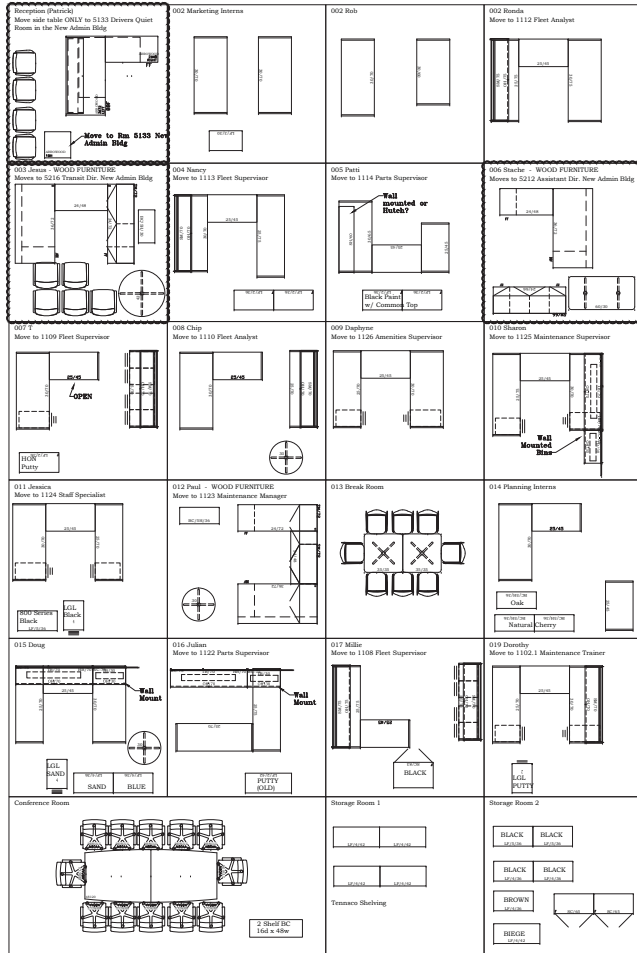
REVISION DATES:

| No. | Description | Date |
|-----|-------------|------|
| | | |
| | | |
| | | |

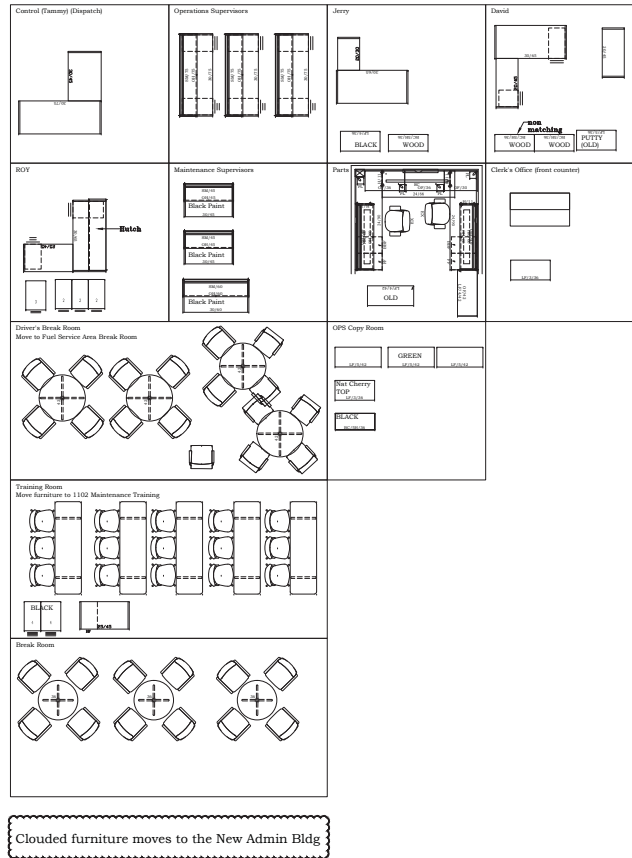
PLANS CHECKED BY:
DATE CHECKED:
ARCHITECTURAL:
DIMENSION PLAN - SECOND FLOOR (CORE)

1 DIMENSION PLAN - SECOND FLOOR
1/8" = 1'-0"

Existing: Current Admin Bldg 100 SE 10th



Existing: Current OPS



| DATE | REVISION |
|------|----------|
| | |
| | |
| | |
| | |
| | |
| | |
| | |
| | |
| | |
| | |

RECORD DRAWING:
 THIS "AS-BUILT" DRAWING IS BASED ON INFORMATION COMPILED BY THE CONTRACTOR AND GIVEN TO BE ACCURATE. THE CONTRACTOR ASSUMES NO RESPONSIBILITY FOR THE ACCURACY OF THIS "AS-BUILT" DRAWING.
 CONTRACTOR: CHARLES PERRY PARTNERS, INC.
 DATE: 23 FEB. 2015

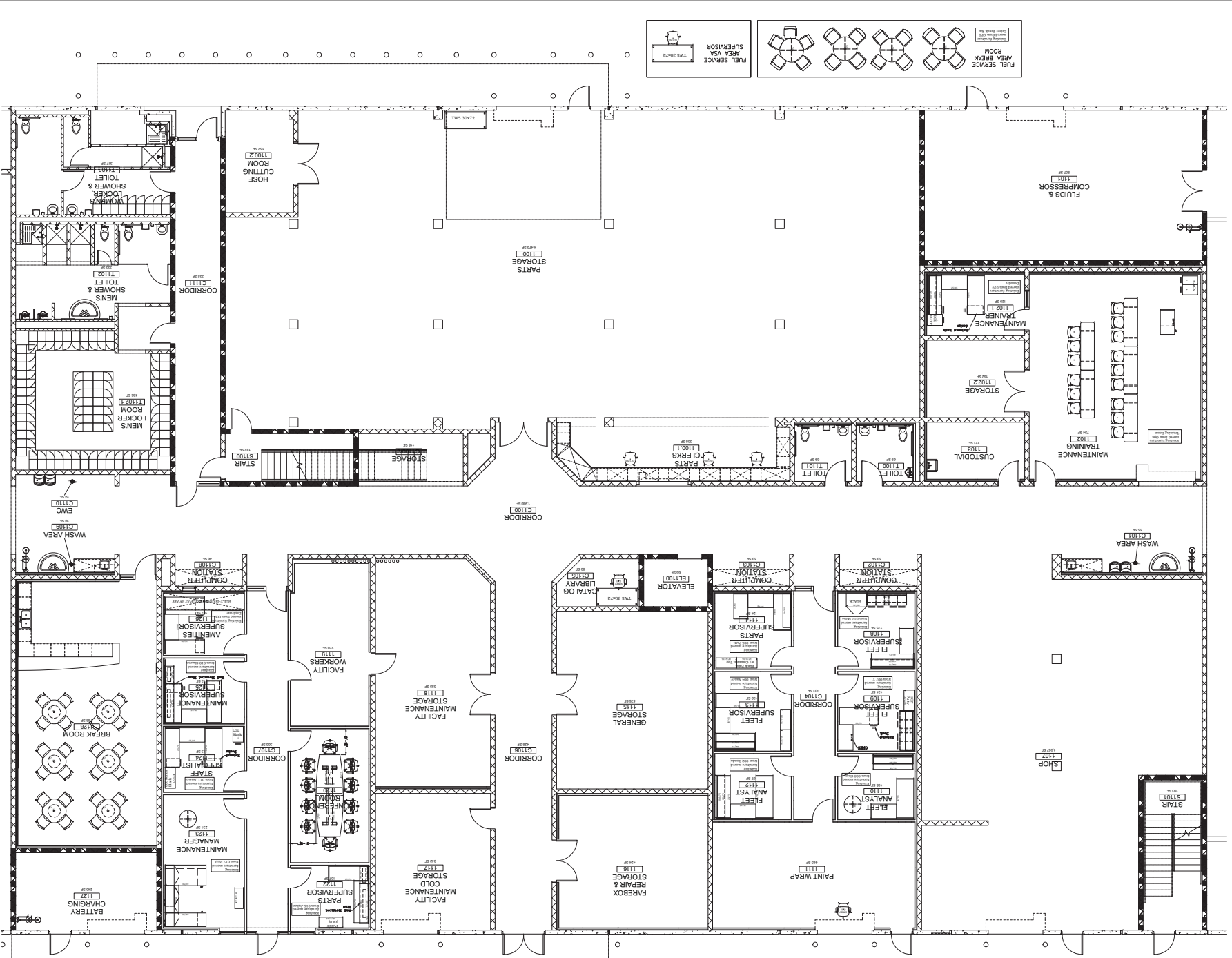
This drawing was prepared based on information that was provided by the user. It is the responsibility of the user to verify the content and accuracy of the drawing and its specification. This drawing is the property of OEC Business Interiors and shall not be used for other business interiors and shall not be reproduced or used to solicit bids or quotes from other dealers or manufacturers.

Customer Signature _____

| | |
|-----------------|-----------------------|
| Sheet: IAI.71 | Div Scale: 1/4" = 10' |
| Date: 1.2.18.12 | Specified By: AIT |
| Created By: BLM | Checked By: BLM |
| Quote No.: | Page: 1 of 2 |

Furnishings Floor Plan
 First Floor - Existing
 City of Gainesville

OEC Business Interiors
 The Workplace Professionals
 1601 NW 80th Blvd
 Gainesville, FL 32606
 P: 352.332.1192
 F: 352.333.8002
 www.OEC-FL.com



OCB Business Interiors
 The Washington Production Firm
 1601 NW 80th Blvd
 Gainesville, FL 32606
 P: 352.332.1192
 F: 352.333.8002
 www.ocb-fl.com

Furnishings Floor Plan
 First Floor - Proposed
 City of Gainesville

Sheet: 1A1.72
 Date: 12.18.12
 Drawn Scale: 3/16" = 1'-0"
 Checked By: BLM
 Specified By: AVM
 Quote No.: 2 of 2

This drawing was prepared based on information that was provided by the client user. It is the responsibility of the client user to verify the content and status of this drawing against the specific details of the project and to ensure that all OCB Business Interiors and shall not be reproduced or used to solicit bids or quotes from other dealers or manufacturers.

| DATE | REVISION | BY |
|----------|----------------|----|
| 12.18.12 | RECORD DRAWING | |
| | | |
| | | |
| | | |
| | | |
| | | |

1A4.10

REVISIONS TABLE

| NO. | DESCRIPTION | DATE |
|-----|-------------|------|
| | | |
| | | |
| | | |

DATE: 23 MAR 2013

DESIGNED BY: **DMB**

CHECKED BY: **DMB**

DATE CHECKED: **DMB**

PROJECT NO.: 11068

PROJECT NAME: **APRIL W. JOHNSON**

ARCHITECT: **APRIL W. JOHNSON**

SCALE: **AS SHOWN**

CONFORMED DOCUMENTS

RECORD DRAWING

DATE: 03/23/13

CONTRACT: 11068

PROJECT: APRIL W. JOHNSON

ARCHITECT: APRIL W. JOHNSON

SCALE: AS SHOWN

DATE CHECKED: 03/23/13

DESIGNED BY: DMB

CHECKED BY: DMB

RECORD DRAWING

DATE: 03/23/13

CONTRACT: 11068

PROJECT: APRIL W. JOHNSON

ARCHITECT: APRIL W. JOHNSON

SCALE: AS SHOWN

DATE CHECKED: 03/23/13

DESIGNED BY: DMB

CHECKED BY: DMB

ARCHITECTS

AA 002085

720 NW 2ND AVENUE

CONWAYVILLE, FLORIDA 32005

PHONE: (386) 213-1318

FAX: (386) 213-1381

MAINTENANCE & OPERATIONS FACILITY

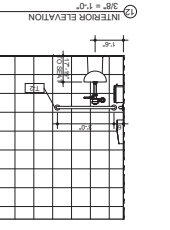
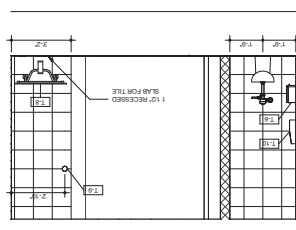
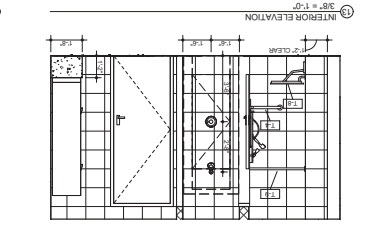
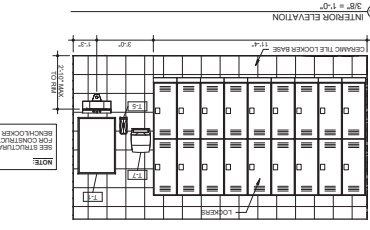
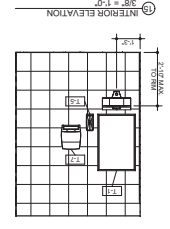
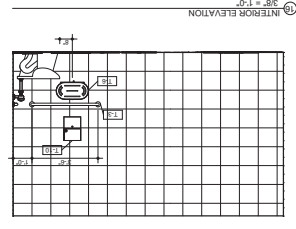
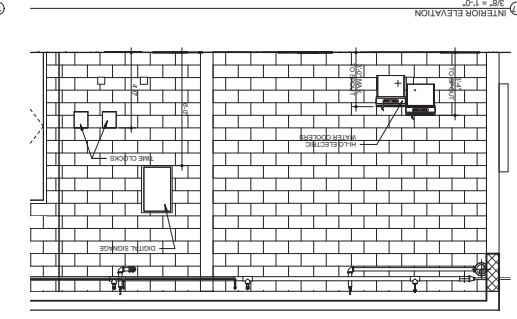
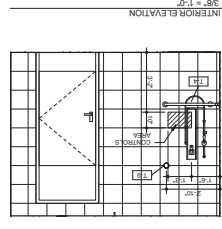
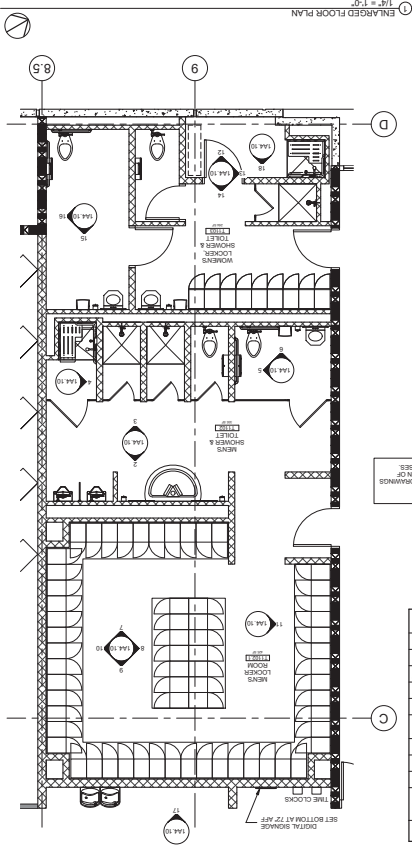
RTS BUS FLEET

MAINTENANCE & OPERATIONS FACILITY

City of Gainesville

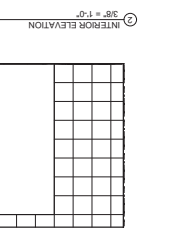
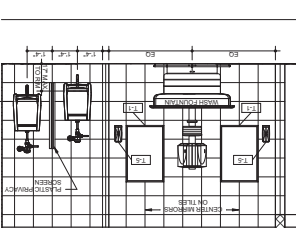
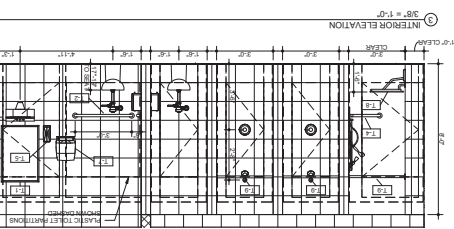
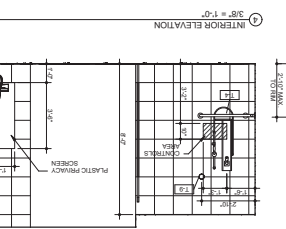
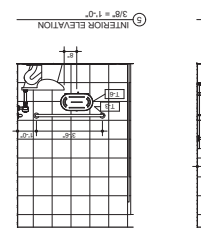
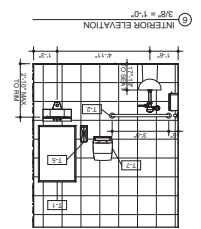
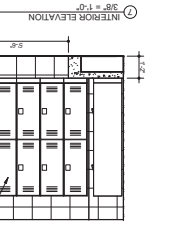
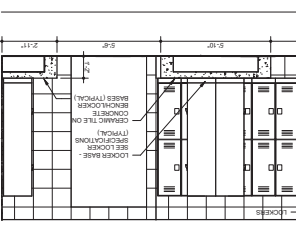
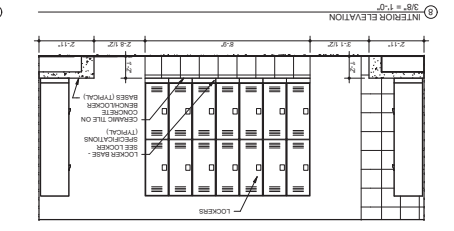
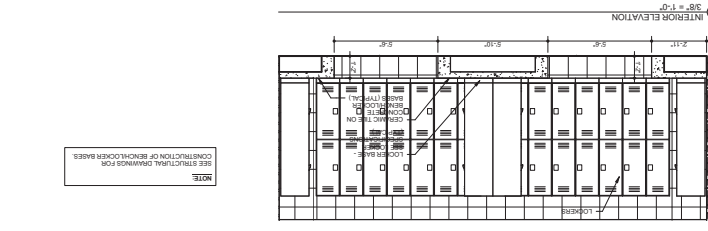
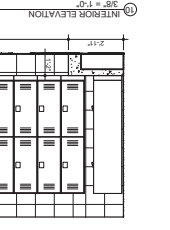
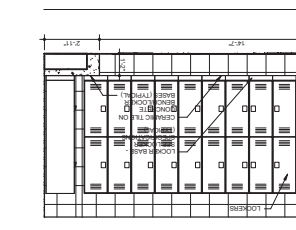
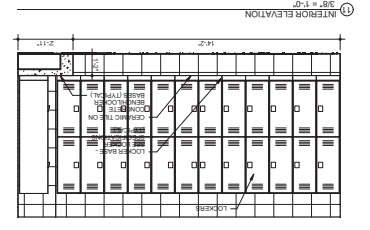
for City of Gainesville, Florida

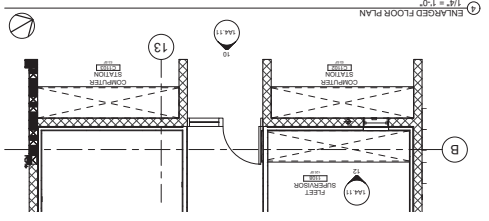
POKONAR ASSOCIATES



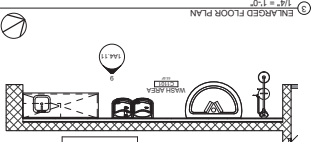
TOILET ACCESSORY SCHEDULE

| Type | Description | Manufacturer | Model |
|------|---|---------------------|------------|
| T-1 | Commercial Restroom (C.C.) 1 Mount Restroom | Waldley Corporation | 181-024862 |
| T-2 | Commercial Restroom (C.C.) 1 Mount C.C. of Bar at 1st | Waldley Corporation | 181-020780 |
| T-3 | Commercial Restroom (C.C.) 1 Mount C.C. of Bar at 1st | Waldley Corporation | 181-020780 |
| T-4 | Commercial Restroom (C.C.) 1 Mount C.C. of Bar at 1st | Waldley Corporation | 181-020780 |
| T-5 | Commercial Restroom (C.C.) 1 Mount C.C. of Bar at 1st | Waldley Corporation | 181-020780 |
| T-6 | Commercial Restroom (C.C.) 1 Mount C.C. of Bar at 1st | Waldley Corporation | 181-020780 |
| T-7 | Commercial Restroom (C.C.) 1 Mount C.C. of Bar at 1st | Waldley Corporation | 181-020780 |
| T-8 | Commercial Restroom (C.C.) 1 Mount C.C. of Bar at 1st | Waldley Corporation | 181-020780 |
| T-9 | Commercial Restroom (C.C.) 1 Mount C.C. of Bar at 1st | Waldley Corporation | 181-020780 |
| T-10 | Commercial Restroom (C.C.) 1 Mount C.C. of Bar at 1st | Waldley Corporation | 181-020780 |
| T-11 | Commercial Restroom (C.C.) 1 Mount C.C. of Bar at 1st | Waldley Corporation | 181-020780 |
| T-12 | Commercial Restroom (C.C.) 1 Mount C.C. of Bar at 1st | Waldley Corporation | 181-020780 |
| T-13 | Commercial Restroom (C.C.) 1 Mount C.C. of Bar at 1st | Waldley Corporation | 181-020780 |
| T-14 | Commercial Restroom (C.C.) 1 Mount C.C. of Bar at 1st | Waldley Corporation | 181-020780 |
| T-15 | Commercial Restroom (C.C.) 1 Mount C.C. of Bar at 1st | Waldley Corporation | 181-020780 |
| T-16 | Commercial Restroom (C.C.) 1 Mount C.C. of Bar at 1st | Waldley Corporation | 181-020780 |
| T-17 | Commercial Restroom (C.C.) 1 Mount C.C. of Bar at 1st | Waldley Corporation | 181-020780 |
| T-18 | Commercial Restroom (C.C.) 1 Mount C.C. of Bar at 1st | Waldley Corporation | 181-020780 |
| T-19 | Commercial Restroom (C.C.) 1 Mount C.C. of Bar at 1st | Waldley Corporation | 181-020780 |
| T-20 | Commercial Restroom (C.C.) 1 Mount C.C. of Bar at 1st | Waldley Corporation | 181-020780 |
| T-21 | Commercial Restroom (C.C.) 1 Mount C.C. of Bar at 1st | Waldley Corporation | 181-020780 |
| T-22 | Commercial Restroom (C.C.) 1 Mount C.C. of Bar at 1st | Waldley Corporation | 181-020780 |
| T-23 | Commercial Restroom (C.C.) 1 Mount C.C. of Bar at 1st | Waldley Corporation | 181-020780 |
| T-24 | Commercial Restroom (C.C.) 1 Mount C.C. of Bar at 1st | Waldley Corporation | 181-020780 |
| T-25 | Commercial Restroom (C.C.) 1 Mount C.C. of Bar at 1st | Waldley Corporation | 181-020780 |
| T-26 | Commercial Restroom (C.C.) 1 Mount C.C. of Bar at 1st | Waldley Corporation | 181-020780 |
| T-27 | Commercial Restroom (C.C.) 1 Mount C.C. of Bar at 1st | Waldley Corporation | 181-020780 |
| T-28 | Commercial Restroom (C.C.) 1 Mount C.C. of Bar at 1st | Waldley Corporation | 181-020780 |
| T-29 | Commercial Restroom (C.C.) 1 Mount C.C. of Bar at 1st | Waldley Corporation | 181-020780 |
| T-30 | Commercial Restroom (C.C.) 1 Mount C.C. of Bar at 1st | Waldley Corporation | 181-020780 |

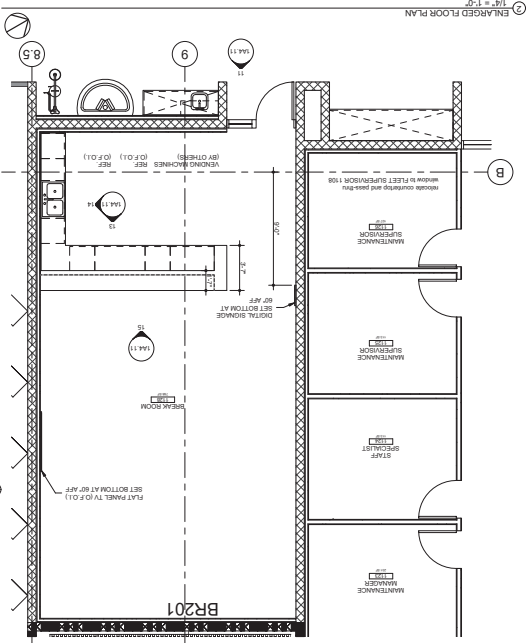




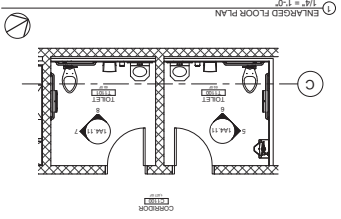
1 ENLARGED FLOOR PLAN 1/4" = 1'-0"



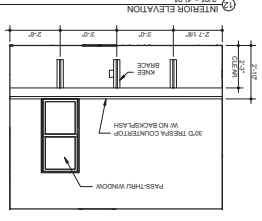
2 ENLARGED FLOOR PLAN 1/4" = 1'-0"



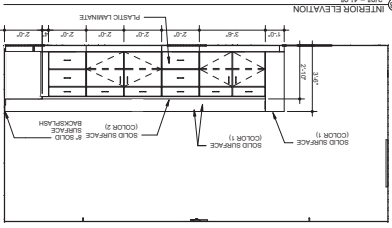
3 ENLARGED FLOOR PLAN 1/4" = 1'-0"



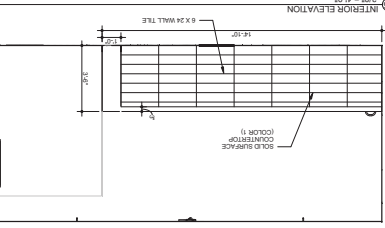
4 ENLARGED FLOOR PLAN 1/4" = 1'-0"



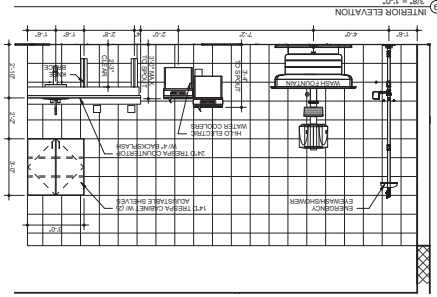
1 INTERIOR ELEVATION 3/8" = 1'-0"



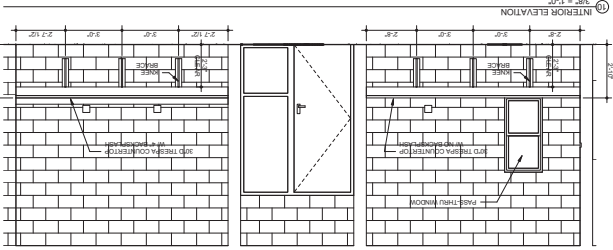
2 INTERIOR ELEVATION 3/8" = 1'-0"



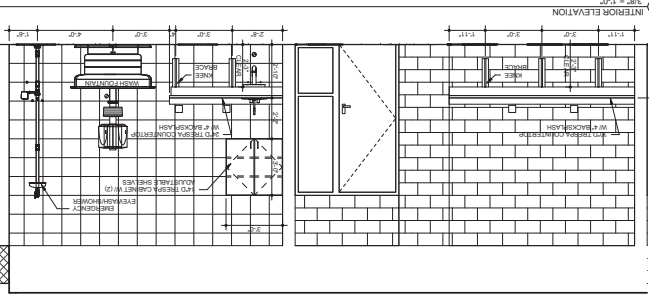
3 INTERIOR ELEVATION 3/8" = 1'-0"



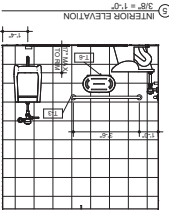
4 INTERIOR ELEVATION 3/8" = 1'-0"



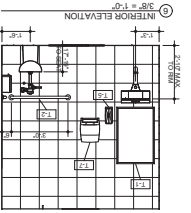
5 INTERIOR ELEVATION 3/8" = 1'-0"



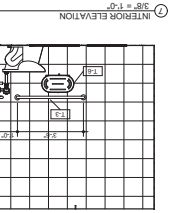
6 INTERIOR ELEVATION 3/8" = 1'-0"



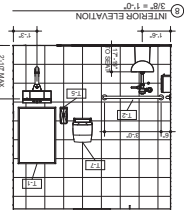
7 INTERIOR ELEVATION 3/8" = 1'-0"



8 INTERIOR ELEVATION 3/8" = 1'-0"



9 INTERIOR ELEVATION 3/8" = 1'-0"



10 INTERIOR ELEVATION 3/8" = 1'-0"

NOTE:
SEE SCHEDULE 144-1 FOR TOILET ACCESSORY

APRIL W. PONIKVAR ARCHITECT
 11088 N.W. 23rd Avenue
 Gainesville, FL 32609
 PHONE: (352) 339-1331
 FAX: (352) 339-1338

CONFORMED DOCUMENTS

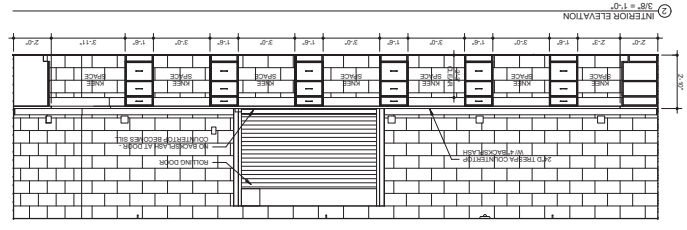
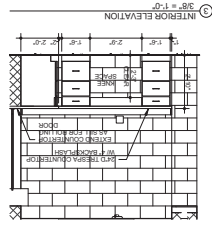
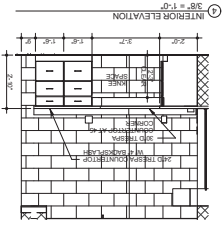
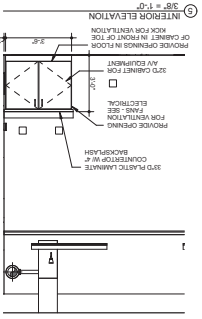
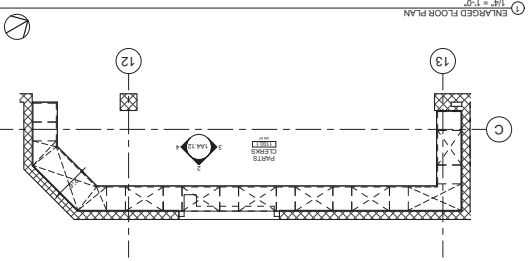
RECORD DRAWING:
 THIS DRAWING IS THE PROPERTY OF APRIL W. PONIKVAR ARCHITECTS. IT IS TO BE USED ONLY FOR THE PROJECT AND SITE SPECIFICALLY IDENTIFIED HEREON. IT IS NOT TO BE REPRODUCED, COPIED, OR TRANSMITTED IN ANY FORM OR BY ANY MEANS, ELECTRONIC OR MECHANICAL, INCLUDING PHOTOCOPYING, RECORDING, OR BY ANY INFORMATION STORAGE AND RETRIEVAL SYSTEM, WITHOUT THE WRITTEN PERMISSION OF APRIL W. PONIKVAR ARCHITECTS.

ARCHITECTS
 11088 N.W. 23rd Avenue
 Gainesville, Florida 32609
 PHONE: (352) 339-1331
 FAX: (352) 339-1338

PONIKVAR ASSOCIATES
 MAINTENANCE & OPERATIONS FACILITY
 for
 City of Gainesville, Florida

RTS BUS FLEET MAINTENANCE & OPERATIONS FACILITY

1A4.12



REVISIONS

| NO. | DESCRIPTION | DATE |
|-----|-------------|------|
| | | |
| | | |
| | | |
| | | |

DATE: 23 MAR 2013
 ARCHITECTS PROJECT NO.: 11086
 DRAWN BY: MB
 CHECKED BY: []
 APPROVED BY: []

CONFORMED DOCUMENTS

RECORD DRAWING:
 THE CONTRACTOR SHALL BE RESPONSIBLE FOR THE ACCURACY OF THE INFORMATION CONTAINED ON THIS DRAWING. THE CONTRACTOR SHALL BE RESPONSIBLE FOR THE ACCURACY OF THE INFORMATION CONTAINED ON THIS DRAWING. THE CONTRACTOR SHALL BE RESPONSIBLE FOR THE ACCURACY OF THE INFORMATION CONTAINED ON THIS DRAWING.

ARCHITECTS
 544 002888
 SUITE 205
 GAINESVILLE, FLORIDA 32601
 PHONE: (352) 373-1381
 FAX: (352) 373-1378

RTS BUS
 FLEET
 MAINTENANCE
 & OPERATIONS
 FACILITY
 Gainesville, Florida
 for
 City of
 Gainesville



3A1.10

| NO. | DESCRIPTION | DATE |
|-----|-------------|------|
| | | |
| | | |
| | | |

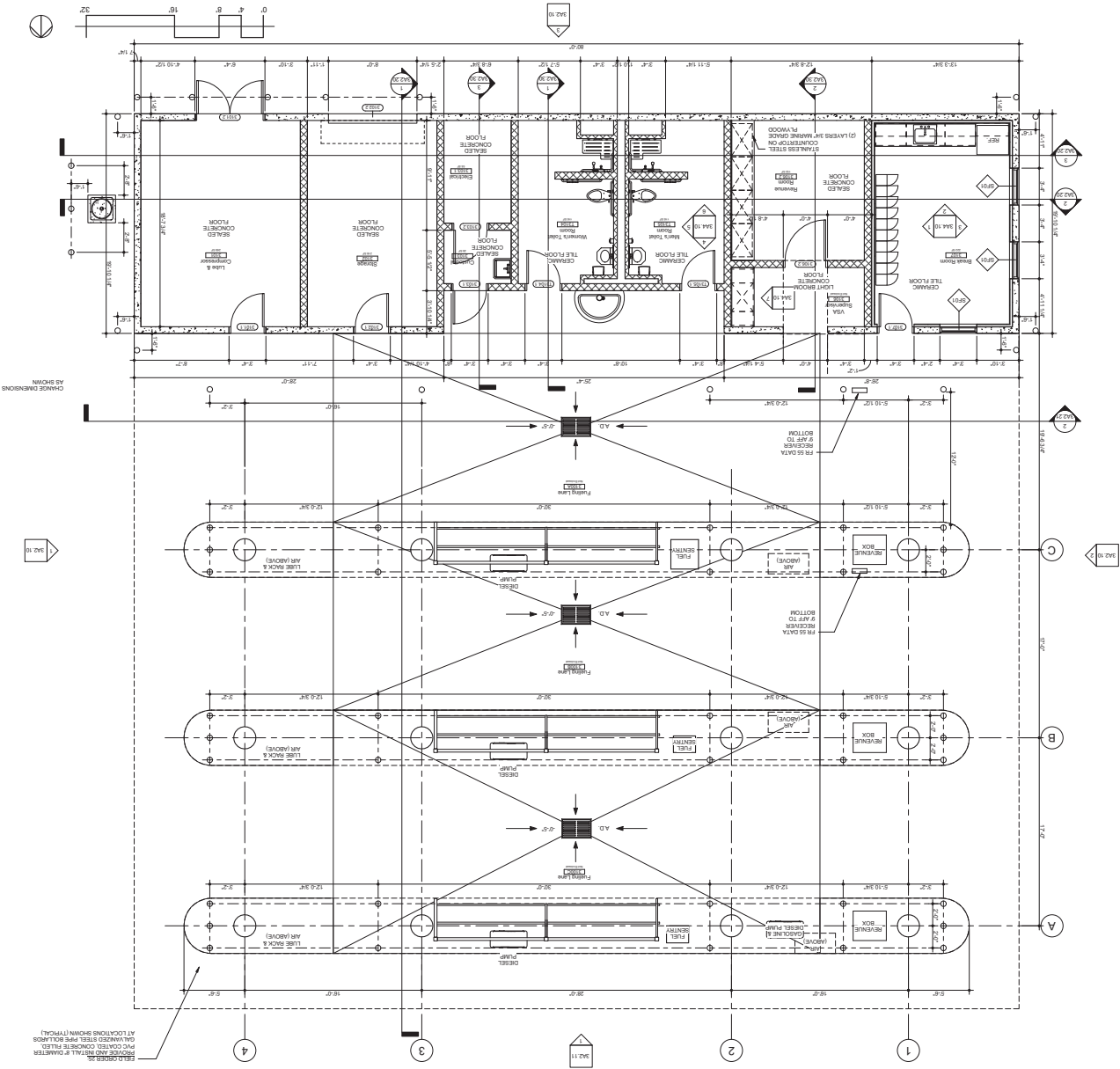
DATE: 29 MAR 2013
 ARCHITECTS PROJECT NO.: 11068
 DRAWN BY: JAF
 APPROVED BY: [Signature]

CONFORMED DOCUMENTS

RECORD DRAWING:
 THE CONTRACTOR SHALL BE RESPONSIBLE FOR VERIFYING THE ACCURACY OF THIS RECORD DRAWING. THE CONTRACTOR SHALL BE RESPONSIBLE FOR OBTAINING ALL NECESSARY PERMITS AND APPROVALS FROM THE APPROPRIATE AGENCIES. THE CONTRACTOR SHALL BE RESPONSIBLE FOR OBTAINING ALL NECESSARY PERMITS AND APPROVALS FROM THE APPROPRIATE AGENCIES.

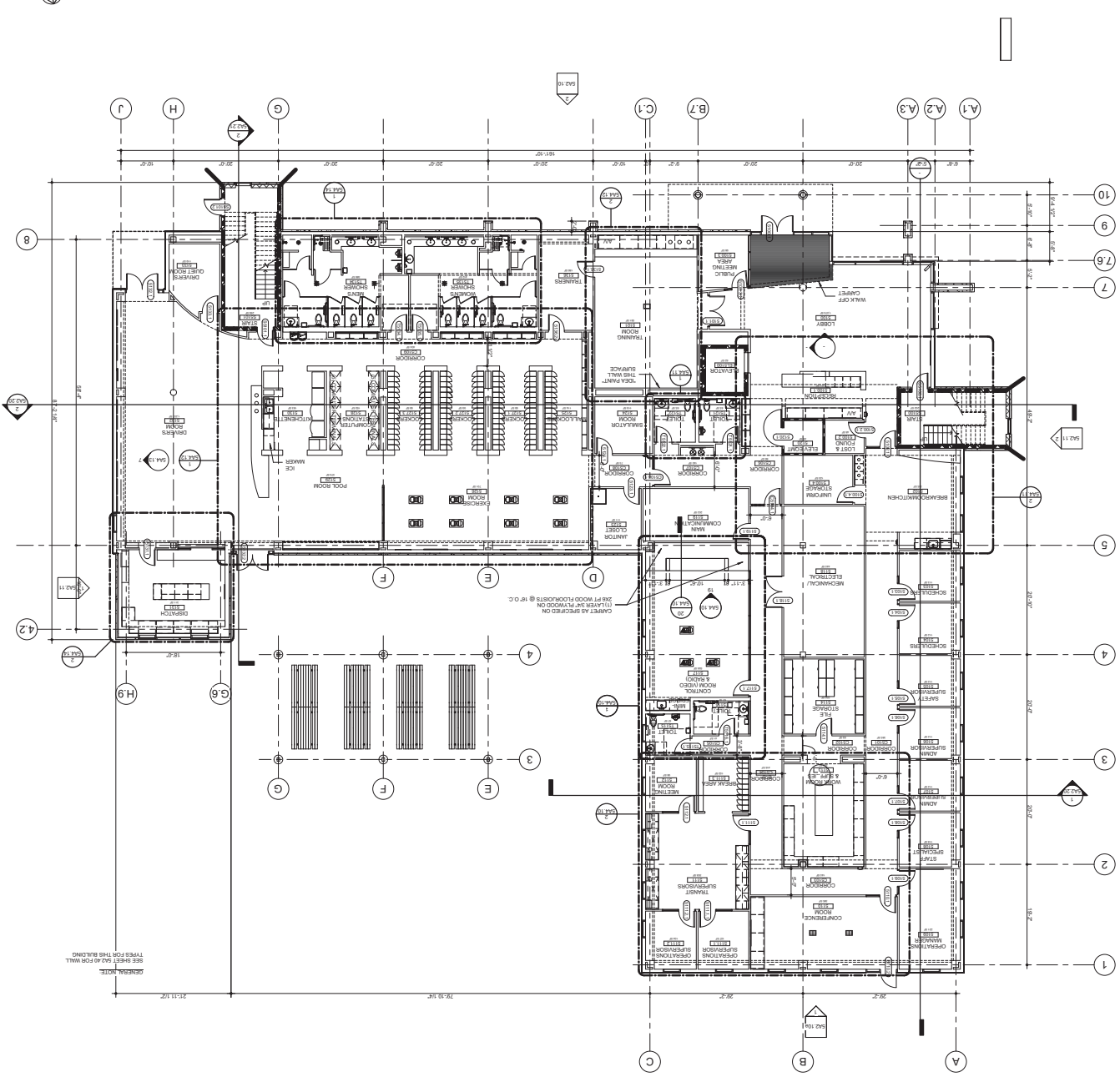
ARCHITECTS
 1200 NW 40th Avenue
 Suite 505
 Gainesville, Florida 32609
 PHONE: (352) 339-1381
 FAX: (352) 339-1378

PONIKVAR ASSOCIATES



FIELD NOTES:
 PROVIDE REINFORCING BARS AT ALL JOINTS AND CONNECTIONS.
 PROVIDE REINFORCING BARS AT ALL JOINTS AND CONNECTIONS.
 PROVIDE REINFORCING BARS AT ALL JOINTS AND CONNECTIONS.

ARCHITECTURAL FLOOR PLAN - FIRST FLOOR
1/8" = 1'-0"



5A1.11

| REVISION DATA | |
|---------------|-------------|
| NO. | DESCRIPTION |
| | |
| | |

DATE: 29 MAR 2013
 ARCHITECTS PROJECT NO.: 11088
 DRAWN BY: [Signature]
 APPROVED BY: [Signature]

CONFORMED DOCUMENTS

RECORD DRAWING:
 THIS DRAWING IS THE PROPERTY OF THE ARCHITECT AND SHALL BE KEPT IN HIS OR HER OFFICE. IT IS TO BE USED ONLY FOR THE PROJECT AND NOT TO BE REPRODUCED OR TRANSMITTED IN ANY FORM OR BY ANY MEANS, ELECTRONIC OR MECHANICAL, INCLUDING PHOTOCOPYING, RECORDING, OR BY ANY INFORMATION STORAGE AND RETRIEVAL SYSTEM.

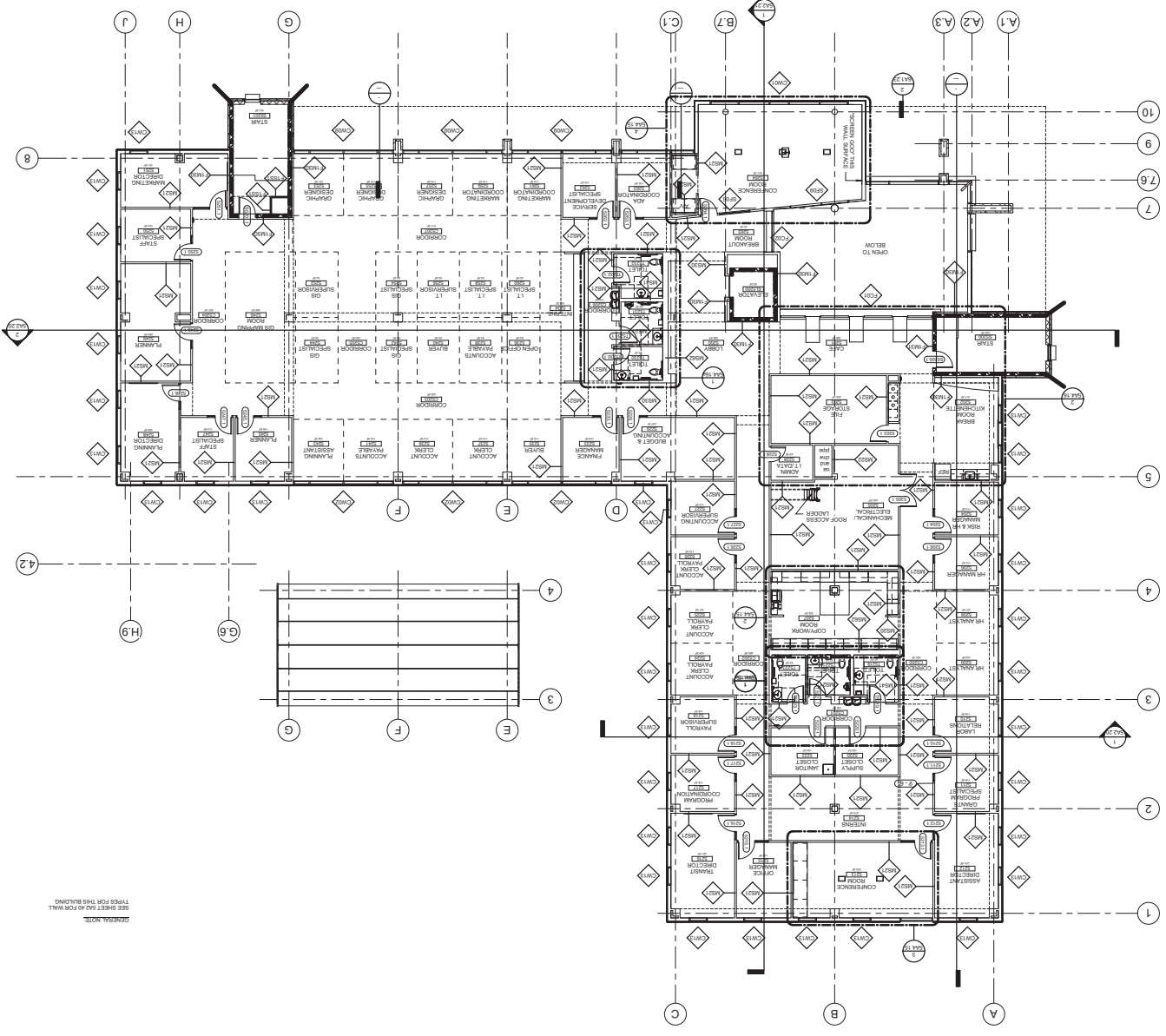
ARCHITECTS
 AA 002086
 720 SW 2ND AVENUE
 SUITE 505
 GAINESVILLE, FLORIDA 32601
 PHONE: (352) 370-1393
 FAX: (352) 370-1394

RTS BUS
 FLEET
 MAINTENANCE
 & OPERATIONS
 FACILITY
 Gainesville, Florida
 for
 City of
 Gainesville

PONIKVAR ASSOCIATES

ARCHITECTURAL FLOOR PLAN - SECOND FLOOR

1/8" = 1'-0"



5A1.12

REVISIONS

| NO. | DESCRIPTION | DATE |
|-----|-------------|------|
| | | |
| | | |
| | | |

DATE: 29 MAR 2013
 ARCHITECTS PROJECT NO.: 11088
 DRAWN BY: [Signature]
 APPROVED BY: [Signature]

CONFORMED DOCUMENTS

RECORD DRAWING:
 THIS DRAWING IS THE PROPERTY OF THE ARCHITECTS AND IS TO BE USED ONLY FOR THE PROJECT AND SITE SPECIFICALLY IDENTIFIED HEREIN. ANY REUSE OR REPRODUCTION OF THIS DRAWING WITHOUT THE WRITTEN PERMISSION OF THE ARCHITECTS IS PROHIBITED.

ARCHITECTS
 AA OGDEN
 750 SW 2ND AVENUE
 GAINESVILLE, FL 32601
 PHONE: (352) 373-1378
 FAX: (352) 373-1378

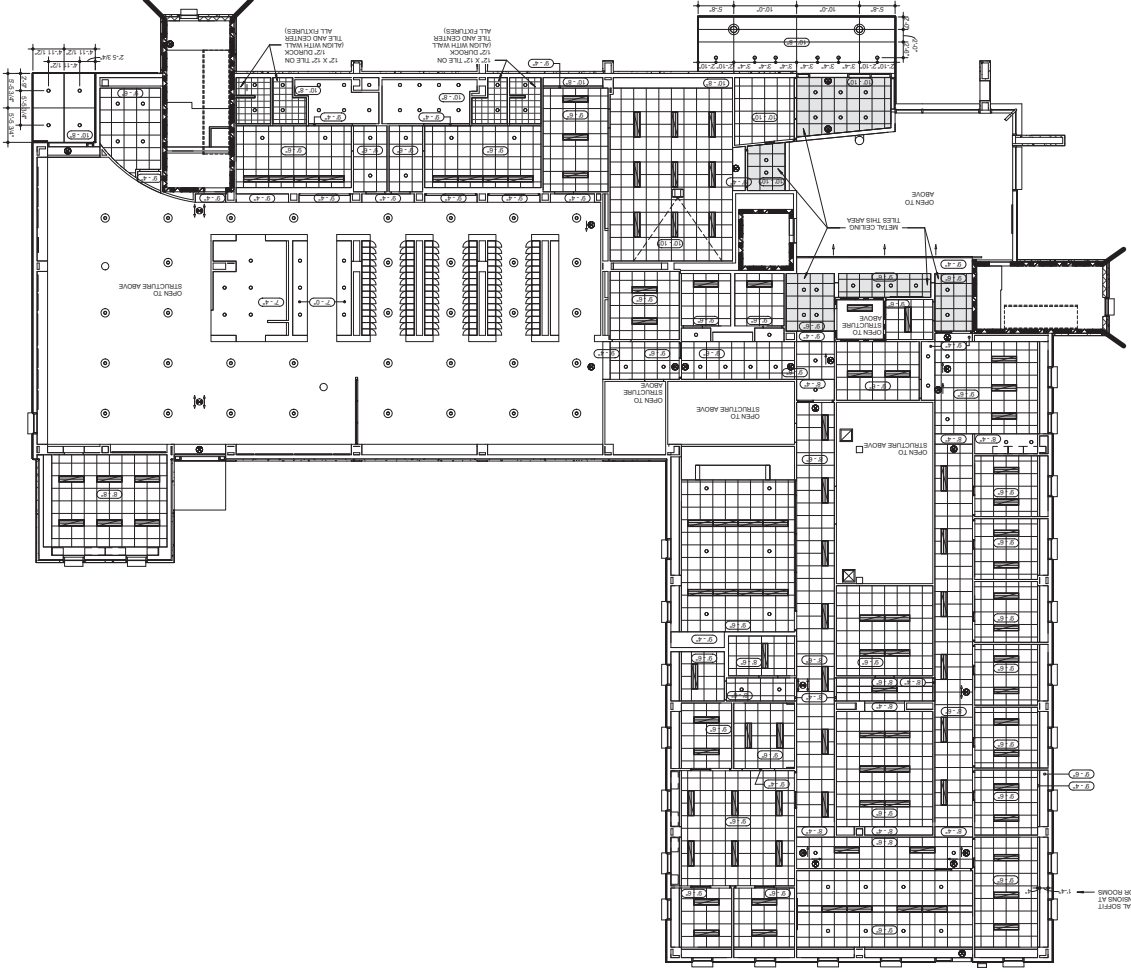
for
 City of
 Gainesville
 Florida
 Gainesville,
 MAINTENANCE
 & OPERATIONS
 FACILITY
 FLEET
 RTS BUS

SEE SHEET 5A2.01 FOR WALL
 TYPES FOR THIS BUILDING.



5A1.21

REFLECTED CEILING PLAN - FIRST FLOOR
1/8" = 1'-0"



REVISIONS

| NO. | DESCRIPTION | DATE |
|-----|-------------|------|
| | | |
| | | |
| | | |

DATE: 29 MAR 2018
 PROJECT NO.: 11088
 DRAFTED BY: JAS
 APPROVED BY: JAS

CONFORMED DOCUMENTS

APPROVED BY: JAS

RECORD DRAWING:

THIS DRAWING IS THE PROPERTY OF THE ARCHITECT AND IS TO BE USED ONLY FOR THE PROJECT AND SITE SPECIFICALLY IDENTIFIED HEREIN. ANY REUSE OR REPRODUCTION OF THIS DRAWING WITHOUT THE WRITTEN CONSENT OF THE ARCHITECT IS PROHIBITED.

ARCHITECTS

250 SW 2ND AVENUE
 GAINESVILLE, FL 32601
 PHONE: (352) 339-1381
 FAX: (352) 339-1381

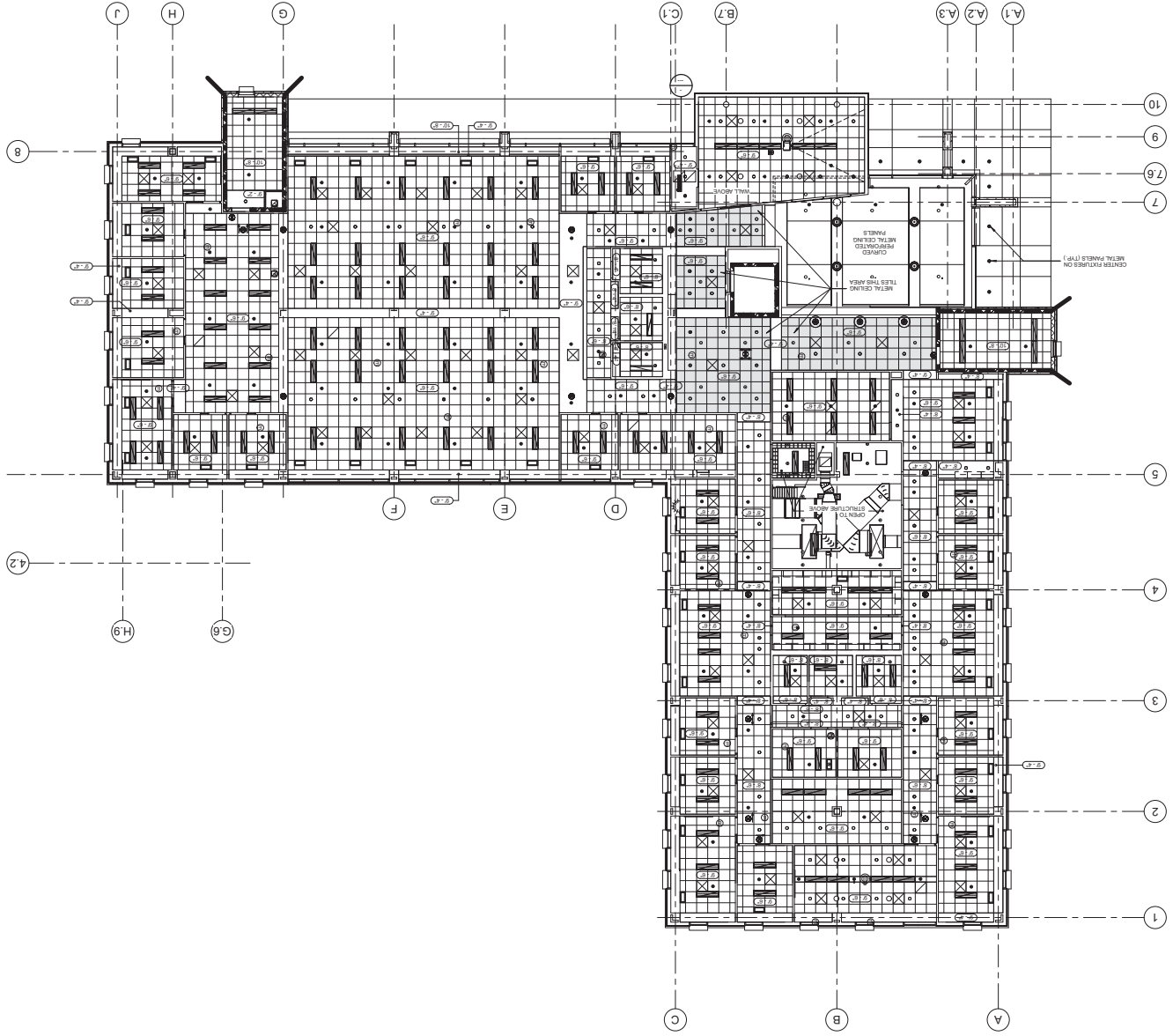
RTS BUS
 FLEET
 MAINTENANCE
 & OPERATIONS
 FACILITY

Gainesville,
 Florida
 for
 City of
 Gainesville



5A1.22

REFLECTED CEILING PLAN - SECOND FLOOR



| NO. | DESCRIPTION | DATE |
|-----|-------------|------|
| | | |
| | | |
| | | |

DATE: 23 MAR 2013
 ARCHITECTS PROJECT NO.: 11048
 DRAWN BY: [Signature]
 APPROVED BY: [Signature]

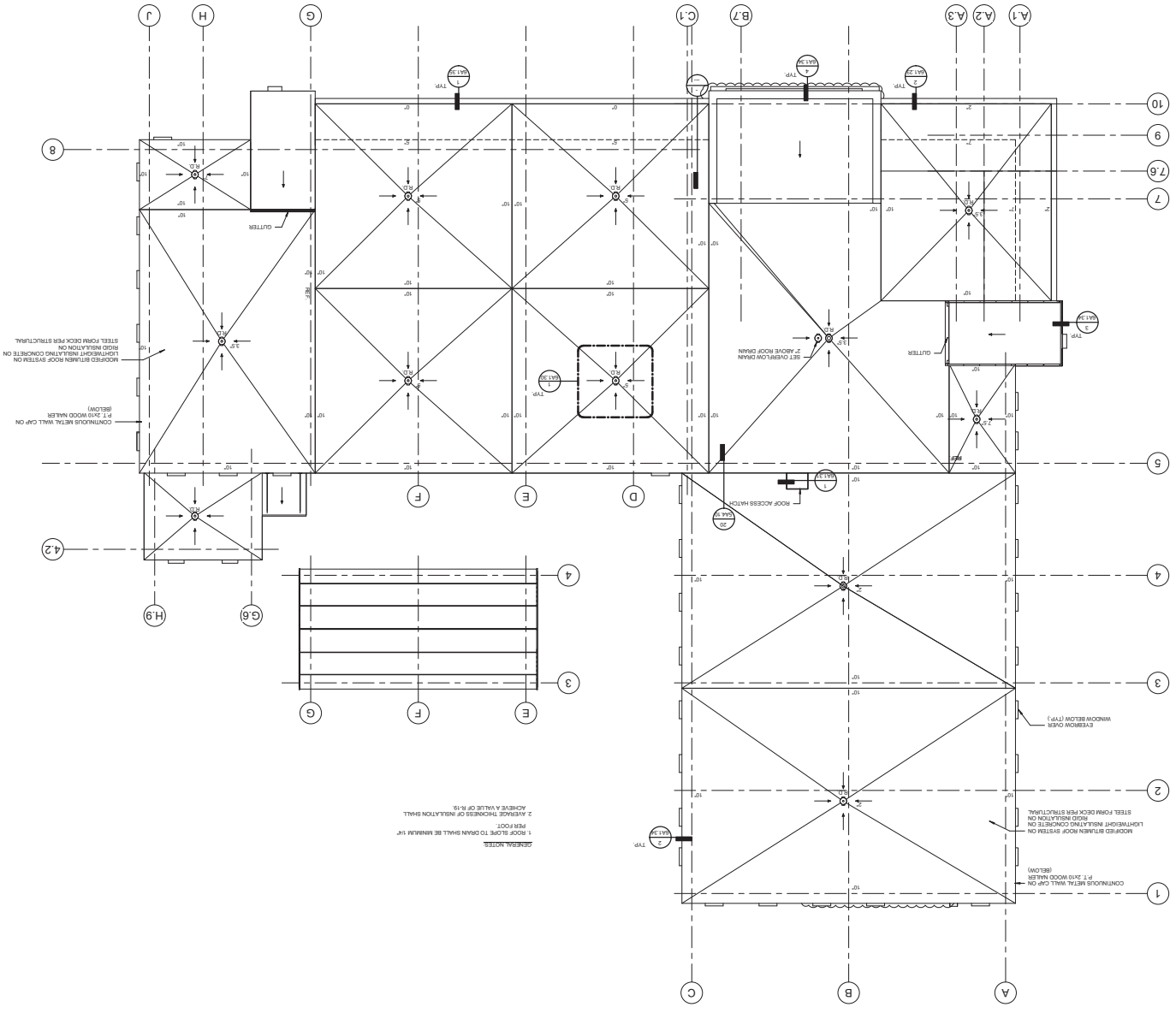
CONFORMED DOCUMENTS

RECORD DRAWING:
 THIS DRAWING IS THE PROPERTY OF THE ARCHITECT AND IS TO BE USED ONLY FOR THE PROJECT AND SITE SPECIFICALLY IDENTIFIED HEREIN. IT IS NOT TO BE REPRODUCED OR TRANSMITTED IN ANY FORM OR BY ANY MEANS, ELECTRONIC OR MECHANICAL, INCLUDING PHOTOCOPYING, RECORDING, OR BY ANY INFORMATION STORAGE AND RETRIEVAL SYSTEM.

ARCHITECTS
 2500 NW 20th AVENUE
 SUITE 200
 GAINESVILLE FL 32609
 PHONE: (352) 374-1331
 FAX: (352) 374-1331

RTS BUS FLEET MAINTENANCE & OPERATIONS FACILITY
 Gainesville, Florida
 for City of Gainesville





GENERAL NOTES:
 1. ROOF SLOPE TO DRAIN SHALL BE MINIMUM 1/4" PER FOOT.
 2. INSULATION THICKNESS OR INSTALLATION SHALL ACHIEVE A VALUE OF R-19.

| NO. | DESCRIPTION | DATE |
|-----|-------------|------|
| | | |
| | | |
| | | |

REVISION DATE: 29 MAR 2013
 DRAWN BY: JMD
 CHECKED BY: JMD
 PROJECT NO.: 11088

APPROVALS:
 ARCHITECT: [Signature]
 ENGINEER: [Signature]
 CONTRACTOR: [Signature]

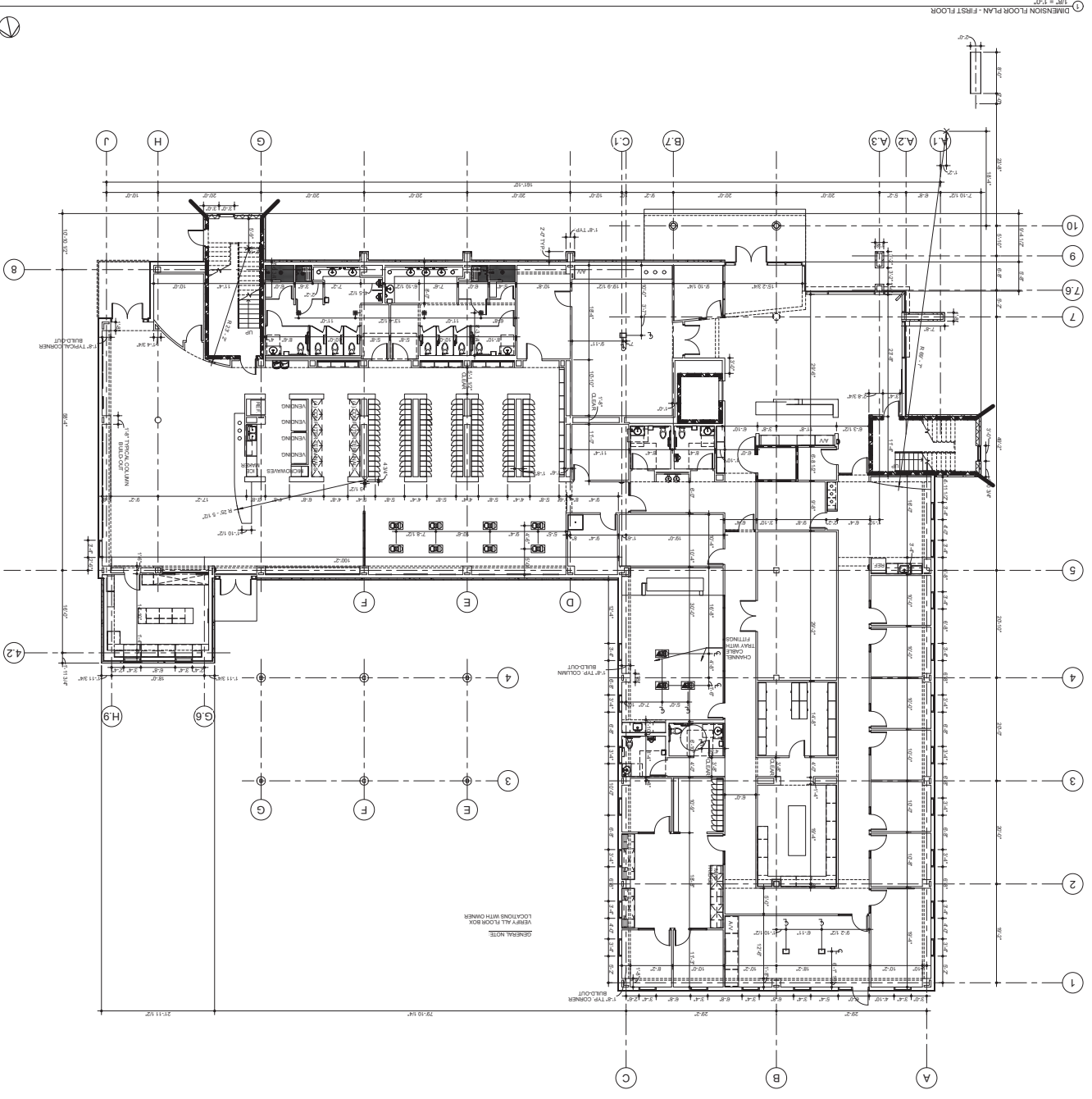
CONFORMED DOCUMENTS
 RECORD DRAWING:
 THE CONTRACTOR SHALL BE RESPONSIBLE FOR VERIFYING THE ACCURACY OF THIS DRAWING. THE ARCHITECT ASSUMES NO LIABILITY FOR ERRORS OR OMISSIONS. THE CONTRACTOR SHALL BE RESPONSIBLE FOR OBTAINING ALL NECESSARY PERMITS AND APPROVALS FROM THE LOCAL AUTHORITIES. THE CONTRACTOR SHALL BE RESPONSIBLE FOR OBTAINING ALL NECESSARY PERMITS AND APPROVALS FROM THE LOCAL AUTHORITIES.

ARCHITECTS
 JAY GOODMAN
 2500 NW 20th Avenue
 Gainesville, Florida 32609
 PHONE: (352) 333-1381
 FAX: (352) 333-1378

FOR
 City of Gainesville
 Florida
 Gainesville, Florida
 FACILITY
 & OPERATIONS
 MAINTENANCE
 FLEET
 RTS BUS

5A1.30

5A1.41



1/8" = 1'-0"
 DIMENSION FLOOR PLAN - FIRST FLOOR

REVISION DATA:

| NO. | DESCRIPTION | DATE |
|-----|-------------|------|
| | | |
| | | |
| | | |

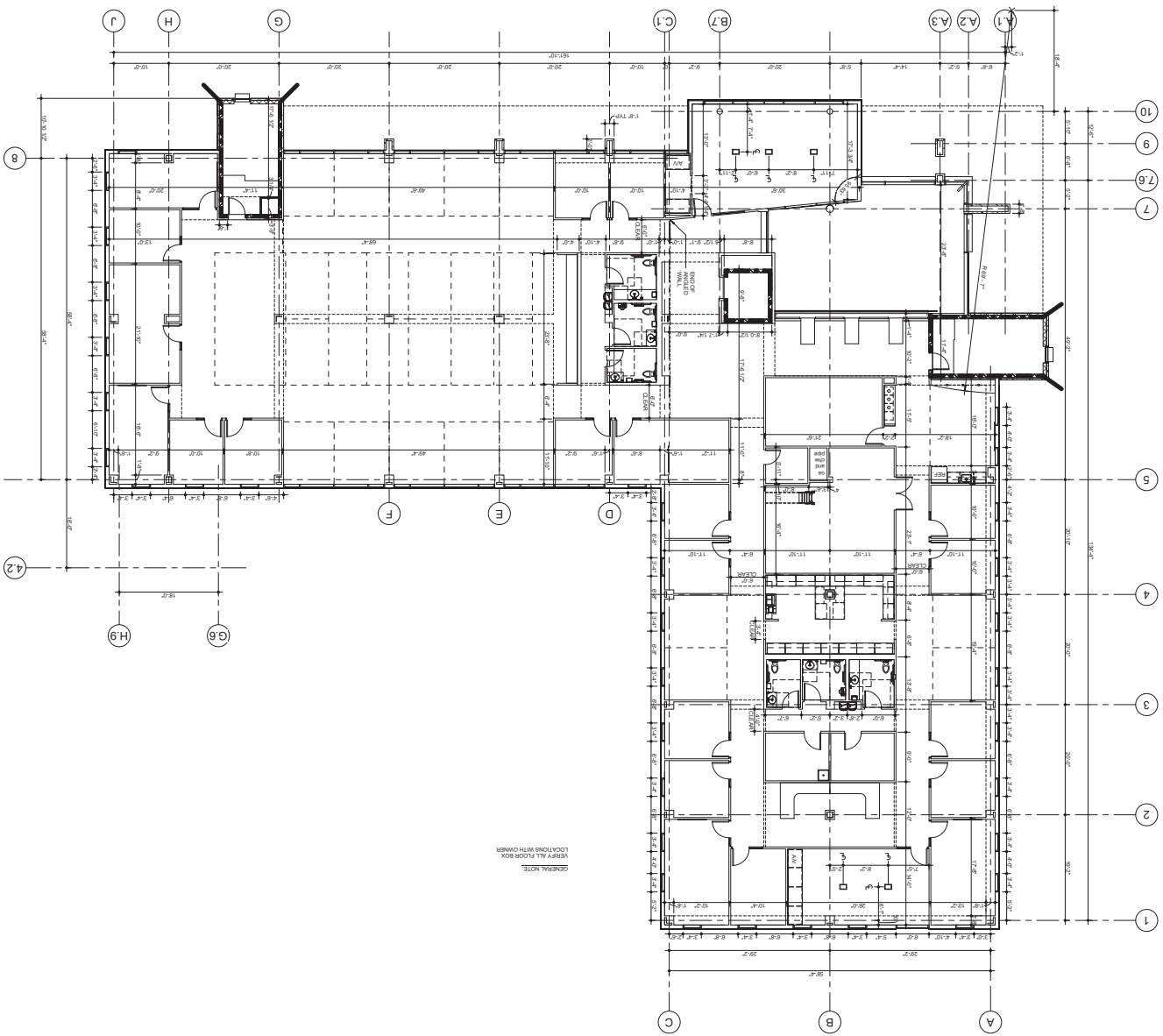
DATE: 23 MAR 2013
 ARCHITECTS PROJECT NO.: 11086
 DRAWN BY: APT/W
 CHECKED BY: APT/W
 CONFIRMED DOCUMENTS

RECORD DRAWING:
 THIS DRAWING IS THE PROPERTY OF POKINVAR ASSOCIATES, INC. AND IS TO BE USED ONLY FOR THE PROJECT AND SITE SPECIFICALLY IDENTIFIED HEREIN. ANY REUSE OR REPRODUCTION OF THIS DRAWING WITHOUT THE WRITTEN CONSENT OF POKINVAR ASSOCIATES, INC. IS PROHIBITED.

ARCHITECTS
 750 SW 2ND AVENUE
 GAINESVILLE, FLORIDA 32601
 PHONE: (352) 339-1338
 FAX: (352) 339-1338

for
 City of
 Gainesville
 Florida
 Gainesville,
 MAINTENANCE
 & OPERATIONS
 FACILITY
 FLEET
 RTS BUS





GENERAL NOTE
VERIFY ALL FLOOR BOX
LOCATIONS WITH OWNER

5A1.42

| NO. | Dimension | Date |
|-----|-----------|------|
| | | |
| | | |

REVISION DATES
DATE: 29 March 2013
DRAWN BY: [Signature]
CHECKED BY: [Signature]
PROJECT NO.: 11088
DATE CHECKED: [Signature]

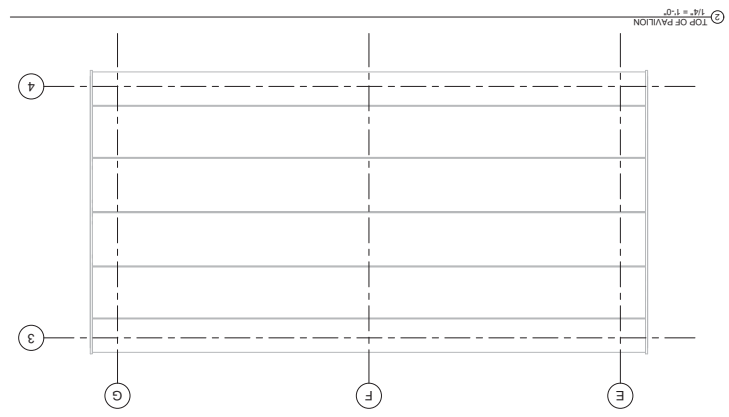
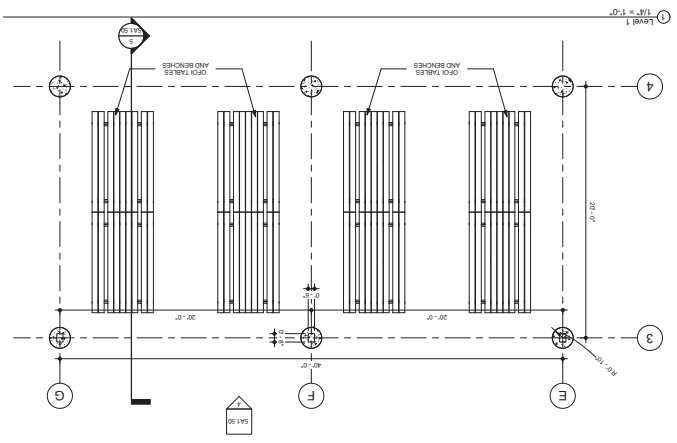
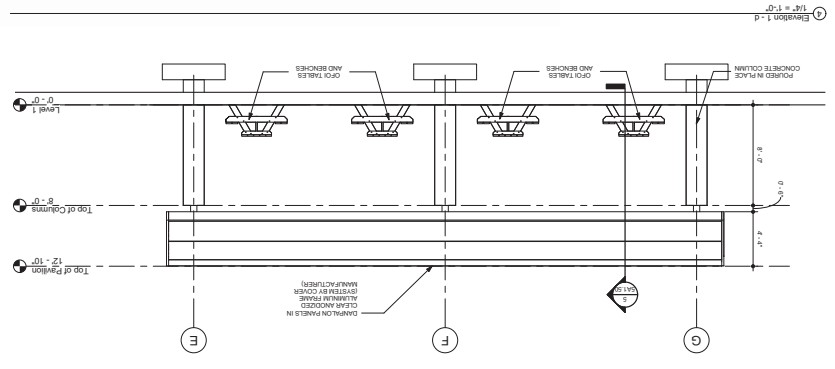
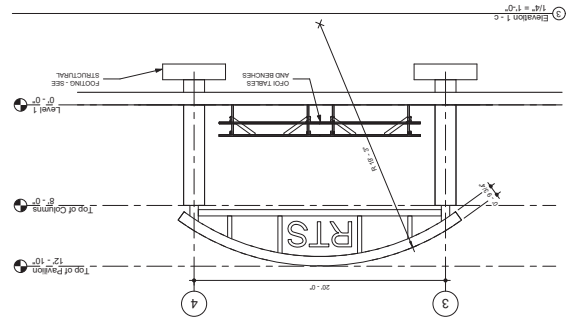
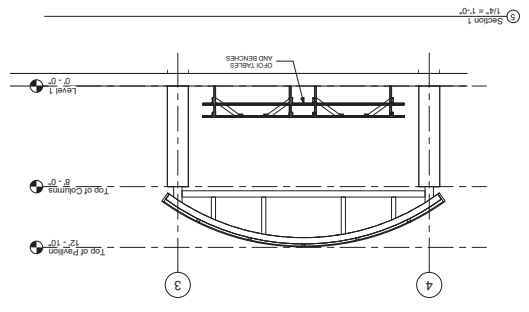
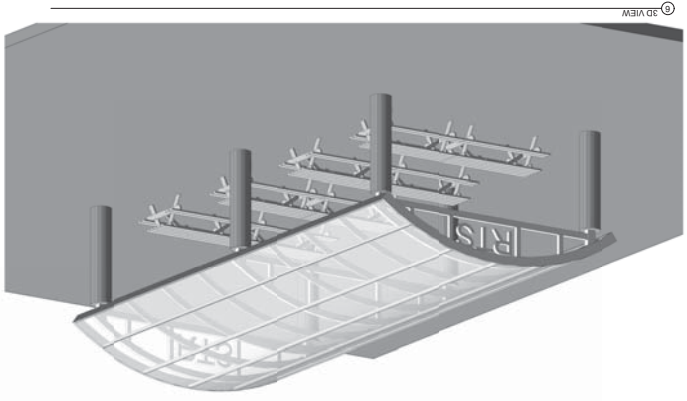
APPROVALS
APPROVED: [Signature]
DATE: [Signature]
CONFORMED DOCUMENTS

RECORD DRAWING:
THIS DRAWING IS THE PROPERTY OF POKIYAR ASSOCIATES, INC. AND IS TO BE USED ONLY FOR THE PROJECT AND SITE SPECIFICALLY IDENTIFIED HEREIN. ANY REUSE OR MODIFICATION OF THIS DRAWING WITHOUT THE WRITTEN CONSENT OF POKIYAR ASSOCIATES, INC. IS PROHIBITED.

ARCHITECTS
AA 002288
250 NW 2ND AVENUE
SUITE 505
GAINESVILLE, FLORIDA 32601
PHONE: (352) 333-1331
FAX: (352) 333-1331

for
City of
Gainesville
Florida
Gainesville,
MAINTENANCE
& OPERATIONS
FACILITY
FLEET
RTS BUS

5A1.50



REVISION DATES

| DATE | BY | DESCRIPTION |
|---------------|----|-------------|
| 23 March 2013 | | |

DESIGNED BY: []
 ARCHITECTS PROJECT NO.: 1048
 DRAWN BY: []
 APPROVED BY: []

CONFORMED DOCUMENTS

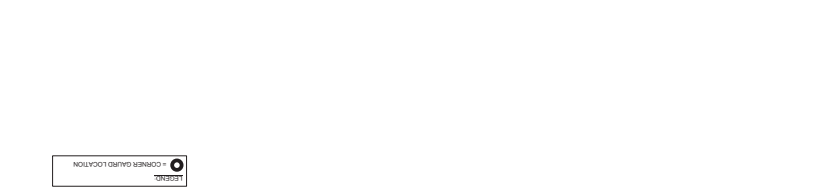
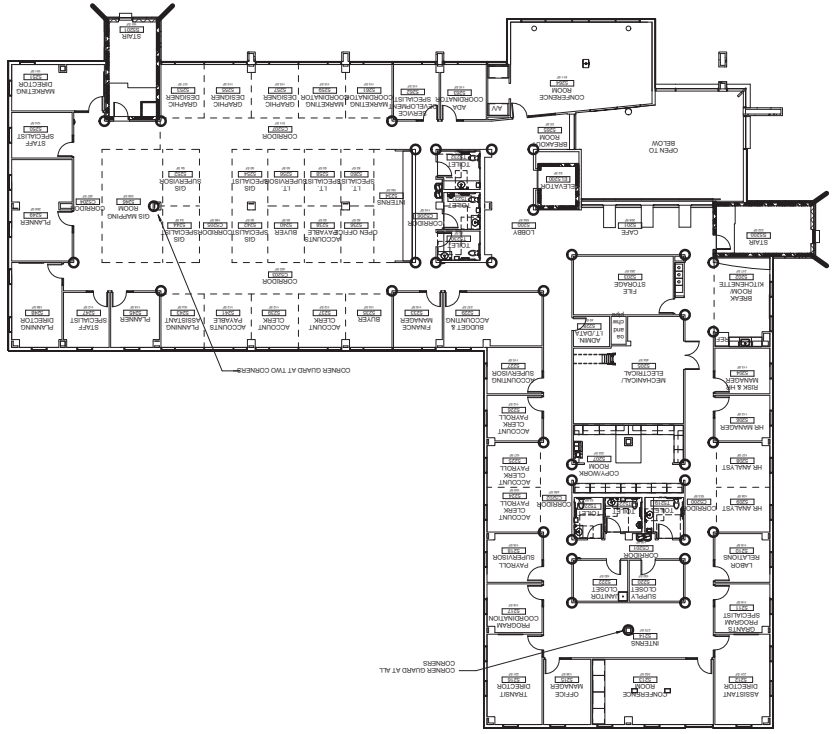
RECORD DRAWING:
 THIS DRAWING IS THE PROPERTY OF THE ARCHITECT AND IS TO BE USED ONLY FOR THE PROJECT AND SITE SPECIFICALLY IDENTIFIED HEREIN. NO PART OF THIS DRAWING IS TO BE REPRODUCED OR TRANSMITTED IN ANY FORM OR BY ANY MEANS, ELECTRONIC OR MECHANICAL, INCLUDING PHOTOCOPYING, RECORDING, OR BY ANY INFORMATION STORAGE AND RETRIEVAL SYSTEM, WITHOUT THE WRITTEN PERMISSION OF THE ARCHITECT.

ARCHITECTS
 PAA 002088
 505 BAY AVENUE
 GAINESVILLE FLORIDA 32601
 PHONE (352) 333-1311
 FAX (352) 333-1311

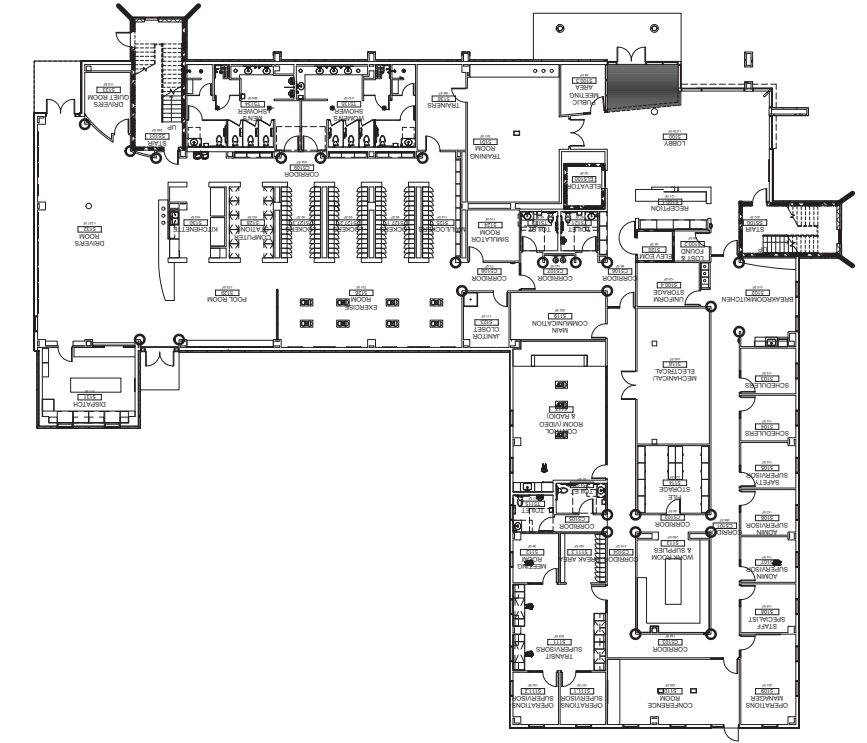
RTS BUS FLEET MAINTENANCE & OPERATIONS FACILITY
 Gainesville, Florida
 for City of Gainesville



② CORNER GUARD PLAN - SECOND FLOOR
 SIZE = 1/8" = 1'-0"



① CORNER GUARD PLAN - FIRST FLOOR
 SIZE = 1/8" = 1'-0"



REVISIONS

| NO. | DESCRIPTION | DATE |
|-----|-------------|------|
| | | |
| | | |
| | | |

DATE: 29 MAR 2013

ARCHITECTS' PROJECT NO.: 11068

DRAWN BY: JMD

APPROVED BY: JMD

CONFORMED DOCUMENTS

RECORD DRAWING: []

THIS DRAWING IS THE PROPERTY OF POKINVAR ASSOCIATES, INC. IT IS TO BE USED ONLY FOR THE PROJECT AND SITE SPECIFICALLY IDENTIFIED HEREIN. ANY REUSE OR MODIFICATION OF THIS DRAWING WITHOUT THE WRITTEN CONSENT OF POKINVAR ASSOCIATES, INC. IS PROHIBITED.

ARCHITECTS

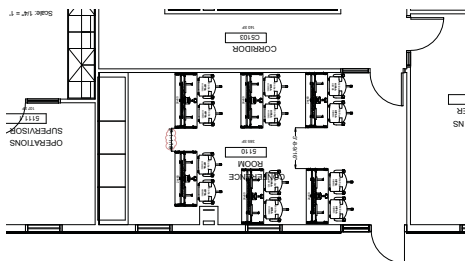
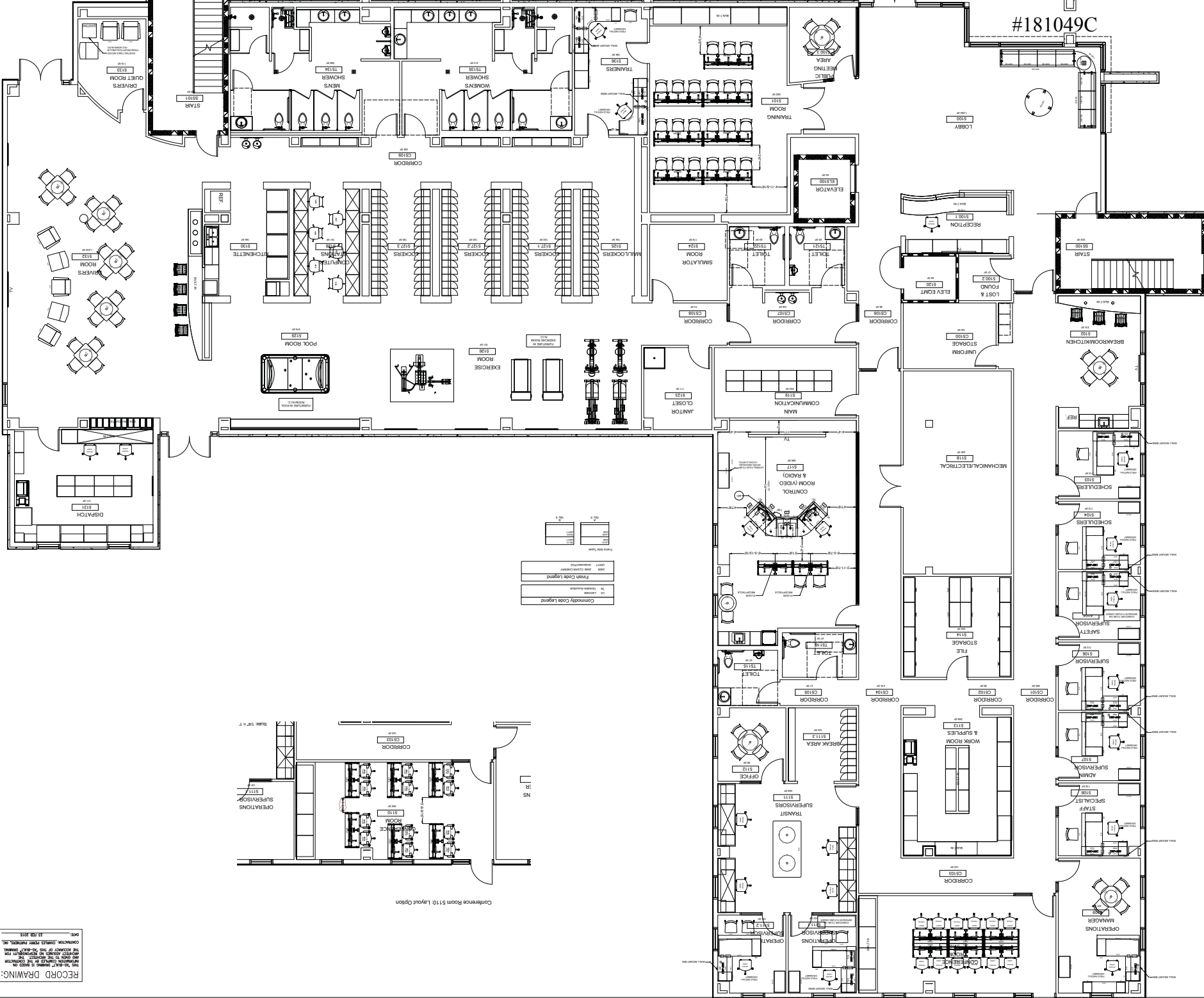
POKINVAR ASSOCIATES

729 SW 2ND AVENUE
 GAINESVILLE, FL 32601

PHONE: (352) 379-1378
 FAX: (352) 379-1381

AA 002088

for
 City of
 Gainesville
 Florida
 MAINTENANCE
 & OPERATIONS
 FACILITY
 FLEET
 RTS BUS

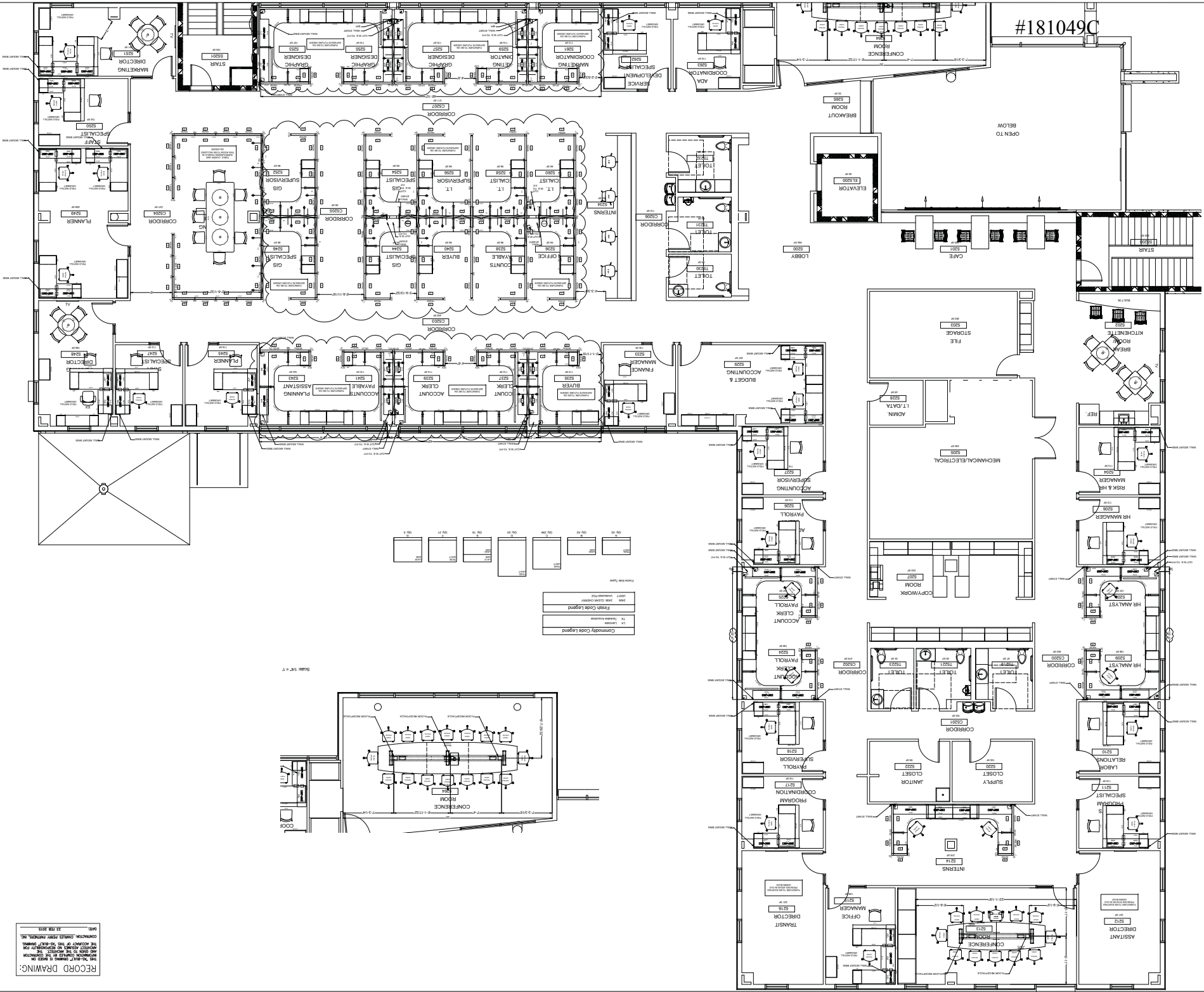


RECORD DRAWING:
 DATE: 03.08.2018
 DRAWN BY: JAMES J. PETERSON, INC.
 CHECKED BY: JAMES J. PETERSON, INC.
 PROJECT: 181049C - 1ST FLOOR, NEW ADMIN BLDG

OEC Business Interiors
 The Professional Transformation
 1401 N.W. 80TH BLVD., Gainesville, FL 32606
 P: 352.262.1192 F: 352.233.0002 WWW.OECFL.COM

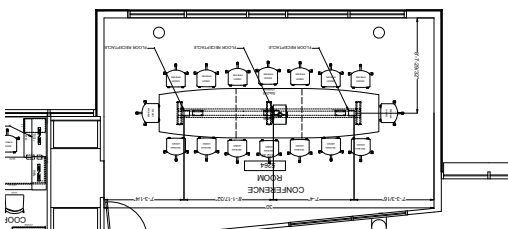
| | | | |
|-------------|---------------------|-------------|---------------------------|
| CODE | 181049C | DATE | 03.08.18 |
| PROJECT | 181049C | DESCRIPTION | 1ST FLOOR, NEW ADMIN BLDG |
| OWNER | CITY OF GAINESVILLE | DESIGNER | JAMES J. PETERSON, INC. |
| DATE | 03.08.18 | SCALE | AS SHOWN |
| PROJECT NO. | 181049C | DATE | 03.08.18 |

#181049C



Commonly Used Legend

| | |
|---|---------------------------|
| □ | TOILET |
| □ | STAIR |
| □ | ELEVATOR |
| □ | CONFERENCE ROOM |
| □ | MEETING ROOM |
| □ | OFFICE |
| □ | RECEPTION |
| □ | STORAGE |
| □ | RESTROOM |
| □ | LOCKER |
| □ | FILE |
| □ | STORAGE |
| □ | MECHANICAL/ELECTRICAL |
| □ | IT |
| □ | ACCOUNTING |
| □ | BUDGET & ACCOUNTING |
| □ | FINANCE MANAGER |
| □ | BUYER |
| □ | ACCOUNT CLERK |
| □ | ACCOUNT PAYABLE ASSISTANT |
| □ | PLANNER |
| □ | GIS SPECIALIST |
| □ | DESIGNER |
| □ | MARKETING DIRECTOR |



RECORD DRAWING:
 20 FEB 2015
 2015 FEB 2015
 CONSULTING ENGINEERS, INC.
 1401 NW 80TH BLVD, GAINESVILLE, FL 32609
 P: 352.332.1192 F: 352.333.0002 WWW.OEC-FL.COM

OEC Business Interiors
 The Commercial Transformation

1401 NW 80TH BLVD, GAINESVILLE, FL 32609
 P: 352.332.1192 F: 352.333.0002 WWW.OEC-FL.COM

2nd Floor, New Admin Bldg
 City of Gainesville

Scale: 1/4" = 1'-0"

DATE: 02/02/15
 DRAWN BY: AJL
 CHECKED BY: BJD
 PROJECT: 111

Review the drawing to identify changes, revisions and omissions after your inspection. This drawing is intended for use as a guide only. It is not intended to be a contract document. The responsibility of the user of this drawing is to verify the accuracy and completeness of the information provided. OEC Business Interiors, Inc. and its affiliates shall not be held responsible for any errors or omissions on this drawing or any other drawings or documents prepared by OEC Business Interiors, Inc. or its affiliates.

Signature: _____