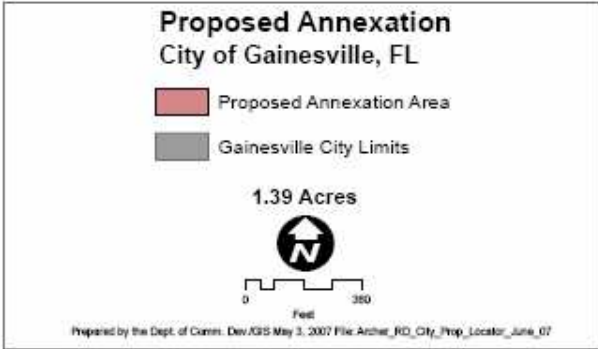
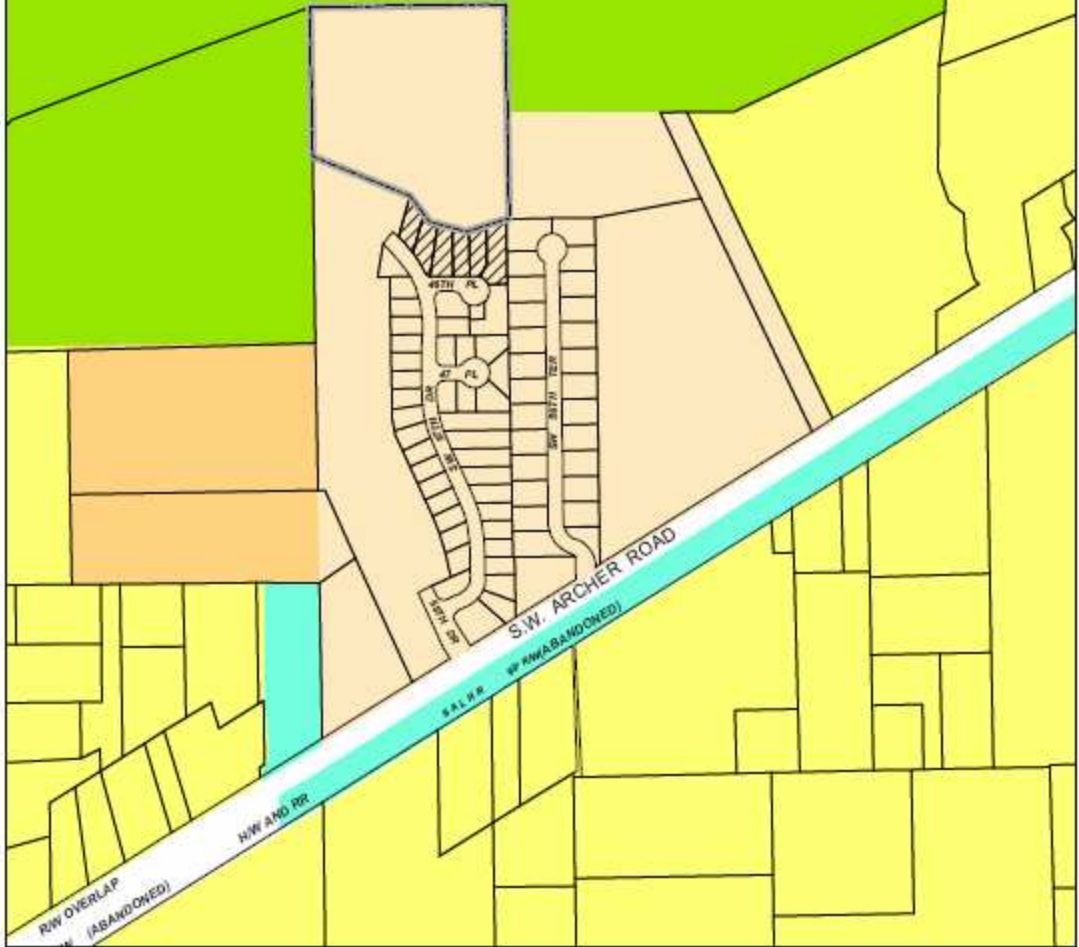


# City-Owned Parcels South of Lake Kanapaha

Approximately 1.4 Acres



# City-Owned Parcels South of Lake Kanapaha



**Proposed Annexation  
Gainesville, Florida**

▨ Proposed Annexation Area  
— Gainesville City Limits

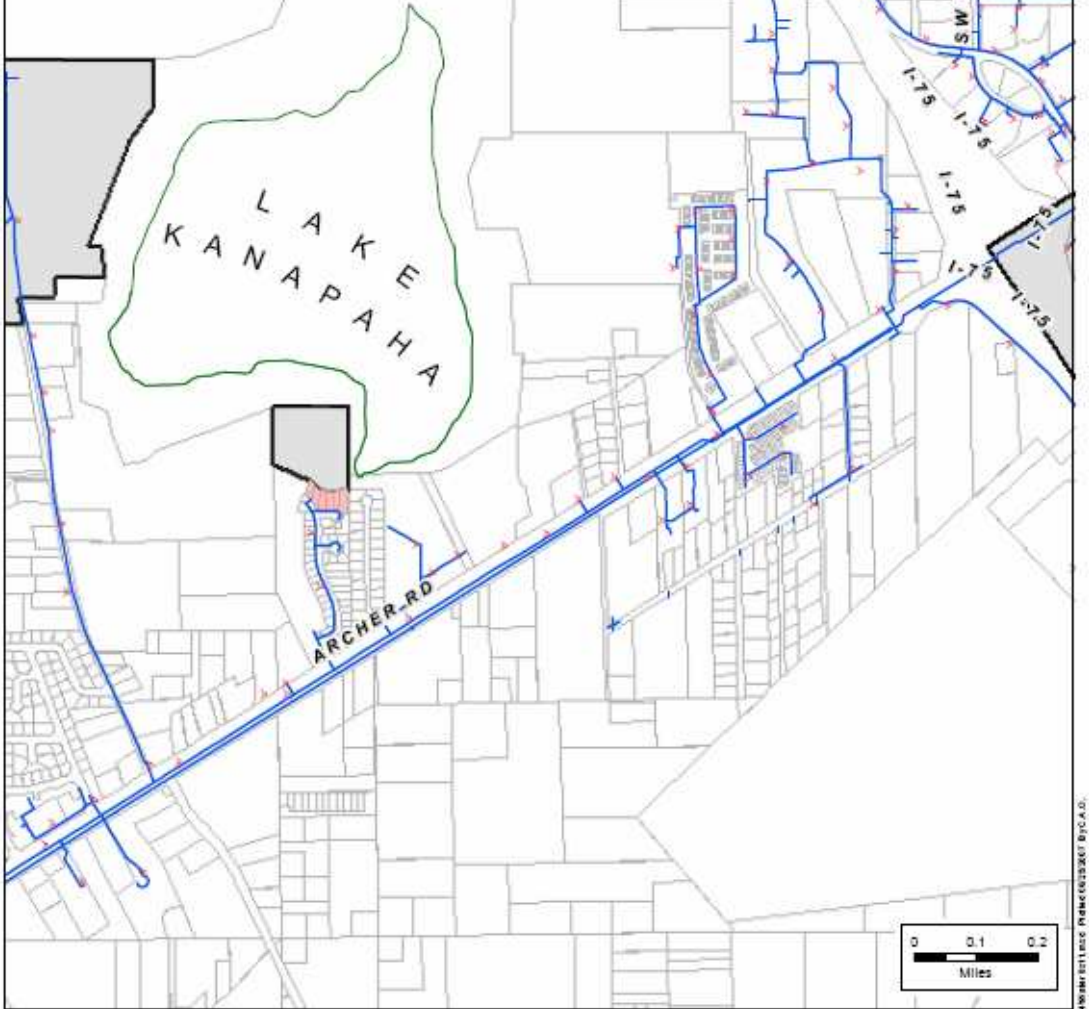
**Alachua County Land Use Categories**

- Institutional
- Low Density Residential
- Medium Density Residential
- Medium High Density Residential
- Recreation

0 440 Feet

This map is intended to indicate the zoning/land use on the properties as shown. Do not rely on this map for accuracy of dimensions. For specific information, contact the City of Gainesville, Florida. Prepared by the Dept. of Comm. Dev./GIS May 3, 2007 File: Archer\_RD\_City\_Prop\_LUP\_June\_07.mxd

# City-Owned Parcels South of Lake Kanapaha



**Water Utility Facilities Near Proposed Annexation Area**

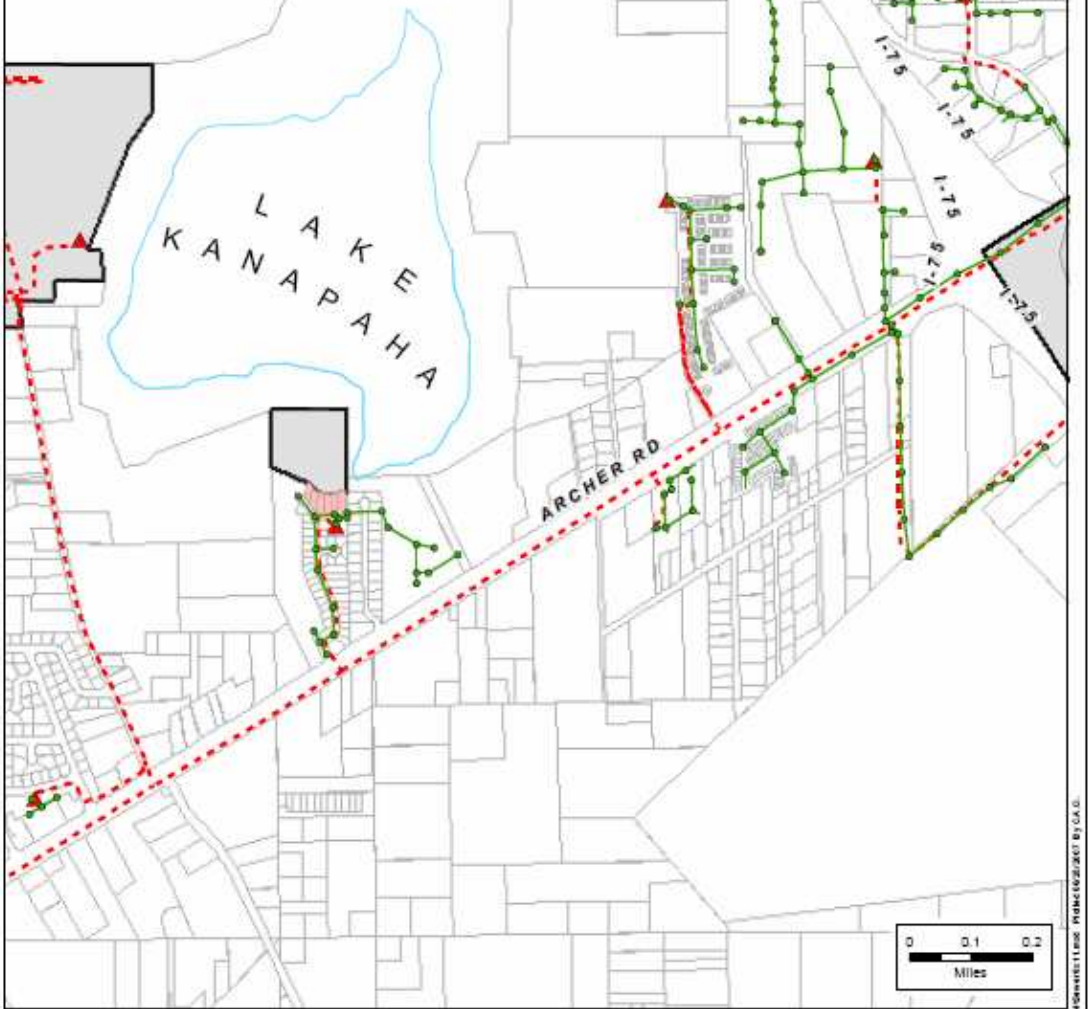
Parcel Numbers 06909-001-001, 06909-001-002, 06909-001-003, 06909-001-004, 06909-001-005 and 06909-001-006

- Legend**
- Gainesville City Limits
  - Proposed Annexation Area
  - Water Main
  - Hydrant



Copyright © 2014 by Gainesville Regional Utility. All rights reserved. Prepared by B+C.A.O.

# City-Owned Parcels South of Lake Kanapaha



**Sewer Utility Facilities Near Proposed Annexation Area**

Parcel Numbers 06909-001-001, 06909-001-002, 06909-001-003, 06909-001-004, 06909-001-005 and 06909-001-006

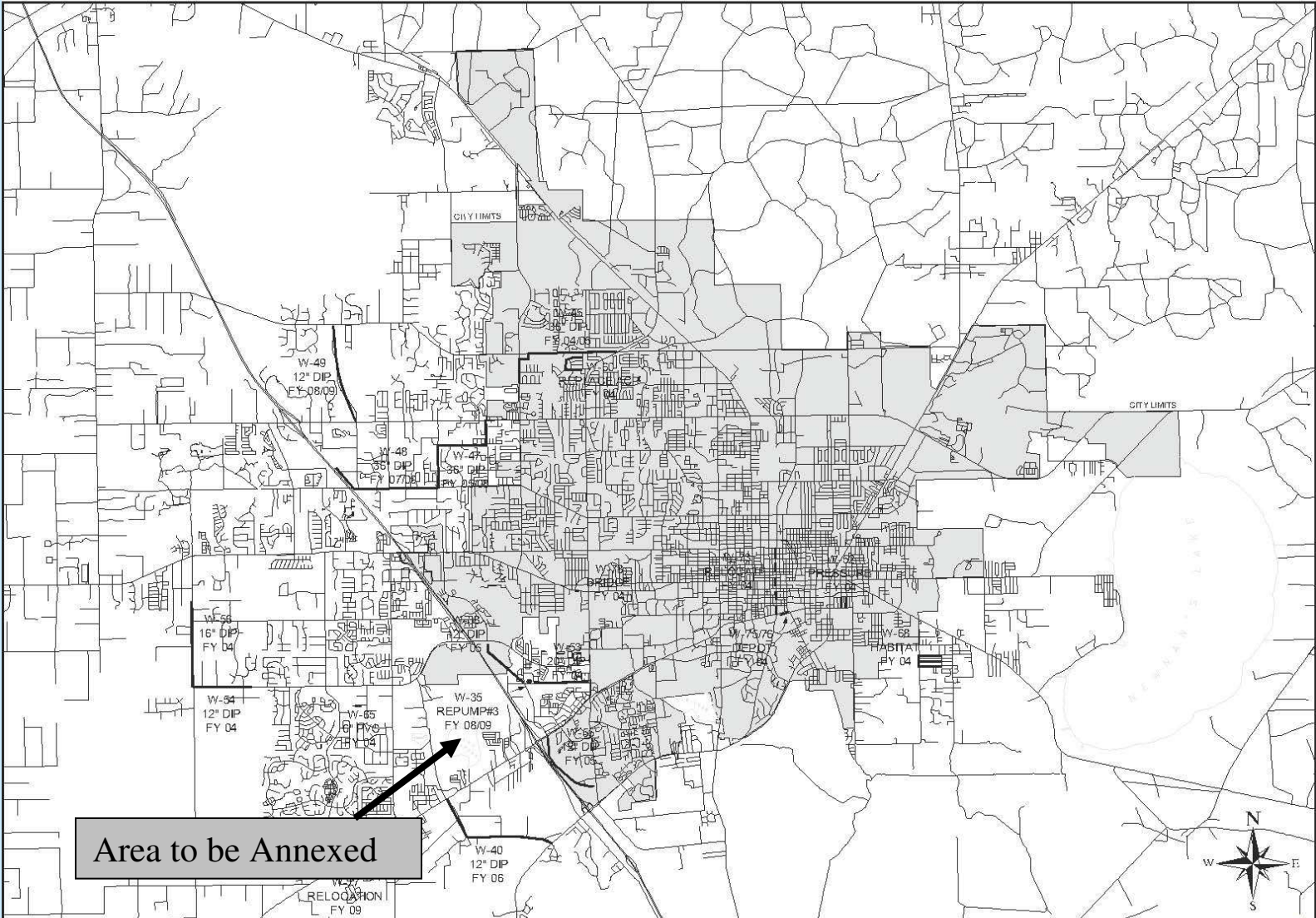
**Legend**

- Gainesville City Limits
- Force Main
- Lift Station
- Proposed Annexation Area
- Gravity Main
- Manhole



© 2016 GRU. All Rights Reserved. Project: Sewer Utility Facilities Near Proposed Annexation Area. Project No: 16-001. Date: 10/20/2016. By: G.A.G.

# City-Owned Parcels South of Lake Kanapaha



FILE: D:\LANNON\SOS 2003\WATER\_BUDGET.DWG  
PLOTTED: 08\07\06 10:14am by C.A.O.

**WATER SYSTEM CAPITAL BUDGET PROJECTS**  
**NOVEMBER, 2003**

STRATEGIC PLANNING DEPARTMENT  
GAINESVILLE REGIONAL UTILITIES  
PO BOX 147117  
GAINESVILLE, FL 32614-7117



# City-Owned Parcels South of Lake Kanapaha

