



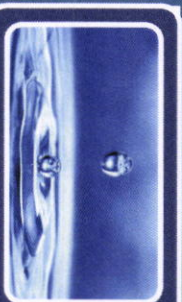
ConnectFree Program History

- 2003 - Original ConnectFree Resolution
 - Extend water, wastewater & reclaimed water to residences inside City
 - Funded via ½ of proceeds from 25% surcharge on water and wastewater connection charges outside City
- July 2014 – City Commission decision
 - Suspend program for 1 year
 - Disperse remaining unencumbered funds
 - Refer to Base Rates Fuel Adjustment Committee (BRFA)



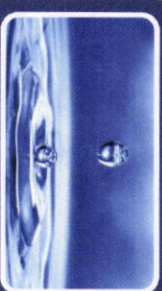
BRFA Committee

- **Base Rate & Fuel Adjustment Committee Report (March 5, 2015) recommendations:**
 - Create dedicated funding source
 - Put program under general government control
 - Focus on low income residents, feasible locations, dense population & possibly non-profits that offer significant public benefit
 - Develop criteria for non-profits
 - Discuss per customer cap & annual evaluation of cap



City Commission

- **May 7, 2015 City Commission Meeting**
(Legislative Item #140680)
- **Develop a General Government managed water/wastewater connection program**
- **Re-establish funding by re-instituting 25% surcharge on new water and wastewater connections in unincorporated area**
 - Entire surcharge revenue to go to ConnectFree
 - Twice the historical level (previously 1/2 of surcharge revenue)
- **Estimated revenue \$250,000/year**



City Commission

- Open up eligibility to GRU service territory
- Refer issue to Community Development Committee (CDC) for further discussion & recommendations



Community Development Committee

- December 2, 2015 - CDC recommendation:
 - Available throughout GRU service area;
 - Funding as grant, no payback;
 - Funding priority given to public, health and safety; low income households; and low income areas;
 - On-site plumbing modifications for low income households at or below the 80% median income level for Gainesville, with staff given the flexibility to make decisions regarding income-level eligibility;



Community Development Committee

- Maximum funding cap per customer, evaluated annually;
- Notify City Commission of projects \$50K or more;
- Assistance to non-profits and government entities serving special needs populations;
- Minimum 60% participation for neighborhood extensions;
- Staff reporting back in eighteen (18) months with program results.