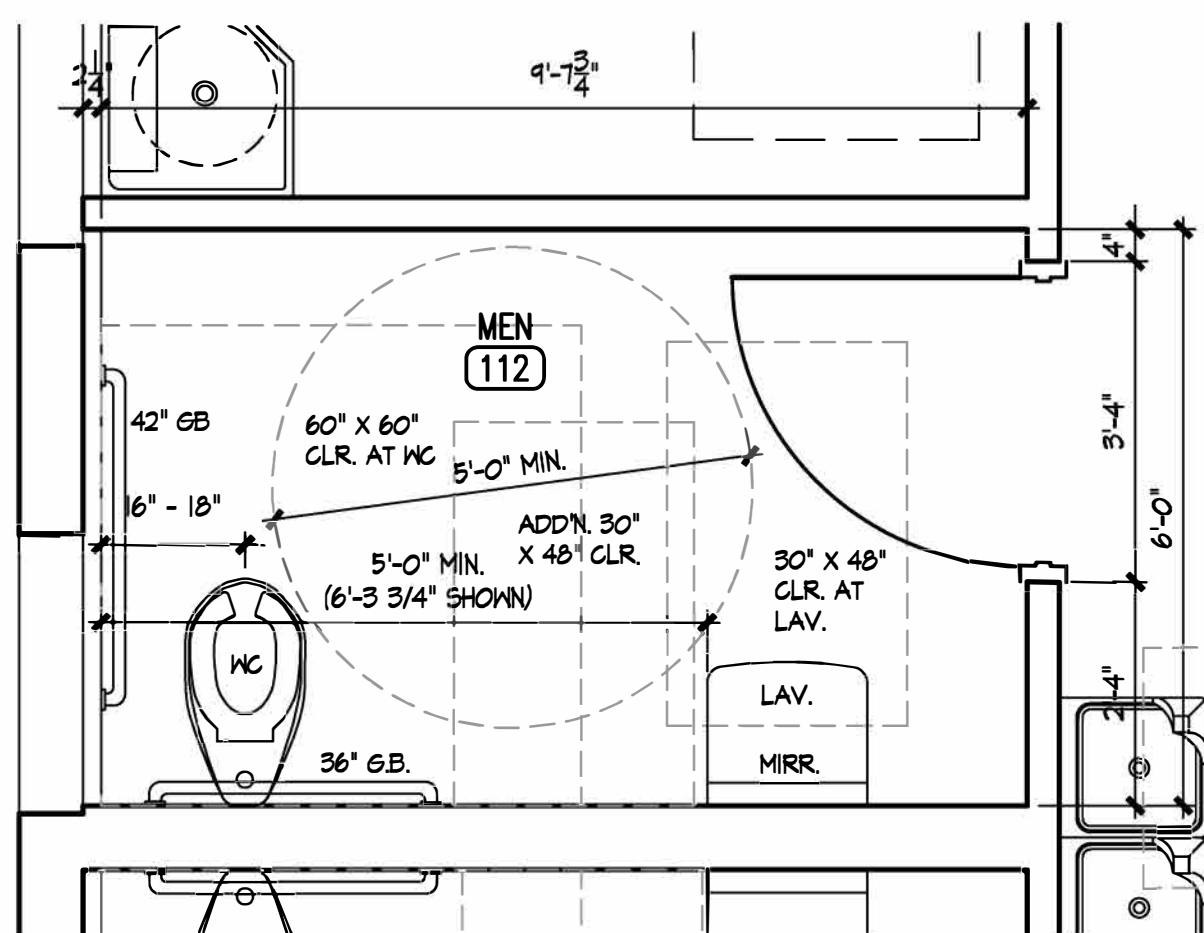


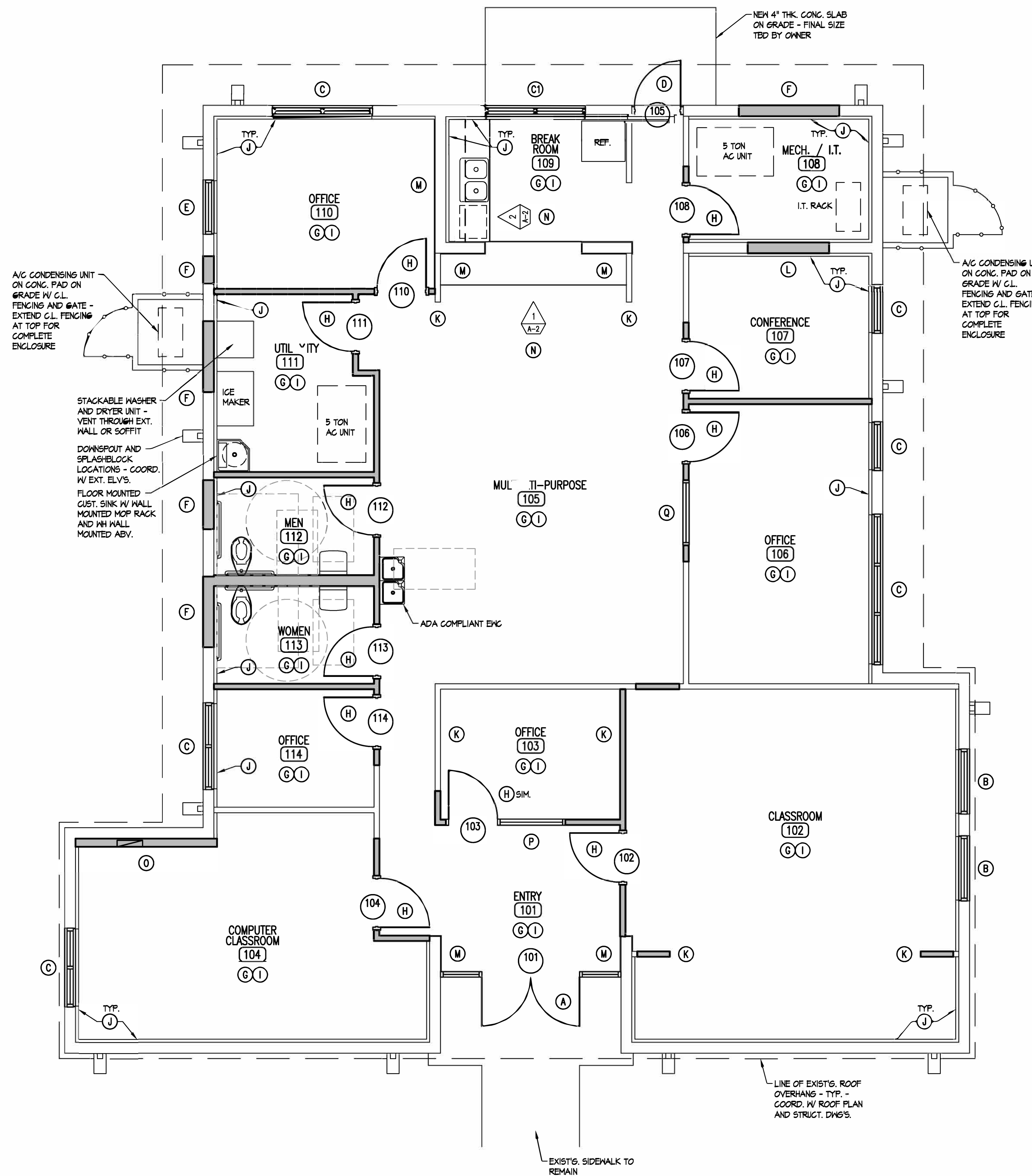
**WALL LEGEND**

- EXISTING WALL TO REMAIN - NEW 5/8" PAINTED GYP. BD. FINISH
- NEW P.T. 2X4 WOOD STUD FRAMING AT 16" O.C. W/ 5/8" PAINTED GYP. BD. FINISH AND FULL BATT INSUL. - USE MOISTURE RESISTANT GYP. BD. AT UTILITY ROOM AND RESTROOMS - EXISTING WALLS THAT ARE NOT DAMAGED AND ARE STRUCTURALLY SOUND MAY REMAIN IN COORDINATION WITH THE NEW RENOVATION PLAN AND THE STRUCTURAL DRAWINGS



**TYP. RESTROOM PLAN**  
1/2" = 1'-0"

RESTROOM ACCESSORIES NOTE:  
TOILET PAPER DISPENSER, SOAP  
DISPENSER, PAPER TOWEL  
DISPENSER AND WASTE  
RECEPTACLE AS SELECTED BY  
OWNER AND INSTALLED AT ADA  
COMPLIANT DIMENSIONS PER  
SHEET G-1



**RENOVATION PLAN**  
1/4" = 1'-0"

**RENOVATION NOTES**

- (A) ALUMINUM-FRAMED STOREFRONT ENTRANCE AND GLAZING SYSTEM W/ 1/4" TEMPERED AND TINTED GLASS
- (B) ALUMINUM-FRAMED STOREFRONT WINDOWS AND GLAZING SYSTEM W/ 1/4" TEMPERED AND TINTED GLASS IN NEW OPNG.
- (C) ALUMINUM-FRAMED STOREFRONT WINDOW AND GLAZING SYSTEM W/ 1/4" TEMPERED AND TINTED GLASS IN EXIST'G. OPNG. - EXIST'G. MAS. SILL TO REMAIN
- (D) ALUMINUM-FRAMED STOREFRONT WINDOW AND GLAZING SYSTEM W/ 1/4" TEMPERED AND TINTED GLASS IN EXIST'G. OPNG. - EXIST'G. MAS. SILL TO REMAIN - PROVIDE SLIDING LOWER WINDOW PER THE EXTERIOR ELEVATIONS
- (E) HOLLOW METAL DOOR, FRAME AND DOOR HARDWARE - COORD. W/ DOOR SCHEDULE - FIELD VERIFY DIMENSIONS AS FRAME TO BE INSTALLED IN EXIST'G. MAS. OPNG.
- (F) ALUMINUM-FRAMED STOREFRONT WINDOW AND GLAZING SYSTEM W/ 1/4" TEMPERED AND TINTED GLASS IN EXIST'G. OPNG. - INFILL LOWER PORTION OF OPNG. W/ P.T. 2 X 4 WOOD STUD FRAMG. AT 16" O.C. MAX. - COORD. W/ EXTERIOR ELEVATIONS - SET FRAMG. SO THAT INT. GYP. BD. FIN. ALIGNS WITH OTHER INT. GYP. BD. FIN. - FILL FRAMG. W/ BATT INSUL. AND EXT. FIN. OF 5/8" EXT. GR. GYP. BD., WEATHER BARRIER AND PAINTED STUCCO FIN. - INSET FRAMG. SO THAT STUCCO IS 1/2" BACK FROM OUTSIDE FACE OF EXIST'G. MAS. WALL
- (G) INFILL EXIST'G. MAS. OPNG. W/ P.T. 2 X 4 WOOD STUD FRAMG. AT 16" O.C. MAX. - COORD. W/ EXTERIOR ELEVATIONS - SET FRAMG. SO THAT INT. GYP. BD. FIN. ALIGNS WITH OTHER INT. GYP. BD. FIN. - FILL FRAMG. W/ BATT INSUL. AND EXT. FIN. OF 5/8" EXT. GR. GYP. BD., WEATHER BARRIER AND PAINTED STUCCO FIN. - INSET FRAMG. SO THAT STUCCO IS 1/2" BACK FROM OUTSIDE FACE OF EXIST'G. MAS. WALL
- (H) INT. WALLS PER WALL LEGEND - EXTEND WALLS AND FIN. TO ROOF DECK ABOVE - APPROX. 10'-0" FIELD VERIFY - TYPICAL NOTE THROUGHOUT
- (I) 3'-0" W. X 1'-0" H. SCHD. IN. IN PAINTED WOOD FRAME W/ DOOR HARDWARE - COORD. W/ DOOR SCHEDULE
- (J) FLOOR FINISH AND WALL BASE AS SELECTED BY THE OWNER - TYPICAL NOTE THROUGHOUT
- (K) P.T. 2 X 4 WOOD STUD FURRING (LONG DIMENSION OF STUD FLAT AGAINST WALL) AT 16" O.C. W/ 1-1/2" RIGID INSUL. BD. BETWEEN STUDS AND PAINTED 5/8" GYP. BD. FIN.
- (L) COORD. W/ STRUCT. DWGS. FOR NEW BEARING FRAMG. IN THESE AREAS
- (M) INFILL EXIST'G. MAS. OPNG. W/ P.T. 2 X 4 WOOD STUD FRAMG. AT 16" O.C. MAX. - SET FRAMG. SO THAT GYP. BD. FIN. ALIGNS W/ OTHER INT. GYP. BD. FIN. - FILL FRAMG. W/ FULL BATT INSUL.
- (N) 5/8" GYP. BD. DIRECT APPLIED TO EXIST'G. MAS. WALL
- (O) FLAG. LAM. CASEWORK - COORD. W/ INTERIOR ELEVATIONS
- (P) P.T. 2 X 6 WOOD STUD FRAMG. AT 16" O.C. FOR NEW ELEC. PANEL CHASE WALL - FILL FRAMG. W/ BATT INSUL. - PAINTED 5/8" GYP. BD. ON INT. SIDE
- (Q) ALUMINUM-FRAMED DOOR AND GLAZING SYSTEM W/ 1/4" CLEAR TEMPERED GLASS - REFER TO DOOR SCHEDULE INFO. ON SHEET G-1
- (R) PAINTED HOLLOW METAL FRAME VIEW WINDOW W/ 1/4" TEMPERED GLASS W/ HEAD AT 1'-2" AFF AND SILL AT 3'-0" AFF - FRAME 2" AT HEAD, JAMB AND SILL
- (S) WHERE CONC. SLAB IS TRENCHED FOR NEW UG UTILITIES, COMPACT GRADE, TREAT, INSTALL VAPOR BARRIER AND POUR BACK LEVEL TO EXIST'G. SLAB - TYPICAL NOTE THROUGHOUT
- (T) PATCH AND PREP. EXIST'G. SURFACES AS REQ'D. FOR NEW CONSTRUCTION AND FINISHES - TYPICAL NOTE THROUGHOUT

**CITY OF GAINESVILLE**  
**INSTITUTE FOR WORKFORCE INNOVATION**  
**BUILDING RENOVATIONS**  
**GAINESVILLE, FLORIDA**

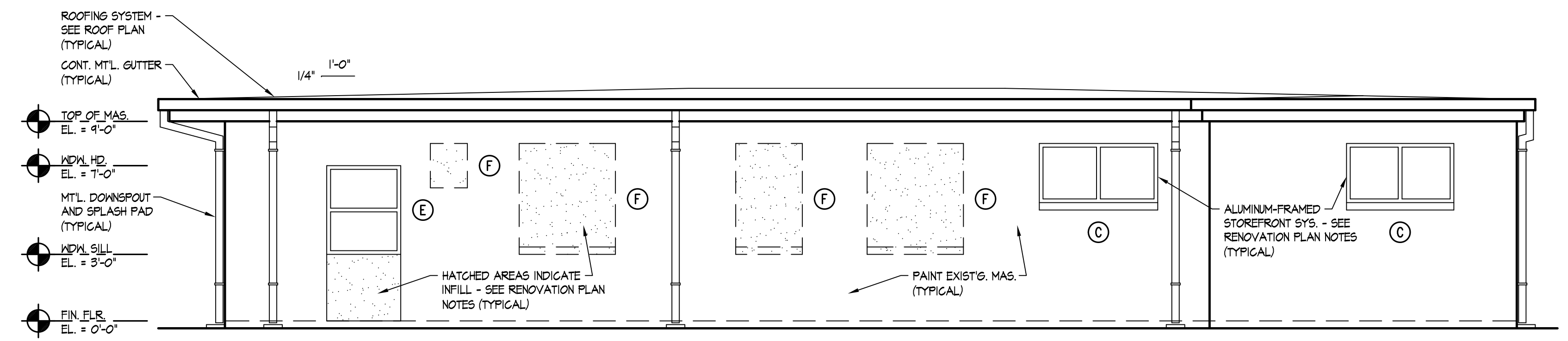


ROY DANIEL KAIL, JR.  
ARCHITECT  
KAIL PARTNERS  
AA36002808

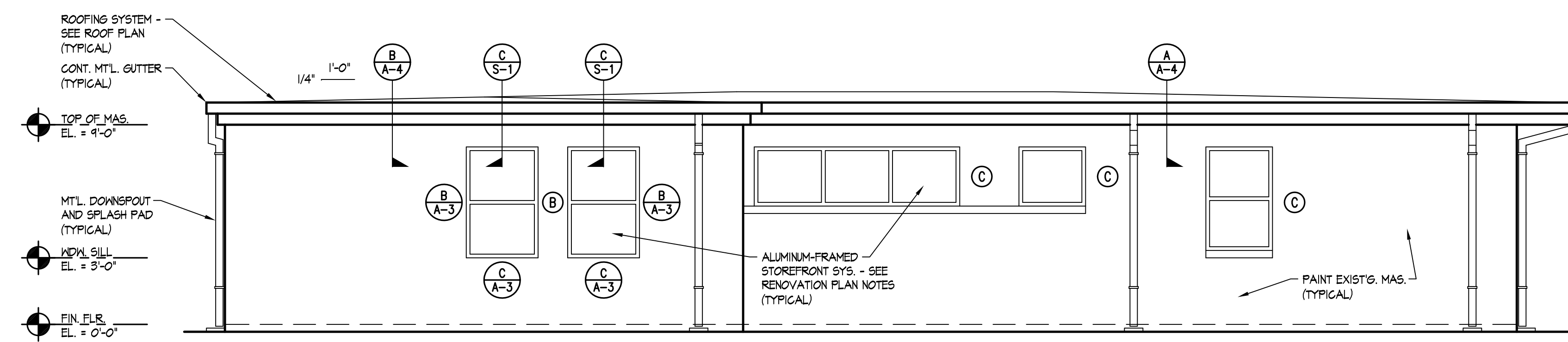
DATE  
1/10/17

**1638**

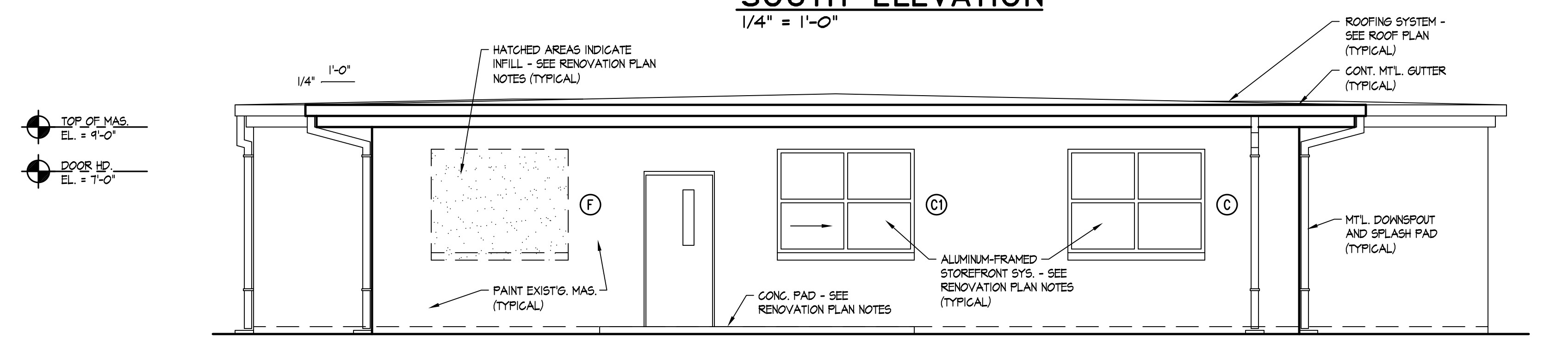
**A-1**



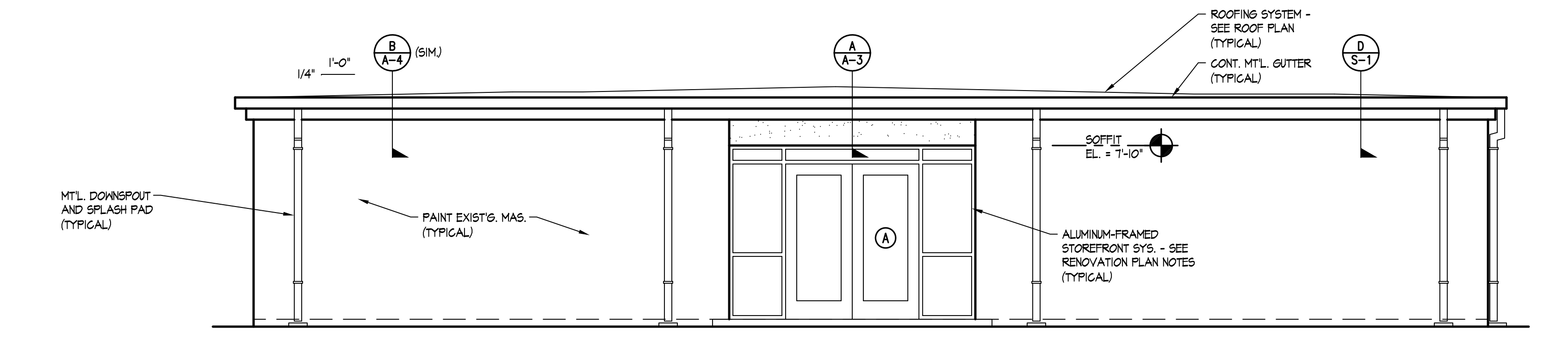
**NORTH ELEVATION**  
 1/4" = 1'-0"



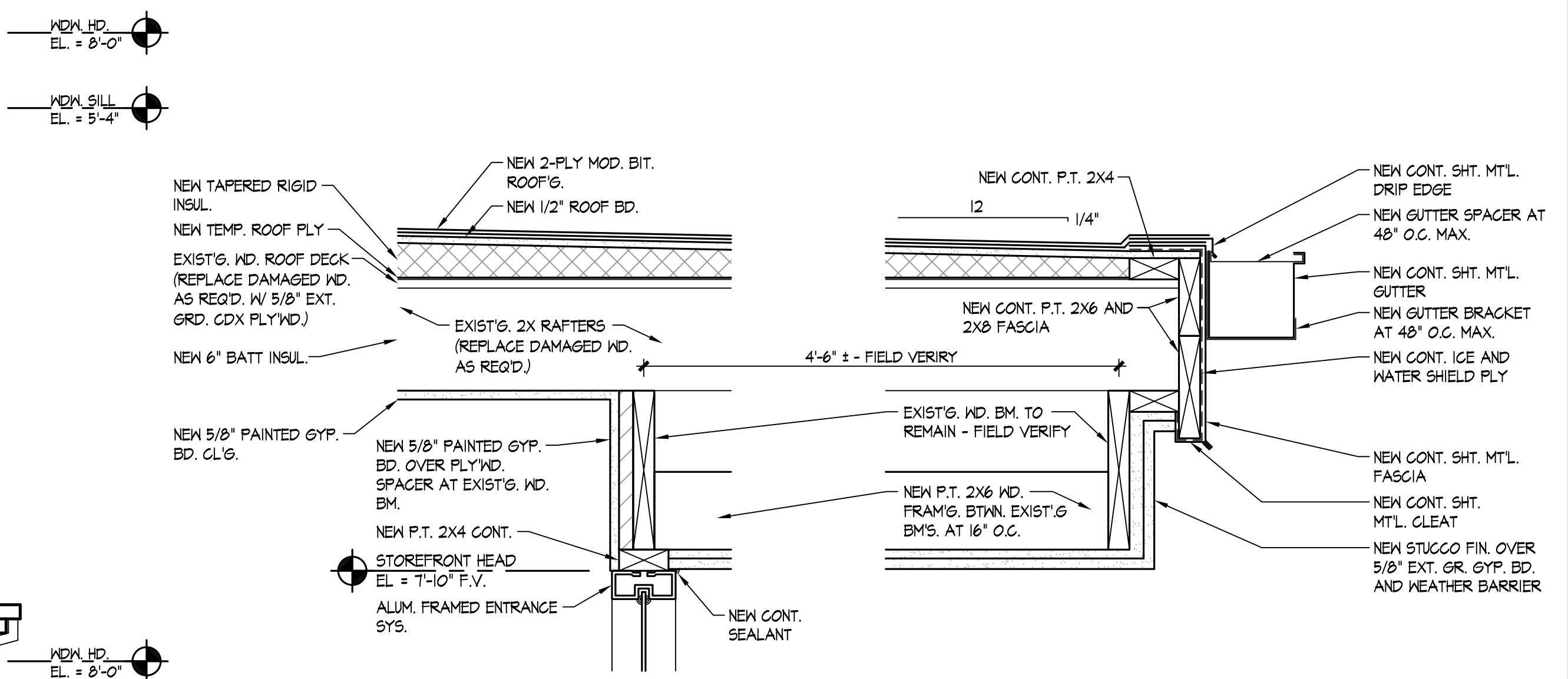
**SOUTH ELEVATION**  
 1/4" = 1'-0"



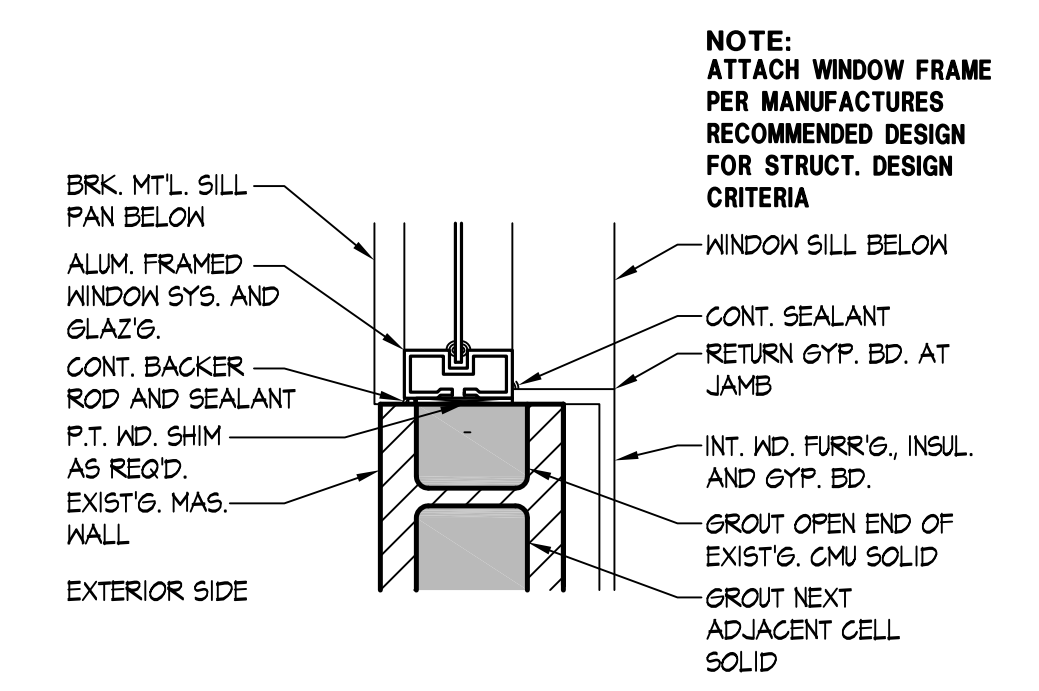
**EAST ELEVATION**  
 1/4" = 1'-0"



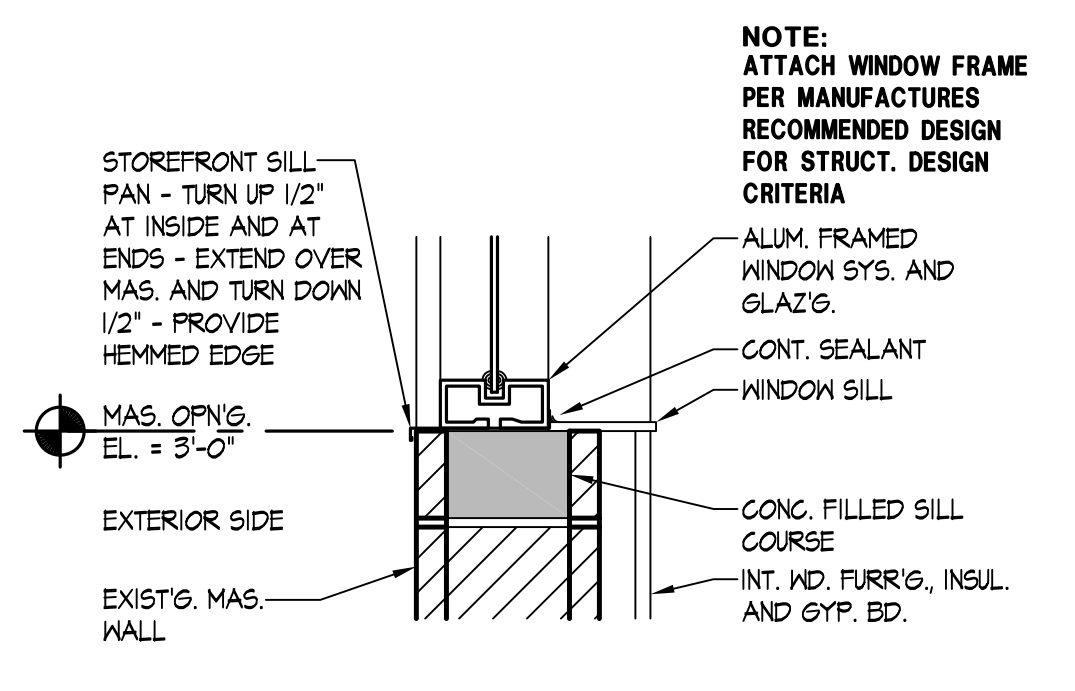
**WEST ELEVATION**  
 1/4" = 1'-0"



**ENTRY DETAIL**  
 3/4" = 1'-0"



**WDW. JAMB DETAIL**  
 1 1/2" = 1'-0"



**WDW. SILL DETAIL**  
 1 1/2" = 1'-0"