



Planning and Development Services

BUTLER PLAZA PB-12-149 LUC

Small-Scale Land Use Amendment

(Ordinance No. 121106)

9/19/13

121106B

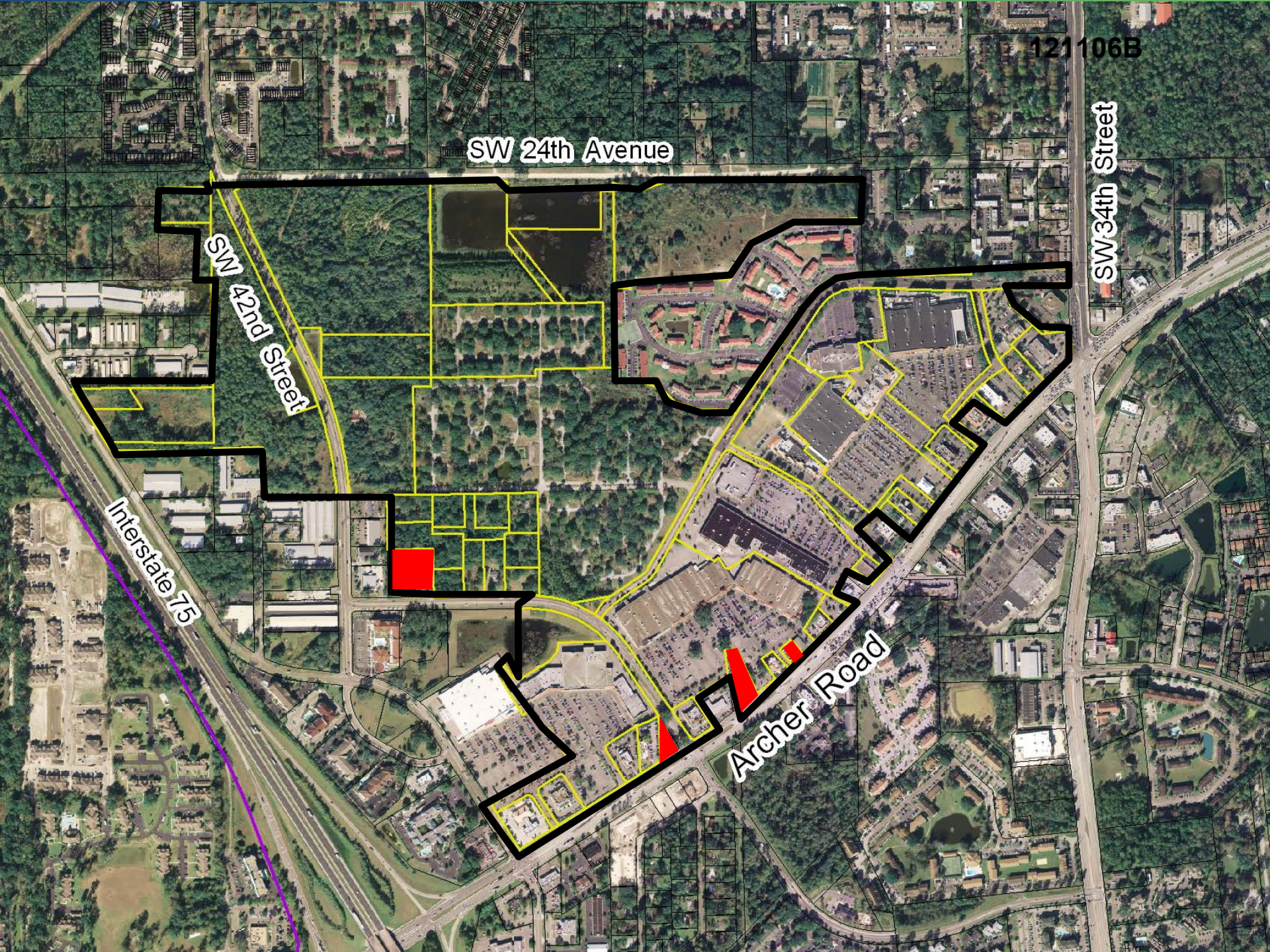
SW 24th Avenue

SW 42nd Street

SW 34th Street

Interstate 75

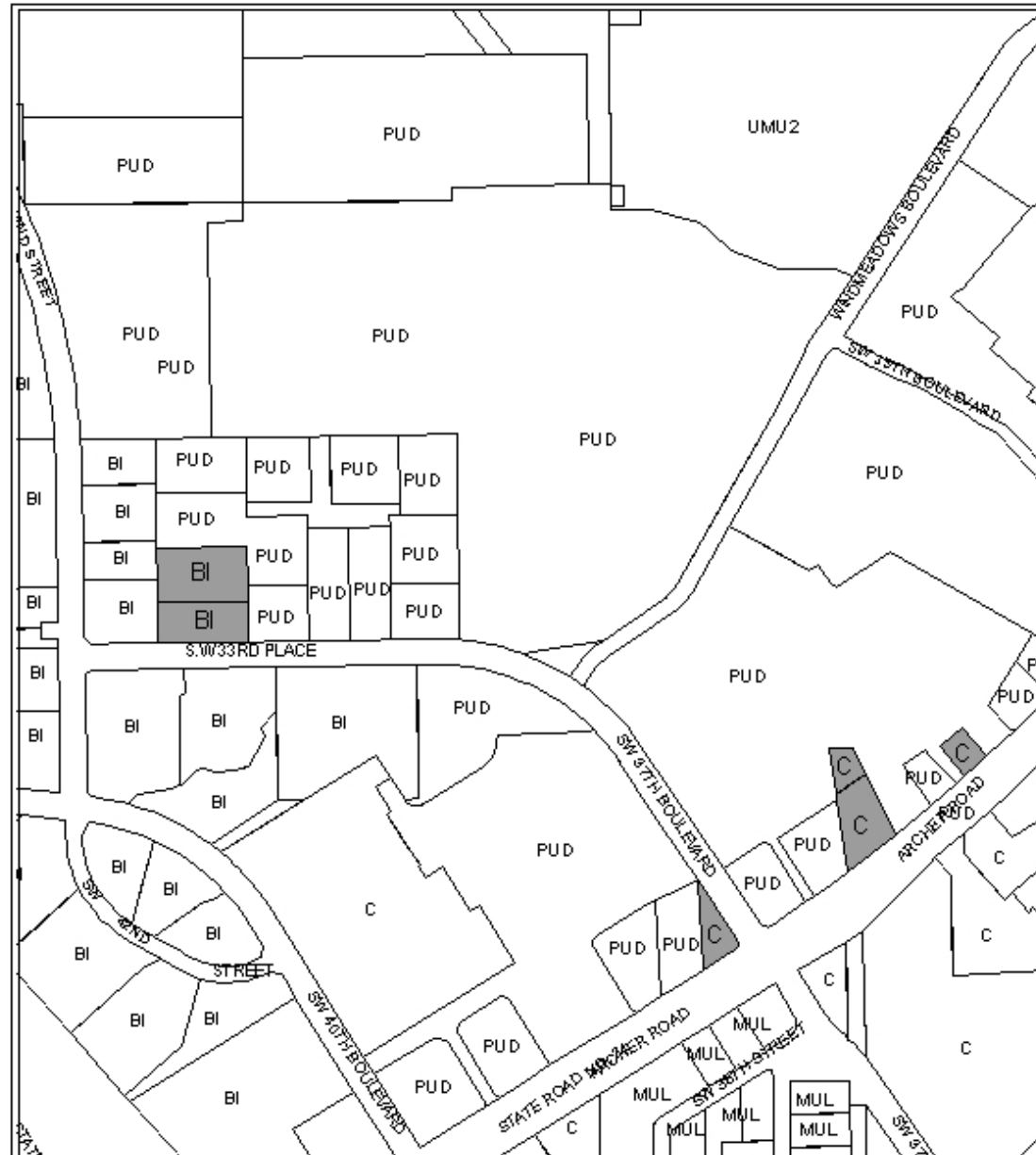
Archer Road



Existing Land Use Designations

City of Gainesville Land Use Designations

- MUL Mixed Use Low Intensity (8-30 du/acre)
- UMU2 Urban Mixed Use 2 (UMU-2: 10 to 100 du/acre; & up to 25 additional du/acre by special use permit)
- C Commercial
- BI Business Industrial
- PUD Planned Use District



Area
under petition
on side ration

City Limits

Adopt Ordinance 121106
(Butler Plaza Small-Scale Land
Use Amendment)