



Voter Turnout and Election Cost Report

Office of Strategic Planning

May 2009

Prepared by Kellie Dale, Intern, Office of Strategic Planning

I. Data Collection

I. a. Data Source

All election data was obtained from <http://elections.alachua.fl.us/>. Financial information obtained from Mark Benton, City of Gainesville Budget and Finance Director, bentonms@cityofgainesville.org.

I. b. Precinct Data

The data contained in this report is reflective of City precincts only, except for Alachua County voter turnout (see Graph 1), which includes both City and County precincts. Please note which precincts are included in the City limits, and their respective Districts:

Table 1

Commissioner Name	District	Precincts
Scherwin Henry	1	13, 16, 19, 25, 28, 29, 33, 55
Lauren Poe	2	12, 17, 21, 37, 38, 45, 57, 58, 61, 64
Jack Donovan	3	4, 24, 26, 32, 36, 40, 44, 54
Craig Lowe	4	5, 7, 23, 27, 31, 59

A list of all precincts and their locations is attached at the end of the document.

I. c. Turnout Calculation

- For each individual race in each election (as used in Graphs 1 – 4), turnout was calculated as:
Summation of **Total Votes** from each precinct divided by the summation of the number of **Registered Voters** in each precinct
- For the City turnout in elections (as used in Graphs 5 and 6), the percent turnout for each precinct was calculated as:
Cards Cast in the individual precinct divided by the number of **Registered Voters** in that precinct

1. d. Issues

Turnout percentages were collected for Local and State issues and races only. National issues and races were not included.

II. Alachua County versus City of Gainesville Turnout

Refer to Graphs 1 and 2 for comparison.

Table 2

Election	City Turnout	Alachua County Turnout	Difference
Presidential Elections (11/4/08)	69.66%	72.07%	-2.41%
General Elections (11/7/06)	38.77%	45.02%	-6.25%
Presidential Primaries (1/29/08)	38.26%	39.53%	-1.27%
General Primaries (9/5/06)	24.50%	27.80%	-3.30%
County Primaries (8/26/08)	22.16%	24.36%	-2.20%
City Elections/Run-offs	16.83%	----	----

III. City Election Costs

Refer to Graph 3.

Table 3

Regular Election Date	Cost	Run-Off Date	Cost	Total Year Cost
3/29/05	\$69,952.61	4/19/05	\$18,622.18	\$88,574.79
3/7/06	\$88,814.13			\$88,814.13
3/6/07	\$101,612.11			\$101,612.11
1/29/08	\$59,734.64 *	2/19/08	\$33,671,37	\$93,406.01
3/24/09	\$118,000 **			\$118,000**

The City of Gainesville pays for all costs associated with running its' own elections. As seen in the above table, costs are increasing each year.

* Every four years, when the Presidential Primary is held during January City elections for that year are moved up to run concurrent with the Presidential Primary. The costs are shared by the County and the City, so the City's cost for the 2008 City elections (not including the run-off) was \$59,734.64. This is significantly less than the cost of regular city elections when held alone. The price decrease is due to shared burden of costs with the County. The cost savings are illustrated in table 4.

** The final numbers are not in from the March 2009 City elections, but the Supervisor of Elections estimates the figure to be around \$118,000.

III. b. Cost savings of a concurrent City/County Election

Table 4

Election	City Cost	# of City Voters	Cost per Voter
3/6/07 Regular City Election	\$101,612.11	7395	\$13.74
1/29/08 City Election/ Presidential Primary	\$59,734.64	23799	\$2.51

IV. Observations of City Voter Turnout

Refer to Graph 3

IV. a. District 2

In both the 3/29/05 City Election and in the 1/29/08 Presidential Primary Election, turnout for District 2 was higher than any other issue or seat race on the ballot.

In addition, the 2/19/08 City District 2 Run off was considerably high (19.35%), as compared to other City run-off elections.

As well, as seen in Graph 6, District 2 Precincts had the highest average turnout of all Districts for the 11/4/08 Presidential Election. Graph 7 demonstrates that once again District 2 Precincts had the highest average turnout for all districts for the 3/24/09 Regular City Election,

Thus, it appears that District 2 has unusually high voter turnout as compared to the other districts.

I.V. b. 11/4/08 State and Local Races/ Issues City Turnout

- o The highest turnout in state and/or local races/issues for the 11/4/08 Presidential Election was for State Amendment 2, the Florida Marriage Protection Act, at 76.90%.

Possible Reasons:

- 1) Incredible amount of advertising on both sides- many voters knowledgeable on issue
- 2) National attention
- 3) Controversial subject matter

- The next highest turnout was for Wild Spaces/Public Places at 72.33%
 - Possible Reasons:
 - 1) Intense advertising/marketing campaign- many voters knowledgeable on issue

- Amendment 1 (Proposing an amendment to the State Constitution to delete provisions authorizing the Legislature to regulate or prohibit the ownership, inheritance, disposition, and possession of real property by aliens ineligible for citizenship) also had a high turnout of at 71.06%
 - Possible Reasons:
 - 1) Clear wording
 - 2) First amendment item on the ballot

- School Board Tax had a high turnout at 70.83%
 - Possible Reasons:
 - 1) Intense advertising/marketing campaign- many voters knowledgeable on issue

- Amendments 3, 4, and 6 had less turnout at 67.68%, 66.33%, and 63.86%, respectively
 - Possible Reasons:
 - 1) Confusing wording
 - 2) Lack of knowledge due to minimal advertising campaigns

I.V. c. 3/24/09 Regular City Election

The highest voter turnout was on Charter Amendment 1 (Changes to the City's Anti-Discrimination Laws), at 26.74% and then on Charter Amendment 2 (Registry of Protected Places), at 25.11%. The turnout on each issue was higher than the turnout on either candidate race, with the At-large Commission Seat at 23.54% and District 1 Commission Seat at 17.99%. Thus, it appears that city residents came out to vote more on issues than on candidates.

V. Observations of Precinct Turnout

Refer to Graphs 5 – 7.

V. a. Summary

As seen in Graph 5 and in Table 5 below, the City precincts follow a particular pattern in their voter turnouts relative to one another. Since there was unusually high turnout in the 11/4/08 Presidential Election, there is less variance in precinct turnout. However, for all other elections, precincts trend towards similar voter turnout numbers relative to the other precincts.

- Generally High Voter Turnout:
 - 1) Precinct 17: Elks Lodge #990, 2424 NW 23rd Blvd.
 - 2) Precinct 24: B'nai Israel, 3830 NW 16th Blvd.
 - 3) Precinct 40: University City Church of Christ, 4626 NW 8th Ave.
 - 4) Precinct 58: Lighthouse Baptist, 2611 NW 68th Ave.
 - 5) Precinct 64: Westminster Presbyterian Church, 1521 NW 34th St,

- Generally Low Turnout
 - 1) Precinct 23: American Cancer Society's Hope Lodge, 2121 SW 16th St.
 - 2) Precinct 31: J. Wayne Reitz Union, Museum Road, UF Campus
 - 3) Precinct 44: Performing Arts Center, 315 Hull Rd., UF Campus
 - 4) Precinct 54: Harn Museum, Hull Rd. & SW 34th St., UF Campus
 - 5) Precinct 59: Days Inn/University, 1901 SW 13th St.

V. b. Data used in Graph 5- Precinct Turnout

Table 5

Precinct	Presidential Election 11/4/08	General Election 11/7/2006	City Election 3/24/09	County Primary 8/26/08	City Election 3/6/07
4	80.70%	52.05%	34.27%	27.41%	16.70%
5	83.15%	41.72%	30.29%	23.45%	15.04%
7	78.43%	39.06%	28.49%	20.78%	8.91%
12	79.27%	51.69%	34.06%	28.05%	12.84%
13	73.69%	43.36%	17.98%	27.21%	10.55%
16	78.40%	34.83%	24.96%	16.99%	6.99%
17	86.78%	62.44%	46.60%	39.75%	19.77%
19	70.49%	34.75%	21.99%	15.73%	7.56%
21	78.89%	43.34%	25.59%	18.68%	6.47%
23	76.98%	25.96%	14.87%	7.84%	5.11%
24	87.78%	61.22%	44.17%	39.04%	19.16%
25	85.56%	29.73%	17.79%	13.59%	5.51%
26	80.28%	50.98%	34.46%	27.80%	14.41%
27	79.79%	55.86%	39.39%	28.37%	18.97%
28	75.22%	42.48%	22.63%	28.60%	10.41%
29	80.41%	48.43%	31.48%	28.72%	14.00%
31	86.95%	17.77%	17.12%	1.47%	1.03%
32	79.12%	33.07%	16.98%	13.99%	5.64%
33	69.92%	39.95%	20.62%	22.49%	8.43%
37	84.45%	57.56%	39.19%	30.06%	14.7%
38	81.11%	55.21%	35.52%	26.73%	14.9%
40	85.72%	70.66%	46.47%	42.20%	21.2%
44	78.97%	19.23%	10.09%	4.31%	1.7%
45	85.28%	59.05%	34.58%	30.95%	13.5%
54	78.57%	26.26%	15.32%	11.10%	3.9%
55	71.42%	32.11%	17.22%	18.32%	7.6%
57	84.08%	56.75%	34.97%	25.08%	12.1%
58	83.38%	65.10%	47.47%	37.59%	23.1%
59	78.39%	28.29%	18.01%	9.52%	5.9%
61	86.07%	66.56%	45.33%	39.48%	21.6%
64	87.37%	66.27%	52.76%	44.96%	22.6%

VI. Instant Runoff Voting

Information source: <http://www.instantrunoff.com/why/runoffs.php>

V. a. Major Problems with Runoff Elections

- 1) Additional election administration costs (refer to Table 3).
- 2) A second election means that candidates must raise even more money in order to compete
- 3) Because most races are decided in the first round of voting, the races that go to a runoff often have significantly lower turnout in the decisive runoff election.

V. b. What is Instant Runoff Voting (IRV)?

Under IRV, voters rank candidates in order of preference on a single ballot. If a candidate receives a majority of first choices, he or she is elected. If no candidate receives a majority, the candidate with the fewest first choices is eliminated. Voters who ranked the eliminated candidate first now have their ballots counted for their second choice. This process continues until one candidate earns a majority.

V. c. United States Cities Currently Using IRV

- 1) Current Implementations:
 - ✓ Arkansas (adopted 2007; overseas voters; in runoffs)
 - ✓ Burlington, VT (adopted 2005; mayoral elections)
 - ✓ Hendersonville, North Carolina (adopted 2007 and 2009 as pilot)
 - ✓ Louisiana (adopted 1990s; overseas/ military voters in federal/ state runoffs)
 - ✓ Pierce County, WA (adopted 2006; county executive, county council and most other county offices)
 - ✓ San Francisco, CA (adopted 2002; mayor and most city offices)
 - ✓ Springfield, IL (adopted 2007; overseas voters)
 - ✓ South Carolina (adopted 2006; overseas voters in federal and state runoffs)
 - ✓ Takoma Park, MD (adopted 2006; mayor and city council)

2) Upcoming (as of March 2009) implementations in the United States:

- ✓ Aspen, CO (adopted 2007; May 2009 for mayor and city council)
- ✓ Berkeley, CA (adopted 2004; scheduled November 2010 for mayor and city council)
- ✓ Memphis, TN (adopted 2008; scheduled 2011 for mayor and several other city offices)
- ✓ Minneapolis, MN (adopted 2006; scheduled November 2009 for mayor and city council)
- ✓ Oakland, CA (adopted 2006; scheduled November 2010 for mayor and city council)
- ✓ Telluride, CO (adopted 2008; scheduled November 2011 for mayor)

3) Advisory, Option or Contingent Measure in the United States:

- ✓ Ferndale, MI (adopted 2004)
- ✓ Santa Clara County, CA (adopted 1998)
- ✓ San Leandro, CA (adopted 2000)
- ✓ Santa Fe, NM (adopted 2008)
- ✓ Sarasota, FL (adopted 2007)
- ✓ Vancouver, WA (adopted 1999)

VII. Raw Data

Election	Race	Alachua County Turnout	City Turnout	Difference
City Election	District 4, 3/6/08	8.96%	8.96%	0.00%
City Election	Mayor, 3/6/08	10.71%	10.71%	0.00%
City Election	District 3, 3/29/05	12.07%	12.07%	0.00%
City Election	At Large 2, 3/29/05	12.79%	12.79%	0.00%
City Election	District 1, 3/7/06	13.68%	13.68%	0.00%
City Election	District 3, 4/19/05	13.78%	13.78%	0.00%
City Election	Parks and Recreation, 3/7/06	15.36%	15.36%	0.00%
City Election	At Large Seat 1, 3/7/06	16.19%	16.19%	0.00%
City Election	District 1, 3/24/09	17.99%	17.99%	0.00%
City Election	District 2, 2/19/08	19.35%	19.35%	0.00%
City Election	District 2, 3/29/05	19.40%	19.40%	0.00%
County Primary	School Board 4, 8/26/08	21.55%	19.41%	2.15%
County Primary	School Board 2, 8/26/08	22.51%	20.62%	1.89%
Primary Election	School Board 5, 9/5/06	23.40%	20.02%	3.38%
Primary Election	School Board 1, 9/5/06	23.45%	20.05%	3.40%
County Primary	Property Appraiser, 8/26/08	23.52%	21.16%	2.36%
City Election	At Large 1, 3/24/09	23.54%	23.54%	0.00%
County Primary	Sheriff, 8/26/08	24.36%	22.07%	2.29%
City Election	Amendment 2, 3/24/09	25.11%	25.11%	0.00%
City Election	Amendment 1, 3/24/09	26.74%	26.74%	0.00%
County Primary	County Commission 1 (Dem), 8/26/08	29.84%	27.52%	2.32%
Primary Election	County Commissioner, 9/5/06	31.53%	28.33%	3.20%
Primary Election	Sheriff (DEM), 9/5/06	32.82%	29.60%	3.22%
Presidential Primary	District 3, 1/29/08	33.51%	33.41%	0.10%
Presidential Primary	At Large, 1/29/08	35.05%	34.94%	0.11%
General Election	State Planning and Budget Process, 11/7/06	41.98%	35.79%	6.19%

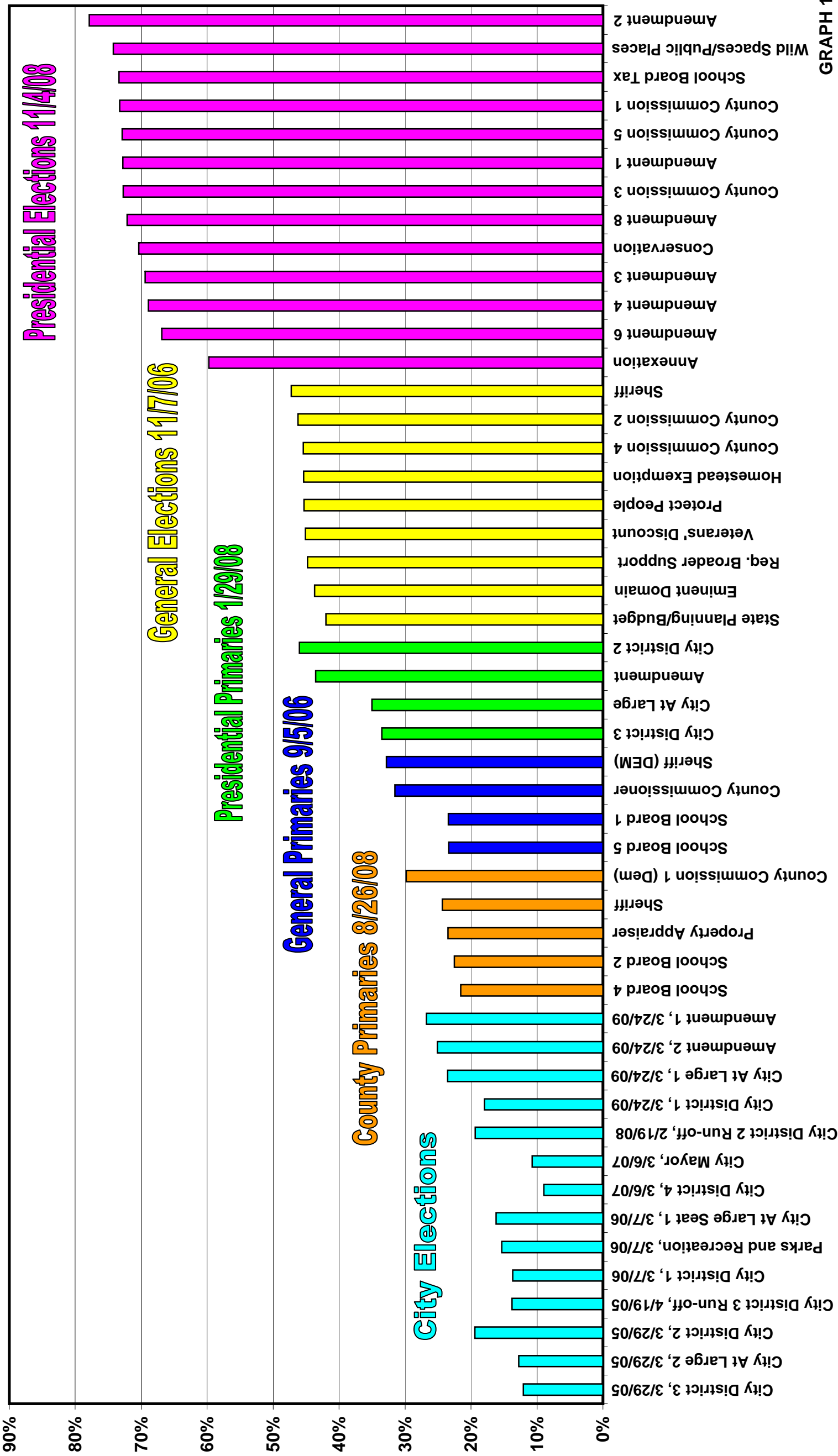
Election	Race	Alachua County Turnout	City Turnout	Difference
Presidential Primary	Amendment, 1/29/08	43.54%	39.43%	4.10%
General Election	Eminent Domain, 11/7/06	43.69%	37.41%	6.28%
General Election	Requiring Broader Public Support for Constitution, 11/7/06	44.77%	38.59%	6.18%
General Election	Permanently Disabled Veterans' Discount, 11/7/06	45.10%	38.68%	6.42%
General Election	Protect People, Especially Youth, From Addiction, 11/7/06	45.33%	39.22%	6.11%
General Election	Increased Homestead Exemption, 11/7/06	45.40%	38.92%	6.48%
General Election	County Commission 4, 11/7/06	45.41%	39.37%	6.04%
Presidential Primary	District 2, 1/29/08	46.02%	45.84%	0.18%
General Election	County Commission 2, 11/7/06	46.24%	40.02%	6.22%
General Election	Sheriff, 11/7/06	47.24%	40.95%	6.29%
Presidential Election	Annexation, 11/4/08	59.76%	59.76%	0.00%
Presidential Election	Amendment 6, 11/4/08	66.89%	63.86%	3.03%
Presidential Election	Amendment 4, 11/4/08	68.92%	66.33%	2.59%
Presidential Election	Amendment 3, 11/4/08	69.41%	65.66%	3.75%
Presidential Election	Conservation/Recreation/Cultural, 11/4/08	70.38%	67.68%	2.69%
Presidential Election	Amendment 8, 11/4/08	72.12%	70.10%	2.02%
Presidential Election	County Commission 3, 11/4/08	72.73%	70.11%	2.62%
Presidential Election	Amendment 1, 11/4/08	72.80%	71.06%	1.74%
Presidential Election	County Commission 5, 11/4/08	72.91%	70.30%	2.61%
Presidential Election	County Commission 1, 11/4/08	73.26%	70.71%	2.54%
Presidential Election	School Board Tax, 11/4/08	73.40%	70.83%	2.57%
Presidential Election	Wild Spaces/Public Places, 11/4/08	74.23%	72.33%	1.90%
Presidential Election	Amendment 2, 11/4/08	77.85%	76.90%	0.95%

Street Addresses of all Alachua County Polling Places

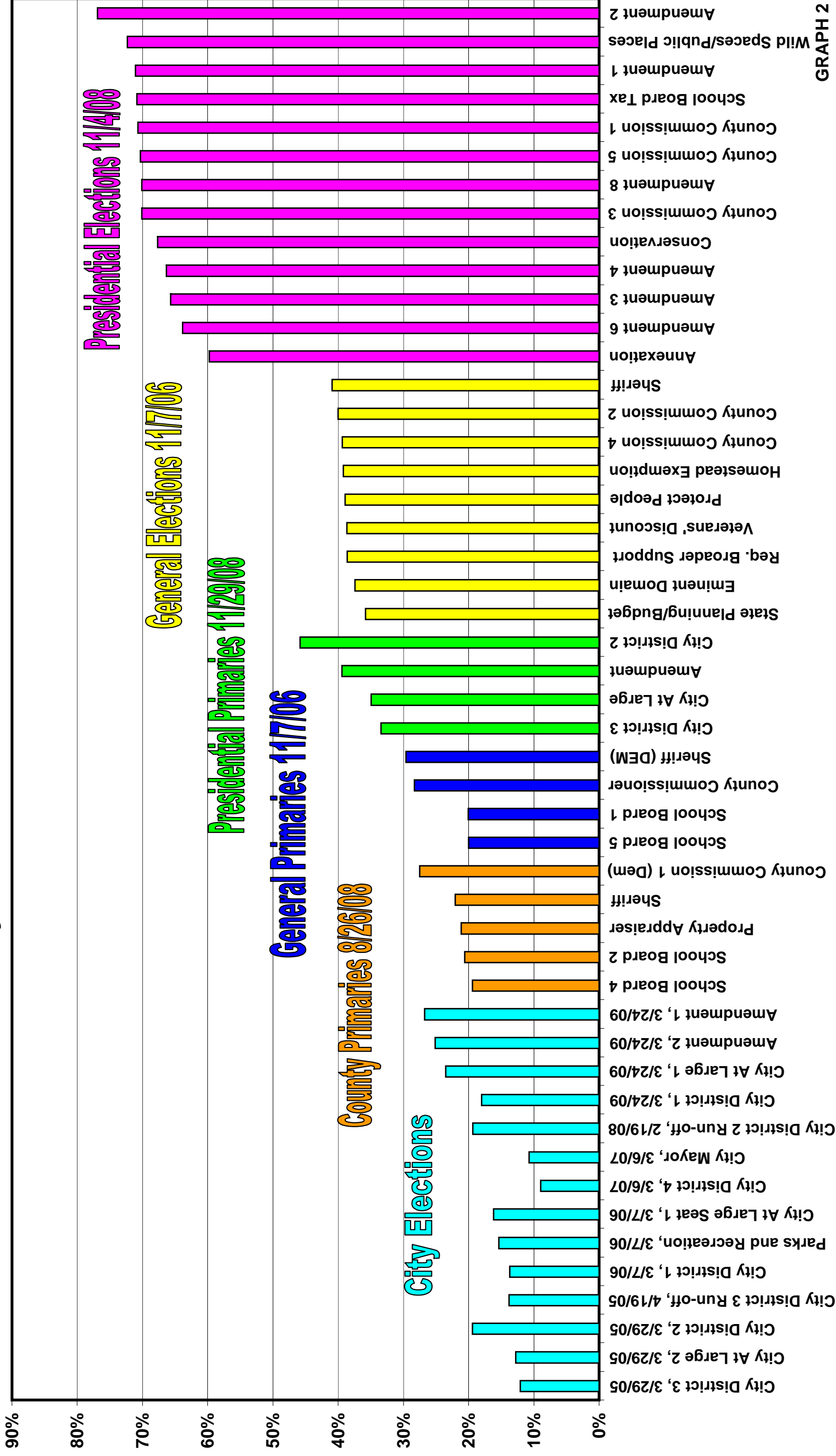
PRECINCT/POLLING PLACE	ADDRESS
1. First Baptist Church of Waldo	14370 Kennard St., Waldo
2. LaCrosse Town Hall	20613 North SR 121, LaCrosse
3. Alachua Recreation Center	14300 NW 146 th Ter., Alachua
4. Campus Church of Christ	2720 SW 2 nd Ave., Gainesville
5. First Lutheran Church	1801 NW 5 th Ave., Gainesville
6. Newberry Fire Station	310 NW 250 th St. (SR 41), Newberry
7. Ignite Life Center	NW 15 th Ave. & NW 4 th St., Gainesville
8. Hawthorne City Hall	6700 SE 221 st St., Hawthorne
9. Island Grove Baptist Church	20905 SE 219 th Ave., Island Grove
10. Micanopy Town Hall	706 NE Chokolka Blvd., Micanopy
11. Santa Fe College (Davis Center)	17500 SW Archer Rd., Archer
12. Parkview Baptist Church	3403 NW 13 th St., Gainesville
13. Mt. Carmel Baptist Church	2505 NE 8 th Ave., Gainesville
14. Eliam Baptist Church	6009 NE Hampton St., Melrose
15. Windsor Baptist Church	918 SE County Rd. 234, (Windsor)
16. Wilhelmina Johnson Resource Center	321 NW 10 th St., Gainesville
17. Elks Lodge # 990	2424 NW 23 rd Blvd., Gainesville
18. Kanapaha Presbyterian Church	6221 SW 75 th Ter., Gainesville
19. Springhill Baptist Church	120 SE Williston Rd., Gainesville
20. High Springs Civic Center	330 NW Santa Fe Blvd., High Springs
21. First Assembly of God Church	2925 NW 39 th Ave., Gainesville
22. First Church of the Nazarene	5020 NW 23 rd Ave., Gainesville
23. American Cancer Society's Hope Lodge	2121 SW 16 th St., Gainesville
24. B'nai Israel	3830 NW 16 th Blvd., Gainesville
25. SFC Center Innov/Eco Development	530 W University Ave., Gainesville
26. Westside Recreation Center	1001 NW 34 th St., Gainesville
27. Thelma Boltin Activity Center	516 NE 2 nd Ave., Gainesville
28. McPherson Recreation Center	1717 SE 15 th St., Gainesville
29. R. T. Schafer Lodge	2505 NE 9 th St., Gainesville
30. Greater Bethel A.M.E. Church	701 SE 43 rd St., Gainesville
31. J. Wayne Reitz Union	Museum Rd., UF Campus, Gainesville
32. Lifesouth Community Blood Centers	4039 Newberry Rd., Gainesville
33. Highlands Presbyterian Church	1001 NE 16 th Ave., Gainesville
34. Fairbanks Baptist Church	5709 NE 78 th Pl., Fairbanks
35. Southwest United Methodist Church	2400 SW Williston Rd., Gainesville
36. Doyle Conner Building	1911 SW 34 th St., Gainesville

37. Unitarian Universalist Fellowship	4225 NW 34 th St., Gainesville
38. Warehouse at Farmer's Market	Corner of NW 34 th St. & US 441, Gainesville
39. Living Faith Fellowship	5510 NW 39 th Ave., Gainesville
40. University City Church of Christ	4626 NW 8 th Ave., Gainesville
41. Cornerstone	100 Castle Dr., Gainesville
42 (A - L). Tower Road Branch Library 42 (M - Z). Anthem Community Church	3020 SW 75 th St., Gainesville 2902 SW 75 th St., Gainesville
43. Grace United Methodist Church	9325 Newberry Rd., Gainesville
44. Performing Arts Center	315 Hull Rd., UF Campus, Gainesville
45. Trinity United Methodist Church	4000 NW 53 rd Ave., Gainesville
46. Westside Baptist Church	10000 W. Newberry Rd., Gainesville
47. The Family Church	2022 SW 122 nd St., Gainesville
48. Oak Park Baptist Church	4610 SW Archer Rd., Gainesville
49. Jonesville Fire Station	401 NW 143 rd St., Newberry
50. (incorporated into Precinct # 3)	
51. Faith Presbyterian Church	5916 NW 39 th Ave., Gainesville
52. Disabled American Veterans State HQ	2015 SW 75 th St, Gainesville
53. (incorporated into Precinct # 3)	
54. Harn Museum, UF	Hull Rd. & SW 34 th St., Gainesville
55. Carpenter's Local 75 Union Hall	1910 NW 53 rd Ave., Gainesville
56. Covenant Presbyterian Church	1001 NW 98 th St., Gainesville
57. Z. L. Sung Seventh Day Adventist Sch.	2115 NW 39 th Ave., Gainesville
58. Lighthouse Baptist	2611 NW 68 th Ave., Gainesville
59. Days Inn/University	1901 SW 13 th St., Gainesville
60. Fellowship Church of High Springs	16916 NW Hwy. 441, High Springs
61. The Atrium	2431 NW 41 st St., Gainesville
62. North Central Baptist Church	8001 NW 23 rd Ave., Gainesville
63. Turkey Creek Golf & CC	11400 Turkey Creek Blvd., Alachua
64. Westminster Presbyterian Church	1521 NW 34 th St., Gainesville
65. Newberry United Methodist Church	24845 Newberry Rd., Newberry
66. Best Western Gateway Grand Hotel	4200 NW 97 th Blvd., Gainesville
67. Oak Dale Baptist Church	17015 W. Newberry Rd., Jonesville
68. Gainesville Shrine Club	8100 SW Archer Rd., Gainesville
69. Haile Meeting Hall	5100 SW 91 st Ter., Gainesville
70. North Pleasant Grove Baptist Church	25330 NW CR 239, Alachua/LaCrosse
71. Archer United Methodist Church	400 West Church Blvd., Archer

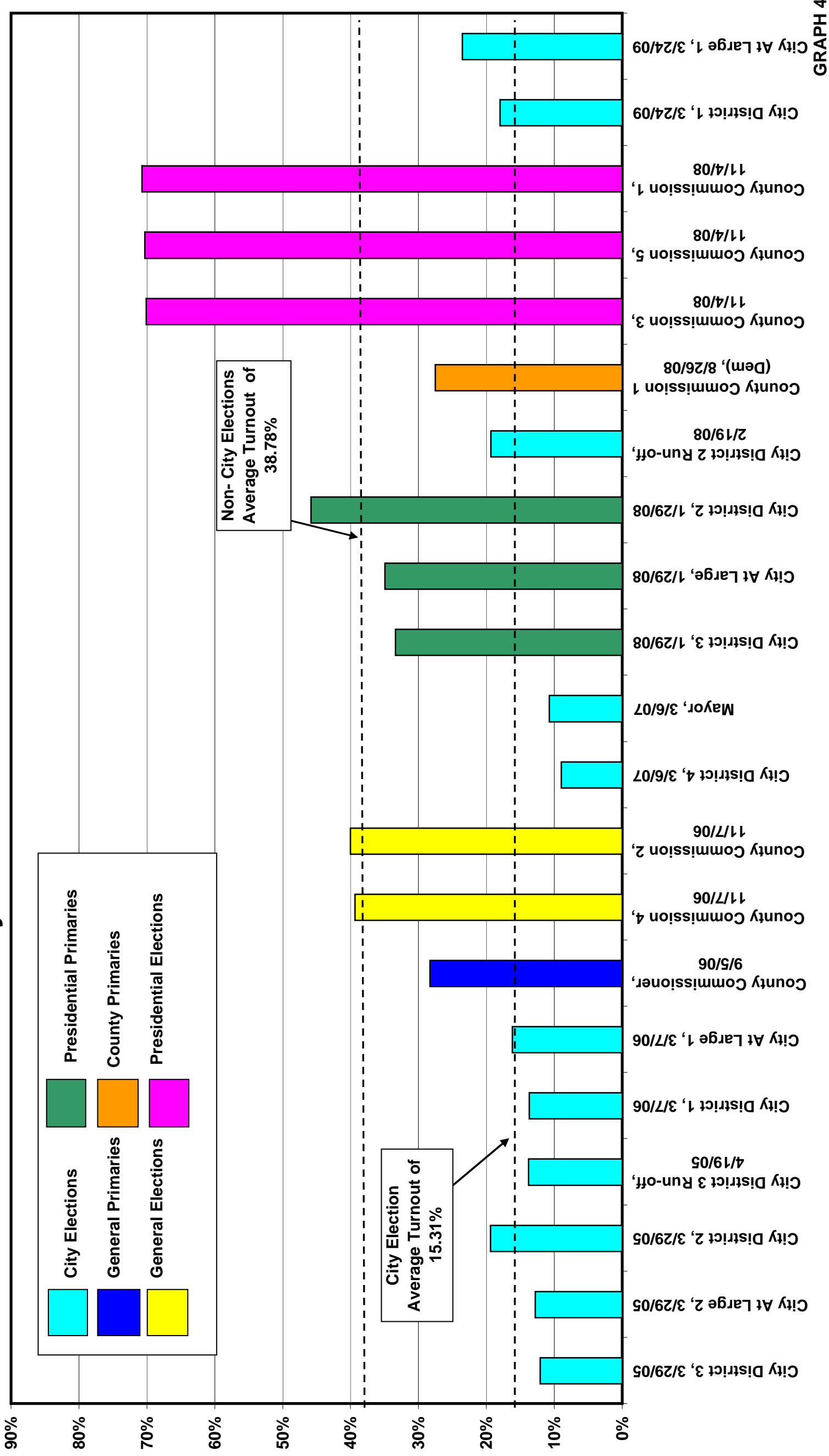
Alachua County Voter Turnout



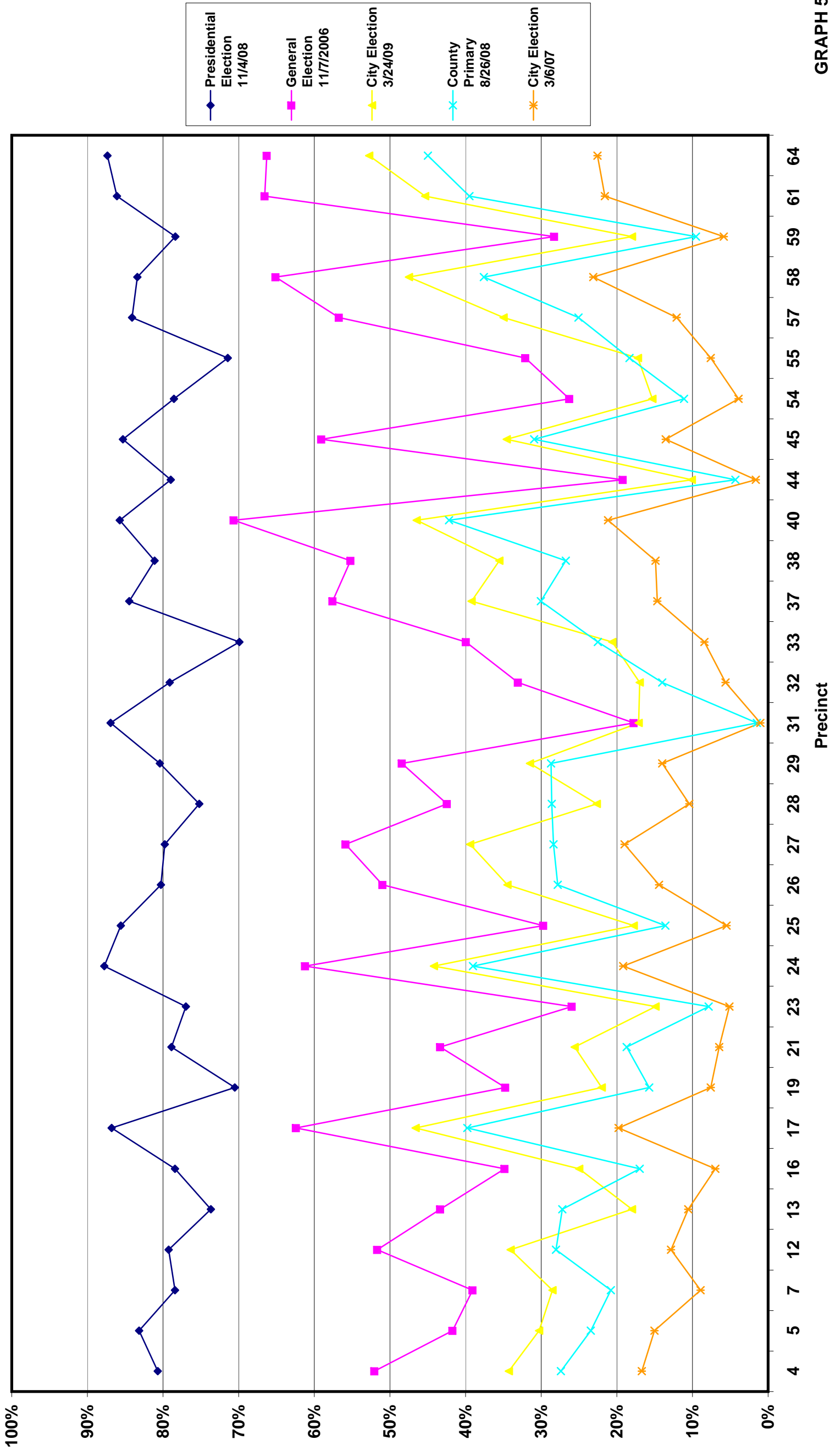
City of Gainesville Voter Turnout



City of Gainesville Voter Turnout

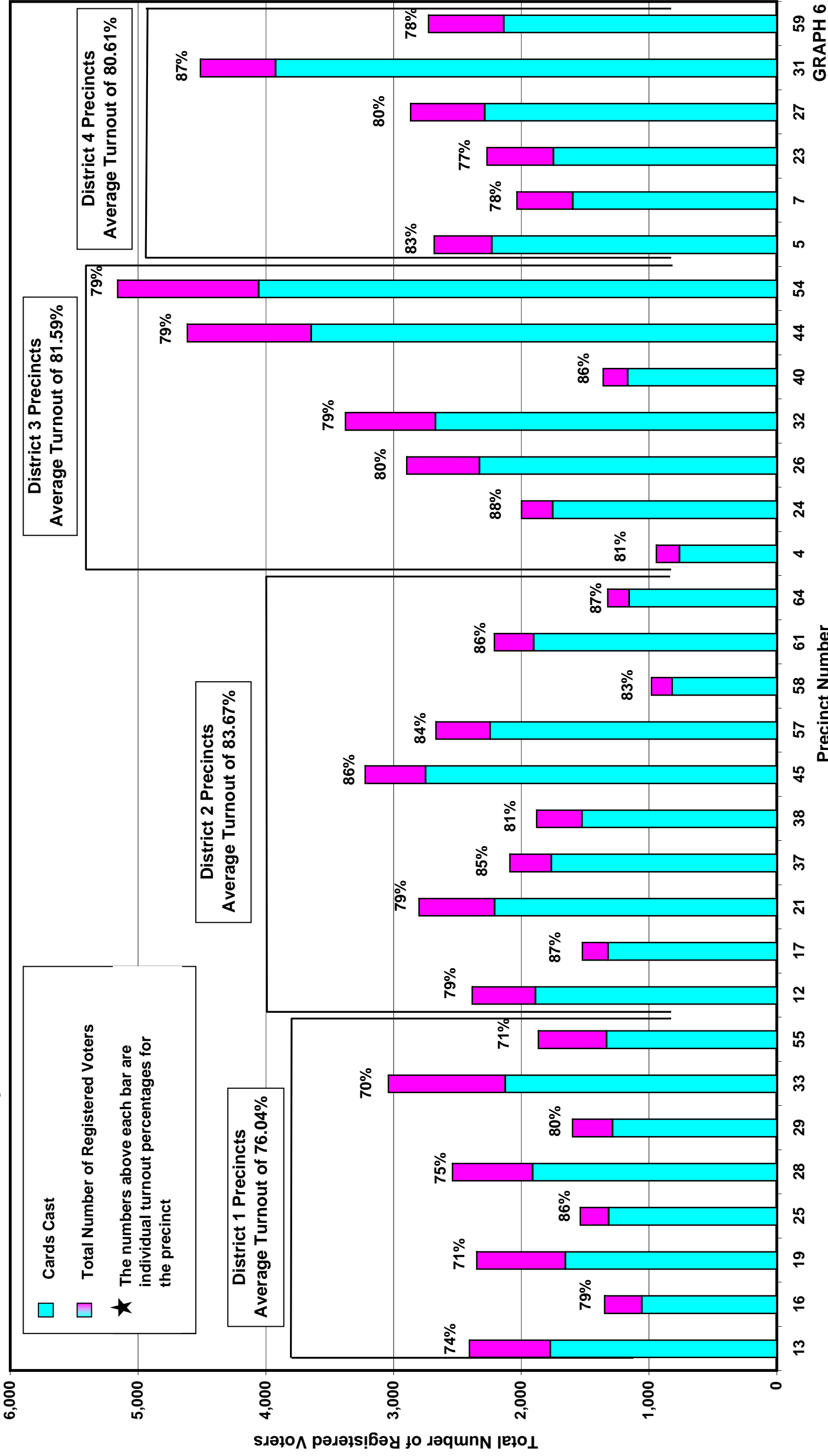


Turnout by City Precinct



Precinct

City Turnout in November 4, 2008 Presidential Election



Turnout in March 24, 2009 Regular City Election

