

LEGISTAR # 200947 A



**City of Gainesville, GCRA Annual Update for FY2020**  
Joint City of Gainesville and Alachua County Commission: March 29, 2021



# G C R A

Gainesville Community Reinvestment Area  
10 Year Reinvestment Plan

# Guiding Principles



1. Improve the **Quality of Life** for all Citizens of the Reinvestment Area
2. Allow for a **Dynamic and Diverse** Community for All Ages, Ethnicities, and Incomes to Flourish
3. Utilize **Socially, Economically and Environmentally Sustainable** Methods
4. Form **Partnerships**
5. Create Opportunities for **Economic Development, Local Businesses and Employment**
6. Ensure a Quality and Diverse **Range of Housing Options**
7. Create **Public Spaces Unique to Gainesville** and the People who Live here
8. Provide a **Safe and Efficient Transportation Network** for Pedestrians, Bikes, Cars and Buses
9. Create Quality Local Destination Areas for **Retail and Entertainment**

# Consolidated Reinvestment Objectives

**Economic Development**

**Community Enhancements and  
Housing**

**Public Space & Streetscape**

# Economic Development



Commercial Building Facade Incentives

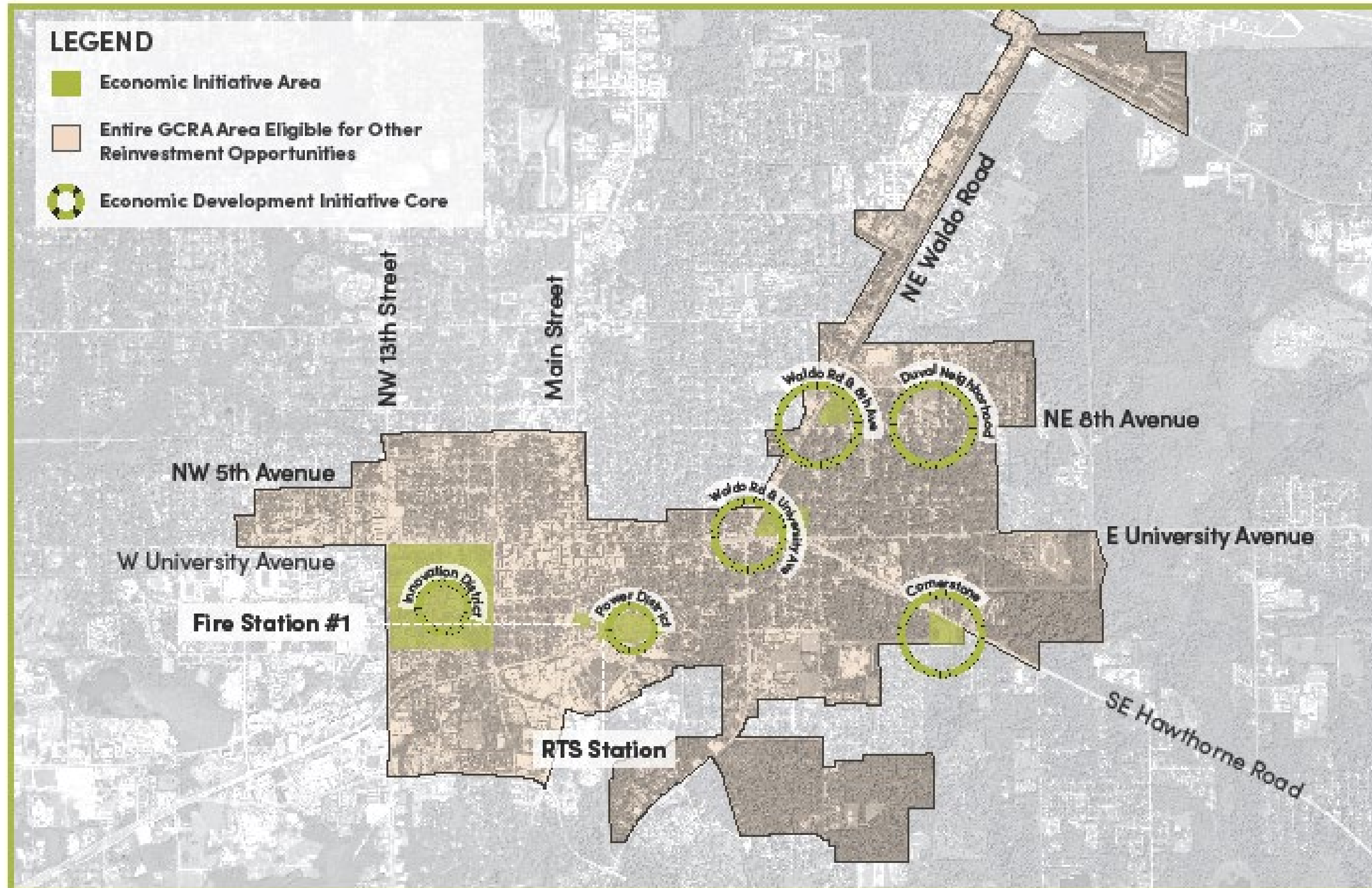
Arts & Cultural Activities

Public Private Partnerships

Parks & Plazas

# Economic Development

This map shows the priority areas for economic development initiatives as determined by the community, City, consultants and GCRA.



# Community Enhancements & Housing



Parks & Plazas

Local History Initiatives

Arts & Cultural Activities

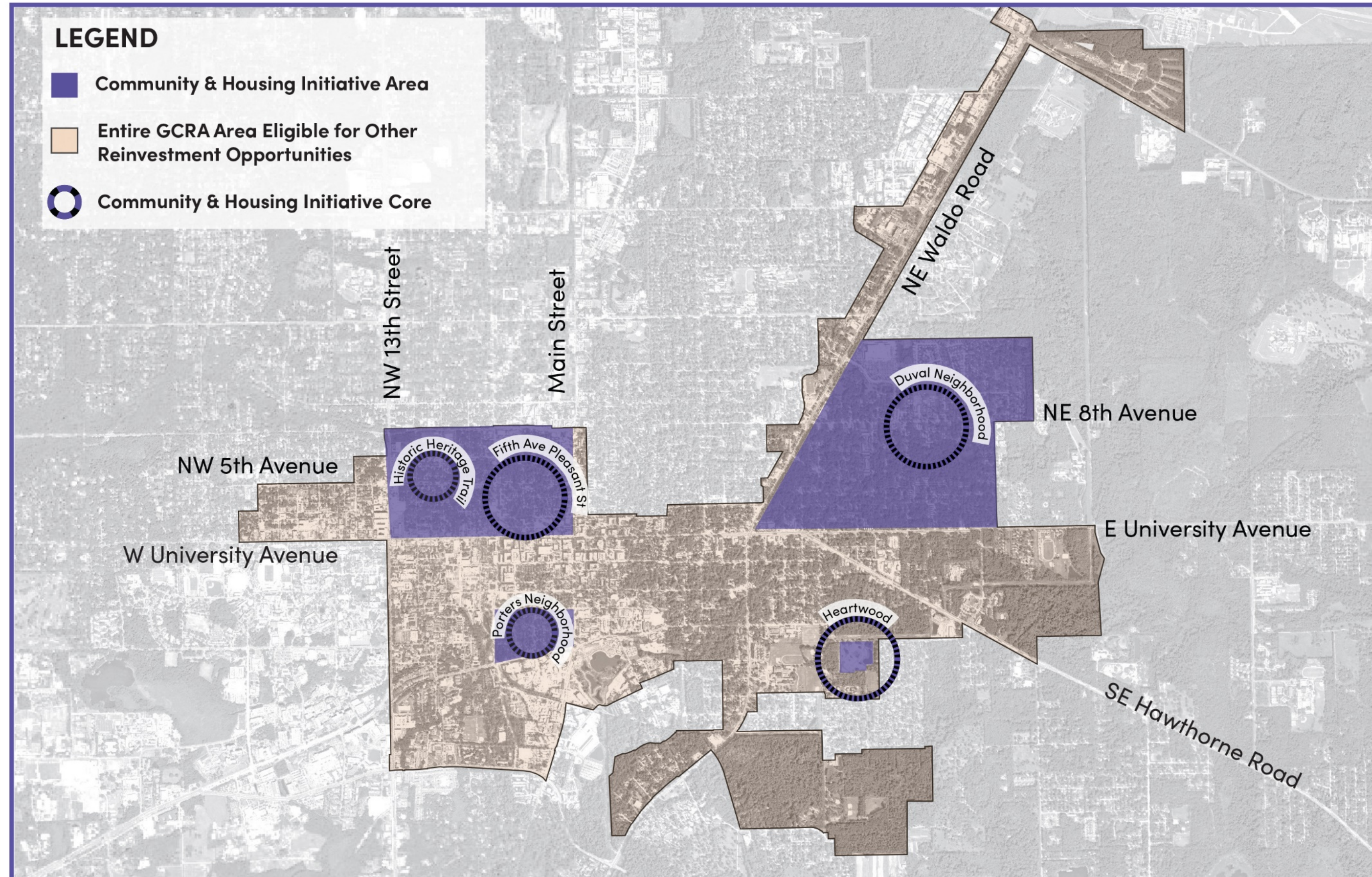
Food Access

Branding, Identity & Wayfinding



# Community Enhancement & Housing

This map shows the priority areas for community enhancement & housing initiatives as determined by the community, City, consultants and GCRA.



# Public Space & Streetscape



Green Infrastructure

Lighting & Safety

Corridors

Bicycle Facilities

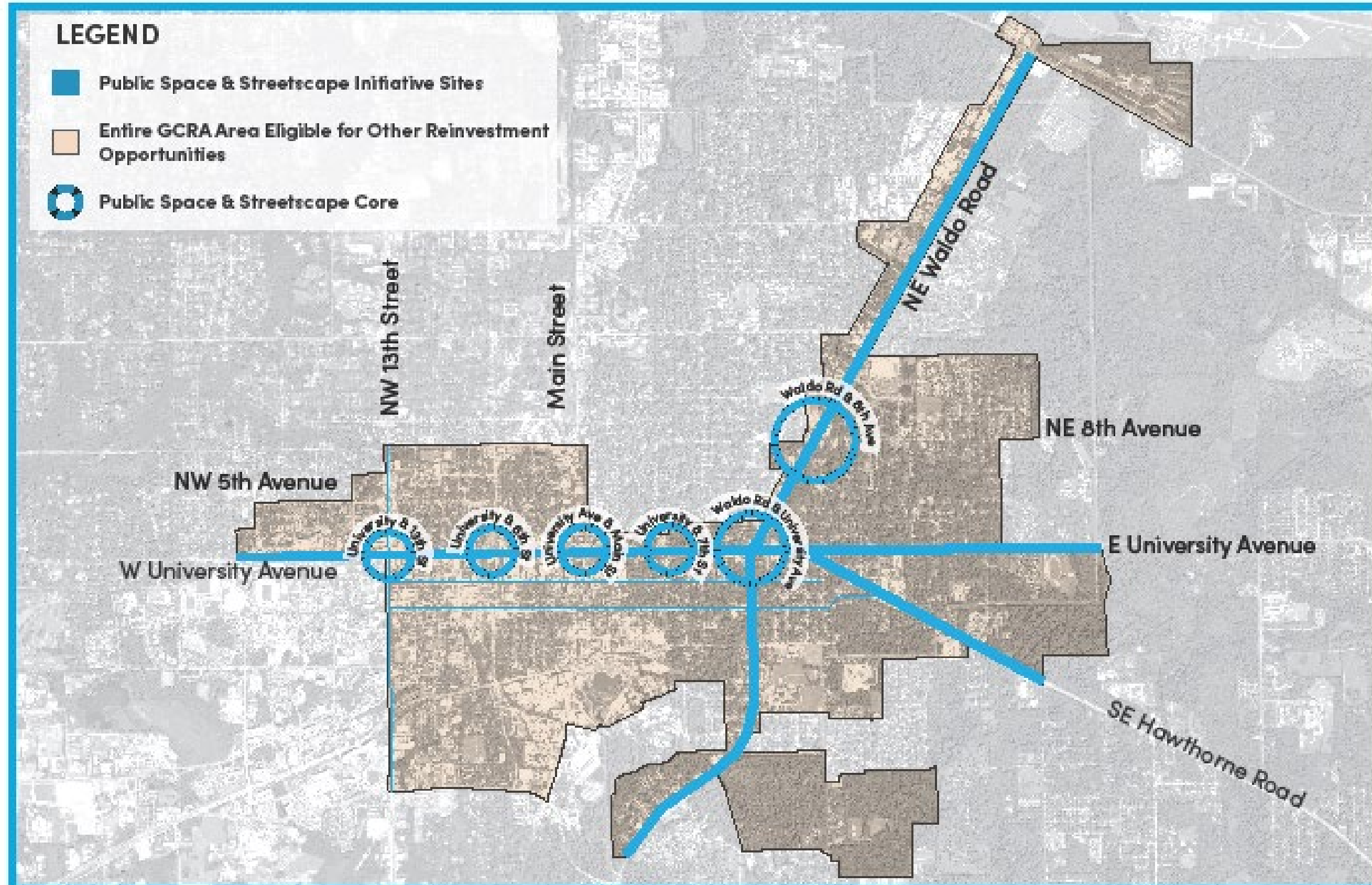
Parks & Plazas

Farm  
to  
Restaurant

ENJOY

# Public Space & Streetscape

This map shows the priority areas for public space & streetscape initiatives as determined by the community, City, consultants and GCRA.



# Reinvestment Roadmap

## Economic Development

- 8th Avenue & Waldo Road Improvements
- Cornerstone Campus
- Downtown Master Plan
- Economic Development Finance Programs
- Former Fire Station No. 1 Redevelopment
- Former RTS Site Redevelopment
- GTEC Management
- Innovation District
- Power District Redevelopment
- University Avenue & Waldo Road Mixed Use Development and Job Training Center

## Community Enhancements & Housing

- Commercial Facade Grant Program
- Community Partnership Grants
- District Wide Landscape Maintenance
- Greater Duval Neighborhood Improvements
- Eastside Food / Mobility Hub
- Heartwood Neighborhood
- Historic Heritage Trail
- Porters Neighborhood Improvements
- Model Block & Attainable Housing Strategies
- Property Acquisitions/Options
- Residential Improvement Programs

## Public Space & Streetscape

- 13th Street Corridor Improvements
- SE Hawthorne Road Corridor Improvements
- SW 2nd Avenue Corridor Improvements
- SW 4th Avenue Corridor Improvements
- University Avenue Corridor Improvements
- Waldo Road & Williston Road Corridor Improvements

# **GCRA FY 2020 Annual Report**

# 2020 Annual Report



## Summary of Activities

- Consolidated Plan adopted 03/05/20
- Transition to City Department
- Heartwood Model Home
- SW 9<sup>th</sup> St. Pedestrian Walkway
- Context Area Improvements @ AQJ
- Sale of 802 NW 5<sup>th</sup> Avenue Commercial Bldg. + Move to GTEC
- GTEC Analysis
- Completed South Main Street
- GNVCares

## Financials

- TIF + New GCRA Funds
- Local Impact

# THANK YOU



GCRA Office @ Cornerstone:

2153 SE Hawthorne Rd.

Suite 223

Gainesville, FL 32641

(352) 393-8201



@GainesvilleCRA



gainesville\_cra

[www.gainesvillecra.com](http://www.gainesvillecra.com)

