



GAINESVILLE

POLICE

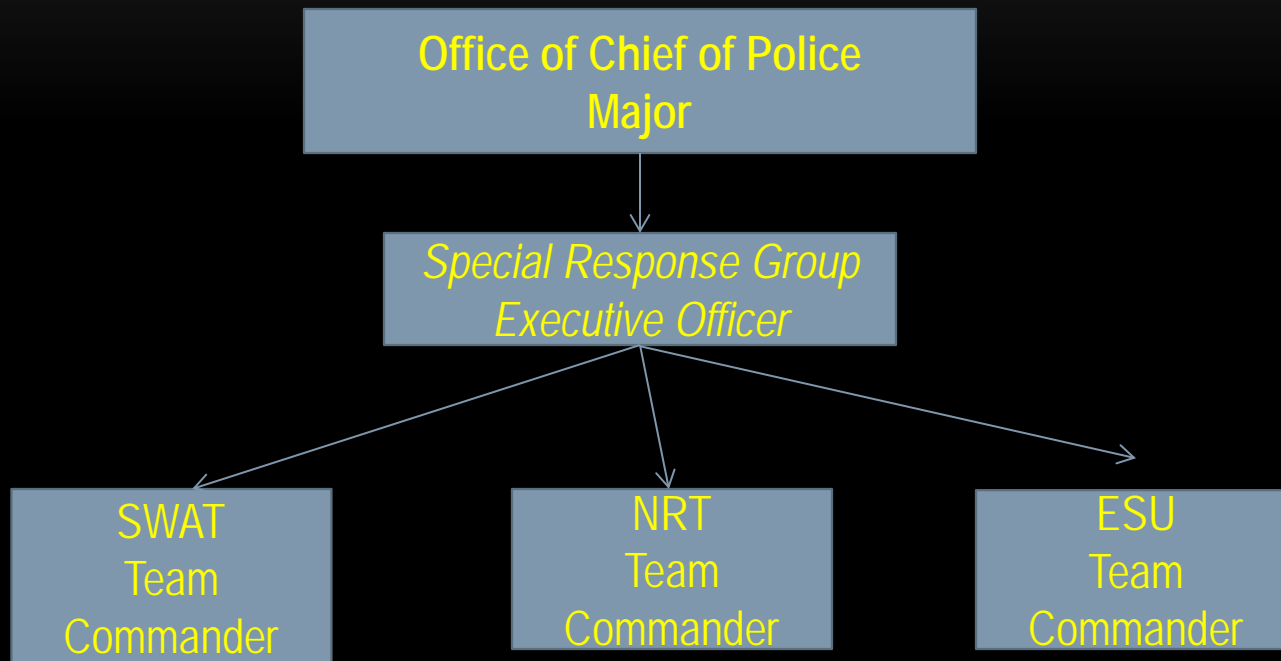
SPECIAL RESPONSE GROUP (SRG)

Special Weapons And Tactics (SWAT)

Negotiation Response Team (NRT)

Emergency Services Unit (ESU)

SPECIAL RESPONSE GROUP (SRG)



SPECIAL RESPONSE GROUP (SRG)

MISSION STATEMENT:

The primary mission of each team within the Special Response Group is to save and protect life through the use of enhanced tactics and equipment.

SPECIAL WEAPONS AND TACTICS

- The SWAT team has two equipment requests needing immediate attention:
 - SWAT needs to purchase an armored vehicle with increased threat level protection I. The armored vehicle would be utilized on both critical incidents and search warrants.
 - An armored vehicle is utilized as a rally point on critical incidents and medical transport. An armored vehicle allows for movement into dangerous incident areas and provides a safe location for citizen and officer rescue.
 - The current armored vehicle is a former bank transport vehicle that does not have armor capability to stop any bullets beyond a handgun. Due to the vehicle's age it has also become increasingly difficult to maintain.

SPECIAL WEAPONS AND TACTICS

Current SWAT vehicle
Can only stop handgun round



This image is © Alpine Armoring and is a sole property of ALPINE ARMORING INC. Any unauthorized use and/or distribution of this image is prohibited. All rights reserved.

alpineco.com



Armor windows stopping rifle rounds
Windshield of Bearcat from incident at Marion
County

NEGOTIATION RESPONSE TEAM

- The NRT members provide technical support to the SWAT team during critical incidents.
- Needed equipment at this time would be a robot capable of safely entering a structure to search and/or contact a barricade suspect. A robot would greatly enhance safety to responding police officers without forcing them to unnecessarily exposing themselves to danger.
- The estimated cost of a robot that can operate in a structure and provide audio and video capability is approximately \$8,000.

EMERGENCY SERVICES UNIT

- ESU will be a replacement specialty team for the former GPD Rifle Team (ALERT). Unit is somewhat replication of the Emergency Service Unit in NYPD.
- Due to the increased service area and responsibility, there is a growing need for GPD to be able to immediately deploy life saving & emergency use equipment without the current delays of having to return to GPD headquarters.
- The primary objective of ESU is to have a group of highly trained Patrol officers that can respond quickly to critical incidents (*medical emergencies, natural disasters, active shooter*) in order to preserve life and property.
- ESU members will be trained on various life saving equipment and trained to deal with mental health issues and citizens that are in crisis.



EMERGENCY SERVICES UNIT



- **MEDICAL EQUIPMENT NEEDS**

- **Automated External Defibrillator (AED)**: Each member will be assigned and trained on the use of an AED device.
- **TacMed Ark Kits**: Kits designed to reduce the size of the required rescue force and significantly reduce the evacuation time of seriously injured casualties. Rescue time can be greatly reduced and survivability rates can be increased.
- **Foxtrot Litter**: Device allowing for rapid removal of injured persons out of a dangerous area in order to provide medical treatment.



EMERGENCY SERVICES UNIT



- **TACTICAL EQUIPMENT NEEDS**

- **Ballistic Shields**: ESU officers will each be assigned shields to provide additional ballistic protection when critical incidents such as an armed disturbance require officers to make an exigent entry into a house or other structure.
- **Less Lethal**: A less-lethal weapon that can only fire a non-lethal large rubber round. These weapons are more accurate and can be used at a closer range than the “bean bag” rounds fired from our current issued standard 12 gauge shotgun. Use of this weapon will allow for a wider range of options and limit escalation to Deadly Force.
- **Rifles**: ESU officers will be trained on the use of rifles in order to enhance our ability to respond to incidents such as active shooters. Rifles allow for greater accuracy by officers and limit the danger to citizens thus a safer option.

EMERGENCY SERVICES UNIT

- **GENERAL EQUIPEMENT NEEDS**

- **SUV/Truck:** Due to greater quantity of equipment (size & weight) officers will be assigned a larger vehicle to both fit the additional equipment and allow for quick access and added security. Based on the nature and amount of equipment a larger vehicle is strongly suggested to secure that the issued equipment is not damaged and again is readily accessible in an emergency situation. - *Request to utilize State and Federal Forfeiture funds to cover the one time expense of the equipment and vehicles.*
- **Breaching/Entry Equipment:** Tools to allow officers to make forced entry on structures for critical incidents and citizen rescue situations.



EMERGENCY SERVICES UNIT

- TRAINING NEEDS
 - Crisis Mental Health/Negotiation/De-escalation Strategies
 - Certifications on all assigned equipment
 - Advanced emergency medical response tactics
 - Critical Incidents tactics and entry team movement
-

SRG REQUEST TO UTILIZE FEDERAL FORFEITURE FUNDS

SPECIAL REPSONSE GROUP			
Equipment	Unit Cost	Multiplier	Purchase Site/Company
15 Shields	\$ 1,800.00	\$ 27,000.00	Phalanx ICE Shield 3A/ with light
15 Entry Equipment Gear	\$ 500.00	\$ 7,500.00	Lite Patrol Breaching Kit
16 rifles	\$899.00	\$ 14,384.00	16 rifles upgrade to SWAT & ESU
Robot (NRT)		\$ 12,000.00	TBD
Armored Van for SWAT	\$ 81,000.00	\$ 81,000.00	
20 units of 40 mm Less Lethal		\$ 25,637.60	Safari-land, includes training kits, ammo
15 AED's	\$ 1,600.00	\$ 24,000.00	Medical
17 Tac Med ARKs	\$708.75	\$ 12,048.75	Medical/Rescue
20 Foxtrot Litters	\$189.00	\$ 3,780.00	Medical/Rescue
Increase Fleet Budget for Interceptors		\$60,000	
TOTAL		\$ 267,350.35	