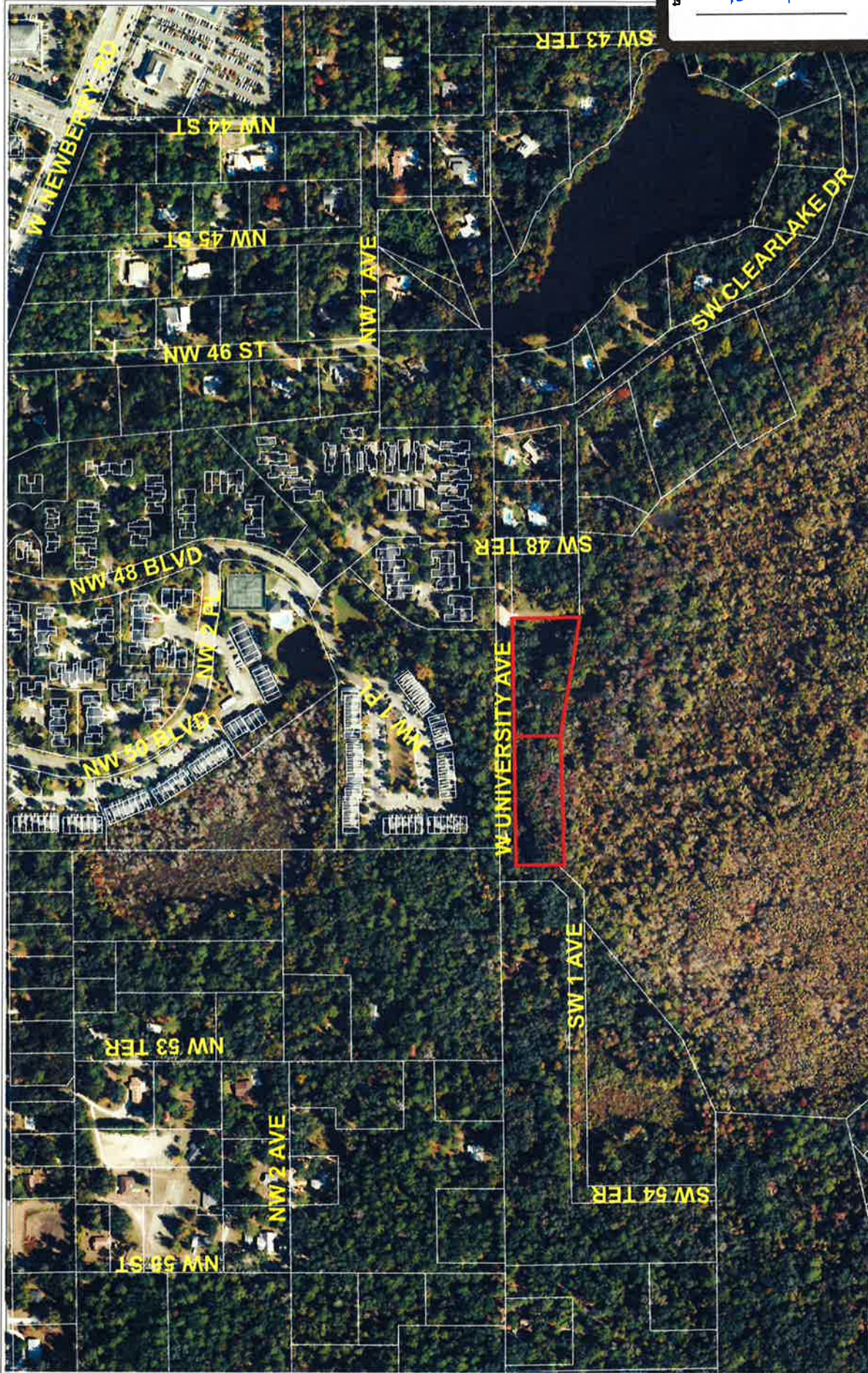



Petition PB-15-73 LUC
August 27, 2015

Appendix B Supplemental Documents



AERIAL PHOTOGRAPH

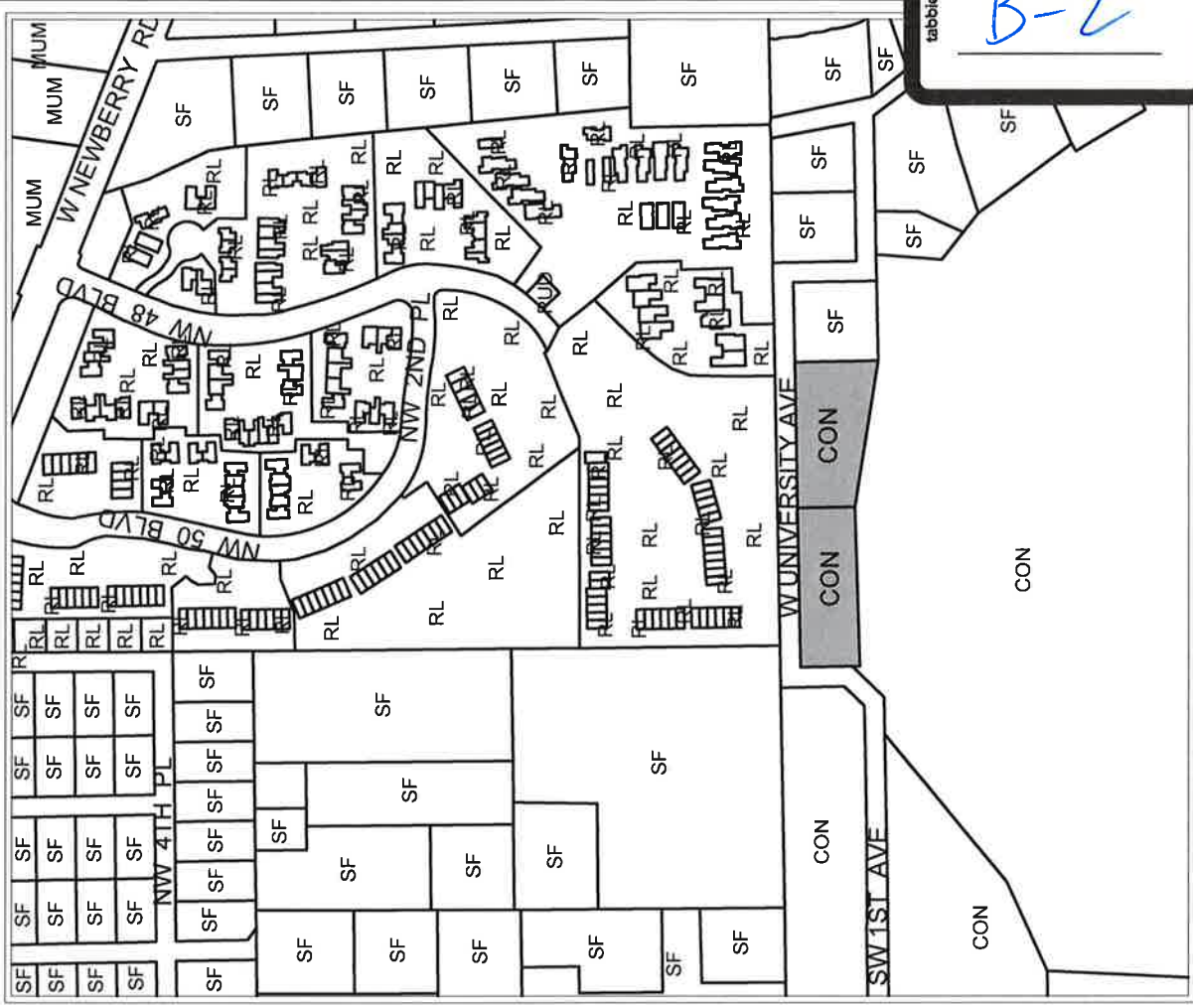
 <p>No Scale</p>	<p>Name</p> <p>City Plan Board, applicant</p>	<p>Petition Request</p> <p>Amend the City of Gainesville Future Land Use Map from Conservation to Single-Family (up to 8 units per acre)</p>	<p>Petition Number</p> <p>PB-15-73 LUC</p>
---	--	---	---

tabbles®
EXHIBIT
B-2

150305D

City of Gainesville Land Use Categories

- SF Single-Family (up to 8 units per acre)
- R-L Residential Low-Density (up to 12 units per acre)
- MU-M Mixed-Use Medium-Intensity (12-30 units per acre)
- CON Conservation



Area under petition consideration

EXISTING LAND USE

Name	Petition Request	Petition Number
City Plan Board, applicant	Amend the City of Gainesville Future Land Use Map from Conservation to Single-Family (up to 8 units per acre)	PB-15-73 LUC



City of Gainesville Land Use Categories

- SF Single-Family (up to 8 units per acre)
- R-L Residential Low-Density (up to 12 units per acre)
- MU-M Mixed-Use Medium-Intensity (12-30 units per acre)
- CON Conservation

Area
under petition
consideration

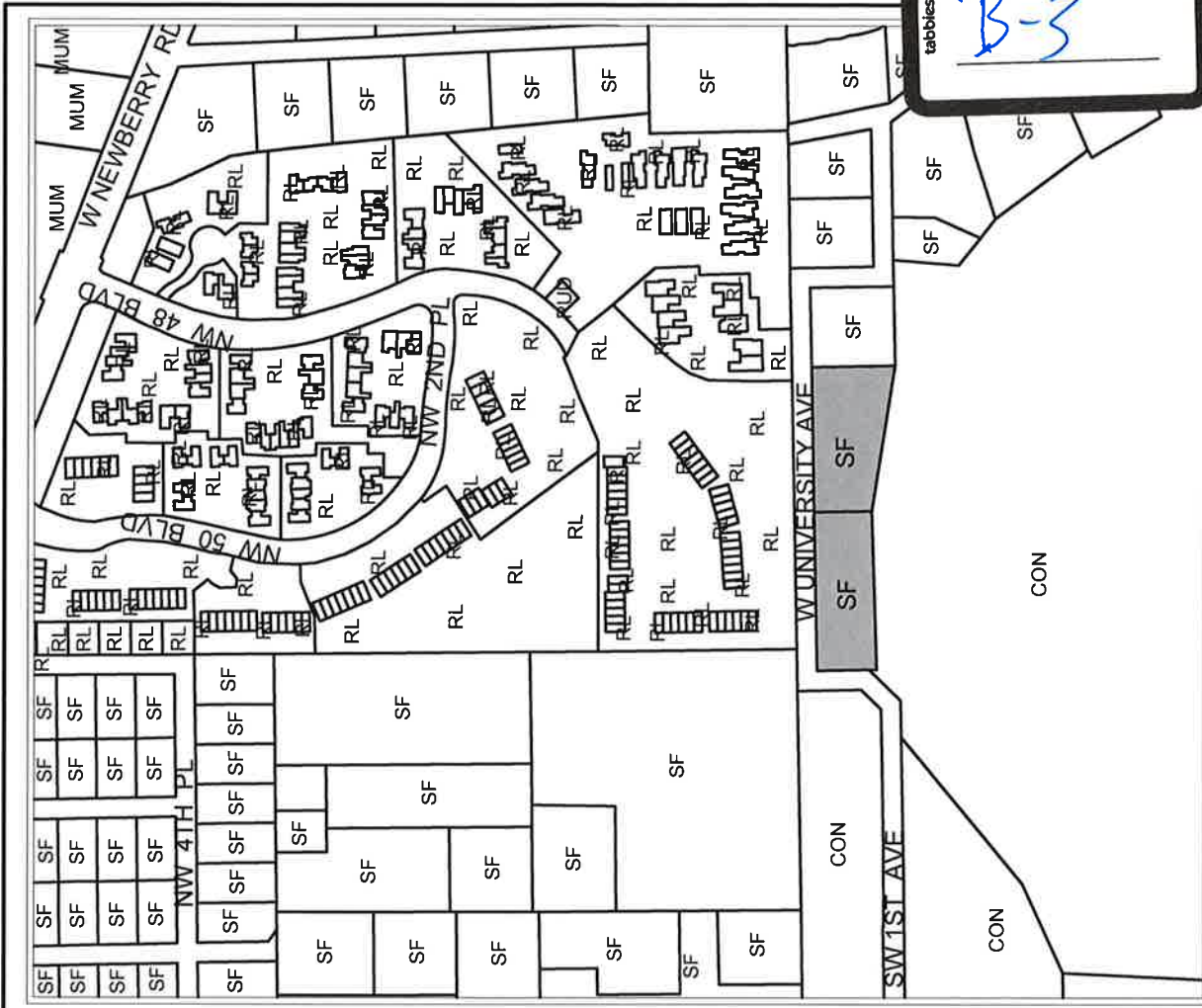


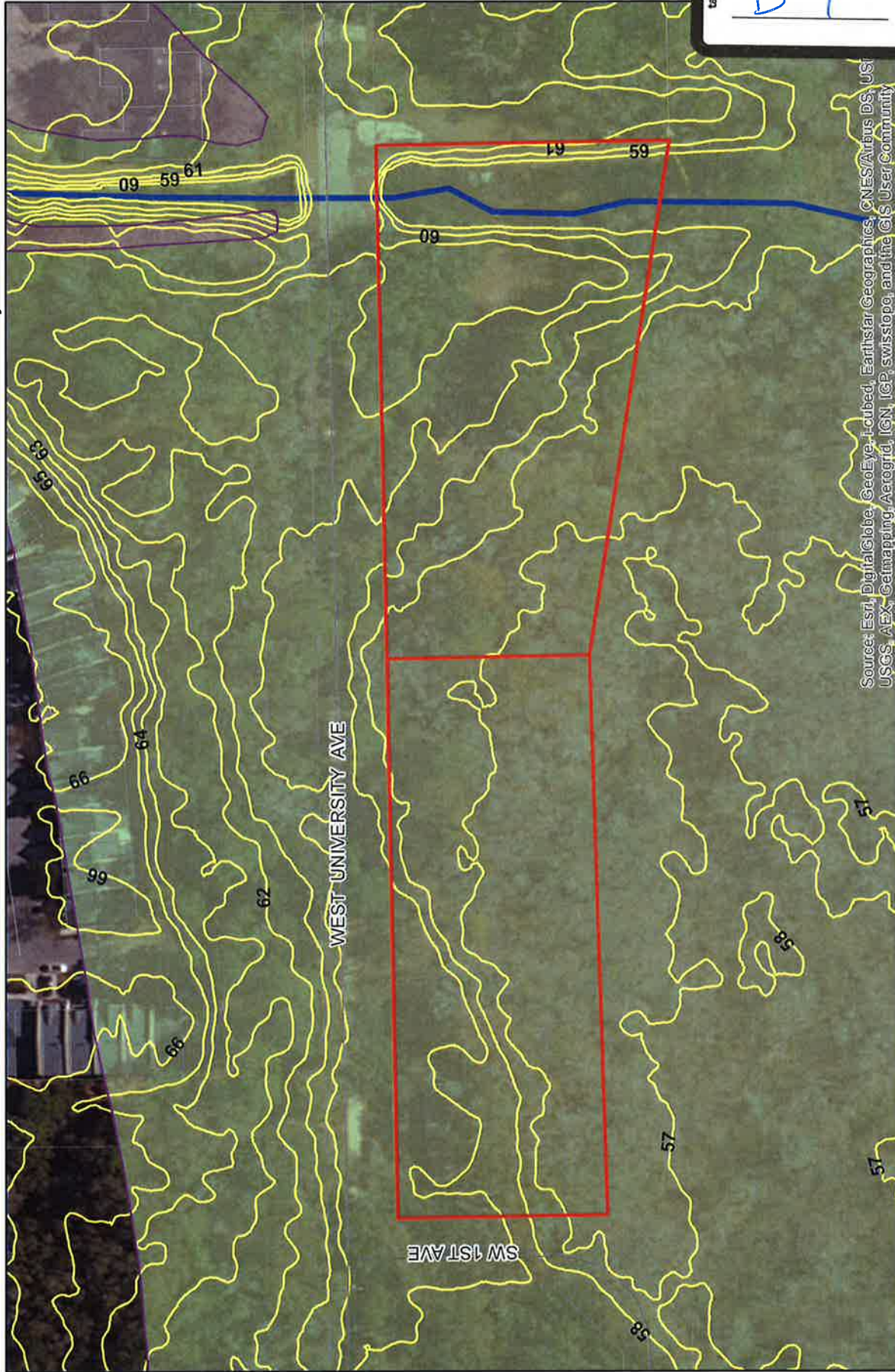
EXHIBIT
B-3
tabbies

150305D

PROPOSED LAND USE	
Name	Petition Request
City Plan Board, applicant	Amend the City of Gainesville Future Land Use Map from Conservation to Single-Family (up to 8 units per acre)
	Petition Number
	PB-15-73 LUC



Parcel ID: 06539-009-000 & 06539-008-000 □ □ 5021 & 4911 W. University Ave



Source: Esri, DigitalGlobe, GeoEye, Earthstar Geographics, CNES/Airbus DS, USDA, USGS, AeroGRID, IGN, IGP, swisstopo, and the GIS User Community

tabbles
EXHIBIT
B-4

150305D

FEMA Special Flood Hazard Area (SFHA) and Contour Data
PB-15-73 LUC and PB-15-74 ZON

1 inch = 100 feet
Contour Data: NAVD 1988 Datum

- A- Annual 1% chance- 100 year
- AE- Annual 1% chance- 100 year- Elevations known
- X- Non Risk
- X500- Low Risk, area of minimal flooding protected by Levy



This map is for informational purposes only. Do not rely on this map for accuracy of dimensions, size, or location. The City of Gainesville does not assume responsibility to update this information or for any error or omission on this map.