



0024/b
2/25/02

COMBINED COMMUNICATIONS CENTER



CALL STATISTICS FISCAL YEAR 2001

**CALLS FOR SERVICE DATA
FISCAL YEAR 2000-01**

| CALLS FOR SERVICE | | | | | | | | | | | | | |
|-------------------|-------|-------|-------|-------|------|-------|-------|-------|-------|-------|-------|-------|--------|
| | OCT | NOV | DEC | JAN | FEB | MAR | APR | MAY | JUN | JUL | AUG | SEP | TOT |
| ACFR | 2727 | 2528 | 2429 | 2813 | 2467 | 2627 | 2441 | 2402 | 2225 | 2236 | 2433 | 2308 | 29636 |
| ACSO | 9375 | 8831 | 8537 | 8967 | 8277 | 9257 | 9635 | 10106 | 9557 | 10227 | 9904 | 9564 | 112237 |
| GFR | 1345 | 1237 | 1315 | 1466 | 1238 | 1296 | 1284 | 1232 | 1113 | 1227 | 1323 | 1274 | 15350 |
| GPD | 10771 | 10260 | 10380 | 10542 | 9584 | 10494 | 10423 | 11142 | 10279 | 9895 | 10564 | 10870 | 125204 |
| WPD | 538 | 380 | 365 | 494 | 486 | 440 | 411 | 433 | 438 | 508 | 365 | 382 | 5240 |

| ADJUSTED CALLS FOR SERVICE - BILLABLE IN ACCORDANCE WITH FUNDING FORMULA | | | | | | | | | | | | | |
|--|-------|-------|-------|-------|------|-------|-------|-------|-------|-------|-------|-------|--------|
| | OCT | NOV | DEC | JAN | FEB | MAR | APR | MAY | JUN | JUL | AUG | SEP | TOT |
| ACFR | 3628 | 3468 | 3311 | 3753 | 3340 | 3599 | 3383 | 3367 | 3120 | 3121 | 3390 | 3260 | 40740 |
| ACSO | 9380 | 8839 | 8547 | 8972 | 8276 | 9258 | 9637 | 10105 | 9570 | 10231 | 9903 | 9558 | 112276 |
| GFR | 1343 | 1233 | 1310 | 1462 | 1234 | 1292 | 1281 | 1227 | 1110 | 1222 | 1313 | 1267 | 15294 |
| GPD | 10777 | 10264 | 10386 | 10551 | 9595 | 10504 | 10436 | 11153 | 10286 | 9907 | 10575 | 10885 | 125319 |
| WPD | 527 | 368 | 349 | 480 | 476 | 429 | 396 | 423 | 418 | 492 | 355 | 373 | 5086 |

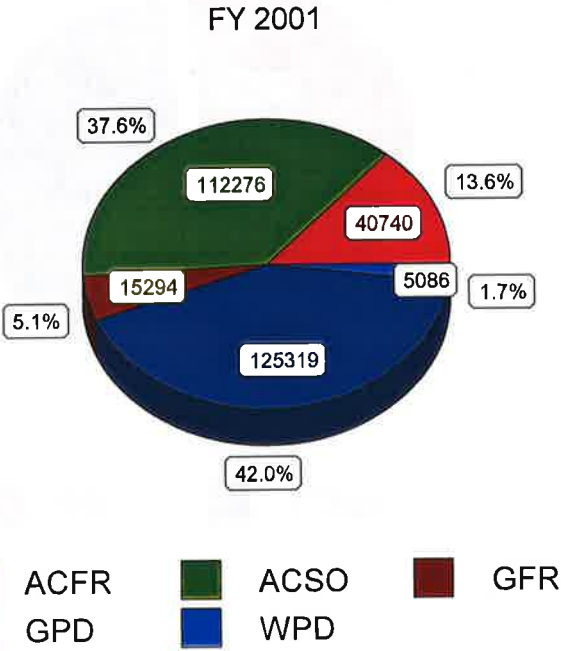
| TELEPHONE ACTIVITY | | | | | | | | | | | | | |
|--------------------|-------|-------|-------|-------|-------|-------|-------|-------|-------|-------|-------|-------|--------|
| | OCT | NOV | DEC | JAN | FEB | MAR | APR | MAY | JUN | JUL | AUG | SEP | TOT |
| 9-1-1 | 9619 | 10782 | 12475 | 12544 | 11908 | 13590 | 13765 | 13055 | 12847 | 12778 | 13054 | 12999 | 149416 |
| 7-Digit | 45474 | 36161 | 32378 | 34557 | 31889 | 35340 | 34709 | 33726 | 32583 | 32003 | 31431 | 35333 | 415584 |
| TOTAL | 55093 | 46943 | 44853 | 47101 | 43797 | 48930 | 48474 | 46781 | 45430 | 44781 | 44485 | 48332 | 565000 |

**ALACHUA COUNTY SHERIFF'S OFFICE
COMBINED COMMUNICATIONS CENTER**

**CALLS FOR SERVICE
CCC FUNDING FORMULA
AGENCY ALLOCATION**

This section contains adjusted response data for the listed agencies in accordance with the approved Calls for Service definition and the funding formula for the Combined Communications Center. Data is subject to accuracy of reports generated from the HTE Computer Aided Dispatch (CAD) System.

| | |
|-------------|--------|
| ACFR | 40740 |
| ACSO | 112276 |
| GFR | 15294 |
| GPD | 125319 |
| WPD | 5086 |



**ALACHUA COUNTY SHERIFF'S OFFICE
COMBINED COMMUNICATIONS CENTER**

FOURTH QUARTER 2000

| Calls for Service | | | | | |
|-----------------------------------|------------|------------|------------|--------------|-----------------------|
| | Oct | Nov | Dec | Total | Prev Qtr Total |
| Alachua County Fire-Rescue | 2727 | 2528 | 2429 | 7684 | N/A |
| Alachua County SO | 9375 | 8831 | 8537 | 26743 | N/A |
| Gainesville Fire-Rescue | 1345 | 1237 | 1315 | 3897 | N/A |
| Gainesville PD | 10771 | 10260 | 10380 | 31411 | N/A |
| Waldo PD | 538 | 380 | 365 | 1283 | N/A |
| TOTAL | 24756 | 23236 | 23026 | | |

| Calls for Service - Billable in Accordance with Funding Formula | | | | | |
|--|------------|------------|------------|--------------|-----------------------|
| | Oct | Nov | Dec | Total | Prev Qtr Total |
| Alachua County Fire-Rescue | 3628 | 3468 | 3311 | 10407 | N/A |
| Alachua County SO | 9380 | 8839 | 8547 | 26766 | N/A |
| Gainesville Fire-Rescue | 1343 | 1233 | 1310 | 3886 | N/A |
| Gainesville PD | 10777 | 10264 | 10386 | 31427 | N/A |
| Waldo PD | 527 | 368 | 349 | 1244 | N/A |
| TOTAL | 25655 | 24172 | 23903 | | |

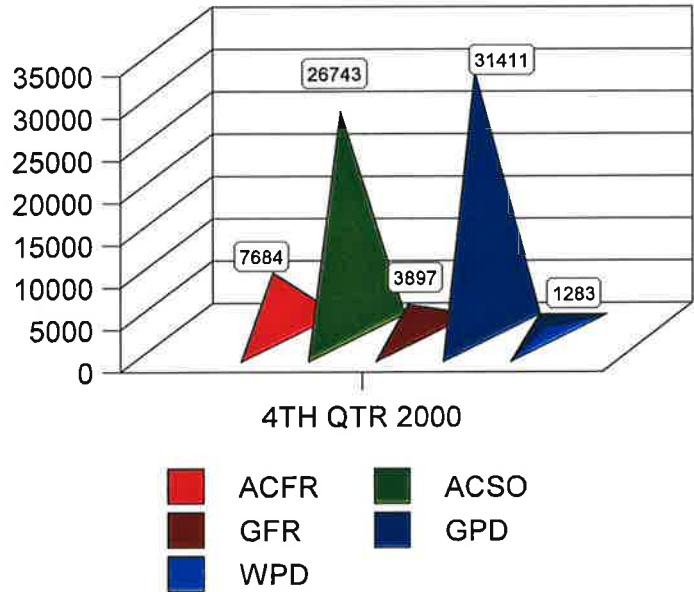
| Telephone Activity* | | | | | |
|------------------------------|------------|------------|------------|--------------|-----------------------|
| | Oct | Nov | Dec | Total | Prev Qtr Total |
| 9-1-1 Calls | 9619 | 10782 | 12475 | 32876 | N/A |
| 7-Digit Calls | 45474 | 36161 | 32378 | 114013 | N/A |
| TOTAL TELEPHONE CALLS | 55093 | 46943 | 44853 | 146889 | N/A |

**ALACHUA COUNTY SHERIFF'S OFFICE
COMBINED COMMUNICATIONS CENTER
QUARTERLY REPORT - FOURTH QUARTER 2000**

CALLS FOR SERVICE

This section contains actual response data for the listed agencies in accordance with the approved Calls for Service definition. Data is subject to accuracy of reports generated from the HTE Computer Aided Dispatch (CAD) System.

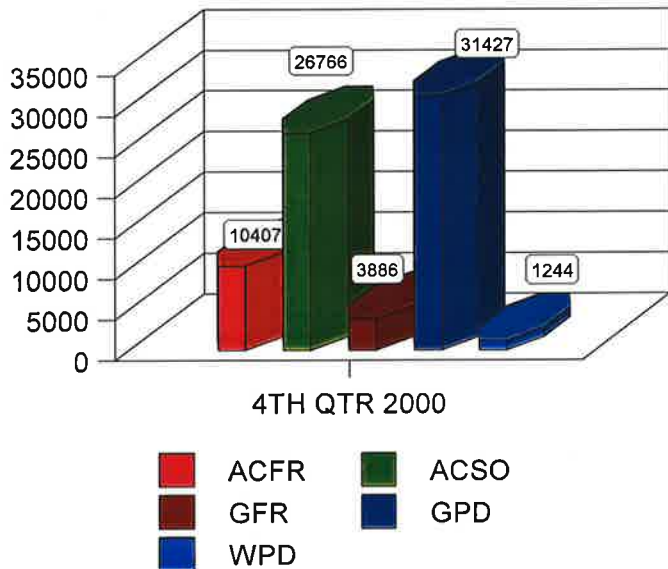
| | |
|-------------|-------|
| ACFR | 7684 |
| ACSO | 26743 |
| GFR | 3897 |
| GPD | 31411 |
| WPD | 1283 |



**CALLS FOR SERVICE
CCC FUNDING FORMULA**

This section contains adjusted response data for the listed agencies in accordance with the approved Calls for Service definition and the funding formula for the Combined Communications Center. Data is subject to accuracy of reports generated from the HTE Computer Aided Dispatch (CAD) System.

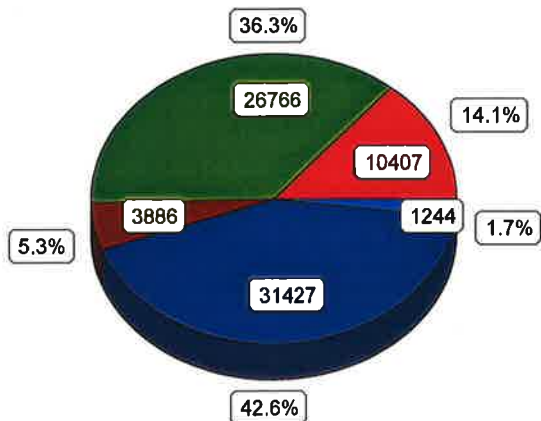
| | |
|-------------|-------|
| ACFR | 10407 |
| ACSO | 26766 |
| GFR | 3886 |
| GPD | 31427 |
| WPD | 1244 |



ALACHUA COUNTY SHERIFF'S OFFICE
 COMBINED COMMUNICATIONS CENTER
 QUARTERLY REPORT - FOURTH QUARTER 2000

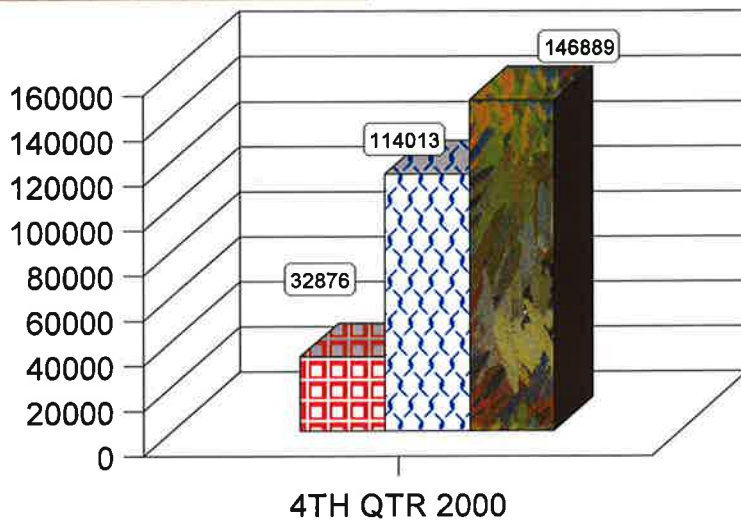
**CALLS FOR SERVICE
 CCC FUNDING FORMULA
 AGENCY ALLOCATION**

4th QTR 2000



TELEPHONE ACTIVITY

| | |
|---------------|--------|
| 9-1-1 Calls | 32876 |
| 7-Digit Calls | 114013 |
| TOTAL | 146889 |



**ALACHUA COUNTY SHERIFF'S OFFICE
COMBINED COMMUNICATIONS CENTER**

FIRST QUARTER 2001

| Calls for Service | | | | | |
|-----------------------------------|--------------|--------------|--------------|--------------|-----------------------|
| | Jan | Feb | Mar | Total | Prev Qtr Total |
| Alachua County Fire-Rescue | 2813 | 2467 | 2627 | 7907 | 7684 |
| Alachua County SO | 8967 | 8277 | 9257 | 26501 | 26743 |
| Gainesville Fire-Rescue | 1466 | 1238 | 1296 | 4000 | 3897 |
| Gainesville PD | 10542 | 9584 | 10494 | 30620 | 31411 |
| Waldo PD | 494 | 486 | 440 | 1420 | 1283 |
| TOTAL | 24282 | 22052 | 24114 | | |

| Calls for Service - Billable in Accordance with Funding Formula | | | | | |
|--|--------------|--------------|--------------|--------------|-----------------------|
| | Jan | Feb | Mar | Total | Prev Qtr Total |
| Alachua County Fire-Rescue | 3753 | 3340 | 3599 | 10692 | 10407 |
| Alachua County SO | 8972 | 8276 | 9258 | 26506 | 26766 |
| Gainesville Fire-Rescue | 1462 | 1234 | 1292 | 3988 | 3886 |
| Gainesville PD | 10551 | 9595 | 10504 | 30650 | 31427 |
| Waldo PD | 480 | 476 | 429 | 1385 | 1244 |
| TOTAL | 25218 | 22921 | 25082 | | |

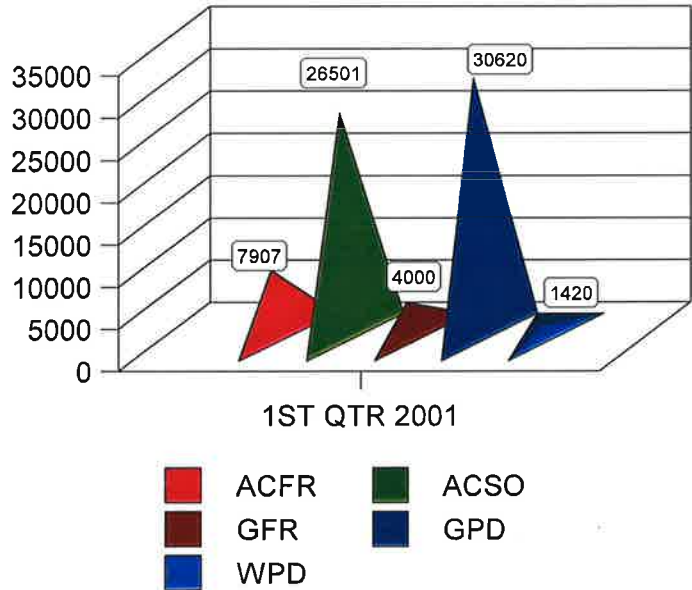
| Telephone Activity | | | | | |
|------------------------------|--------------|--------------|--------------|---------------|-----------------------|
| | Jan | Feb | Mar | Total | Prev Qtr Total |
| 9-1-1 Calls | 12544 | 11908 | 13590 | 38042 | 32876 |
| 7-Digit Calls | 34557 | 31889 | 35340 | 101786 | 114013 |
| TOTAL TELEPHONE CALLS | 47101 | 43797 | 48930 | 139828 | 146889 |

**ALACHUA COUNTY SHERIFF'S OFFICE
COMBINED COMMUNICATIONS CENTER
QUARTERLY REPORT - FIRST QUARTER 2001**

CALLS FOR SERVICE

This section contains actual response data for the listed agencies in accordance with the approved Calls for Service definition. Data is subject to accuracy of reports generated from the HTE Computer Aided Dispatch (CAD) System.

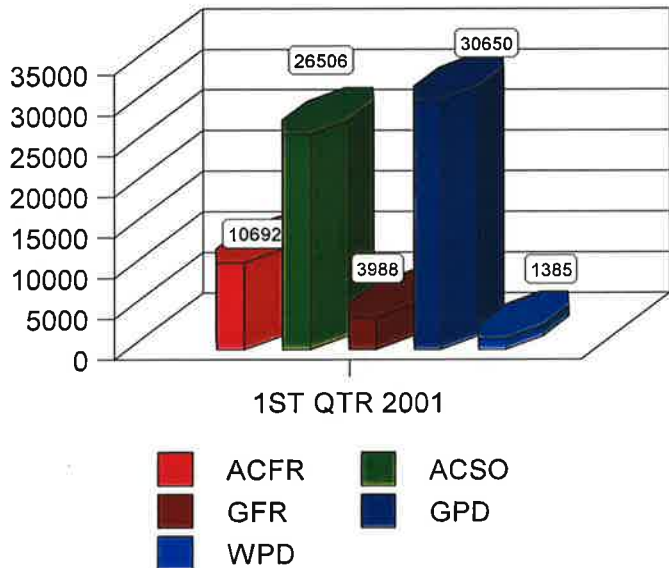
| | |
|-------------|-------|
| ACFR | 7907 |
| ACSO | 26501 |
| GFR | 4000 |
| GPD | 30620 |
| WPD | 1420 |



**CALLS FOR SERVICE
CCC FUNDING FORMULA**

This section contains adjusted response data for the listed agencies in accordance with the approved Calls for Service definition and the funding formula for the Combined Communications Center. Data is subject to accuracy of reports generated from the HTE Computer Aided Dispatch (CAD) System.

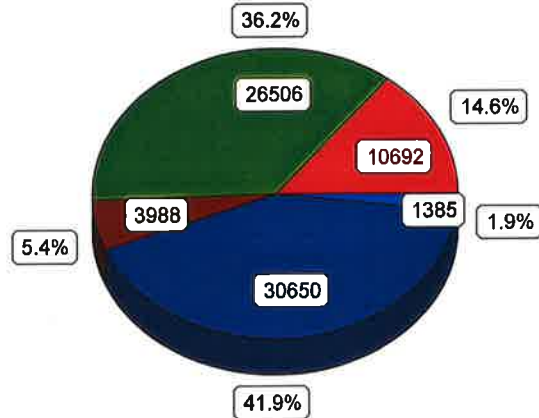
| | |
|-------------|-------|
| ACFR | 10692 |
| ACSO | 26506 |
| GFR | 3988 |
| GPD | 30650 |
| WPD | 1385 |



ALACHUA COUNTY SHERIFF'S OFFICE
 COMBINED COMMUNICATIONS CENTER
 QUARTERLY REPORT - FIRST QUARTER 2001

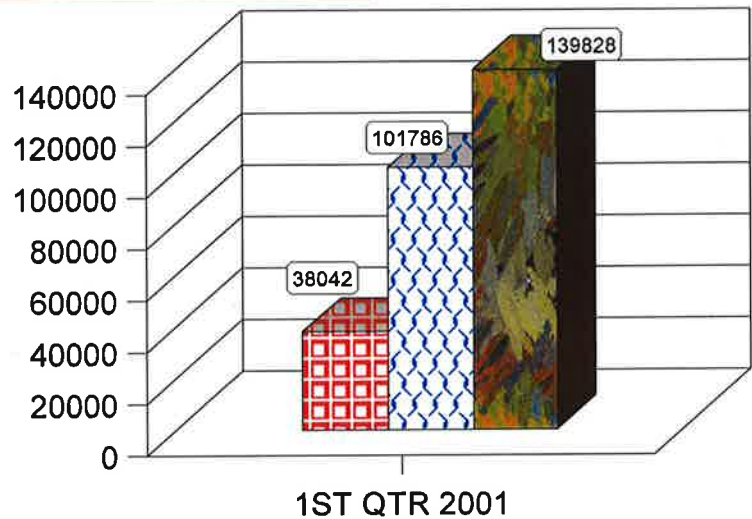
**CALLS FOR SERVICE
 CCC FUNDING FORMULA
 AGENCY ALLOCATION**

1ST QTR 2001



TELEPHONE ACTIVITY

| | |
|---------------|---------------|
| 9-1-1 Calls | 38042 |
| 7-Digit Calls | 101786 |
| TOTAL | 139828 |



**ALACHUA COUNTY SHERIFF'S OFFICE
COMBINED COMMUNICATIONS CENTER**

SECOND QUARTER 2001

| Calls for Service | | | | | |
|-----------------------------------|--------------|------------|-------------|--------------|-----------------------|
| | April | May | June | Total | Prev Qtr Total |
| Alachua County Fire-Rescue | 2441 | 2402 | 2225 | 7068 | 7907 |
| Alachua County SO | 9635 | 10106 | 9557 | 29298 | 26501 |
| Gainesville Fire-Rescue | 1284 | 1232 | 1113 | 3629 | 4000 |
| Gainesville PD | 10423 | 11142 | 10279 | 31844 | 30620 |
| Waldo PD | 411 | 433 | 438 | 1282 | 1420 |
| TOTAL | 24194 | 25315 | 23612 | | |

| Calls for Service - Billable in Accordance with Funding Formula | | | | | |
|--|--------------|------------|-------------|--------------|-----------------------|
| | April | May | June | Total | Prev Qtr Total |
| Alachua County Fire-Rescue | 3383 | 3367 | 3120 | 9870 | 10692 |
| Alachua County SO | 9637 | 10105 | 9570 | 29312 | 26506 |
| Gainesville Fire-Rescue | 1281 | 1227 | 1110 | 3618 | 3988 |
| Gainesville PD | 10436 | 11153 | 10286 | 31875 | 30650 |
| Waldo PD | 396 | 423 | 418 | 1237 | 1385 |
| TOTAL | 25133 | 26275 | 24504 | | |

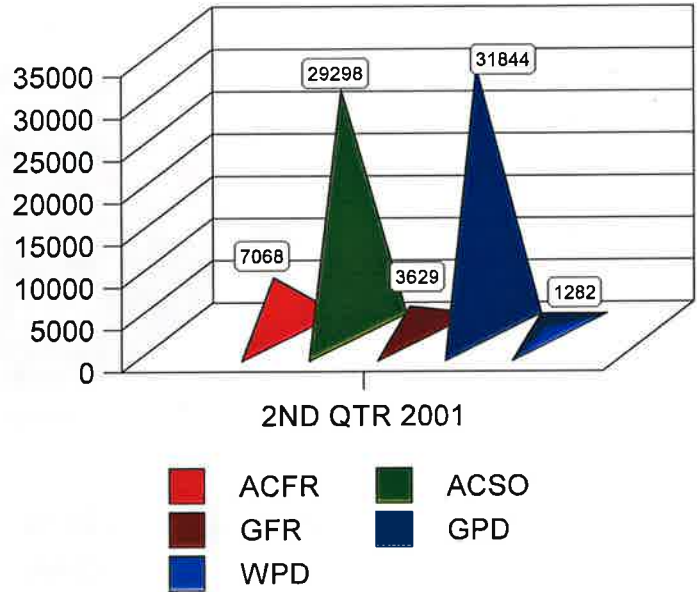
| Telephone Activity | | | | | |
|------------------------------|--------------|------------|-------------|--------------|-----------------------|
| | April | May | June | Total | Prev Qtr Total |
| 9-1-1 Calls | 13765 | 13055 | 12847 | 39667 | 38042 |
| 7-Digit Calls | 34709 | 33726 | 32583 | 101018 | 101786 |
| TOTAL TELEPHONE CALLS | 48474 | 46781 | 45430 | 140685 | 139828 |

**ALACHUA COUNTY SHERIFF'S OFFICE
COMBINED COMMUNICATIONS CENTER
QUARTERLY REPORT - SECOND QUARTER 2001**

CALLS FOR SERVICE

This section contains actual response data for the listed agencies in accordance with the approved Calls for Service definition. Data is subject to accuracy of reports generated from the HTE Computer Aided Dispatch (CAD) System.

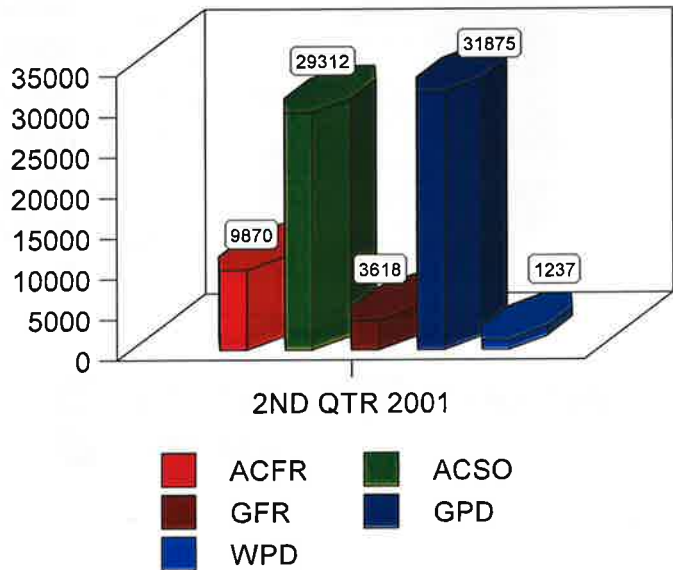
| | |
|-------------|-------|
| ACFR | 7068 |
| ACSO | 29298 |
| GFR | 3629 |
| GPD | 31844 |
| WPD | 1282 |



**CALLS FOR SERVICE
CCC FUNDING FORMULA**

This section contains adjusted response data for the listed agencies in accordance with the approved Calls for Service definition and the funding formula for the Combined Communications Center. Data is subject to accuracy of reports generated from the HTE Computer Aided Dispatch (CAD) System.

| | |
|-------------|-------|
| ACFR | 9870 |
| ACSO | 29312 |
| GFR | 3618 |
| GPD | 31875 |
| WPD | 1237 |



**ALACHUA COUNTY SHERIFF'S OFFICE
COMBINED COMMUNICATIONS CENTER**

THIRD QUARTER 2001

| Calls for Service | | | | | |
|-----------------------------------|--------------|--------------|--------------|--------------|-----------------------|
| | July | Aug | Sept | Total | Prev Qtr Total |
| Alachua County Fire-Rescue | 2236 | 2433 | 2308 | 6977 | 7068 |
| Alachua County SO | 10227 | 9904 | 9564 | 29695 | 29298 |
| Gainesville Fire-Rescue | 1227 | 1323 | 1274 | 3824 | 3629 |
| Gainesville PD | 9895 | 10564 | 10870 | 31329 | 31844 |
| Waldo PD | 508 | 365 | 382 | 1255 | 1282 |
| TOTAL | 24093 | 24589 | 24398 | | |

| Calls for Service - Billable in Accordance with Funding Formula | | | | | |
|--|--------------|--------------|--------------|--------------|-----------------------|
| | July | Aug | Sept | Total | Prev Qtr Total |
| Alachua County Fire-Rescue | 3121 | 3390 | 3260 | 9771 | 9870 |
| Alachua County SO | 10231 | 9903 | 9558 | 29692 | 29312 |
| Gainesville Fire-Rescue | 1222 | 1313 | 1267 | 3802 | 3618 |
| Gainesville PD | 9907 | 10575 | 10885 | 31367 | 31875 |
| Waldo PD | 492 | 355 | 373 | 1220 | 1237 |
| TOTAL | 24973 | 25536 | 25343 | | |

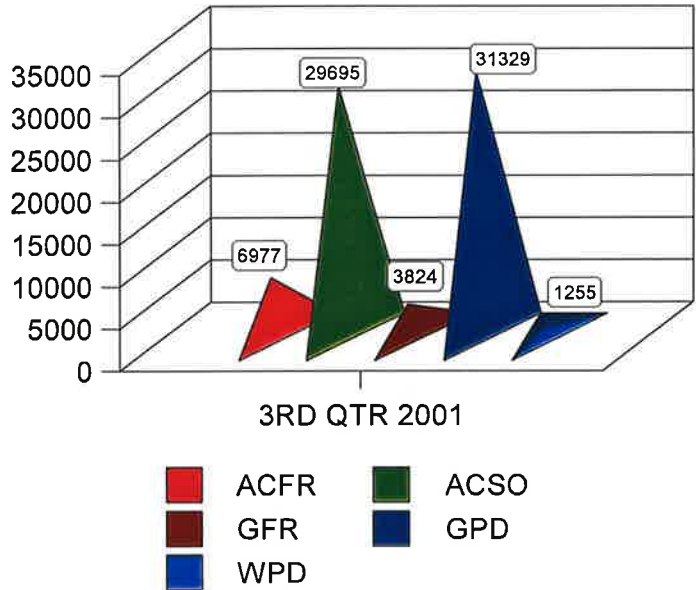
| Telephone Activity | | | | | |
|------------------------------|--------------|--------------|--------------|---------------|-----------------------|
| | July | Aug | Sept | Total | Prev Qtr Total |
| 9-1-1 Calls | 12778 | 13054 | 12999 | 38831 | 39667 |
| 7-Digit Calls | 32003 | 31431 | 35333 | 98767 | 101018 |
| TOTAL TELEPHONE CALLS | 44781 | 44485 | 48332 | 137598 | 140685 |

**ALACHUA COUNTY SHERIFF'S OFFICE
COMBINED COMMUNICATIONS CENTER
QUARTERLY REPORT - THIRD QUARTER 2001**

CALLS FOR SERVICE

This section contains actual response data for the listed agencies in accordance with the approved Calls for Service definition. Data is subject to accuracy of reports generated from the HTE Computer Aided Dispatch (CAD) System.

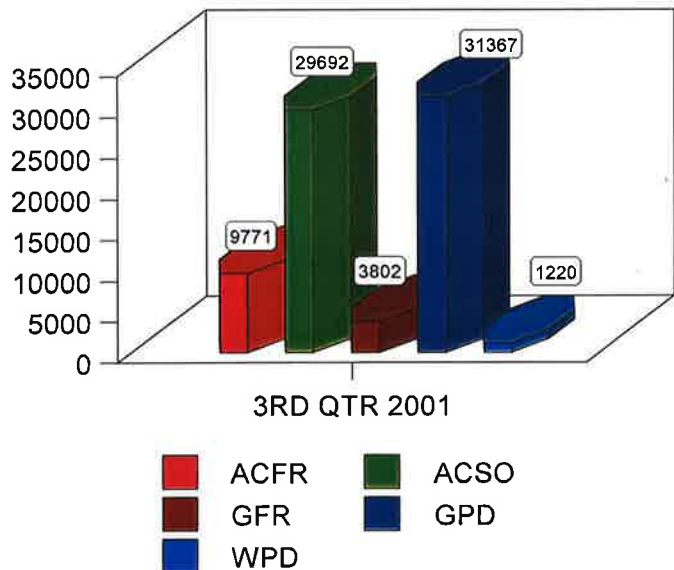
| | |
|-------------|-------|
| ACFR | 6977 |
| ACSO | 29695 |
| GFR | 3824 |
| GPD | 31329 |
| WPD | 1255 |



**CALLS FOR SERVICE
CCC FUNDING FORMULA**

This section contains adjusted response data for the listed agencies in accordance with the approved Calls for Service definition and the funding formula for the Combined Communications Center. Data is subject to accuracy of reports generated from the HTE Computer Aided Dispatch (CAD) System.

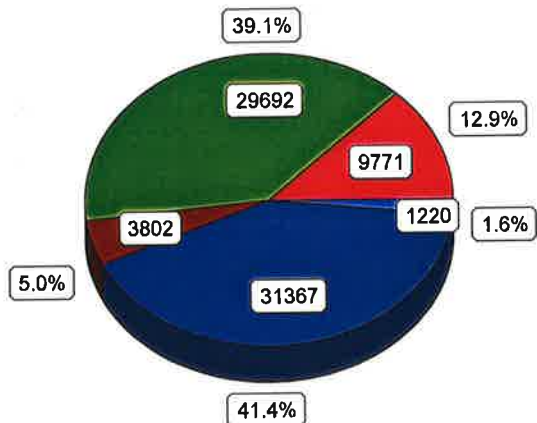
| | |
|-------------|-------|
| ACFR | 9771 |
| ACSO | 29692 |
| GFR | 3802 |
| GPD | 31367 |
| WPD | 1220 |



ALACHUA COUNTY SHERIFF'S OFFICE
 COMBINED COMMUNICATIONS CENTER
 QUARTERLY REPORT - THIRD QUARTER 2001

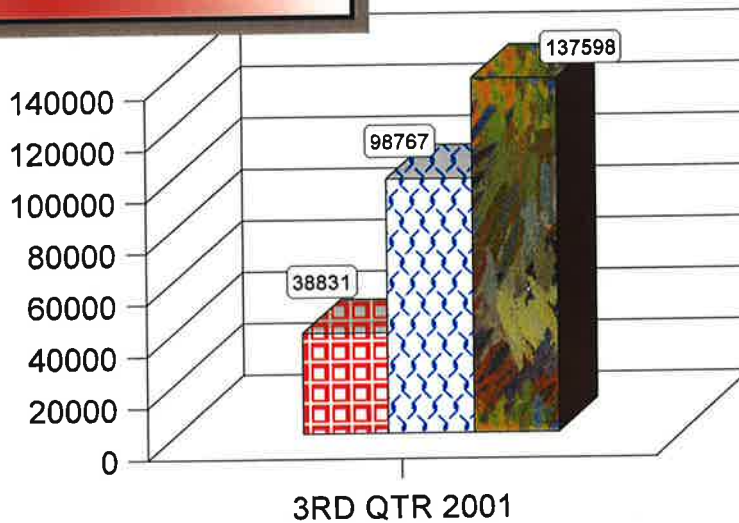
**CALLS FOR SERVICE
 CCC FUNDING FORMULA
 AGENCY ALLOCATION**

3RD QTR 2001



TELEPHONE ACTIVITY

| | |
|---------------|---------------|
| 9-1-1 Calls | 38831 |
| 7-Digit Calls | 98767 |
| TOTAL | 137598 |



**ALACHUA COUNTY SHERIFF'S OFFICE
COMBINED COMMUNICATIONS CENTER**

FOURTH QUARTER 2001

| Calls for Service | | | | | |
|-----------------------------------|------------|------------|------------|--------------|-----------------------|
| | Oct | Nov | Dec | Total | Prev Qtr Total |
| Alachua County Fire-Rescue | 2219 | 2170 | 2037 | 6426 | 6977 |
| Alachua County SO | 9969 | 10082 | 9147 | 29198 | 29695 |
| Gainesville Fire-Rescue | 1309 | 1201 | 1113 | 3623 | 3824 |
| Gainesville PD | 11188 | 10777 | 10389 | 32354 | 31329 |
| Waldo PD | 378 | 397 | 432 | 1207 | 1255 |
| TOTAL | 25063 | 24627 | 23118 | | |

| Calls for Service - Billable in Accordance with Funding Formula | | | | | |
|--|------------|------------|------------|--------------|-----------------------|
| | Oct | Nov | Dec | Total | Prev Qtr Total |
| Alachua County Fire-Rescue | 3091 | 3043 | 2852 | 8986 | 9771 |
| Alachua County SO | 9973 | 10087 | 9154 | 29214 | 29692 |
| Gainesville Fire-Rescue | 1301 | 1189 | 1107 | 3597 | 3802 |
| Gainesville PD | 11207 | 10782 | 10397 | 32386 | 31367 |
| Waldo PD | 354 | 387 | 417 | 1158 | 1220 |
| TOTAL | 25926 | 25488 | 23927 | | |

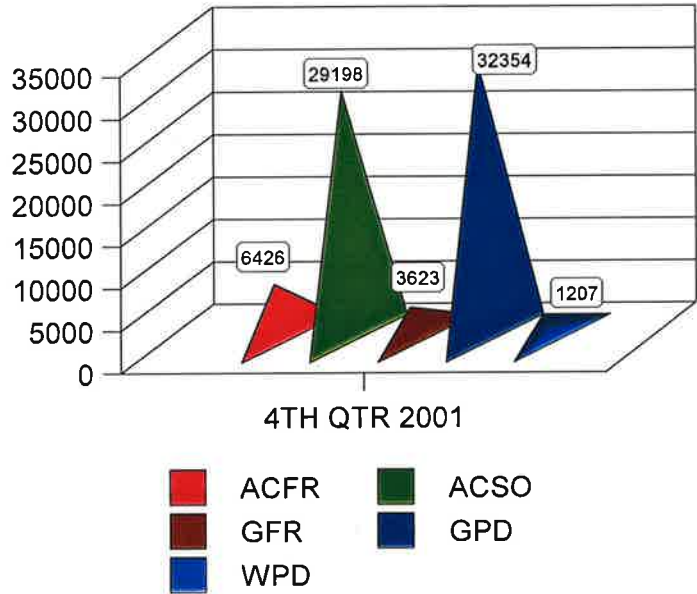
| Telephone Activity | | | | | |
|------------------------------|------------|------------|------------|--------------|-----------------------|
| | Oct | Nov | Dec | Total | Prev Qtr Total |
| 9-1-1 Calls | 12445 | 12737 | 11004 | 36186 | 38831 |
| 7-Digit Calls | 35352 | 34169 | 29466 | 98987 | 98767 |
| TOTAL TELEPHONE CALLS | 47797 | 46906 | 40470 | 135173 | 137598 |

**ALACHUA COUNTY SHERIFF'S OFFICE
COMBINED COMMUNICATIONS CENTER
QUARTERLY REPORT - FOURTH QUARTER 2001**

CALLS FOR SERVICE

This section contains actual response data for the listed agencies in accordance with the approved Calls for Service definition. Data is subject to accuracy of reports generated from the HTE Computer Aided Dispatch (CAD) System.

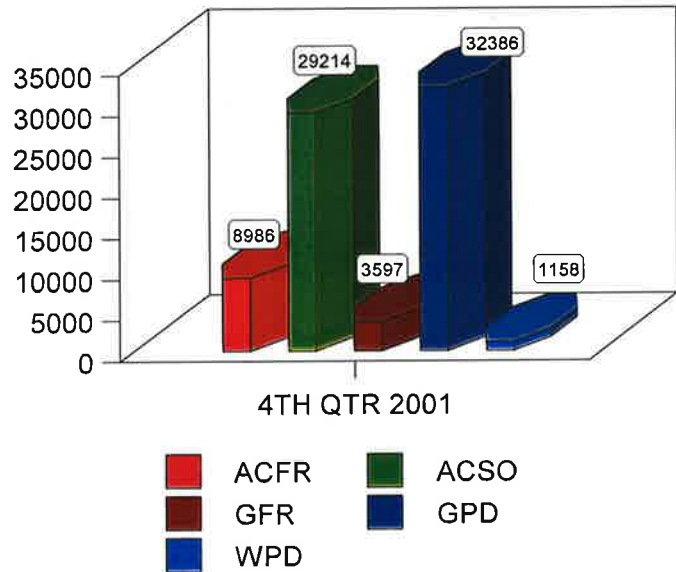
| | |
|-------------|-------|
| ACFR | 6426 |
| ACSO | 29198 |
| GFR | 3623 |
| GPD | 32354 |
| WPD | 1207 |



**CALLS FOR SERVICE
CCC FUNDING FORMULA**

This section contains adjusted response data for the listed agencies in accordance with the approved Calls for Service definition and the funding formula for the Combined Communications Center. Data is subject to accuracy of reports generated from the HTE Computer Aided Dispatch (CAD) System.

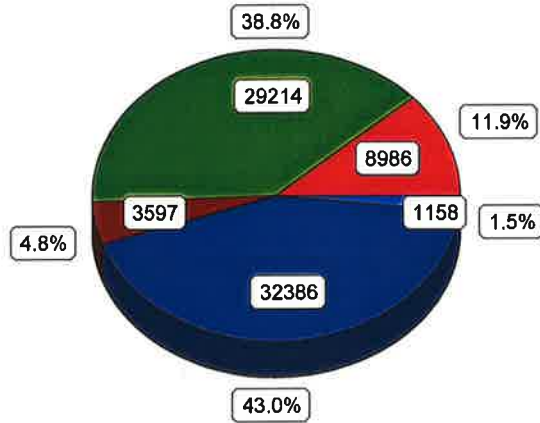
| | |
|-------------|-------|
| ACFR | 8986 |
| ACSO | 29214 |
| GFR | 3597 |
| GPD | 32386 |
| WPD | 1158 |



ALACHUA COUNTY SHERIFF'S OFFICE
 COMBINED COMMUNICATIONS CENTER
 QUARTERLY REPORT - FOURTH QUARTER 2001

**CALLS FOR SERVICE
 CCC FUNDING FORMULA
 AGENCY ALLOCATION**

4TH QTR 2001



TELEPHONE ACTIVITY

| | |
|---------------|---------------|
| 9-1-1 Calls | 36186 |
| 7-Digit Calls | 98987 |
| TOTAL | 135173 |

