

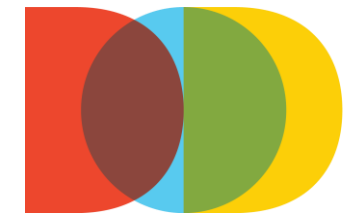
160482D

Land use amendment PB-16-141 LUC

City Commission
March 2, 2017

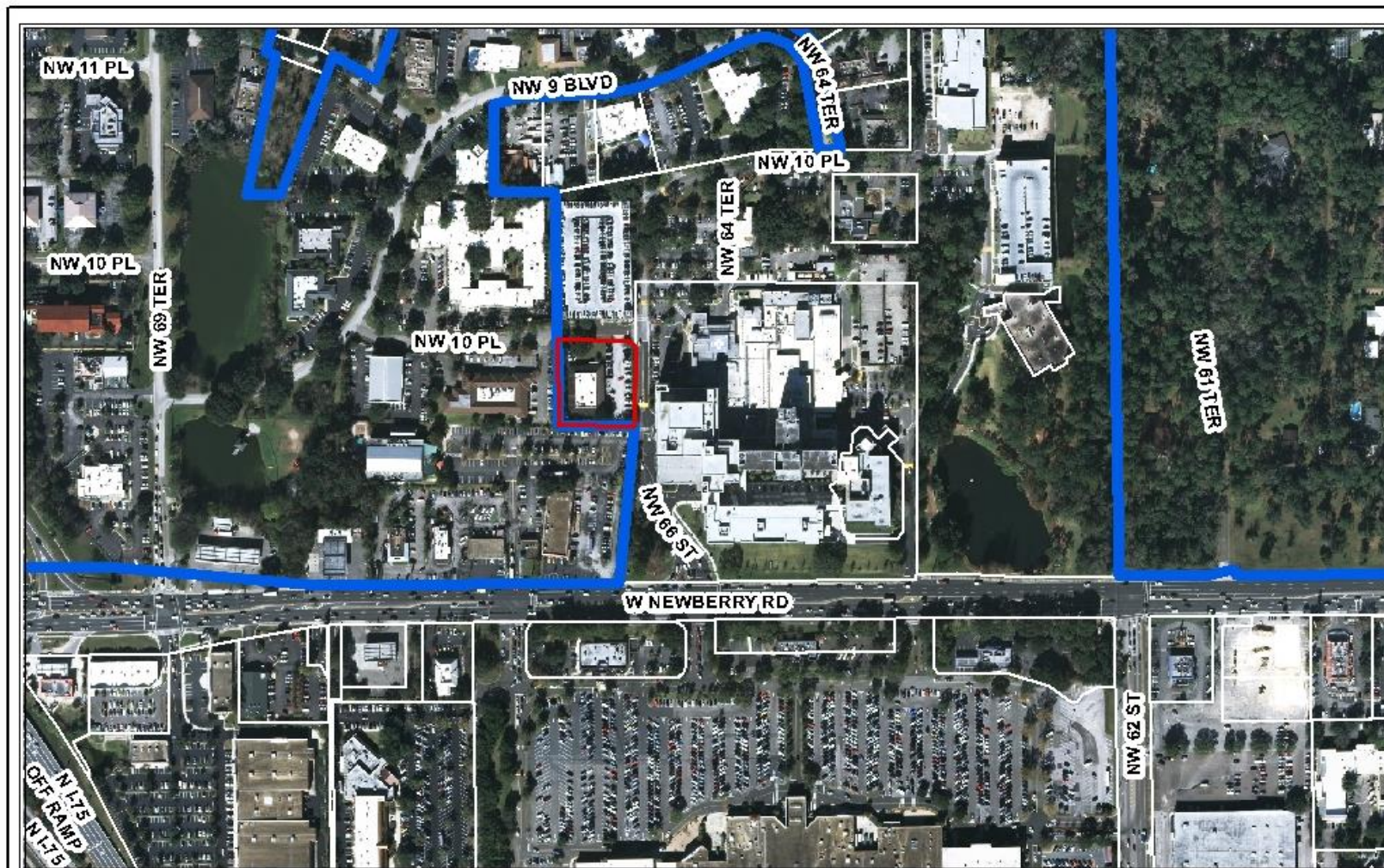
Legistar No. 160482

Andrew Persons



DEPT
OF
DOING

Petition Overview



AERIAL PHOTOGRAPH



	Name	Petition Request	Petition Number
	City of Gainesville, applicant	Amend the City of Gainesville Future Land Use map from Alachua County Office/Medical to City of Gainesville Office (O)	PB-16-141 LUC

160482D

Subject Property



Subject Property

	Existing	Proposed
Land Use (0.91 acres)	Alachua County: Office/Medical	City of Gainesville: Office

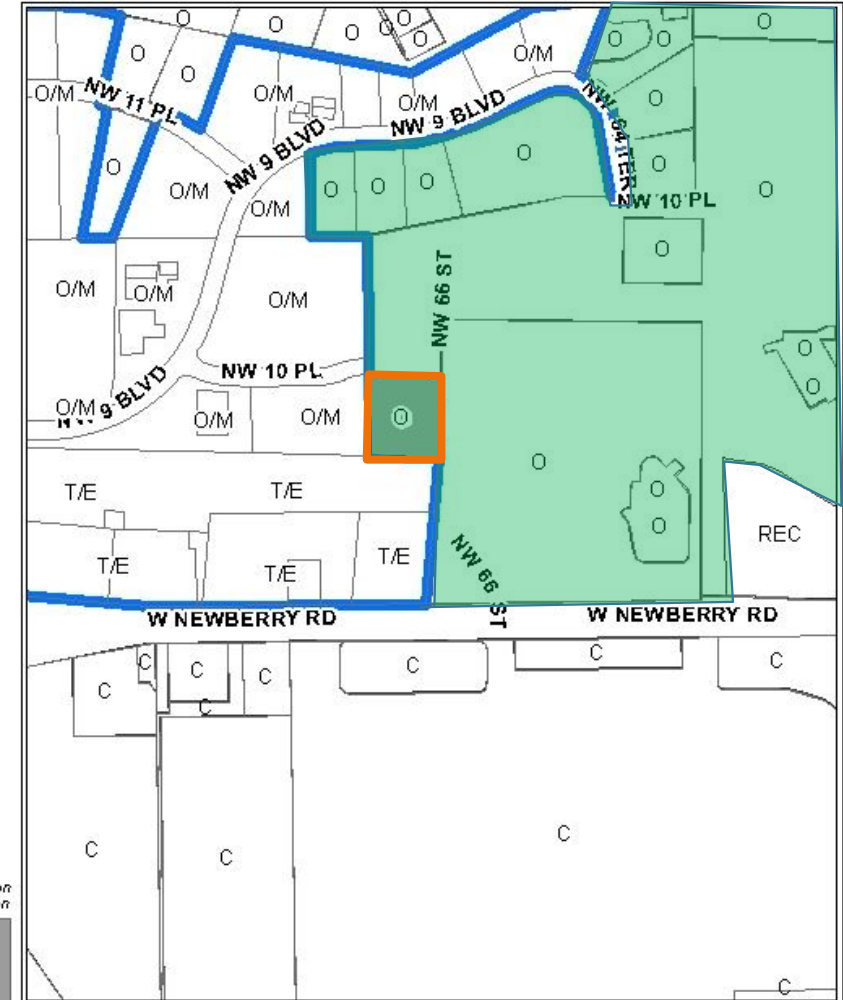
Subject Property

City of Gainesville Land Use Categories

- O Office
- C Commercial
- REC Recreation

Alachua County Land Use Categories

- O/M Office/Medical
- T/E Tourist/Entertainment



PROPOSED LAND USE

City Limits

Area under petition on side ration



Name	Petition Request	Petition Number
City of Gainesville, applicant	Amend the City of Gainesville Future Land Use map from Alachua County Office/Medical to City of Gainesville Office (O)	PB-16-141 LUC

Subject Property



160482D

East:
NFRMC



160482D

North:
NFRMC garage



West: Medical office



160482D

West Newberry Road



Consistency

- Annexed: September 9, 2016
- Office land use consistent with:
 - ✓ Comprehensive Plan
 - ✓ Surrounding medical uses
 - ✓ Existing Alachua County land uses
 - ✓ Discouragement of urban sprawl criteria in Florida Statutes

Recommendation

Staff to City Commission

- Approve Petition & Ordinance 160482