

--000114

**RESOLUTION NO. \_\_\_\_\_**

**PASSED \_\_\_\_\_**

**A Resolution approving the final replat of "Lot 3 of Northwest Industrial Park Unit No. 3", located in the vicinity of N.W. 18<sup>th</sup> Drive and N.W. 65th Place, Gainesville, Florida; authorizing the Mayor and Clerk of the Commission to execute a Tri-Party Agreement; and providing an immediate effective date.**

**WHEREAS**, the Development Review Board approved the design plat of "Lot 3 of Northwest Industrial Park Unit No. 3" on August 12, 1999, and

**WHEREAS**, the owner of the plat has submitted a final replat which substantially conforms to the design plat as approved by the City Commission on September 27, 1999 and the conditional final replat as approved by the City Commission on May 22, 2000 and which incorporates all modifications and revisions specified in such approval; and

**WHEREAS**, the owner of the proposed subdivision has requested the City Commission to accept and approve the final replat as provided in Chapter 30 of the Code of Ordinances of the City of Gainesville, Florida; and

**WHEREAS**, the City Commission finds that the final replat described herein is consistent with the City of Gainesville 1991-2001 Comprehensive Plan.

**NOW, THEREFORE, BE IT RESOLVED BY THE CITY COMMISSION OF THE CITY OF GAINESVILLE, FLORIDA;**

**Section 1.** The final replat of "Lot 3 of N.W. Industrial Park Unit No. 3" is accepted and approved by the City Commission on the following described property lying in the City of Gainesville, Alachua County, Florida:

The North One Hundred Ten (110) feet of Lot Three (3), NORTHWEST INDUSTRIAL PARK UNIT NO. 3, as per plat thereof recorded in Plat Book "L", Page 31, of the Public Records of Alachua County, Florida.

**Section 2.** The Mayor and Clerk of the Commission are authorized to execute a Tri-Party Agreement with a lending institution and the subdivider which secures the construction and completion of the infrastructure improvements required under the ordinances of the City of City of Gainesville, a copy of which agreement is attached hereto as Exhibit "A".

**Section 3.** The Clerk of the Commission is authorized and directed to affix his signature to the record plat on behalf of the City Commission and accept the dedication of public rights-of-way, easements, and other dedicated portions as shown on the plat.

**Section 4.** This resolution shall be effective immediately upon adoption.

**PASSED AND ADOPTED** this \_\_\_ day of \_\_\_\_\_, 2000.

\_\_\_\_\_  
Paula M. DeLaney, Mayor

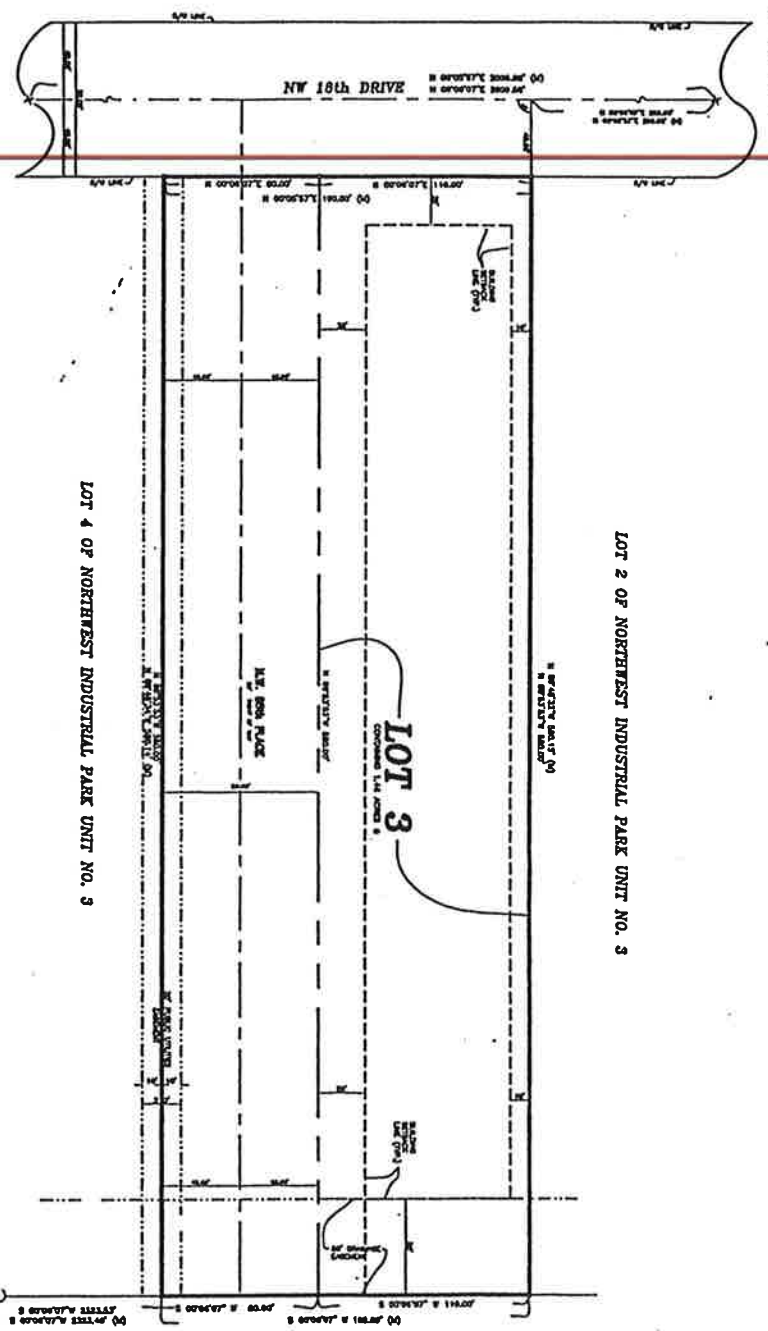
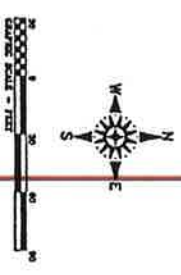
ATTEST:

APPROVED AS TO FORM AND LEGALITY:

\_\_\_\_\_  
Kurt Lannon,  
Clerk of the Commission

\_\_\_\_\_  
Marion J. Radson, City Attorney

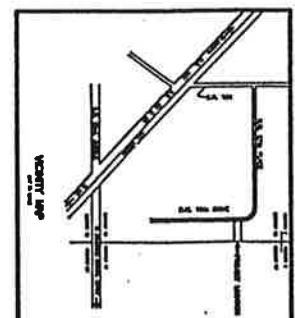
# REPLAT OF LOT 3 OF NORTHWEST INDUSTRIAL PARK UNIT NO. 3



LOT 2 OF NORTHWEST INDUSTRIAL PARK UNIT NO. 3

LOT 4 OF NORTHWEST INDUSTRIAL PARK UNIT NO. 3

UNPLATTED LANDS



**TERRITORY DESCRIPTION:** Lot 3  
 The portion of Lot 3 of Northwest Industrial Park, Unit No. 3, as shown on the Plat of Northwest Industrial Park, Unit No. 3, as filed for record in Public Record of Alachua County, Florida, Book 10, Page 10, and as amended by the Plat of Northwest Industrial Park, Unit No. 3, as filed for record in Public Record of Alachua County, Florida, Book 10, Page 10.

**Dedication**  
 I, the undersigned, do hereby dedicate to the public use of the State of Florida, the portion of Lot 3 of Northwest Industrial Park, Unit No. 3, as shown on the Plat of Northwest Industrial Park, Unit No. 3, as filed for record in Public Record of Alachua County, Florida, Book 10, Page 10, and as amended by the Plat of Northwest Industrial Park, Unit No. 3, as filed for record in Public Record of Alachua County, Florida, Book 10, Page 10.

State of Florida, County of Alachua  
 I hereby certify that the above described lands are owned by the State of Florida, and that the same are being dedicated to the public use of the State of Florida, and that the same are being dedicated to the public use of the State of Florida, and that the same are being dedicated to the public use of the State of Florida.

**Surveyors Certificate**  
 I, the undersigned, do hereby certify that the above described lands are owned by the State of Florida, and that the same are being dedicated to the public use of the State of Florida, and that the same are being dedicated to the public use of the State of Florida, and that the same are being dedicated to the public use of the State of Florida.

**REPLAT ADVERTISING & MARKING, INC.**  
 1001 WEST 10TH AVENUE, SUITE 200  
 GAINESVILLE, FLORIDA 32609  
 PHONE 352-336-1111  
 FAX 352-336-1112

**Approval and Acceptance by the City of Gelovinda**  
 I, the undersigned, do hereby certify that the above described lands are owned by the State of Florida, and that the same are being dedicated to the public use of the State of Florida, and that the same are being dedicated to the public use of the State of Florida, and that the same are being dedicated to the public use of the State of Florida.

**LEGEND**  
 A. Survey boundary as shown on Plat of Northwest Industrial Park, Unit No. 3, as filed for record in Public Record of Alachua County, Florida, Book 10, Page 10.  
 B. Survey boundary as shown on Plat of Northwest Industrial Park, Unit No. 3, as filed for record in Public Record of Alachua County, Florida, Book 10, Page 10.  
 C. Survey boundary as shown on Plat of Northwest Industrial Park, Unit No. 3, as filed for record in Public Record of Alachua County, Florida, Book 10, Page 10.  
 D. Survey boundary as shown on Plat of Northwest Industrial Park, Unit No. 3, as filed for record in Public Record of Alachua County, Florida, Book 10, Page 10.  
 E. Survey boundary as shown on Plat of Northwest Industrial Park, Unit No. 3, as filed for record in Public Record of Alachua County, Florida, Book 10, Page 10.  
 F. Survey boundary as shown on Plat of Northwest Industrial Park, Unit No. 3, as filed for record in Public Record of Alachua County, Florida, Book 10, Page 10.  
 G. Survey boundary as shown on Plat of Northwest Industrial Park, Unit No. 3, as filed for record in Public Record of Alachua County, Florida, Book 10, Page 10.  
 H. Survey boundary as shown on Plat of Northwest Industrial Park, Unit No. 3, as filed for record in Public Record of Alachua County, Florida, Book 10, Page 10.  
 I. Survey boundary as shown on Plat of Northwest Industrial Park, Unit No. 3, as filed for record in Public Record of Alachua County, Florida, Book 10, Page 10.  
 J. Survey boundary as shown on Plat of Northwest Industrial Park, Unit No. 3, as filed for record in Public Record of Alachua County, Florida, Book 10, Page 10.  
 K. Survey boundary as shown on Plat of Northwest Industrial Park, Unit No. 3, as filed for record in Public Record of Alachua County, Florida, Book 10, Page 10.  
 L. Survey boundary as shown on Plat of Northwest Industrial Park, Unit No. 3, as filed for record in Public Record of Alachua County, Florida, Book 10, Page 10.  
 M. Survey boundary as shown on Plat of Northwest Industrial Park, Unit No. 3, as filed for record in Public Record of Alachua County, Florida, Book 10, Page 10.  
 N. Survey boundary as shown on Plat of Northwest Industrial Park, Unit No. 3, as filed for record in Public Record of Alachua County, Florida, Book 10, Page 10.  
 O. Survey boundary as shown on Plat of Northwest Industrial Park, Unit No. 3, as filed for record in Public Record of Alachua County, Florida, Book 10, Page 10.  
 P. Survey boundary as shown on Plat of Northwest Industrial Park, Unit No. 3, as filed for record in Public Record of Alachua County, Florida, Book 10, Page 10.  
 Q. Survey boundary as shown on Plat of Northwest Industrial Park, Unit No. 3, as filed for record in Public Record of Alachua County, Florida, Book 10, Page 10.  
 R. Survey boundary as shown on Plat of Northwest Industrial Park, Unit No. 3, as filed for record in Public Record of Alachua County, Florida, Book 10, Page 10.  
 S. Survey boundary as shown on Plat of Northwest Industrial Park, Unit No. 3, as filed for record in Public Record of Alachua County, Florida, Book 10, Page 10.  
 T. Survey boundary as shown on Plat of Northwest Industrial Park, Unit No. 3, as filed for record in Public Record of Alachua County, Florida, Book 10, Page 10.  
 U. Survey boundary as shown on Plat of Northwest Industrial Park, Unit No. 3, as filed for record in Public Record of Alachua County, Florida, Book 10, Page 10.  
 V. Survey boundary as shown on Plat of Northwest Industrial Park, Unit No. 3, as filed for record in Public Record of Alachua County, Florida, Book 10, Page 10.  
 W. Survey boundary as shown on Plat of Northwest Industrial Park, Unit No. 3, as filed for record in Public Record of Alachua County, Florida, Book 10, Page 10.  
 X. Survey boundary as shown on Plat of Northwest Industrial Park, Unit No. 3, as filed for record in Public Record of Alachua County, Florida, Book 10, Page 10.  
 Y. Survey boundary as shown on Plat of Northwest Industrial Park, Unit No. 3, as filed for record in Public Record of Alachua County, Florida, Book 10, Page 10.  
 Z. Survey boundary as shown on Plat of Northwest Industrial Park, Unit No. 3, as filed for record in Public Record of Alachua County, Florida, Book 10, Page 10.

