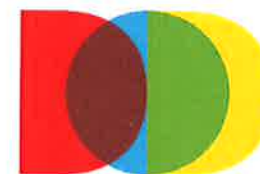


Tree Ordinance Stakeholder Committee Recommendations

5/11/2017



DEPT
OF
DOING



Parks, Recreation and Cultural Affairs
A **CAPRA** Accredited Agency

Presentation Topics

- Overview
 - Purpose
 - Committee
 - Tree Ordinance 101
- Ideas
 - Incentives for Preservation
 - Use of Mitigation Funds
 - Economic Impact
- Recommendations
 - Long Range Ideas



Purpose

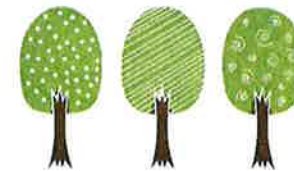
Make recommendations for quick changes to:



Incentives for tree preservation



Uses of tree mitigation funds



Economic impact of tree mitigation



Equity of tree mitigation requirements

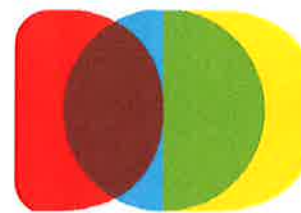
Committee



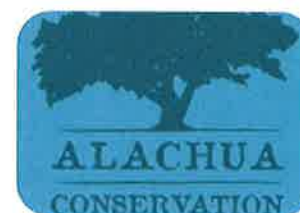
Debra Neill-Mareci



Janie Williams



Ralph Hilliard



Ivor Kincaide



John Fleming



Linda Demetropoulos



Michelle Lambert



Sergio Reyes



Committee



Prioritization process

INCENTIVES FOR HERITAGE TREE PRESERVATION

- MODIFICATION OF PARCEL REQUIREMENTS
- DENSITY BONUS CREDIT
- BONUS FOR TREE PRESERVATION IN PERFORMANCE-BASED APPROACH
- ~~EXEMPTION FOR PROPERTY TAXES~~

USES OF MITIGATION FUNDS

- TREE GIVEAWAYS FOR PRIVATE PROPERTY OWNERS
- REMOVAL & REPLANTING OF INVASIVE TREES ON PRIVATE PROP
- REMOVAL OF INVASIVE PLANTS W/IN STREAM BUFFERS ON PRIVATE PROP
- TREE REBATES FOR PRIVATE PROPERTY OWNERS WHO PLANT TREES MAINTENANCE IN ROW/Publc Property

Tree Ordinance 101



Tree Ordinance Purpose

The planting and preservation of trees to maintain a sustainable canopy.

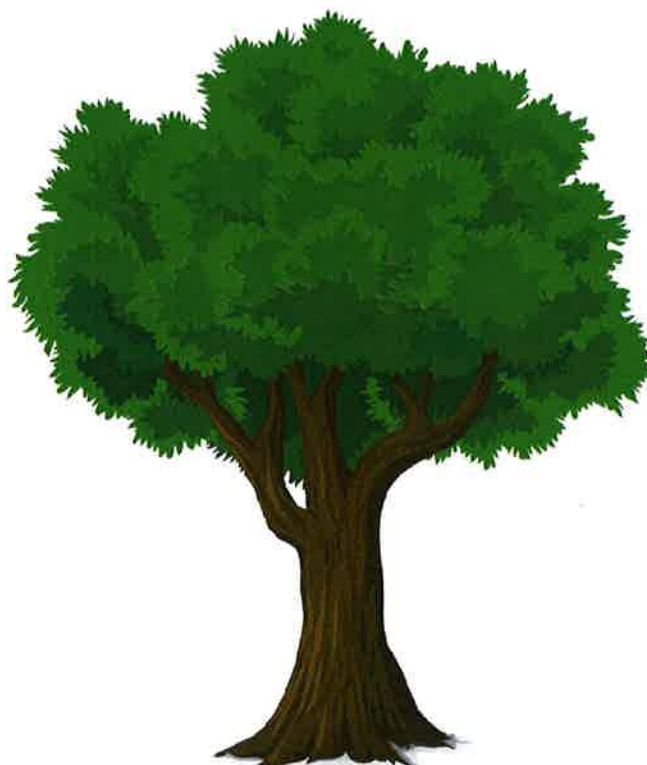


Why do we regulate trees?

Trees have a number of benefits that benefit the entire community:

- Improved air quality
- Improved water quality
- Reducing cooling costs
- Carbon sequestration
- Wildlife habitat

Heritage Trees



Native trees
> 20" diameter
breast height,
except for Loblolly
and Slash Pines,
Water and Laurel
Oaks, and
Sweetgums,
which are heritage
trees when 30">

“High quality” trees are regulated differently than other trees

High quality trees	
Live Oak	Tupelo
Sand Live Oak	Mockernut Hickory
Bluff Oak	Pignut Hickory
Basket Oak	Pecan
Southern Red Oak	Persimmon
Southern Magnolia	Basswood
Florida Maple	Tulip Poplar
Longleaf Pine	White Ash
Spruce Pine	Green Ash
Cedar Elm	Yaupon, Dahoon & American Holly
Winged Elm	Bald Cypress
Florida Elm	Pond Cypress

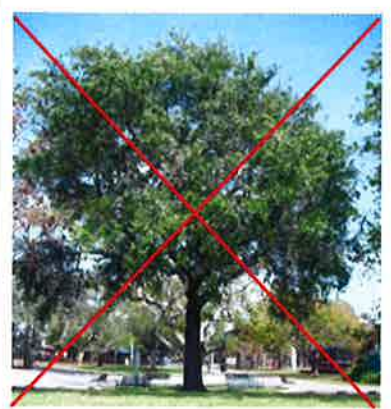


Single family vs. non-single family regulations



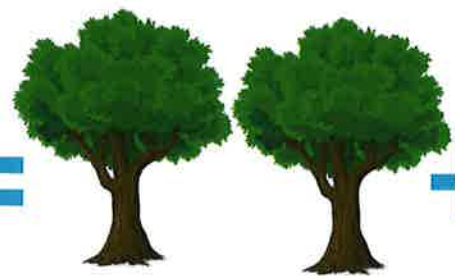
Removal of similar tree on different zoned properties regulated differently

Mitigation for removal of a heritage tree on non single family zoned property



Heritage tree removal

=



Plant two trees

+



Mitigation fee



Calculation

Ex. 20' Live Oak in fair / better condition
 $(3.14) \times (1/2 \times 20)^2 = 314 \text{ sq. in. truck area}$
 $(314 \text{ sq. in.}) \times (\$40) = \$12,560 \text{ sq. in. value}$
 $(\$12,560) \times (.55) = \$6,908 \text{ appraised value}$

The fee goes into a fund, which can be spent on:



New trees on public property or ROW

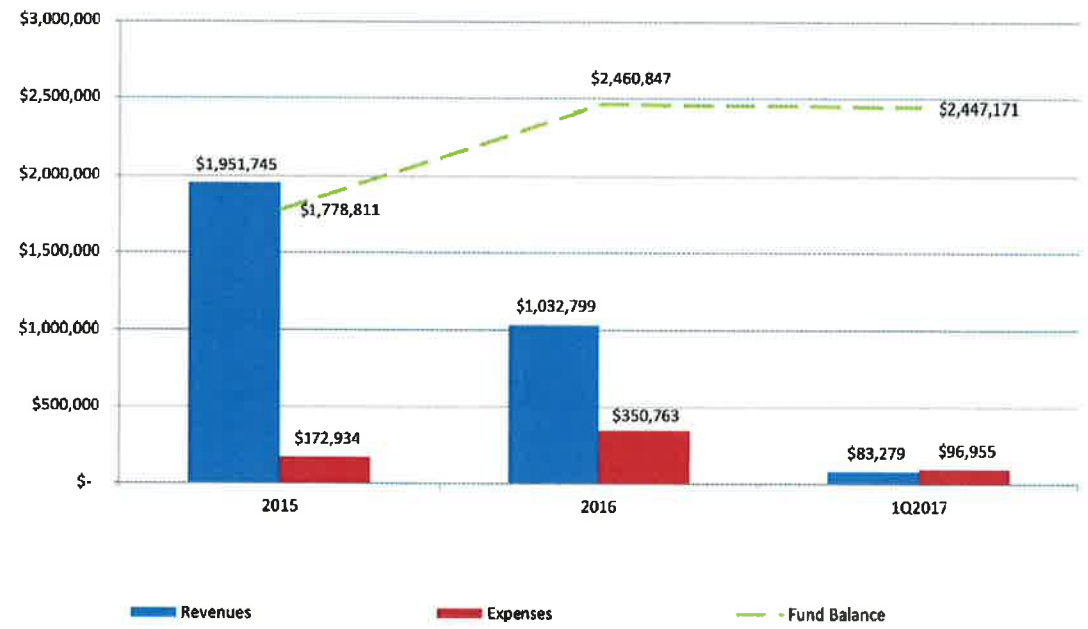


Land acquisition for conservation

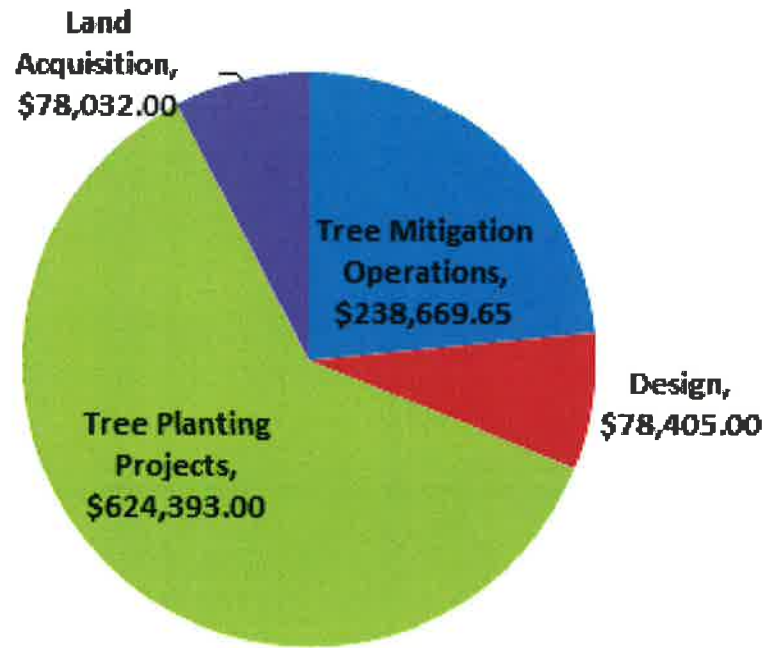
Additional uses of mitigation funds:	
<ul style="list-style-type: none"> • Tree establishment • Habitat restoration projects • Program coordinator for tree mitigation funds 	<ul style="list-style-type: none"> • Soil measures that support tree growth • Contract growing of desired species • Tree planting in medians of state and county roads and public works projects

Mitigation Fund Revenues & Expenditures:

Fund 140, Tree Mitigation Fund Revenues and Expenses FY15 - 1Q FY17



Allocation of Mitigation Funds



Incentives:



Incentives:

Modification of parcel requirements

Density Bonus Credit

Reduction in Stormwater Management Utility fees

Bonus for tree preservation in a performance based approach

Reduction in storm water basin volume requirements



Incentives:

Modification of parcel requirements

Density Bonus Credit

Reduction in Stormwater Management Utility fees

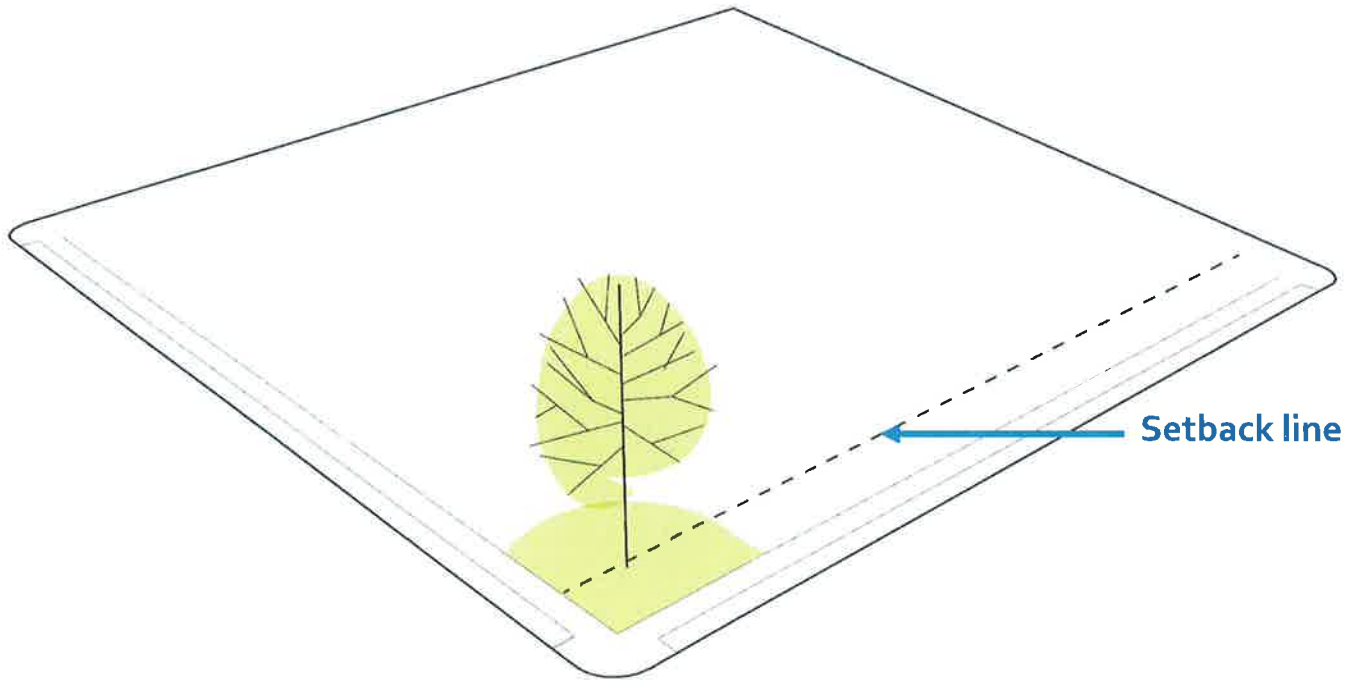
Bonus for tree preservation in a performance based approach

Reduction in storm water basin volume requirements



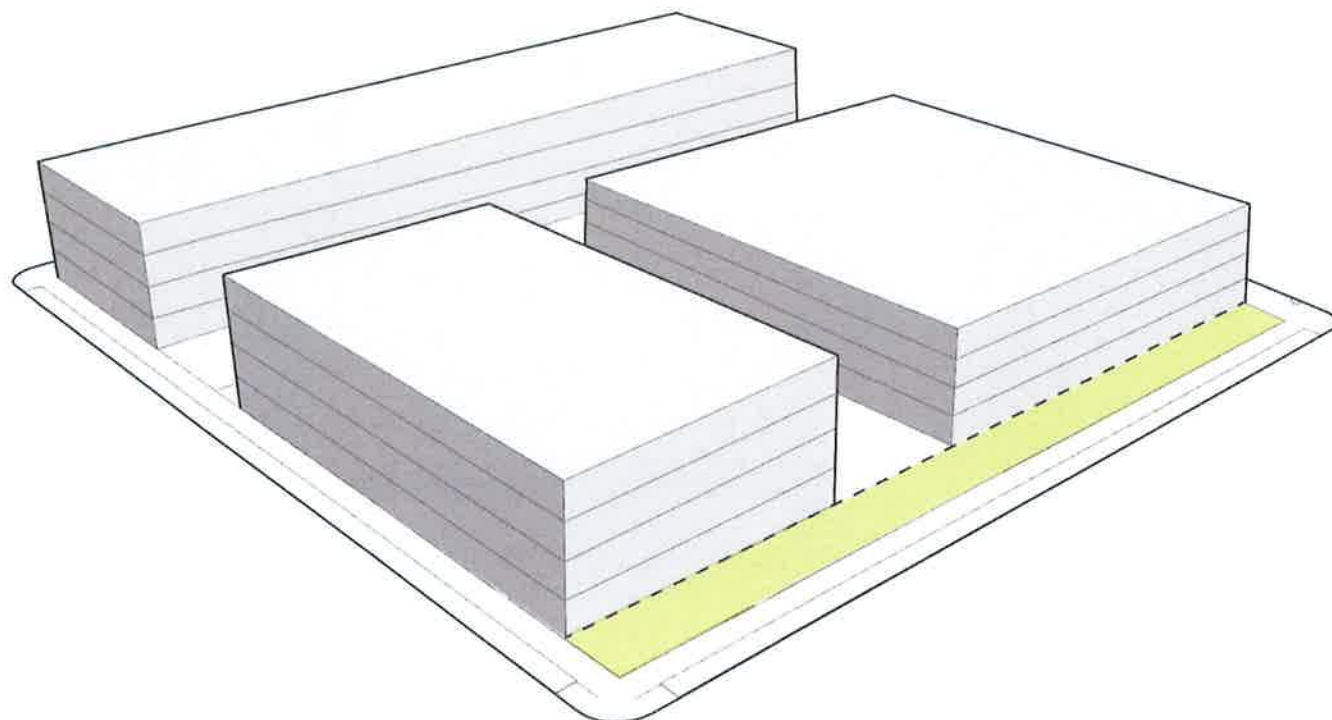
Modifications of parcel requirements:

- Lot area
- Setbacks
- Street widths and layout



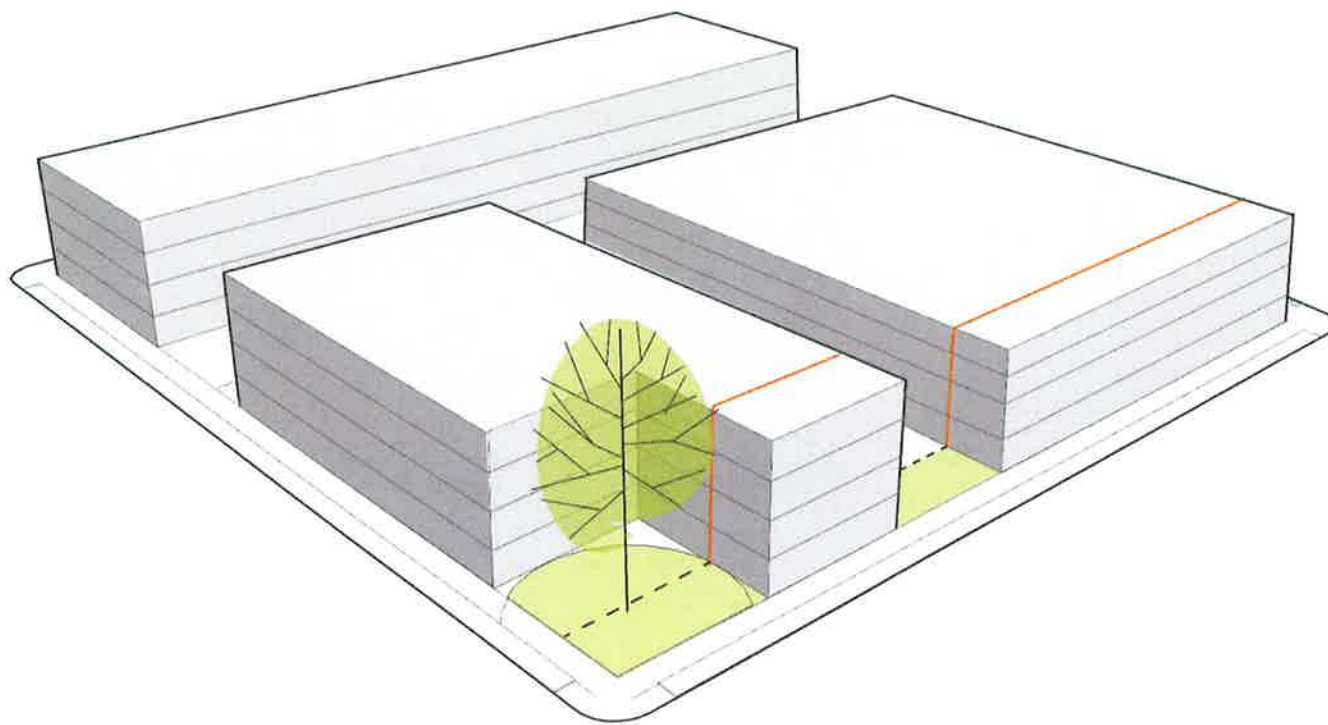
Modifications of parcel requirements:

- Lot area
- Setbacks
- Street widths and layout



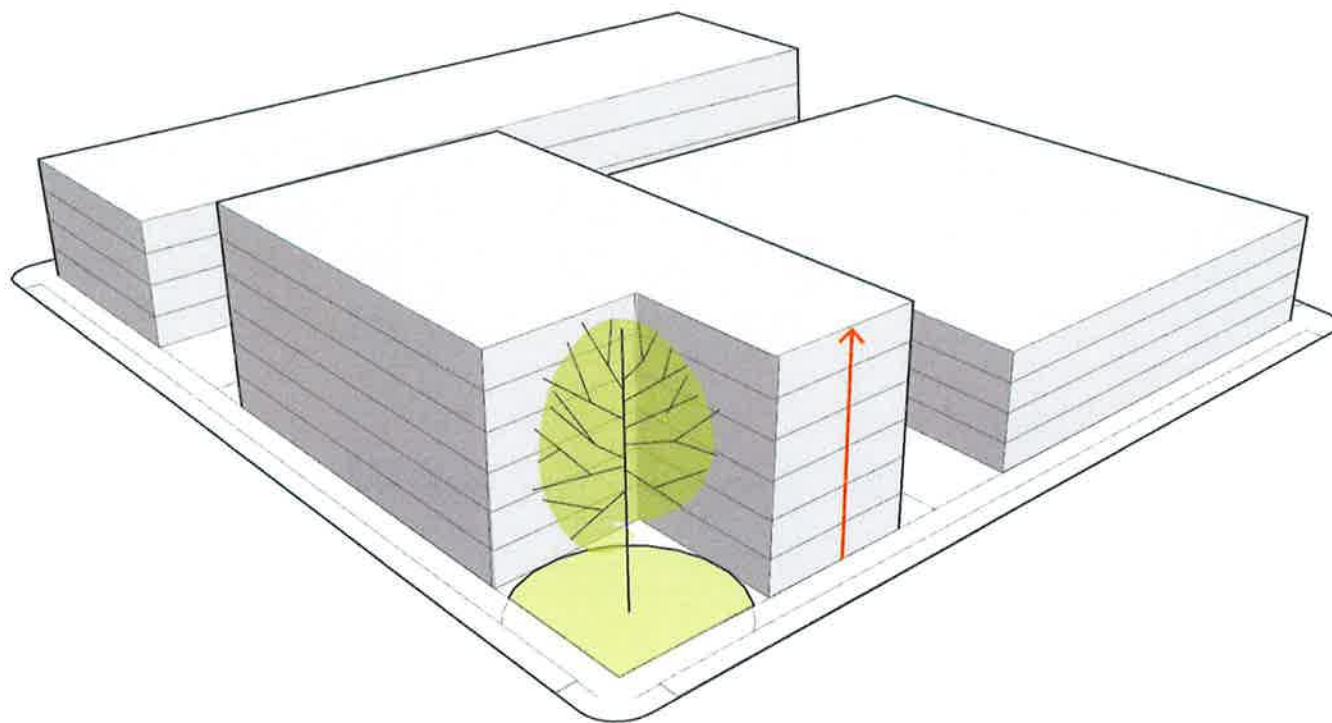
Modifications of parcel requirements:

- Lot area
- Setbacks
- Street widths and layout



Parks, Recreation and Cultural Affairs
A CAPRA Accredited Agency

Density Bonus Credit



Reduce SMU
(Stormwater
Management
Utility) fees



Uses of mitigation funds:

- Tree rebates for property owners who plant a tree
- Removal of invasive trees on public property
- Urban Forest Ecological Assessment
- Establishment of public parks within new large developments
- Purchase of land for street tree planting
- Urban Forest Management Plan
- Conservation easement purchases for high quality trees
- Tree maintenance on public property
- Tree giveaways
- Tree education programs
- Replacement tree planting for removal of non-high quality trees
- Removal of invasives on private property and replanting of shade trees
- Removal of invasives within stream buffers on private property

Uses of mitigation funds:

Tree rebates for property owners who plant a tree

Removal of invasive trees on public property

Urban Forest Ecological Assessment

Urban Forest Management Plan

Establishment of public parks within new large developments

Purchase of land for street tree planting

Conservation easement purchases for high quality trees

Tree maintenance on public property

Tree giveaways

Tree education programs

Replacement tree planting for removal of non-high quality trees

Removal of invasives on private property and replanting of shade trees

Removal of invasives within stream buffers on private property



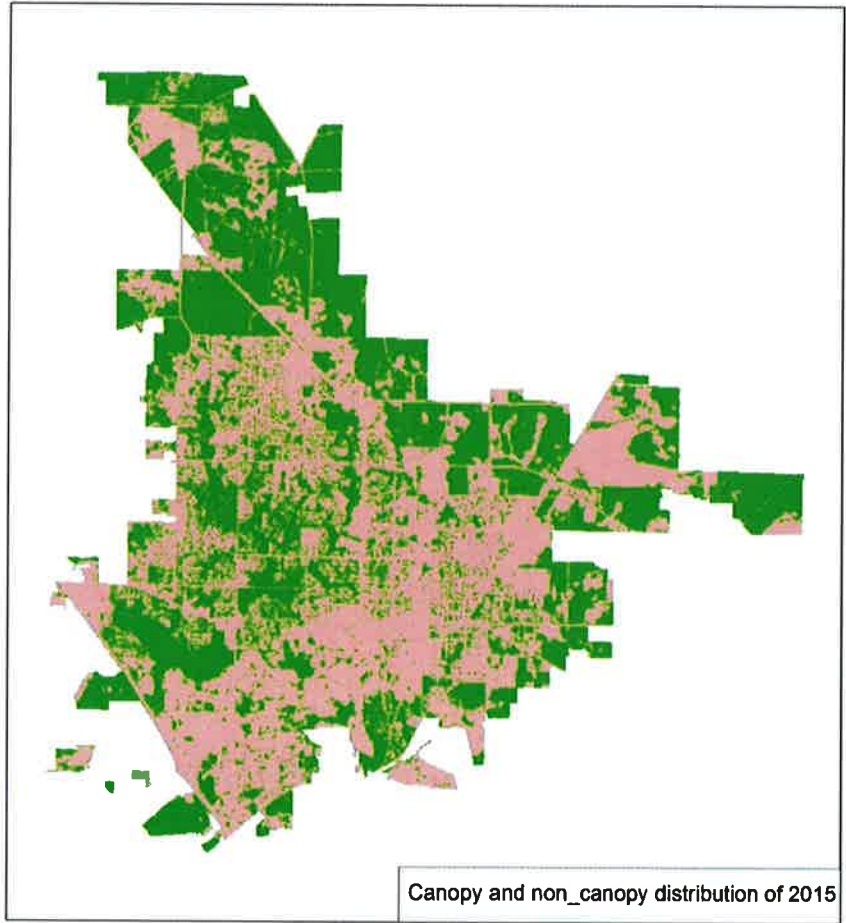
Tree rebates



Invasive tree removal on public property



Urban Forest Ecological Assessment



Uses of mitigation funds:

Tree rebates for property owners who plant a tree

Removal of invasive trees on public property

Urban Forest Ecological Assessment

Urban Forest Management Plan

Purchase of land for street tree planting

Establishment of public parks within new large developments

Conservation easement purchases for high quality trees

Tree maintenance on public property

Tree giveaways

Tree education programs

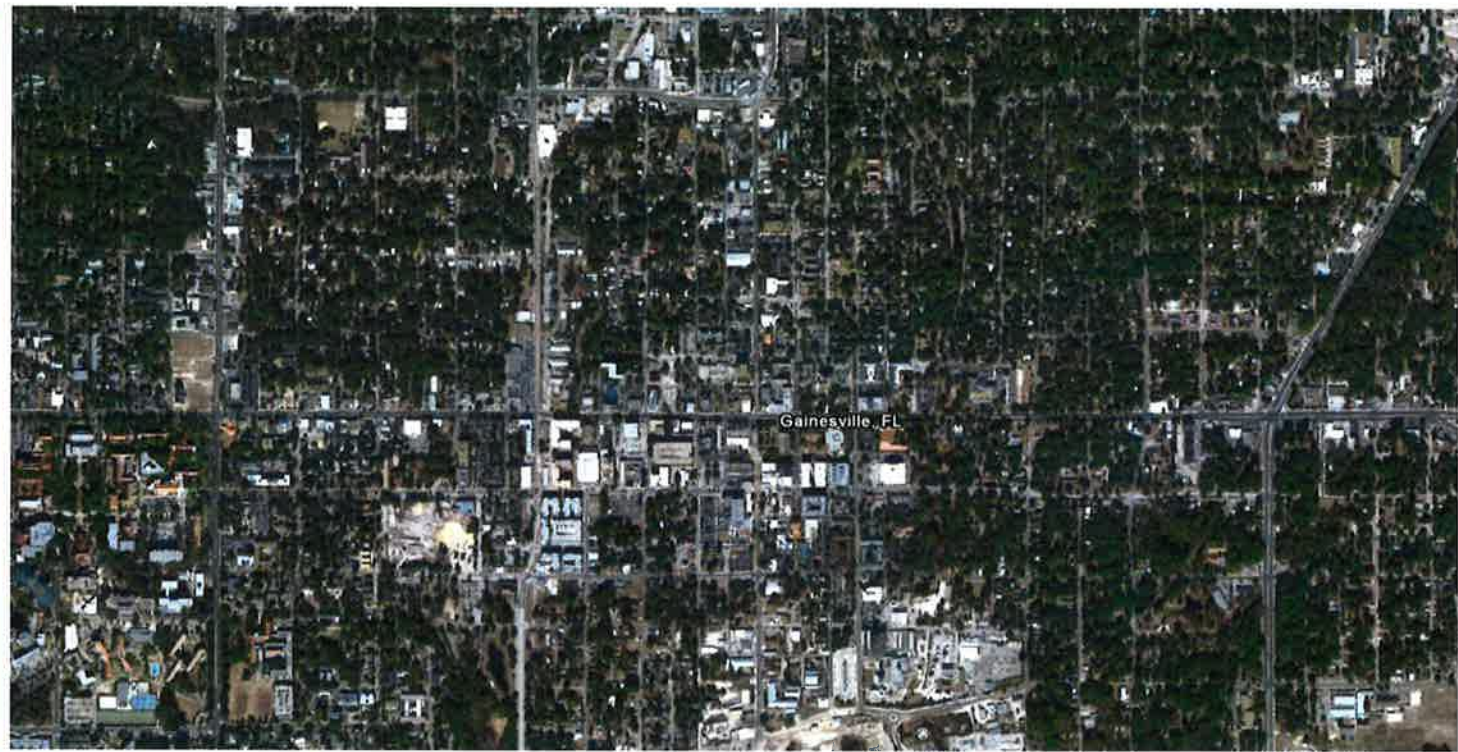
Replacement tree planting for removal of non-high quality trees

Removal of invasives on private property and replanting of shade trees

Removal of invasives within stream buffers on private property



Urban Forest Management Plan



Purchase of land for street tree planting



Parks, Recreation and Cultural Affairs
A CAPRA Accredited Agency

Establishment of public parks within large new developments



Conservation easement purchases for large heritage trees



Tree maintenance on public property



Flexibility in the collection/use of mitigation funds:

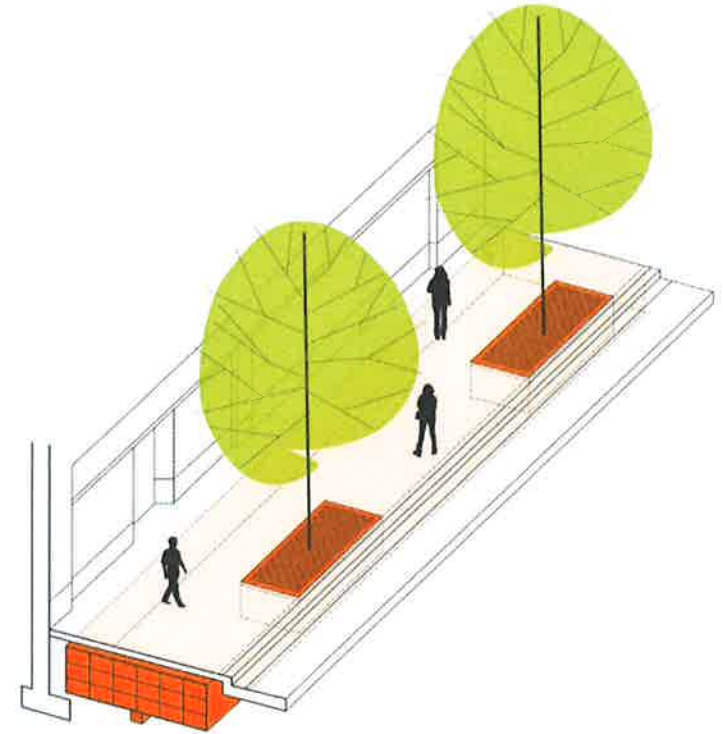
Reduction in mitigation fees collected for a site for measures that promote the urban forest canopy on that site

Allow mitigation funds to be used for tree planting projects on public property

Reduction in mitigation fees collected for a site for measures that have ecological benefit to the wider community



Reduction in fees for measures that support urban trees



Allow funds to be dedicated to a specific tree planting project



Reduction in fees for measures that have ecological benefit



Parks, Recreation and Cultural Affairs
A CAPRA Accredited Agency

Economic Impact of Mitigation

Inch for inch mitigation rather than fees for affordable housing properties

Cap on mitigation fees as a percentage of the assessed property values

Set a maximum mitigation per acre for properties

Graduated scale for mitigation, with a lower cap in dense urban areas

Two for one replanting rather than inch for inch replacement of non-high quality heritage trees



Economic Impact of Mitigation

Inch for inch mitigation rather than fees for affordable housing properties

Cap on mitigation fees as a percentage of the assessed property values

Set a maximum mitigation per acre for properties

Graduated scale for mitigation based on zoning classification, with a lower cap in dense urban areas

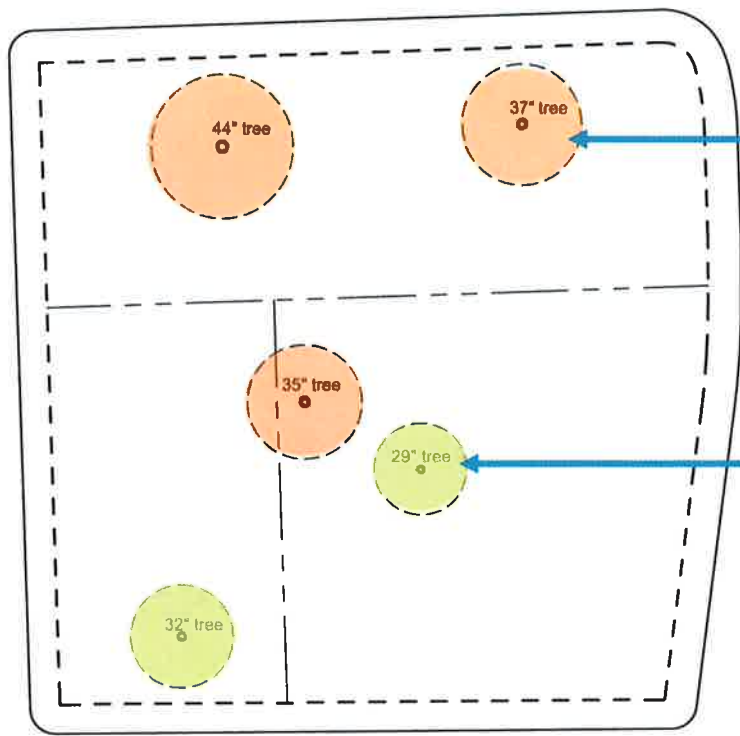
Two for one replanting rather than inch for inch replacement of non-high quality heritage trees



Inch for inch
mitigation
rather than
fees for
affordable
housing
properties



Existing Cap on Mitigation



Fee payment for three trees per acre

Inch for inch planting for additional trees

Graduated scale for mitigation fees



Cap on mitigation fees as a % of assessed property value



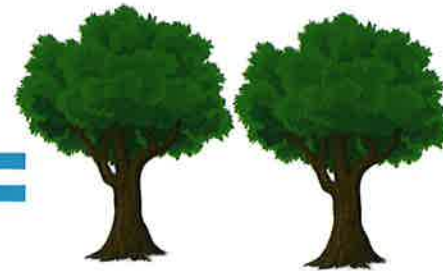
Set a maximum mitigation fee per acre



Two for one
rather than
inch for inch
replacement
of non high
quality
Heritage trees



Non-high quality
Heritage tree removal



Plant two trees

Recommendations for Quick Changes to the Tree Ordinance

Topic	Ideas
Incentives	Modification of parcel requirements
	Density Bonus Credit
Mitigation Fund Uses	Tree rebates for property owners who plant a tree
	Removal of invasive trees on public property
	Urban Forest Ecological Assessment
	Purchase of land in ROW acquisition for street tree planting
	Urban Forest Management Plan
	Tree maintenance on public property
	Tree giveaways
Economic Impact of Mitigation	Tree education programs
	Inch for inch mitigation rather than fees for affordable housing properties
	Two for one replanting rather than inch for inch replacement of non-high quality heritage trees



Recommendations for Long Range Changes to the Tree Ordinance

Topic	Idea
Mitigation Fund Uses	Establishment of public parks within new large developments
	Conservation easement purchases for high quality trees
	Replacement tree planting for removal of non-high quality trees
	Removal of invasives on private property and replanting of shade trees
	Removal of invasives within stream buffers on private property
	Reduction in mitigation fees collected for a site for measures that promote the urban forest canopy on that site
	Allow mitigation funds to be used for tree planting projects on public property
	Reduction in mitigation fees collected for a site for measures that have ecological benefit to the wider community



Recommendation for Long Range Changes to the Tree Ordinance

Topic	Idea
Economic Impact of Mitigation	Cap on mitigation fees as a percentage of the assessed property values
	Set a maximum mitigation per acre for properties
	Graduated scale for mitigation, with a lower cap in dense urban areas
	Require performance bonds for tree planting with a corresponding reduction in quantity requirements
Incentives	Reduction in SMU fees
	Bonus for tree preservation in a performance based approach
	Reduction in storm water basin volume requirements



Recommendations to City Commission

- **Vote on recommendations for Quick Changes to the Tree Ordinance.**
- **Direct staff to develop an implementation plan for the long range changes to the tree ordinance by Arbor Day 2018.**



Questions?

