



Planning and Development Services Department

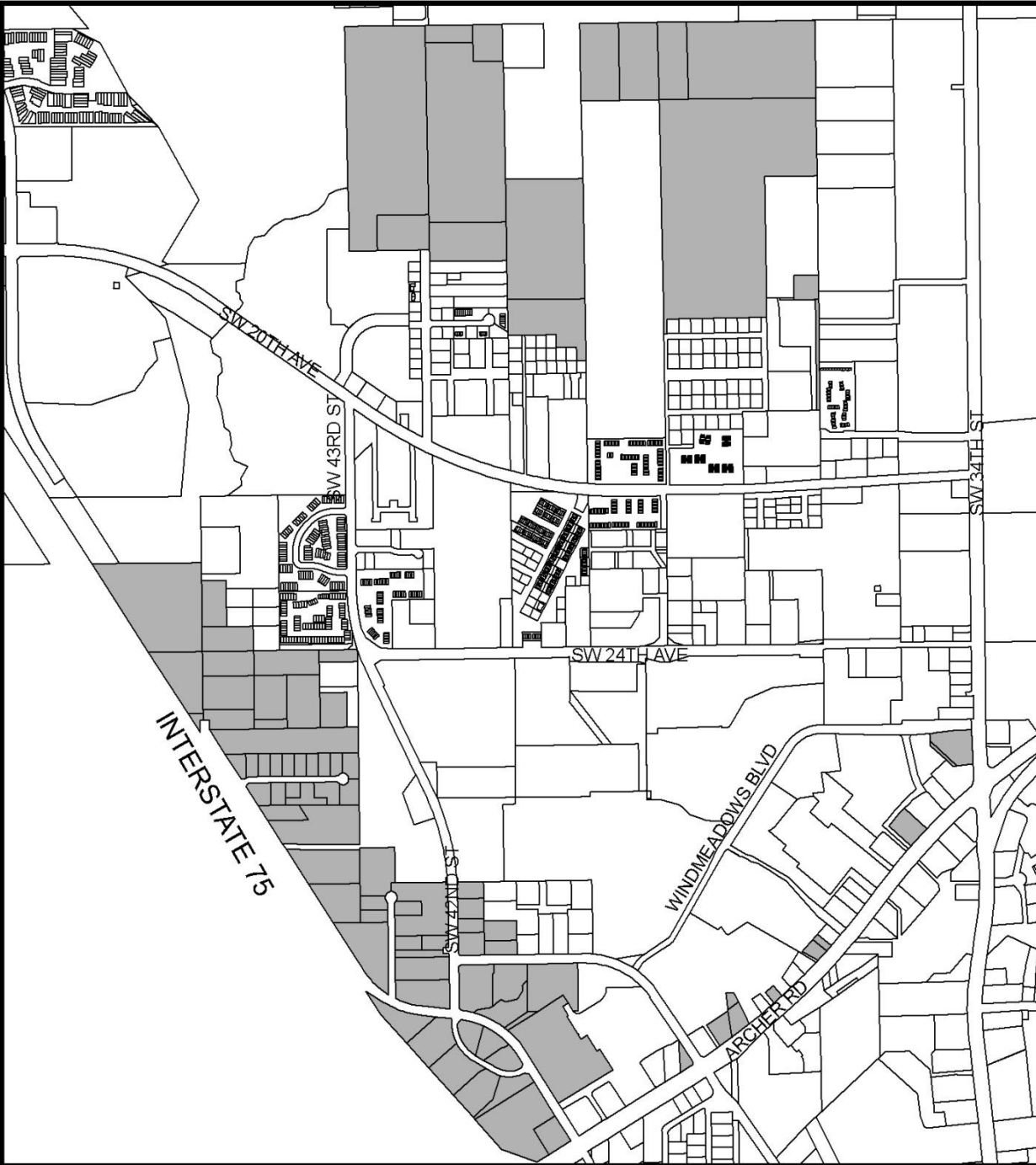
PB-10-135LUC
PB-10-136ZON
Southwest Annexation
Susan Niemann
3 March 2011

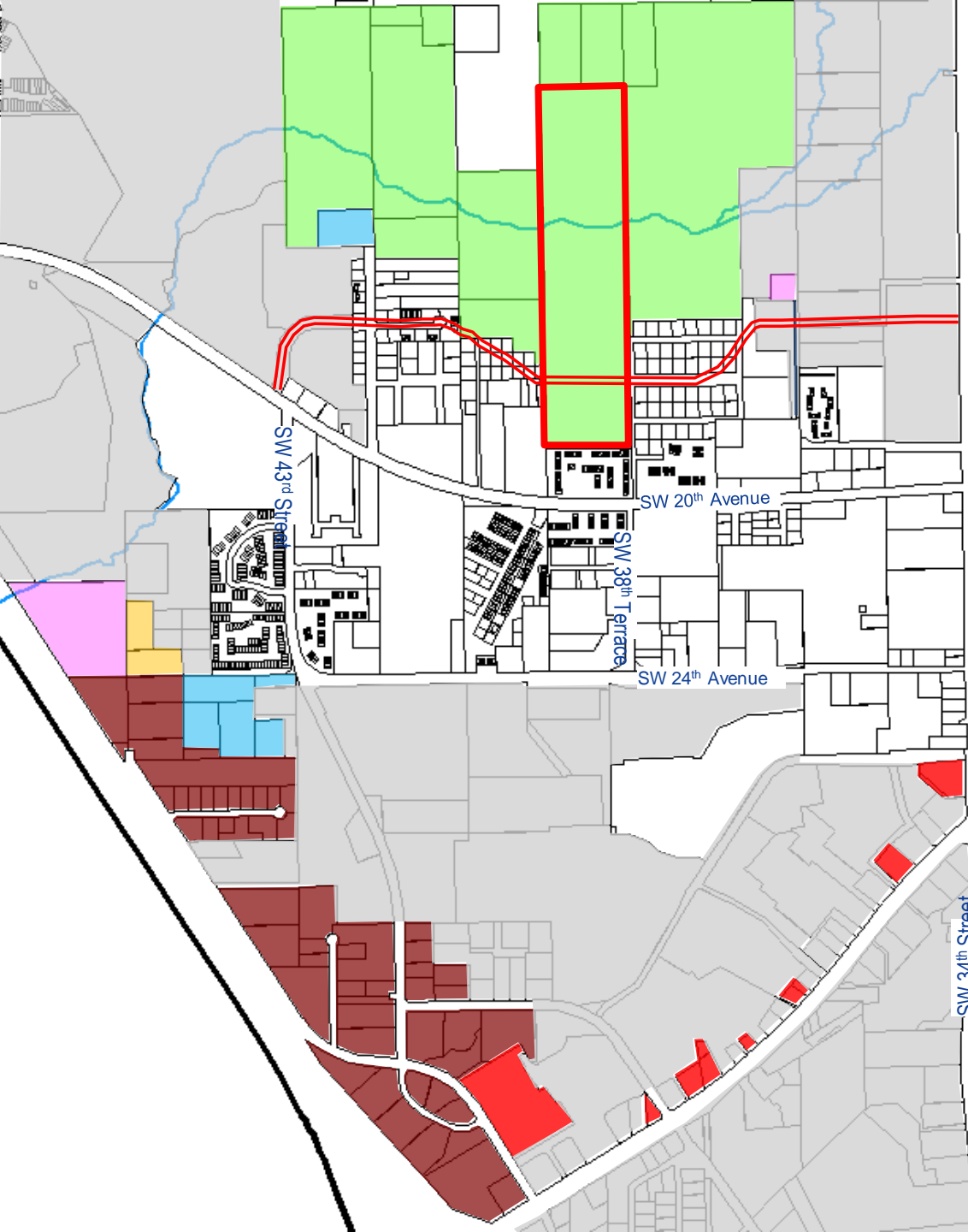
Petition Summary

- **Petitioner is City of Gainesville**
- **Annexed lands must have City land use and zoning**
- **Large area of Conservation, Commercial, and Industrial lands**
- **Portions of Southwest Annexation petition from late 2009**

Subject Area

- North
- West
- South





Education
ED



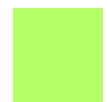
Residential Low Den.
RMF-5



Residential Med. Den.
RMF-7



Public Facilities
PS



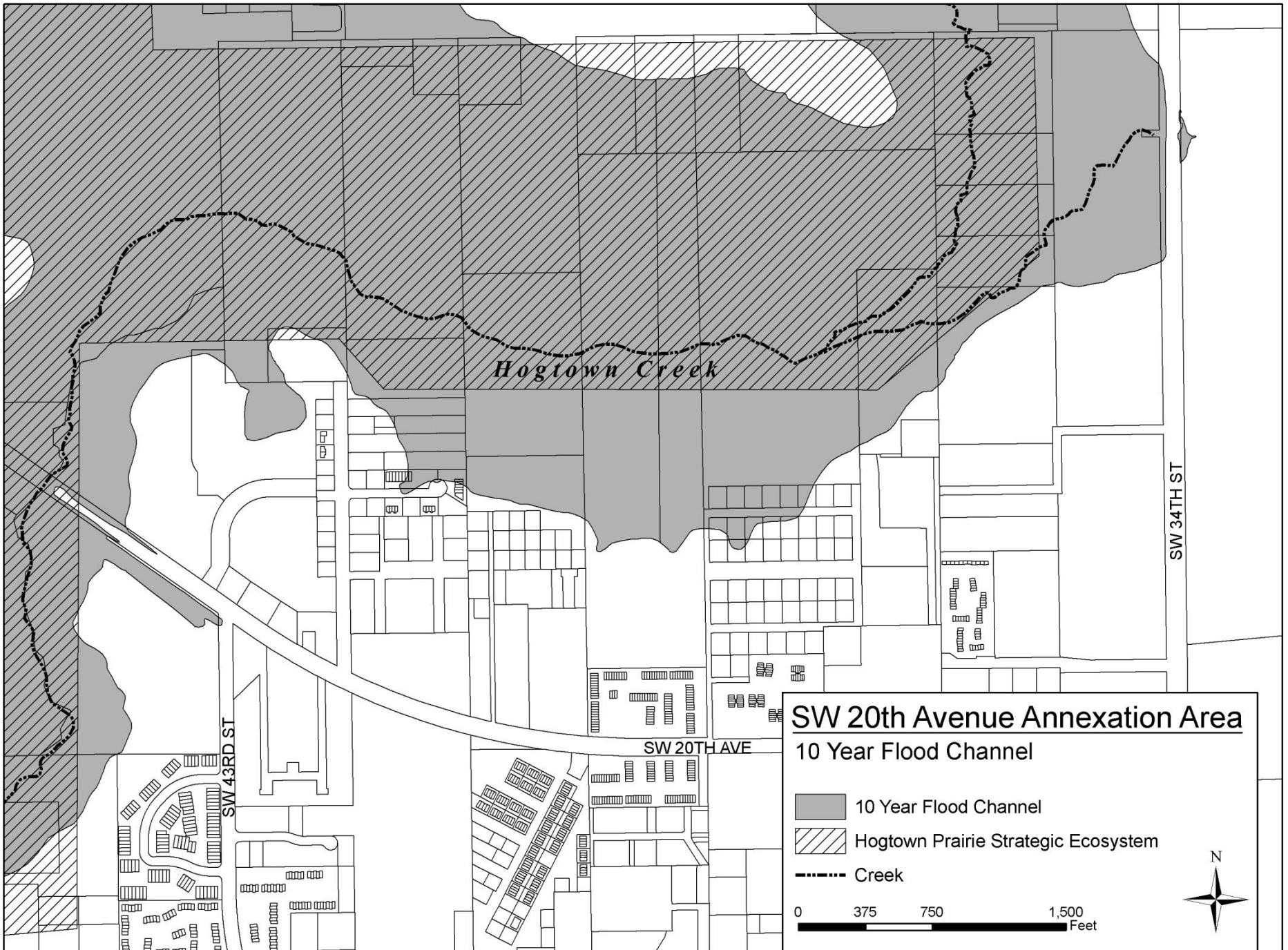
Conservation
CON



Business Industrial
BI






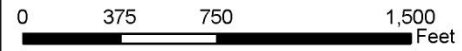
Commercial
BUS

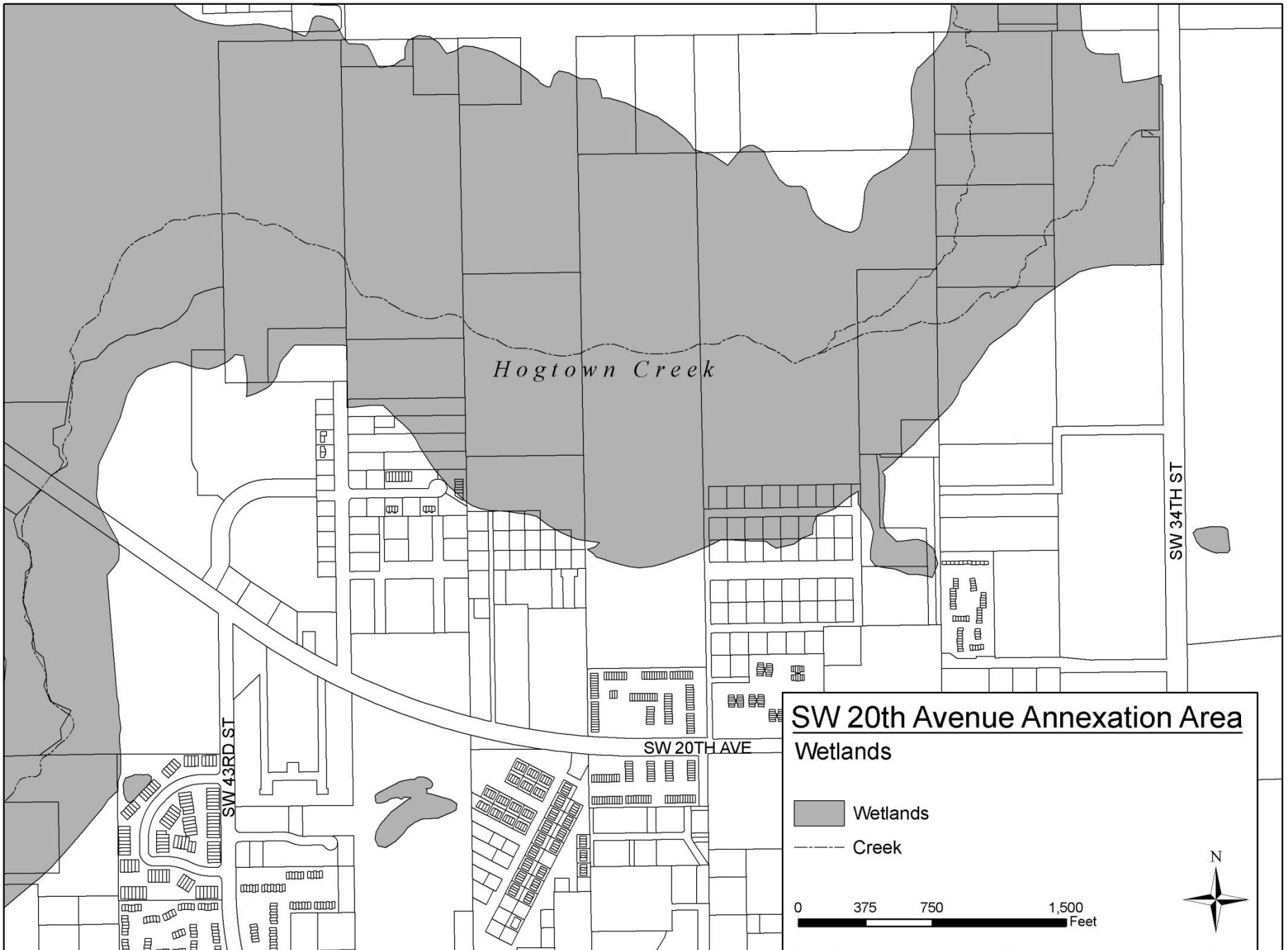


Hogtown Creek

SW 20th Avenue Annexation Area 10 Year Flood Channel

-  10 Year Flood Channel
-  Hogtown Prairie Strategic Ecosystem
-  Creek





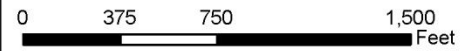
Hogtown Creek

SW 20th Avenue Annexation Area

Wetlands

Wetlands

Creek



Land Use and Zoning

Proposed Land Use/Zoning	Acres	Percent
Business Industrial/BI	84.6	29.7%
Conservation/CON	153.5	53.9%
Commercial/BUS	15.0	5.3%
Residential Low/RMF-5	13.2	4.6%
Public Facilities/PS	13.9	4.9%
Residential Medium/RMF-7	4.0	1.4%
Education/ED	0.7	0.2%
	284.9	100.0%

Recommendation 135LUC

- **Staff recommends approval of Petition PB-10-135LUC as approved by the Plan Board.**
- **The City Plan Board voted to approve Petition PB-10-135LUC with an amendment to delete parcel 06724-000-000 and to update the Staff Report.**

Recommendation 136ZON

- Staff recommends approval of Petition PB-10-136ZON as approved by the City Plan Board.
- The City Plan Board voted to approve Petition PB-10-136ZON with amendments:
 - Delete parcel 06724-000-000 and update the Staff Report; and
 - Waive the requirement for a preliminary development plan for properties being rezoned to PS.