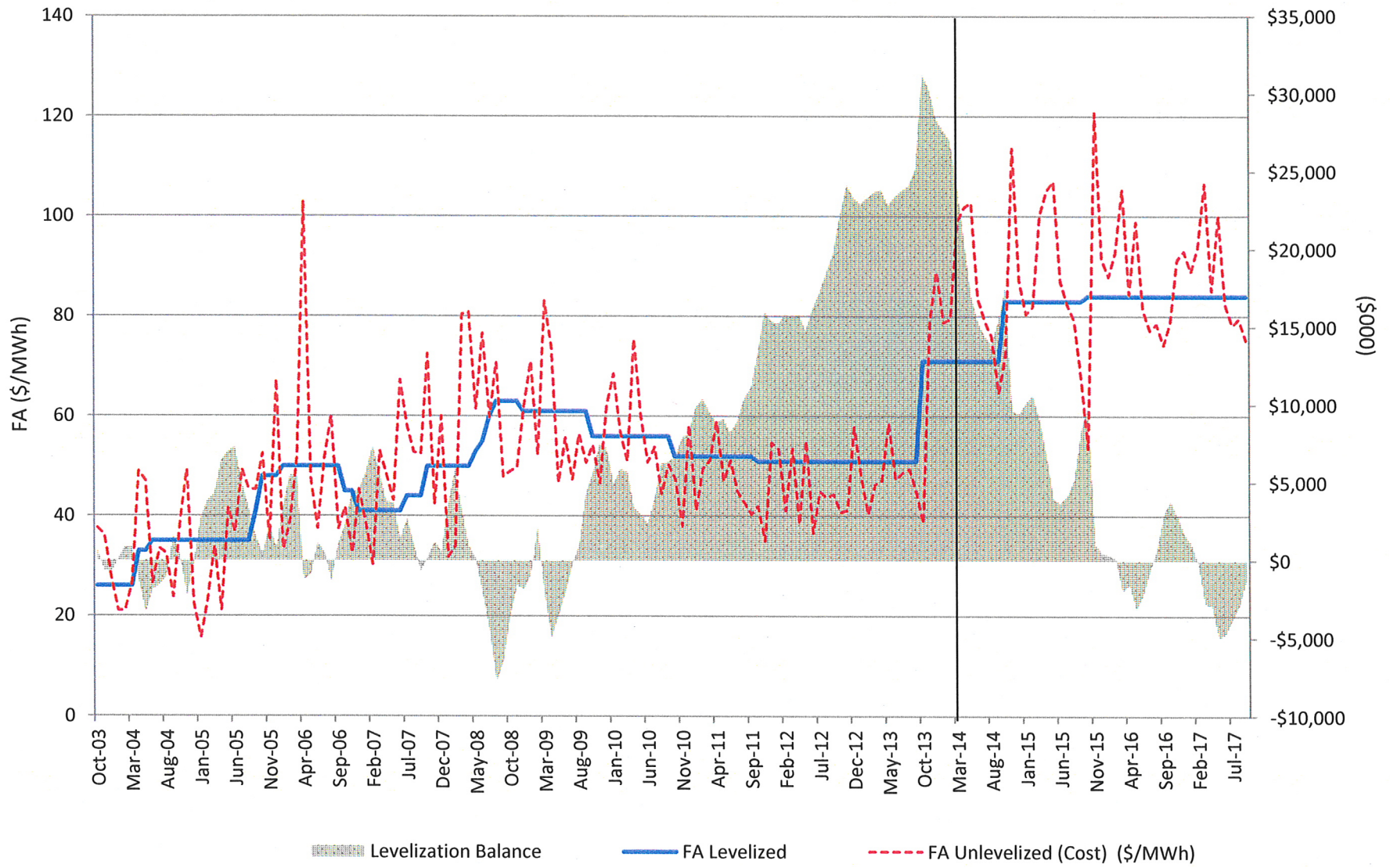


Levelized and Unlevelized Fuel Adjustment
 October 2003 - May 2013 Actuals
 June 2013 - September 2017 Estimates



COMPARISON OF May 2013 COMMERCIAL ELECTRIC RATES COMPILED BY FLORIDA MUNICIPAL ELECTRIC ASSOCIATION, INC. - www.publicpower.com															
	Usage Class	NON-DEMAND 750KWH	NON-DEMAND 1,500KWH	30KW-6,000KWH	40KW-10,000KWH1500	75KW-15,000KWH	75KW-30,000KWH	150KW-30,000KWH	150KW-60,000KWH	300KW-60,000KWH	300KW-120,000KWH	500KW-100,000KWH	500KW-200,000KWH		
	# of Customers													Average Per City	
1	Jacksonville	420,000	\$88.25	\$167.25	\$641.23	\$1,062.55	\$1,881.55	\$3,048.10	\$3,678.10	\$6,011.20	\$7,271.20	\$11,937.50	\$12,062.00	\$19,839.00	
	% from GRU	29%	25%	47%	36%	28%	26%	23%	23%	4%	9%	19%	21%	24%	
2	Orlando	185,000	\$90.49	\$170.74	\$681.00	\$1,035.00	\$1,657.50	\$2,685.00	\$3,285.00	\$5,340.00	\$6,394.20	\$10,463.40	\$10,607.00	\$17,389.00	
	% from GRU	37%	30%	38%	39%	45%	43%	38%	39%	18%	25%	35%	38%	35%	
3	Lakeland	120,000	\$82.64	\$155.28	\$624.17	\$950.28	\$1,515.42	\$2,475.84	\$3,000.84	\$4,921.68	\$5,971.68	\$9,813.36	\$10,126.80	\$16,298.60	
	% from GRU	50%	43%	51%	52%	59%	56%	51%	50%	27%	33%	42%	47%	47%	
4	Tallahassee	114,000	\$76.25	\$143.59	\$752.14	\$1,104.32	\$1,791.37	\$2,700.67	\$3,523.42	\$5,342.02	\$6,987.52	\$10,624.72	\$11,559.32	\$17,574.32	
	% from GRU	63%	55%	25%	30%	35%	43%	28%	39%	8%	23%	24%	36%	34%	
5	Gainesville	92,000	\$124.25	\$222.50	\$939.50	\$1,440.00	\$2,410.05	\$3,851.25	\$4,520.10	\$7,402.50	\$7,557.90	\$13,045.30	\$14,367.00	\$23,975.00	
6	Ocala	50,000	\$94.07	\$175.92	\$710.01	\$1,100.55	\$1,738.35	\$2,953.50	\$3,519.75	\$5,920.08	\$7,015.05	\$11,815.65	\$12,050.45	\$19,951.45	
	% from GRU	32%	26%	32%	31%	39%	30%	28%	25%	8%	10%	19%	20%	25%	
Average per usage class			42%	36%	38%	37%	41%	40%	34%	35%	13%	20%	28%	32%	33%
7	FPL		75.73	144.35	648.51	959.03	1593.33	2347.53	3168.03	4676.43	6317.43	9334.23	10667.91	15218.91	
	% from GRU		64%	54%	45%	50%	51%	64%	43%	58%	20%	40%	35%	58%	48%
8	Duke		92.1	172.62	621.31	972.89	1535.89	2648.44	3060.19	5285.79	6108.79	10558.99	10023.51	17366.06	
	% from GRU		35%	29%	51%	48%	57%	45%	48%	40%	24%	24%	43%	38%	40%
AVERAGE OF FPL & DUKE			49%	42%	48%	49%	54%	55%	45%	49%	22%	32%	39%	48%	44%

Duke Energy FL Utilization - PPA

Contract 2009-2013

	Demand (MW)	Energy (MWh)	%PF Usage
3/15/2008	75	29,239	95.55%
Apr-08	75	27,805	72.41%
May-08	10	4,950	66.53%
Jun-08	50	28,350	76.21%
Jul-08	50	37,200	100.00%
Aug-08	50	37,200	100.00%
Sep-08	50	34,820	93.60%
Oct-08	50	32,825	88.24%
Nov-08	50	29,255	78.64%
Dec-08	50	27,630	74.27%
Jan-09	50	29,970	80.56%
Feb-09	50	17,095	50.88%
Mar-09	50	12,600	33.87%
Apr-09	50	16,615	46.15%
May-09	50	11,496	30.90%
Jun-09	50	18,050	50.14%
Jul-09	50	16,080	43.23%
Aug-09	50	13,670	36.75%
Sep-09	50	7,075	19.65%
Oct-09	50	11,772	31.65%
Nov-09	50	820	2.28%
Dec-09	50	6,630	17.82%
Jan-10	50	18,621	50.06%
Feb-10	50	11,332	33.73%
Mar-10	50	2,753	7.40%
Apr-10	50	4,381	12.17%
May-10	50	18,305	49.21%
Jun-10	50	24,233	67.31%
Jul-10	50	23,160	62.26%
Aug-10	50	22,030	59.22%
Sep-10	50	13,656	37.93%
Oct-10	50	2,255	6.06%
Nov-10	50	0	0.00%
Dec-10	50	14,510	39.01%
Jan-11	50	10,125	27.22%
Feb-11	50	5,440	16.19%
Mar-11	50	3,870	10.40%
Apr-11	50	21,285	59.13%
May-11	50	17,535	47.14%
Jun-11	50	13,475	37.43%
Jul-11	50	16,950	45.56%
Aug-11	50	20,610	55.40%
Sep-11	50	6,765	18.79%
Oct-11	50	1,270	3.41%
Nov-11	50	2,740	7.61%
Dec-11	50	235	0.63%
Jan-12	50	0	0.00%
Feb-12	50	200	0.60%
Mar-12	50	200	0.54%
Apr-12	50	445	1.24%
May-12	50	3,255	8.75%
Jun-12	50	1,140	3.17%
Jul-12	50	3,142	8.45%
Aug-12	50	2,310	6.21%
Sep-12	50	2,564	7.12%
Oct-12	50	5,632	15.14%
Nov-12	50	8,055	22.38%
Dec-12	50	590	1.59%
Jan-13	50	965	2.59%
Feb-13	50	1,020	3.04%
Mar-13	50	1,285	3.45%
Apr-13	50	7,756	21.54%
May-13	50	4,429	11.91%
Jun-13	50	3,190	8.86%
Jul-13	50	1,170	3.15%
Aug-13	50		
Sep-13	50		

thru 7/14/13

COMPARISON OF May 2013 COMMERCIAL ELECTRIC RATES COMPILED BY FLORIDA MUNICIPAL ELECTRIC ASSOCIATION, INC. - www.publicpower.com														
2014 RATE INCREASES														
	Usage Class	NON-DEMAND 750KWH	NON-DEMAND 1,500KWH	30KW-6,000KWH	40KW-10,000KWH/1500	75KW-15,000KWH	75KW-30,000KWH	150KW-30,000KWH	150KW-60,000KWH	300KW-60,000KWH	300KW-120,000KWH	500KW-100,000KWH	500KW-200,000KWH	Average Per City
	# of Customers													
1	Jacksonville	420,000	\$88.25	\$167.25	\$641.23	\$1,062.55	\$1,881.55	\$3,048.10	\$3,678.10	\$6,011.20	\$7,271.20	\$11,837.50	\$12,062.00	\$19,839.00
	% from GRU	35%	32%	61%	49%	41%	39%	35%	35%	14%	20%	31%	33%	36%
2	Orlando	185,000	\$90.49	\$170.74	\$681.00	\$1,035.00	\$1,657.50	\$2,685.00	\$3,285.00	\$5,340.00	\$6,394.20	\$10,463.40	\$10,607.00	\$17,389.00
	% from GRU	51%	43%	52%	53%	60%	58%	51%	52%	30%	37%	49%	52%	49%
3	Lakeland	120,000	\$82.64	\$155.28	\$624.17	\$950.28	\$1,515.42	\$2,475.84	\$3,000.84	\$4,921.68	\$5,071.68	\$9,813.36	\$10,126.80	\$16,288.80
	% from GRU	65%	58%	66%	67%	75%	71%	66%	65%	39%	46%	56%	62%	61%
4	Tallahassee	114,000	\$76.25	\$143.59	\$752.14	\$1,104.32	\$1,791.37	\$2,700.67	\$3,523.42	\$5,342.02	\$6,987.52	\$10,624.72	\$11,559.32	\$17,574.32
	% from GRU	78%	70%	37%	43%	48%	57%	41%	52%	19%	35%	37%	50%	47%
5	Gainesville WITH 10% INC From 2013	92,000	\$136.68	\$244.75	\$1,033.45	\$1,584.00	\$2,651.08	\$4,236.38	\$4,972.11	\$8,142.75	\$8,313.69	\$14,349.83	\$15,803.70	\$26,372.50
6	Ocala	50,000	\$94.07	\$175.92	\$710.01	\$1,100.55	\$1,738.35	\$2,953.50	\$3,519.75	\$5,920.08	\$7,015.05	\$11,815.65	\$12,050.45	\$19,951.45
	% from GRU	45%	39%	46%	44%	53%	43%	41%	38%	19%	21%	31%	32%	38%
	Average per usage class	55%	48%	52%	51%	55%	54%	47%	49%	24%	32%	41%	46%	46%
7	FPL	75.73	144.35	648.51	959.03	1593.33	2347.53	3168.03	4676.43	6317.43	9334.23	10667.91	15218.91	
	% from GRU	80%	70%	59%	65%	66%	80%	57%	74%	32%	54%	48%	73%	63%
8	Duke	92.1	172.62	621.31	972.89	1535.89	2648.44	3060.19	5285.79	6108.79	10558.99	10023.51	17366.06	
	% from GRU	48%	42%	66%	63%	73%	60%	62%	54%	36%	36%	58%	52%	54%
	AVERAGE OF FPL & DUKE	64%	56%	63%	64%	69%	70%	60%	64%	34%	45%	53%	63%	59%