

**Overlaying Significant  
Ecological Communities  
to properties in Buck  
Bay**

**42ZON-06PB**

# Highlights

- **8 subject properties 787 ac (city-initiated)**
- **Rated “high quality” in 2001**
- **On April 20, 2006, PB continued this: more info & ranking system needs explanation**
- **Are the properties worthy of overlay inclusion?**

# Highlights

- **32 properties have been submitted for consideration since July '05 (in addition to the subject properties)**
- **All have been subject to the same procedure: notice to property owners & those w/in 400 ft, ad, posting**
- **Subject property owners sent letter April '06 & April '07**

**Remove 7965-002 (Buck Bay).  
Now under dvlpmt plan. Also,  
remove 6415-001 (Rock Ck). It  
is now developed.**

**7877**



**7877-001-004**

**7966-010**



**US 441**

53<sup>rd</sup> Ave

**NW 53<sup>rd</sup> Ave**

**7966-010-002**



**8159**

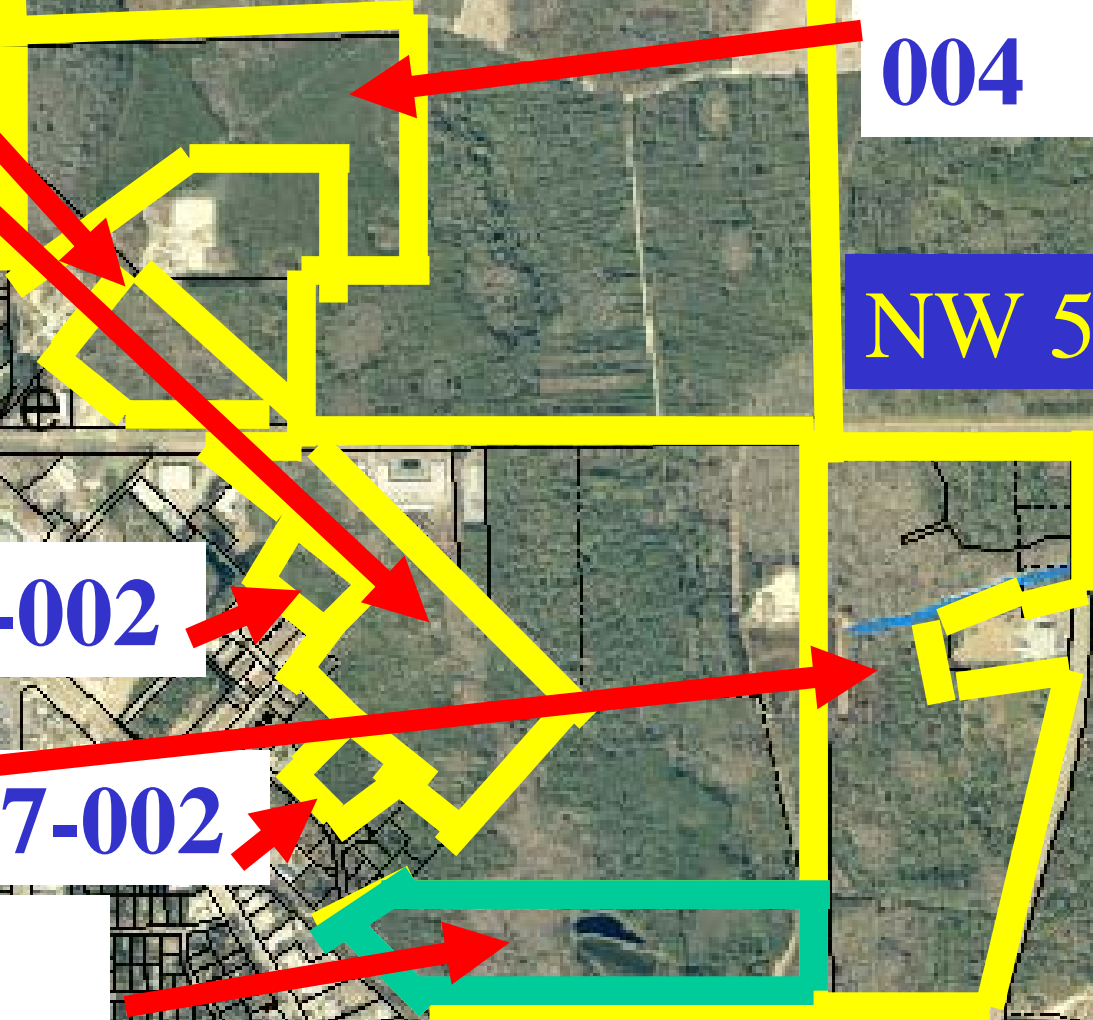
**7967-002**



**7965-002**



**N Main St**



An aerial photograph of a residential area with property boundaries overlaid in black. A specific parcel is highlighted with a thick green rectangular border. A blue line representing a stream or creek flows through the upper right portion of the map. Several text labels are overlaid on the map: a white box with blue text '6415-001' on the left, a blue box with yellow text 'NW 21st Ave' at the bottom center, and a vertical blue box with yellow text 'NW 34th St' on the right side. The background shows a mix of green trees and brownish ground, possibly a construction site or cleared area.

**6415-001**

**NW 21<sup>st</sup> Ave**

**NW 34<sup>th</sup> St**

# Criteria for Exclusion

- **Rarity or exemplary;**
- **Vulnerability;**
- **High water quality (either through recharge, surface waters or wetlands);**
- **Connectedness;**
- **Viability (with most ecological processes intact)**
- **Manageability; &**
- **Nature-oriented human use potential.**

**Owner must rebut this presumption by demonstrating at least 4 of these do not exist.**

**Adopt Significant Ecological Communities  
Overlay for Subject Properties  
Except 7965-002, 6415-001**