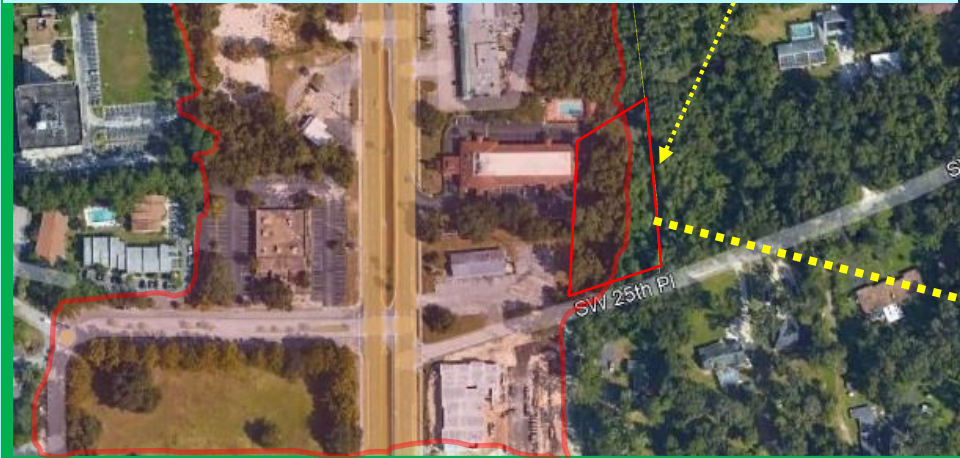




City of Gainesville

City Plan Board Meeting: April 21, 2022

Petition PB-21-00159 LUC, EDA Consultants, Inc., Agent for Robinson Mark A. And Lori A. request to amend the City of Gainesville Future Land Use Map from Single Family Residential to Urban Mixed Use (60 units per acre). Located in the 1200 Block of SW 25th. Place, 350 feet east of SW 13th. Street.



What's happening in the area:

- We are seeing the results of Transect Land Use and Zoning policies take shape:*
- : “.... A major feature of transect planning is that it incorporates a variety of residential and commercial spaces into a single neighborhood (mix-use)”.*

CRITERIA FOR REVIEW OF LAND USE CHANGE

9. Discouragement of urban sprawl as defined in Section 163.3164, F.S., and consistent with the requirements of Subsection 163.3177 (6)9, F.S.
10. Need for job creation, capital investment, and economic development to strengthen and diversify the City's economy
11. Need to modify land use categories and development patterns within antiquated subdivisions as defined in Section 163.3164, F.S.





City of

Gainesville

*City Commission Meeting:
April 21, 2022*

Petition PB-21-00159 LUC. EDA

Consultants, Inc., Agent for Robinson Mark A. And Lori A. request to amend the City of Gainesville Future Land Use Map from Single Family Residential to Urban Mixed Use (60 units per acre). Located in the 1200 Block of SW 25th. Place, 350 feet east of SW 13th. Street. Related to Petition PB-21-158

Legistar # 210571

Department of Sustainable Development

Prepared by Lawrence Calderon

Staff finds that the request satisfies the criteria for a Land Use Change

Staff's Recommendation.

Approve Petition PB-21-159 LUC, forwarding a recommendation of approval to the City Commission.

A lush green forest scene with a stream and reeds. The text "THE END" is overlaid in the center in a blue, outlined font. The background is filled with dense green foliage, including tall reeds and various trees. A stream flows through the center, with a fallen log visible in the foreground. The overall atmosphere is serene and natural.

THE END

