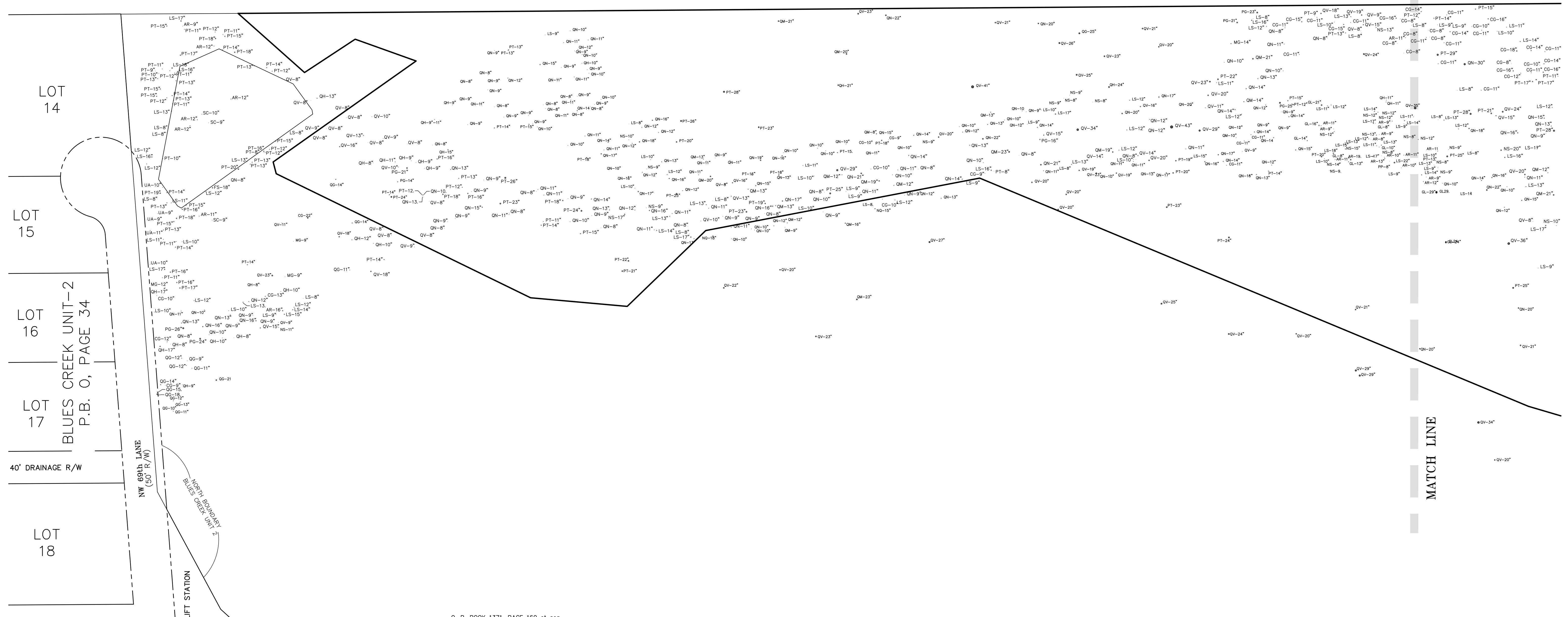


# TREE EXHIBIT

"THIS IS NOT A SURVEY"

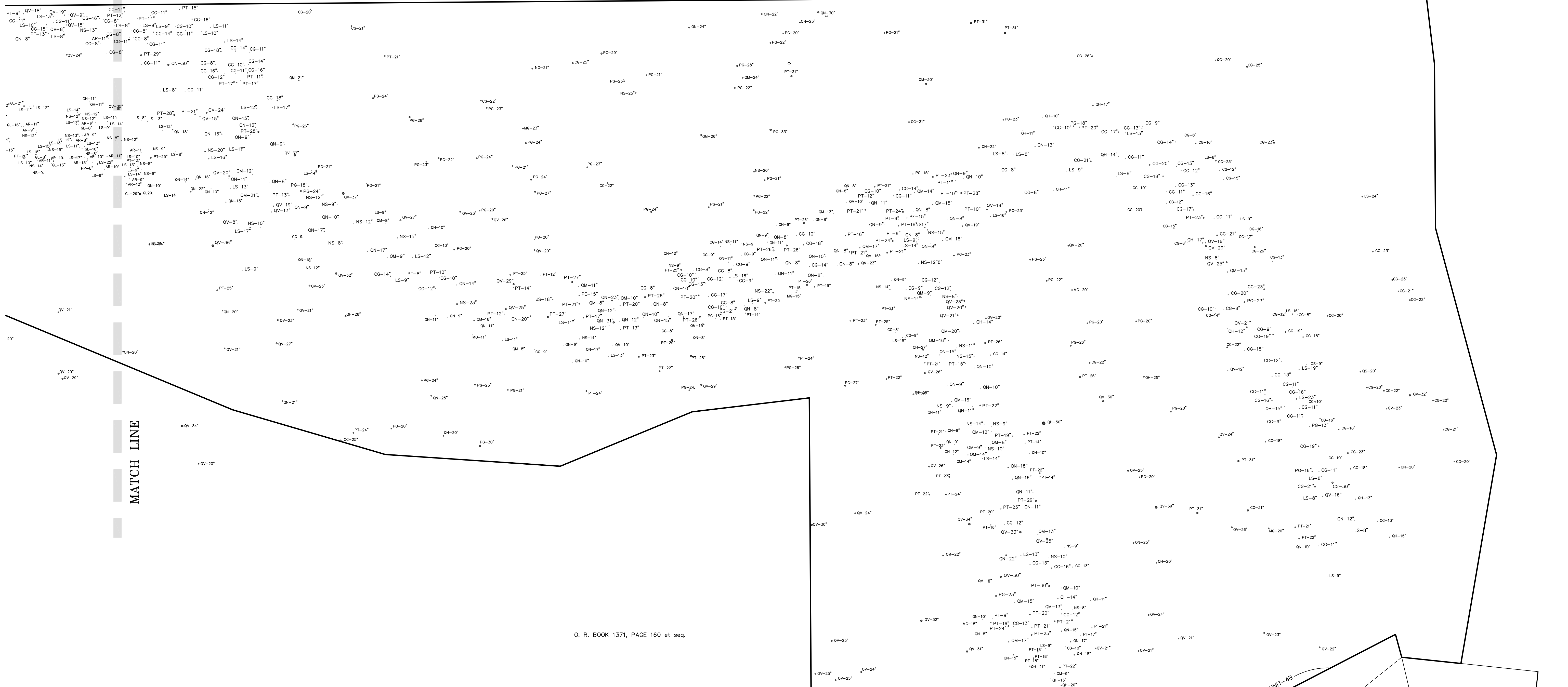
UNPLATTED LANDS



O. R. BOOK 1371, PAGE 160 et seq.

TREE LEGEND				
Abbreviation / Common Name / Genus-Species				
Trunk diameter (in inches)	AR = Red Maple	Acer rubrum	PP = Swamp Bay	Persea palustris
Tree location (Genus/species abbreviation)	CG = Pignut Hickory	Carya glabra	PT = Loblolly Pine	Pinus taeda
Multiple Trunk Diameters (in inches)	FS = Ash	Fraxinus spp.	QG = Sand Live Oak	Quercus geminata
	GP = Loblolly Bay	Gordonia lasianthus	QH = Laurel Oak	Quercus hemisphaerica
	LS = Southern Redcedar	Juniperus silicicola	QM = Swamp Chestnut Oak	Quercus michauxii
	MG = Sweet Gum	Liquidambar styraciflua	QN = Water Oak	Quercus nigra
	NS = Magnolia	Magnolia grandiflora	QS = Oak Family	Quercus spp.
	PE = Black Gum	Nyssa sylvatica	QV = Live Oak	Quercus virginiana
	PG = Slash Pine	Pinus elliottii	SC = Willow	Salix caroliniana
		Pinus glabra	UA = Winged Elm	Ulmus alata

UNPLATTED LANDS

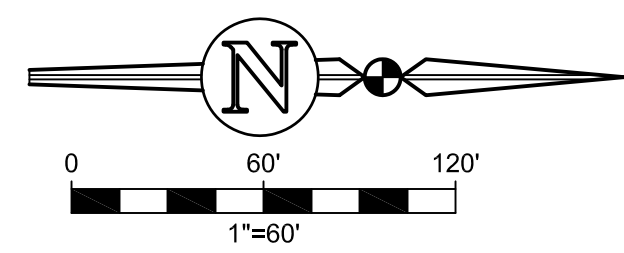


### TREE EXHIBIT

"THIS IS NOT A SURVEY"

O. R. BOOK 1371, PAGE 160 et seq.

TREE LEGEND				
Trunk diameter (in inches)	Abbreviation / Common Name	Genus-Species	Genus-Species	
0-20"	AR = Red Maple	Acer rubrum	FP = Swamp Bay	Persea palustris
21-30"	CG = Pignut Hickory	Carya glabra	PT = Loblolly Pine	Pinus taeda
31-40"	FS = Ash	Fraxinus spp.	QO = Sand Live Oak	Quercus geminata
41-50"	GP = Loblolly Bay	Gordonia lasianthus	QH = Laurel Oak	Quercus hemispherica
51-60"	JS = Souther Redcedar	Juniperus silicicola	QM = Swamp Chestnut Oak	Quercus michauxii
61-70"	LS = Sweet Gum	Liquidambar styraciflua	QW = Water Oak	Quercus nigra
71-80"	MG = Magnolia	Magnolia grandiflora	QS = Oak Family	Quercus spp.
81-90"	NS = Black Gum	Nyssa sylvatica	QV = Live Oak	Quercus virginiana
91-100"	PE = Slash Pine	Pinus elliottii	SC = Willow	Salix caroliniana
101-110"	PG = Spruce Pine	Pinus glabra	UA = Winged Elm	Ulmus alata



PLATTED AS LOT 23  
OF BLUES CREEK UNIT-4  
P.B. S, PAGE 3  
SHOWN AS "UNPLATTED LANDS" ON  
BLUES CREEK UNIT 4-B,  
P.B. S, PAGE 86,

BLUES CREEK UNIT-4  
P.B. S, PAGE 3 &  
BLUES CREEK UNIT-4B  
P.B. S, PAGE 86

Plotted Aug 22, 2016 - 13:57:03 - aboonie

\\server3\survey\Projects\2015-2016-0146 (BluesCreek)\DWG\BLUECRK100.dwg - Major Tree Groupings Sheet2