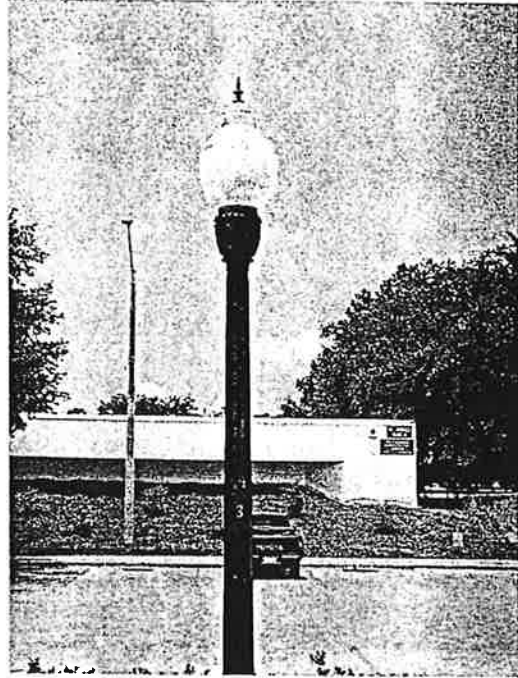
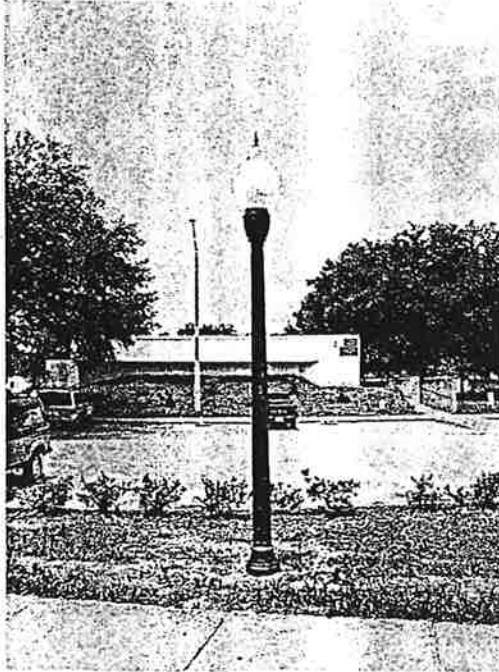


Submitted by BSAK

Location 3 – Holophane Washington Post with Black Fluted Victorian Pole

#991052



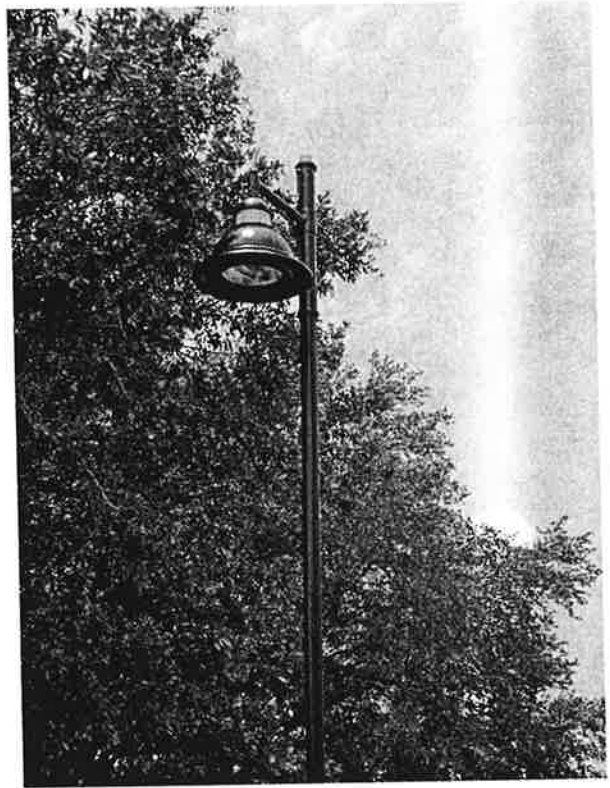
Cost / Pole	Cost / Luminaire	Total	Standard Monthly Cost	Agency Monthly Cost
\$516	\$670	\$1186	\$32	\$11

Location 5 - Lumec Washington Globe with Black Fluted Victorian Pole



Cost / Pole	Cost / Luminaire	Total	Standard Monthly Cost	Agency Monthly Cost
\$516	\$525	\$1041	\$31	\$11

Location 2 - Lumec Domus with 18 Foot Round Steel Pole

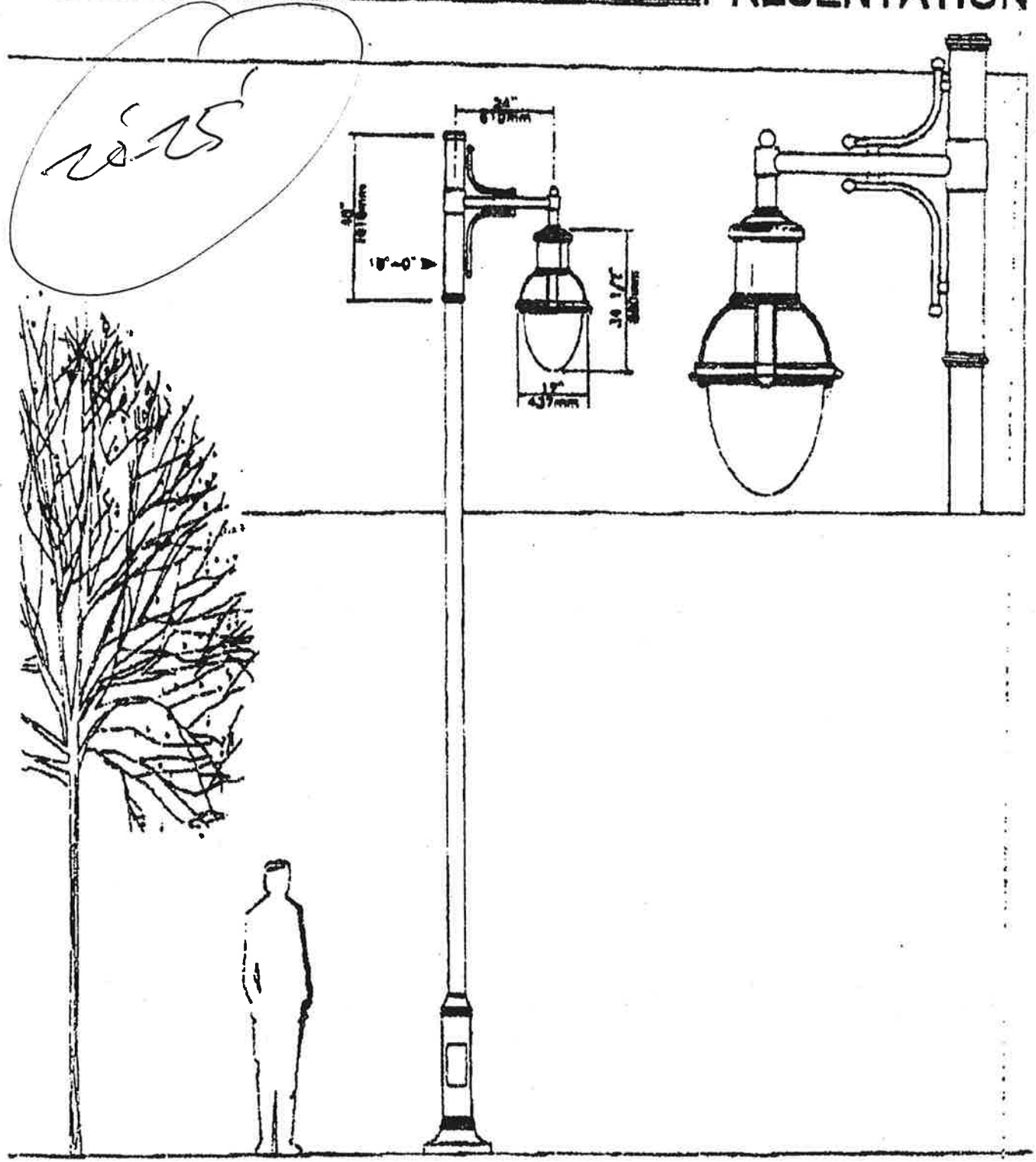


Cost / Pole	Cost / Luminaire	Total	Standard Monthly Cost	Agency Monthly Cost
—	—	\$1705	\$38	\$11

LUMEC

845 West Gate Blvd.
Baltimore, MD, Canada J7G 2A7
Tel: (416) 455-7948 Fax: (416) 455-1199

PRESENTATION



City of Gainesville

RN20

3/8" = 1'-0"

RN20 32478A

ENCLOSURE 09-25-01
 REGISTERED
 100 0507
 TV