

LEGISLATIVE #

110046H



Planning and Development Services

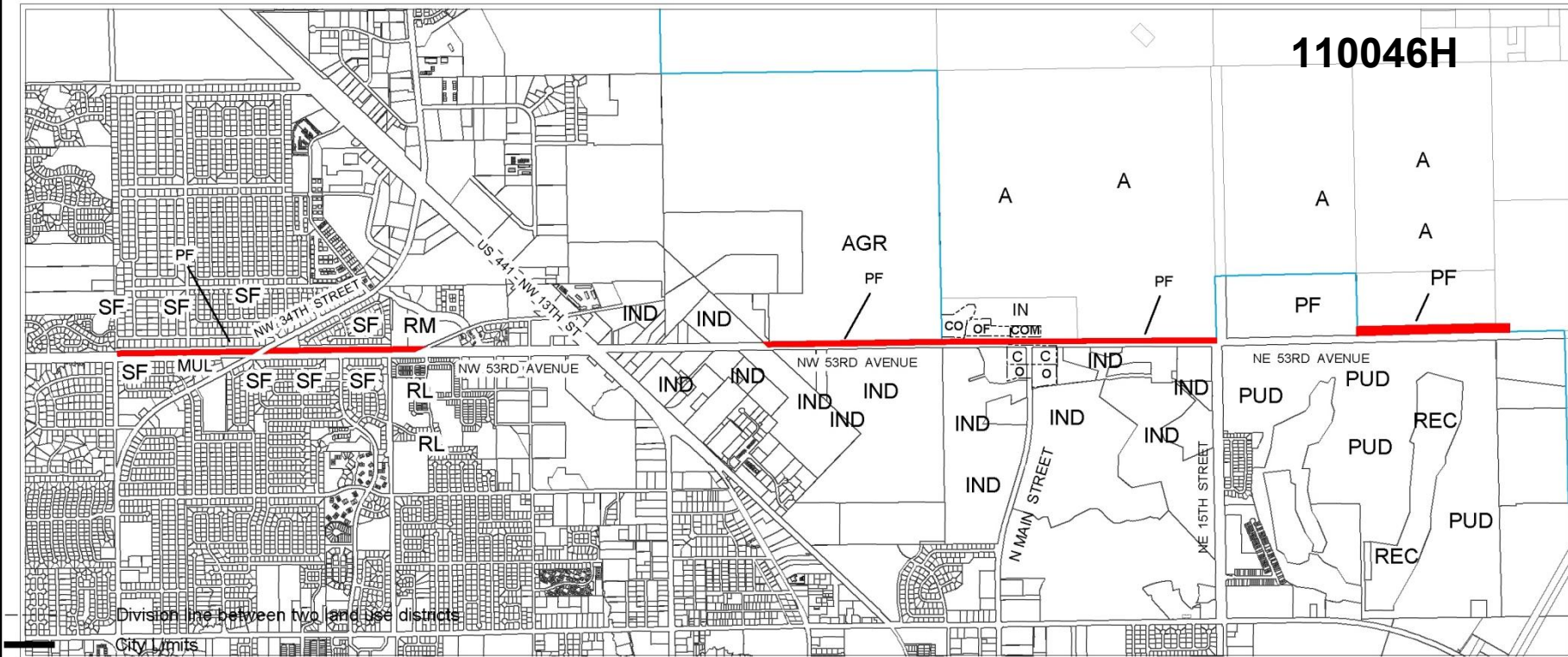
PB-11-29LUC Ordinance 110046

Land use change to Public Facilities

October 20, 2011

- **Petition changes GRU-owned land slivers along N 53rd Avenue**
 - **From Undesignated & AC Rural/Agriculture**
 - **To City Public Facilities land use category**

110046H



**City of Gainesville
Land Use Designations**

SF Single Family (up to 8 du/acre)
 RL Residential Low Density (up to 12 du/acre)
 RM Residential Medium Density (8-30 du/acre)
 RH Residential High Density (8-100 du/acre)
 MUR Mixed Use Residential (up to 75 du/acre)
 MUL Mixed Use Low Intensity (8-30 du/acre)
 MUM Mixed Use Medium Intensity (12-30 du/acre)
 MUH Mixed Use High Intensity (up to 150 du/acre)
 UMU1 Urban Mixed Use 1 (up to 75 du/acre)
 UMU2 Urban Mixed Use 2 (up to 100 du/acre)
 O Office
 C Commercial
 IND Industrial
 E Education

E Education
 REC Recreation
 CON Conservation
 AGR Agriculture
 PF Public Facilities
 PUD Planned Use District

PROPOSED LAND USE

**Alachua County
Land Use Designations**

A Rural/Agriculture
 CO Conservation
 OF Office
 COM Commercial
 IN Industrial/Manufacturing

Area
 under petition
 consideration



No Scale

Petition Number

PB-11-29 LUC

Parcel Number(s)

07871-000-000
 07874-001-001

Petition Request

Change FLUM from Alachua County
 Rural/Agriculture and undesignated
 to City of Gainesville Public Facilities
 district (PF).

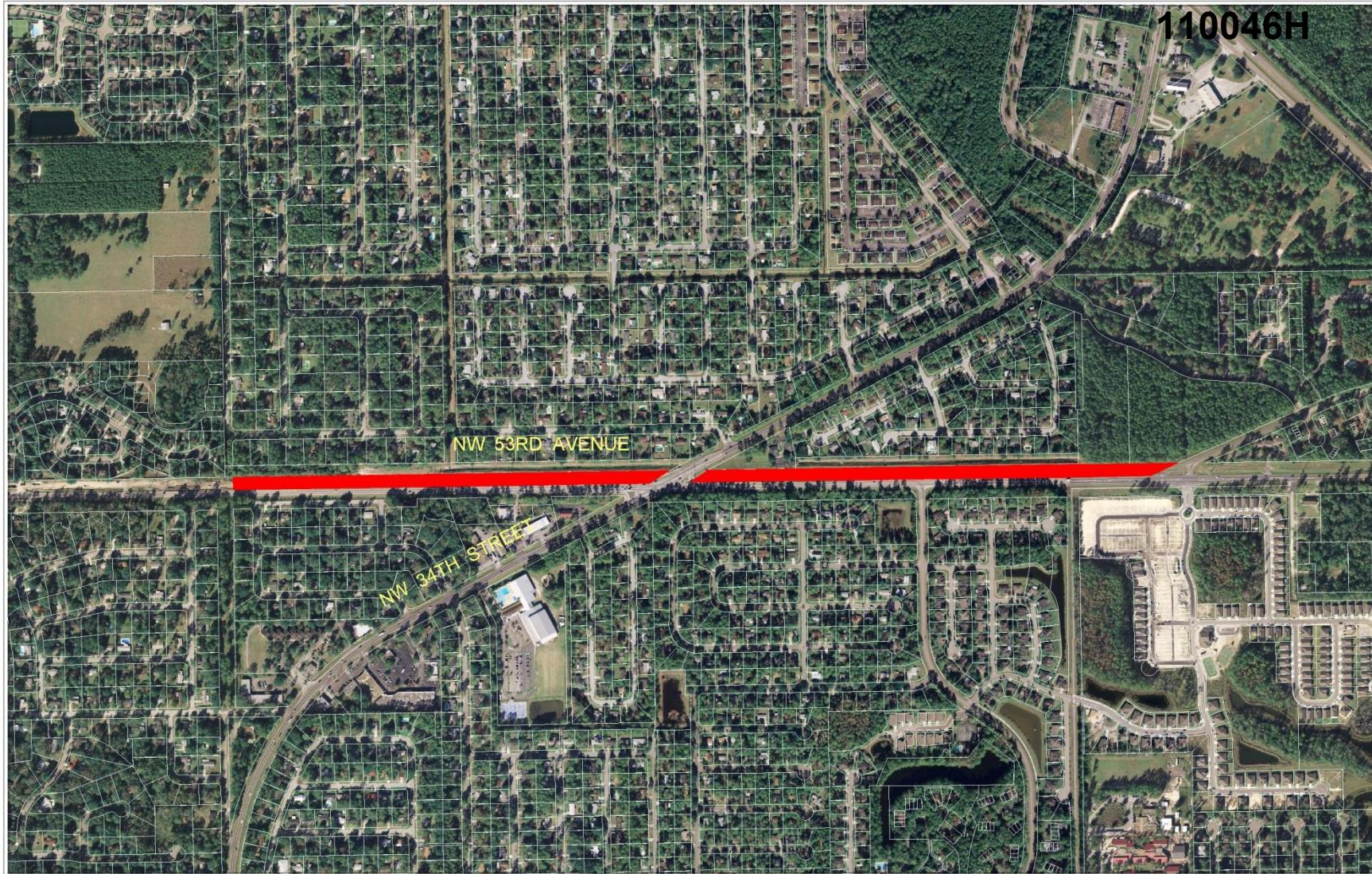
Prepared by: Planning and Development
 Services Department
 City of Gainesville, Florida
 5.10.2011

110046H




110046H





AERIAL PHOTOGRAPH

	Name	Petition Request	Map(s)	Petition Number
	City of Gainesville, applicant	Change FLUM from City of Gainesville undesignated category to Public Services and Operations (PF) category. Rezone from City of Gainesville undesignated district to Public Services and Operations (PS) district.	3252, 3253, 3255	PB-11-29 LUC PB-11-30 PSZ

Request Summary

110046H

	Current Alachua County	Proposed City of Gainesville
Eastern Parcel	Rural/Agriculture land use; Agricultural (A) zoning	Public Facilities land use; PS: Public services and operations zoning
Western Parcel	Undesignated	

- **Approve Petition PB-11-29LUC**

Plan Board vote (5/26/11): Approve 6-0

- **Approve Ordinance 110046 on first reading for transmittal to the State Land Planning Agency**