



# City Commission Update

August 21, 2014



# Success Stories: July 2014

- ▶ Three residents hired to help with fundraising program. Two currently working 40 hours/week as facilities staff. One now serves as Facilities Supervisor, has his own car, and lives in an apartment
- ▶ At least 8 veterans have been linked to housing supports needed to allow them to move out of outdoor pavilion and into housing of their own
- ▶ Six additional individuals moved from GRACE into their own housing; at least 3 others have secured housing but have not moved in yet
- ▶ 70% of recurring volunteer shifts filled by individuals receiving services at GRACE Marketplace
- ▶ Two part-time staff members hired through State Senior Employment Program
- ▶ "I think over the last few months we've definitely seen a marked decrease [in the homeless population around Bo Diddley Plaza]."
  - ▶ Emiliano's owner Diego Ibanez, speaking to TV20 July 25, 2014

# July 2014 Overview

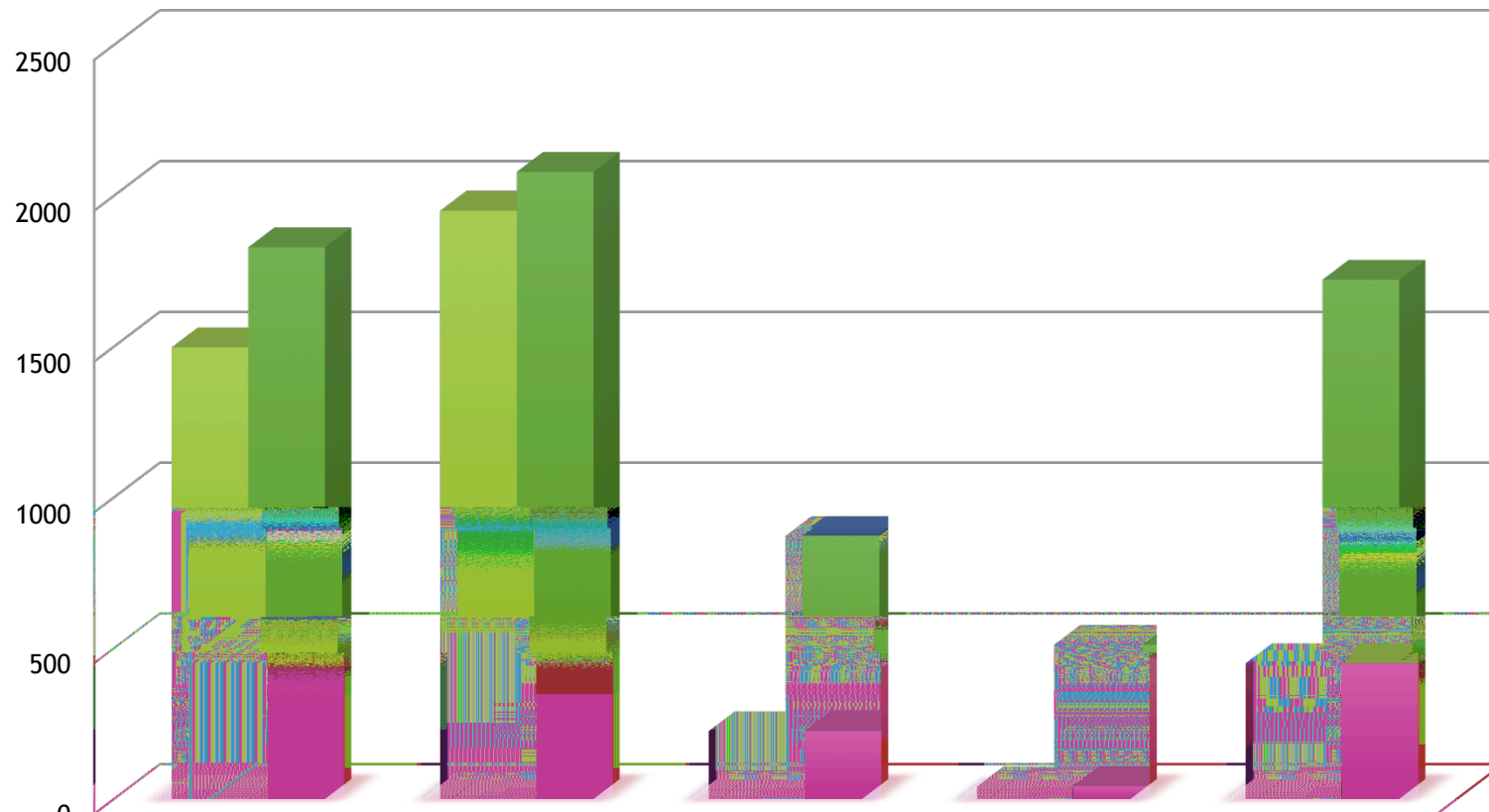
- ▶ We are currently meeting all contractual requirements for service provision at GRACE Marketplace
- ▶ Per service agreement, following services are available:
  - ▶ Restrooms and showers
  - ▶ 2 meals a day
  - ▶ Emergency shelter (outdoor pavilion)
  - ▶ Mail/telephone/Computer access
  - ▶ Day services
  - ▶ Meeting space for outside agencies
  - ▶ Storage of personal belongings

# July 2014 Overview

- ▶ Since last update to the Commission, services expanded to include:
  - ▶ Computer lab access
  - ▶ Clothes closet
  - ▶ GED classes begin August 25, 2014



# Services Provided, June-July 2014



	<b>BREAKFAST</b>	<b>DINNER</b>	<b>SHELTER</b>	<b>SHOWERS</b>	<b>DAY SERVICES</b>
<b>JUNE 2014</b>	<b>1497</b>	<b>1950</b>	<b>225</b>	<b>42</b>	<b>450</b>
<b>JULY 2014</b>	<b>1829</b>	<b>2079</b>	<b>872</b>	<b>511</b>	<b>1721</b>

## Next steps

- ▶ Indoor emergency shelter will open Wednesday, September 16 in Dorm A
- ▶ Shelter will initially house 10 men and 10 women
- ▶ Priority given to individuals who lived and worked in Alachua County prior to becoming homeless

# Issues and Concerns

- ▶ Need to gain control over woods surrounding City property
  - ▶ Currently, GRACE program staff unable to control who is/is not allowed in woods surrounding Grace
  - ▶ Tacachale staff evicted 15-20 campers from nearby woods in July
  - ▶ We cannot trespass one person without risking trespass of all campers
- ▶ Delayed payment for services
  - ▶ \$12,000 outstanding payment for Cold Night Shelter
  - ▶ Current contract payments occur 30 days after submission of invoice, will create cash flow issues in March/April 2015
- ▶ We need a governance board. We cannot continue to delay major decisions.