



GAINESVILLE REGIONAL UTILITIES

RENOVATION TO EXISTING BUILDING FOR THE NEW DOWNTOWN ELECTRICAL SUBSTATION RADIO EQUIPMENT BUILDING

301/305 SOUTH WEST 5TH AVENUE
GAINESVILLE, ALACHUA COUNTY, FLORIDA

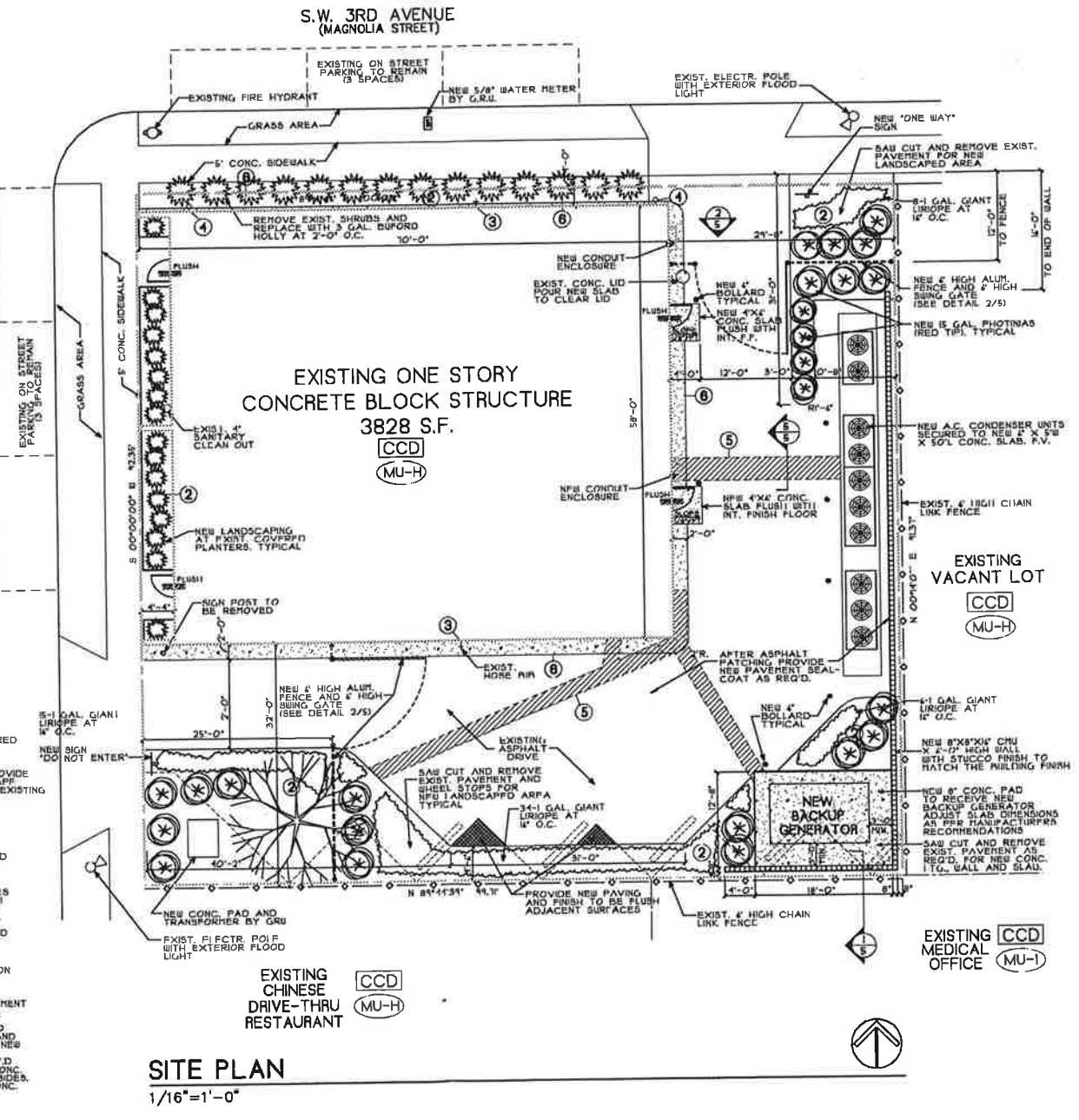
GENERAL NOTES

- BUILDING DIVISION REQUIRED DATA:**
- | | EXISTING | REMOVE | ADD | FINAL | % |
|----------|----------|--------|------|-------|------|
| BUILDING | 3,828 | 0 | 0 | 3,828 | 41% |
| PAVING | 4,889 | 796 | 0 | 3,873 | 42% |
| PERVIOUS | 753 | 0 | 796 | 1,549 | 17% |
| TOTAL | 9,250 | -796 | +796 | 9,250 | 100% |
- SITE AREAS (IN SQ. FT.): 9,250 S.F. TOTAL
TAX PARCEL #: 13488-000-000
 - TYPE OF CONSTRUCTION (PER CHAPTER 6 OF THE S.B.C.): TYPE IV PROJECTED.
 - OCCUPANCY CLASS (PER CHAPTER 3 OF THE S.B.C.): STORAGE
 - THE SITE IS NOT IN A HISTORIC PRESERVATION DISTRICT.
 - THE SITE IS NOT IN A FLOOD PLAIN.
 - THE BUILDING AND SITE IMPROVEMENTS WILL COMPLY WITH THE STATE OF FLORIDA ACCESSIBILITY CODES AND STANDARDS.
- SITE DATA:**
- PROJECT DESCRIPTION: RENOVATION OF AN EXISTING BUILDING IS CONSIDERED AN UNINHABITED STRUCTURE UNDER THE PURPOSE OF STORAGE AND PROTECTION OF ELECTRONIC COMMUNICATIONS EQUIPMENT. IT HAS BEEN DETERMINED BY THE STATE OF FLORIDA DEPARTMENT OF COMMUNITY AFFAIRS AND THE CITY OF GAINESVILLE, FLORIDA BUILDING OFFICIAL THAT AN UNINHABITED STRUCTURE AND SPACE ARE NOT SUBJECT TO THE REQUIREMENTS AS SET FORTH IN THE FLORIDA ACCESSIBILITY CODE FOR BUILDING CONSTRUCTION. THIS PROJECT ALSO INCLUDES BUILDING FACADE AND LANDSCAPE IMPROVEMENTS.
 - SITE ZONING: CCD. THE CCD DISTRICT PERMITS USE BY RIGHT
 - LAND USE: MU-H
 - PROPERTY OWNER: GAINESVILLE REGIONAL UTILITIES
CONTACT: MARK SPILLER
(352) 334-3400 EXT-1293
 - UTILITIES: EXISTING UTILITIES TO REMAIN. SEE SITE PLAN FOR LOCATIONS.
 - A NEW FIRE SUPPRESSION SYSTEM (MODEL FM 200) WILL BE INSTALLED. IT IS A CLEAN, DRY, NON-CORROSIVE, NON-DAMAGING, NON-DETERIORATING GAS MEETING THE REQUIREMENTS OF NFPA 909. IT HAS NO WATER CONNECTION.
 - EXISTING SITE LIGHTING TO BE REMOVED.
 - CURB SIDE GARBAGE PICKUP TO BE PROVIDED.
 - STORMWATER: NO RETENTION AREAS ARE REQUIRED.
 - EXISTING PARKING WILL BE MODIFIED TO IMPROVE THE EXISTING DRIVE IN ENTRANCE AND EXIT AND PROVIDE ADDITIONAL LANDSCAPING AND SOUND ATTENUATION FROM THE NEW BACK UP GENERATOR TO BE INSTALLED.

TITLE DESCRIPTION:
LOT 13 AND PART OF LOT 10 OF F. X. MILLER'S ADDITION TO GAINESVILLE AS SHOWN IN PLAT BOOK "A" PAGE 20 MORE FULLY DESCRIBED AS FOLLOWS:
BEGIN AT THE NORTH WEST CORNER OF LOT 13, WHICH IS ON THE CORNER OF MAGNOLIA AND PORTER STREETS, RUN SOUTH ALONG THE WEST LINE OF LOT 13, 92.5 FEET, THENCE RUN EAST 100 FEET, THENCE RUN NORTH 92.5 TO MAGNOLIA STREET, THENCE RUN WEST ALONG THE NORTH LINE OF LOTS 10 AND 13, 100 FEET TO THE POINT OF BEGINNING. ALL LYING AND BEING IN THE CITY OF GAINESVILLE, IN SECTION 5, TOWNSHIP 16 SOUTH, RANGE 20 EAST, ALACHUA COUNTY, FLORIDA.

SITE NOTES:

- PROVIDE NEW FULLY ENGINEERED IRRIGATION SYSTEM
- CONTRACTOR TO DESIGN, PROVIDE AND INSTALL A NEW LANDSCAPE IRRIGATION SYSTEM REMOVE EXISTING SYSTEM AS REQUIRED.
- ADJUST NEW HOSE BIB TO CLEAR NEW EXTERIOR WALL FINISH.
- REMOVE EXIST. WALL MOUNTED LIGHT FIXTURE TYPICAL
- SAW CUT AND REMOVE PAVEMENT FOR NEW A.C. LINES OR ELECTR. CONDUIT (TRENCH) PATCH AND FINISH TO MATCH ADJACENT SURFACES. SEE ELECTRICAL AND MECHANICAL PLAND AND FIELD VERIFY LOCATIONS
- SAW CUT AND REMOVE PAVEMENT 1'-0" FROM EDGE OF BUILDING ON SOUTH AND EAST SIDES. EXCAVATE EXISTING DIRT TO FOOTINGS ON SOUTH EAST AND NORTH SIDES AND PROVIDE NEW WATERPROOFING, BACKFILL DIRT AND COMPACT AS REQ'D. POUR NEW 2'-0" WIDE X 4" CONC. CURB ON SOUTH AND EAST SIDES. POUR 2' SIDE X 10' DEEP CONC. CURB ON NORTH SIDE. SLOPE ALL CURB 1/2" FT.



SITE PLAN
1/16"=1'-0"

INDEX OF DRAWINGS

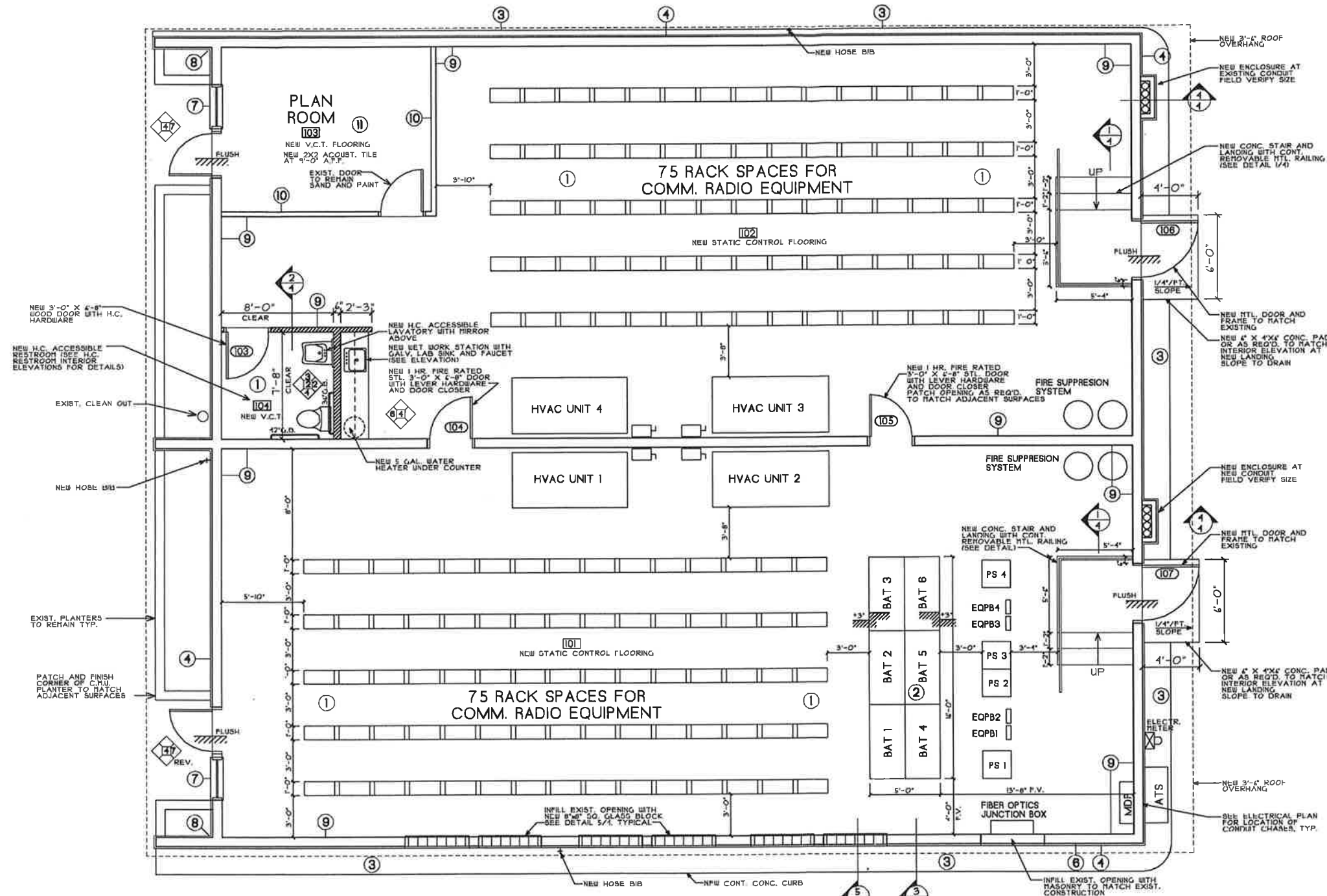
- SITE/LANDSCAPE PLAN
GENERAL NOTES
- EXISTING FLOOR PLAN WITH MODIFICATIONS
INTERIOR RESTROOM ELEVATIONS
- DEMOLITION PLAN
ROOF FRAMING PLAN
BUILDING ELEVATIONS
- BUILDING CONSTRUCTION DETAILS
WORKSTATION ELEVATION
- SITE CONSTRUCTION DETAILS
PLUMBING PLAN
PLUMBING RISER DIAGRAM

LANDSCAPE SCHEDULE

COMMON NAME	SCIENT. NAME	QUANTITY	SIZE
EAST PALATKA HOLLY	ILEX X ATTNATFD	1	25 GAL.
RED TIP	PHOTENIA	24	3 GAL.
BUFFORD HOLLY		28	3 GAL.
BUFFORD HOLLY		16	1 GAL.
GIANT LIRIOPE	ILEX VONITORIA NANA	11	1 GAL.

NOTES:
LANDSCAPE CONTRACTOR IS TO CALL THE CITY ARBORIST AT 334-7711 TO SCHEDULE INSPECTIONS PRIOR TO PURCHASING PLANT MATERIALS AND INSTALLATION.
ALL PLANT MATERIAL WILL BE FLORIDA GRADE #1 OR BETTER. PLANT TREES NO CLOSER THAN 5'-0" FROM THE EDGE OF THE PAVEMENT.
ALL NEW LANDSCAPED AREAS TO BE MULCHED WITH PINE BARK MULCH, MINIMUM OF 3" DEPTH.
HOSE BIBS WILL BE PROVIDED WITHIN 100' OF ALL LANDSCAPING AND NEW IRRIGATION SYSTEM WILL BE PROVIDED.

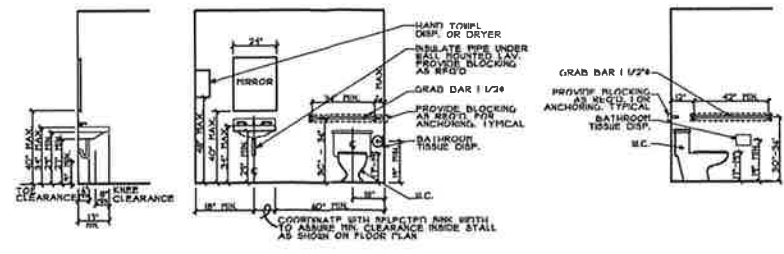
TREE PROTECTION:
TREE BARRICADES WILL BE BUILT BEFORE ANY SITEWORK IS UNDERTAKEN AND WILL REMAIN IN PLACE UNTIL THE LANDSCAPING IS PLANTED. EACH BARRICADE MUST ENCLOSE AN AREA EQUAL TO AT LEAST 2/3 THE DRIFLINE OF THE TREE CANOPY. THE BARRICADE MUST BE AT LEAST 3" TALL WITH CORNER POSTS OF 2"x4" WOOD INSETTED AT LEAST 1' DEEP. THE TWO SIDES OF SIDE SLATS MUST BE 1"x4" AND BE MARKED WITH PLASTIC RIBBONS OR FRESH FENCING FOR VISIBILITY. ROOTS LARGER THAN 1" IN DIAMETER UNCOVERED DURING CONSTRUCTION MUST BE CUT CLEAN AND RECOVERED WITH SOIL. NO CONSTRUCTION MATERIALS OR EQUIPMENT WILL BE PLACED INSIDE THE TREE BARRICADES.



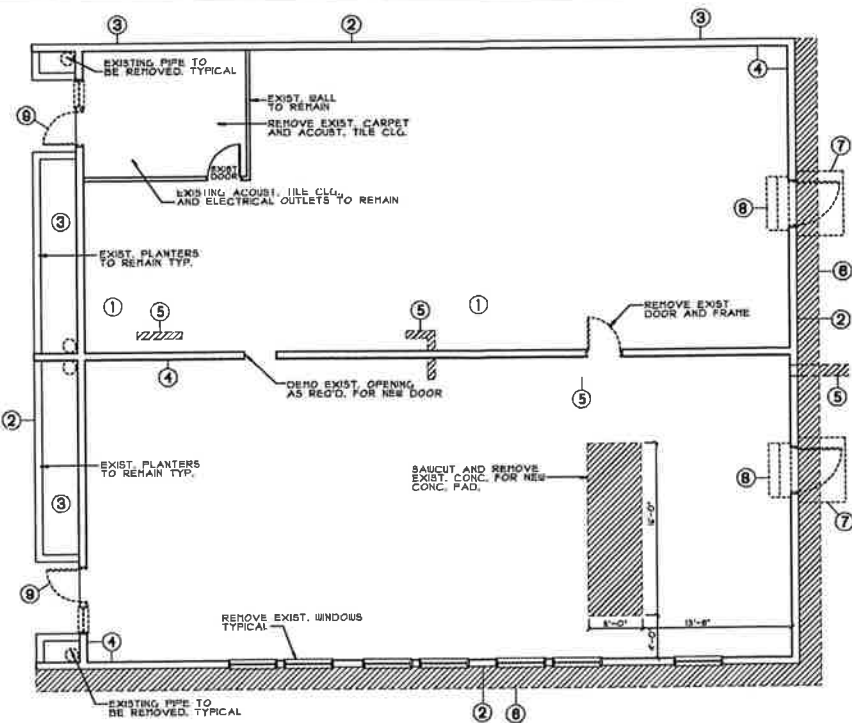
- NOTES:**
1. CHIP, PATCH AND GRIND EXIST. FLOOR TO ACHIEVE A LEVEL SMOOTH SURFACE AS REQ'D. FOR NEW STATIC CONTROL FLOORING. TYPICAL THROUGHOUT
 2. COMPACT SUBSTRATE UNDER NEW CONC. BATTERY PAD TO 100% PD. POUR NEW 5/8" X 1/4" X 10" DEEP CONC. SLAB WITH ACID RESISTANT CONCRETE. PROVIDE #4 REBAR AT 8" O.C. EACH BAY. TOP OF SLAB TO BE 3" ABOVE FINISH FLOOR. SLAB TO FLOAT INDEPENDENT FROM EXISTING CONC. FLOOR.
 3. SAW CUT AND REMOVE PAVEMENT 1'-8" FROM EDGE OF BUILDING ON SOUTH AND EAST WALLS. EXCAVATE EXISTING DIRT TO FOOTINGS ON SOUTH, EAST AND NORTH WALLS AND PROVIDE NEW WATERPROOFING. BACKFILL DIRT AND COMPACT AS REQ'D. POUR NEW 2'-0" WIDE X 4" CONC. CURB ON SOUTH AND EAST SIDES. POUR 6" WIDE X 10" DEEP CONC. CURB ON NORTH SIDE. SLOPE ALL CURBS 1/2"/FT.
 4. NEW SYNTHETIC STUCCO OVER 2" MIN. RIGID INSULATION ON ALL EXTERIOR WALLS. PROVIDE CONTROL JOINTS AND EXPANSION JOINTS AS PER MANFACT. RECOMMENDATIONS.
 5. CONNECT NEW PLUMBING FIXTURES TO EXIST. PLUMBING LINE
 6. INFILL ALL OPENINGS ON EXTERIOR WALLS WITH MASONRY AS REQ'D.
 7. REMOVE EXIST. STOREFRONT AND REPLACE WITH NEW STOREFRONT WITH SECURITY GLASS (SEE SPECS.). DOOR HARDWARE TO MEET ACCESSIBLE AND EMERGENCY EGRESS REQUIREMENTS
 8. REMOVE EXISTING VENTS AT WEST FACADE AND PATCH SOFFIT AS REQ'D.
 9. CLEAN AND PATCH WITH CHU/MORTAR CURRENT TO A SMOOTH SURFACE TO MATCH ADJACENT CONSTRUCTION AND PAINT ALL INTERIOR WALLS AND CEILING.
 10. EXTEND EXISTING WALLS TO EXISTING ROOF DECK ABOVE AS REQ'D. PATCH WALL AND SHOOT-FINISH TO MATCH ADJACENT SURFACES.
 11. EXISTING CEILING IN PLAN ROOM (103) TO REMAIN. PATCH AS REQUIRED.

- LEGEND**
- NEW 2X4 OR 2X6 STUDS AT 16" O.C. EXTERIOR WALL TO EXISTING ROOF DECK ABOVE.
 - EXISTING WALLS TO REMAIN

EXISTING FLOOR PLAN WITH MODIFICATIONS
 1/4" = 1'-0"



ALL SHOWN DIMENSIONS ARE TO FINISHED SURFACE
TYPICAL RESTROOM ELEVATIONS
 1/4" = 1'-0"



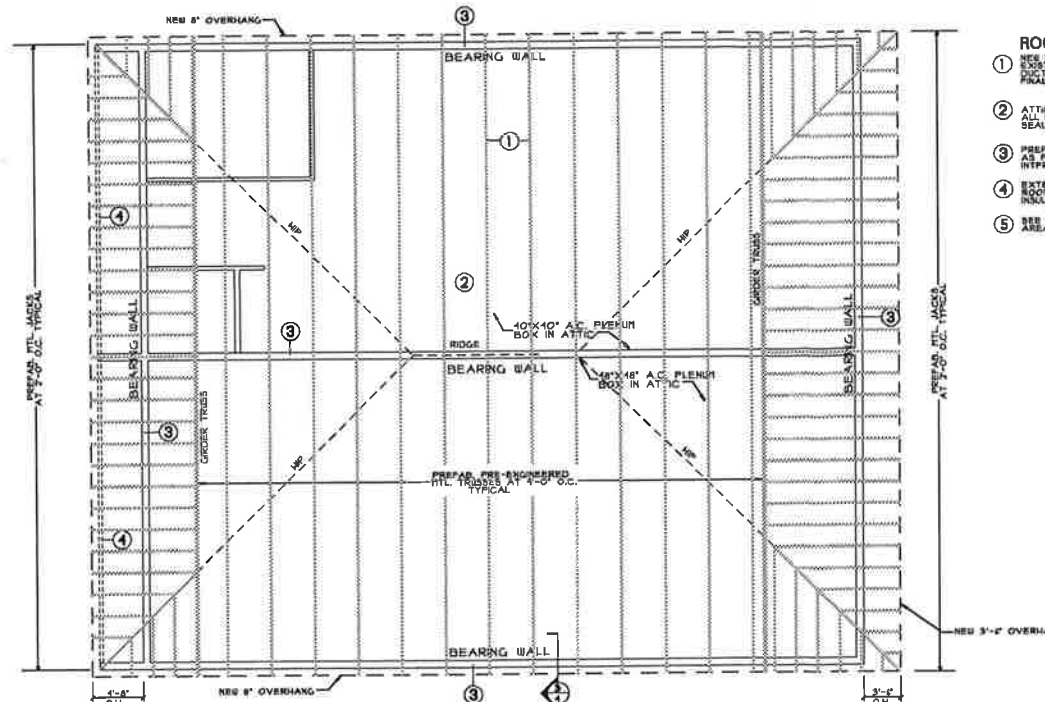
DEMOLITION PLAN
1/8"=1'-0"

DEMOLITION NOTES:

- 1 REMOVE EXISTING RESTROOM PLUMBING AND CAP LINES AND PATCH AS REQUIRED.
- 2 REMOVE EXIST. HORIZONTAL WOOD TRIM AND SUPPORTS OR EXTERIOR FASCIA AND PATCH AS REQUIRED.
- 3 REMOVE EXISTING EXTERIOR WALL AND SOFFIT HUNG LIGHT FIXTURES AND ANY OTHER ABANDONED FIXTURE.
- 4 REMOVE EXISTING 4" TOP MASONRY COURSE ABOVE THE BEAM AND REMOVE EXISTING BUILT-UP ROOF AS REQ'D. AT PERIMETER AND INTERMEDIATE BEARING WALLS TO ACCOMMODATE NEW CONC. ROOFED TIE-BEAM PATCH AS REQUIRED.
- 5 SAW CUT EXISTING SLAB AND PAVEMENT FOR NEW CONDUIT, PLUMBING, AND A.C. LINES PATCH AND FINISH TO MATCH ADJACENT SURFACES. COORDINATE BLDG. DEMO 5TH SITE PLAN DEMO. FIELD VERIFY LOCATIONS.
- 6 SAW CUT AND REMOVE 1'-8" WIDTH OF PAVEMENT AT SOUTH AND EAST WALLS. EXCAVATE DIRT TO FOOTING TO PROVIDE NEW WATERPROOFING.
- 7 REMOVE EXISTING DOOR FRAME, AND CANOPY AND PATCH AS REQ'D.
- 8 DEMO EXISTING CONC. STEPS AND LANDING AND PATCH AS REQ'D.
- 9 REMOVE EXIST. STOREFRONT, GLAZING AND DOOR
- 10 CUT LATERAL BRACING SUPPORTS BETWEEN EXISTING STL. COLS TO ACCOMMODATE NEW A.C. DUCTS AS REQ'D. PATCH AND FINISH TO MATCH ADJACENT SURFACES. COORDINATE BLDG. DEMO 5TH SITE PLAN DEMO. FIELD VERIFY LOCATIONS.
- 11 REMOVE EXISTING BUILT-UP ROOF AS REQ'D. USING APPROPRIATE CARE TO LEAVE TECTUM CEILING PROTECTED AND IN PLACE.
- 12 CUT OPENINGS IN TECTUM AT ALL PENETRATIONS WITH APPROPRIATE CARE. EXPOSED FINISHED EDGES TO BE STRAIGHT, CLEAN AND SEALED AROUND PENETRATING DUCTS.
- 13 REMOVE EXIST. HOSE BIBS AND CAP LINES AND ABANDON IN PLACE.
- 14 SEE SITE PLAN FOR EXTERIOR PAVEMENT DEMOLITION

LEGEND

- EXISTING WALLS TO BE REMOVED
- EXISTING WALLS TO REMAIN
- EXISTING AREA TO BE SAW CUT AND REMOVED

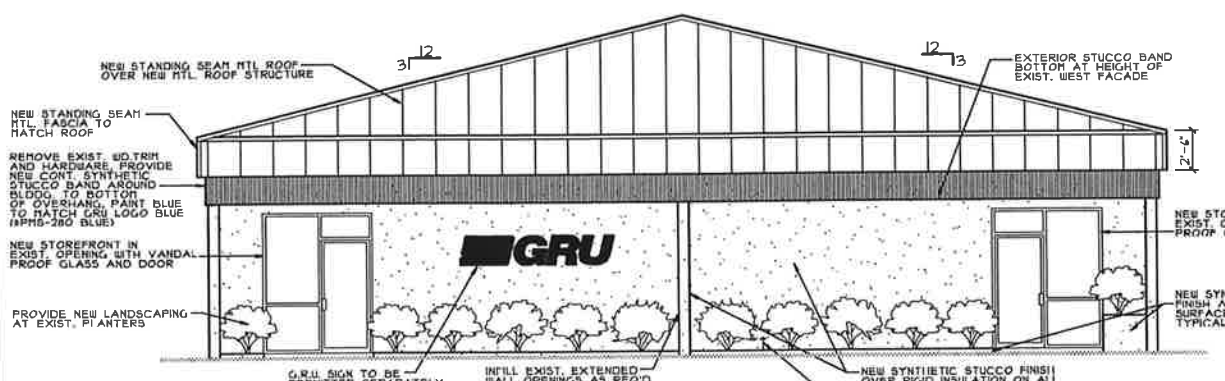


NEW ROOF FRAMING PLAN
1/8"=1'-0"

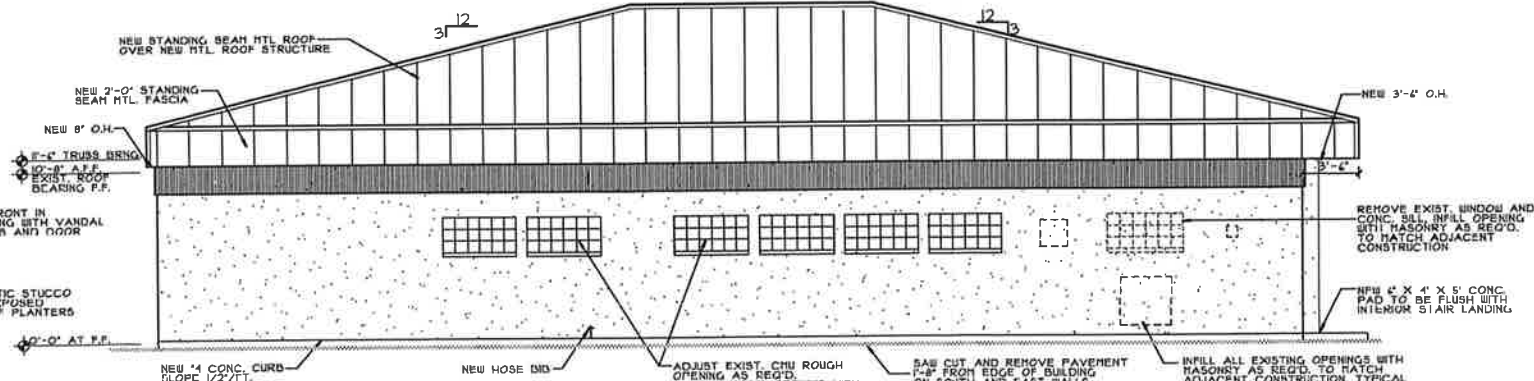
ROOF NOTES:

- 1 NEW ROOF TRUSSES TO BE INSTALLED DIRECTLY ABOVE EXISTING ROOF JOISTS TO ACCOMMODATE NEW STRUCTURE. CONTRACTOR TO FIELD COORDINATE FINAL LAYOUT.
- 2 ATTIC TO BE SEALED AS REQ'D. NO VENTS TO BE PROVIDED. ALL EXISTING TECTUM CEILING PENETRATIONS SHALL BE SEALED AS REQUIRED.
- 3 PREPARE TOP OF WALL AND POUR NEW CONT. TIE-BEAM AS PER DETAIL 5/4. COATING AND TIE NEW TIE-BEAM AT INTERIOR TRIFURCATION WALL.
- 4 EXTEND EXISTING WEST FACIA FASCIA TO BOTTOM OF NEW ROOF TRUSS WITH 2" STUCCO AT 2'-0" R.C. FINISH WITH ROOF INSULATION AND STUCCO TO MATCH ADJACENT SURFACES.
- 5 SEE DETAIL 4/5 FOR NEW LATERAL BRACING AT BARCUT AREAS OF EXISTING LATERAL ROOF BRACING.

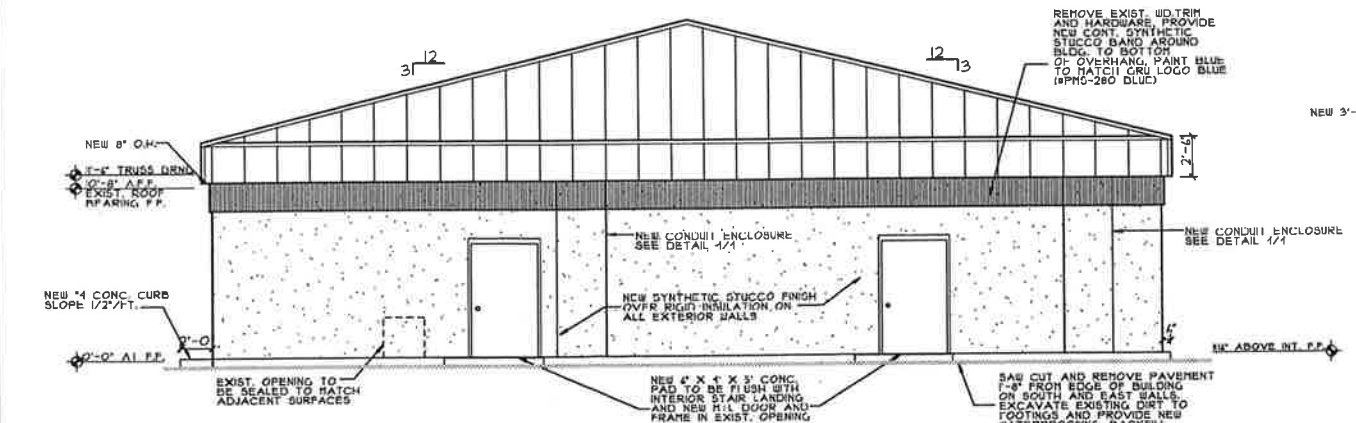
NOTE:
CONTRACTOR TO COORDINATE AND IMPLEMENT NEW MECHANICAL DUCT WORK WITH NEW METAL TRUSS LAYOUT AND CONFIGURATION.



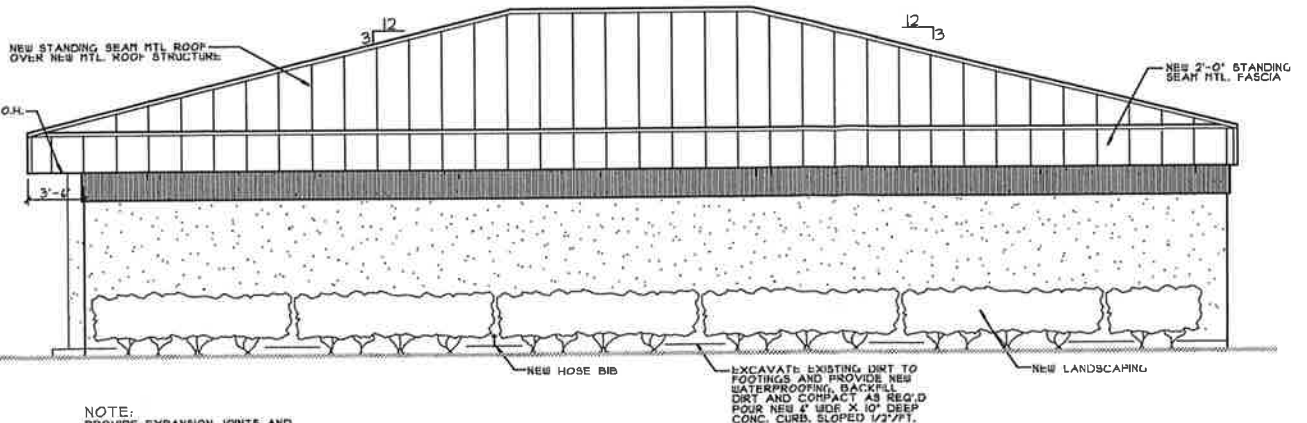
WEST ELEVATION
3/16"=1'-0"



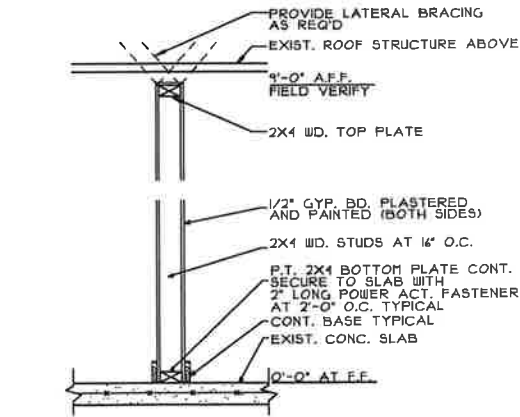
SOUTH ELEVATION
3/16"=1'-0"



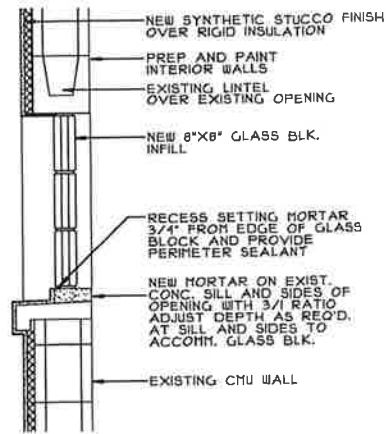
EAST ELEVATION
3/16"=1'-0"



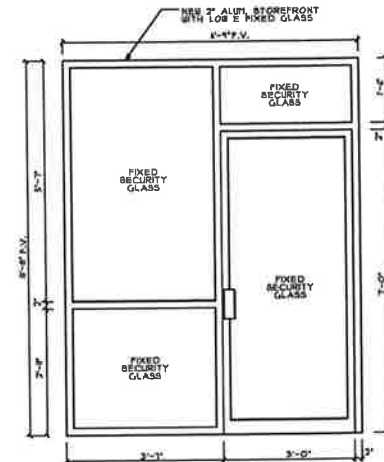
NORTH ELEVATION
3/16"=1'-0"



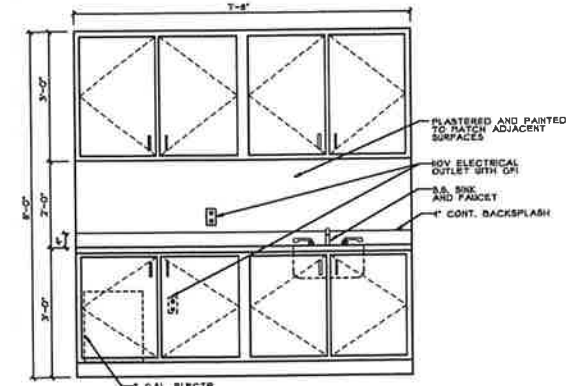
TYPICAL INTERIOR NONBEARING WALL SECTION
3/4"=1'-0"



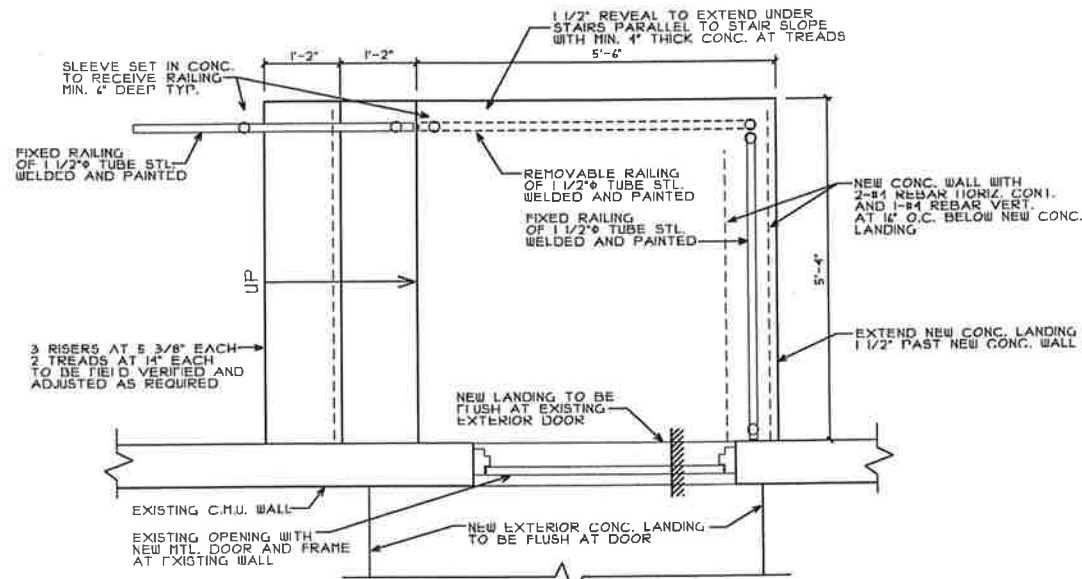
EXISTING WINDOW OPENING TYPICAL INFILL DETAIL
1"=1'-0"



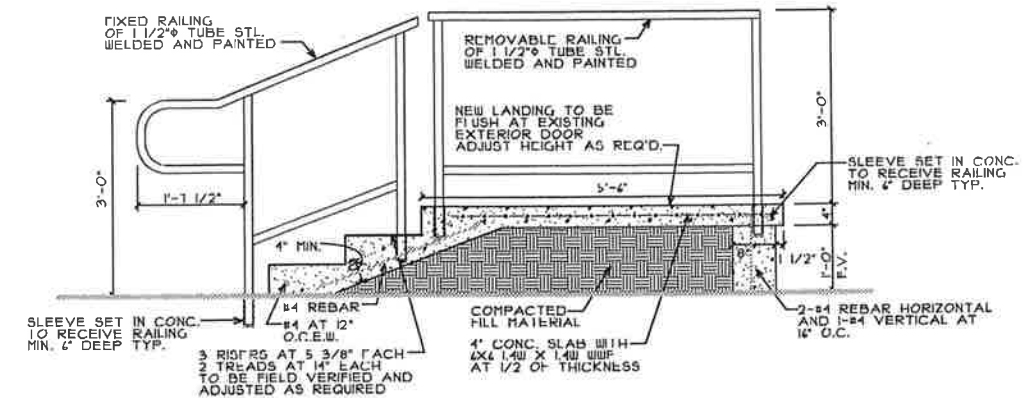
NEW STOREFRONT ELEVATION
1/2"=1'-0"



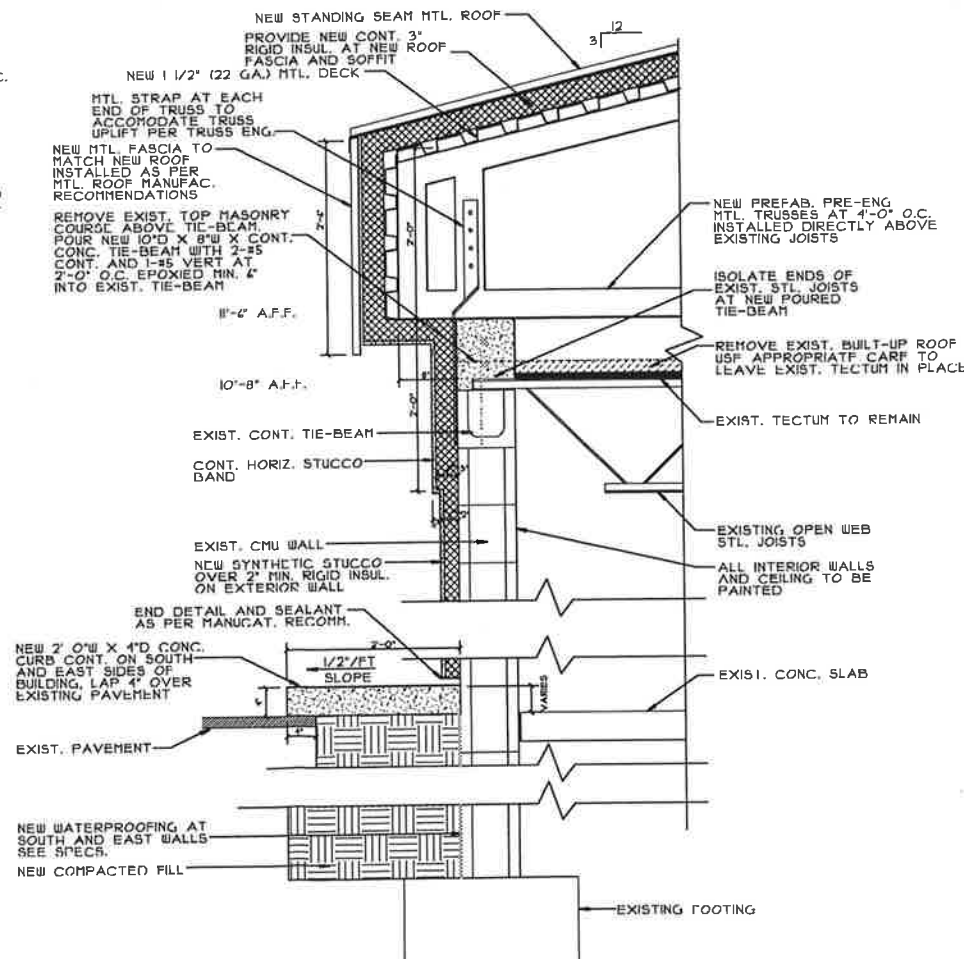
NEW WORK STATION ELEVATION
1/2"=1'-0"



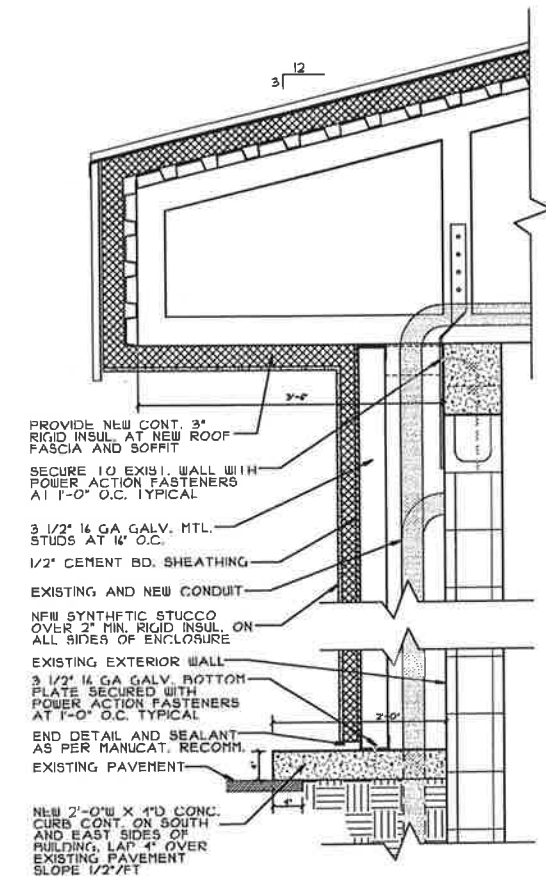
NEW CONCRETE STAIR PLAN
3/4"=1'-0"



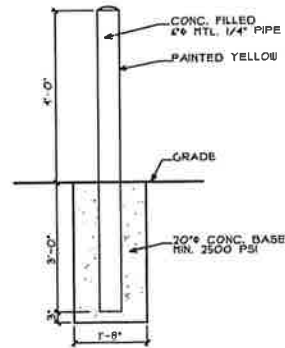
NEW CONCRETE STAIR SECTION
3/4"=1'-0"



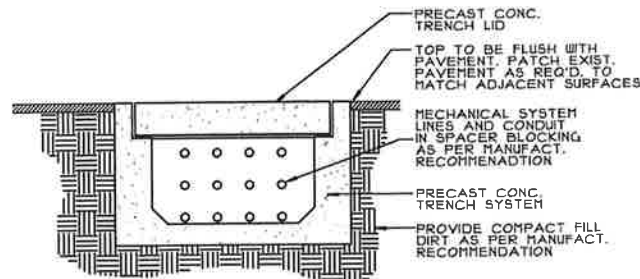
TYPICAL EXTERIOR WALL SECTION
1"=1'-0"



EXTERIOR CONDUIT ENCLOSURE DETAIL
1"=1'-0"

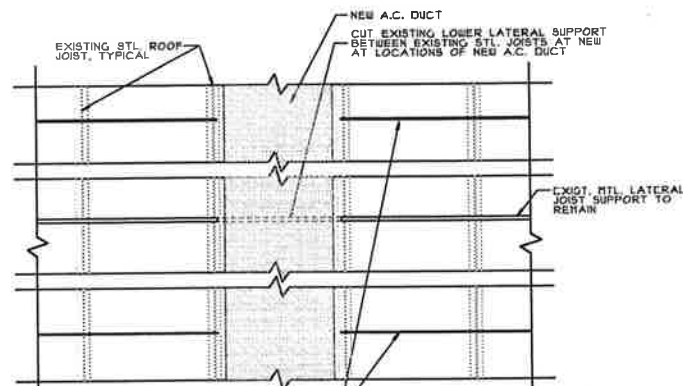


TYPICAL BOLLARD DETAIL 3/5
1/2"=1'-0"



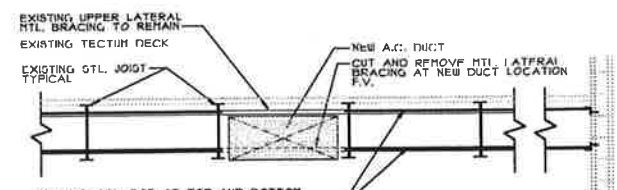
SEE TRENCH SPECIFICATION REQUIREMENTS. INSTALL AS PER MANUFACTURERS RECOMMENDATIONS.

TYPICAL TRENCH DETAIL 5/5
3/4"=1'-0"



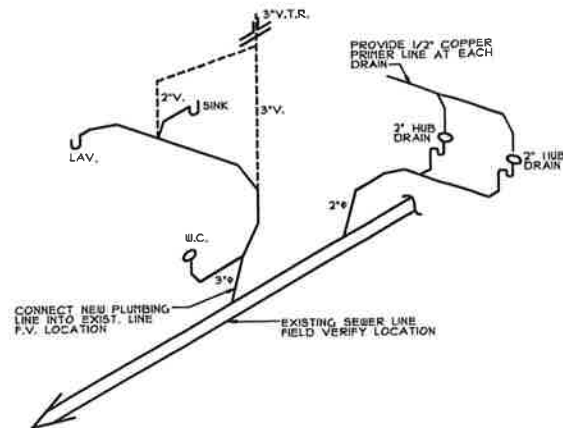
NEW 1/2" STL. ROD AT TOP AND BOTTOM AT 1/4 POINT OF EXIST. BAR-JOIST SPAN. ATTACH AND EXTEND FROM WALL TO WALL. PROVIDE 1/4" X 2 1/2" X 2 1/2" X 4" STL. ANGLE AT END WALLS. SECURE WITH 3-3/4" TAP CONS. PROVIDE 1/4" WELD ALL AROUND AT ALL CONNECTIONS.

NEW LATERAL BRACING PLAN AT EXISTING JOISTS 4A/5
3/8"=1'-0"

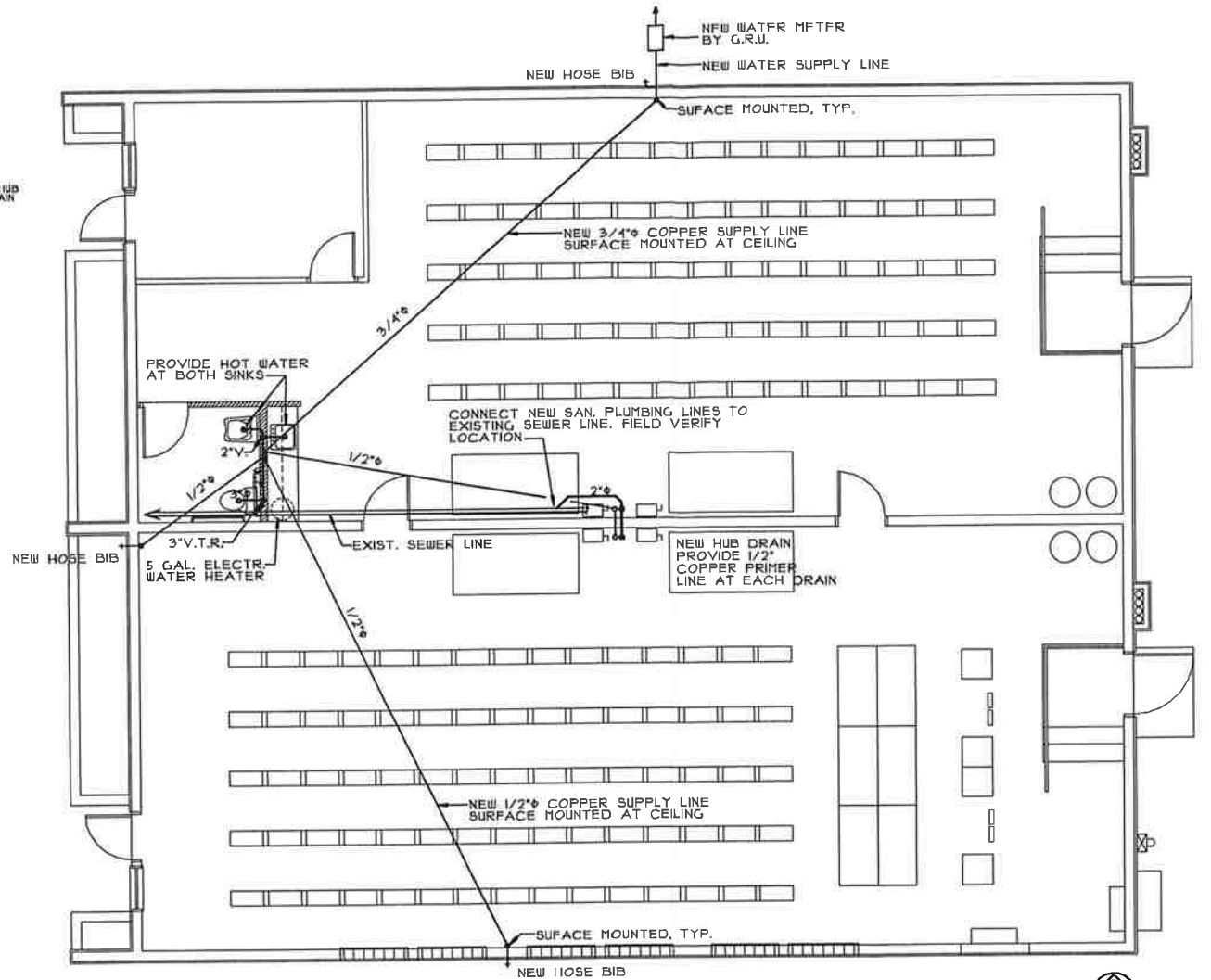


NEW 1/2" STL. ROD AT TOP AND BOTTOM AT 1/4 POINT OF EXIST. BAR-JOIST SPAN. ATTACH AND EXTEND FROM WALL TO WALL. PROVIDE 1/4" X 2 1/2" X 2 1/2" X 4" STL. ANGLE AT END WALLS. SECURE WITH 3-3/4" TAP CONS. PROVIDE 1/4" WELD ALL AROUND AT ALL CONNECTIONS.

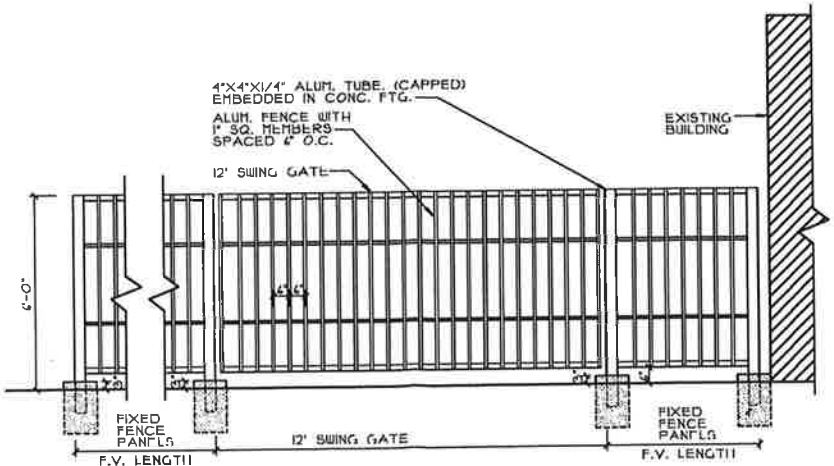
NEW LATERAL BRACING SECTION AT EXISTING JOISTS 4B/5
3/8"=1'-0"



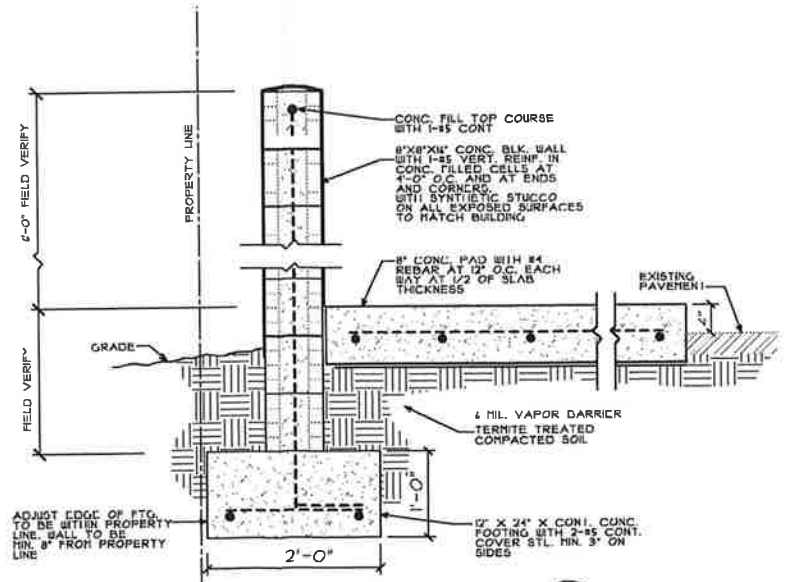
PLUMBING RISER DIAGRAM
N.T.S.



PLUMBING PLAN
3/16"=1'-0"



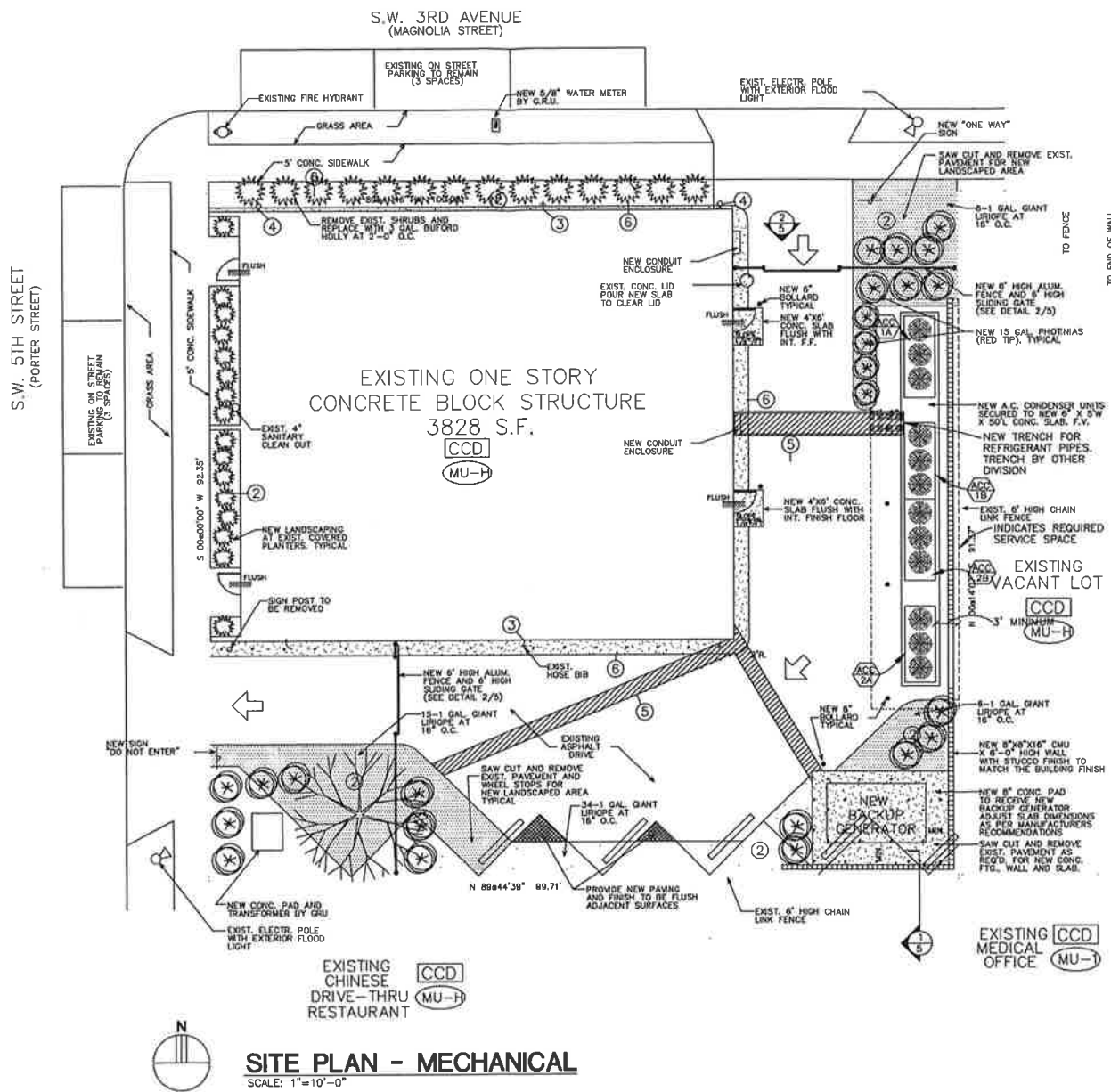
TYPICAL METAL GATE ELEVATION TWO LOCATIONS 2/5
3/8"=1'-0"



WALL SECTION AT GENERATOR PAD 1/5
1"=1'-0"

COMPUTER ROOM ACU SCHEDULE			
MARK	NORTH AC-1A, AC-1B	SOUTH AC-2A, AC-2B	
MANUFACTURER	LIEBERT	LIEBERT	
MODEL NUMBER	VH199AUCAEO	VH299AUCAEO	
ELECTRICAL CHAR. (V-Ø)	208-3Ø	208-3Ø	
UNIT TYPE	UPFLOW AIR	UPFLOW AIR	
WEIGHT (LBS)	1840	2085	
INDOOR TEMP. (DB °F/RH)	72°F/50%RH	72°F/50%RH	
OUTDOOR TEMP. (DB °F/WB °F)	95/80	95/80	
EVAP. FAN MOTOR (HP)	7.5	15	
EXTERNAL STATIC PRESSURE	1"	1"	
TOTAL CAPACITY (BTUH)	170,400	248,400	
SENSIBLE CAPACITY (BTUH)	159,900	224,800	
TOTAL AIR (CFM)	8,400	12,000	
OUTSIDE AIR (CFM)	NONE	NONE	
TYPE	UPFLOW AIR	UPFLOW AIR	
FILTER SIZE	2"	2"	
FILTER EFFICIENCY (%)	30%	30%	
COMPRESSOR NO.1 (RLA)	28.2	41.1	
COMPRESSOR NO.2 (RLA)	28.2	41.1	
ELECTRIC REHEAT			
CAPACITY (KW)	25	30	
STAGES (#)	3	3	
TYPE	FIN TUBULAR	FIN TUBULAR	
ELEC. CHAR. (V-Ø-Hz)	208-3-60	208-3-60	
	① ②	① ②	

- ① ACCESSORIES: FOR BOTH UNITS:
 REMOTE THERMOSTAT SENSOR
 3-STAGE ELECTRIC REHEAT
 NON-LOCKING DISCONNECT (EVAPORATOR)
 ADVANCED MICROPROCESSOR CONTROL
 BOTH AC UNITS TO RUN SIMULTANEOUSLY
 COMPRESSOR UNLOADER FOR 4-STEPS
- ② CONTRACTOR TO VERIFY REFRIGERANT PIPE LENGTH, SIZES AND REQUIRED TRAP AS PER MANUFACTURERS RECOMMENDATIONS.

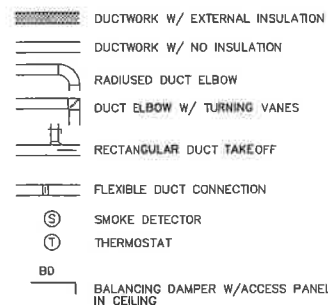


SITE PLAN - MECHANICAL
 SCALE: 1"=10'-0"

MECHANICAL ABBREVIATIONS (UNABRIDGED)

A	AMPS. AREA	ASV	ABOVE FINISHED CEILING	AV	AIR VENT
ACU	AIR CONDITIONING UNIT	AF	ABOVE FINISHED FLOOR	AV	AIR VENT
AD	AIR DUCT	AF	ABOVE FINISHED FLOOR	AV	AIR VENT
AHJ	AIR HANDLING UNIT	AF	ABOVE FINISHED FLOOR	AV	AIR VENT
AP	ACCESS PANEL	AF	ABOVE FINISHED FLOOR	AV	AIR VENT
BD	BALANCING DAMPER	AF	ABOVE FINISHED FLOOR	AV	AIR VENT
BFF	BELOW FINISHED FLOOR	AF	ABOVE FINISHED FLOOR	AV	AIR VENT
BTU	BRITISH THERMAL UNITS	AF	ABOVE FINISHED FLOOR	AV	AIR VENT
BUSH	BTU PER HOUR	AF	ABOVE FINISHED FLOOR	AV	AIR VENT
C	CONDENSATE	AF	ABOVE FINISHED FLOOR	AV	AIR VENT
CC	CONDENSER	AF	ABOVE FINISHED FLOOR	AV	AIR VENT
CD	CEILING DIFFUSER	AF	ABOVE FINISHED FLOOR	AV	AIR VENT
CFM	CUBIC FEET PER HOUR	AF	ABOVE FINISHED FLOOR	AV	AIR VENT
CFM	CUBIC FEET PER MINUTE	AF	ABOVE FINISHED FLOOR	AV	AIR VENT
CHW	CHILLED WATER	AF	ABOVE FINISHED FLOOR	AV	AIR VENT
CHWP	CHILLED WATER PUMP	AF	ABOVE FINISHED FLOOR	AV	AIR VENT
CHWR	CHILLED WATER RETURN	AF	ABOVE FINISHED FLOOR	AV	AIR VENT
CHWS	CHILLED WATER SUPPLY	AF	ABOVE FINISHED FLOOR	AV	AIR VENT
CU	CONDENSING UNIT; COPPER	AF	ABOVE FINISHED FLOOR	AV	AIR VENT
CV	CUBIC FEET	AF	ABOVE FINISHED FLOOR	AV	AIR VENT
CV	COEFFICIENT OF VALVE	AF	ABOVE FINISHED FLOOR	AV	AIR VENT
DB	DEFLECTION	AF	ABOVE FINISHED FLOOR	AV	AIR VENT
DEFL	DOOR DEFLECTION	AF	ABOVE FINISHED FLOOR	AV	AIR VENT
DG	DOOR GRILLE	AF	ABOVE FINISHED FLOOR	AV	AIR VENT
DA	DIAMETER	AF	ABOVE FINISHED FLOOR	AV	AIR VENT
DTW	DUAL TEMPER WATER	AF	ABOVE FINISHED FLOOR	AV	AIR VENT
DTWR	DUAL TEMP WATER RETURN	AF	ABOVE FINISHED FLOOR	AV	AIR VENT
DTWS	DUAL TEMP WATER SUPPLY	AF	ABOVE FINISHED FLOOR	AV	AIR VENT
EA	ENTERING AIR TEMPERATURE	AF	ABOVE FINISHED FLOOR	AV	AIR VENT
EDH	ELECTRIC DUCT HEATER	AF	ABOVE FINISHED FLOOR	AV	AIR VENT
EA	EXHAUST AIR	AF	ABOVE FINISHED FLOOR	AV	AIR VENT
EC	EXHAUST GRILLE	AF	ABOVE FINISHED FLOOR	AV	AIR VENT
ENT	ENTERING	AF	ABOVE FINISHED FLOOR	AV	AIR VENT
ENT	ENTERING HOOD	AF	ABOVE FINISHED FLOOR	AV	AIR VENT
ER	EXHAUST REGISTER	AF	ABOVE FINISHED FLOOR	AV	AIR VENT
ESP	EXTERNAL STATIC PRESSURE	AF	ABOVE FINISHED FLOOR	AV	AIR VENT
EXT	ENTERING WATER TEMPERATURE	AF	ABOVE FINISHED FLOOR	AV	AIR VENT
EXT	EXISTING	AF	ABOVE FINISHED FLOOR	AV	AIR VENT
EXH	EXHAUST FAN	AF	ABOVE FINISHED FLOOR	AV	AIR VENT
FCU	FAN COIL UNIT	AF	ABOVE FINISHED FLOOR	AV	AIR VENT
FD	FIRE DAMPER	AF	ABOVE FINISHED FLOOR	AV	AIR VENT
FE	FILTER	AF	ABOVE FINISHED FLOOR	AV	AIR VENT
FD	FLOOR DRAIN	AF	ABOVE FINISHED FLOOR	AV	AIR VENT
FE	FLOOR FINISH	AF	ABOVE FINISHED FLOOR	AV	AIR VENT
FT	FEET PER MINUTE	AF	ABOVE FINISHED FLOOR	AV	AIR VENT
FT	FEET	AF	ABOVE FINISHED FLOOR	AV	AIR VENT
FT	FEET OF WATER GAUGE	AF	ABOVE FINISHED FLOOR	AV	AIR VENT
FTU	FAN TERMINAL UNIT	AF	ABOVE FINISHED FLOOR	AV	AIR VENT
GA	GAUGE	AF	ABOVE FINISHED FLOOR	AV	AIR VENT
GALV	GALVANIZED	AF	ABOVE FINISHED FLOOR	AV	AIR VENT
GPH	GALLONS PER HOUR	AF	ABOVE FINISHED FLOOR	AV	AIR VENT
GPM	GALLONS PER MINUTE	AF	ABOVE FINISHED FLOOR	AV	AIR VENT
HC	HOT GAS	AF	ABOVE FINISHED FLOOR	AV	AIR VENT
HHW	HEATING HOT WATER	AF	ABOVE FINISHED FLOOR	AV	AIR VENT
HHWP	HEATING HOT WATER PUMP	AF	ABOVE FINISHED FLOOR	AV	AIR VENT
HHWR	HEATING HOT WATER RETURN	AF	ABOVE FINISHED FLOOR	AV	AIR VENT
HHWS	HEATING HOT WATER SUPPLY	AF	ABOVE FINISHED FLOOR	AV	AIR VENT
HP	HORSEPOWER	AF	ABOVE FINISHED FLOOR	AV	AIR VENT
HR	HOUR	AF	ABOVE FINISHED FLOOR	AV	AIR VENT
HO	HOLE	AF	ABOVE FINISHED FLOOR	AV	AIR VENT
IN	INSIDE DIAMETER	AF	ABOVE FINISHED FLOOR	AV	AIR VENT
IN	INCHES	AF	ABOVE FINISHED FLOOR	AV	AIR VENT
IN	INCHES OF WATER, GAUGE	AF	ABOVE FINISHED FLOOR	AV	AIR VENT
KW	KILOWATTS	AF	ABOVE FINISHED FLOOR	AV	AIR VENT
KWH	KILOWATT HOUR	AF	ABOVE FINISHED FLOOR	AV	AIR VENT
LAT	LEAVING AIR TEMPERATURE	AF	ABOVE FINISHED FLOOR	AV	AIR VENT
LB	POUND	AF	ABOVE FINISHED FLOOR	AV	AIR VENT
LD	LEAVING WATER TEMPERATURE	AF	ABOVE FINISHED FLOOR	AV	AIR VENT
LPS	LOW PRESSURE STEAM	AF	ABOVE FINISHED FLOOR	AV	AIR VENT
LVP	LEAVING WATER TEMPERATURE	AF	ABOVE FINISHED FLOOR	AV	AIR VENT
LWT	LEAVING WATER TEMPERATURE	AF	ABOVE FINISHED FLOOR	AV	AIR VENT
MAX	MAXIMUM	AF	ABOVE FINISHED FLOOR	AV	AIR VENT
MBH	THOUSANDS OF BTU'S	AF	ABOVE FINISHED FLOOR	AV	AIR VENT
MCF	THOUSANDS OF CUBIC FEET	AF	ABOVE FINISHED FLOOR	AV	AIR VENT
MD	MOTORIZED DAMPER	AF	ABOVE FINISHED FLOOR	AV	AIR VENT
MIN	MINIMUM	AF	ABOVE FINISHED FLOOR	AV	AIR VENT
NC	NORMALLY CLOSED	AF	ABOVE FINISHED FLOOR	AV	AIR VENT
NO	NOT IN CONTRACT	AF	ABOVE FINISHED FLOOR	AV	AIR VENT
NO	NORMALLY OPEN	AF	ABOVE FINISHED FLOOR	AV	AIR VENT
NO	NUMBER	AF	ABOVE FINISHED FLOOR	AV	AIR VENT
NOS	NOT TO SCALE	AF	ABOVE FINISHED FLOOR	AV	AIR VENT
OA	OUTDOOR AIR	AF	ABOVE FINISHED FLOOR	AV	AIR VENT
OD	OUTDOOR AIR LOUVER	AF	ABOVE FINISHED FLOOR	AV	AIR VENT
OD	ON CENTER	AF	ABOVE FINISHED FLOOR	AV	AIR VENT
OD	OUTSIDE DIAMETER	AF	ABOVE FINISHED FLOOR	AV	AIR VENT
P	PUMP	AF	ABOVE FINISHED FLOOR	AV	AIR VENT
PH	PHASE	AF	ABOVE FINISHED FLOOR	AV	AIR VENT
PI	PRESSURE	AF	ABOVE FINISHED FLOOR	AV	AIR VENT
PSI	POUNDS PER SQUARE INCH	AF	ABOVE FINISHED FLOOR	AV	AIR VENT
R	RADIUS	AF	ABOVE FINISHED FLOOR	AV	AIR VENT
RA	RETURN AIR	AF	ABOVE FINISHED FLOOR	AV	AIR VENT
RAG	RETURN AIR GRILLE	AF	ABOVE FINISHED FLOOR	AV	AIR VENT
RAK	RETURN AIR REGISTER	AF	ABOVE FINISHED FLOOR	AV	AIR VENT
RD	ROUND DIFFUSER	AF	ABOVE FINISHED FLOOR	AV	AIR VENT
RH	RELATIVE HUMIDITY	AF	ABOVE FINISHED FLOOR	AV	AIR VENT
RL	REFRIGERANT LIQUID	AF	ABOVE FINISHED FLOOR	AV	AIR VENT
RPM	REVOLUTIONS PER MINUTE	AF	ABOVE FINISHED FLOOR	AV	AIR VENT
RS	REFRIGERANT SUCTION	AF	ABOVE FINISHED FLOOR	AV	AIR VENT
RV	ROOM VENT	AF	ABOVE FINISHED FLOOR	AV	AIR VENT
SA	SUPPLY AIR	AF	ABOVE FINISHED FLOOR	AV	AIR VENT
SAR	SUPPLY AIR REGISTER	AF	ABOVE FINISHED FLOOR	AV	AIR VENT
SD	SMOKE DAMPER	AF	ABOVE FINISHED FLOOR	AV	AIR VENT
SE	SUPPLY FAN	AF	ABOVE FINISHED FLOOR	AV	AIR VENT
SG	SOFFIT GRILLE	AF	ABOVE FINISHED FLOOR	AV	AIR VENT
SG	STATIC PRESSURE	AF	ABOVE FINISHED FLOOR	AV	AIR VENT
SP	SPECIFICATION	AF	ABOVE FINISHED FLOOR	AV	AIR VENT
SP	SPECIFICATION	AF	ABOVE FINISHED FLOOR	AV	AIR VENT
SP	SPECIFICATION	AF	ABOVE FINISHED FLOOR	AV	AIR VENT
ST	STANDARD	AF	ABOVE FINISHED FLOOR	AV	AIR VENT
STL	STEEL	AF	ABOVE FINISHED FLOOR	AV	AIR VENT
STM	STEAM	AF	ABOVE FINISHED FLOOR	AV	AIR VENT

MECHANICAL LEGEND



AIR COOLED CONDENSER SCHEDULE			
MARK	ACC-1A,1B NORTH	ACC-2A,2B SOUTH	
MANUFACTURER	LIEBERT	LIEBERT	
MODEL NUMBER	CDP205L	CDP308L	
ELECTRICAL CHAR. (V-Ø)	208-3Ø	208-3Ø	
NO. OF FANS	2	3	
FULL LOAD AMPS	8.8 TOTAL	12.8 TOTAL	
AMBIENT TEMPERATURE °F	95/80	95/80	
HOT GAS LINE SIZE (IN)	(2) 1-1/8	(2) 1-1/8	
LIQUID LINE SIZE (IN)	(2) 7/8	(2) 7/8	

EXHAUST FAN SCHEDULE										
FAN	TYPE	AIR QUANTITY CFM	STATIC PRESSURE IN H2O	SPEED RPM	MOTOR HP	ELEC. CHAR. (V-Ø)	MANUF.	MODEL NUMBER	SONES	REMARKS
EF-1	CEILING CENTRIFUGAL	120	0.25	1365	77WATTS	120-1	COOK	GC-320	3.3	① ② ③ ④ ⑤ ⑥ ⑦ ⑧

- ① PROVIDE DISCONNECT
 ② PROVIDE SOFFIT VENT
 ③ BIRDSCREEN
 ④ PROVIDE BACKDRAFT DAMPER
 ⑤ PROVIDE ROOF CURB
 ⑥ THERMAL OVERLOAD
 ⑦ BELT DRIVE
 ⑧ DIRECT DRIVE
 ⑨ PROVIDE SPEED CONTROLLER
 ⑩ ENGERIZED BY ROOM LIGHT SWITCH BY DIV.16

ICM INGLE, CAMPBELL, MOSES & ASSOCIATES, INC.
 CONSULTING ENGINEERS
 FL. LIC. EB - 0003907
 2208 NW 40TH TERRACE, SUITE A • GAINESVILLE, FLORIDA 32605 • PHONE (352) 372-1911 20002

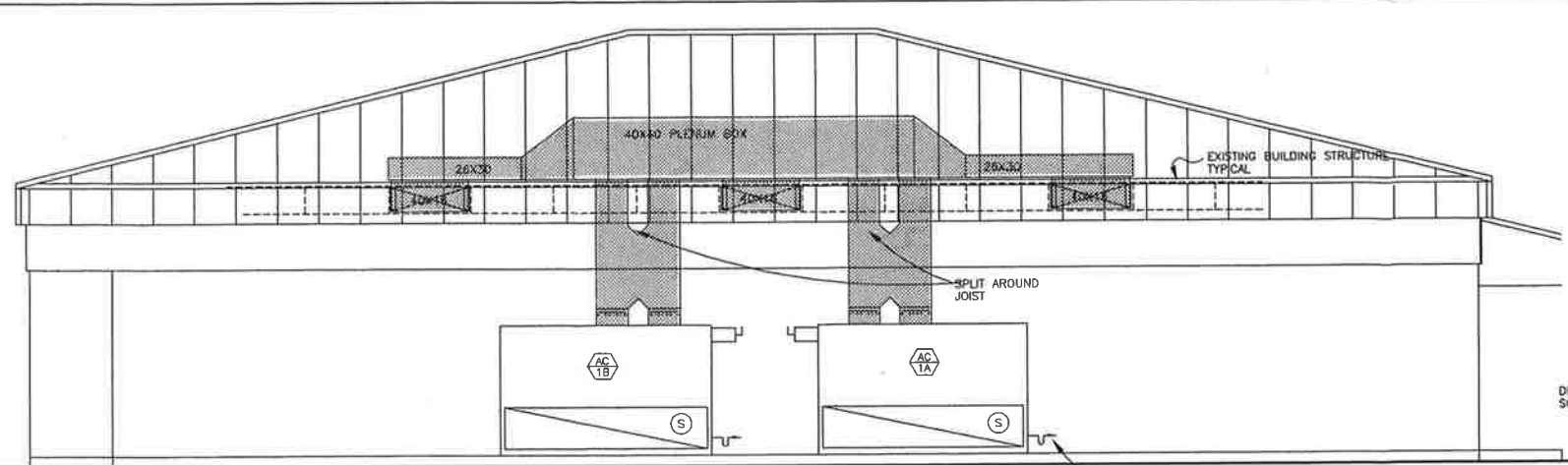
DESIGNED BY: EC	APPROVED BY: EC	MAP No.	SHEET M-1
DRAWN BY: TAS	CHECKED BY: EC	DATE 12/20/00	
ACAD FILE NAME:	CIRCUIT No.	JOB NUMBER	

GAINESVILLE REGIONAL UTILITIES
 ELECTRICAL ENGINEERING
 301 S.E. 4th. AVE.
 GAINESVILLE, FLORIDA 32602
 (904) 334-3400 EXT. 1515

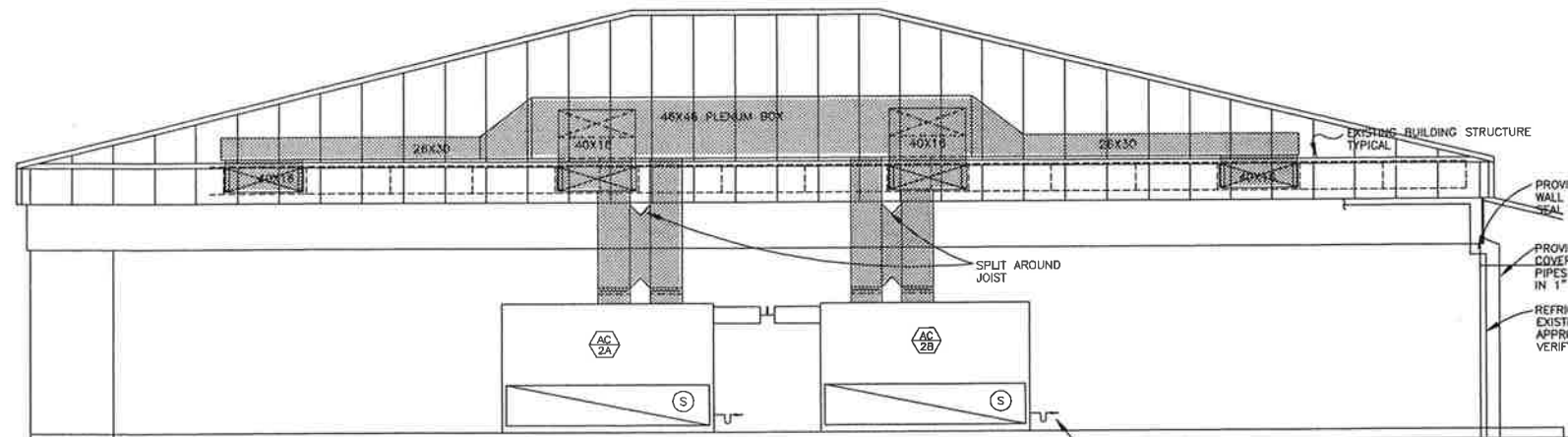


REVISIONS:	DATE	ENG.	CHECKED	RELATED TRACINGS
Request Transfer/Resure				
Loop/RADIAL #				
DESIGNED BY: EC				
APPROVED BY: EC				
DRAWN BY: TAS				
CHECKED BY: EC				
Time Date Stamp				

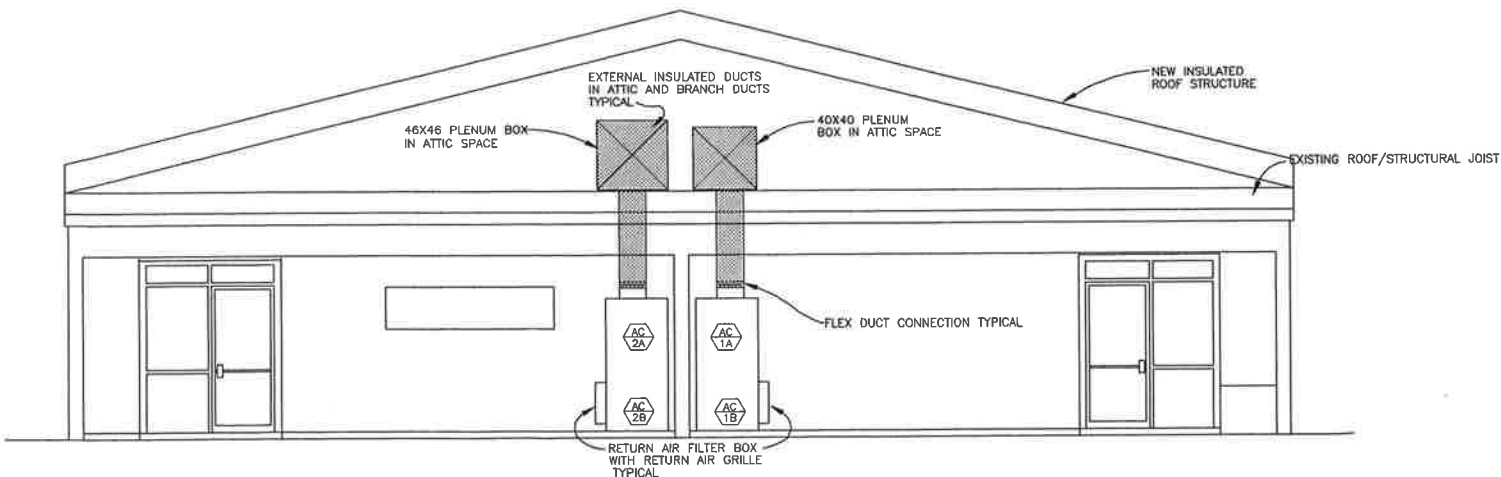
01/20/01 08:44:27 tstr NA:00002X H:sp:dwg



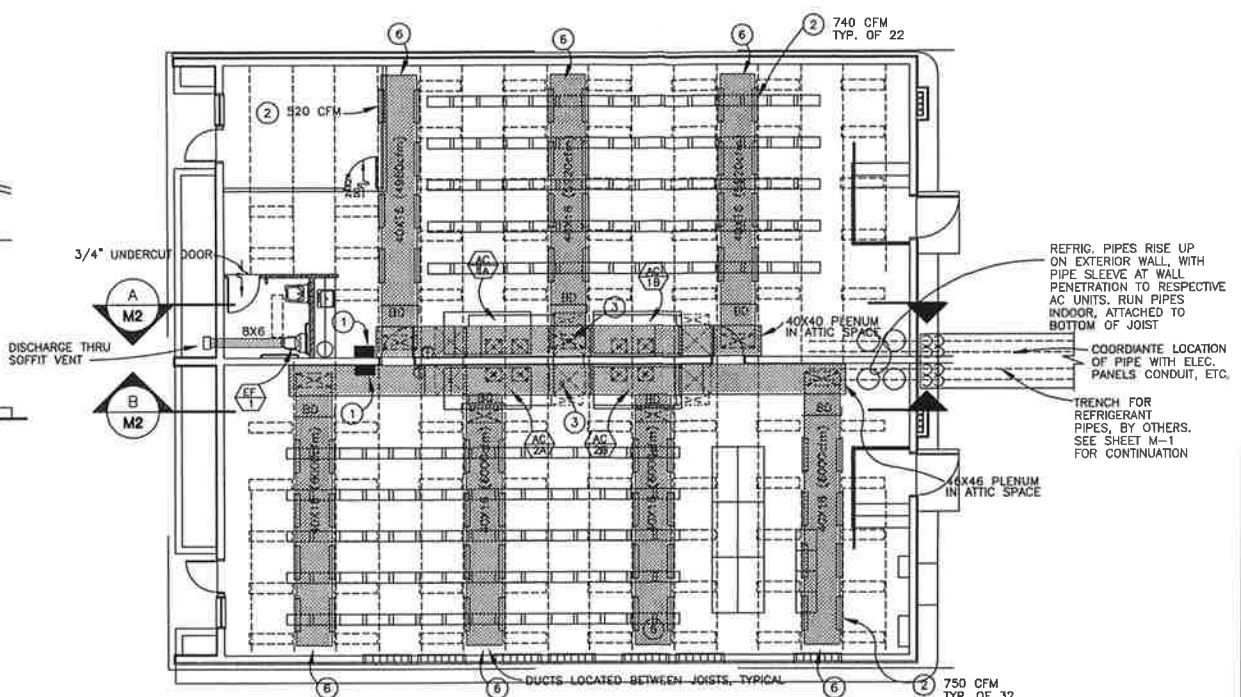
SECTION A
SCALE: 1/4" = 1'-0"



SECTION B
SCALE: 1/4" = 1'-0"



TYPICAL AHU ELEVATION SIDE VIEW LOOKING WEST
SCALE: 1/4" = 1'-0"



RENOVATION PLAN - MECHANICAL
SCALE: 1/8" = 1'-0"

- PLAN NOTES**
- 1 AUTO CHANGE OVER CONTROL MODULE, WITH REMOTE WALL MOUNTED COOLING THERMOSTAT BY LIEBERT. BOTH UNITS IN EACH ROOM TO OPERATE SIMULTANEOUSLY FROM THE SAME CONTROL MODULE.
 - 2 SIDEWALL REGISTER: TITUS MODEL DL-30X6 DRUM LOUVER WITH DAMPER.
 - 3 FLOOR DRAIN
 - 4 REFRIGERANT PIPES, RUN TIGHT TO UNDERSIDE OF JOIST, TO OUTDOOR CONDENSER. PIPES TO BE SUPPORTED FROM JOIST.
 - 5 RUN REFRIGERANT PIPES UNDER CONDENSING UNITS. PROVIDE APPROVED PIPE SUPPORTS, 48" ON CENTERS. INSULATE REFRIGERANT PIPES WITH 3/4" ARMAFLEX. PROVIDE ALUMINUM JACKETS FOR ALL INSULATION EXPOSED TO SUN.
 - 6 REMOVE EXISTING BOTTOM JOIST BRACING FOR NEW DUCTS, TYPICAL. INSTALL TOP OF DUCT TIGHT TO BOTTOM SIDE OF JOIST BRACING. TYPICAL.

17/0017
 01/29/01
 MEP.dwg
 N:\000000\

GAINESVILLE REGIONAL UTILITIES
ELECTRICAL ENGINEERING
 301 S.E. 4th. AVE.
 GAINESVILLE, FLORIDA 32602
 (904) 334-3400 EXT. 1515

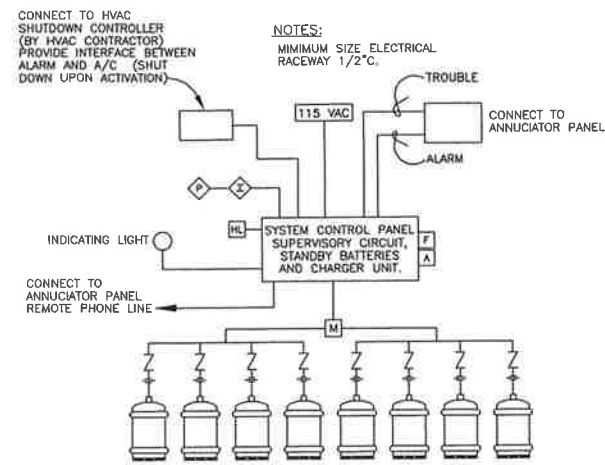


REVISIONS:	DATE	ENG.	CHECKED	RELATED TRACINGS

BID DOCUMENTS

ICM
INGLEY, CAMPBELL, MOSES & ASSOCIATES, INC.
 CONSULTING ENGINEERS
 FL. LIC. EB - 0003907
 2209 HW 40TH TERRACE, SUITE A • GAINESVILLE, FLORIDA 32605 • PHONE (352) 372-1811 20002

DESIGNED BY: EC	BUILDING RENOVATION FOR A RADIO EQUIPMENT SUBSTATION - HANGER BUILDING ACAD FILE NAME: GAINESVILLE, FLORIDA	SHEET M-2 OF 2
APPROVED BY: EC		
DRAWN BY: TAS		
CHECKED BY: EC		



TYPICAL DIAGRAM FOR AREA FIRE SUPPRESSION SYSTEM
NOT TO SCALE

- NOTES:**
MINIMUM SIZE ELECTRICAL RACEWAY 1/2" C.
- ◇ PHOTO ELECTRIC SMOKE DETECTOR
 - ◇ IONIZATION SMOKE DETECTOR
 - MANUAL RELEASE
 - ABORT SWITCH
 - MAIN/RESERVE SWITCH
 - STROBE HORN(DISCHARGE) OR STROBE
 - AGENT CONTAINER
B - CONTAINERS INDICATED FOR EACH ROOM

FIRE ALARM & SUPPRESSION SYSTEM ELECTRICAL SPECIFICATIONS AND NOTES

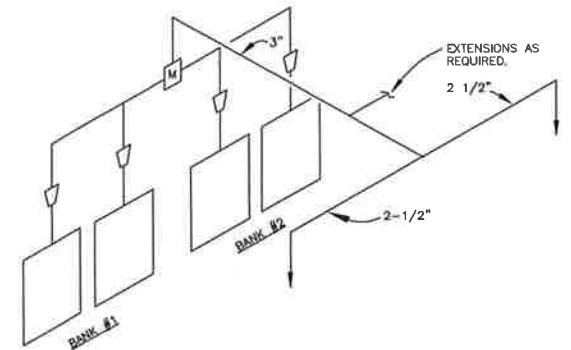
- THE CONTRACTOR SHALL FURNISH ALL LABOR, MATERIALS AND EQUIPMENT NECESSARY FOR THE INSTALLATION OF A COMPLETE FIRE SUPPRESSION SYSTEM AS INDICATED WITHIN THESE DRAWINGS.
- ALL WORK SHALL BE INSTALLED IN STRICT ACCORDANCE WITH ALL APPLICABLE CODES AND ORDINANCES AND WITH MANUFACTURERS RECOMMENDATIONS. ALL WORK, MATERIALS AND EQUIPMENT SHALL COMPLY WITH THE NATIONAL ELECTRICAL CODE 1996 EDITION, AND NFPA 2001.72 AND 2001.75.
- THE CONTRACTOR SHALL CAREFULLY EXAMINE THE DRAWINGS PRIOR TO SUBMITTING HIS BID. THE CONTRACTOR WILL BE REQUIRED TO FURNISH, INSTALL AND CONNECT ALL ITEMS AS INDICATED ON THE DRAWINGS.
- ALL MATERIALS AND EQUIPMENT SHALL BE INSTALLED IN A NEAT, FIRST CLASS, WORKMANLIKE MANNER, TO THE APPROVAL OF THE OWNER, ENGINEER AND GOVERNING AUTHORITIES.
- GUARANTEES AND SERVICE:** IN ADDITION TO THE MANUFACTURERS STANDARD GUARANTEES, THE CONTRACTOR SHALL GUARANTEE ALL MATERIALS, EQUIPMENT AND WORKMANSHIP AGAINST DEFECTS FOR ONE YEAR FROM THE DATE OF FINAL ACCEPTANCE, AND SHALL CORRECT ANY DEFECTS AT NO ADDITIONAL COST TO THE OWNER.
- CONDUIT AND WIRING:** THE CONTRACTOR SHALL PROVIDE COPPER CONDUCTORS IN METALLIC RACEWAY. CONDUITS SHALL CONTAIN A INSULATED GREEN GROUND CONDUCTOR. FOLLOW RULES AND REGULATIONS OF THE NEC FOR PROPER INSTALLATION REGARDING INSTALLATION AND SUPPORT.

CONDUIT SHALL BE INSTALLED AS NOTED. IF NOT SPECIFICALLY ADDRESSED THE FOLLOWING SHALL APPLY: (A) PROVIDE GRS (GALVANIZED RIGID STEEL) IN HAZARDOUS LOCATIONS, I.E.: ON EXTERIOR OF BUILDING. (B) PROVIDE EMT (ELECTRICAL METALLIC TUBING) ON WALLS. PROVIDE FITTINGS AS MANUFACTURED FOR CONDUIT USED.

PROVIDE COPPER CONDUCTORS WITH DUAL RATED THWN-THHN TYPE INSULATION.
- OUTLET BOXES:** CONTRACTOR SHALL INSTALL BOXES BEST SUITED TO LOCATION AND TYPE OF CONSTRUCTION. BOXES SHALL BE RIGIDLY INSTALLED TRUE AND PLUMB.
- GROUNDING AND BONDING:** ALL NON-CURRENT CARRYING METALLIC PARTS OF ELECTRICAL EQUIPMENT AND RACEWAY SYSTEMS SHALL BE GROUNDED. GROUNDING AND BONDING SHALL BE IN COMPLIANCE WITH THE NEC AND LOCAL AUTHORITIES. RESISTANCE TO GROUND SHALL BE LESS THAN 5 OHMS.
- TESTING AND IDENTIFICATION:** ALL WIRING AND EQUIPMENT SHALL BE TESTED AND LABELED AND THE INSTALLATION SHALL BE IN WORKING ORDER PRIOR TO ACCEPTANCE.
- CIRCUIT BREAKERS SHALL BE MOLDED CASE FULLY RATED CIRCUIT BREAKERS. NO SERIES-RATED DEVICES MOUNTED IN EXISTING PANELBOARDS.
- PROVIDE WIRING PER MANUFACTURERS REQUIREMENTS. WIRING SYSTEMS SHALL BE PROPERLY INSTALLED IN COMPLIANCE WITH LOCAL CODES AND THE SYSTEM DRAWINGS. AC AND DC WIRING SHALL NOT BE COMBINED IN A COMMON CONDUIT OR RACEWAY UNLESS PROPERLY SHIELDED AND GROUNDED.
- ALL FIELD CIRCUITS SHALL BE FREE OF GROUND FAULTS AND SHORT CIRCUITS.
- POWER SHALL BE SUPPLIED TO CONTROL UNIT FROM A SEPARATE DEDICATED SOURCE THAT WILL NOT BE SHUT DOWN ON SYSTEM OPERATION.
- THE DETECTORS SHALL BE INSTALLED IN A PROFESSIONAL MANNER AND IN ACCORDANCE WITH TECHNICAL DATA REGARDING THEIR INSTALLATION.
- MANUAL PULL STATION SHALL BE PROPERLY INSTALLED, READILY ACCESSIBLE, ACCURATELY IDENTIFIED, AND PROPERLY PROTECTED TO PREVENT DAMAGE.
- MANUAL PULL STATIONS USED TO RELEASE AGENTS SHALL REQUIRE TWO SEPARATE AND DISTINCT ACTIONS FOR OPERATION.
- ABORT SWITCHES SHALL BE OF THE DEADMAN TYPE REQUIRING CONSTANT MANUAL PRESSURE, PROPERLY INSTALLED, READILY ACCESSIBLE WITHIN THE HAZARD AREA, AND CLEARLY IDENTIFIED. SWITCHES THAT REMAIN IN THE ABORT POSITION WHEN RELEASED SHALL NOT BE USED FOR THIS PURPOSE. MANUAL PULL STATIONS SHALL OVERRIDE ABORT SWITCHES.
- PAINT PIPING RED. PROVIDE RUST PROOF PRIMER AND TWO COATS OF RED EPOXY PAINT. ALTERNATELY WRAP PIPE WITH RED VINYL TAPE.
- COORDINATE PIPING AND NOZZLE LOCATIONS WITH OTHER TRADES, PRIOR TO INSTALLING ANY EQUIPMENT PIPING OR APPARATUS. FIRE PROTECTION NOZZLE LOCATIONS MAY TAKE PRECEDENCE OVER OTHER ITEMS.

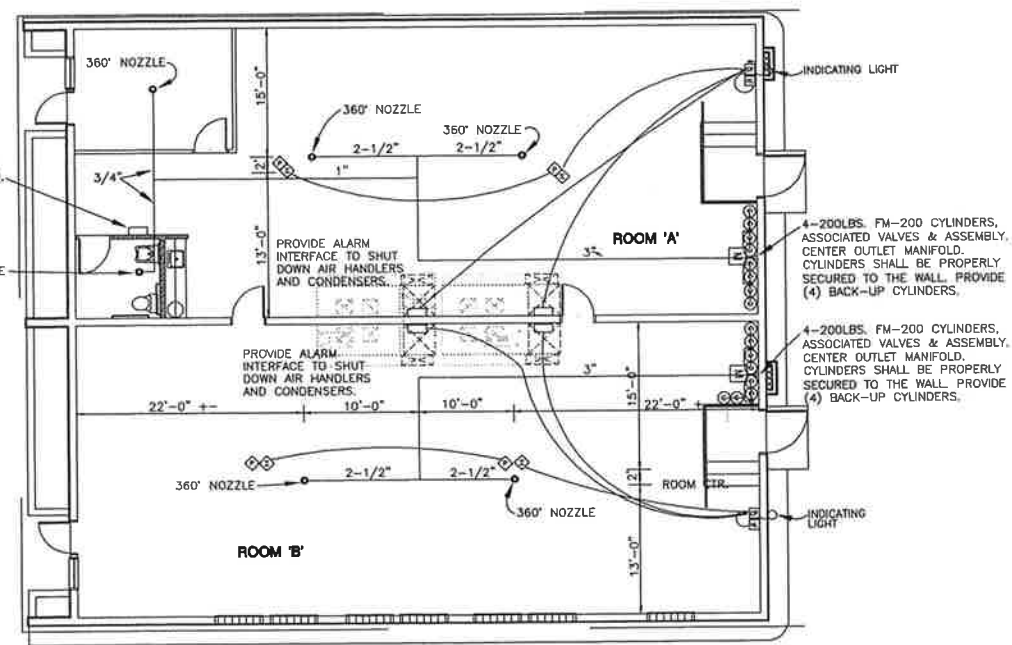
DESIGN CRITERIA ROOM 'A' OR 'B'

MINIMUM DESIGN CONCENTRATION	7.00%
MINIMUM ENCLOSURE TEMPERATURE	70°F
VOLUME OF THE ROOM (64'-7.5" LENGTH, 30'-0" WIDTH, 11'-5" HEIGHT)	22,135 CU FT
AGENT REQUIRED [22,135 CU FT x .0341 (FROM TABLE 3-5.1.J-NFPA2001)]	755 LBS
FM-200 CONTAINER SIZE FILL BOTTLES FOR AGENT REQUIRED TO SERVE SPACE.	4-200 LBS



ROOM 'A' OR 'B' RISER DIAGRAM
NOT TO SCALE

NOTE:
PIPE SIZES AS SHOWN IS BASED ON PYROTRONICS PRE-ENGINEERED DATA SHEETS. CONTRACTOR SHALL SUBMIT SHOP DRAWINGS WITH CALCULATIONS FOR THE AUTHORITY HAVING JURISDICTION APPROVAL BEFORE INSTALLATION.



RENOVATION PLAN - FIRE SUPPRESSION
SCALE: 1/8" = 1'-0"

FIRE ALARM & SUPPRESSION SYSTEM ELECTRICAL LEGEND

- FIRE CONTROL PANEL WITH PULL STATION AND ABORT SWITCH MOUNTED ON PANEL. (FENWALL #2320 OR APPROVED EQUAL).
- COMBINATION HORN/LIGHT ASSEMBLY
- ◇ IONIZATION SMOKE DETECTOR CEILING MOUNTED WITH FUNCTIONAL TEST CAPABILITY, FLASHING I.E.D. FOR VISUAL SUPERVISION. DUAL IONIZATION CHAMBERS 10.2 TO 36.8 VDC INPUT VOLTAGE AND PROVIDE RELAY BASE (2 OR 4 WIRE) (FENWALL #70-501 SERIES WITH BASE OR APPROVED EQUAL).
- ◇ PHOTO ELECTRIC SMOKE DETECTOR CEILING MOUNTED WITH FUNCTIONAL TEST CAPABILITY, FLASHING I.E.D. FOR VISUAL SUPERVISION. HIGH AIR VELOCITY RATING, 10.2 TO 36.8 VDC INPUT VOLTAGE AND PROVIDE A RELAY BASE. (FENWALL #7156 WITH BASE OR APPROVED EQUAL).
- C. CONDUIT

05/18/00 1409455 c5pe N:\20002\Fp01.dwg

GAINESVILLE REGIONAL UTILITIES ELECTRICAL ENGINEERING
301 S.E. 4th. AVE.
GAINESVILLE, FLORIDA 32602
(904) 334-3400 EXT. 1515



REVISIONS:	DATE	ENG.	CHECKED	RELATED TRACINGS

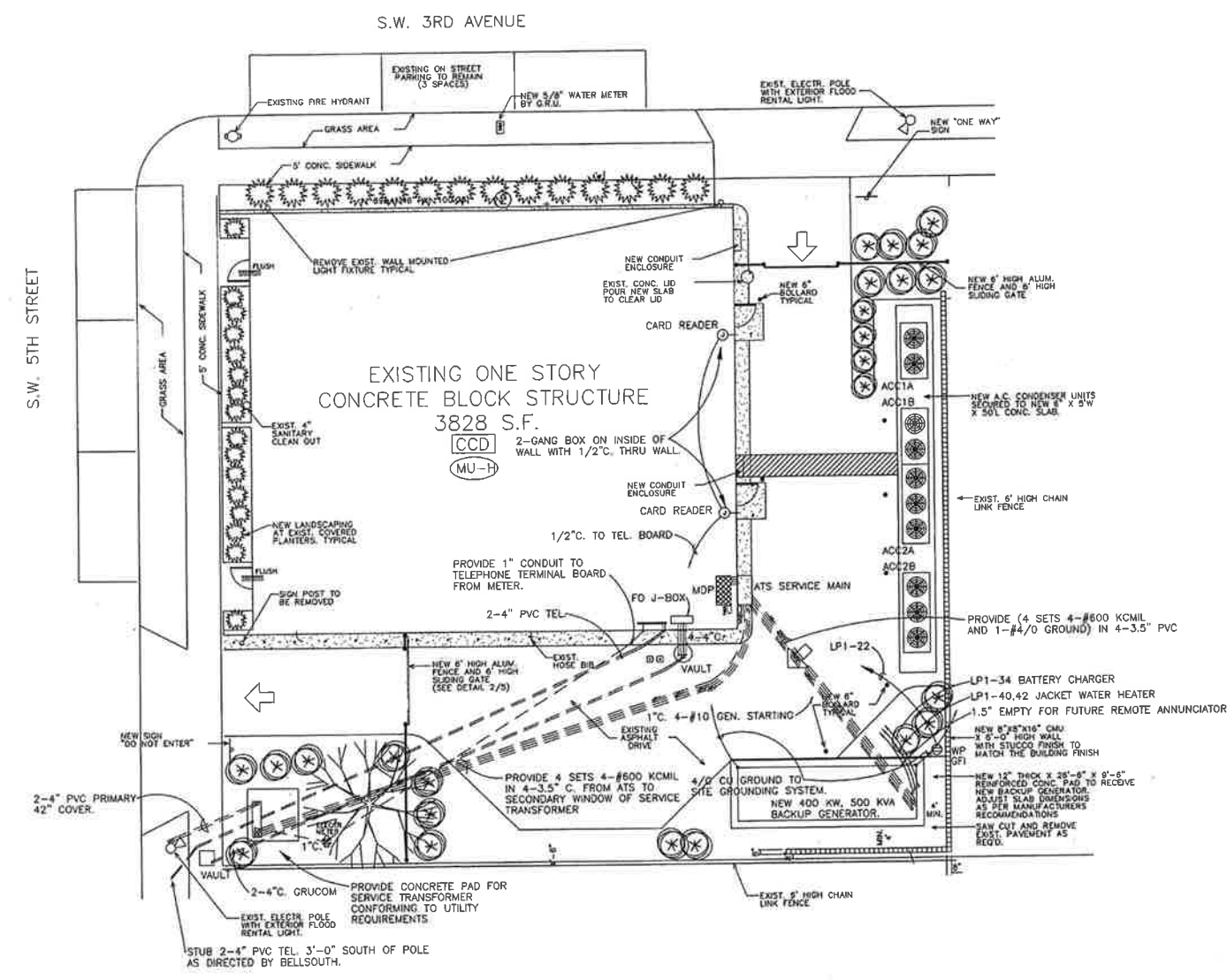
Request Transmitter/Returns	LOOP/RADIAL #	DESIGNED BY:	CMS
		APPROVED BY:	ALC
		DRAWN BY:	CMS
		CHECKED BY:	SS
			5/17/2000 2:17PM

ARTHUR L CAMPBELL III
PE - 0013153

ICM
INGLEY, CAMPBELL, MOSES & ASSOCIATES, INC.
CONSULTING ENGINEERS
FL LIC. EB - 0003907
2209 NW 40TH TERRACE, SUITE A • GAINESVILLE, FLORIDA 32605 • PHONE (352) 372-1911 20002

BID DOCUMENTS

BUILDING RENOVATION FOR A RADIO EQUIPMENT SUBSTATION - HANGER BUILDING	MAP No.	SHEET
ACAD FILE NAME:	DATE 12/20/00	F-1
GAINESVILLE, FLORIDA	CIRCUIT No.	OF
	JOB NUMBER 20002	1



ELECTRICAL SITE PLAN
SCALE: 1" = 10'-0"

ELECTRICAL NOTES

1. WHERE TWO SWITCHES ARE REQUIRED TO CONTROL THE LEVEL OF LIGHTING, ALTERNATE FIXTURES IN THE SAME ROW SHALL BE SWITCHED.
2. COORDINATE LOCATIONS OF ELECTRICAL EQUIPMENT, DEVICES, OUTLETS, FIXTURES, ETC. WITH ARCHITECTURAL PLANS, ELEVATIONS AND REFLECTED CEILING PLANS, PRIOR TO ROUGH-IN WORK, DO NOT SCALE ELECTRICAL DRAWINGS.
3. INSTALL FIXTURES SUCH THAT LAMPS ARE PARALLEL IN SAME VISUAL AREA.
4. THERE SHALL BE NO WALL OUTLETS INSTALLED BACK TO BACK, OFFSET TWELVE INCHES MINIMUM.
5. ALL WIRE SHALL BE COPPER.
6. PROVIDE AN INSULATED GROUNDING CONDUCTOR IN ALL FEEDER AND BRANCH CIRCUITS.
7. NOT USED
8. REMOVE ALL UNUSED EXISTING EXPOSED CONDUIT, WIRE AND BOXES. PULL OUT ALL WIRE FROM EXISTING CONCEALED CONDUIT THAT HAS BEEN ABANDONED.
9. DRAWINGS INDICATE THE REUSE OF SOME EXISTING OUTLET BOXES AND CONDUIT, WHERE IT IS IMPRACTICAL BECAUSE OF JOB CONDITIONS TO REUSE AN OUTLET BOX OR CONDUIT, CONTRACTOR SHALL PROVIDE NEW OUTLET BOX OR CONDUIT AS REQUIRED.
10. CONTRACTOR SHALL REPAIR TO ORIGINAL CONDITION TO OWNER'S SATISFACTION ANY EXISTING WALL, FLOOR, CEILING OR OTHER EXISTING ITEMS REMOVED, ALTERED OR DAMAGED DURING CONSTRUCTION.
11. THE CONTRACTOR SHALL REROUTE EXISTING CIRCUIT(S) OR PROVIDE NEW CIRCUIT(S) AS REQUIRED TO MAINTAIN ELECTRICAL SUPPLY TO EXISTING FIXTURES, DEVICES, OUTLETS, ETC. NOT BEING REMOVED OR ALTERED.
12. DIVISION 16 DESIGN PROVIDES A NUMBER OF BRANCH CIRCUITS, PHASES, AMPACITY AND OVERCURRENT PROTECTION FOR DIVISION 15 DESIGN BASIS EQUIPMENT CONFORMING TO MANUFACTURER'S SPECIFICATIONS AVAILABLE AT TIME OF DESIGN; IF REQUIREMENTS OF EQUIPMENT ACTUALLY PROVIDED UNDER CONTRACT FOR CONSTRUCTION ARE DIFFERENT, CONTRACTOR SHALL MAKE ALL CHANGES REQUIRED WITHOUT INCREASE IN THE CONTRACT AMOUNT, SUCH CHANGES MAY INCLUDE, BUT ARE NOT LIMITED TO: SIZE OF WIRES, SIZE OF CONDUIT, NUMBER, TYPE AND SIZE OF CIRCUIT BREAKERS, FUSE PROTECTION AND ADDITIONAL DISCONNECT SWITCHES.
13. CONTRACTOR SHALL PROVIDE ADDITIONAL JUNCTION BOXES, CONDUCTORS AND OTHER MATERIALS AND LABOR NECESSARY TO CONNECT PARALLEL FEEDER RUNS WHERE SUCH FEEDERS EXCEED CONNECTION CAPACITY OF CIRCUIT BREAKERS, PANELBOARDS AND OTHER CONNECTION POINTS.
14. EXIT SIGNS SHALL REMAIN ON CONTINUOUSLY AND SHALL NOT BE SWITCHED.
15. ALL RECEPTACLES IN TOILET ROOMS, OUTSIDE AND WITHIN 6'-0" OF A SINK SHALL BE A GROUND FAULT INTERRUPTER (GFI) RECEPTACLE. CONTRACTOR SHALL NOT USE GROUND FAULT CIRCUIT BREAKERS AND SHALL NOT FEED THROUGH A GROUND FAULT INTERRUPTER RECEPTACLE TO SERVE OTHER RECEPTACLES.
16. ELECTRICAL CONTRACTOR SHALL PROVIDE ADEQUATE AND PROPER SUPPORT FOR ALL ELECTRICAL OUTLETS, DEVICES, LIGHT FIXTURES, ETC. BUILT IN OR MOUNTED ON CEILINGS. NO OUTLET BOX, DEVICE, LIGHT FIXTURE, ETC. SHALL BE SUPPORTED FROM ANY ACoustICAL CEILING TILE OR DRYWALL CEILINGS. PROVIDE METAL SUPPORT HANGERS FROM STRUCTURE ABOVE.
17. ELECTRICAL CONTRACTOR SHALL COORDINATE ALL WALL AND FLOOR OUTLET LOCATIONS WITH LOCATIONS OF CHALKBOARDS, TACKBOARDS AND FURNITURE PLANS PRIOR TO INSTALLATION OF ANY BOXES.
18. ALL ELECTRICAL EQUIPMENT, DEVICES, ETC. LOCATED OUTDOORS SHALL BE WEATHERPROOF.
19. REFER TO ARCHITECTURAL DRAWINGS FOR PHASING OF CONSTRUCTION, TEMPORARY AND PERMANENT FENCES AND ALL CONCRETE WORK.



**GAINESVILLE REGIONAL UTILITIES
ENERGY DELIVERY ENGINEERING**
3805 NW 97 BLVD.
GAINESVILLE, FLORIDA 32614-7117
(352) 334-3600 EXT. 6068



REVISIONS:	DATE	ENG.	CHECKED	RELATED TRACINGS

Request Transfer/Remove	LOOPIRADIAL #	RE-DESIGNED BY: OHH
<input type="checkbox"/> AT <input type="checkbox"/> GUY		APPROVED BY: WTS
<input type="checkbox"/> Yes <input type="checkbox"/> No <input type="checkbox"/> Yes <input type="checkbox"/> No		RE-DRAWN BY: OHH
Location Required	Reviewed As Built Date	CHECKED BY: RJL
Secured By	Approved As Built Date	

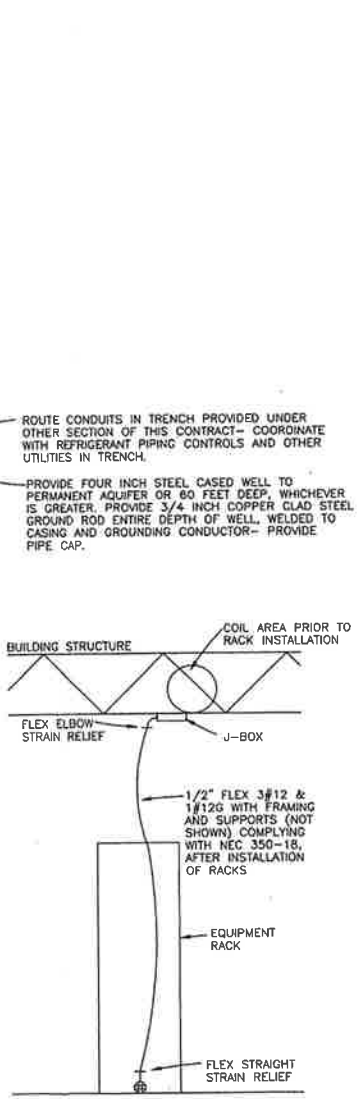
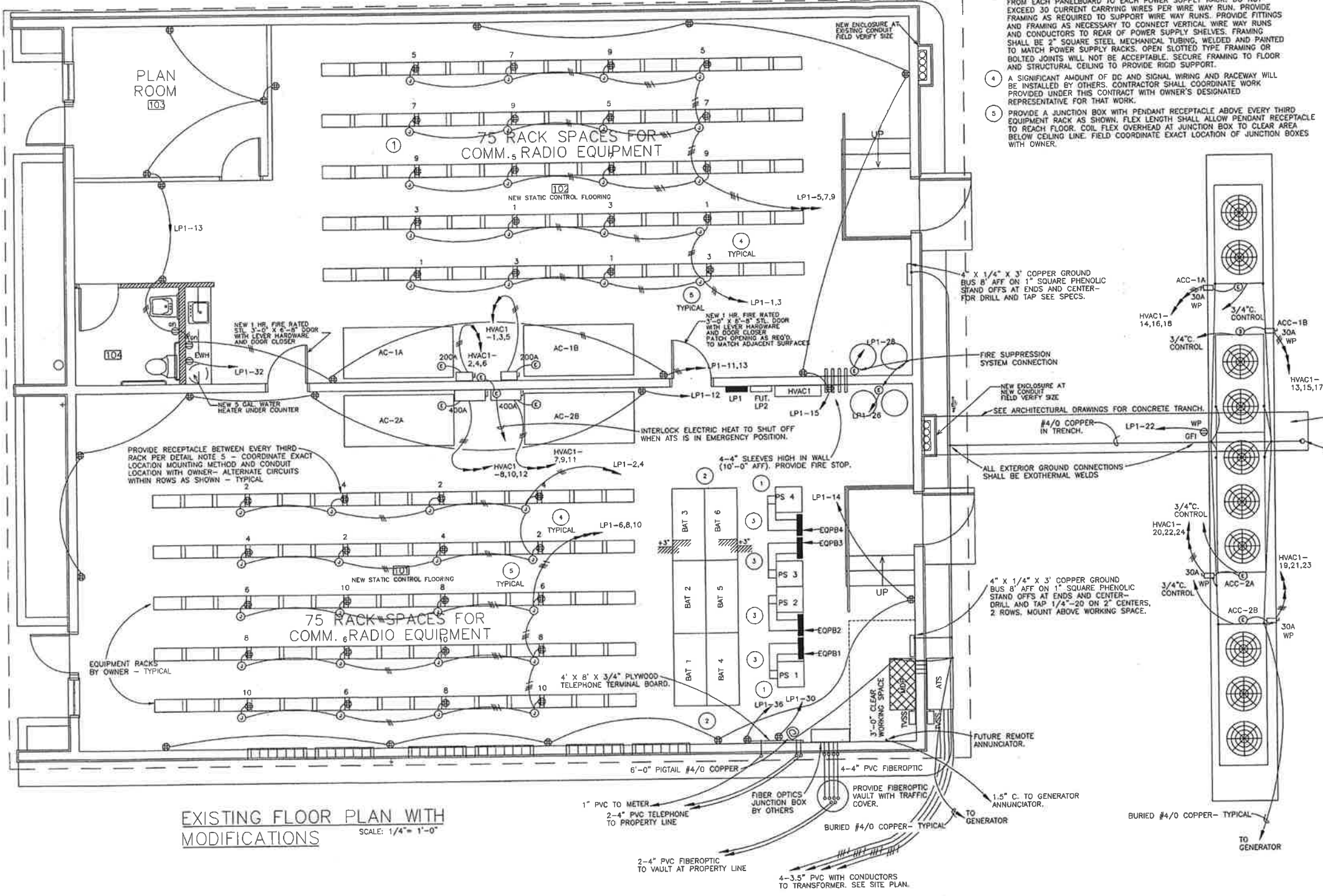
RENOVATION FOR GRUCOM - HANGER BUILDING	
RADIO EQUIPMENT SUBSTATION	
ACAD FILE NAME: GRUCOM HANGER BUILDING DWG	
301 SW 5th STREET	

SCALE: 1"=10'	SHEET E-1 OF 4
MAP No. 4060	
DATE 01/04/01	
CIRCUIT No. XXX	
JOB NUMBER 1310P	

SOME INFORMATION ON THIS DRAWING IS TAKEN FROM DRAWINGS PRODUCED BY INGLEY, CAMPBELL, MOSES & ASSOCIATES, INC. WITH THEIR PERMISSION AND REVISED BY GRU.

NORTH

- NOTES:
- PS-1,2,3 and 4 ARE DC POWER SUPPLIES BY OTHERS. CONTRACTOR SHALL PROVIDE FRAMING AND COORDINATION TO LOCATE PANEL BOARDS AS SHOWN WITH FRAMES FLUSH WITH POWER SUPPLIES AND 36 INCHES CLEAR IN FRONT.
 - BATTERIES AND RELATED DC WIRING, RACEWAY, OVER CURRENT PROTECTION AND OTHER DC COMPONENTS BY OTHERS.
 - PROVIDE TWO HORIZONTAL AND TWO VERTICAL RUNS OF 2-1/2" SQUARE STEEL HINGED COVER WIRE WAY, WITH #10 THWN CU PER PANEL SCHEDULE, FROM EACH PANELBOARD TO EACH POWER SUPPLY RACK. DO NOT EXCEED 30 CURRENT CARRYING WIRES PER WIRE WAY RUN. PROVIDE FRAMING AS REQUIRED TO SUPPORT WIRE WAY RUNS. PROVIDE FITTINGS AND FRAMING AS NECESSARY TO CONNECT VERTICAL WIRE WAY RUNS AND CONDUCTORS TO REAR OF POWER SUPPLY SHELVES. FRAMING SHALL BE 2" SQUARE STEEL MECHANICAL TUBING, WELDED AND PAINTED TO MATCH POWER SUPPLY RACKS. OPEN SLOTTED TYPE FRAMING OR BOLTED JOINTS WILL NOT BE ACCEPTABLE. SECURE FRAMING TO FLOOR AND STRUCTURAL CEILING TO PROVIDE RIGID SUPPORT.
 - A SIGNIFICANT AMOUNT OF DC AND SIGNAL WIRING AND RACEWAY WILL BE INSTALLED BY OTHERS. CONTRACTOR SHALL COORDINATE WORK PROVIDED UNDER THIS CONTRACT WITH OWNER'S DESIGNATED REPRESENTATIVE FOR THAT WORK.
 - PROVIDE A JUNCTION BOX WITH PENDANT RECEPTACLE ABOVE EVERY THIRD EQUIPMENT RACK AS SHOWN. FLEX LENGTH SHALL ALLOW PENDANT RECEPTACLE TO REACH FLOOR. COIL FLEX OVERHEAD AT JUNCTION BOX TO CLEAR AREA BELOW CEILING LINE. FIELD COORDINATE EXACT LOCATION OF JUNCTION BOXES WITH OWNER.



EXISTING FLOOR PLAN WITH MODIFICATIONS
SCALE: 1/4" = 1'-0"

DETAIL 6
NTS

SOME INFORMATION ON THIS DRAWING IS TAKEN FROM DRAWINGS PRODUCED BY INGLE, CAMPBELL, MOSES & ASSOCIATES, INC. WITH THEIR PERMISSION AND REVISED BY GRU.

GAINESVILLE REGIONAL UTILITIES
ENERGY DELIVERY ENGINEERING
3805 NW 97 BLVD.
GAINESVILLE, FLORIDA 32614-7117
(352) 334-3600 EXT. 6066

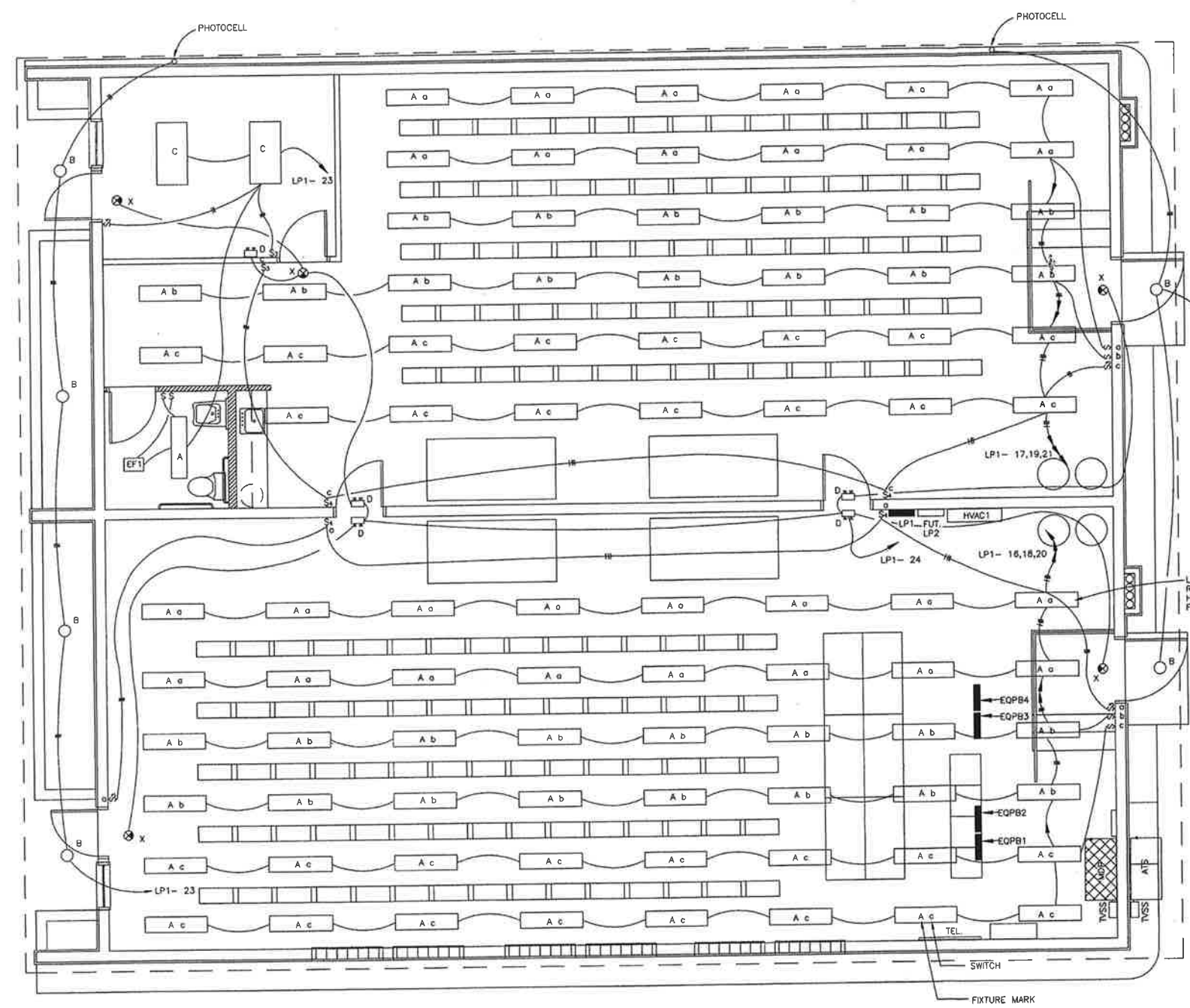


REVISIONS:	DATE	ENG.	CHECKED	RELATED TRACINGS	Request Transfer/Remove	LOOP/RADIAL #	RE-DESIGNED BY: OHH
					<input type="checkbox"/> Yes <input type="checkbox"/> No <input type="checkbox"/> CATV		APPROVED BY: WTB
				Crew Foreman as Built Date	<input type="checkbox"/> Yes <input type="checkbox"/> No Location Required	Reviewed As Built Date	RE-DRAWN BY: OHH
				General Foreman as Built Date	<input type="checkbox"/> Yes <input type="checkbox"/> No Searched By	Approved As Built Date	CHECKED BY: RIL

RENOVATION FOR GRUCOM - HANGER BUILDING
RADIO EQUIPMENT SUBSTATION
ACAD FILE NAME: GRUCOM HANGER BUILDING.DWG
301 SW 5th STREET

SCALE 1"=4'	SHEET
MAP No. 4060	E-2
DATE 01/04/01	OF
CIRCUIT No. XXX	4
JOB NUMBER	
1310P	

NORTH



LIGHTING PLAN
SCALE: 1/4" = 1'-0"

LIGHTING FIXTURE SCHEDULE	
A	METALUX V12232 WITH 2-T8 LAMPS, ELECTRONIC BALLAST WITH < 10% THD. PROVIDE UNISTRUT SUPPORT.
B	SURFACE MOUNT FIXTURE WITH 2-13 WATT T8 LAMPS AND UL LISTED FOR WET LOCATIONS. ELECTRODEX 2020-2-P-13-A-0-C-18
C	RECESSED 2'x4' GRID FIXTURE WITH 4-32 WATT T-8 LAMPS, K-12 LENS, AND ELECTRONIC BALLASTS WITH < 10% THD. LITHONIA 2GT-4-32-A12-120.
D	EMERGENCY BATTERY LIGHTING UNIT WITH 2-18 WATT LAMPS AND WET LEAD-ACID BATTERIES. LITHONIA TITAN ELT 180 N1812.
X	EXIT SIGN, TOP OR BACK MOUNTED, GREEN LETTERS, AND 90 MINUTE BATTERY UNIT. LITHONIA LPR-B-1-GW -120/277-EL-N-TM.

SOME INFORMATION ON THIS DRAWING IS TAKEN FROM DRAWINGS PRODUCED BY INGLEY, CAMPBELL, MOSES & ASSOCIATES, INC. WITH THEIR PERMISSION AND REVISED BY GRU.

GAINESVILLE REGIONAL UTILITIES
ENERGY DELIVERY ENGINEERING
3805 NW 97 BLVD.
GAINESVILLE, FLORIDA 32614-7117
(352) 334-3600 EXT. 6068



REVISIONS:	DATE	ENG.	CHECKED	RELATED TRACINGS	Request Transfer/Remove	LOOP/RADIAL #	RE-DESIGNED BY: OH1
					SET #1 CMT		APPROVED BY: WTS
					Location Required		RE-DRAWN BY: OH1
					Checked By		CHECKED BY: RJL
					General Foreman as Built Date		Reviewed As Built Date
					Checked By		Approved As Built Date

RENOVATION FOR GRUCOM - HANGER BUILDING
RADIO EQUIPMENT SUBSTATION
ACAD FILE NAME: GRUCOM HANGER BUILDING.DWG
301 SW 5th STREET

SCALE	SHEET
1"=4'	E-3
MAP No. 4050	OF
DATE 01/04/01	4
CIRCUIT No. XXX	
JOB NUMBER	
1310P	

