

LEGISLATIVE #

120178D



EXHIBIT
 1
 sheets

Project Site
 222.82 Acres
 A Portion of Tax Parcel #175691-000-000



Legend
 Project Site
 Alachua County Tax Parcels

CHW Causseaux, Hewett, & Waipole, Inc.
 Engineering • Surveying • Planning
 6011 NW 1st Place Gainesville, Florida 32607
 Phone: (352) 331-1976 Fax: (352) 331-2476
<http://www.chw-inc.com>

NORTH

Illustration by: 3/07/09
 Project: 120178D
 Date: 3/10/09
 Scale: 1" = 300'
 Author: J. Waipole
 Checker: J. Waipole
 Date: 3/10/09
 Title: City of Gainesville
 City of Gainesville, 1983

**City of Gainesville
 RTS Public Services (PS) Rezoning**

ILLUSTRATION BY:
 AERIAL, 1/04/09

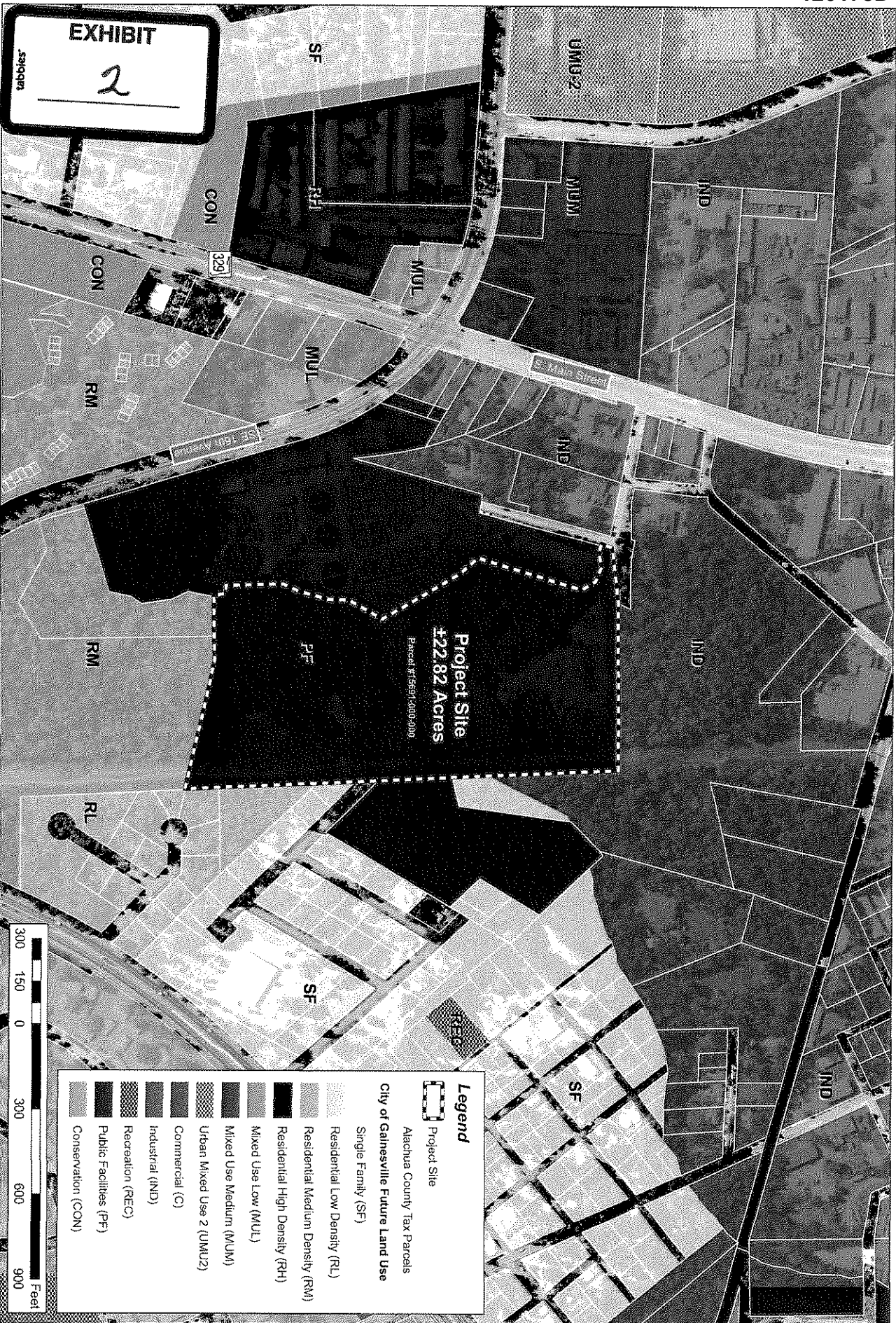
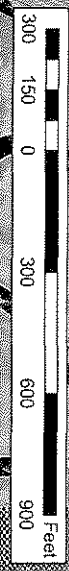


EXHIBIT
 2

Legend

- Project Site
- Alachua County Tax Parcels
- City of Gainesville Future Land Use
 - Single Family (SF)
 - Residential Low Density (RL)
 - Residential Medium Density (RM)
 - Residential High Density (RH)
 - Mixed Use Low (MUL)
 - Mixed Use Medium (MUM)
 - Urban Mixed Use 2 (UMU2)
- Conservation (CON)
- Public Facilities (PF)
- Recreation (REC)
- Industrial (IND)
- Commercial (C)
- Recreation (REC)
- Public Facilities (PF)
- Conservation (CON)



Causseaux, Hewett, & Waipole, Inc.
 Engineering • Surveying • Planning
 6811 NW 1st Place Gainesville, Florida 32607
 Phone: (352) 331-1976 Fax: (352) 331-2476
 http://www.chw-inc.com

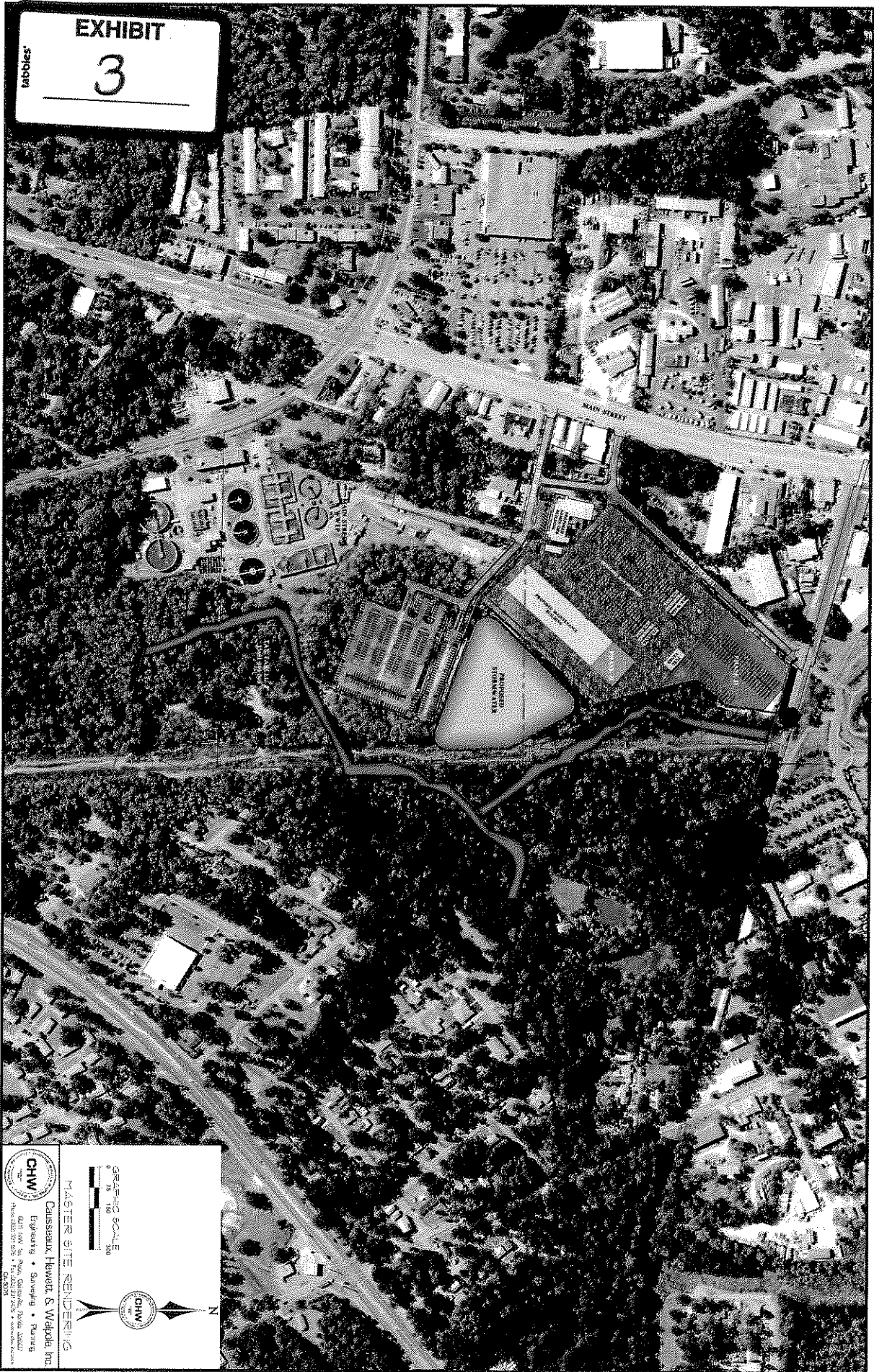
Prepared by: Engineering 025
 Project#: 04115661-100-000
 Drawing: 2A
 Date: 08/08/08
 Scale: As Shown
 Author: [Name]
 Checker: [Name]
 Date: 08/08/08
 Title: City of Gainesville
 Project: PS Rezoning
 Drawing: 2A
 Scale: As Shown
 Date: 08/08/08

City of Gainesville
RTS Public Services (PS) Rezoning



ILLUSTRATION 2A
 RL/M

tabbles'
EXHIBIT
3



GRAPHIC SCALE
0 10 20 30 40 50 60 70 80 90 100

MASTER SITE RENDERING

CHW
Causseaux, Hewitt & Waldoff, Inc.
Engineering • Surveying • Planning
4401 10th St. N.W., Grand Rapids, MI 49503
Phone: 616.771.0100 • Fax: 616.771.0101

CHW
N