

Appendix C Supplemental Documents

Exhibit C-1 Existing Zoning Map

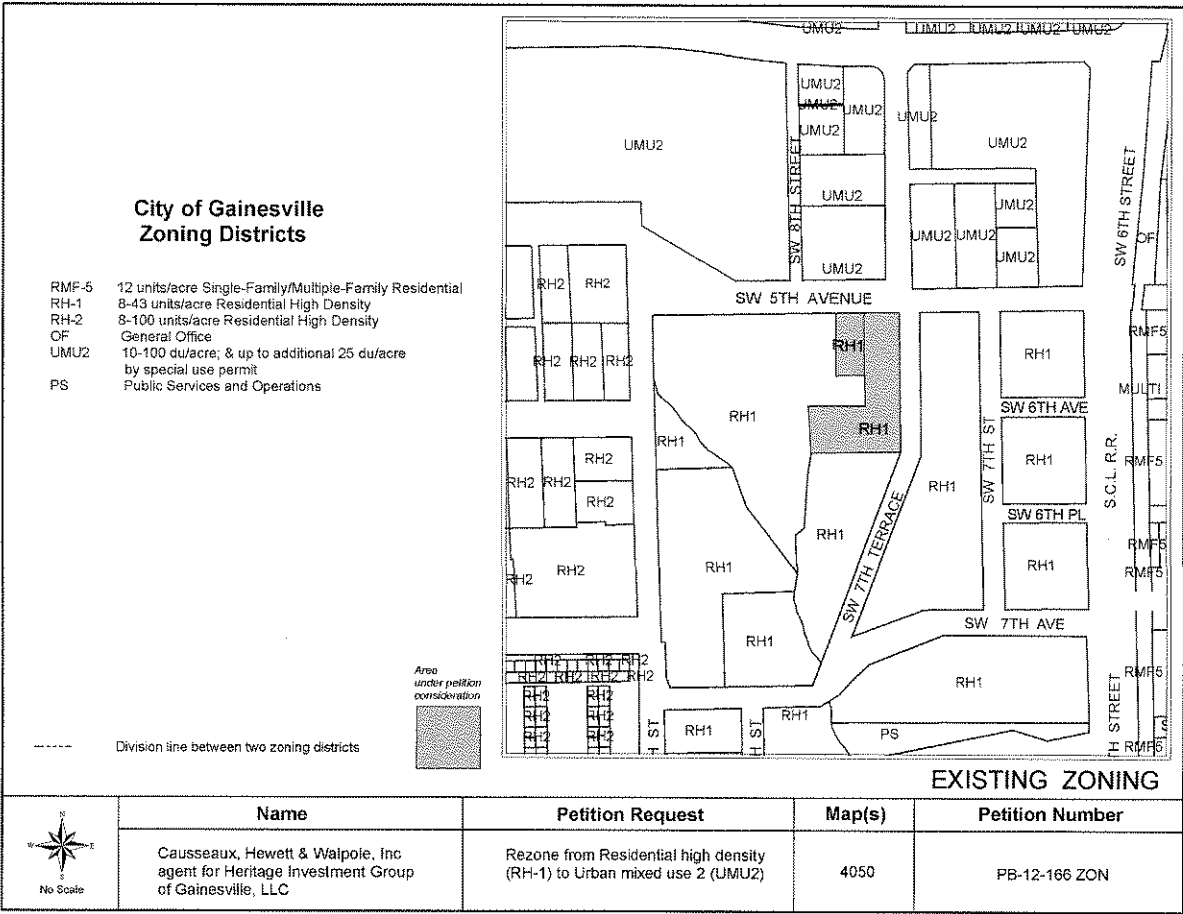


Exhibit C-2 Proposed Zoning Map

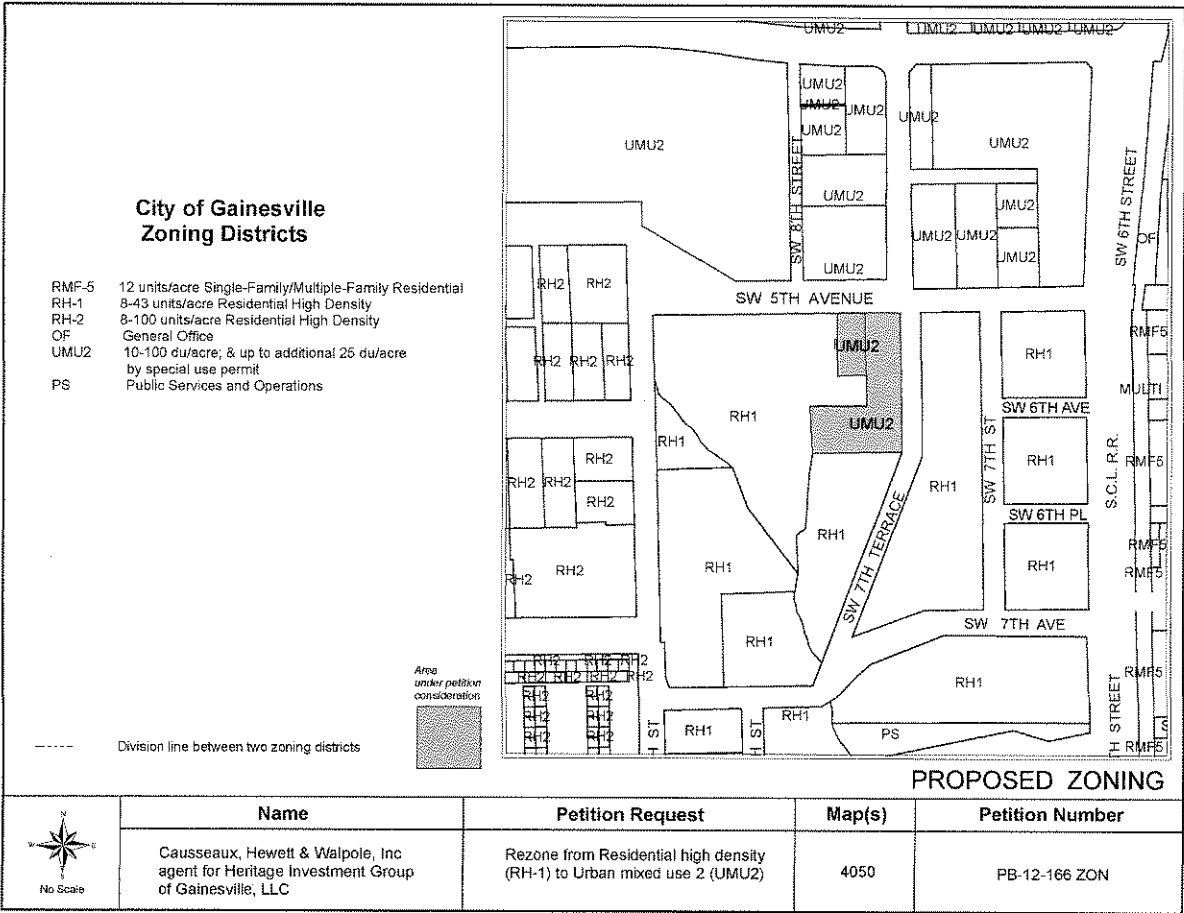
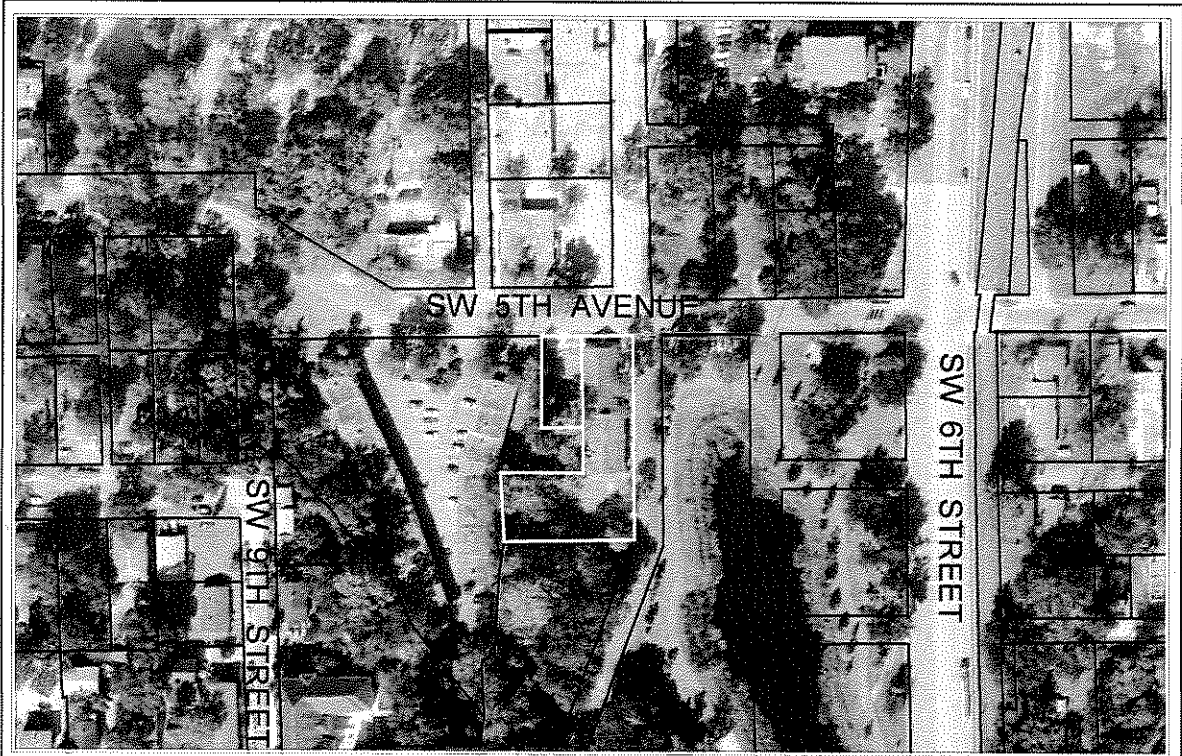



Exhibit C-3 Aerial Map



AERIAL PHOTOGRAPH

	Name	Petition Request	Map(s)	Petition Number
 No Scale	Causseaux, Hewitt & Walpole, Inc agent for Heritage Investments Group of Gainesville, LLC	Rezone from Residential high density (RH-1) to Urban mixed use 2 (UMU2)	4050	PB-12-166 ZON

Petition PB-12-166 ZON
January 24, 2013

Exhibit C-4 Figure 1.0 District Boundary Map – University Heights

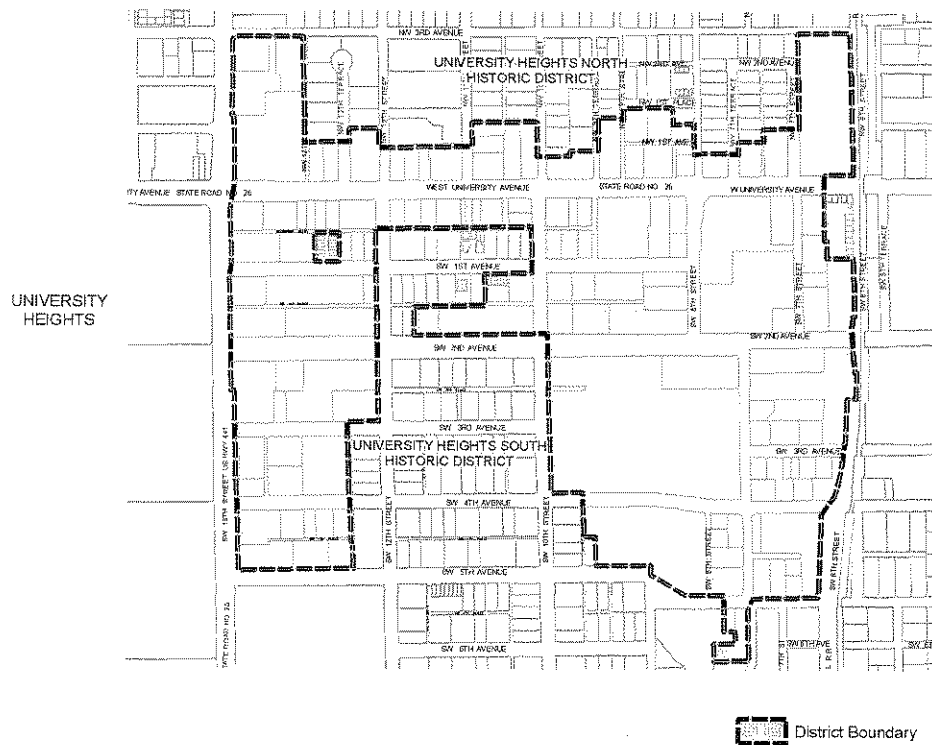


Exhibit C-5 Figure 2.0 Street Types – University Heights

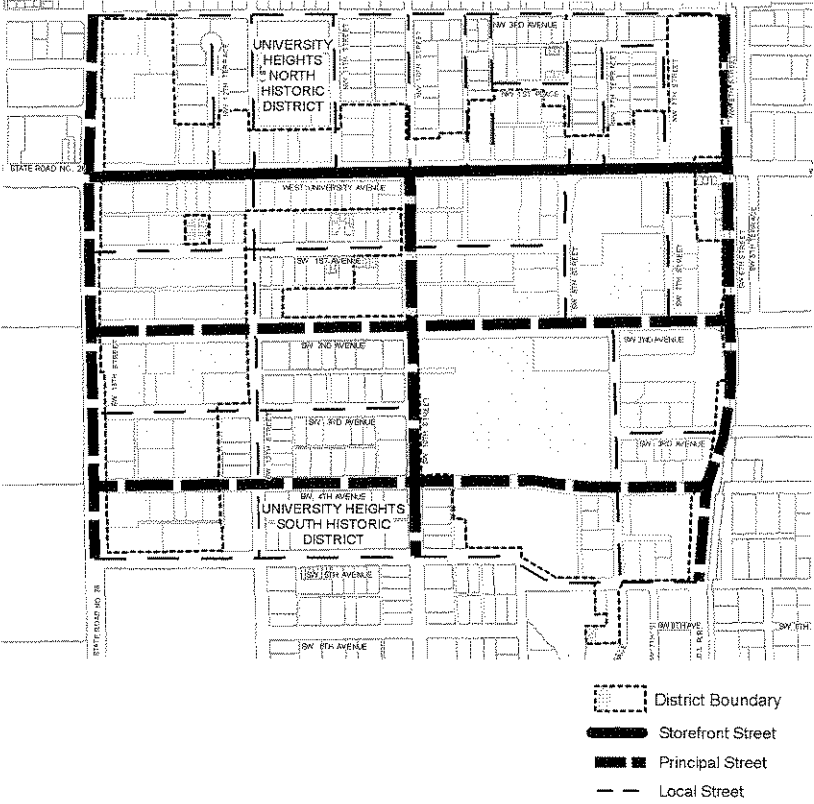


Exhibit C-6 Figure 2.1 Proposed Local Streets – University Heights

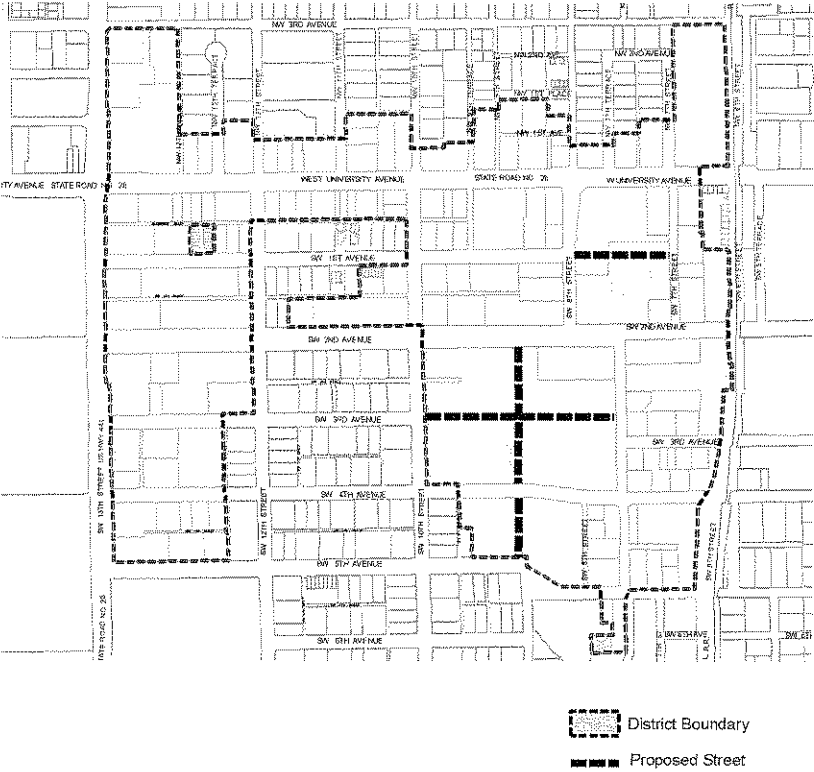


Exhibit C-7 Figure 3.0 Height Limits – University Heights

