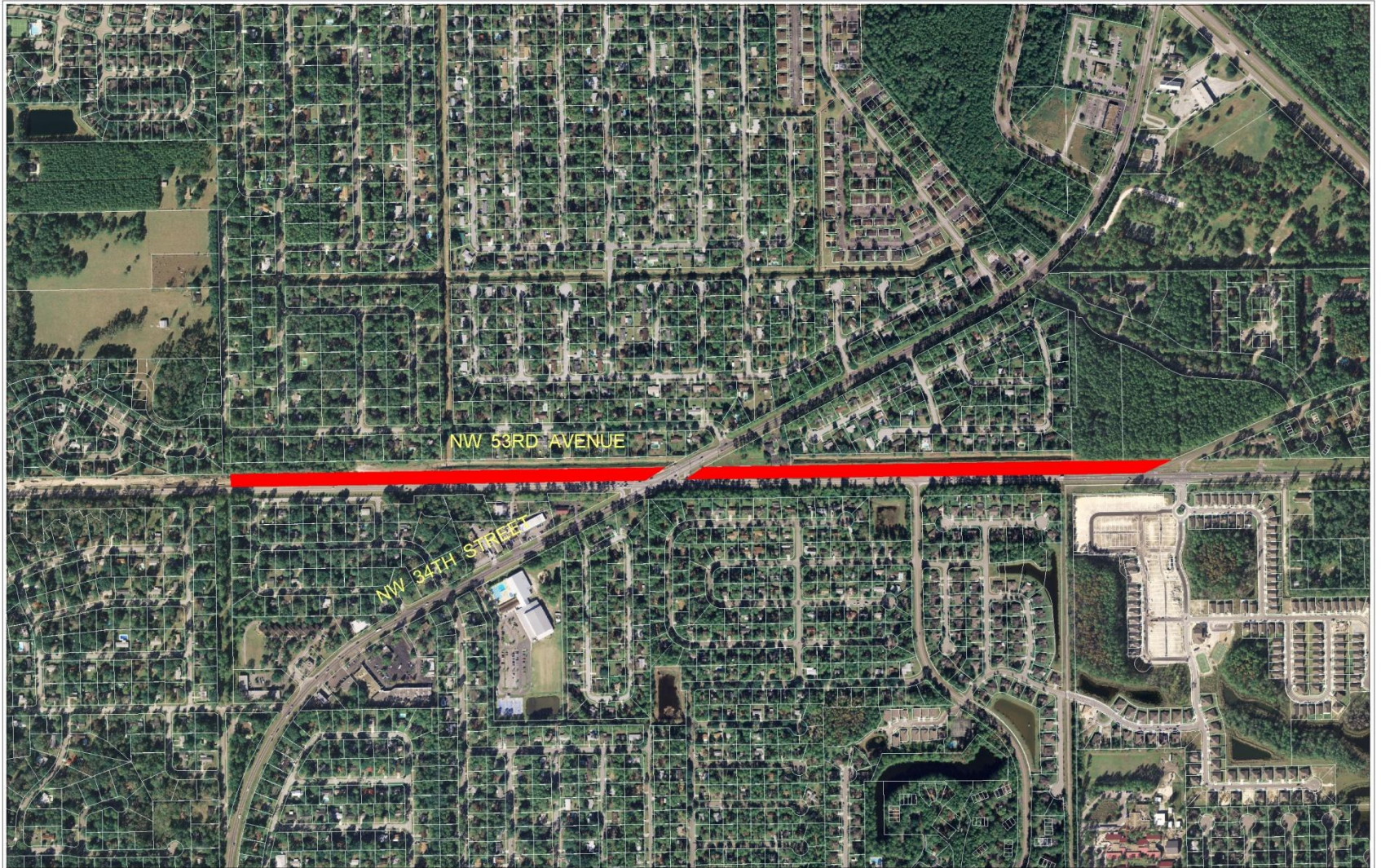


LEGISLATIVE #

110047E

Exhibit B-1 Aerial Map (West)

110047E



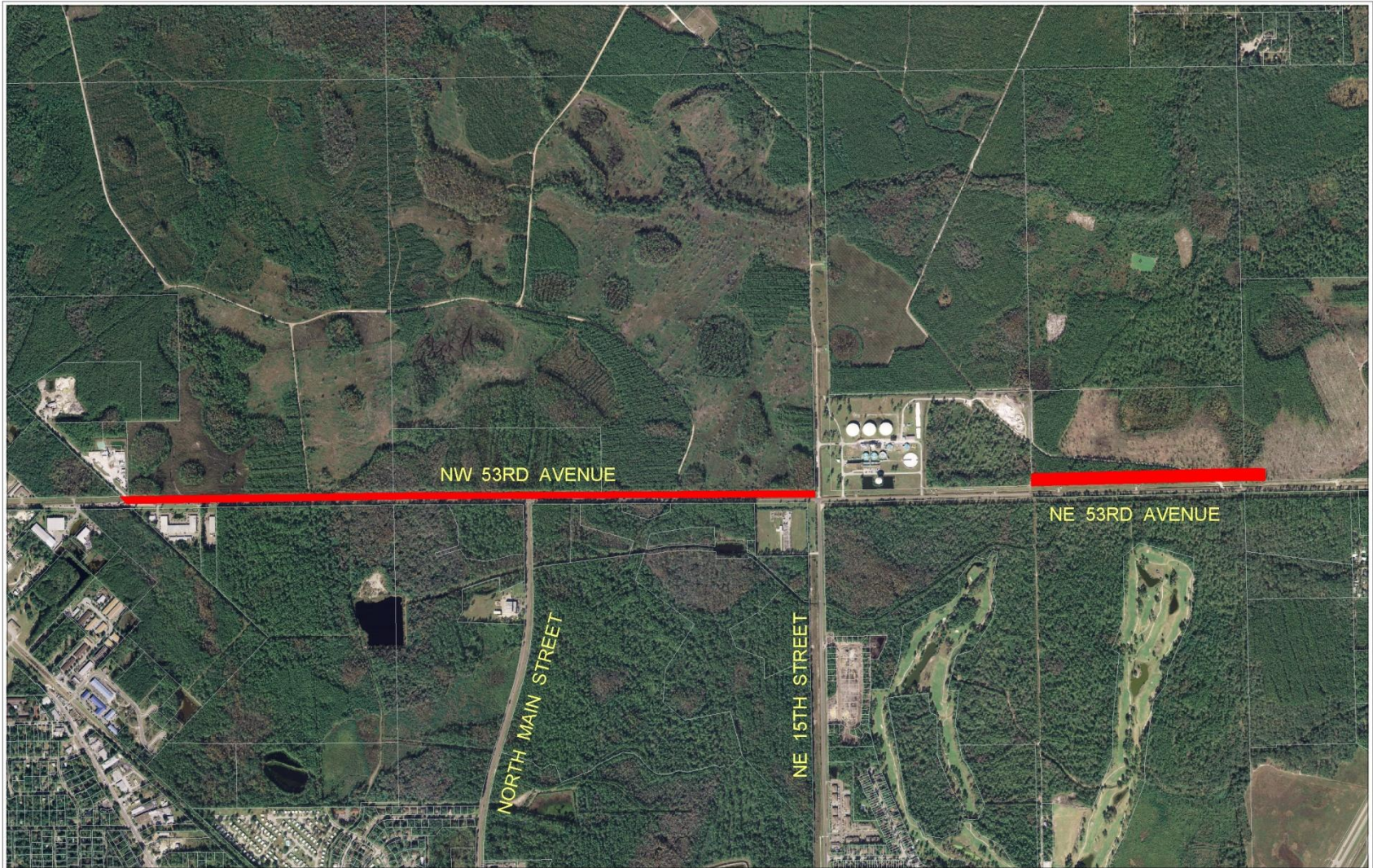
AERIAL PHOTOGRAPH



Name	Petition Request	Map(s)	Petition Number
City of Gainesville, applicant	Change FLUM from City of Gainesville undesignated category to Public Services and Operations (PF) category. Rezone from City of Gainesville undesignated district to Public Services and Operations (PS) district.	3252, 3253, 3255	PB-11-29 LUC PB-11-30 PSZ

Exhibit B-1 Aerial Map (East)

110047E



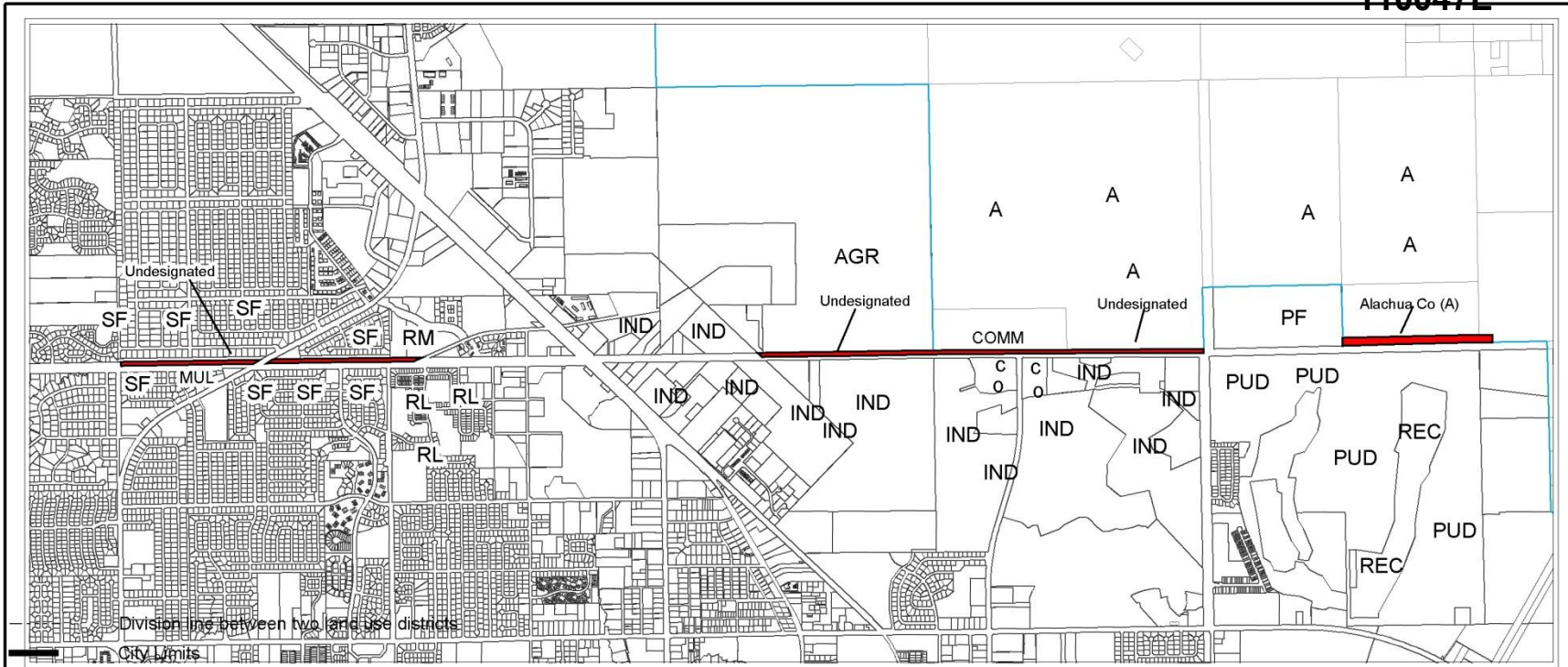
AERIAL PHOTOGRAPH



Name	Petition Request	Map(s)	Petition Number
City of Gainesville, applicant	Change FLUM from Alachua County Rural/Agriculture and undesignated to City of Gainesville Public Facilities (PF). Rezone from Alachua County Agricultural (A) and undesignated to City of Gainesville Public Services and Operations (PS) district.	3252, 3253, 3255	PB-11-29 LUC PB-11-30 PSZ

Exhibit B-2 Existing Land Use

110047E



City of Gainesville Land Use Designations

- SF Single Family (up to 8 du/acre)
- RL Residential Low Density (up to 12 du/acre)
- RM Residential Medium Density (8-30 du/acre)
- RH Residential High Density (8-100 du/acre)
- MUR Mixed Use Residential (up to 75 du/acre)
- MUL Mixed Use Low Intensity (8-30 du/acre)
- MUM Mixed Use Medium Intensity (12-30 du/acre)
- MUH Mixed Use High Intensity (up to 150 du/acre)
- UMU1 Urban Mixed Use 1 (up to 75 du/acre)
- UMU2 Urban Mixed Use 2 (up to 100 du/acre)
- O Office
- C Commercial
- IND Industrial
- E Education

EXISTING LAND USE

- E Education
- REC Recreation
- CON Conservation
- AGR Agriculture
- PF Public Facilities
- PUD Planned Use District

Alachua County Land Use Designations

- A Rural/Agriculture
- CO Conservation
- OF Office
- COM Commercial
- IN Industrial/Manufacturing

*Area
under petition
consideration*




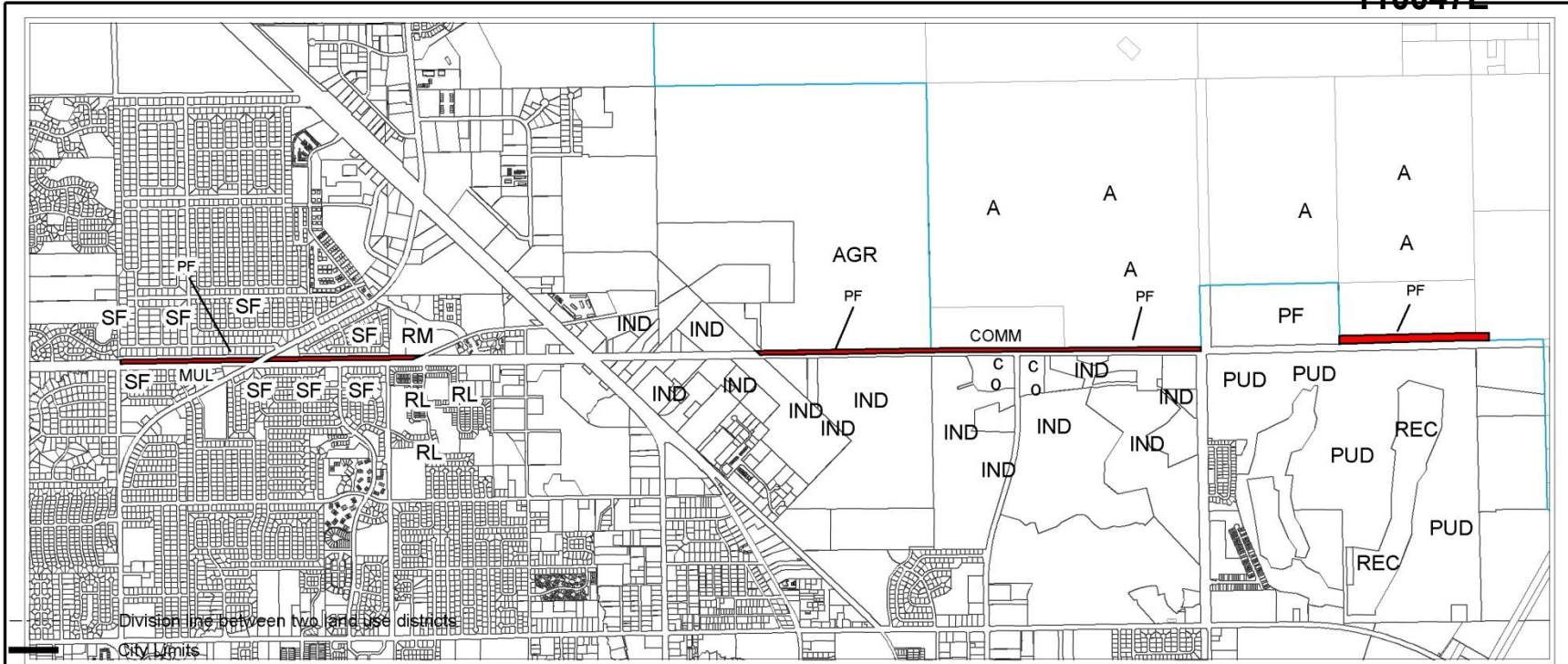
	Petition Number	Parcel Number(s)	Petition Request	
		PB-11-29 LUC	07871-000-000 07874-001-001	Change FLUM from Alachua County Rural/Agriculture and undesignated to City of Gainesville Public Facilities district (PF).

Exhibit B-3 Proposed Land Use

110047E



City of Gainesville Land Use Designations

- SF Single Family (up to 8 du/acre)
- RL Residential Low Density (up to 12 du/acre)
- RM Residential Medium Density (8-30 du/acre)
- RH Residential High Density (8-100 du/acre)
- MUR Mixed Use Residential (up to 75 du/acre)
- MUL Mixed Use Low Intensity (8-30 du/acre)
- MUM Mixed Use Medium Intensity (12-30 du/acre)
- MUH Mixed Use High Intensity (up to 150 du/acre)
- UMU1 Urban Mixed Use 1 (up to 75 du/acre)
- UMU2 Urban Mixed Use 2 (up to 100 du/acre)
- O Office
- C Commercial
- IND Industrial
- E Education

PROPOSED LAND USE


- E Education
- REC Recreation
- CON Conservation
- AGR Agriculture
- PF Public Facilities
- PUD Planned Use District

Alachua County Land Use Designations

- A Rural/Agriculture
- CO Conservation
- OF Office
- COM Commercial
- IN Industrial/Manufacturing

Area
under petition
consideration



	Petition Number	Parcel Number(s)	Petition Request	Prepared by: Planning and Development Services Department City of Gainesville, Florida 5.10.2011
		PB-11-29 LUC	07871-000-000 07874-001-001	