

Senior Recreation Center



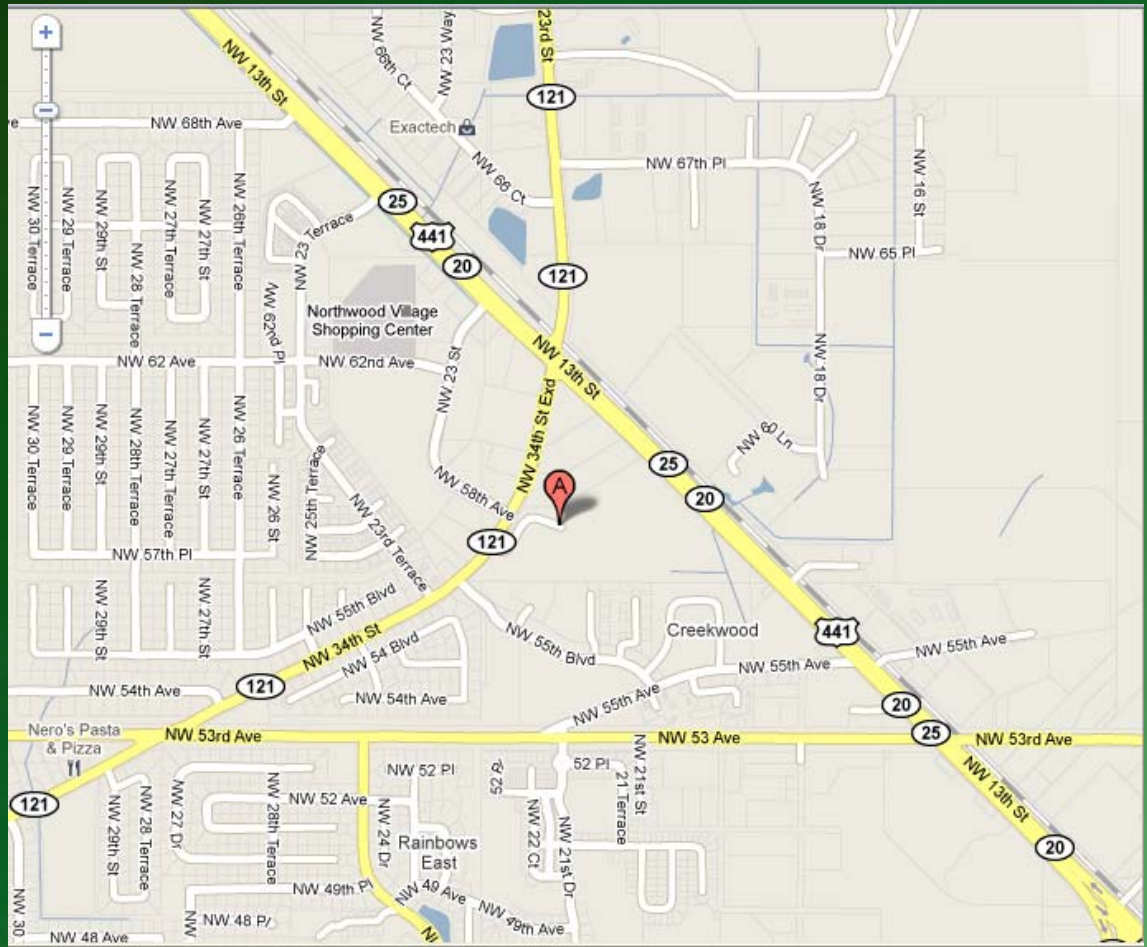
*Alachua County & City of Gainesville
Senior Recreation Center*



Project Location

Northside Park:

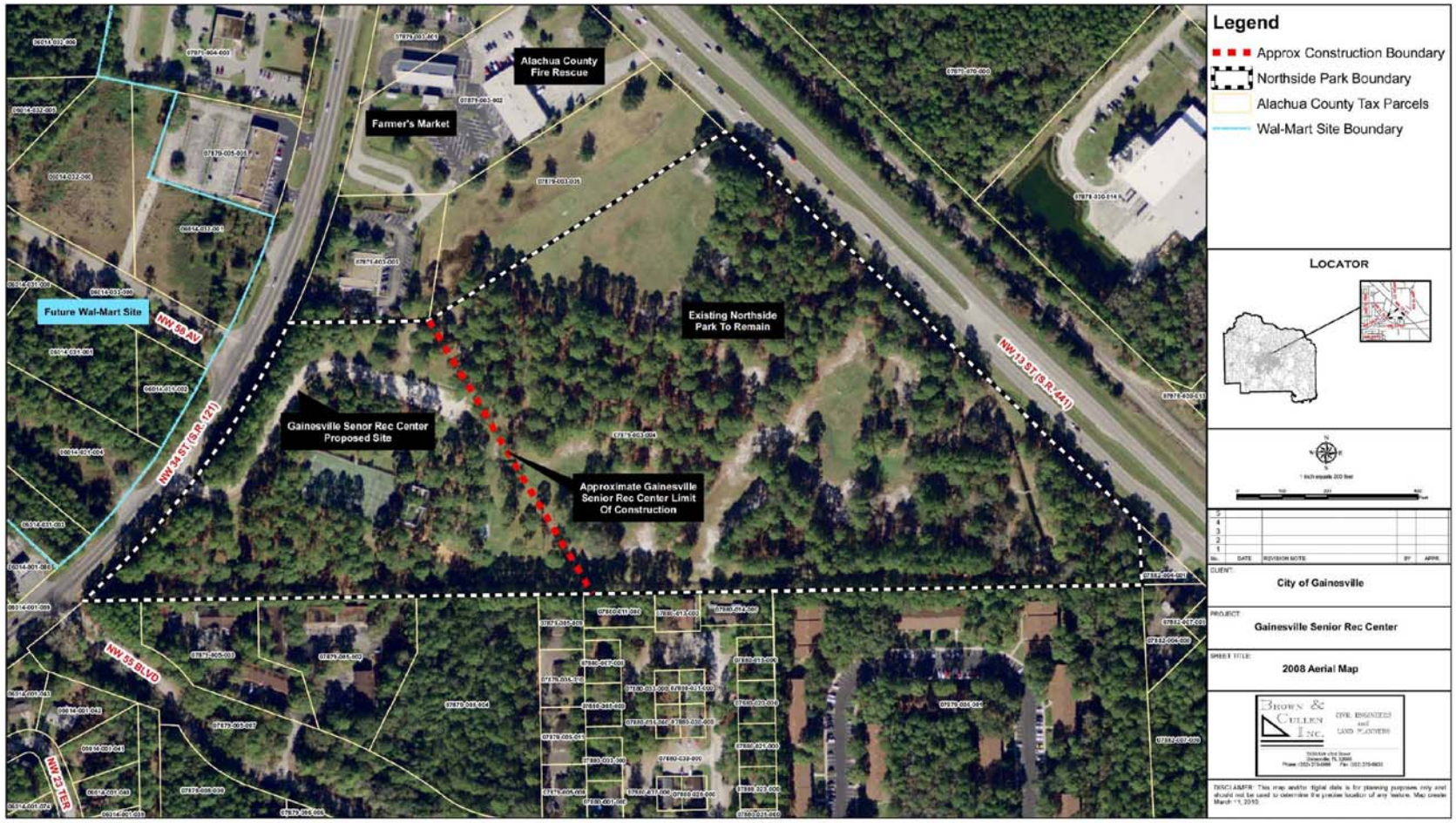
5701 NW 34th Street



Alachua County & City of Gainesville
Senior Recreation Center



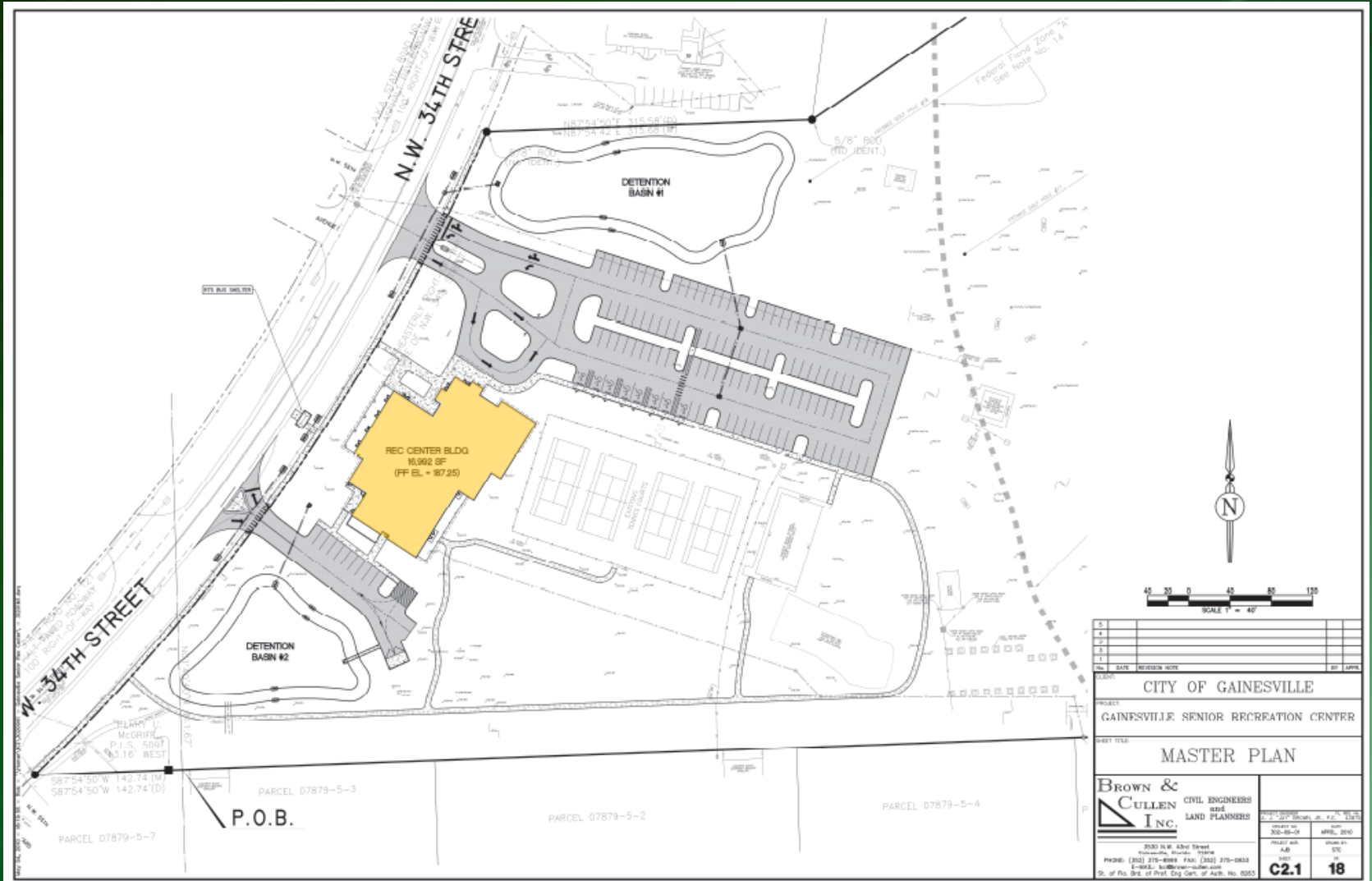
Site Overview



Alachua County & City of Gainesville Senior Recreation Center



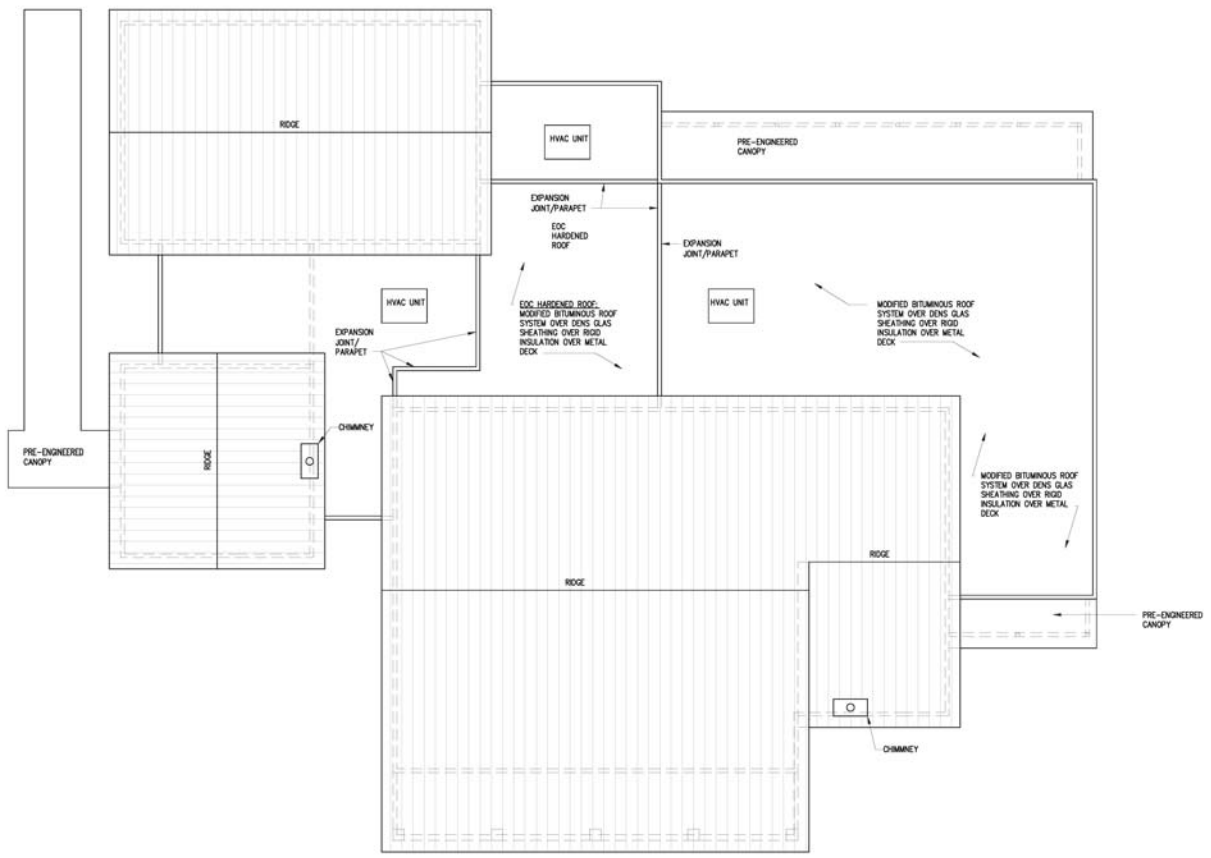
Site Layout



Alachua County & City of Gainesville Senior Recreation Center



Roof Plan



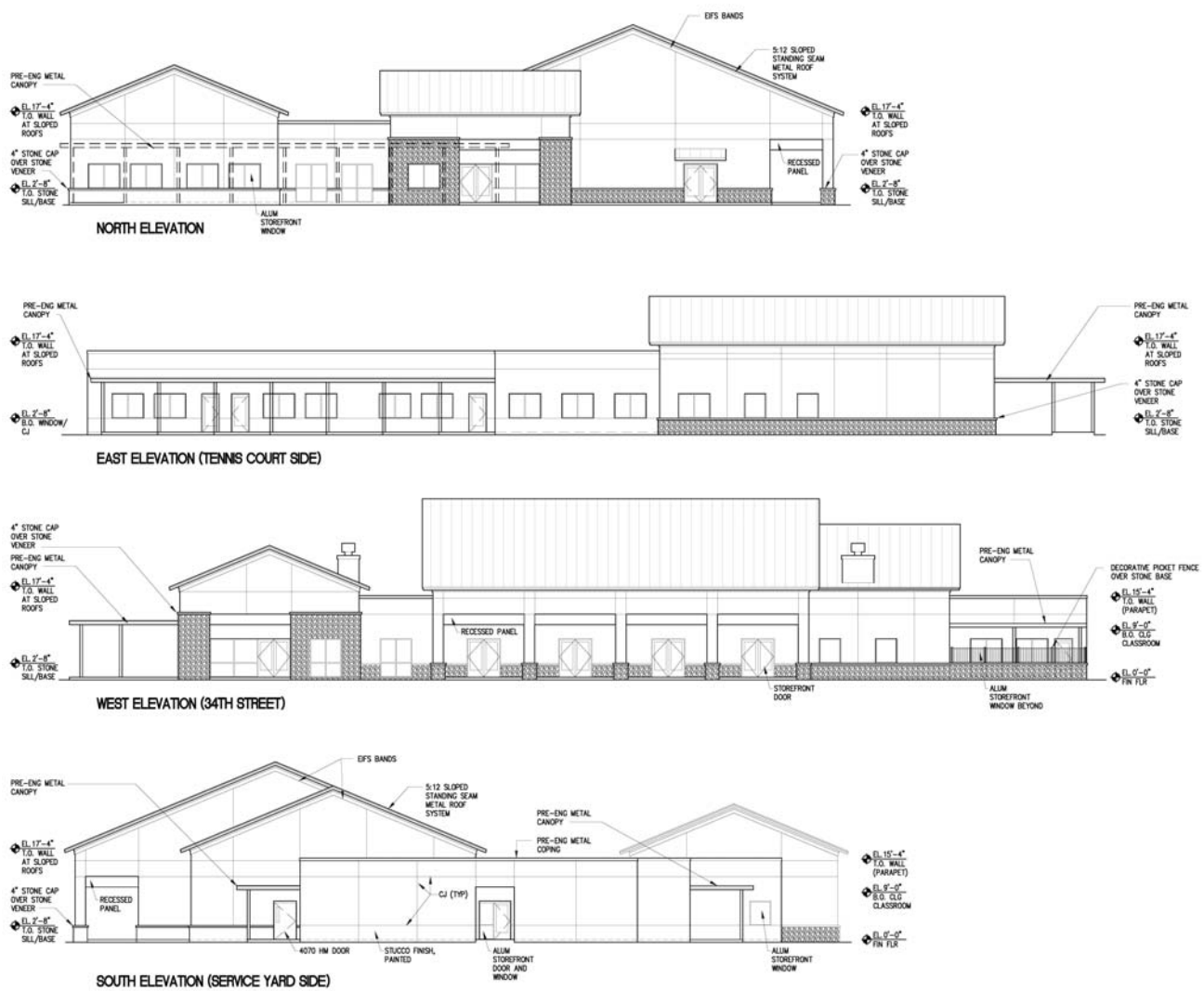
ROOF PLAN



Alachua County & City of Gainesville Senior Recreation Center



Building Elevations



Alachua County & City of Gainesville Senior Recreation Center



3-D Rendering – Northwest Elevation



*Alachua County & City of Gainesville
Senior Recreation Center*



3-D Rendering – Southeast Elevation



*Alachua County & City of Gainesville
Senior Recreation Center*



3-D Rendering – Overhead View



*Alachua County & City of Gainesville
Senior Recreation Center*



LEED Certification

Silver: 50 - 59 Points

| LEED 2009 for New Construction and Major Renovation | | Gainesville Senior Recreation Center | |
|--|-----------|--------------------------------------|--|
| Project Checklist | | 2/10/10 | |
| 17 | 8 | 1 | Possible Points: 26 |
| Sustainable Sites | | | |
| Y | N | ? | |
| Y | | | Prereq 1 Construction Activity Pollution Prevention |
| | | 1 | Credit 1 Site Selection |
| | 5 | | Credit 2 Development Density and Community Connectivity |
| | 1 | | Credit 3 Brownfield Redevelopment |
| 6 | | | Credit 4.1 Alternative Transportation—Public Transportation Access |
| 1 | | | Credit 4.2 Alternative Transportation—Bicycle Storage and Changing Rooms |
| 3 | | | Credit 4.3 Alternative Transportation—Low-Emitting and Fuel-Efficient Vehicles |
| 2 | | | Credit 4.4 Alternative Transportation—Parking Capacity |
| | 1 | | Credit 5.1 Site Development—Protect or Restore Habitat |
| 1 | | | Credit 5.2 Site Development—Maximize Open Space |
| 1 | | | Credit 6.1 Stormwater Design—Quantity Control |
| 1 | | | Credit 6.2 Stormwater Design—Quality Control |
| | 1 | | Credit 7.1 Heat Island Effect—Non-roof |
| 1 | | | Credit 7.2 Heat Island Effect—Roof |
| 1 | | | Credit 8 Light Pollution Reduction |
| 4 | 3 | 3 | Possible Points: 10 |
| Water Efficiency | | | |
| Y | | | Prereq 1 Water Use Reduction—20% Reduction |
| 2 | | 2 | Credit 1 Water Efficient Landscaping |
| | 2 | | Credit 2 Innovative Wastewater Technologies |
| 2 | 1 | 1 | Credit 3 Water Use Reduction |
| 5 | 23 | 7 | Possible Points: 35 |
| Energy and Atmosphere | | | |
| Y | | | Prereq 1 Fundamental Commissioning of Building Energy Systems |
| Y | | | Prereq 2 Minimum Energy Performance |
| Y | | | Prereq 3 Fundamental Refrigerant Management |
| 3 | 16 | | Credit 1 Optimize Energy Performance |
| | 7 | | Credit 2 On-Site Renewable Energy |
| | 2 | | Credit 3 Enhanced Commissioning |
| 2 | | | Credit 4 Enhanced Refrigerant Management |
| | 3 | | Credit 5 Measurement and Verification |
| | 2 | | Credit 6 Green Power |
| 3 | 7 | 4 | Possible Points: 14 |
| Materials and Resources | | | |
| Y | | | Prereq 1 Storage and Collection of Recyclables |
| | 3 | | Credit 1.1 Building Reuse—Maintain Existing Walls, Floors, and Roof |
| | 1 | | Credit 1.2 Building Reuse—Maintain 50% of Interior Non-Structural Elements |
| 1 | | 1 | Credit 2 Construction Waste Management |
| | 2 | | Credit 3 Materials Reuse |
| 12 | 2 | 1 | Possible Points: 15 |
| Indoor Environmental Quality | | | |
| Y | | | Prereq 1 Minimum Indoor Air Quality Performance |
| Y | | | Prereq 2 Environmental Tobacco Smoke (ETS) Control |
| 1 | | | Credit 1 Outdoor Air Delivery Monitoring |
| | 1 | | Credit 2 Increased Ventilation |
| 1 | | | Credit 3.1 Construction IAQ Management Plan—During Construction |
| 1 | | | Credit 3.2 Construction IAQ Management Plan—Before Occupancy |
| 1 | | | Credit 4.1 Low-Emitting Materials—Adhesives and Sealants |
| 1 | | | Credit 4.2 Low-Emitting Materials—Paints and Coatings |
| 1 | | | Credit 4.3 Low-Emitting Materials—Flooring Systems |
| 1 | | | Credit 4.4 Low-Emitting Materials—Composite Wood and Agrifiber Products |
| 1 | | | Credit 5 Indoor Chemical and Pollutant Source Control |
| 1 | | | Credit 6.1 Controllability of Systems—Lighting |
| | | 1 | Credit 6.2 Controllability of Systems—Thermal Comfort |
| 1 | | | Credit 7.1 Thermal Comfort—Design |
| 1 | | | Credit 7.2 Thermal Comfort—Verification |
| 1 | | | Credit 8.1 Daylight and Views—Daylight |
| 1 | | | Credit 8.2 Daylight and Views—Views |
| 3 | 1 | 2 | Possible Points: 6 |
| Innovation and Design Process | | | |
| 1 | | | Credit 1.1 Innovation in Design: Green Housekeeping |
| 1 | | | Credit 1.2 Innovation in Design: Education |
| | 1 | | Credit 1.3 Innovation in Design: Water Use Reduction, 40% |
| | 1 | | Credit 1.4 Innovation in Design: Construction Waste Management, 95% |
| | 1 | | Credit 1.5 Innovation in Design: (MAXIMUM 3 EXEMPLARY PTS) |
| 1 | | | Credit 2 LEED Accredited Professional |
| 1 | 2 | 1 | Possible Points: 4 |
| Regional Priority Credits | | | |
| | 1 | | Credit 1.1 Regional Priority: SS2 Development Density/Community Connectivity |
| 1 | | | Credit 1.2 Regional Priority: SS4.1 Alternative Transportation—Public |
| | 1 | | Credit 1.3 Regional Priority: EA 1 - 28% Energy Savings |
| | 1 | | Credit 1.4 Regional Priority: MR Regional Materials 20% |
| 45 | 46 | 19 | Possible Points: 110 |
| Total | | | |
| Certified 40 to 49 points Silver 50 to 59 points Gold 60 to 79 points Platinum 80 to 110 | | | |



Aloha County & City of Gainesville

Senior Recreation Center

