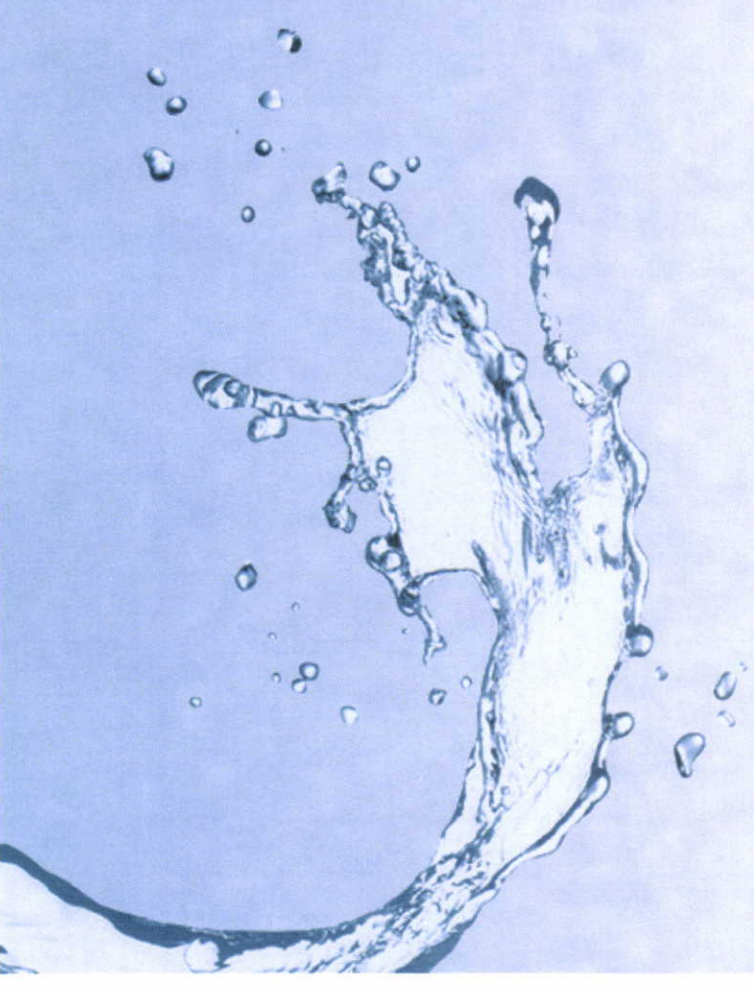


GRU Future Water Supply & Consumptive Use Permit Renewal

GRU100

100 YEARS OF SERVICE | 1912-2012



GRU Background

- GRU supplies public water and provides wastewater treatment for City of Gainesville and portions of Alachua County
- GRU currently serves approximately 189,000 people as well as UF, area hospitals and business
- GRU serves ~3/4 of the population of Alachua County
- GRU within both SJRWMD and SRWMD boundaries

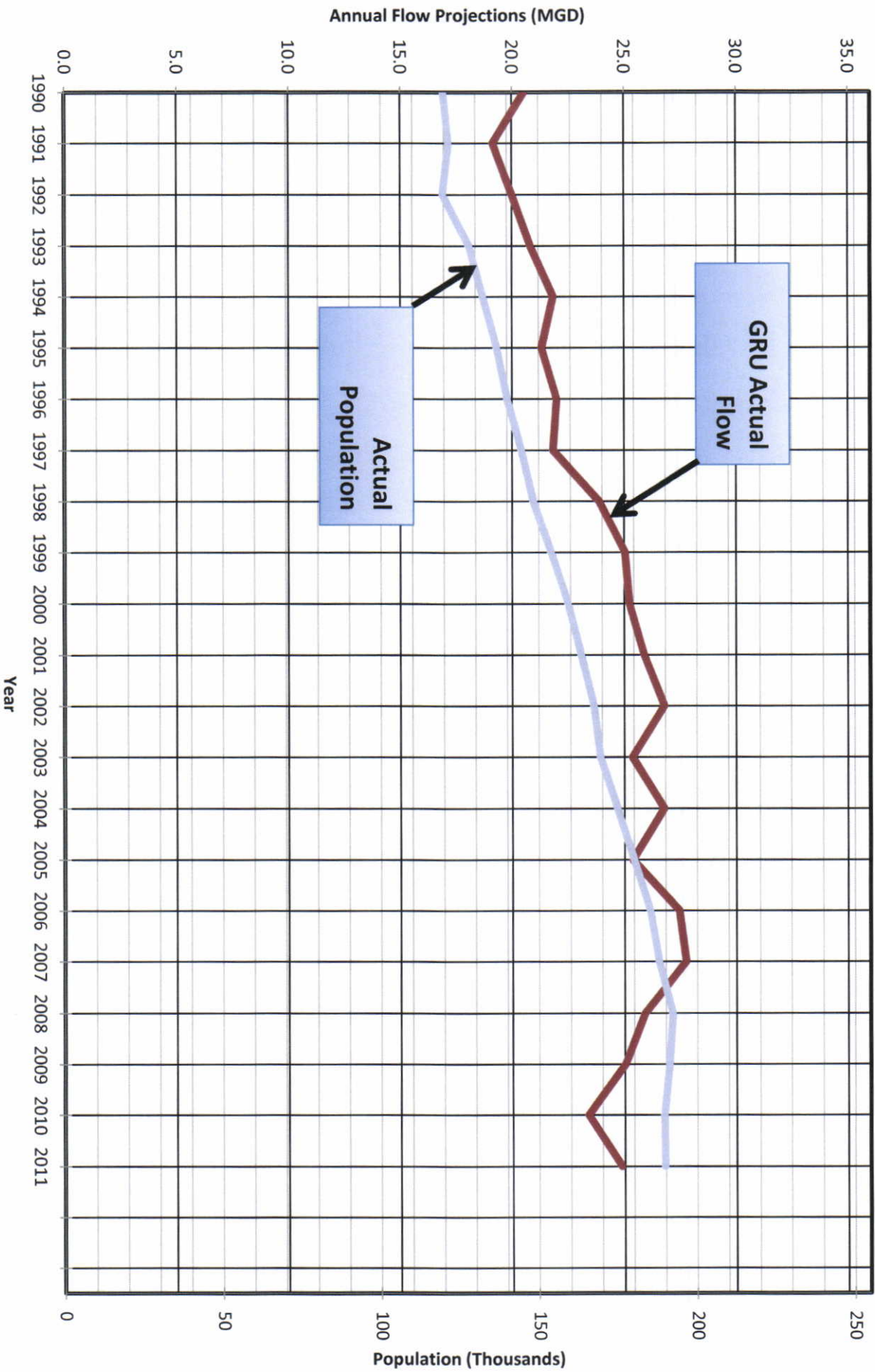


GRU Water Philosophy – The 3 R's

- **Reduce** – Continue to Promote/Encourage Water Conservation
- **Reuse** – Continue to Promote/Encourage Reclaimed Water Use for Irrigation & Cooling Towers as Potable Water Offset
- **Recycle** – Continue to Beneficially Recycle Water to the Floridan Aquifer through Recharge

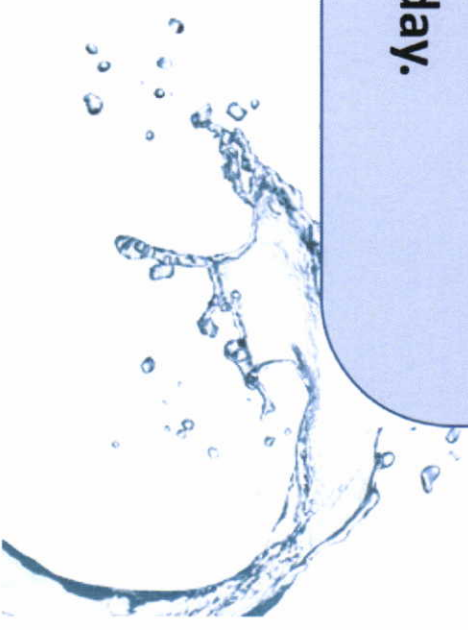
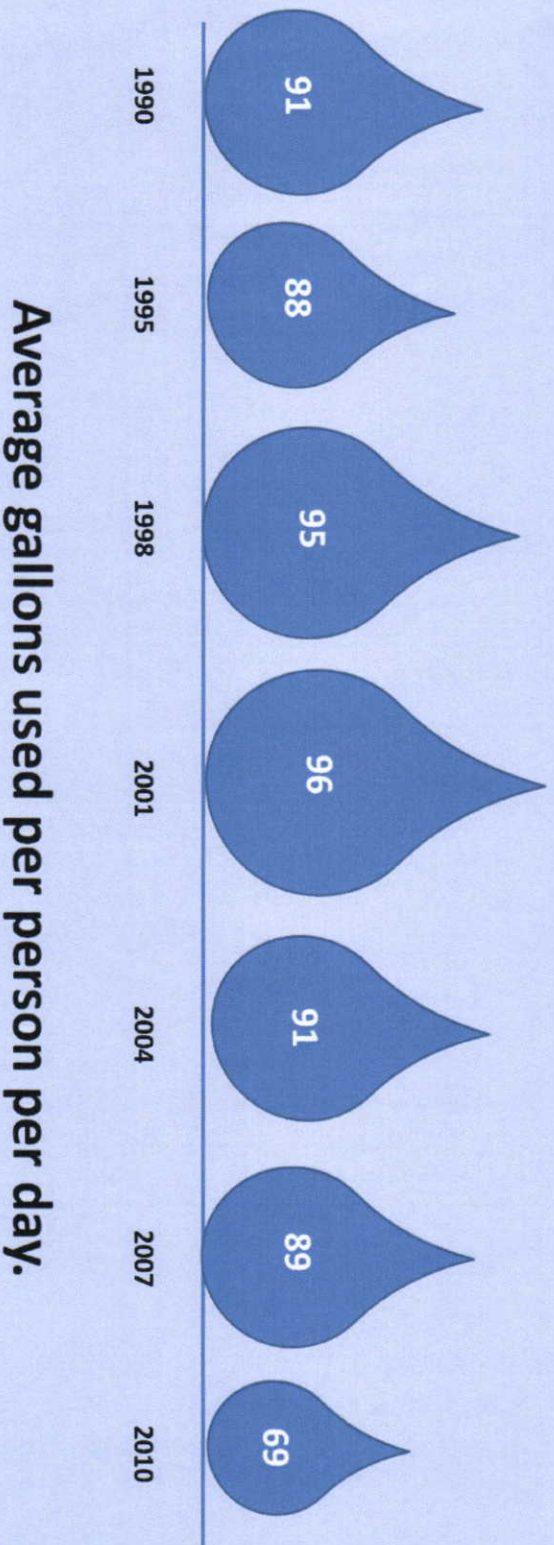


Historic Water Use and Population



Reduce - Water Conservation

Gainesville and Vicinity Public Water Supply – Residential Use



Reuse – Reclaimed Water



Residential & Golf Course Irrigation

- Residential Reclaimed Water Irrigation Offsets Potable Water Use
- GRU Reclaimed Water is used to Irrigate Golf Course thereby eliminating groundwater use

GRU South Energy Center at Shands

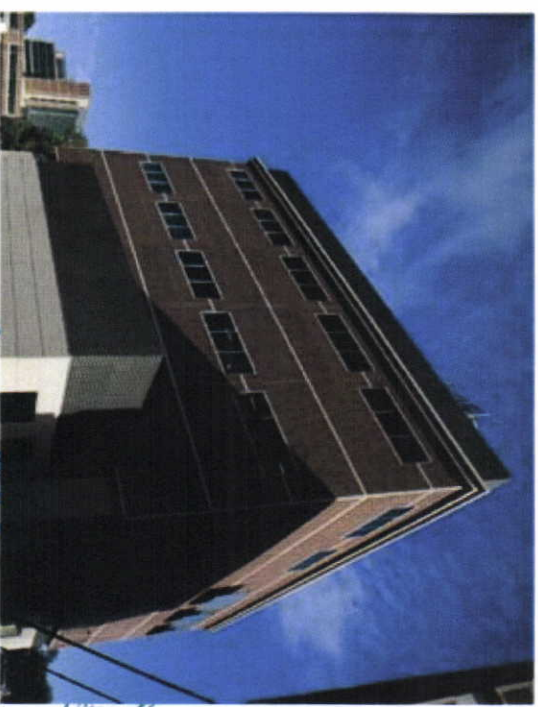
- GRU uses reclaimed water for cooling in Chilled Water Production.
- Shands uses reclaimed water for irrigation.

Reuse Incentives for New Development

- RCW Service Area

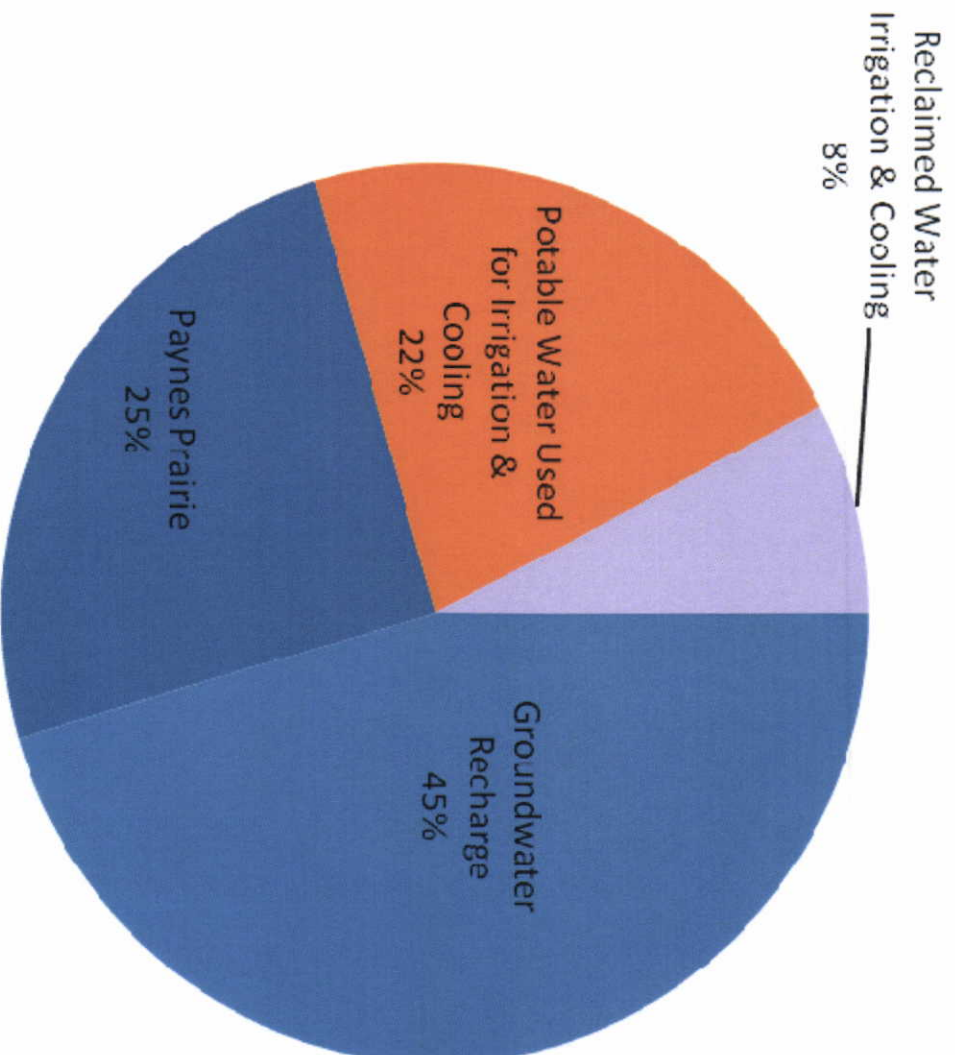


100 YEARS OF SERVICE | 1912-2012



Recycle – Aquifer Recharge

70% of water withdrawn at Murphree is returned to the aquifer



Consumptive Use Permit

- GRU's current CUP issued by SJRWMD in August 2009 and expires in August 2014
 - Allocation = 30 mgd
- GRU initiating CUP renewal to ensure water supply availability to support smart growth and continue to provide reliable service
- SJRWMD will be sole permitting authority, but working closely with SRMWD and others



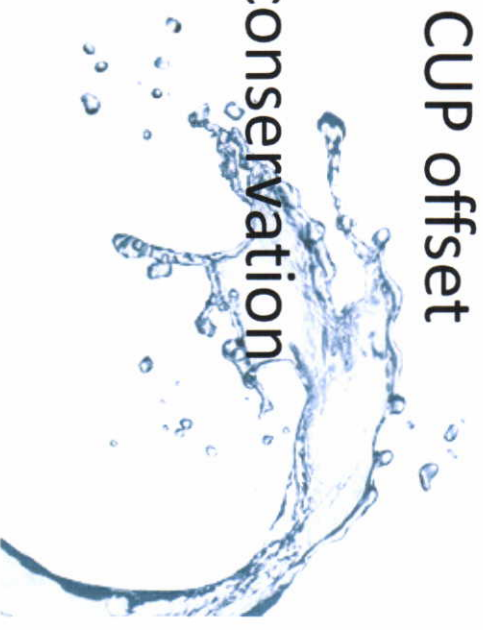
Anticipated Growth and Water Demand

- GRU anticipates population growth ~55,000 through 2032
- Gainesville Innovation District spurring economic growth
- Projected 2032 demand ~32.7 mgd, based upon SJRWMD water projection methodology

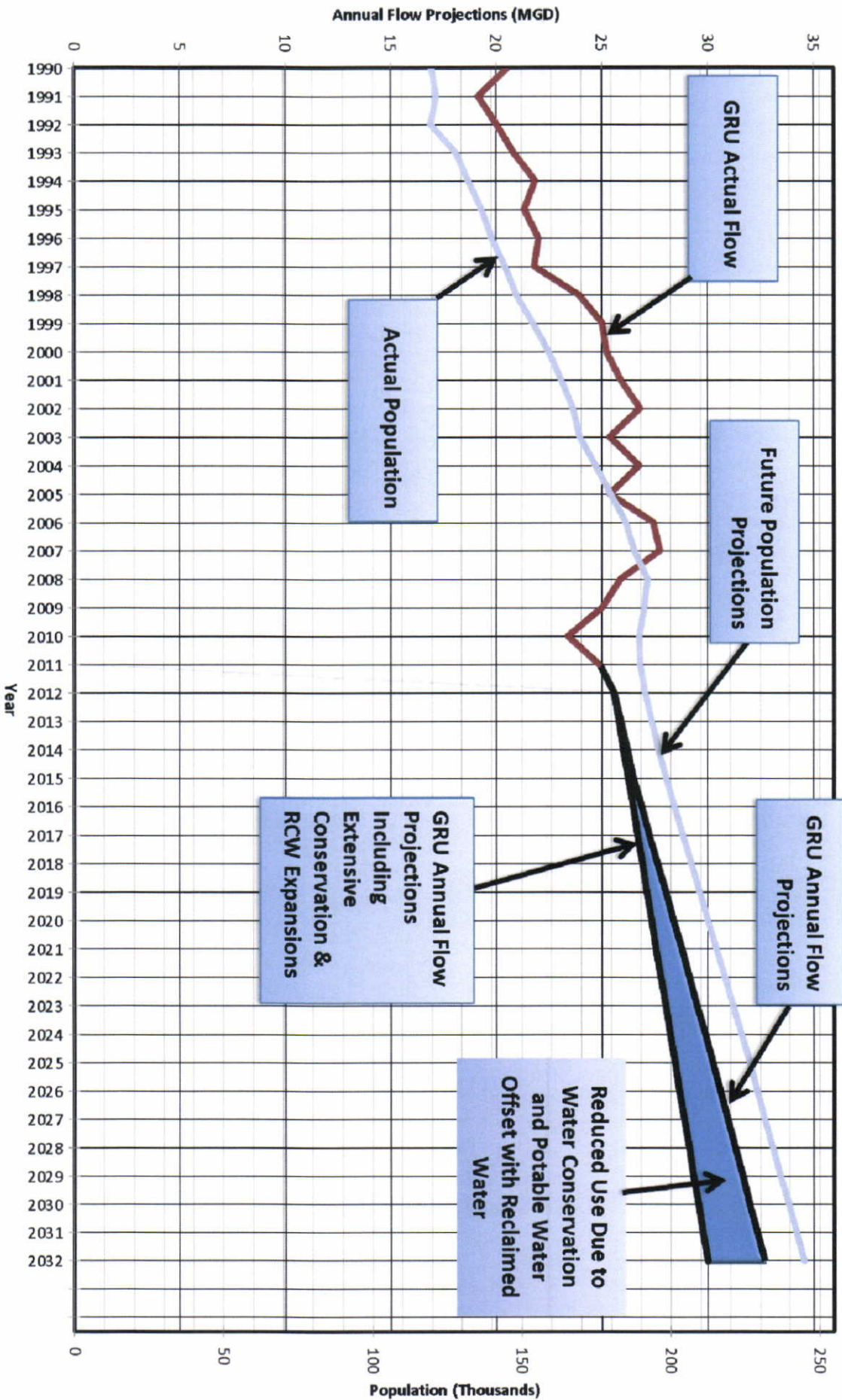


GRU's Renewed CUP

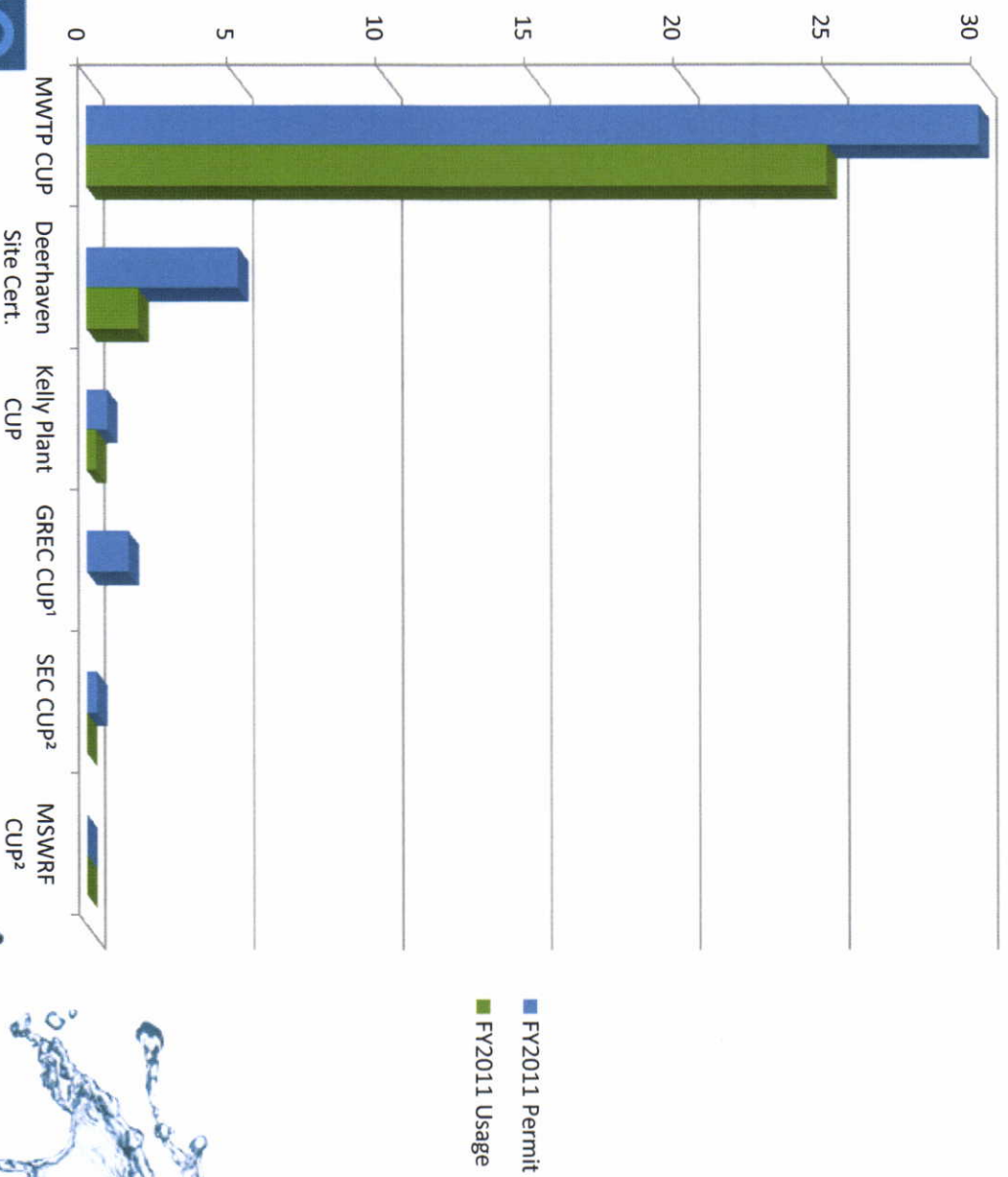
- GRU requesting a base allocation of 30 MGD from Floridan aquifer – renewal of existing allocation for 20-year CUP
- Committed to conservation measures & expansion of RCW, but need ways to increase allocation as necessary
- Examples of increased allocation:
 - Golf Course, agricultural or industrial CUP offset with GRU RCW
 - Agricultural partnership to promote conservation



Reduced Use Due to Water Conservation and Potable Water Offset Due to RCW

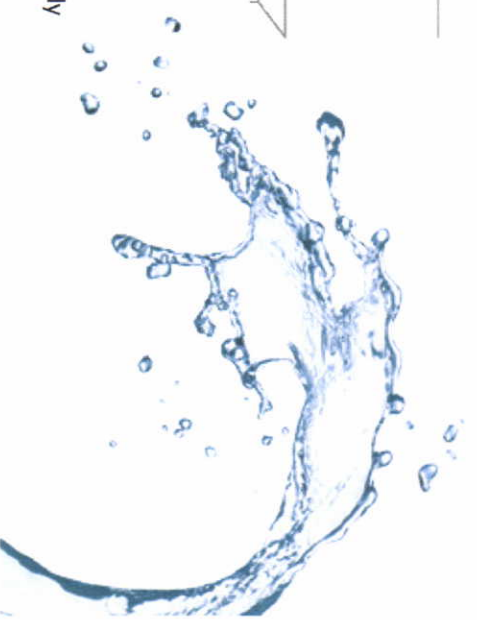


GRU Water Uses and Permits



100 YEARS OF SERVICE | 1912-2012

- 1) GREC CUP – groundwater use is anticipated to begin in late 2013
- 2) SEC & MSWRF CUP – no groundwater use, because for backup use only



Alachua County Ordinance

- Alachua County Ordinance #2012-08
 - Year-Round Water Conservation Measures and Water Shortage Regulations
- Gives Alachua County the authority to enforce Water Shortage Orders and Water Shortage Emergencies within the City limits
- Alachua County currently has enforcement authority on year-round watering restrictions



Recommendation

1. The City Commission authorize the General Manager or his designee to negotiate and execute contracts necessary to obtain the CUP not to exceed \$750,000.
2. The City Commission direct the City Attorney to draft a Resolution to opt into the Alachua County Ordinance for enforcement of Water Shortage Orders and Water Shortage Emergencies.

