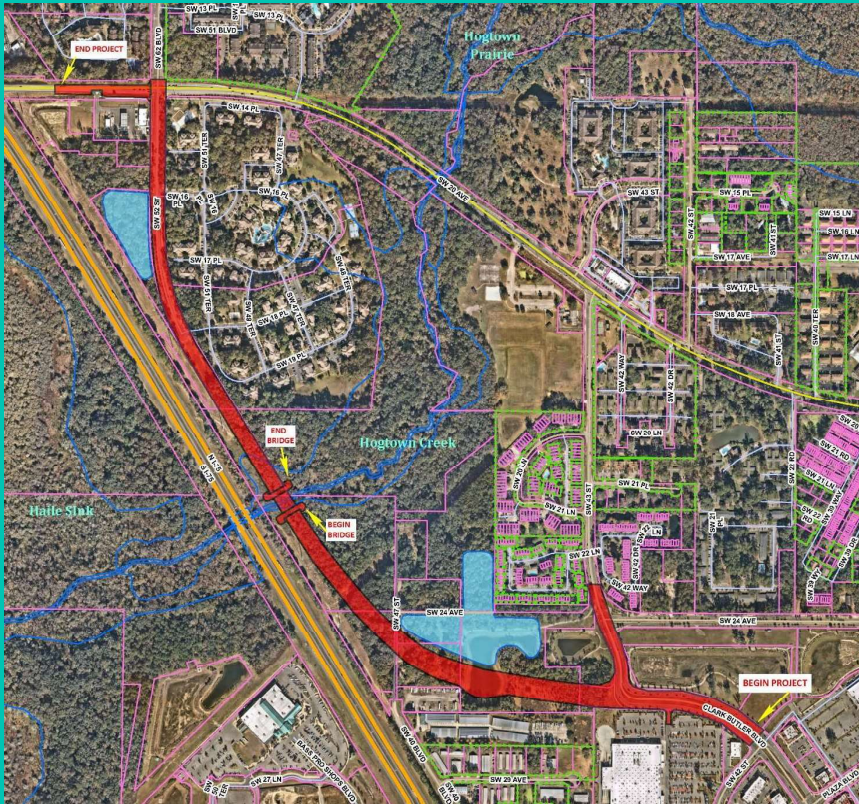


City of
Gainesville

SW 62nd Boulevard Connector

Brian M. Singleton, P.E., City Engineer
City of Gainesville Public Works

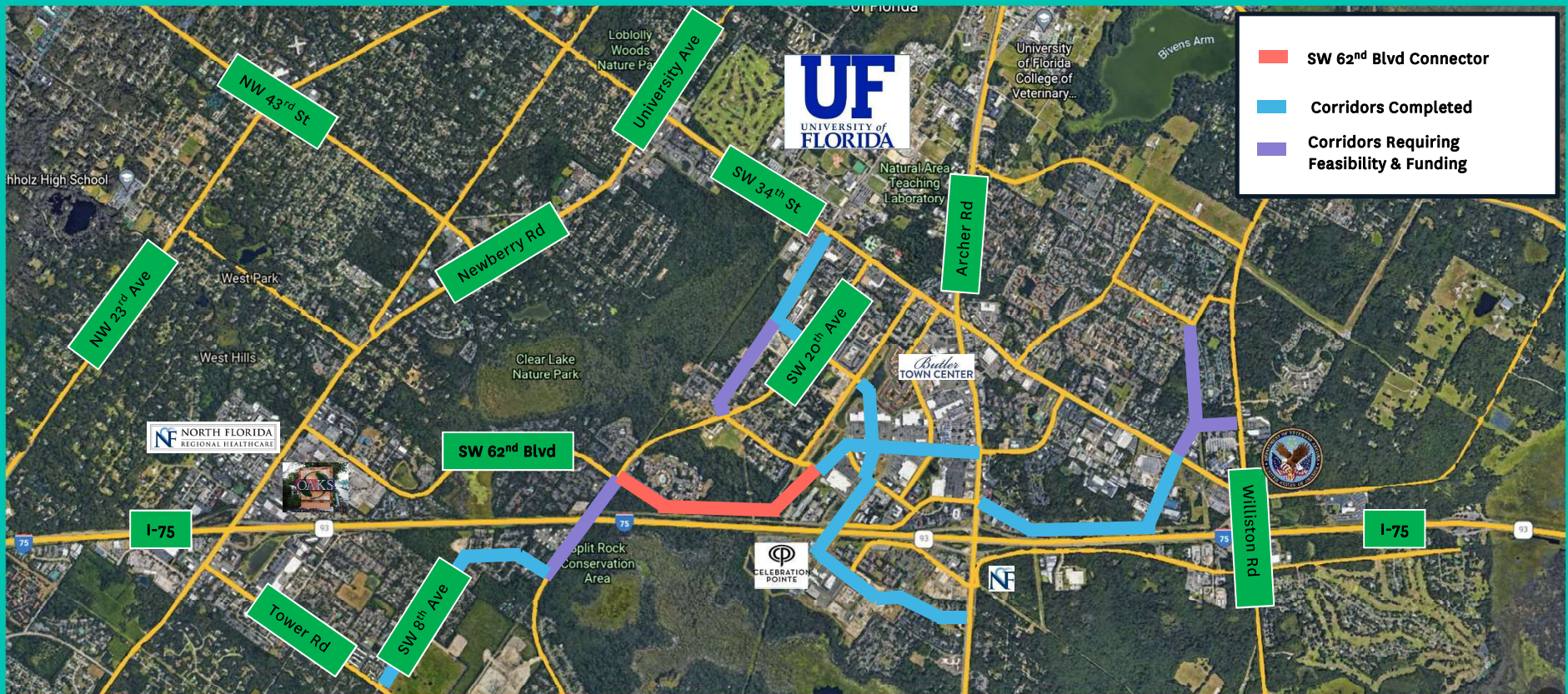
Project Background



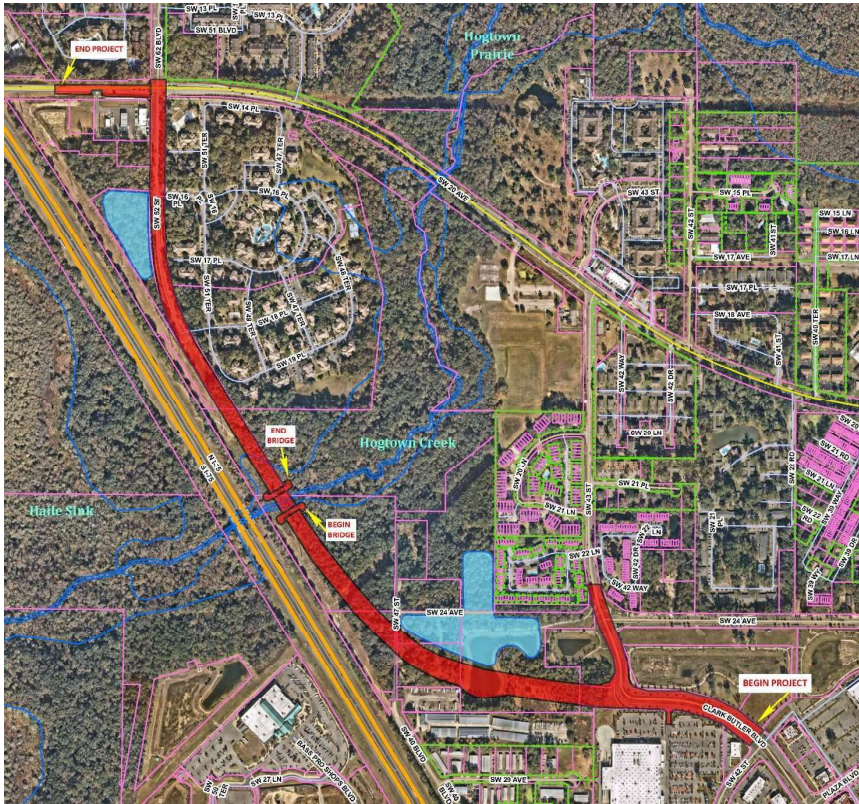
Purpose

- Complete interconnected roadway grid in accordance with City and County Comprehensive Plans
- Reduce congestion on I-75, SW 34th St, SW 20th Ave, Archer Rd and Newberry Rd

Recently Completed & Upcoming Grid Projects



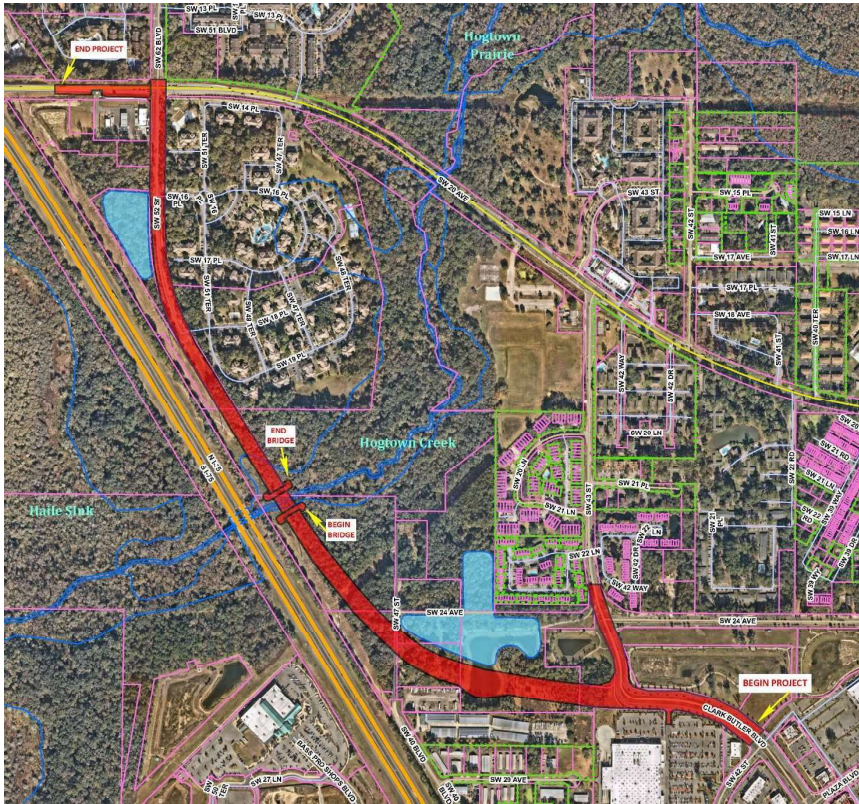
Project Background



History

- Established as a FHWA/FDOT project delivered by County/City through grant agreements
- 2007 to 2014 – County started Project Development & Engineering (PD&E) study and transferred to City for completion– 11 Routes Analyzed

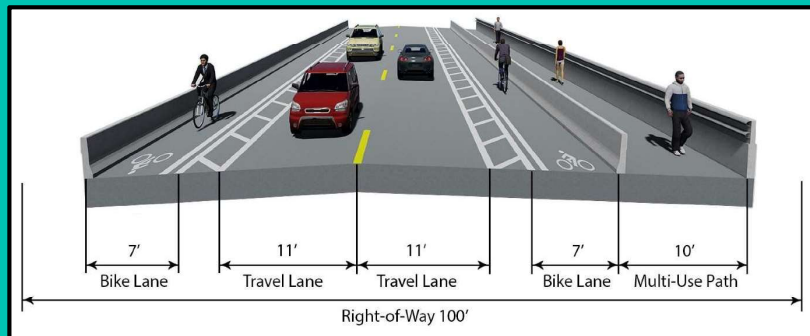
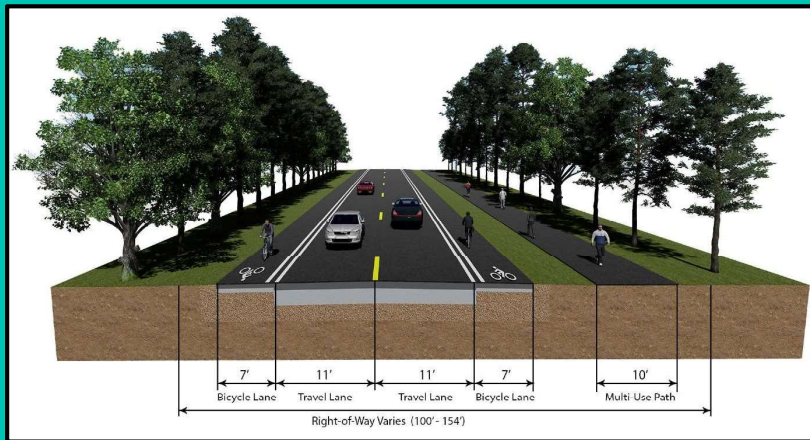
Project Background



History

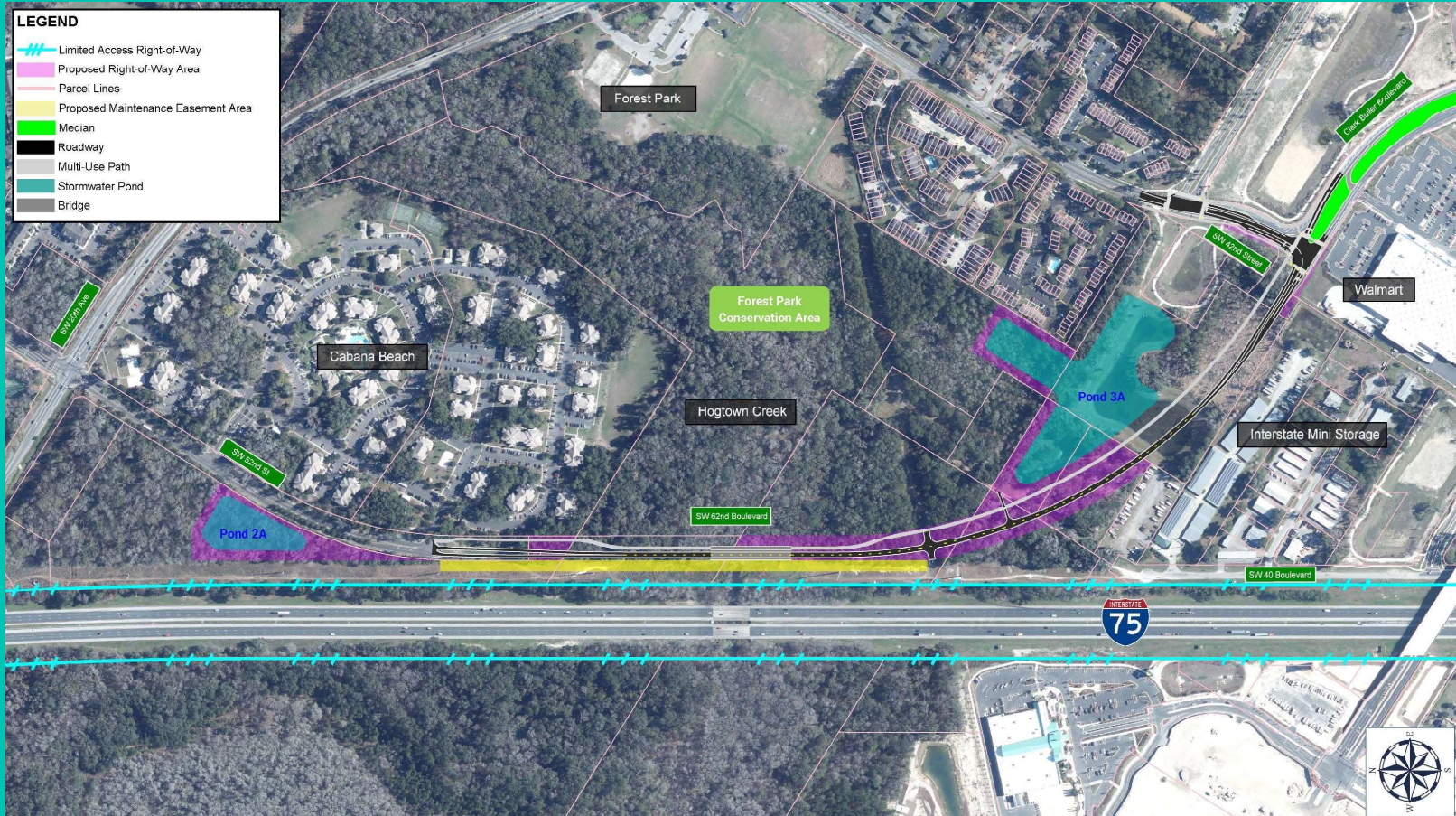
- 2014 to 2016 – Preliminary Engineering Report
- 2016 – 2022 – Federal-Aide & FDOT Approval of alignment, Right-of-way Acquisition, Permitting & Design

Project Scope

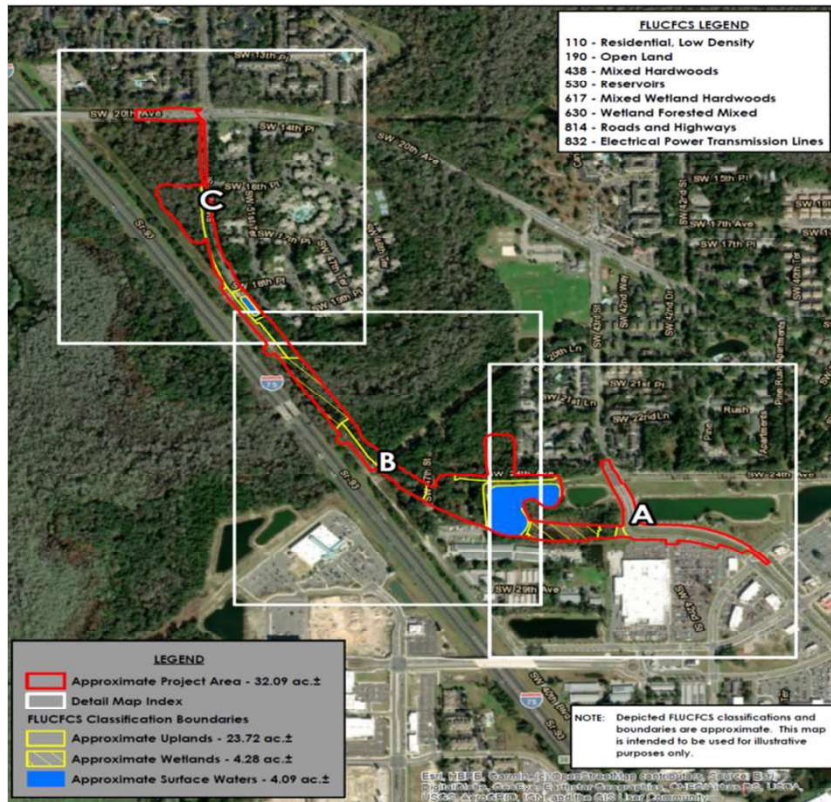


- 1.1 miles in length
- Right-of-way 100 ft to 154 feet wide
- 11 ft travel lanes
- 10 ft shoulders/7 ft bike lanes
- 10 ft multi-use path

Project Scope



Wetland Environmental Resources



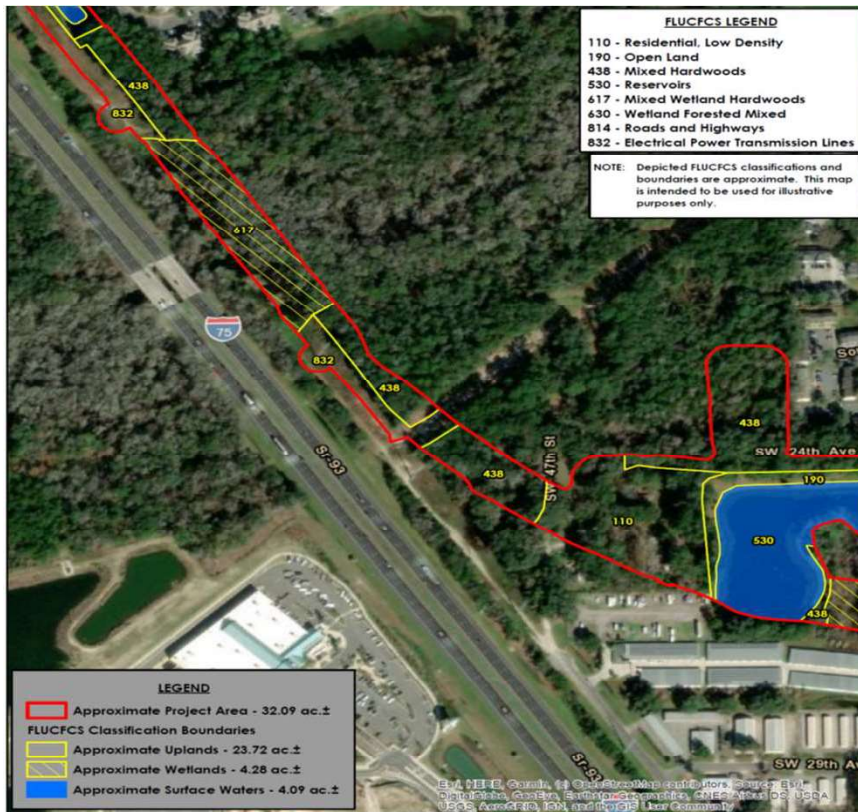
Wetland Impacts

- Regulated by State

Wetland Buffer Impacts

- Regulated by State, County and City; County standards most stringent; State does not recognize local regulations

Wetland Environmental Resources



Wetland/Buffer

Avoidance/Impact Minimization

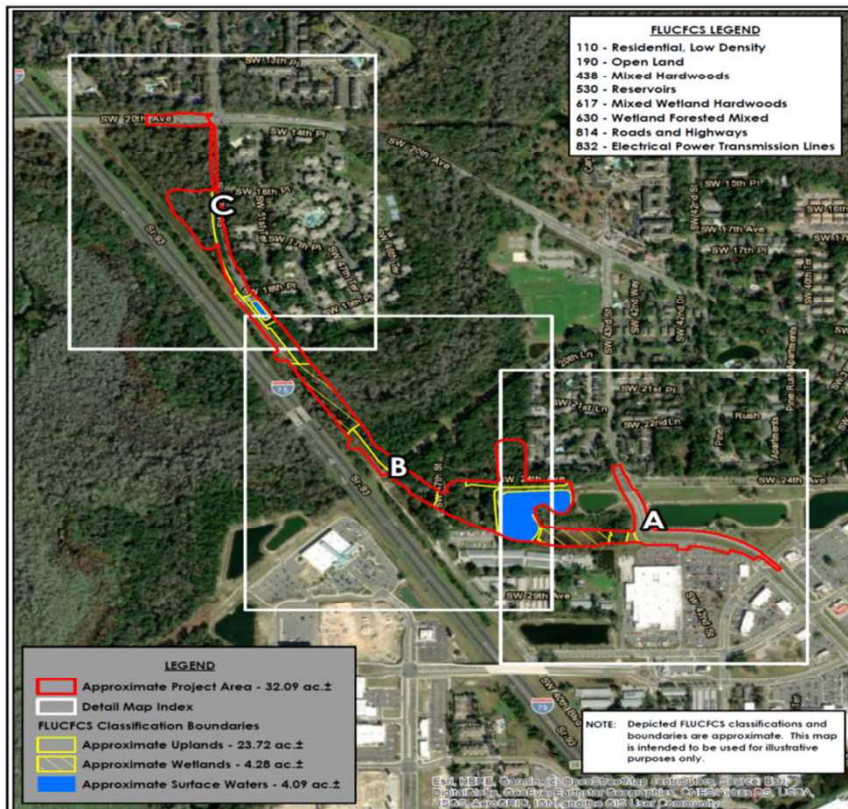
- 11 alternatives evaluated;
selected alignment most appropriate based on cultural & environmental resources, operation, safety and costs.
Avoidance not feasible in all alternatives except no-build

Wetland Environmental Resources



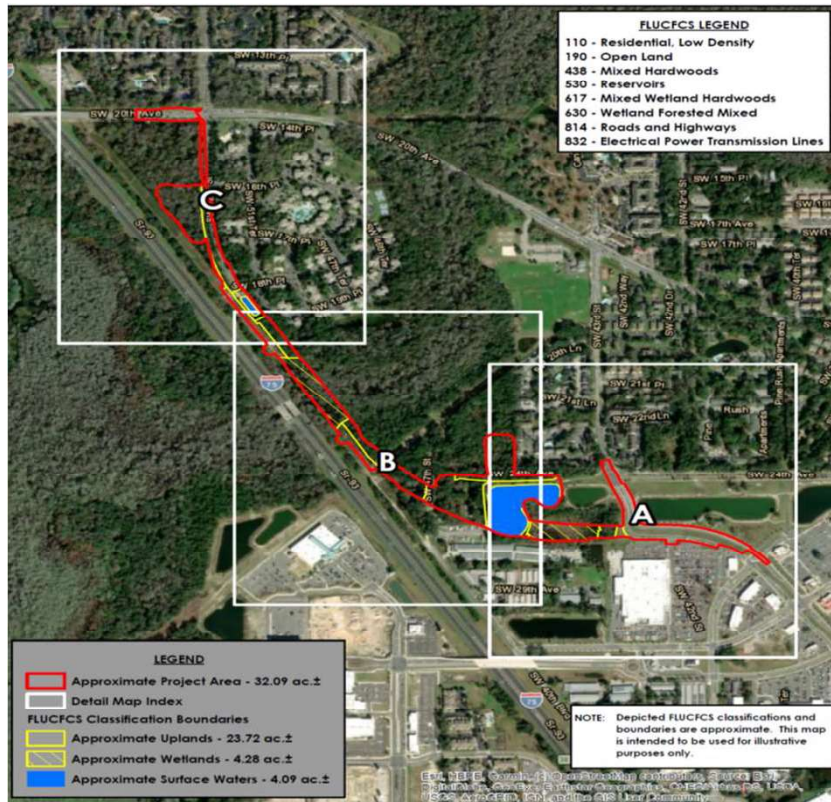
Wetland/Buffer On-Site Mitigation
- Not feasible due to limited property that is undeveloped or not under conservation

Wetland Environmental Resources



- Wetland/Buffer Off-site Mitigation
 - Limited to property in existing inventory due to funding source
 - Reviewed all City owned property for potential wetland construction or restoration

Wetland Environmental Resources

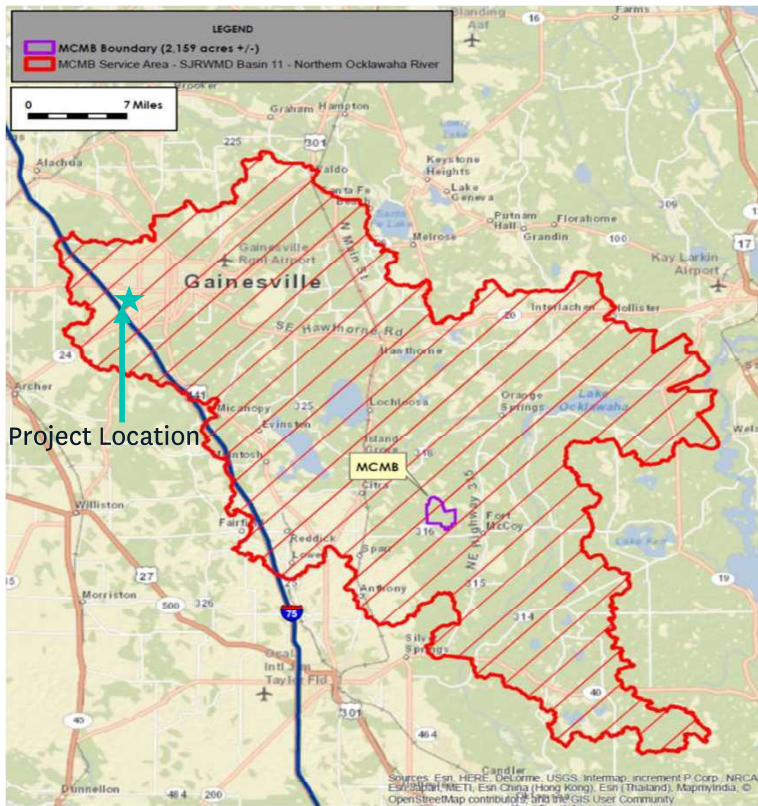


Mitigation Requirements

- Total Primary & Secondary Impacts: 11.2 Acres

- Preliminary Total Wetland Function Loss Rating: 4.5 credits calculated in accordance with FS via the Uniform Mitigation Assessment Method

Wetland Environmental Resources



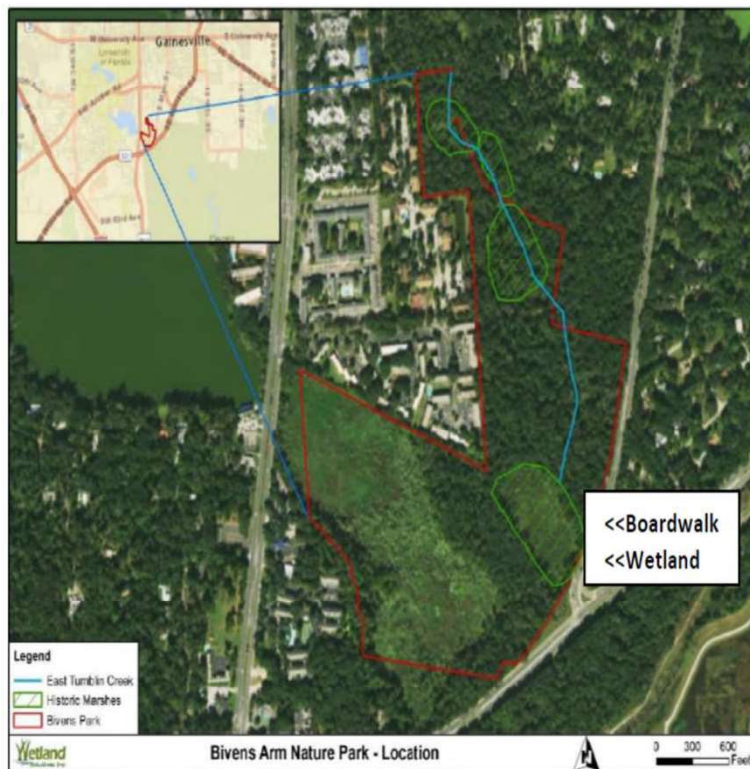
Wetland Mitigation Proposal

- Purchase credits from Mill Creek Mitigation Bank

- Anticipated that 4.5 credits will be required; total TBD by the State

- Most cost effective option; no perpetual costs to the public

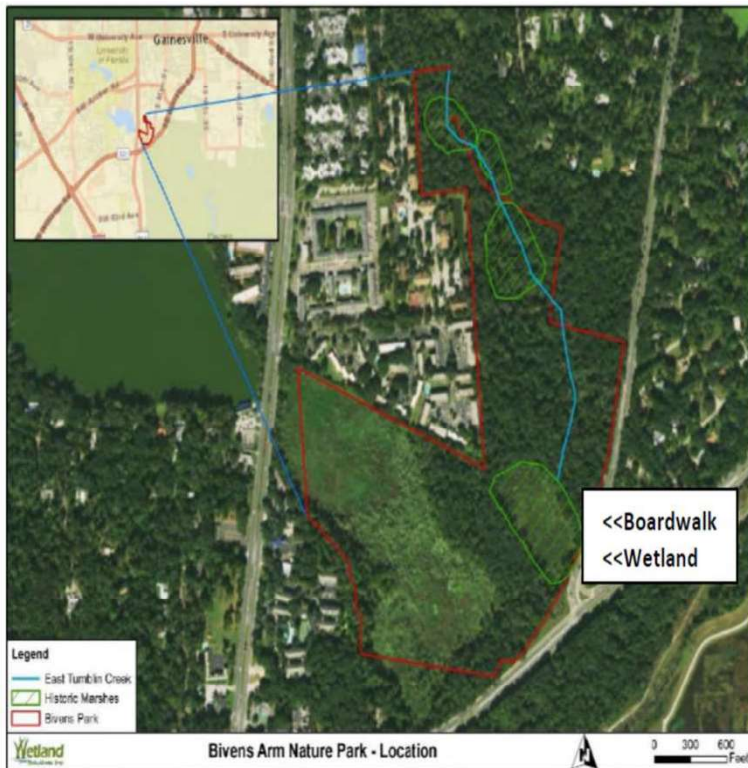
Wetland Environmental Resources



Wetland Buffer Mitigation Proposal

- 5 acres of historical marsh was drained in the 1960s
- Fund the design of Bivens Arm Boardwalk Wetland Marsh Restoration including a phasing plan at \$100K in local funds

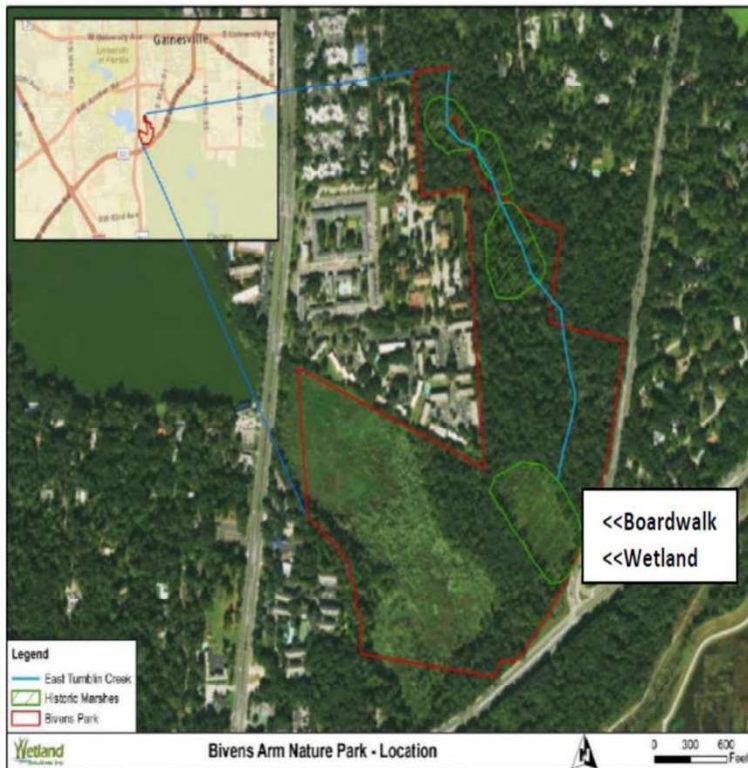
Wetland Environmental Resources



Wetland Buffer Mitigation Proposal

- Construct at least \$200K in local funds currently allocated to Bivens Arm Marsh Restoration which consist of vegetation removal & construction of storm water control structures
- Leverage local funds for grants

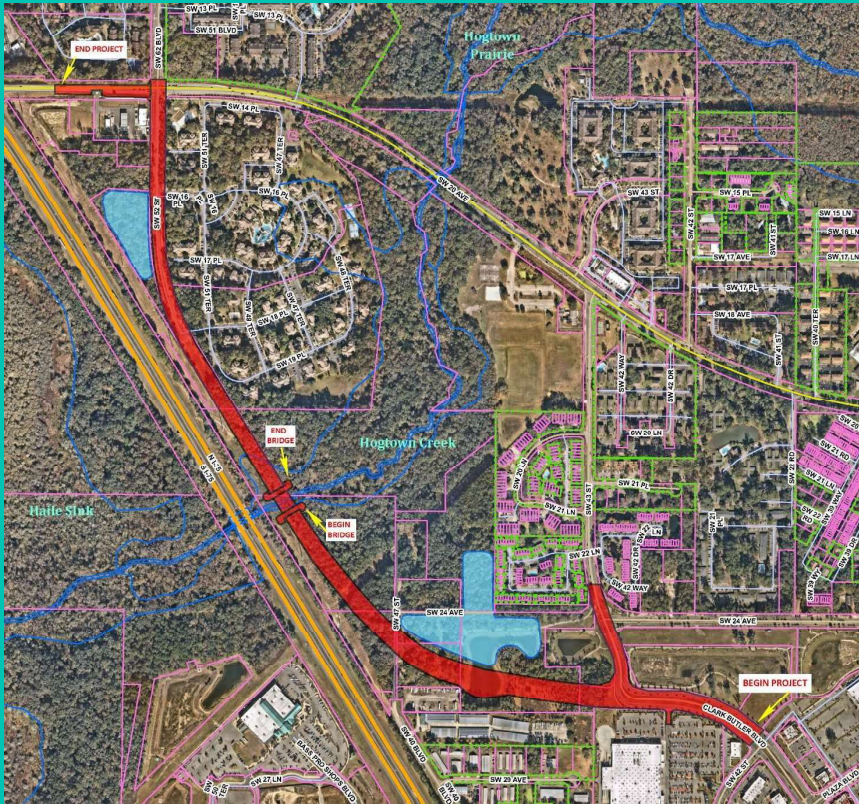
Wetland Environmental Resources



Wetland Buffer Mitigation Proposal

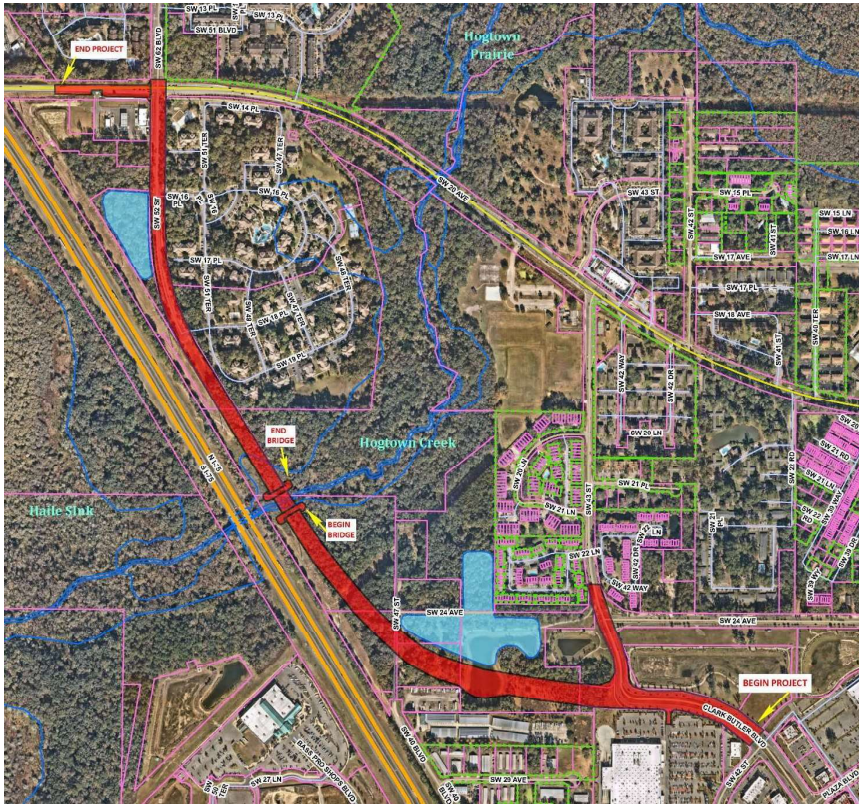
- If Bivens Arm is determined to be not feasible (not anticipated), transfer \$100K to the Environmental Sensitive Lands Fund

Construction Engineering & Inspections RFP



- Funded by FDOT
- Request for Proposal Evaluation Team Rankings:
 1. Kinsinger, Campo & Asso.
 2. EXP US Services
 3. Johnson, Mirmiran & Thompson
 4. Ally Engineering Services

Project Funding

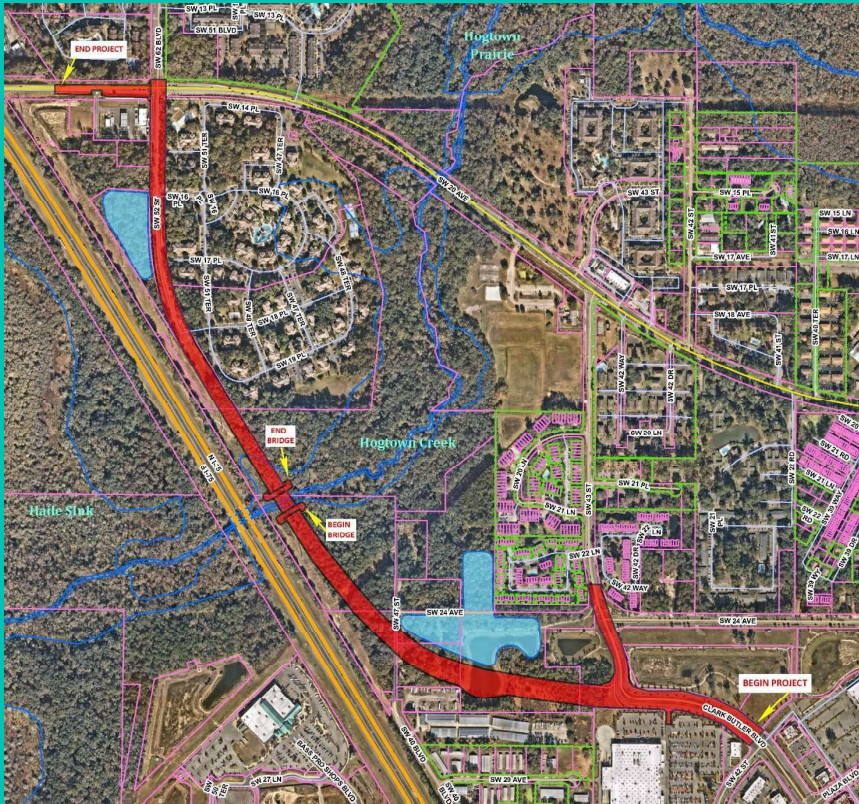


- Prior grant awards to the City and County for the study of the corridor and interim construction projects total approximately \$8.5M
- FDOT Work Program includes \$6.9M for right-of-way acquisition

Project Funding

	Construction & Wetland Mitigation	Wetland Buffer Mitigation
Funding	FDOT Construction \$13,100,000 FDOT CEI ¹ \$2,000,000	Gas Tax \$100,000 PRCA ⁴ \$213,000
Estimated Expenses	Construction \$(11,500,000) Wetlands \$(562,500) ² CEI ¹ \$(1,650,000)	Design \$(100,000) Phase I Construction \$(213,000)
Estimated Balance	\$1,387,500 ³	\$0
Notes	¹ Construction Engineering & Inspections ² 4.5 credits at \$125K per credit; final number of credits required under review by Water Management District ³ Balance to be allocated for market cost unknowns and construction unknowns ⁴ General Capital Projects; leverage for grant funds to expand Phase I scope	

Project Completion Timeline



- November 2021: Complete 100% design plans
- February 2022: FDOT to complete ROW phase
- February 2022: Complete final design and permitting
- Fall 2022 to Fall 2024: Construction Phase

Recommendation

1. Adopt the Resolution which authorizes the City Manager or designee to execute agreements, and any other necessary documents with FDOT pertaining to this project, subject to approval of the City Attorney or designee as to form and legality.
2. Authorize the City Manager or designee to enter into a Memorandum of Understanding with Alachua County for wetland and wetland buffer mitigation for this project, subject to approval of the City Attorney or designee as to form and legality.
3. Authorize the City Manager or designee to enter into a Sales Agreement with Mill Creek Mitigation Bank (JMM Land Ventures, LLC) for the purchase of wetland mitigation credits for this project, subject to the approval of the City Attorney or designee as to form and legality.
4. Accept the evaluation team's selection of the four most qualified firms for RFP #PWDA-22004-MS – SW 62nd Blvd Connector CEI (Federal Funds) in the order of rankings and authorize the City Manager or designee to initiate contract negotiations and execute a contract for professional services subject to approval by the City Attorney or designee as to form and legality.