



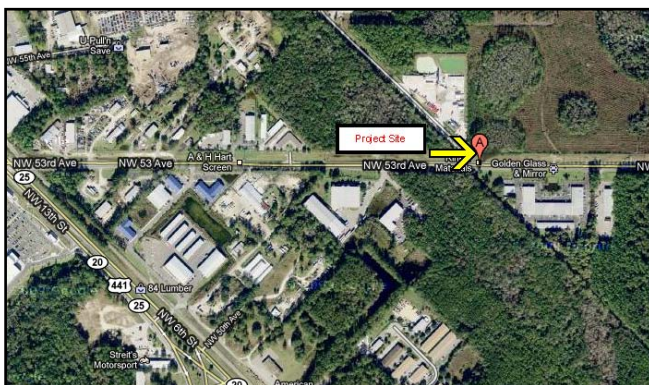
*Focused on Excellence
Delivered with Integrity*

MEMORANDUM

TO: Neighbors of GRACE One Stop Homeless Assistance Center (OSHAC) – Phase 1
FROM: Shawn D. Webber, P.E.
DATE: October 28, 2010
RE: Neighborhood Meeting Public Notice

This Neighborhood Meeting Public Notice announcement is for a vertical capital improvement program and preliminary/final site plan. The project site is located at approximately 820 NW 53rd Avenue.

Date: Wednesday, November 17, 2010
Time: 6:00 pm
Place: City of Gainesville Public Works Center, Building 'D'
 405 NW 39th Ave
 Gainesville, FL 32606
Contact: Shawn D. Webber, P.E.
 (352) 331-1976



The City of Gainesville will hold a workshop to discuss their proposal to construct the GRACE One Stop Homeless Assistance Center (OSHAC) – Phase 1. The existing zoning is Planned Development and the land use designation is Planned Unit Development. The purpose of the workshop is to inform neighboring property owners about the nature of the proposal and to seek comments. We look forward to seeing you there.

A follow-up workshop will be held on Wednesday, December 1, 2010 at 6 p.m. at the City of Gainesville Public Works Center, Building D located at 405 NW 39th Avenue, Gainesville, Florida 32601.

37th ANNUAL FALL
Gainesville Woman's Club

ANTIQUES SHOW & SALE

OCTOBER 29-31, 2010
FRI. & SAT. 10AM-5PM - SUN. 11AM-4PM

GAINESVILLE WOMAN'S CLUB

2809 W. UNIVERSITY AVENUE

Featuring
*CRYSTAL REPAIR SERVICE
*LUNCHES BY THE GAINESVILLE WOMAN'S CLUB

ADMISSION \$5.00 - WITH THIS AD \$4.50

KING ANTIQUE SHOWS, INC.
904-269-2431

PUBLIC NOTICE

A Neighborhood Workshop will be held to discuss a vertical capital improvement program and preliminary/final site plan for a ±10 acre site located at approximately 820 NW 53rd Avenue in Gainesville, Florida. The current Land Use is Planned Unit Development (PUD) and the current zoning is Planned Development (PD). The proposed site plan will allow for construction of the GRACE One Stop Homeless Assistance Center (OSHAC) – Phase 1 to be located within the City of Gainesville. This is not a public hearing. The purpose of this workshop is to inform the public about the nature of the project and seek their comments.

The Neighborhood Workshop will be held Wednesday, November 17, 2010 at 6:00 p.m. at the City of Gainesville Public Works Center, Building 'D' located at 405 NW 39th Ave. Gainesville, Florida 32601. A follow-up workshop will be held on Wednesday, December 1, 2010 at 6 p.m. at the City of Gainesville Public Works Center, Building D located at 405 NW 39th Avenue, Gainesville, Florida 32601.

Contact Person:
Shawn D. Webber, P.E.
Causseaux, Hewett,
& Walpole, Inc.
Phone Number: (352) 331-1976



Historic Haunt offers tours

Each tour takes about 45 minutes and includes stops at 10 different homes.

By Gretchen Gordin
Correspondent

Around Halloween each year, historic figures from the past of Gainesville and Alachua County come "back to life" to tell their stories to trick-or-treaters of all ages.

Tonight, the Matheson Museum will host its annual Historic Halloween Haunt with two Halloween-themed walking tours guided by historical characters throughout the Southeast Historic District of Gainesville.

The first tour will depart at 6 p.m. and is directed mainly toward young children and their parents, and includes stories about the history of the houses, with candy given out at each stop.

The second tour will depart at 7 p.m. and will feature haunting stories about Alachua County's past, geared more toward teenagers and adults.

The public is encouraged to gather at the museum 15 minutes before the start of the tours for light refreshments and to secure their tickets and wristbands required for the tour. The tours begin at the Matheson house, the second-oldest residence in Gainesville, located at 513 E. University Ave.

The Matheson family lived in the house for 130 years until 1996, when Sarah Matheson died and the house was donated to the Matheson Museum.

If y

- Wh
- Wh
- 7 (arr
- How
- and u

- Wh
- Math
- city A

SOME

- 1.M
- 2.3
- 3.A
- 4.M
- 5.L
- 6.1
- 7.S

conver
inns, w
ments
familie

Samu
Mathe
50 peo
year ar
expect
year.

"We t
charac
same s
every y
to be a
last ye

He w
leading
dresse
as, for
donate
"Wan
to keep